

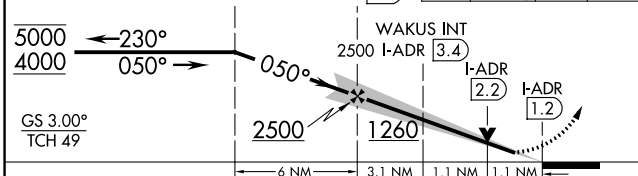
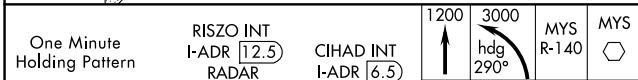
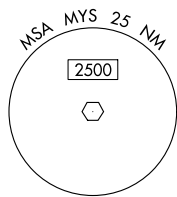
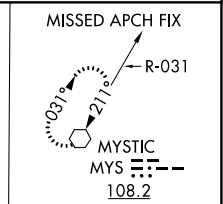
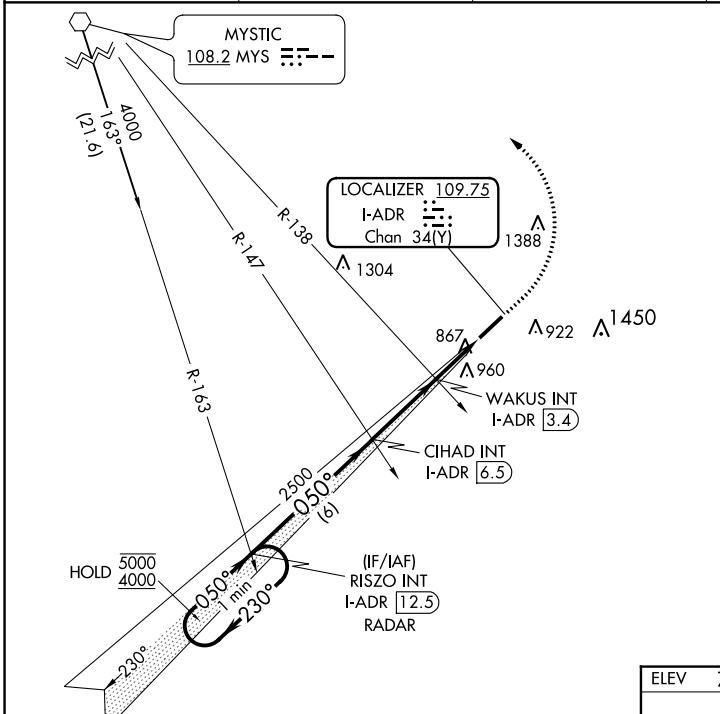
LOC/DME I-ADR 109.75 Chan 34 (Y)	APP CRS 050°	Rwy Idg TDZE Apt Elev 6001 768 776
--	------------------------	--

ILS or LOC RWY 5

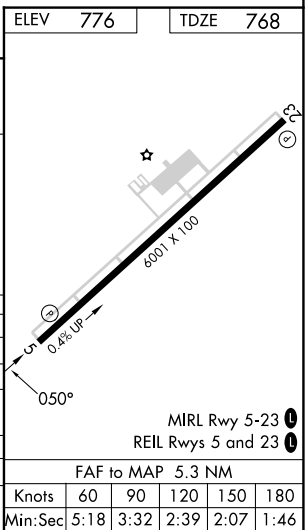
ADDINGTON FLD (EKK)

MISSSED APPROACH: Climb to 1200 then climbing left turn to 3000 on heading 290° and MYS R-140 to MYS VOR and hold.

AWOS-3 121.025	LOUISVILLE APP CON 132.075 327.0	CLNC DEL 119.45	UNICOM 122.8 (CTAF) 0
--------------------------	--	---------------------------	--



CATEGORY	A	B	C	D
S-ILS 5	968-3/4		200 (200-3/4)	
S-LOC 5	1260-1	492 (500-1)	1260-1 3/8	492 (500-1 3/8)
CIRCLING	1260-1	484 (500-1)	1420-1 3/4 644 (700-1 3/4)	1760-3 984 (1000-3)
WAKUS FIX MINIMUMS (DUAL VOR RECEIVERS OR DME REQUIRED)				
S-LOC 5	1140-1 372 (400-1)			
CIRCLING	1240-1 464 (500-1)	1260-1 484 (500-1)	1420-1 3/4 644 (700-1 3/4)	1760-3 984 (1000-3)



FAF to MAP 5.3 NM					
Knots	60	90	120	150	180
Min:Sec	5:18	3:32	2:39	2:07	1:46

SE-1, 22 FEB 2024 to 21 MAR 2024

SE-1, 22 FEB 2024 to 21 MAR 2024

APP CRS 240°	Rwy Idg TDZE Apt Elev	6001 776 776
------------------------	-----------------------------	---

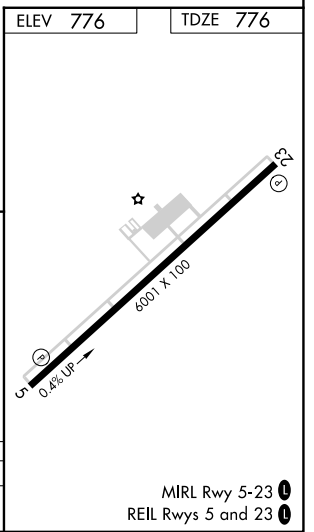
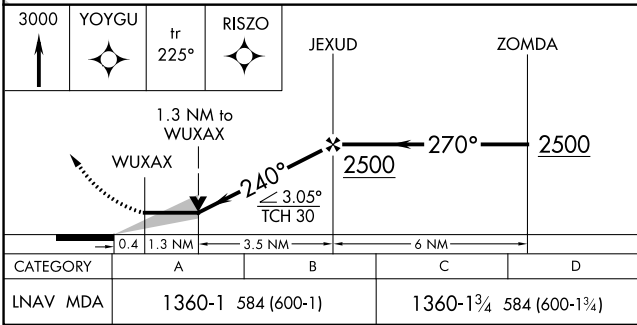
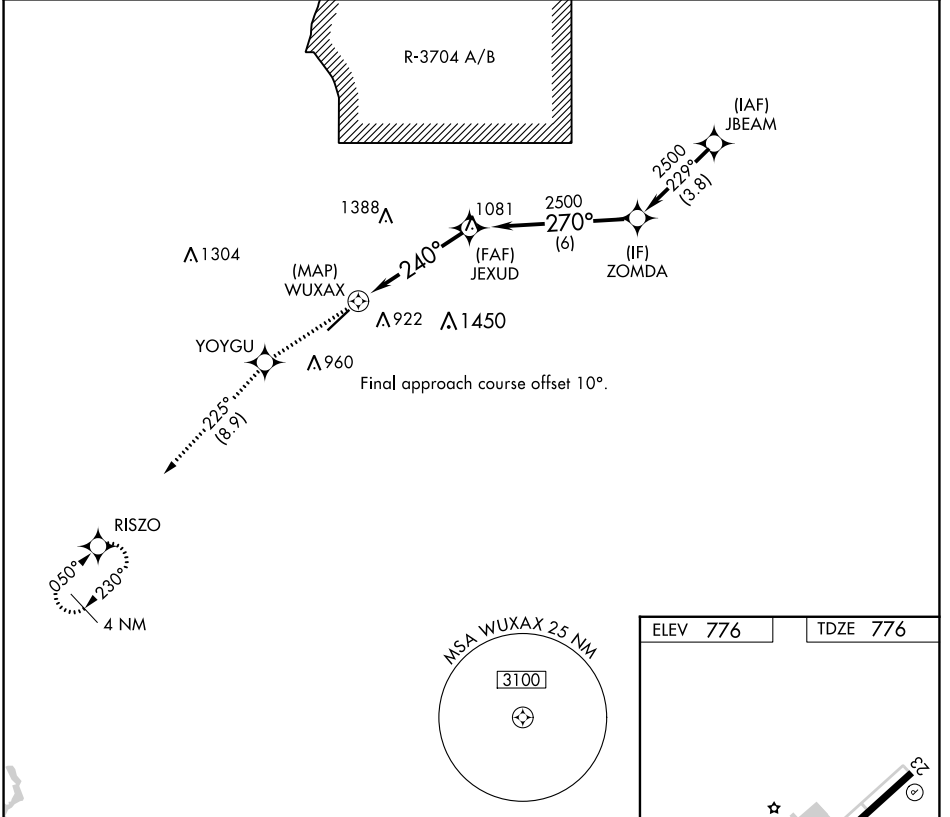
RNAV (GPS) RWY 23

ADDINGTON FLD (EKK)

RNP APCH.	
 	

MISSED APPROACH: Climb to 3000 direct YOYGU and on track 225° to RISZO and hold.

AWOS-3 121.025	LOUISVILLE APP CON 132.075 327.0	CLNC DEL 119.45	UNICOM 122.8 (CTAF)
--------------------------	--	---------------------------	-------------------------------



SE-1, 22 FEB 2024 to 21 MAR 2024

SE-1, 22 FEB 2024 to 21 MAR 2024

WAAS CH 77700 W05A	APP CRS 050°	Rwy Idg TDZE Apt Elev	6001 768 776
--	------------------------	-----------------------------	---

RNAV (GPS) RWY 5

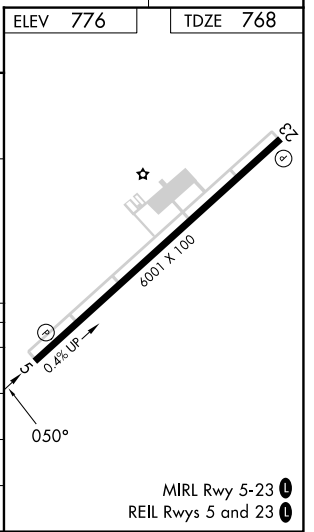
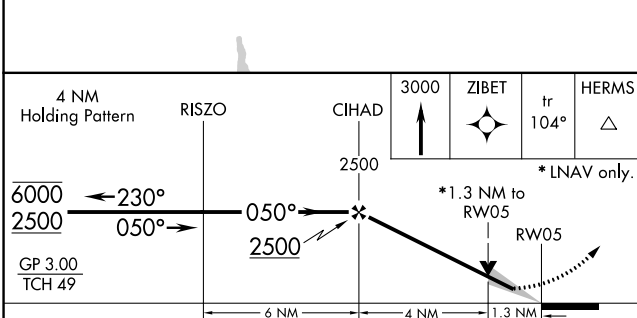
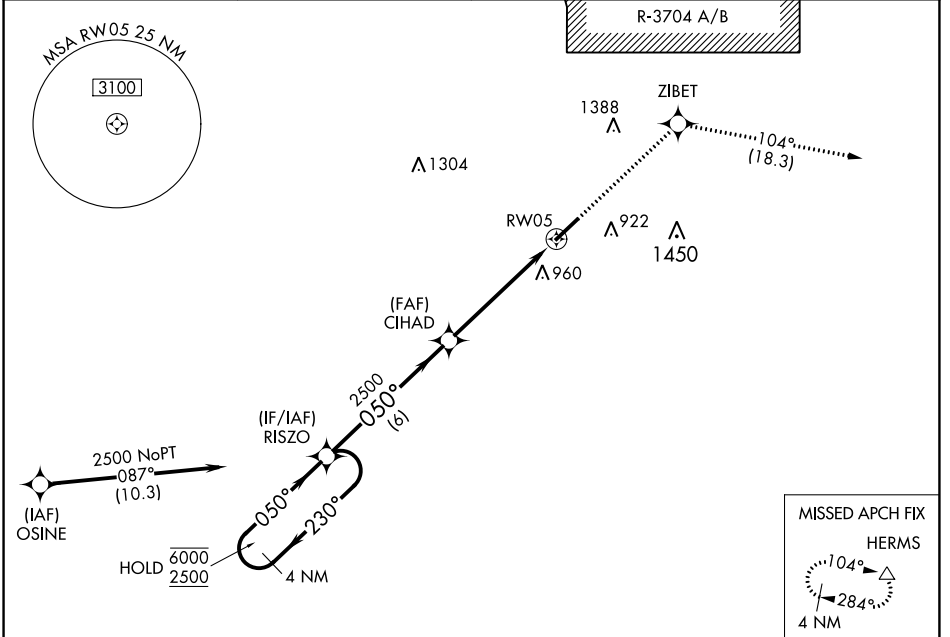
ADDINGTON FLD (EKK)

RNP APCH.

⚠ For uncompensated Baro-VNAV systems, LNAV/VNAV NA below -16°C or above 54°C.

⚠ MISSED APPROACH: Climb to 3000 direct ZIBET and on track 104° to HERMS and hold.

AWOS-3 121.025	LOUISVILLE APP CON 132.075 327.0	CLNC DEL 119.45	UNICOM 122.8 (CTAF) 0
--------------------------	--	---------------------------	--



CATEGORY	A	B	C	D
LPV DA		968-3/4	200 (200-3/4)	
LNAV/VNAV DA		1053-7/8	285 (300-7/8)	
LNAV MDA	1200-1	432 (500-1)	1200-1 1/4	432 (500-1 1/4)
C CIRCLING	1240-1 464 (500-1)	1260-1 484 (500-1)	1420-1 3/4 644 (700-1 3/4)	1760-3 984 (1000-3)

SE-1, 22 FEB 2024 to 21 MAR 2024

SE-1, 22 FEB 2024 to 21 MAR 2024

MIRL Rwy 5-23 **0**
REIL Rws 5 and 23 **0**

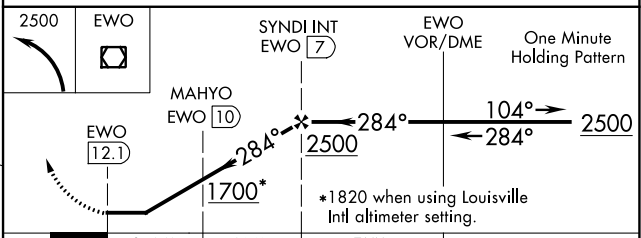
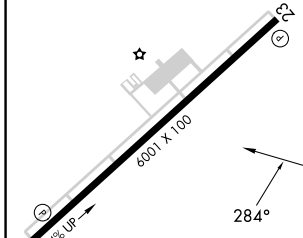
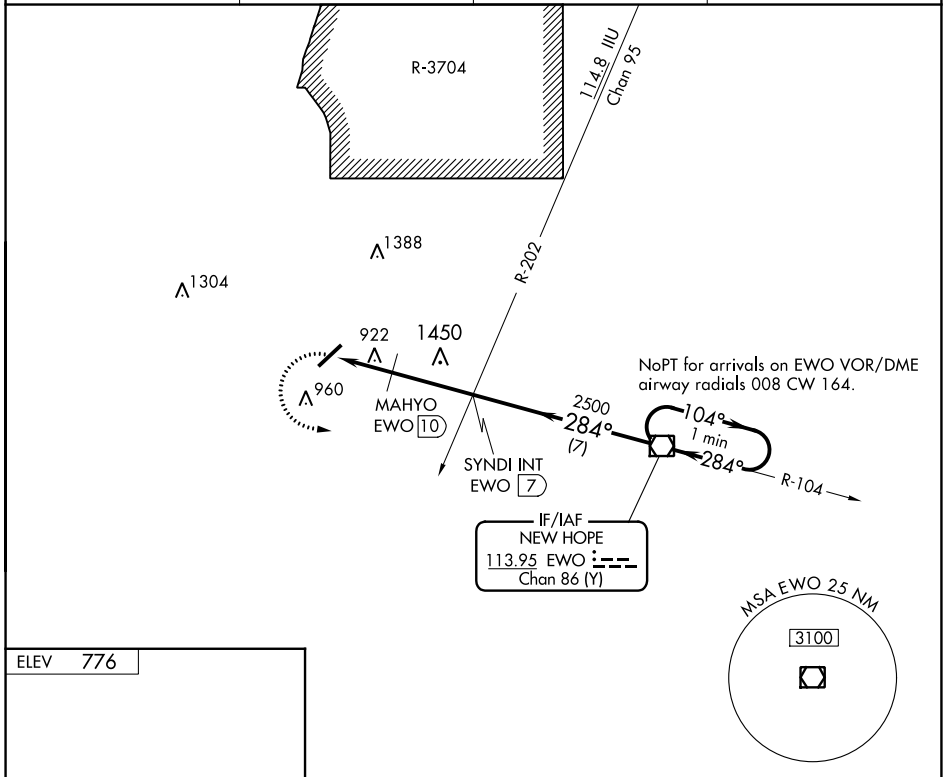
VOR/DME EWO 113.95 Chan 86 (Y)	APP CRS 284°	Rwy Idg TDZE Apt Elev	N/A N/A 776
--	------------------------	-----------------------------	--

VOR-A
ADDINGTON FLD (EKX)

NA When local altimeter setting not received, use Bardstown altimeter setting; increase all MDAs 80 feet and visibility Cat B and Cat C ¼ SM; MAHYO fix minimums: increase visibility Cat C ¼ SM.

MISSED APPROACH: Climbing left turn to 2500 direct to EWO VOR/DME and hold.

AWOS-3 121.025	LOUISVILLE APP CON 132.075 327.0	CLNC DEL 119.45	UNICOM 122.8 (CTAF) 0
--------------------------	--	---------------------------	--



CATEGORY	A	B	C	D
CIRCLING	1700-1¼ 924 (1000-1¼)		1700-2¾ 924 (1000-2¾)	1760-3 984 (1000-3)
MAHYO FIX MINIMUMS				
CIRCLING	1240-1 464 (500-1)	1260-1 484 (500-1)	1420-1¾ 644 (700-1¾)	1760-3 984 (1000-3)

SE-1, 22 FEB 2024 to 21 MAR 2024

SE-1, 22 FEB 2024 to 21 MAR 2024