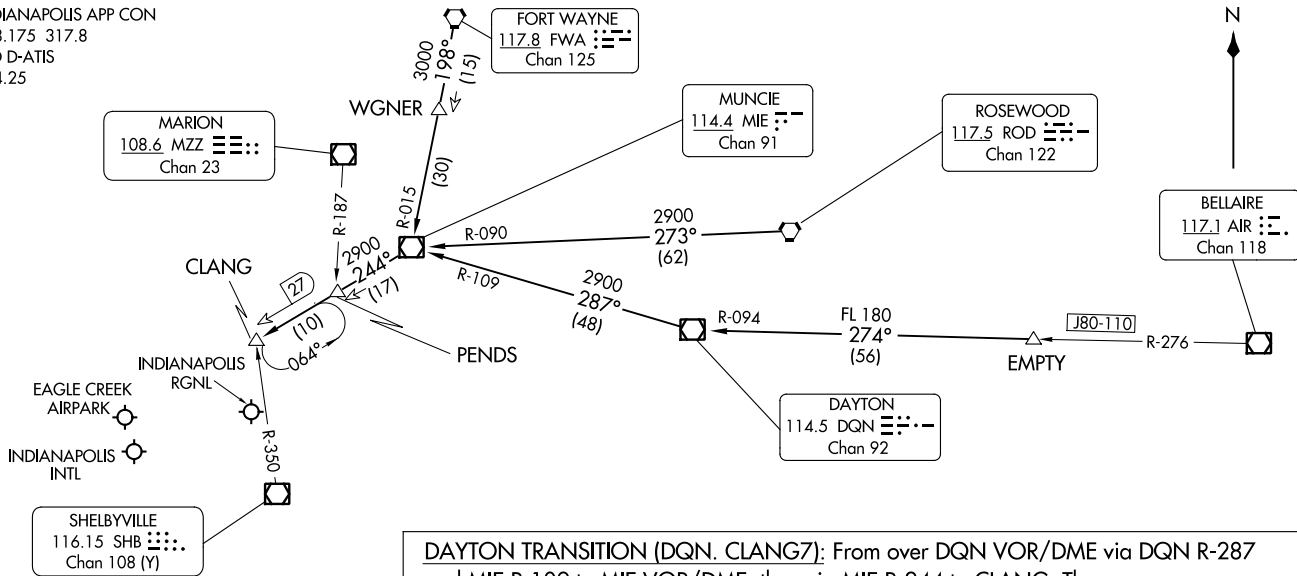


CLANG SEVEN ARRIVAL
(CLANG, CLANG7) 27 APR 17

(CLANG, CLANG7) 23334
CLANG SEVEN ARRIVAL

INDIANAPOLIS APP CON
128.175 317.8
IND D-ATIS
134.25



AI-203 (FAA)

INDIANAPOLIS, INDIANA

DAYTON TRANSITION (DQN, CLANG7): From over DQN VOR/DME via DQN R-287 and MIE R-109 to MIE VOR/DME, then via MIE R-244 to CLANG. Thence....

EMPTY TRANSITION (EMPTY, CLANG7): From over EMPTY via DQN R-094 to DQN VOR/DME, then via DQN R-287 and MIE R-109 to MIE VOR/DME, then via MIE R-244 to CLANG. Thence....

FORT WAYNE TRANSITION (FWA, CLANG7): From over FWA VORTAC via FWA R-198 and MIE R-015 to MIE VOR/DME, then via MIE R-244 to CLANG. Thence....

ROSEWOOD TRANSITION (ROD, CLANG7): From over ROD VORTAC via ROD R-273 and MIE R-090 to MIE VOR/DME, then via MIE R-244 to CLANG. Thence....

....from over CLANG, expect vectors to final approach course.

LOST COMMUNICATIONS:

LANDING IND: In the event of lost communication prior to runway assignment, execute the ILS Runway 23R approach.

NOTE: Radar required.

NOTE: Chart not to scale.

INDIANAPOLIS, INDIANA

RACYR SIX ARRIVAL

INDIANAPOLIS, INDIANA

INDIANAPOLIS APP CON
128.175 317.8
IND D-ATIS
134.25

BRICKYARD
116.3 VHP .
Chan 110

INDIANAPOLIS
EXEC

RADAR required.
DME required.

INDIANAPOLIS
METRO

EAGLE CREEK
AIRPARK

INDIANAPOLIS
RGNL

INDIANAPOLIS
INTL

INDY SOUTH
GREENWOOD

TERRE HAUTE
115.3 TTH .
Chan 100

KELLY

SHELBYVILLE
116.15 SHB .
Chan 108 (Y)

BIBLE GROVE
109.0 BIB .
Chan 27

DRWUD

6000
*2200
078°
(15)
REEMO

43
084°
(30)
45

RACYR

HOOSIER
110.2 OOM .
Chan 39

6000
*2100
027°
(66)
65
66

POCKET CITY
113.3 PXV .
Chan 80

NOTE: Chart not to scale.

ARRIVAL ROUTE DESCRIPTION

BIBLE GROVE TRANSITION (BIB.RACYR6): From over BIB VORTAC on BIB R-078 and OOM R-264 to RACYR. Thence....

POCKET CITY TRANSITION (PXV.RACYR6): From over PXV VORTAC on PXV R-027 and VHP R-209 to RACYR. Thence....

....from over RACYR on VHP VORTAC R-209 to DRWUD, then on VHP VORTAC R-209 to KELLY, then on VHP VORTAC R-209 to VHP VORTAC. Expect radar vectors to final approach course.

LOST COMMUNICATIONS: Landing IND: In the event of lost communication prior to runway assignment, execute the ILS Runway 23R approach.

RACYR SIX ARRIVAL

INDIANAPOLIS, INDIANA