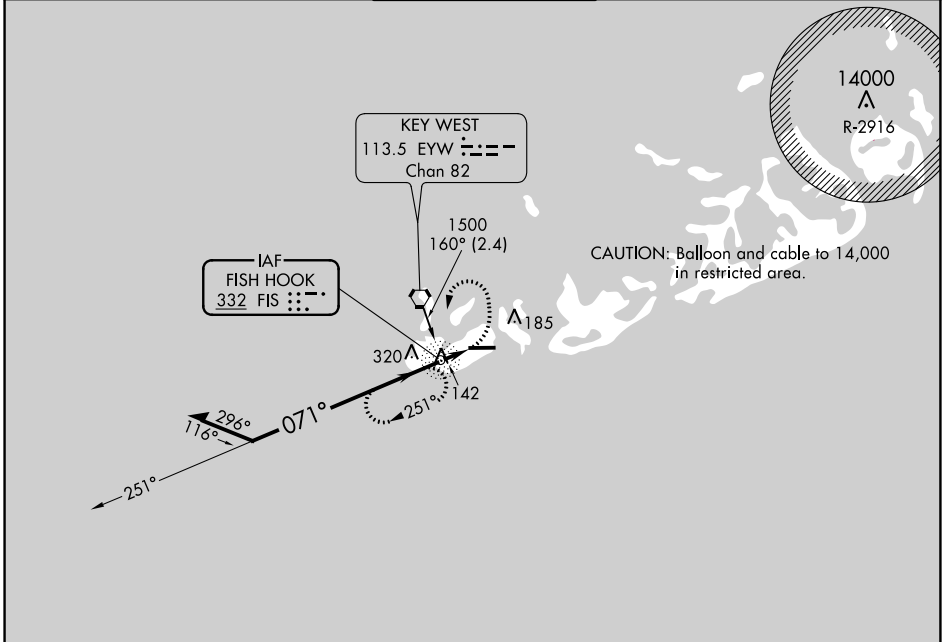


NDB FIS <b>332</b>	APP CRS <b>071°</b>	Rwy ldg TDZE Apt Elev	<b>N/A</b> <b>N/A</b> <b>3</b>
-----------------------	------------------------	--------------------------	--------------------------------------

**NDB-A**  
KEY WEST INTL (EYW)

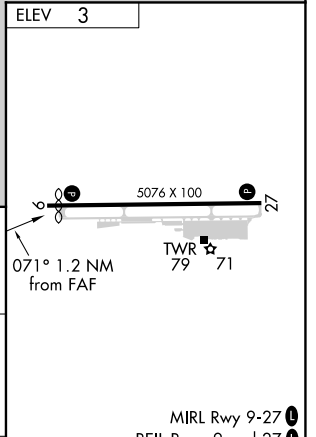
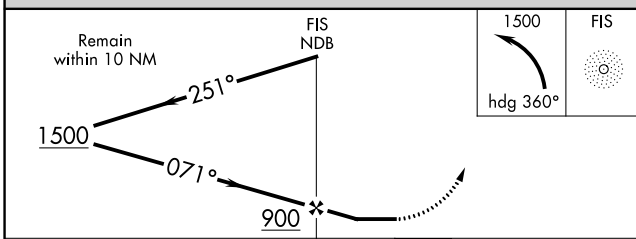
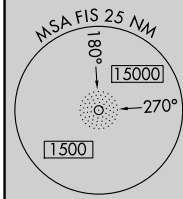
<b>ASR</b>	MISSED APPROACH: Climbing left turn to 1500 via heading 360°, then left turn direct FIS NDB and hold.				
------------	---	--	--	--	--

ATIS <b>119.675</b>	NAVY KEY WEST APP CON * <b>124.025 313.7</b>	KEY WEST TOWER * <b>118.2 (CTAF) 0 257.8</b>	GND CON <b>121.9</b>	CLNC DEL <b>121.9</b>	UNICOM <b>122.95</b>
------------------------	---	---	-------------------------	--------------------------	-------------------------



SE-3, 07 OCT 2021 to 04 NOV 2021

SE-3, 07 OCT 2021 to 04 NOV 2021



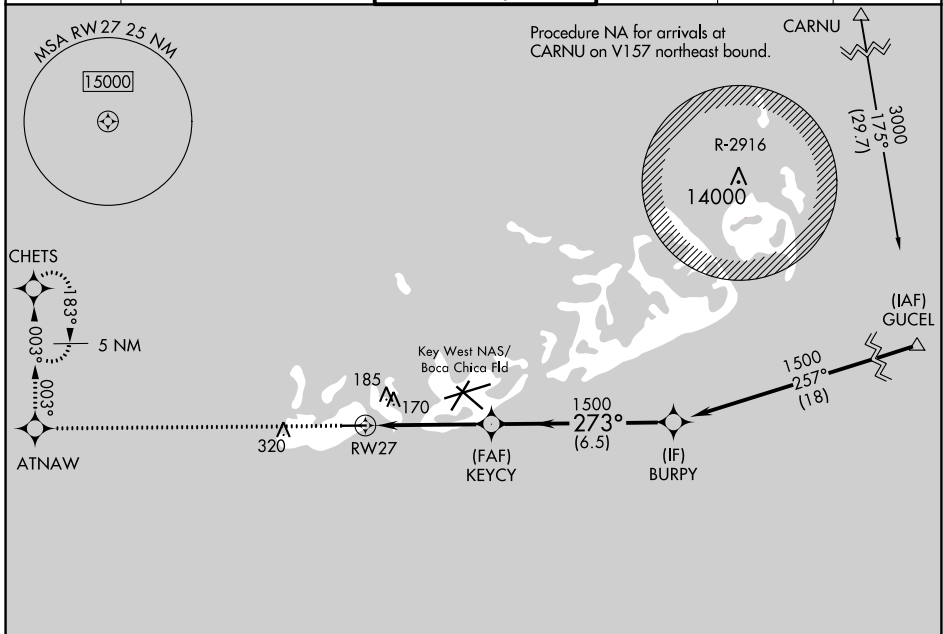
CATEGORY	A	B	C	D	FAF to MAP 1.2 NM					
CIRCLING	500-1	497 (500-1)	620-1¾ 617 (700-1¾)	620-2 617 (700-2)	Knots	60	90	120	150	180
					Min:Sec	1:12	0:48	0:36	0:29	0:24

WAAS CH <b>82100</b> <b>W27A</b>	APP CRS <b>273°</b>	Rwy Idg TDZE Apt Elev	<b>4801</b> <b>3</b> <b>3</b>
--	------------------------	-----------------------------	-------------------------------------

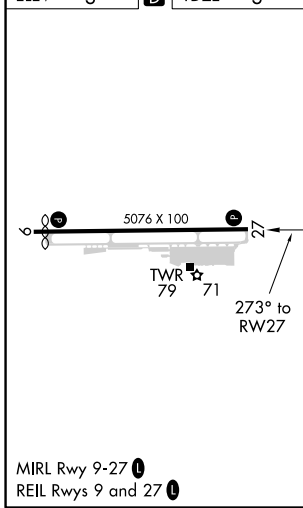
# RNAV (GPS) RWY 27

KEY WEST INTL (EYW)

RNP APCH-GPS.		<p><b>▼</b> When local altimeter setting not received, use Key West NAS/Boca Chica Fld altimeter setting. Rwy 27 helicopter visibility reduction below <math>\frac{3}{4}</math> SM NA.</p> <p><b>▲</b> ASR</p>			<p>MISSED APPROACH: Climb to 2400 direct ATNAW and via 003° track to CHETS and hold.</p>	
ATIS <b>119.675</b>	NAVY KEY WEST APP CON * <b>124.025 313.7</b>	KEY WEST TOWER * <b>118.2(CTAF) 0 257.8</b>	GND CON <b>121.9</b>	CLNC DEL <b>121.9</b>	UNICOM <b>122.95</b>	



ELEV 3	<b>D</b>	TDZE 3
--------	----------	--------



2400	ATNAW	CHETS	VGSi and RNAV glidepath not coincident (VGSi Angle 3.00/TCH 34). KEYCY BURPY	
↑	003° tr	003° tr	273°	1500
RW27		1500		GP 3.00° TCH 45
4.5 NM		6.5 NM		Procedure Turn NA
CATEGORY	A	B	C	D
LPV DA	253-1		250 (300-1)	
LNAV MDA	460-1	457 (500-1)	460-1 $\frac{3}{8}$	457 (500-1 $\frac{3}{8}$ )
CIRCLING	500-1	497 (500-1)	620-1 $\frac{3}{4}$ 617 (700-1 $\frac{3}{4}$ )	620-2 617 (700-2)

SE-3, 07 OCT 2021 to 04 NOV 2021

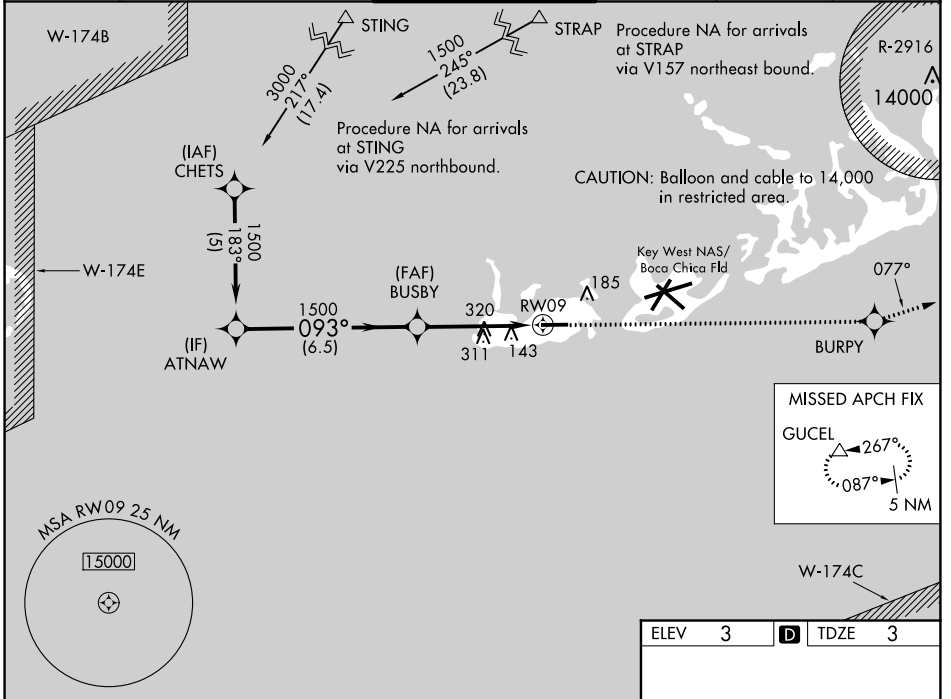
SE-3, 07 OCT 2021 to 04 NOV 2021

WAAS CH <b>40405</b> <b>W09A</b>	APP CRS <b>093°</b>	Rwy Idg <b>4801</b> TDZE <b>3</b> Apt Elev <b>3</b>
--	------------------------	---

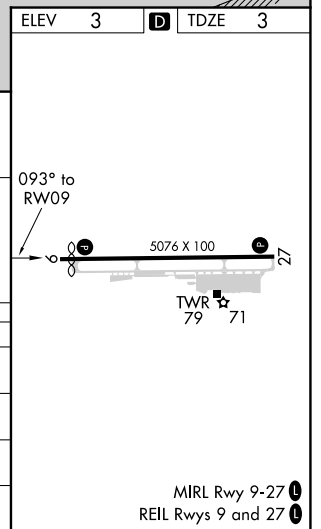
# RNAV (GPS) RWY 9

KEY WEST INTL (EYW)

RNP APCH-GPS.		<p><b>⚠</b> For uncompensated Baro-VNAV systems, LNAV/VNAV NA below -15°C or above 48°C. Rwy 9 helicopter visibility reduction below ¾ SM NA. If local altimeter setting not received, use Key West NAS/Boca Chica Fld altimeter setting.</p>			<p>MISSED APPROACH: Climb to 3000 direct BURPY and via 077° track to GUCEL and hold.</p>	
ATIS <b>119.675</b>	NAVY KEY WEST APP CON * <b>124.025 313.7</b>	KEY WEST TOWER * <b>118.2 (CTAF) 257.8</b>	GND CON <b>121.9</b>	CLNC DEL <b>121.9</b>	UNICOM <b>122.95</b>	



Procedure Turn NA	ATNAW	BUSBY	3000	BURPY	077° tr	GUCEL
GP 3.00° TCH 35	1500	1500				
CATEGORY	A	B	C	D		
LPV DA	253-1		250 (300-1)			
LNAV/VNAV DA	425-1½		422 (500-1½)			
LNAV MDA	580-1	577 (600-1)	580-1½ 577 (600-1½)	580-1¾ 577 (600-1¾)		
CIRCLING	580-1	577 (600-1)	620-1¾ 617 (700-1¾)	620-2 617 (700-2)		



SE-3, 07 OCT 2021 to 04 NOV 2021

SE-3, 07 OCT 2021 to 04 NOV 2021