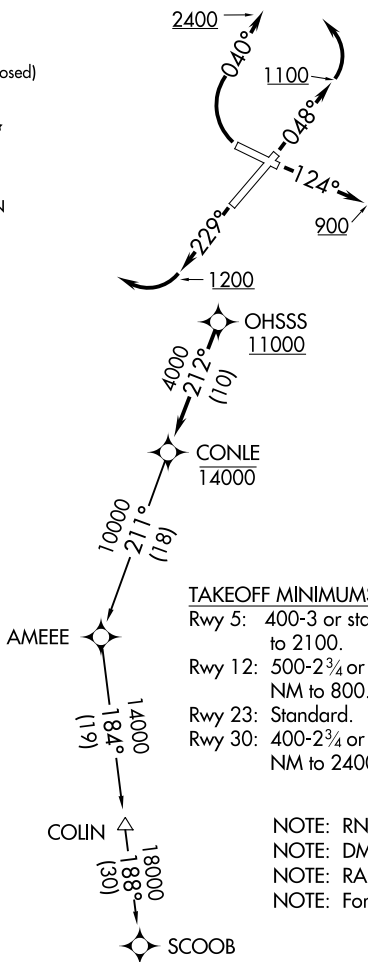


CONLE FOUR DEPARTURE (RNAV)

ATIS
 124.875
 CLNC DEL
 121.975
 126.9 (when tower closed)
 GND CON
 121.975
 FREDERICK TOWER *
 132.4 (CTAF)
 UNICOM
 122.95
 POTOMAC DEP CON
 126.1 338.25

**TOP ALTITUDE:
ASSIGNED BY ATC**



TAKEOFF MINIMUMS:

- Rwy 5: 400-3 or standard with minimum climb of 260' per NM to 2100.
- Rwy 12: 500-2¾ or standard with minimum climb of 410' per NM to 800.
- Rwy 23: Standard.
- Rwy 30: 400-2¾ or standard with minimum climb of 340' per NM to 2400.

- NOTE: RNAV 1.
- NOTE: DME/DME/IRU or GPS required.
- NOTE: RADAR required.
- NOTE: For turbojet aircraft only.

NOTE: Chart not to scale.



DEPARTURE ROUTE DESCRIPTION

- TAKEOFF RWY 5: Climb heading 040° to 1100 before turning left.
- TAKEOFF RWY 12: Climb heading 124° to 900 before proceeding westbound.
- TAKEOFF RWY 23: Climb heading 229° to 1200 before turning right.
- TAKEOFF RWY 30: Climbing right turn heading 040° to 2400 before proceeding on course.

Climb on assigned heading to ATC assigned altitude, for vectors to cross OHSSS at or above 11000, then on track 212° to cross CONLE at or below 14000, then on assigned transition. Expect filed altitude within 10 minutes after departure.

COLIN TRANSITION (CONLE4.COLIN)

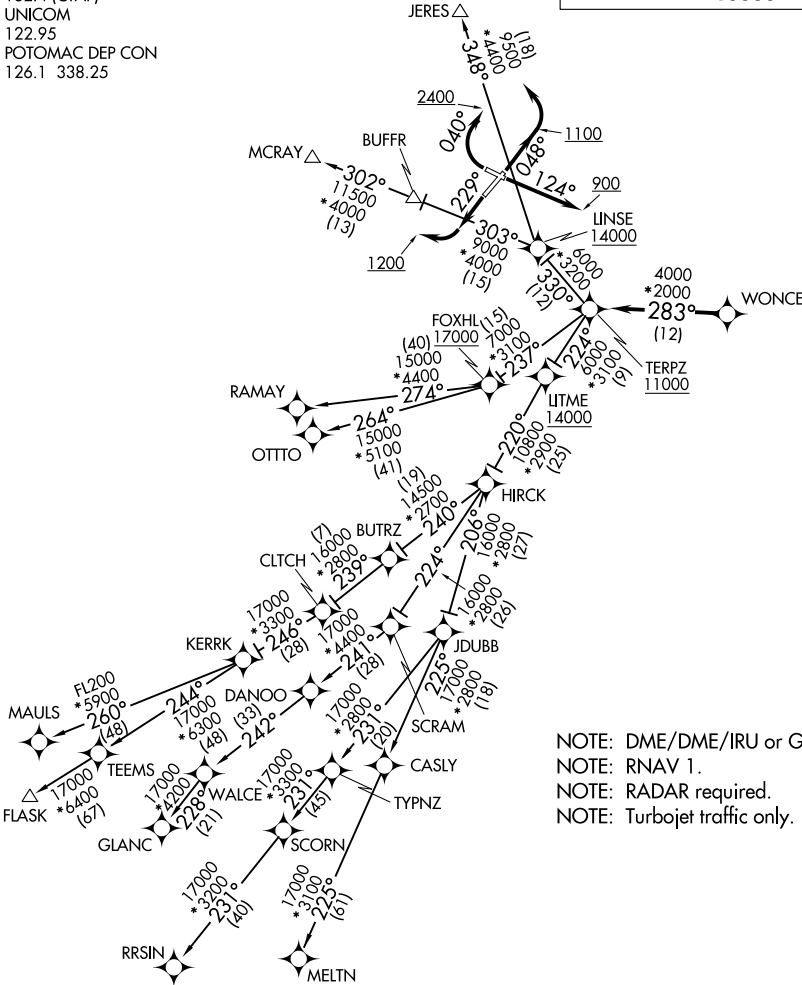
SCOOB TRANSITION (CONLE4.SCOOB)

TERPZ SEVEN DEPARTURE (RNAV)

FREDERICK, MARYLAND

TOP ALTITUDE:
RAMAY, OTTTO, MAULS, FLASK,
RRSIN, GLANC, MELTN
TRANSITIONS: 1700N
JERES, MCRAY TRANSITIONS:
1600N

ATIS
 124.875
 CLNC DEL
 121.975
 GND CON
 121.975
 121.975
 FREDERICK TOWER*
 132.4 (CTAF)
 UNICOM
 122.95
 POTOMAC DEP CON
 126.1 338.25



NOTE: DME/DME/IRU or GPS required.
 NOTE: RNAV 1.
 NOTE: RADAR required.
 NOTE: Turbojet traffic only.

TAKEOFF MINIMUMS:
 Rwy 23: Standard.
 Rwy 5: Standard with minimum climb of 260' per NM to 1100.
 Rwy 12: 500-2¾ or Standard with minimum climb of 395' per NM to 1000.
 Rwy 30: Standard with minimum climb of 285' per NM to 900.

NOTE: Chart not to scale.

NE-3, 22 FEB 2024 to 21 MAR 2024

NE-3, 22 FEB 2024 to 21 MAR 2024

TERPZ SEVEN DEPARTURE (RNAV)

(TERPZ7.TERPZ) 26MAR20

FREDERICK, MARYLAND
FREDERICK MUNI (F'DK)

TERPZ SEVEN DEPARTURE (RNAV)



DEPARTURE ROUTE DESCRIPTION

TAKEOFF RWY 5: Climb on heading 048° to 1100 before turning left.

TAKEOFF RWY 12: Climb on heading 124° to 900 before proceeding westbound.

TAKEOFF RWY 23: Climb on heading 229° to 1200 before turning right.

TAKEOFF RWY 30: Climbing right turn heading 040° to 2400 before proceeding on course.

Fly heading and maintain altitude assigned by ATC, expect RADAR vectors to WONCE, then on track 283° to cross TERPZ at or above 11000, thence. . . .

. . . on assigned transition: Departures on JERES and MCRA Y transitions maintain 16000.

Departures on RAMAY, OTTTO, MAULS, FLASK, MELTN, RRSIN, GLANC transitions maintain 17000, expect further clearance to filed altitude within 10 minutes after departure.

FLASK TRANSITION (TERPZ7.FLASK)

GLANC TRANSITION (TERPZ7.GLANC)

JERES TRANSITION (TERPZ7.JERES)

MAULS TRANSITION (TERPZ7.MAULS)

MCRA Y TRANSITION (TERPZ7.MCRA Y)

MELTN TRANSITION (TERPZ7.MELTN)

OTTTO TRANSITION (TERPZ7.OTTTO)

RAMAY TRANSITION (TERPZ7.RAMAY)

RRSIN TRANSITION (TERPZ7.RRSIN)

NE-3, 22 FEB 2024 to 21 MAR 2024

NE-3, 22 FEB 2024 to 21 MAR 2024