

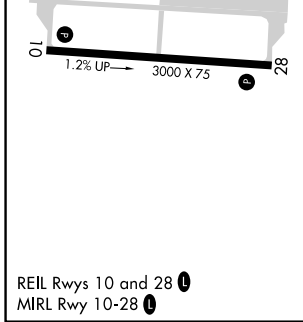
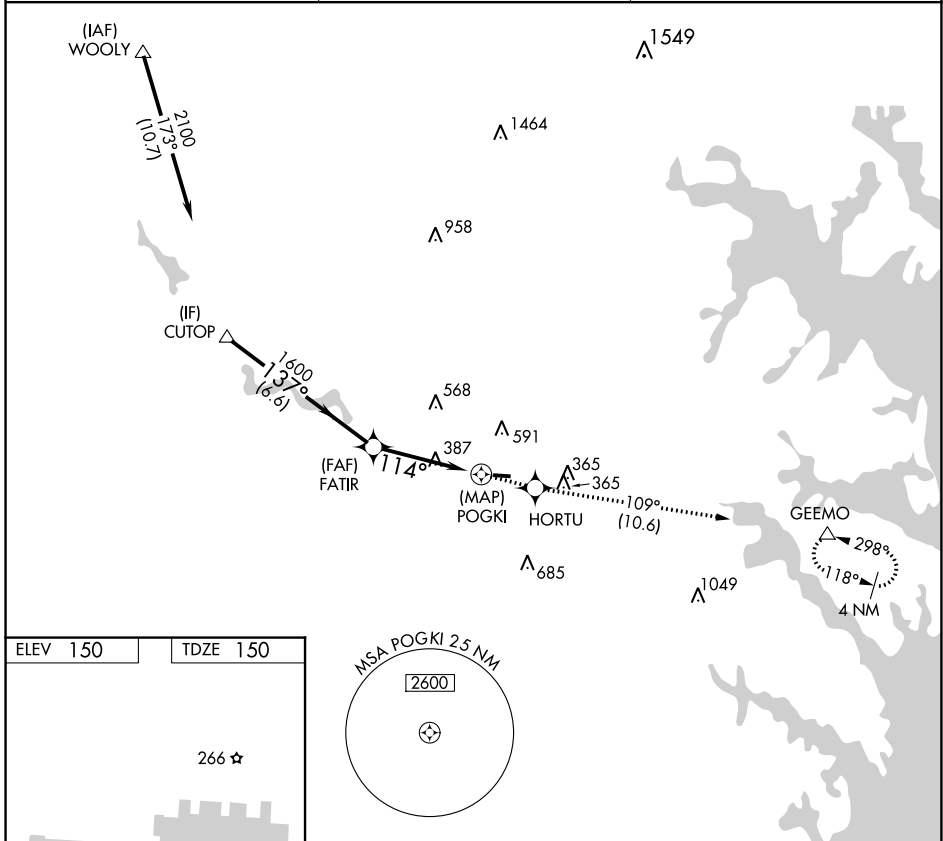
APP CRS	Rwy Idg	3000
114°	TDZE	150
	Apt Elev	150

RNAV (GPS) RWY 10

TIPTON (FME)

RNP APCH.	MISSED APPROACH: Climb to 2200 direct HORTU and on track 109° to GEEMO and hold.
Procedure NA at night. Rwy 10 helicopter visibility reduction below 1 SM NA.	

AWOS-3 123.925	POTOMAC APP CON 119.7 290.475	UNICOM 123.05 (CTAF) 0
--------------------------	---	----------------------------------



CUTOP	Visual Segment - Obstacles.	2200	HORTU	tr 109°	GEEMO
2100	137°	FATIR	1600	114°	POGKI
6.6 NM		4 NM		0.5 NM	
CATEGORY	A	B	C	D	
LNNAV MDA	780-1	630 (700-1)	NA		
CIRCLING	820-1 670 (700-1)	960-1 810 (900-1)	NA		

NE-3, 22 FEB 2024 to 21 MAR 2024

NE-3, 22 FEB 2024 to 21 MAR 2024

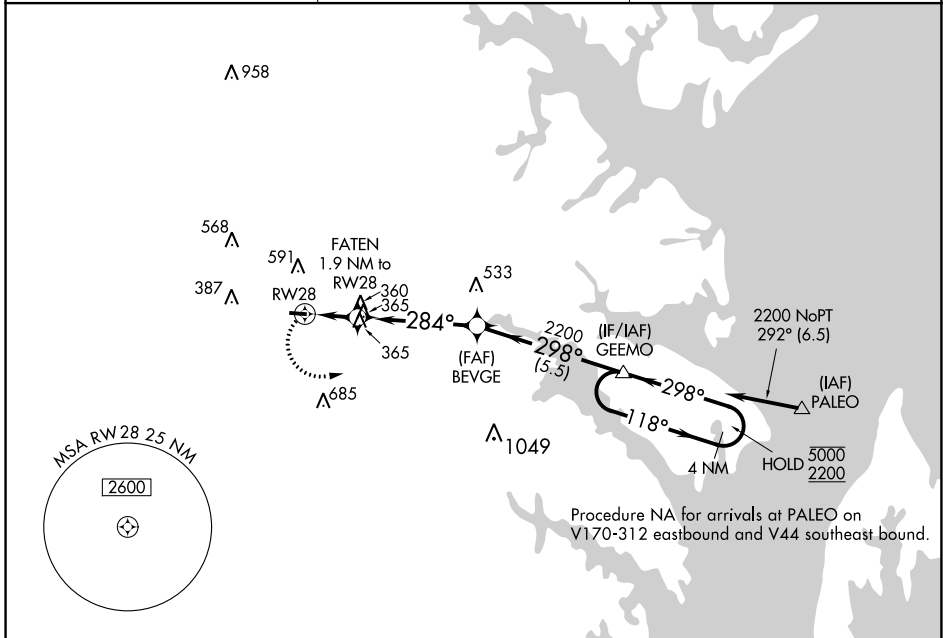
APP CRS 284°	Rwy Idg TDZE Apt Elev	3000 150 150
------------------------	-----------------------------	---

RNAV (GPS) RWY 28

TIPTON (FME)

RNP APCH - GPS.	MISSED APPROACH: Climbing left turn to 2200 direct GEEMO and hold.
<p>⚠ Rwy 28 helicopter visibility reduction below 1 SM NA.</p>	

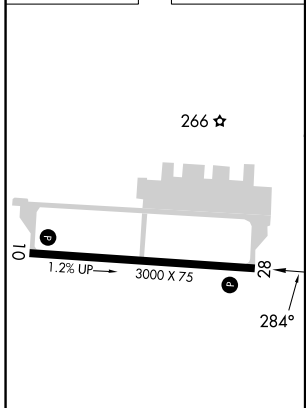
AWOS-3 123.925	POTOMAC APP CON 119.7 290.475	UNICOM 123.05 (CTAF) 📻
--------------------------	---	---



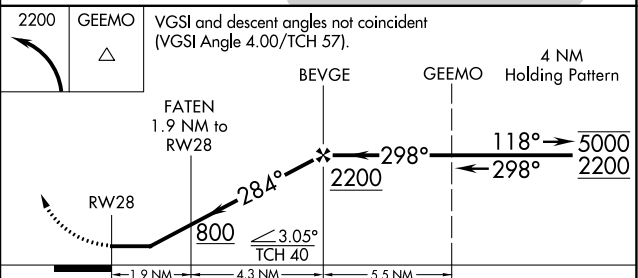
NE-3, 22 FEB 2024 to 21 MAR 2024

NE-3, 22 FEB 2024 to 21 MAR 2024

ELEV 150	TDZE 150
----------	----------



2200	GEEMO	VGSI and descent angles not coincident (VGSI Angle 4.00/TCH 57).
------	-------	--



CATEGORY	A	B	C	D
LNAV MDA	620-1	470 (500-1)		NA
CIRCLING	820-1 670 (700-1)	960-1 810 (900-1)		NA