

RNAV (GPS) RWY 15

AL-151 [USA]

GODMAN AAF (KFTK)

ARCH CRS	Rwy Idg	4853
151°	TDZE	754
	Aprt Elev	754

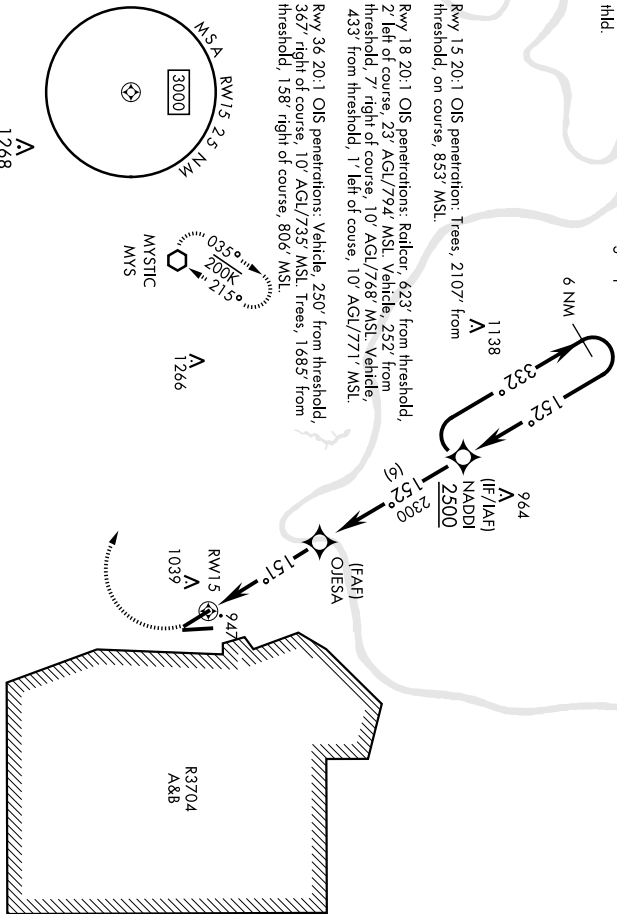
RNP APCH - GNS

*** Straight-in minimums NA or night: Helicopter visibility reduction below 1 mile NA. Circling not authorized E of Rwy 13-35. When circling to Rwy 36 or night operational VGSi required, remain on or above VGSi glidepath until threshold.

MISSED APPROACH: Climbing right turn to 3000 direct MYS VOR and hold.

ATIS	LOUISVILLE APP CON	TOWER★	GND CON
109.6	132.075 327.0	133.35 (IAF) ①	121.9 239.3

Circling to Rwy 18 or night: Operational VGSi required when train is on the track north and east of Rwy 18 (control tower will advise when train is on track) or when tower is closed. When train is on track or tower is closed remain on or above VGSi glidepath until thld.



CATEGORY	A		B		C		D	
	LNNAV MDA*	1260-1	506 (600-1)	1260-1 3/8	506 (600-1 3/8)	1340-1 1/2	1340-2	586 (600-2)
CIRCLING**	1340-1	586 (600-1)	1340-1 1/2	586 (600-1 1/2)	1340-2	586 (600-2)		

ELEV	754	TDZE	754
------	-----	------	-----

6 NM Holding Pattern	NADDI	OJESA	3000 MYS
2500 152°	152°	2300 151°	3000
		1.3 NM to RWY 15	MYS
		3.00°	4.7 NM
		TCH 45	

HRL Rwy 18-36	①	81
MRL Rwy 15-33	②	53
REIL Rwy 15	③	36
REIL Rwy 18	④	36

518 x 150 TWB 830

0.5% UP

0.5% DOWN

RNAV (GPS) RWY 18

[USA]

GODMAN AAF (KFTK)

ARCH CRS	Rwy Idg	5184
180°	TDZE	754
	Aprt Elev	754

SSAIR  direct to NADDI and hold.

▼ Circling and authorized E of Rwy 18-36. When circling to Rwy 36 at night, operational VGSJ required; remain on or above VGSJ glidepath until hld. Circling to Rwy 15 not authorized at night.

MISSED APPROACH: Climbing right to 2600, direct to NADDI and hold.

RNP APCH - GPS	LOUISVILLE APP CON	132.075 327.0	TOWER* 133.35 (CTAF) 0	GND CON	121.9 239.3
----------------	--------------------	----------------------	-------------------------------	---------	--------------------

Helicopter visibility reduction below 1 SM NA.

(IAF) MAIZE

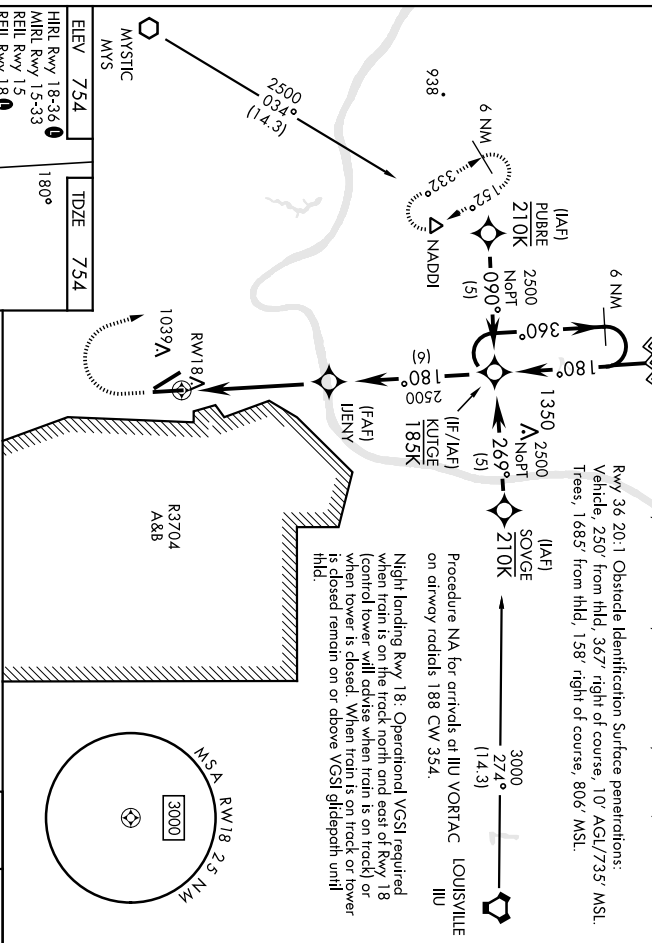
1020

Rwy 15 20:1 Obstacle Identification Surface penetration: Trees, 2107' from hld, on course, 853' MSL.

Procedure NA for arrivals at MAIZE via V171 NW bound.

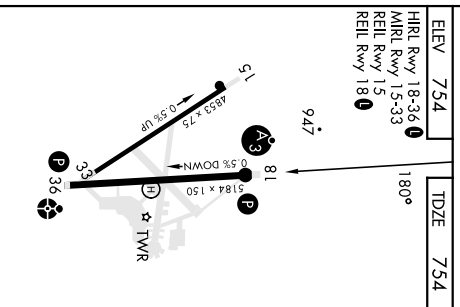
Rwy 18 20:1 Obstacle Identification Surface penetrations:
 Railcar, 623' from hld, 2' left of course, 23' AGL/794' MSL.
 Vehicle, 252' from hld, 7' right of course, 10' AGL/768' MSL.
 Vehicle, 433' from hld, 1' left of course, 10' AGL/771' MSL.

Rwy 36 20:1 Obstacle Identification Surface penetrations:
 Vehicle, 250' from hld, 367' right of course, 10' AGL/735' MSL.
 Trees, 1685' from hld, 158' right of course, 806' MSL.



Night landing Rwy 18: Operational VGSJ required when train is on the track north and east of Rwy 18 (control tower will advise when train is on track) or when tower is closed. When train is on track or tower is closed remain on or above VGSJ glidepath until hld.

Procedure NA for arrivals at ILLU VORTAC LOUISVILLE on airway radials 188 CW 354.



CATEGORY		A	B	C	D
LNAV MDA		1260-1	506 (600-1)	1260-1½	1260-1½
CIRCLING*		506 (600-1¾)	506 (600-1¾)	506 (600-1½)	506 (600-1½)
		1340-1	586 (600-1)	1340-2	1340-2
		586 (600-1½)	586 (600-1½)	586 (600-2)	586 (600-2)

RNAV (GPS) RWY 18

RNAV (GPS) RWY 36

AL-151 [USA]

GODMAN AAF (KFTK)

ARCH CRS	Rwy Idg	5184
015°	TDZE	740
	Aprt Elev	754

RNP APCH - GPS

ODALS

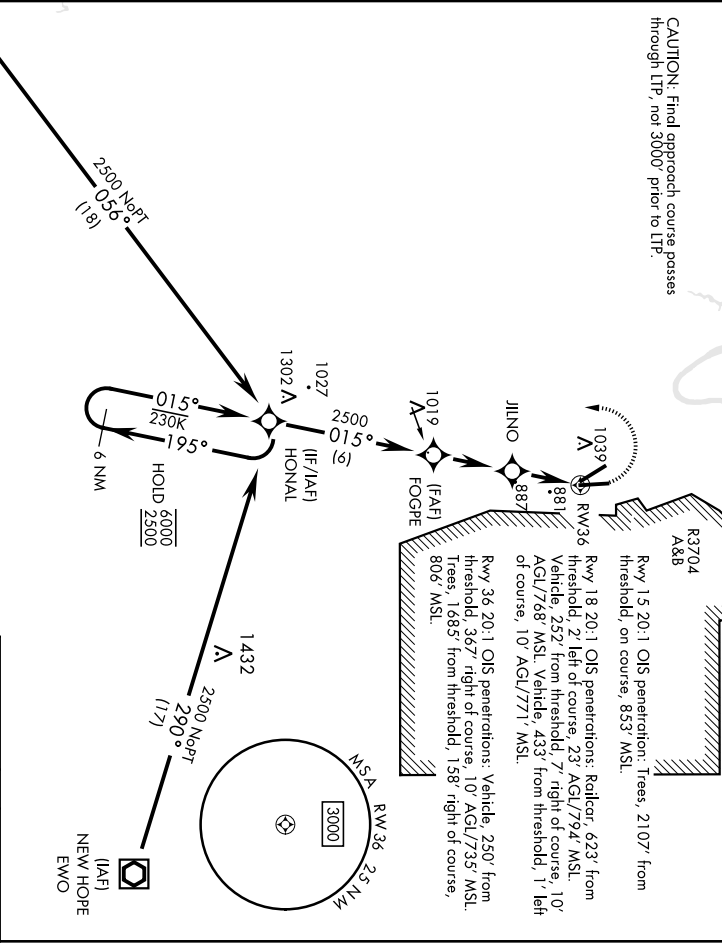
MISSED APPROACH: Climbing left turn to 2500 direct HONAL and hold.

▲ ** Straight-in Rwy 36 or night operational VGNL required, remain on or above HCSJ glidepath until threshold. When ALS Inop, increase CAT CD vis to 3/8 miles. Helicopter visibility reduction below 1 mile NA.

ATIS	LOUISVILLE APP CON	TOWER *	GND CON
109.6	132.075 327.0	133.35 (CTAF) 0	121.9 239.3

** Circling not authorized E of Rwy 18-36. Circling to Rwy 15 not authorized at night.

CAUTION: Final approach course passes through LTP, not 3000' prior to LTP.



CATEGORY	A	B	C	D
	LNNAV MDA*	1240-1 500 (500-1)	1240-1¼ 500 (500-1¼)	
	CIRCLING**	1340-1 586 (600-1)	1340-1½ 586 (600-1½)	1340-2 586 (600-2)
2500 HONAL				
VGSJ and descent angles not coincident:				
6 NM Holding Pattern				
6000 ← 195° → 015° → 2500 2500 ← 015° → 2500				
3000' TCH 55				
2500 HONAL 1580 JILNO RW36				
2500 MSA RW 36 25 NM				
(IAF) NEW HOPE EWO 1432 A 2500 MSL 290° (17) 6 NM HOLD 2500				
(IAF) OSINE 200 NoPT 050 (8)				
(IAF) RWY 18-36 754 181 REIL RWY 15 181 REIL RWY 18 36 51 5184 x 150 0.5% up 0.5% up 0.5% up				
ELEV 754 TDZE 740 HIRL Rwy 18-36 1 MIREL Rwy 15-33 REIL Rwy 15 REIL Rwy 18				

SE-1, 22 FEB 2024 to 21 MAR 2024

SE-1, 22 FEB 2024 to 21 MAR 2024

VOR/DME RWY 15

VOR/DME FTK 109.6 Chn 33	APCH CRS 146°	Rwy Idg TDZE Appt Elev 754 754	4853
--	-------------------------	--	-------------

AL-151 [USA]

GODMAN AAF (KFTK)

▼ * NA at night.
Visibility reduction by helicopters NA.

MISSED APPROACH: Climb to 1300, then climbing right turn to 2600 on heading 356° and FTK VOR/DME R-326 to ZOGUN INT/FTK 1.5 DME and hold.

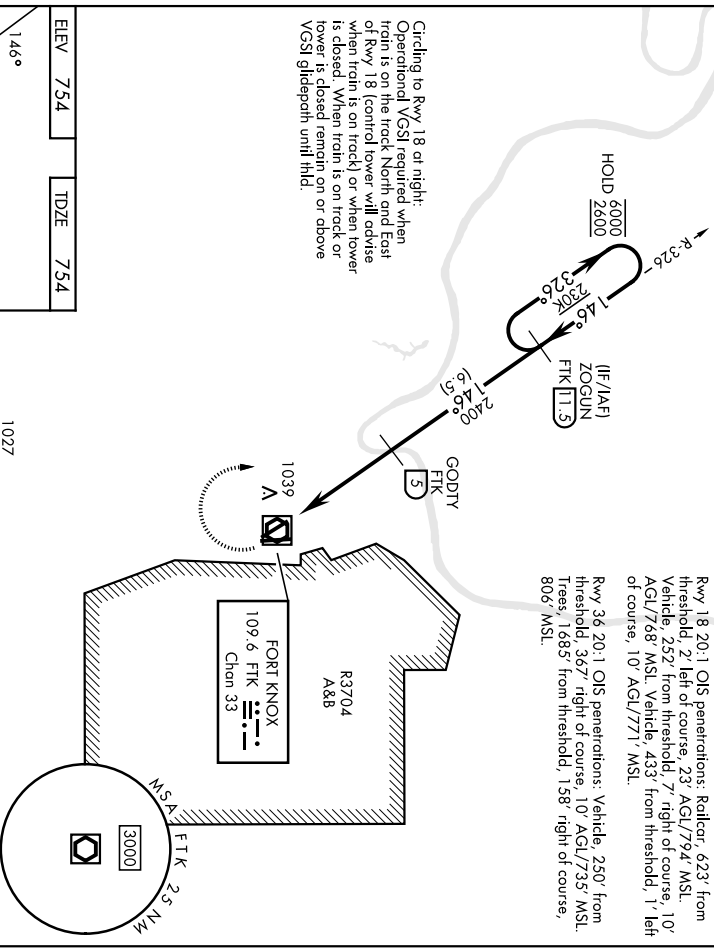
ATIS 109.6	LOUISVILLE APP CON 132.075 327.0	TOWER * 133.35 (CTAF) 0	GND CON 121.9 239.3
----------------------	--	-----------------------------------	-------------------------------

**Circling NA E of Rwy 18-36. When circling to Rwy 36 at night, operational VGSJ required, remain on or above VGSJ glidepath until threshold.

Rwy 15 20:1 OIS penetration: Trees, 2107' from threshold, on course, 853' MSL.

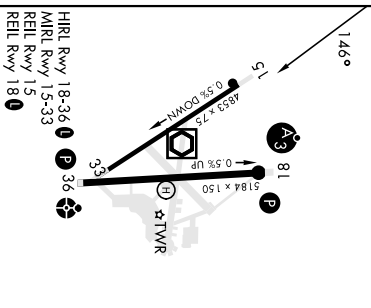
Rwy 18 20:1 OIS penetrations: Radior, 623' from threshold, 2' left of course, 23' AGL/794' MSL. Vehicle, 752' from threshold, 7' right of course, 10' AGL/768' MSL. Vehicle, 433' from threshold, 1' left of course, 10' AGL/771' MSL.

Rwy 36 20:1 OIS penetrations: Vehicle, 250' from threshold, 367' right of course, 10' AGL/735' MSL. Trees, 1685' from threshold, 158' right of course, 806' MSL.



Circling to Rwy 18 at night:
Operational VGSJ required when train is on the track North and East of Rwy 18 (control tower will advise when train is on track) or when tower is closed. When train is on track or tower is closed remain on or above VGSJ glidepath until hld.

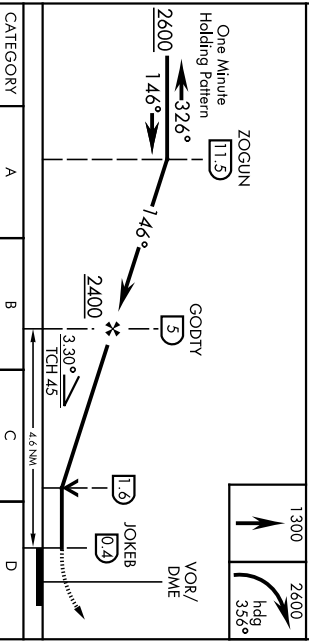
ELEV 754	TDZE 754
-----------------	-----------------



HRL Rwy 18-36 **1** **P** 36
MRL Rwy 15-33
REL Rwy 15
REL Rwy 18 **0**

FAF to MAP 4.6 NM

Knots	60	90	120	150	180
Min:Sec	4:36	3:04	2:18	1:50	1:32



CATEGORY	A	B	C	D
5-15 *	1240-1	486 (500-1)	1240-1 3/8	486 (500-1 3/8)
** CIRCLING	1340-1	586 (600-1)	1340-1 1/2	1340-2
	1340-1	586 (600-1 1/2)	586 (600-1 1/2)	586 (600-2)

37° 54' N-85° 58' W

GODMAN AAF (KFTK)

FORT KNOX, KENTUCKY
Amdt 2 13JUL23

VOR/DME RWY 15

FORT KNOX, KENTUCKY

VOR/DME RWY 18 23194

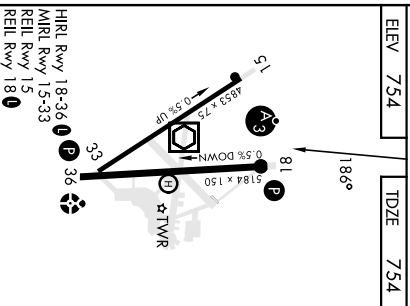
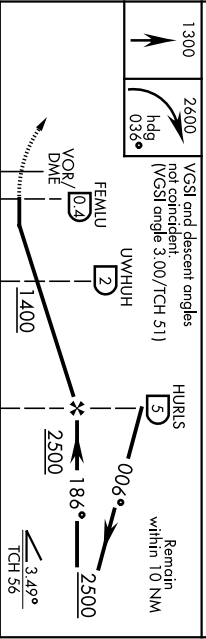
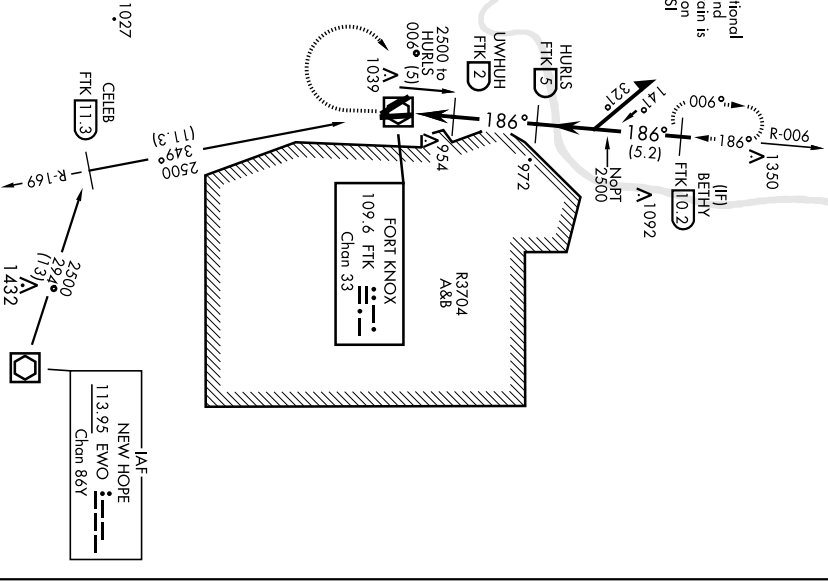
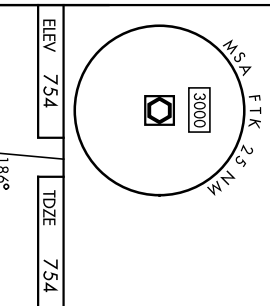
VOR/DME FTK 109.6 Chn 33	APCH CRS 186°	Rwy Idg TDZE Elev 754 754	AL-151 [USA]	MISSED APPROACH: Climb to 1300, then climbing right turn to 2600 on heading 036° and FTK VOR/DME R-006 to BETHY INT/FTK 10.2 DME and hold.	GODMAN AAF (KFTK)
▲ * Visibility reduction by helicopters NA.			SSAR A3 R-006	TOWER* 133.35 (CTAF)	GND CON 121.9 239.3
ATIS 109.6	LOUISVILLE APP CON 132.075 327.0				

**Circling NA E of Rwy 18-36. When circling to Rwy 36 at night, operational VGSJ required, remain on or above VGSJ glidepath until threshold. Circling to Rwy 15 NA or right.

Straight-in operations to Rwy 18 at night: Operational VGSJ required when train is on the track North and East of Rwy 18 (control tower will advise when train is on track) or when tower is closed. When train is on track or tower is closed, remain on or above VGSJ glidepath until thld.

Rwy 15 20:1 OIS penetration: Trees, 2107' from threshold, on course, 8537' MSL.
 Rwy 18 20:1 OIS penetrations: Reilcar, 623' from threshold; 2' left of course; 23' AGL/ 794 MSL. Vehicle; 232' from threshold; 7' right of course; 10' AGL/ 768 MSL. Vehicle; 433' from threshold; 1' left of course; 10' AGL/ 771 MSL.

Rwy 36 20:1 OIS penetrations: Vehicle, 250' from threshold; 367' right of course; 10' AGL/ 735' MSL. Trees; 1685' from threshold; 158' right of course; 806' MSL.



CATEGORY	A	B	C	D
S-18 *	1240-1 486 (500-1)		1240-1 3/8 486 (500-1 3/8)	
** CIRCLING	1340-1 586 (600-1)		1340-1 1/2 586 (600-1 1/2)	1340-2 586 (600-2)

FORT KNOX, KENTUCKY
Amdt 2 13JUL23

37°54'N-85°58'W

VOR/DME RWY 18 GODMAN AAF (KFTK)

VOR/DME FTK 109.6 Chan 33	APCH CRS 349°	Rwy Idg TDZE Arpl Elev 740 754
---	-------------------------	--

AL-151 [USA]

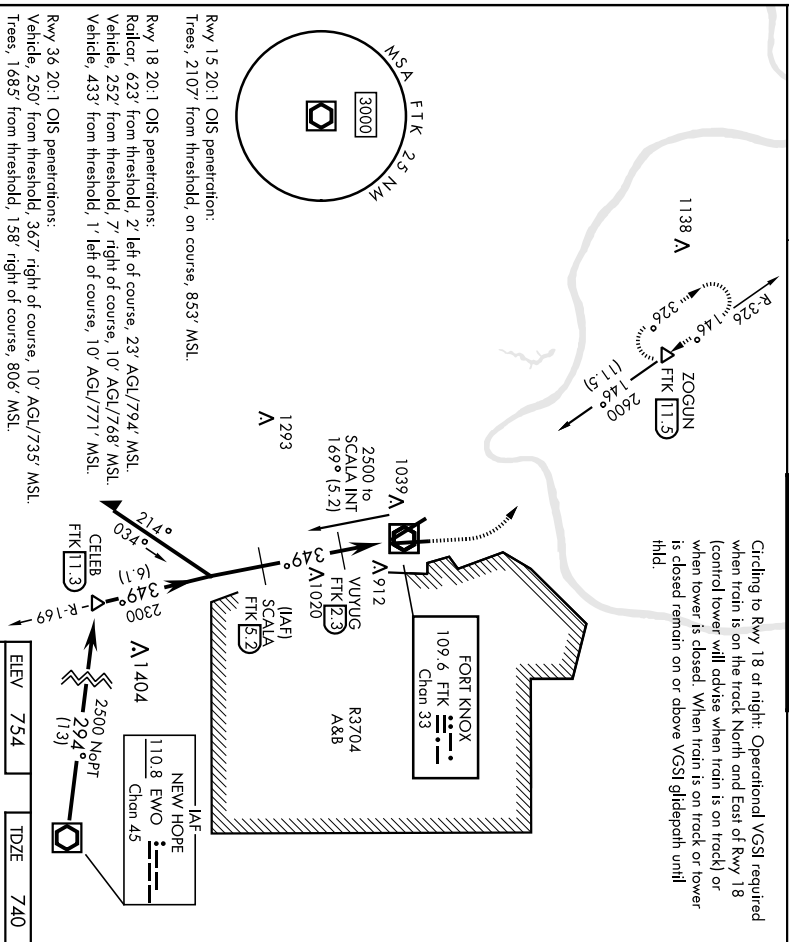
GODMAN AAF (KFTK)

▲ * At night, operational VGSJ required, remain on or above VGSJ glidepath until threshold.
Visibility reduction by helicopters not authorized.
** Circling NA E of Rwy 18-36. Circling to rwy 1,5 NA at night.

ODAS
MISSED APPROACH: Climb to 1400, then climbing left turn to 2600 on FTK VOR/DME R-326 to ZOZGUN INT/FTK 11.5 DME and hold.

ATIS 109.6	LOUISVILLE APP CON 132.075 327.0	TOWER * 133.35 (CAAF) 0	GND CON 121.9 239.3
----------------------	--	--	-------------------------------

Circling to Rwy 18 at night: Operational VGSJ required when train is on the track North and East of Rwy 18 (control tower will advise when train is on track) or when tower is closed. When train is on track or tower is closed remain on or above VGSJ glidepath until hld.



SE-1, 22 FEB 2024 to 21 MAR 2024

SE-1, 22 FEB 2024 to 21 MAR 2024

VGSJ and descent angles not coincident (VGSJ angle 3.00/TCH 60).			
VOR/DME WESIK FTK 0.3	VUVUG FTK 2.3	SCALA FTK 5.2	1400 2600 ZOGUN
Remain within 10 NM of SCALA			
CATEGORY	A	B	C
S-36 *	1180-1	440 (500-1)	1180-1½ 440 (500-1½)
◻ CIRCLING **	1340-1	586 (600-1)	1340-1½ 586 (600-1½)
HIRL Rwy 18-36 0			
MREL Rwy 15-33			
REIL Rwy 15			
REIL Rwy 18 0			
ELEV 754			
TDZE 740			

FORT KNOX, KENTUCKY
Anch 2 10AUG23
37°54'N-85°58'W
GODMAN AAF (KFTK)
VOR/DME RWY 36