

WAAS CH <b>61017</b> <b>W02A</b>	APP CRS <b>015°</b>	Rwy Idg <b>5500</b> TDZE <b>978</b> Apt Elev <b>984</b>
--	------------------------	---

# RNAV (GPS) RWY 2

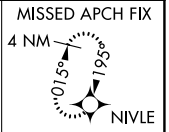
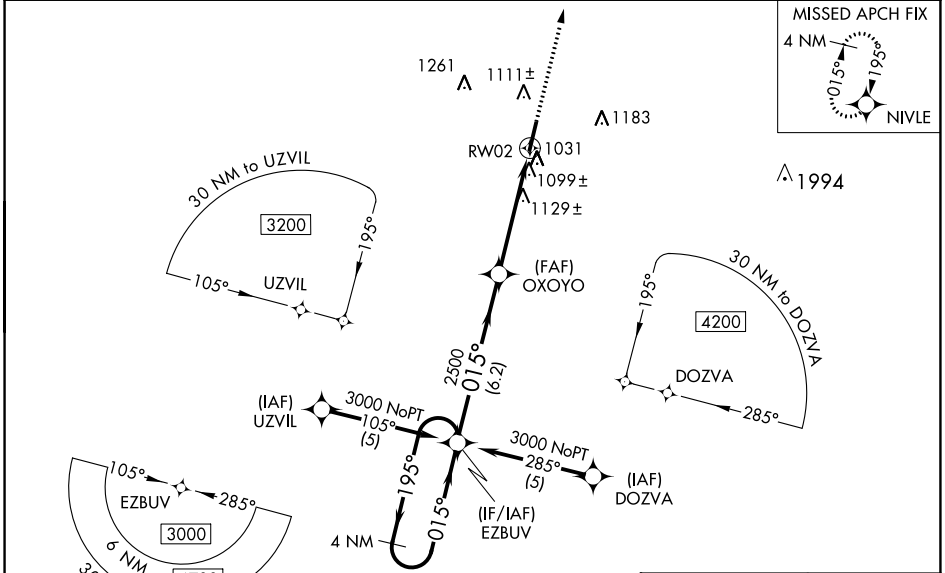
FAYETTEVILLE MUNI (FYM)

RNP APCH - GPS

Baro-VNAV and VDP NA when using Huntsville Exec Tom Sharp Jr fld altimeter setting. For uncompensated Baro-VNAV systems, LNAV/VNAV NA below -16°C (4°F) or above 46°C (114°F). Rwy 2 helicopter visibility reduction below ¼ SM NA. When local altimeter setting not received use Huntsville Exec Tom Sharp Jr fld altimeter setting and increase LPV DA to 1341 feet and all visibilities ¼ SM; LNAV/VNAV DA to 1519 feet and all visibilities ½ SM; increase all MDAs 120 feet and LNAV Cat C and Circling Cat D visibility ¼ SM, LNAV Cat D and Circling Cat C visibility ½ SM.

MISSED APPROACH: Climb to 3000 direct NIVLE and hold.

AWOS-3 <b>135.275</b>	HUNTSVILLE APP CON * <b>125.6 354.1</b>	CLNC DEL (GCO) <b>121.725</b>	UNICOM <b>122.8 (CTAF) 0</b>
--------------------------	--	----------------------------------	---------------------------------

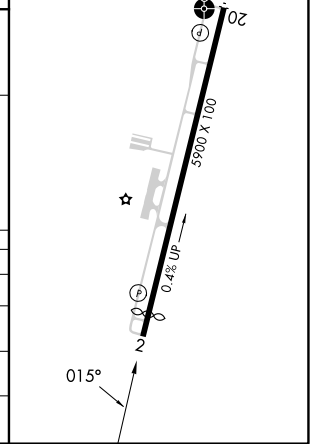
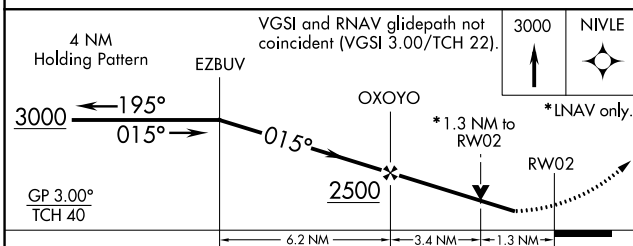


SE-1, 22 FEB 2024 to 21 MAR 2024

SE-1, 22 FEB 2024 to 21 MAR 2024

ELEV 984	TDZE 978
----------	----------

MIRL Rwy 2-20  
REIL Rwys 2 and 20



CATEGORY	A	B	C	D
LPV DA		1228-1	250 (300-1)	
LNAV/VNAV DA		1406-1½	428 (500-1½)	
LNAV MDA	1380-1	402 (400-1)	1380-1¼	402 (400-1¼)
CIRCLING	1420-1 436 (500-1)	1540-1 556 (600-1)	1580-1½ 596 (600-1½)	1580-2 596 (600-2)

WAAS CH <b>65717</b> <b>W20A</b>	APP CRS <b>195°</b>	Rwy Idg <b>5900</b> TDZE <b>984</b> Apt Elev <b>984</b>
--	------------------------	---

# RNAV (GPS) RWY 20

FAYETTEVILLE MUNI (FYM)

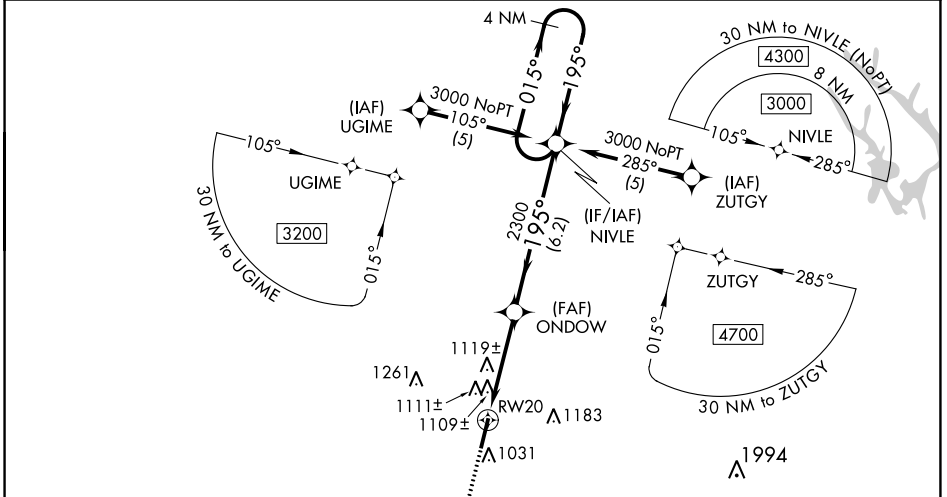
RNP APCH - GPS

▼ For uncompensated Baro-VNAV systems, LNAV/VNAV NA below -16°C (4°F) or above 46°C (114°F). Rwy 20 helicopter visibility reduction below ¾ SM NA. When local altimeter setting not received use Huntsville Exec Tom Sharp Jr Fld altimeter setting and increase LPV DA to 1373 feet and all visibilities ½ SM; LNAV/VNAV DA to 1561 feet and all visibilities ¼ SM; increase all MDAs 120 feet and LNAV Cat C/D and Circling Cat C visibility ½ SM, Circling Cat D visibility ¼ SM. Baro-VNAV and VDP NA when using Huntsville Exec Tom Sharp Jr Fld altimeter setting. Inoperative table does not apply to LNAV/VNAV all Cats. Inoperative table does not apply to LNAV Cat C when using Huntsville Exec Tom Sharp Jr Fld altimeter setting.

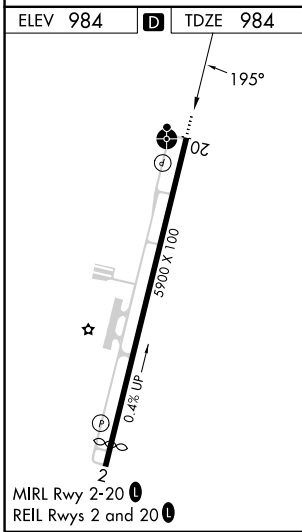
ODALS

MISSED APPROACH: Climb to 3000 direct EZBUB and hold.

AWOS-3 <b>135.275</b>	HUNTSVILLE APP CON * <b>125.6 354.1</b>	CLNC DEL (GCO) <b>121.725</b>	UNICOM <b>122.8 (CTAF) 0</b>
--------------------------	--	----------------------------------	---------------------------------



ELEV 984 **D** TDZE 984



3000 EZBUB VCSI and RNAV glidepath not coincident (VCSI Angle 3.00/TCH 20). 4 NM Holding Pattern

\*LNAV only. 1.2 NM to RW20

ONDOW 2300 NIVLE 3000

GP 3.00° TCH 40

CATEGORY	A	B	C	D
LPV DA	1260-1 276 (300-1)			
LNAV/VNAV DA	1448-1¾ 464 (500-1¾)			
LNAV MDA	1380-¾ 396 (400-¾)			1380-1¼ 396 (400-1¼)
CIRCLING	1420-1 436 (500-1)	1540-1 556 (600-1)	1580-1½ 596 (600-1½)	1580-2 596 (600-2)

SE-1, 22 FEB 2024 to 21 MAR 2024

SE-1, 22 FEB 2024 to 21 MAR 2024

VORTAC RQZ <b>112.2</b> Chan <b>59</b>	APP CRS <b>010°</b>	Rwy Idg <b>5500</b> TDZE <b>978</b> Apt Elev <b>984</b>
--	------------------------	---

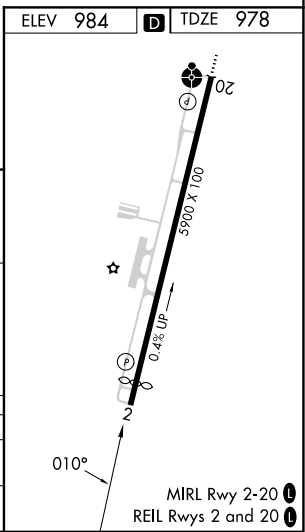
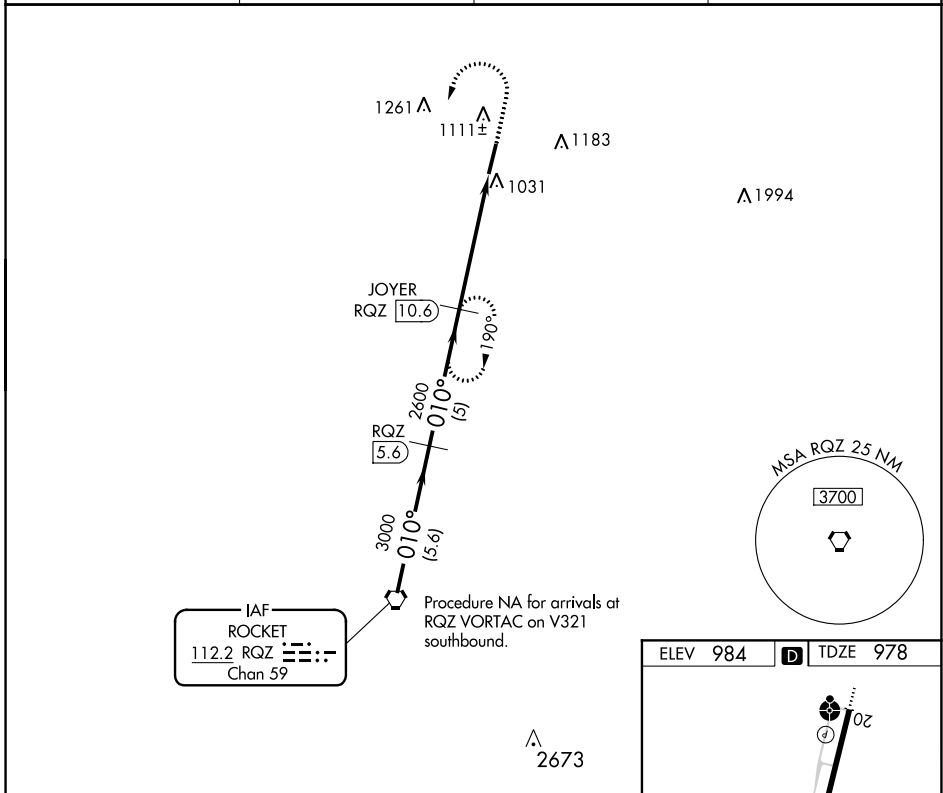
# VOR/DME RWY 2

FAYETTEVILLE MUNI (FYM)

**⚠** When local altimeter setting not received, use Huntsville Exec Tom Sharp Jr Fld altimeter setting and increase all MDA 120 feet; increase S-2 Cat C/D visibility ¼ SM, Circling Cat C visibility ½ SM, and Circling Cat D visibility ¼ SM. Rwy 2 helicopter visibility reduction below ¾ SM NA.

**⚠ NA** MISSED APPROACH: Climb to 2000 then climbing left turn to 3000 via RQZ R-010 to JOYER INT and hold.

AWOS-3 <b>135.275</b>	HUNTSVILLE APP CON * <b>125.6 354.1</b>	CLNC DEL (GCO) <b>121.725</b>	UNICOM <b>122.8 (CTAF)</b>
--------------------------	--	----------------------------------	-------------------------------



RQZ VORTAC	VGSI and descent angles not coincident (VGSI 3.00/TCH 22).			
	4000	3000	2600	2000
Procedure Turn	NA	NA	NA	NA
Category	A	B	C	D
S-2	1400-1	422 (500-1)	1400-1¼ 422 (500-1¼)	1400-1½ 422 (500-1½)
CIRCLING	1420-1 436 (500-1)	1540-1 556 (600-1)	1580-1½ 596 (600-1½)	1580-2 596 (600-2)

SE-1, 22 FEB 2024 to 21 MAR 2024

SE-1, 22 FEB 2024 to 21 MAR 2024