

APP CRS	Rwy Idg	<b>4100</b>
<b>083°</b>	TDZE	<b>3669</b>
	Apt Elev	<b>3703</b>

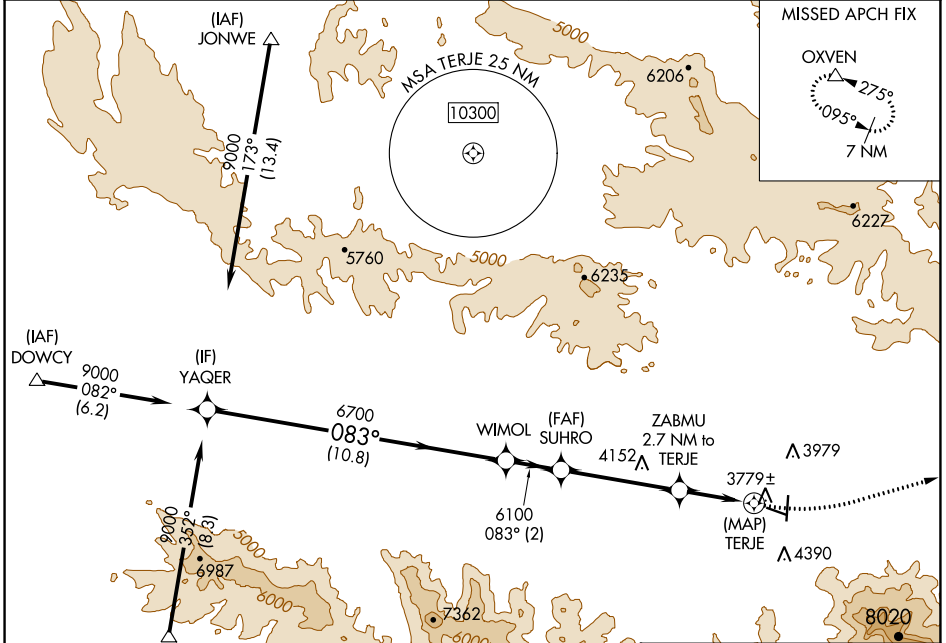
# RNAV (GPS) Y RWY 9

GRANT COUNTY RGNL/OGLIVIE FLD (GCD)

**⚠** When local altimeter setting not received, procedure NA.  
**⚠** Circling NA south of Rwy 9-27. DME/DME RNP-0.3 NA.  
 Helicopter visibility reduction below 3/4 SM not authorized.

MISSED APPROACH: Climbing left turn to 12000 direct OXVEN and hold, continue climb-in-hold to 12000.

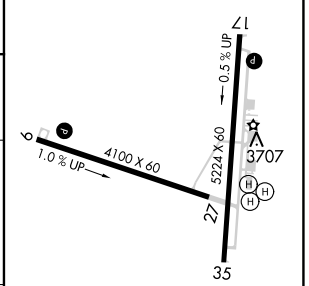
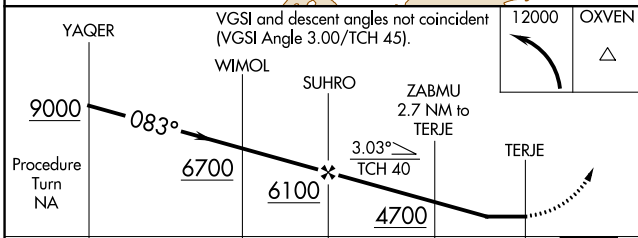
AWOS-3 <b>118.375</b>	SEATTLE CENTER <b>128.15 257.75</b>	UNICOM <b>122.8 (CTAF) 0</b>
--------------------------	--	---------------------------------



NW-1, 22 FEB 2024 to 21 MAR 2024

NW-1, 22 FEB 2024 to 21 MAR 2024

ELEV 3703	TDZE 3669
-----------	-----------



CATEGORY	A	B	C	D
LNVA MDA	4280-1 611 (600-1)	611 (600-1)	4280-1 3/4 611 (600-1 3/4)	NA
CIRCLING	4280-1 577 (600-1)	4520-1 1/4 817 (900-1 1/4)	5160-3 1457 (1500-3)	NA

REIL Rwy 17 and 9 0

MIRL Rwy 9-27 and 17-35 0

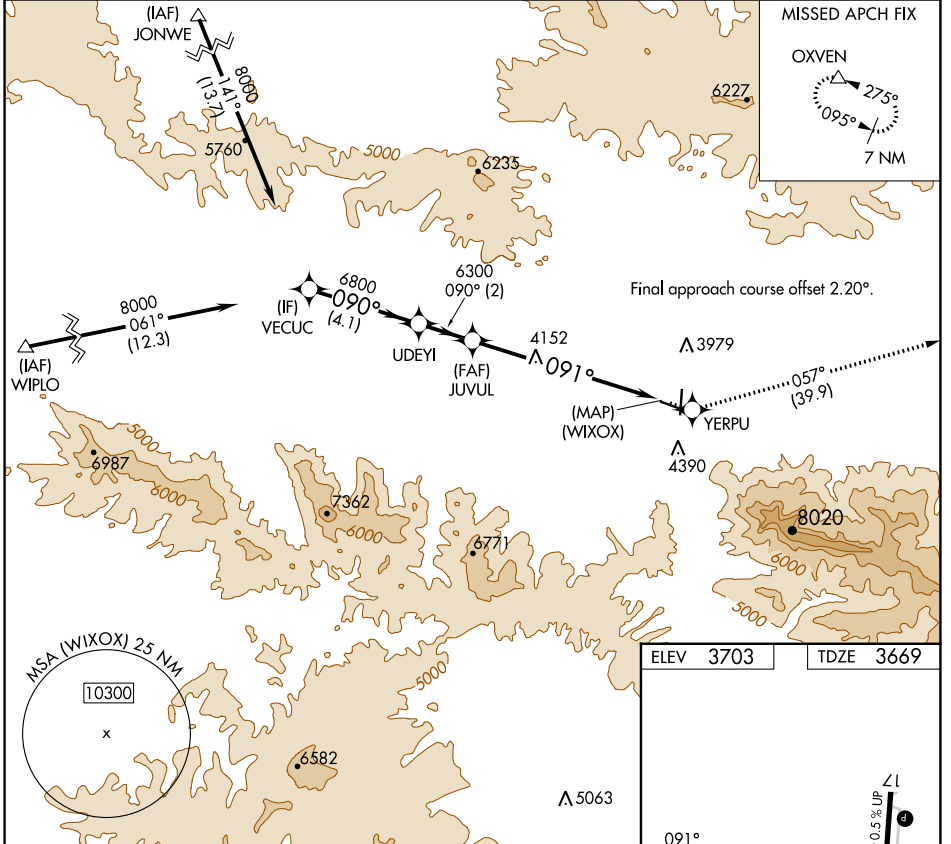
WAAS CH <b>73010</b> <b>W09A</b>	APP CRS <b>091°</b>	Rwy Idg <b>4100</b> TDZE <b>3669</b> Apt Elev <b>3703</b>
--	------------------------	---

# RNAV (GPS) Z RWY 9

GRANT COUNTY RGNL/OGLIVIE FLD (GCD)

RNP APCH - GPS.	MISSED APPROACH: Climb to 12000 direct YERPU and on track 057° to OXVEN and hold, continue climb-in-hold to 12000.
▼ When local altimeter setting not received, procedure NA. Rwy 9 helicopter visibility reduction below 3/4 SM NA.	

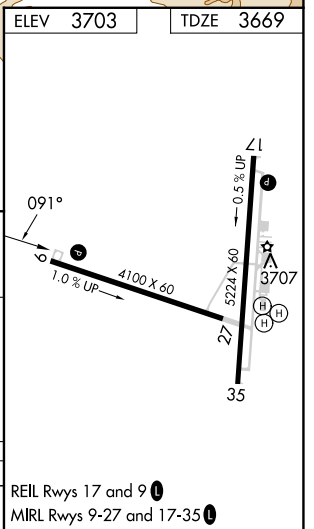
AWOS-3 <b>118.375</b>	SEATTLE CENTER <b>128.15 257.75</b>	UNICOM <b>122.8</b> (CTAF) <b>0</b>
--------------------------	--	--



NW-1, 22 FEB 2024 to 21 MAR 2024

NW-1, 22 FEB 2024 to 21 MAR 2024

VECUC		UDEYI		JUUVUL		12000		YERPU		OXVEN	
8000		6800		6300		↑		✧		△	
GP 3.40°		TCH 54		6300		VGSI and RNAV glidepath not coincident (VGSI Angle 3.00/TCH 45).		(WIXOX)			
4.1 NM		2 NM		7.1 NM							
CATEGORY	A	B	C	D							
LPV DA	4269-2 600 (600-2)			NA							



REIL Rwys 17 and 9 **0**  
MRL Rwys 9-27 and 17-35 **0**