

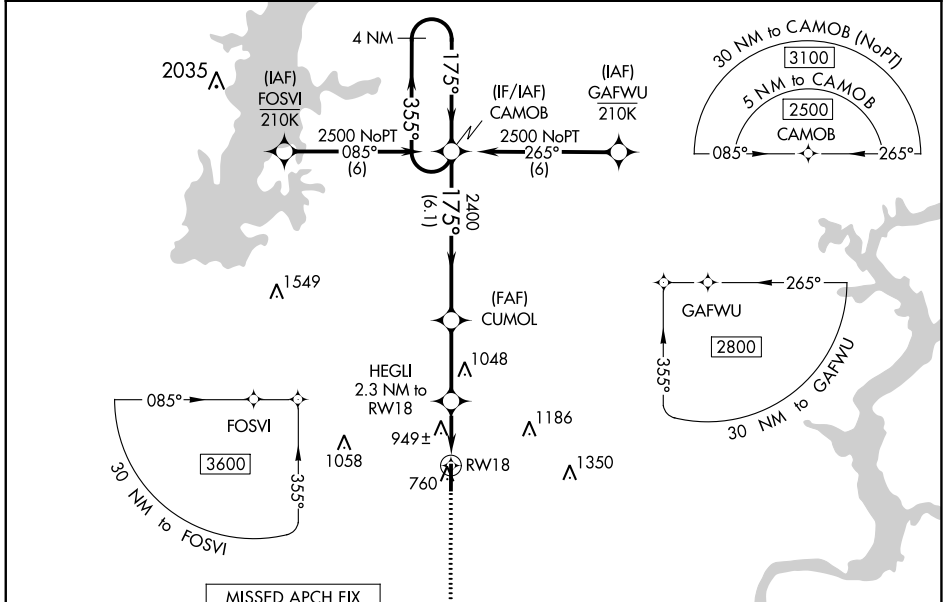
WAAS CH 63214 W18A	APP CRS 175°	Rwy Idg 5200 TDZE 718 Apt Elev 733
--	------------------------	---

RNAV (GPS) RWY 18

CLAREMORE RGNL (GCM)

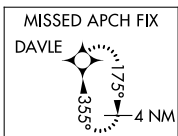
<p>For uncompensated Baro-VNAV systems, LNAV/VNAV NA below -16°C (4°F) or above 54°C (130°F). DME/DME RNP-0.3 NA. For inop ALS, increase LNAV/VNAV Cats A/B visibility to 1% SM.</p>	ODALS	MISSED APPROACH: Climb to 2400 direct DAVLE and hold.

AWOS-3PT 119,925	TULSA APP CON 119.1 360,825	UNICOM 122.7 (CTAF) 0
----------------------------	---------------------------------------	---------------------------------

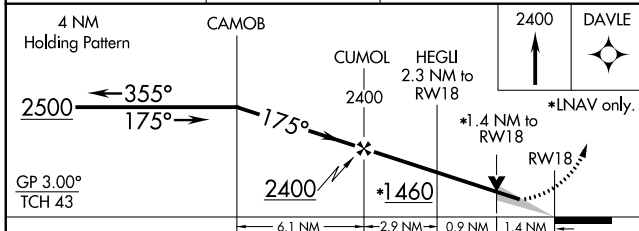
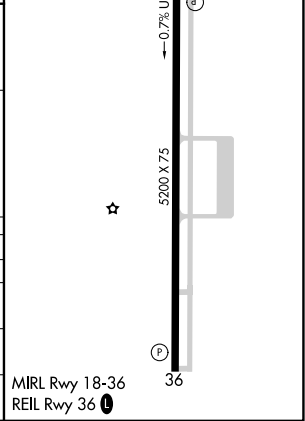


SC-1, 22 FEB 2024 to 21 MAR 2024

SC-1, 22 FEB 2024 to 21 MAR 2024



ELEV 733	TDZE 718
----------	----------



CATEGORY	A	B	C	D
LPV DA	968- ³ / ₄	250 (300- ³ / ₄)		NA
LNAV/VNAV DA	1281-1 ¹ / ₂	563 (600-1 ¹ / ₂)		NA
LNAV MDA	1200- ³ / ₄	482 (500- ³ / ₄)	1200-1 ¹ / ₄ 482 (500-1 ¹ / ₄)	NA
C CIRCLING	1260-1	527 (600-1)	1380-1 ³ / ₄ 647 (700-1 ³ / ₄)	NA

VORTAC TUL 114.4 Chan 91	APP CRS 060°	Rwy Idg TDZE Apt Elev N/A N/A 733
--	------------------------	---

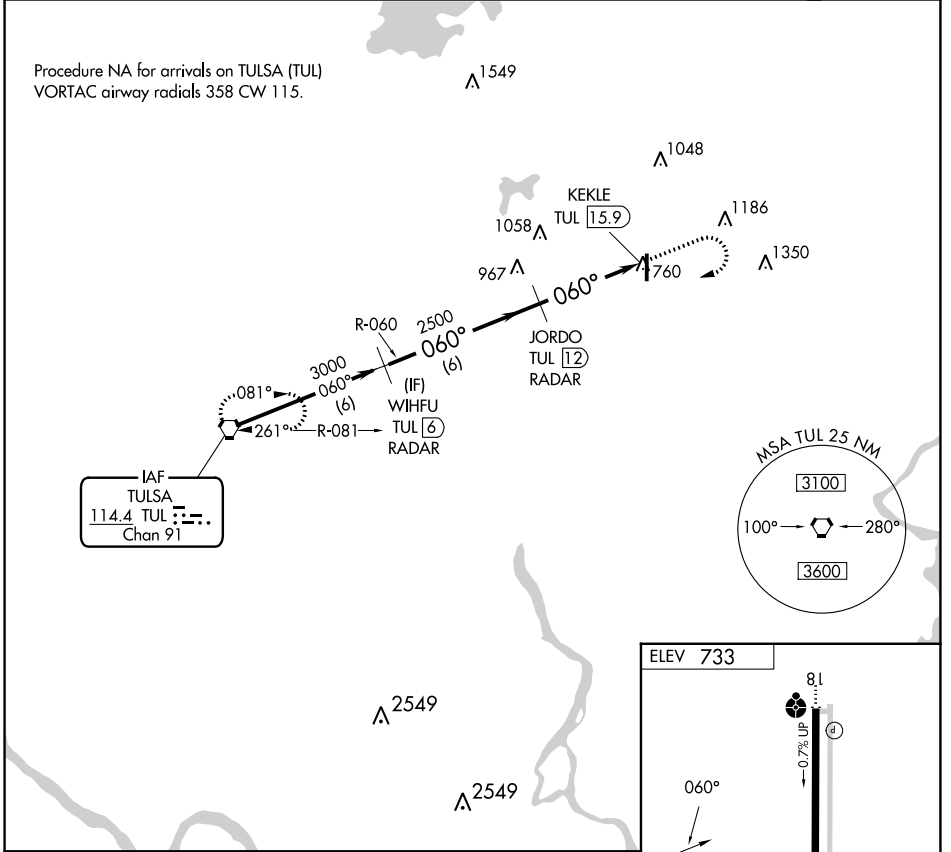
VOR/DME-B

CLAREMORE RGNL (GCM)

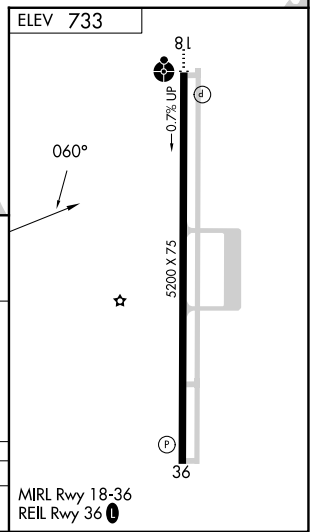
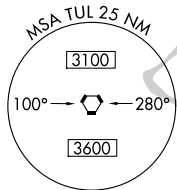
▽ If local altimeter setting not received, use Tulsa Intl altimeter setting and increase all MDAs 60 feet.

MISSED APPROACH: Climb to 2500 then climbing right turn to 3000 direct TUL VORTAC and hold.

AWOS-3PT 119.925	TULSA APP CON 119.1 360.825	UNICOM 122.7 (CTAF) 0
----------------------------	---------------------------------------	---------------------------------



IAF
TULSA
114.4 TUL
Chan 91



Procedure Turn NA	WIHFU TUL 6 RADAR	JORDO TUL 12 RADAR	KEKLE TUL 15.9	
	2500	3000	TUL	
3000	2500			
	6 NM	3.9 NM		
CATEGORY	A	B	C	D
C CIRCLING	1260-1	527 (600-1)	1380-1 ³ / ₄ 647 (700-1 ³ / ₄)	NA

SC-1, 22 FEB 2024 to 21 MAR 2024

SC-1, 22 FEB 2024 to 21 MAR 2024