

WAAS CH <b>56602</b> <b>W25A</b>	APP CRS <b>248°</b>	Rwy Idg <b>5004</b> TDZE <b>949</b> Apt Elev <b>949</b>
--	------------------------	---

# RNAV (GPS) RWY 25

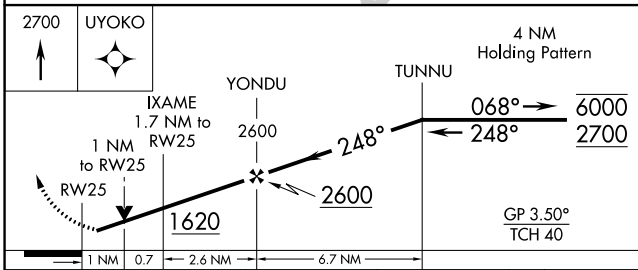
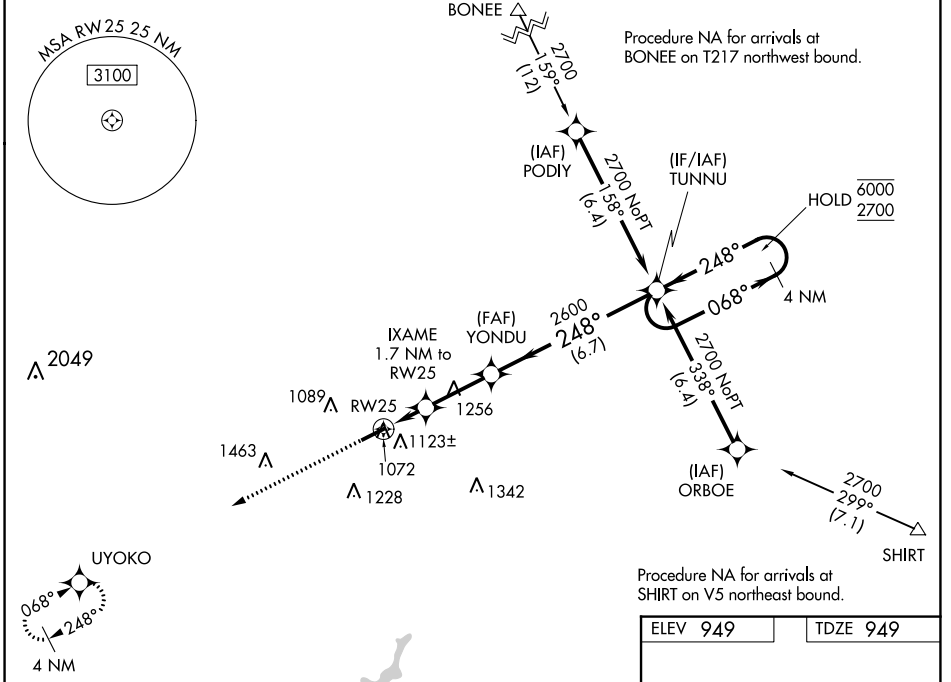
GREENE COUNTY/LEWIS A JACKSON RGNL (GDK)

RNP APCH - GPS.

For uncompensated Baro-VNAV systems, LNAV/VNAV NA below -16°C or above 54°C.  
 Rwy 25 helicopter visibility reduction below ¼ SM NA. VDP and Baro-VNAV NA when using Dayton/Wright Brothers altimeter setting. When local altimeter setting not received, use Dayton/Wright Brothers altimeter setting: increase LPV DA to 1249 feet; increase LNAV/VNAV DA to 1252 feet; increase all MDA 40 feet and LNAV visibility Cat C ½ SM.

MISSED APPROACH:  
 Climb to 2700 direct UYOKO and hold.

AWOS-3 <b>118.525</b>	COLUMBUS APP CON <b>118.85 269.275</b>	UNICOM <b>122.725 (CTAF) 0</b>
--------------------------	---	-----------------------------------



ELEV 949	TDZE 949
----------	----------

5004 x 75

949

0.8% UP

248°

MIRL Rwy 7-25 0

REIL Rwy 7 and 25 0

CATEGORY	A	B	C	D
LPV DA	1219-1	270 (300-1)		NA
LNAV/VNAV DA	1222-1	273 (300-1)		NA
LNAV MDA	1340-1	391 (400-1)	1340-1 3/8 391 (400-1 1/8)	NA
CIRCLING	1480-1	531 (600-1)	1560-1 3/4 611 (700-1 3/4)	NA

EC-2, 22 FEB 2024 to 21 MAR 2024

EC-2, 22 FEB 2024 to 21 MAR 2024

WAAS CH <b>97702</b> <b>W07A</b>	APP CRS <b>068°</b>	Rwy Idg <b>5004</b> TDZE <b>932</b> Apt Elev <b>949</b>
--	------------------------	---

# RNAV (GPS) RWY 7

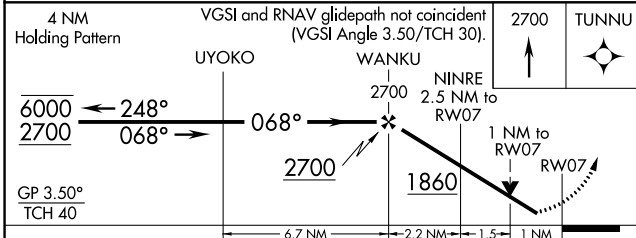
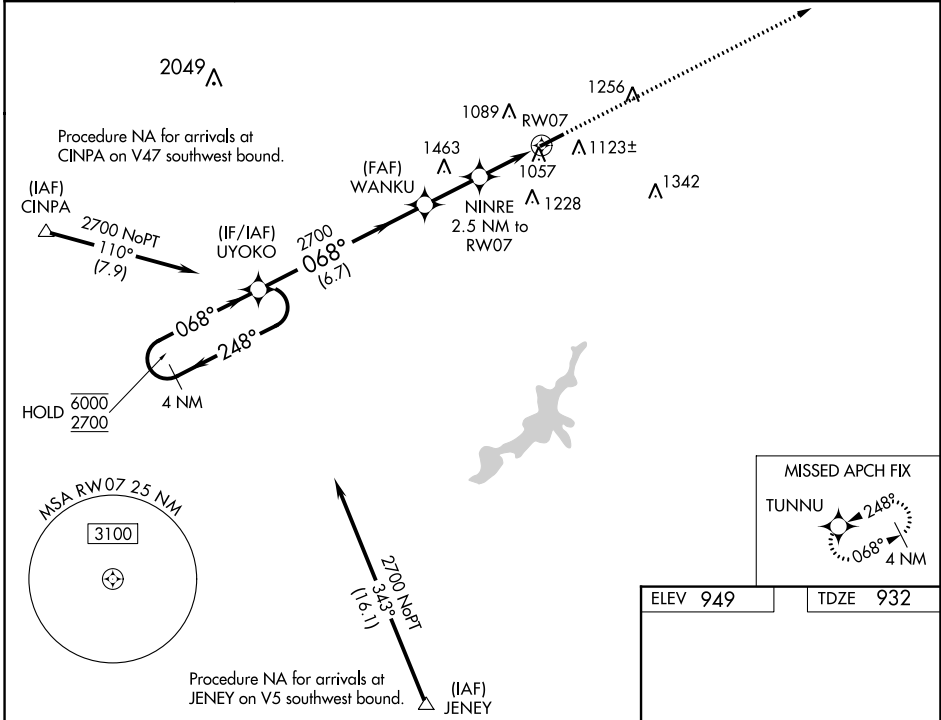
GREENE COUNTY/LEWIS A JACKSON RGNL (GDK)

RNP APCH - GPS.

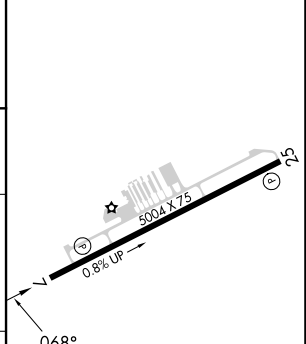
**⚠** When local altimeter setting not received, use Dayton/Wright Brothers altimeter setting: increase LPV DA to 1235 feet; increase LNAV/VNAV DA to 1268 feet; increase all MDA 40 feet and LNAV visibility Cat C 1/8 SM. Rwy 7 helicopter visibility reduction below 3/4 SM NA. VDP and Baro-VNAV NA when using Dayton/Wright Brothers altimeter setting. For uncompensated Baro-VNAV systems, LNAV/VNAV NA below -16°C or above 54°C.

**MISSED APPROACH:**  
Climb to 2700 direct TUNNU and hold.

AWOS-3 <b>118.525</b>	COLUMBUS APP CON <b>118.85 269.275</b>	UNICOM <b>122.725 (CTAF) 0</b>
--------------------------	---	-----------------------------------



ELEV 949	TDZE 932
----------	----------



CATEGORY	A	B	C	D
LPV DA	1205-1	273 (300-1)		NA
LNAV/VNAV DA	1238-1	306 (300-1)		NA
LNAV MDA	1320-1	388 (400-1)	1320-1/8 388 (400-1/8)	NA
<b>CIRCLING</b>	1480-1	531 (600-1)	1560-1 3/4 611 (700-1 3/4)	NA

MIRL Rwy 7-25 0  
REIL Rws 7 and 25 0

EC-2, 22 FEB 2024 to 21 MAR 2024

EC-2, 22 FEB 2024 to 21 MAR 2024