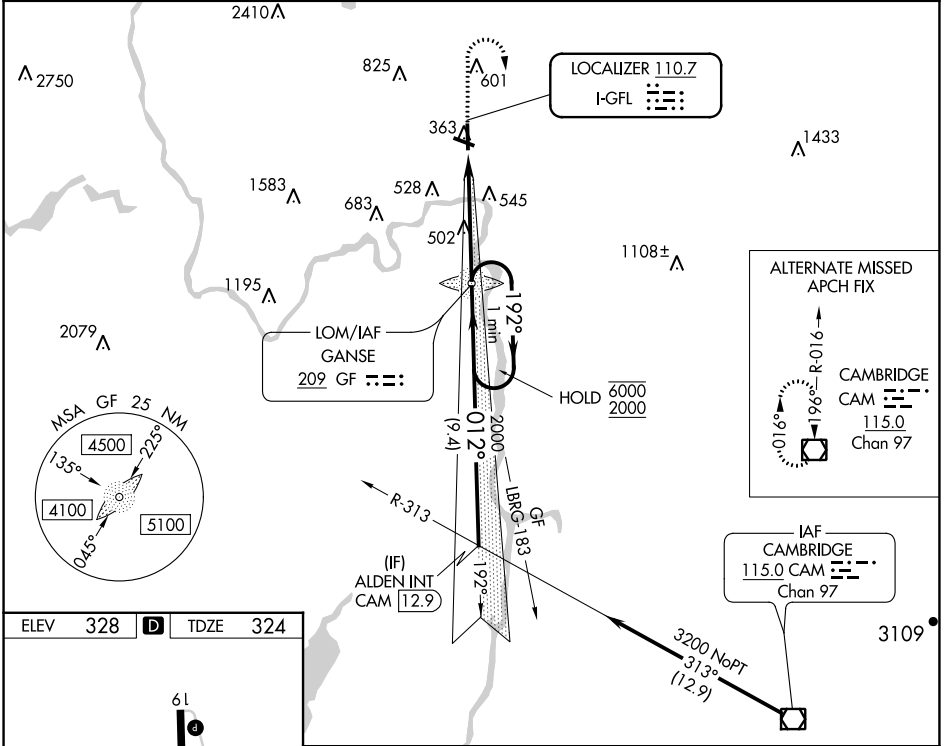


LOC I-GFL <b>110.7</b>	APP CRS <b>012°</b>	Rwy Idg TDZE Apt Elev	<b>5000</b> <b>324</b> <b>328</b>
---------------------------	------------------------	-----------------------------	---

# ILS or LOC RWY 1

FLOYD BENNETT MEML (GFL)

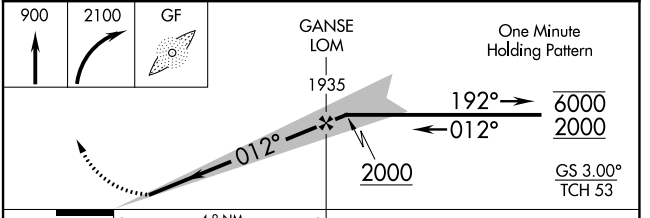
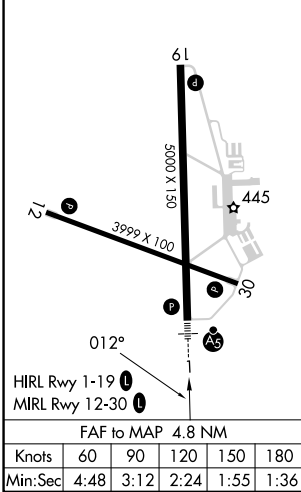
ADF required.		MALSR	MISSED APPROACH: Climb to 900 then climbing right turn to 2100 direct GANSE LOM and hold.
<p>⚠ Circling NA for Cat D north of Rwy 12 and 19.</p> <p>⚠ Circling Rwy 12, 30 NA at night.</p> <p>❄ -19°C For inop ALS, increase S-LOC 1 Cat C/D visibility to 1 3/8 SM.</p>			
ASOS <b>119.925</b>	ALBANY APP CON <b>132.825 307.2</b>	UNICOM <b>123.0 (CTAF)</b>	



NE-2, 22 FEB 2024 to 21 MAR 2024

NE-2, 22 FEB 2024 to 21 MAR 2024

ELEV 328	<b>D</b>	TDZE 324
----------	----------	----------



CATEGORY	A	B	C	D
S-ILS 1	524-1/2		200 (200-1/2)	
S-LOC 1	820-1/2	496 (500-1/2)	820-1	496 (500-1)
<b>C</b> CIRCLING	840-1 512 (600-1)	860-1 532 (600-1)	940-1 3/4 612 (700-1 3/4)	1460-3 1132 (1200-3)

WAAS CH <b>87118</b> W01A	APP CRS <b>012°</b>	Rwy ldg 5000 TDZE 324 Apt Elev 328
---------------------------------	------------------------	---

# RNAV (GPS) RWY 1

FLOYD BENNETT MEML (GFL)

**⚠** For uncompensated Baro-VNAV systems, LNAV/VNAV NA below -18°C (0°F) or above 54°C (130°F). DME/DME RNP-0.3 NA. When local altimeter setting not received use Albany altimeter setting and increase all DA 91 feet and all MDA 100 feet; increase LNAV/VNAV all Cats ½ SM, LNAV Cat C/D and Circling Cat C visibility ¼ SM. For inoperative ALS when using Albany altimeter setting, increase LPV all Cats visibility to ½ SM. Baro-VNAV and VDP NA when using Albany altimeter setting. Circling Rwy 12, 30 NA at night. Rwy 12, 30 helicopter visibility reduction below 1 SM NA.

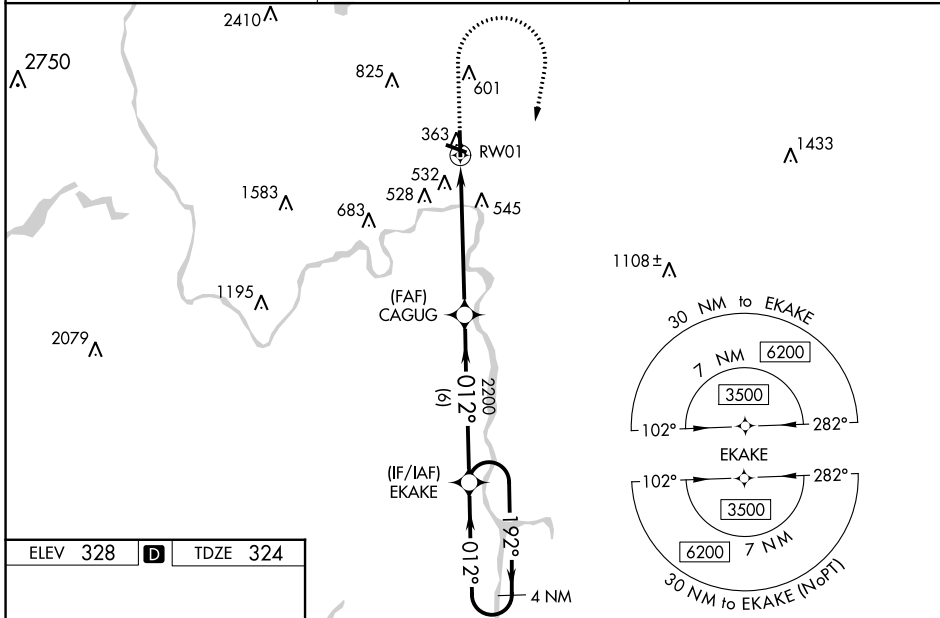
MALSR



**MISSED APPROACH:**  
Climb to 900 then climbing right turn to 3500 direct EKAKE and hold.

**❄** -19°C

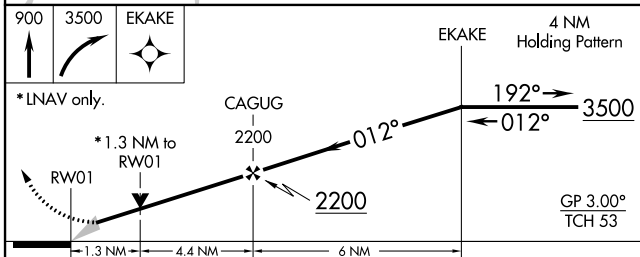
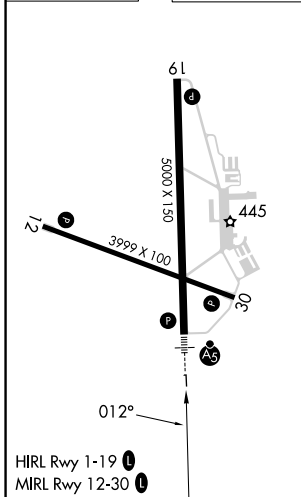
ASOS <b>119.925</b>	ALBANY APP CON <b>132.825 307.2</b>	UNICOM <b>123.0 (CTAF) 0</b>
------------------------	--	---------------------------------



NE-2, 22 FEB 2024 to 21 MAR 2024

NE-2, 22 FEB 2024 to 21 MAR 2024

ELEV 328	<b>D</b>	TDZE 324
----------	----------	----------



CATEGORY	A	B	C	D
LPV DA		524-½	200 (200-½)	
LNAV/VNAV DA		835-1¼	511 (600-1¼)	
LNAV MDA	800-½	476 (500-½)	800-1	476 (500-1)
<b>C</b> CIRCLING	840-1 512 (600-1)	860-1 532 (600-1)	940-1¾ 612 (700-1¾)	1960-3 1632 (1700-3)

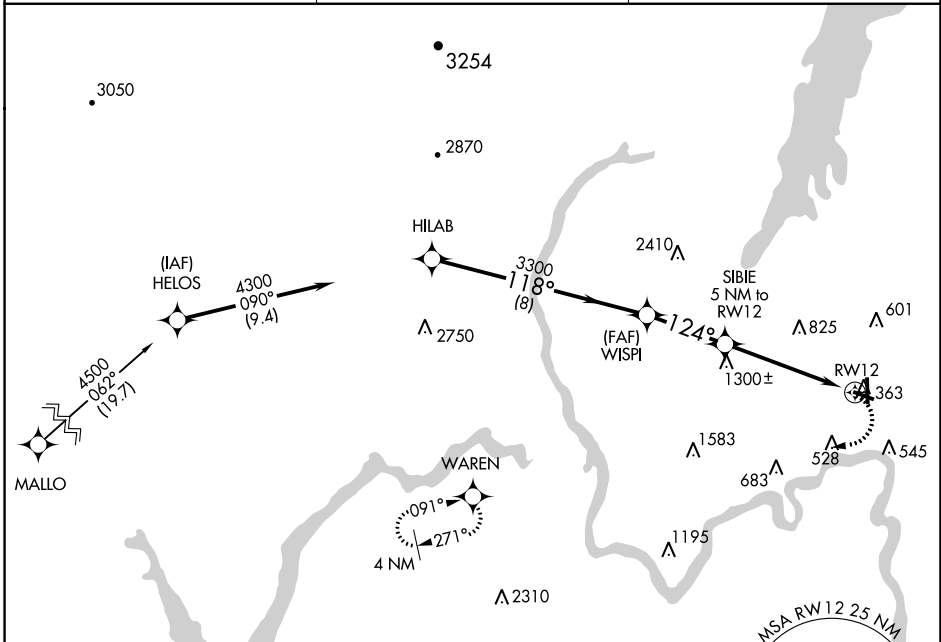
APP CRS	Rwy Idg	<b>3999</b>
<b>124°</b>	TDZE	<b>328</b>
	Apt Elev	<b>328</b>

# RNAV (GPS) RWY 12

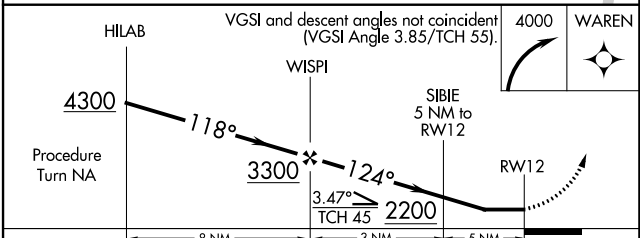
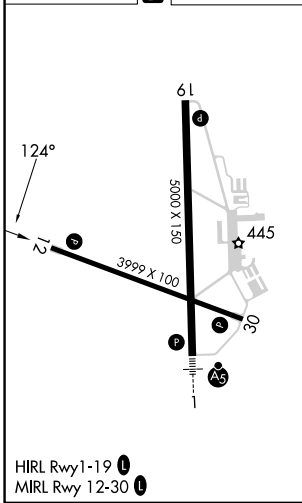
FLOYD BENNETT MEML (GFL)

NA -19°C	DME/DME RNP-0.3 NA. Helicopter visibility reduction below 1 SM NA. Night landing: Rwy 12, 30 NA.	MISSED APPROACH: Climbing right turn to 4000 direct to WAREN WP and hold.
-------------	--	---

ASOS <b>119.925</b>	ALBANY APP CON <b>132.825 307.2</b>	UNICOM <b>123.0 (CTAF) 0</b>
------------------------	--	---------------------------------



ELEV 328	<b>D</b>	TDZE 328
----------	----------	----------



CATEGORY	A	B	C	D
LNAV MDA	1560-1¼ 1232 (1300-1¼)	1560-1½ 1232 (1300-1½)	1560-3	1232 (1300-3)
CIRCLING	1560-1¼ 1232 (1300-1¼)	1560-1½ 1232 (1300-1½)	1560-3	1232 (1300-3)

NE-2, 22 FEB 2024 to 21 MAR 2024

NE-2, 22 FEB 2024 to 21 MAR 2024

APP CRS	Rwy Idg	<b>5000</b>
<b>177°</b>	TDZE	<b>327</b>
	Apt Elev	<b>328</b>

# RNAV (GPS) RWY 19

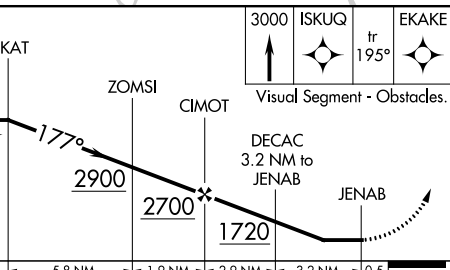
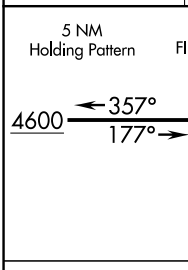
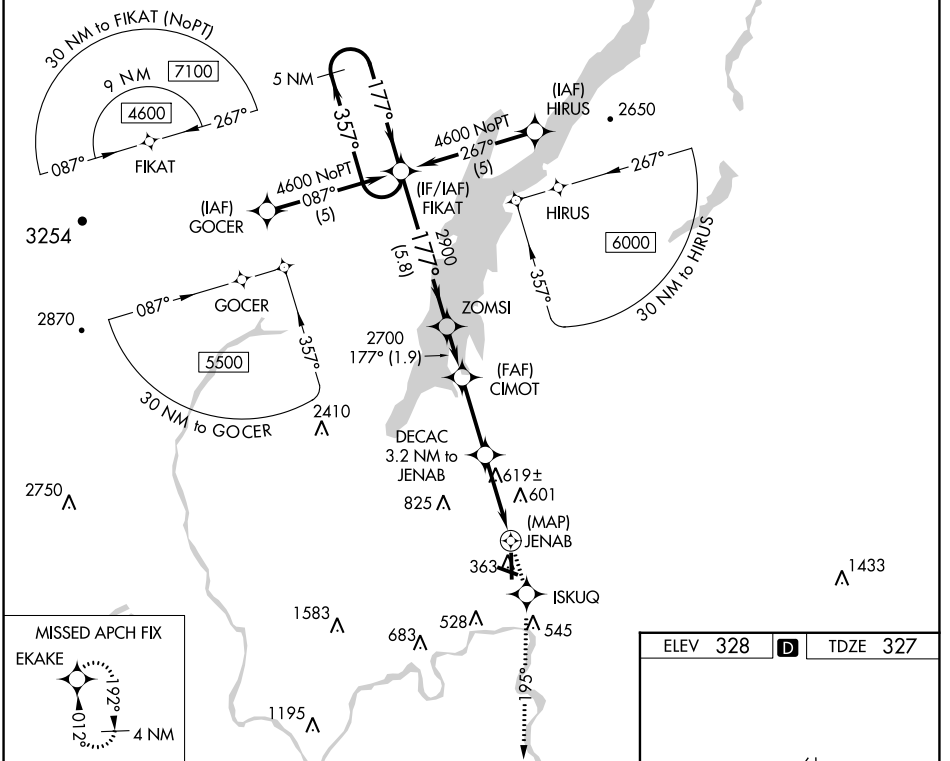
FLOYD BENNETT MEML (GFL)

RNP APCH.

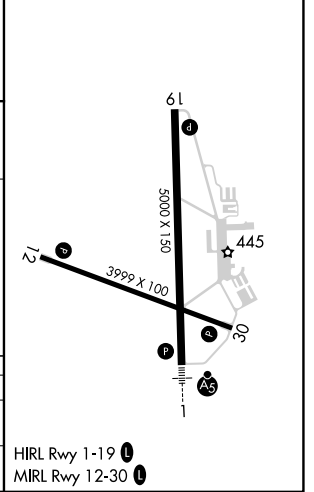
**⚠** Circling NA for Cat D NW of Rwy 12 and 19. Rwy 19 helicopter visibility reduction below ¾ SM NA. Circling Rwy 12, 30 NA at night.

**⚠** MISSED APPROACH: Climb to 3000 direct ISKUG and on track 195° to EKAKE and hold.

ASOS <b>119.925</b>	ALBANY APP CON <b>132.825 307.2</b>	UNICOM <b>123.0 (CTAF) 0</b>
------------------------	--	---------------------------------



ELEV 328	<b>D</b>	TDZE 327
----------	----------	----------



CATEGORY	A	B	C	D
LNVA MDA	880-1	553 (600-1)	880-1½ 553 (600-1½)	880-1¾ 553 (600-1¾)
<b>C</b> CIRCLING	880-1	552 (600-1)	940-1¾ 612 (700-1¾)	1420-3 1092 (1100-3)

NE-2, 22 FEB 2024 to 21 MAR 2024

NE-2, 22 FEB 2024 to 21 MAR 2024

APP CRS	Rwy Idg	<b>3999</b>
<b>305°</b>	TDZE	<b>325</b>
	Apt Elev	<b>328</b>

# RNAV (GPS) RWY 30

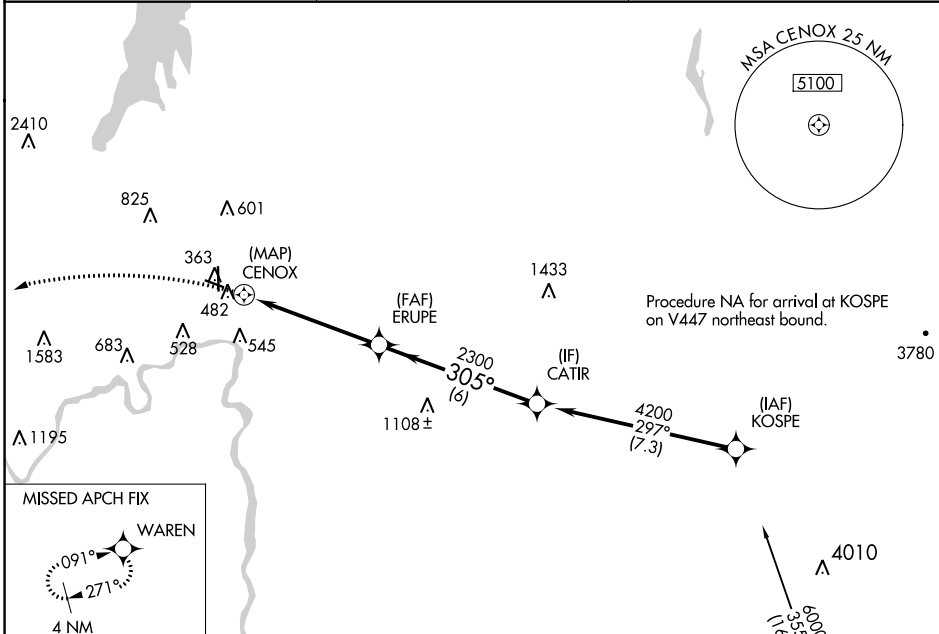
FLOYD BENNETT MEML (GFL)

RNP APCH.

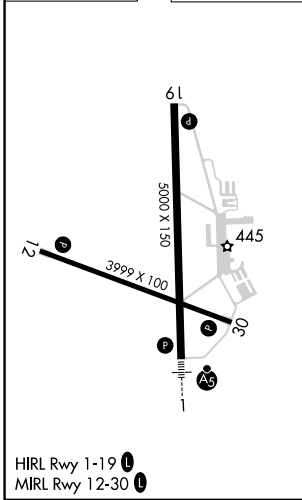
- Circling Rwy 12 NA at night.
- Rwy 30 helicopter visibility reduction below 3/4 SM NA.
- 19°C

MISSED APPROACH: Climbing left turn to 4000 direct WAREN and hold.

ASOS <b>119.925</b>	ALBANY APP CON <b>132.825 307.2</b>	UNICOM <b>123.0 (CTAF)</b>
------------------------	--	-------------------------------

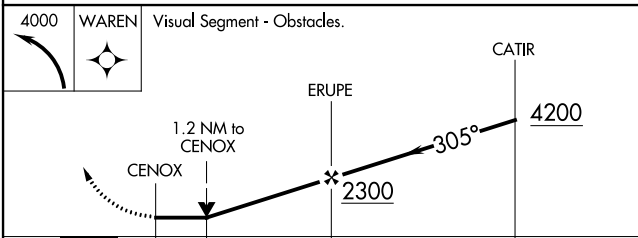


ELEV 328	<b>D</b>	TDZE 325
----------	----------	----------



Procedure NA for arrival at KOSPE on V447 northeast bound.

Procedure NA for arrival at DORIS on V490 eastbound.



CATEGORY	A	B	C	D
LNAV MDA	1020-1	695 (700-1)	1020-2 695 (700-2)	1020-2 1/4 695 (700-2 1/4)
<b>C</b> CIRCLING	1020-1	692 (700-1)	1020-2 692 (700-2)	1960-3 1632 (1700-3)

NE-2, 22 FEB 2024 to 21 MAR 2024

NE-2, 22 FEB 2024 to 21 MAR 2024