

WAAS CH <b>86502</b> <b>W11A</b>	APP CRS <b>107°</b>	Rwy Idg TDZE <b>145</b> Apt Elev <b>145</b>	<b>4001</b>
--	------------------------	---	-------------

# RNAV (GPS) RWY 11

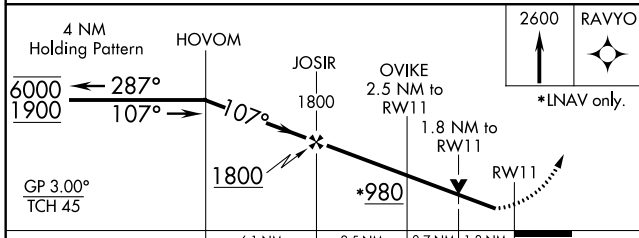
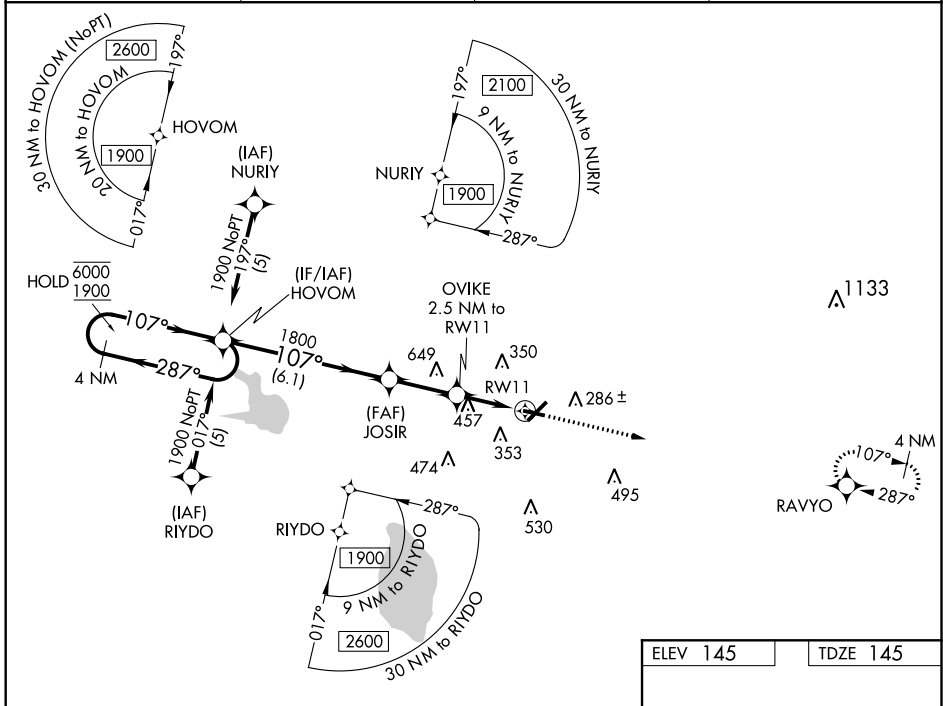
WINTER HAVEN RGNL (GIF)

**RNP APCH.**

▼ For uncompensated Baro-VNAV systems, LNAV/VNAV NA below -15°C or above 54°C. Straight-In minimums NA at night. When local altimeter setting not received, use Barlow altimeter setting and increase all DA/MDAs 20 feet. Baro-VNAV NA when using Barlow altimeter setting.

▲ MISSED APPROACH: Climb to 2600 direct RAVYO and hold.

ASOS <b>133.675</b>	TAMPA APP CON <b>120.65 290.3</b>	CLNC DEL (GCO) <b>121.725</b>	UNICOM <b>123.05 (CTAF) 0</b>
------------------------	--------------------------------------	----------------------------------	----------------------------------



CATEGORY	A	B	C	D
LPV DA	395-1 250 (300-1)			
LNAV/VNAV DA	647-1¾ 502 (600-1¾)			
LNAV MDA	760-1	615 (700-1)	760-1¾ 615 (700-1¾)	760-2 615 (700-2)
CIRCLING	760-1¾ 615 (700-1¾)		820-2¼ 675 (700-2¼)	

ELEV 145	TDZE 145
----------	----------

REIL Rwy 5 and 23  
REIL Rwy 11 and 29  
MIRL Rwy 5-23 and 11-29

SE-3, 05 NOV 2020 to 03 DEC 2020

SE-3, 05 NOV 2020 to 03 DEC 2020

APP CRS	Rwy Idg	<b>5006</b>
<b>049°</b>	TDZE	<b>145</b>
	Apt Elev	<b>145</b>

# RNAV (GPS) RWY 5

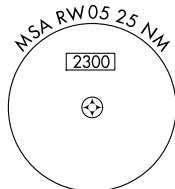
WINTER HAVEN RGNL (GIF')

RNP APCH.

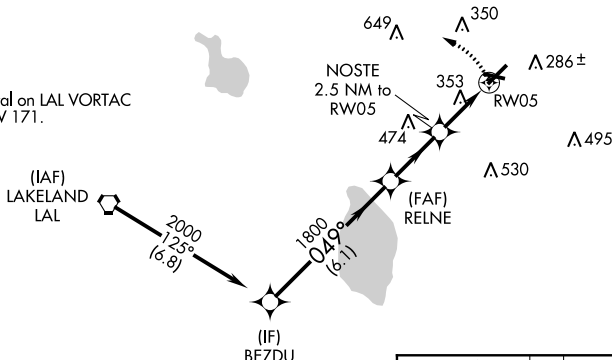
**▼** Helicopter visibility reduction below 3/4 SM NA. When local altimeter setting not received, use Bartow altimeter setting and increase all MDA 20 feet, increase LNAV Cat C/D visibility 1/8 SM. VDP NA when using Bartow altimeter setting.

MISSED APPROACH: Climbing left turn to 2000 direct PLUMY and hold.

ASOS <b>133.675</b>	TAMPA APP CON <b>120.65 290.3</b>	CLNC DEL (GCO) <b>121.725</b>	UNICOM <b>123.05 (CTAF) 0</b>
------------------------	--------------------------------------	----------------------------------	----------------------------------

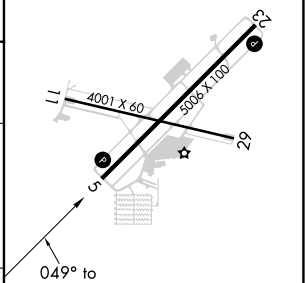
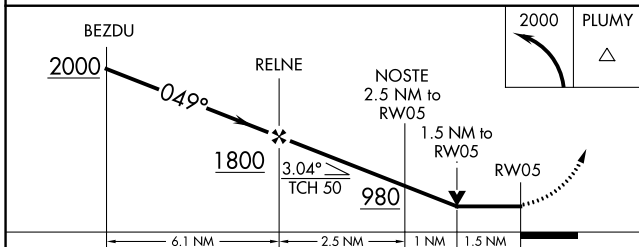


Procedure NA for arrival on LAL VORTAC airway radials 080 CW 171.



▲ 1549

ELEV 145	TDZE 145
----------	----------



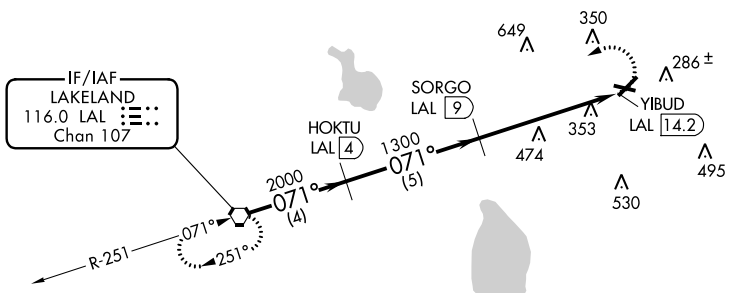
CATEGORY	A	B	C	D
LNAV MDA	660-1	515 (600-1)	660-1 3/8	515 (600-1 3/8)
CIRCLING	720-1	575 (600-1)	720-1 1/2	820-2 1/4
			575 (600-1 1/2)	675 (700-2 1/4)

REIL Rwy 5 and 23  
REIL Rwy 11 and 29  
MRL Rwy 5-23 and 11-29

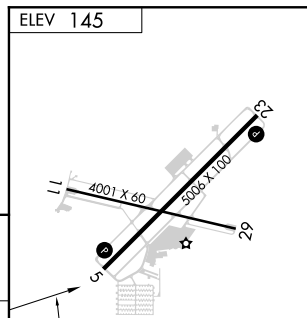
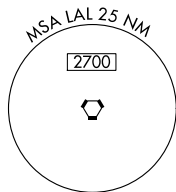
VORTAC LAL <b>116.0</b> Chan <b>107</b>	APP CRS <b>071°</b>	Rwy Idg TDZE Apt Elev	<b>N/A</b> <b>N/A</b> <b>145</b>
---	------------------------	-----------------------------	--

**VOR-A**  
WINTER HAVEN RGNL (GIF')

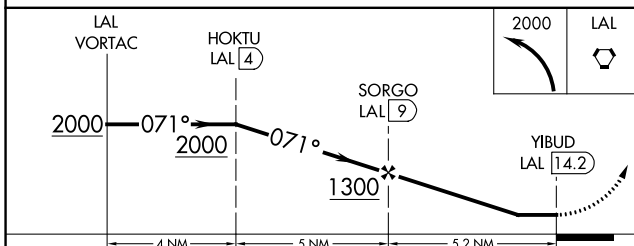
DME required.		MISSED APPROACH: Climbing left turn to 2000 direct LAL VORTAC and hold.	
<p>▼ When local altimeter setting not received, use Bartow altimeter setting and increase all MDA 20 feet.</p> <p>▲</p>		ASOS <b>133.675</b>	TAMPA APP CON <b>120.65 290.3</b>
		CLNC DEL (GCO) <b>121.725</b>	UNICOM <b>123.05 (CTAF) 0</b>



Procedure NA for arrivals on LAL VORTAC airway radials 046 CW 139.



▲ 1667



071° 5.2 NM from FAF

CATEGORY	A	B	C	D
CIRCLING	780-1	635 (700-1)	780-1¼ 635 (700-1¼)	820-2¼ 675 (700-2¼)

REIL Rwy 5 and 23  
REIL Rwy 11 and 29  
MRL Rwy 5-23 and 11-29

SE-3, 05 NOV 2020 to 03 DEC 2020

SE-3, 05 NOV 2020 to 03 DEC 2020