

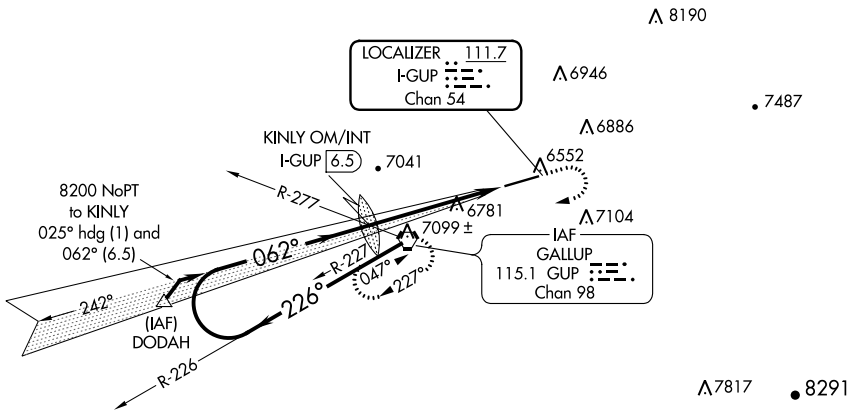
LOC/DME I-GUP <b>111.7</b> Chan <b>54</b>	APP CRS <b>062°</b>	Rwy Idg TDZE Apt Elev <b>7315</b> <b>6465</b> <b>6472</b>
---	------------------------	--

# LOC RWY 6

GALLUP MUNI (GUP)

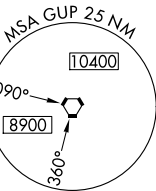
**NA** Rwy 6 helicopter visibility reduction below 3/4 SM NA. MISSED APPROACH: Climb to 7500 then climbing right turn to 9000 direct GUP VORTAC and hold.

ASOS <b>118.375</b>	ALBUQUERQUE CENTER <b>124.325 288.25</b>	UNICOM <b>122.95 (CTAF)</b>
------------------------	---	--------------------------------

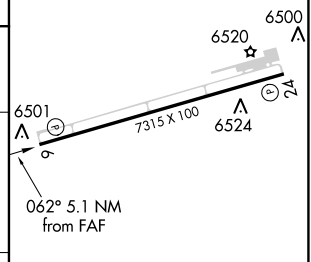
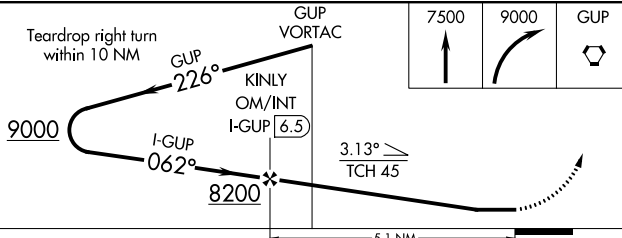


SW-1, 22 FEB 2024 to 21 MAR 2024

SW-1, 22 FEB 2024 to 21 MAR 2024



ELEV 6472	TDZE 6465
-----------	-----------



CATEGORY	A	B	C	D
S-6	7280-1 815 (900-1)	7280-1¼ 815 (900-1¼)	7280-2½	815 (900-2½)
CIRCLING	7280-1 808 (900-1)	7280-1¼ 808 (900-1¼)	7460-3 988 (1000-3)	7720-3 1248 (1300-3)

REIL Rwy 24	MRL Rwy 6-24
FAF to MAP 5.1 NM	
Knots	60 90 120 150 180
Min:Sec	5:06 3:24 2:33 2:02 1:42

APP CRS **242°**  
 Rwy Idg **7315**  
 TDZE **6472**  
 Apt Elev **6472**

# RNAV (GPS) RWY 24

GALLUP MUNI (GUP)

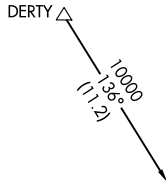
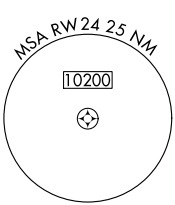
RNP APCH.  
 Rwy 24 helicopter visibility reduction below 3/4 SM NA.

MISSED APPROACH: Climbing right turn to 9500 direct BAXTU and hold.

ASOS  
**118.375**

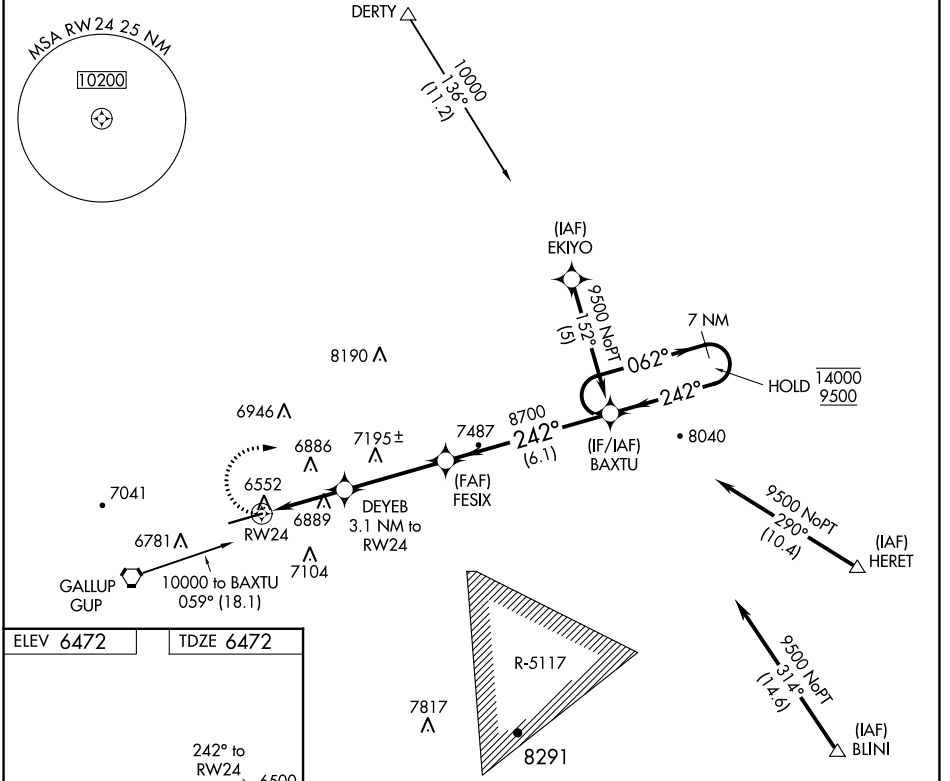
ALBUQUERQUE CENTER  
**124.325 288.25**

UNICOM  
**122.95 (CTAF) 0**

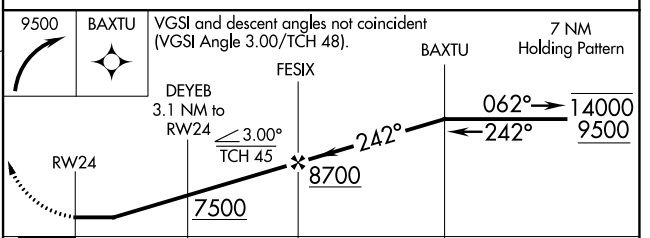


SW-1, 22 FEB 2024 to 21 MAR 2024

SW-1, 22 FEB 2024 to 21 MAR 2024



ELEV 6472 TDZE 6472



CATEGORY	A	B	C	D
RNAV MDA	7360-1¼ 888 (900-1¼)	7360-2½ 888 (900-2½)	7360-2½ 888 (900-2½)	7360-2½ 888 (900-2½)
CIRCLING	7360-1¼ 888 (900-1¼)	7460-3 988 (1000-3)	7720-3 1248 (1300-3)	7720-3 1248 (1300-3)

REIL Rwy 24 0  
 MIRL Rwy 6-24 0  
 GALLUP, NEW MEXICO  
 Orig-B 25MAR21

35°31'N-108°47'W

# RNAV (GPS) RWY 24

GALLUP MUNI (GUP)

APP CRS <b>062°</b>	Rwy Idg <b>7315</b>
	TDZE <b>6465</b>
	Apt Elev <b>6472</b>

# RNAV (GPS) RWY 6

GALLUP MUNI (GUP)

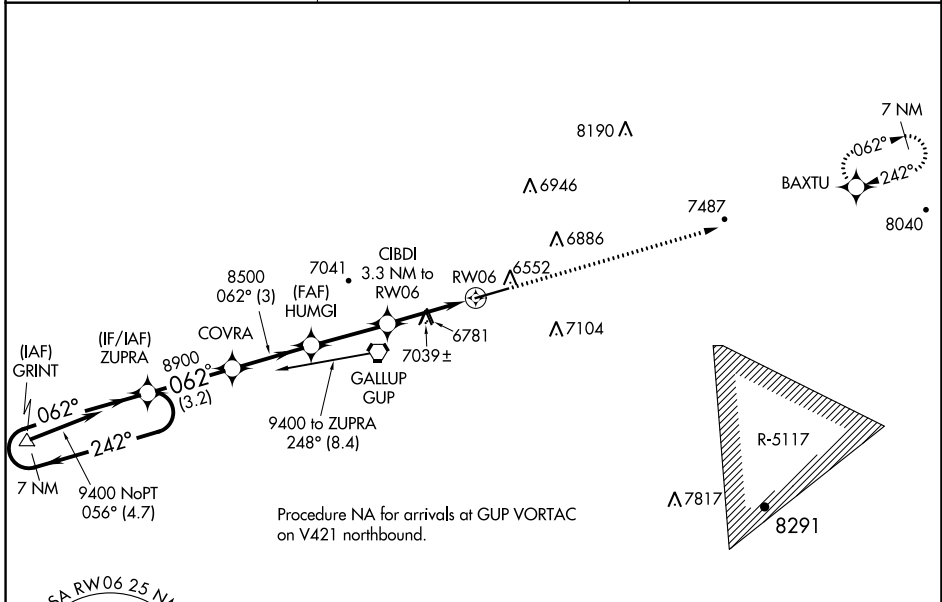
**⚠** DME/DME RNP 0.3 NA. Visibility reduction by helicopters NA.  
 When local altimeter setting not received, use Window Rock altimeter setting and increase all MDAs 80 feet, increase LNAV Cat A visibility 1/4 SM.  
 VDP NA with Window Rock altimeter setting.

MISSED APPROACH: Climb to 9500 direct BAXTU and hold.

ASOS <b>118.375</b>
------------------------

ALBUQUERQUE CENTER <b>124.325 288.25</b>
---

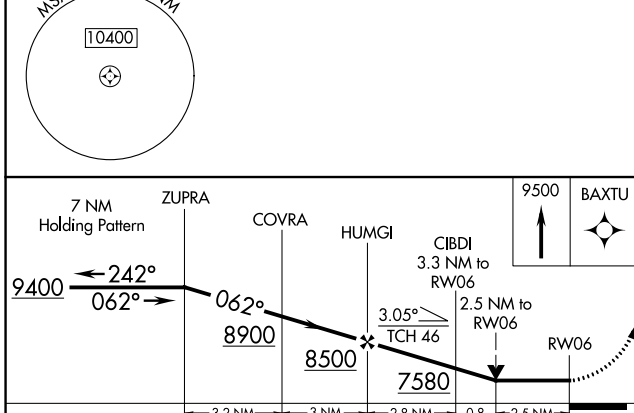
UNICOM <b>122.95 (CTAF) 0</b>
----------------------------------



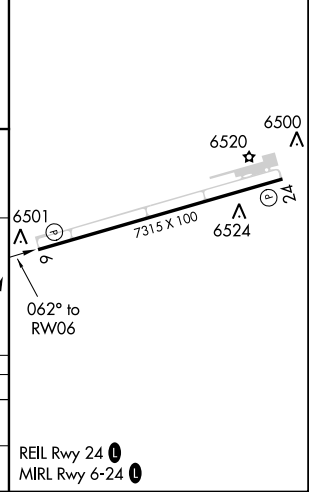
Procedure NA for arrivals at GUP VORTAC on V421 northbound.

SW-1, 22 FEB 2024 to 21 MAR 2024

SW-1, 22 FEB 2024 to 21 MAR 2024



ELEV 6472	TDZE 6465
-----------	-----------



CATEGORY	A	B	C	D
LNAV MDA	7300-1 835 (900-1)	7300-1 1/4 835 (900-1 1/4)	7300-2 1/2	835 (900-2 1/2)
CIRCLING	7300-1 1/4	828 (900-1 1/4)	7460-3 988 (1000-3)	7720-3 1248 (1300-3)

REIL Rwy 24 0  
MIRL Rwy 6-24 0

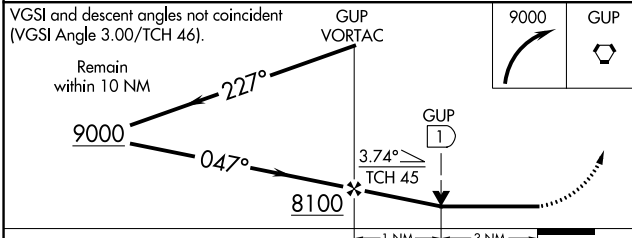
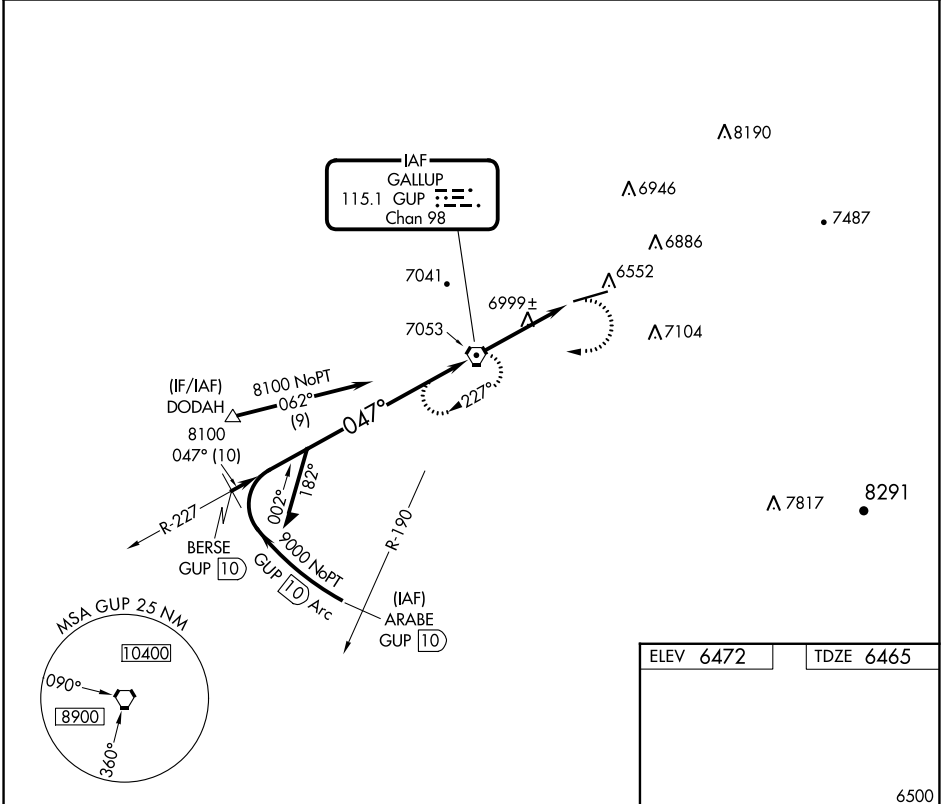
VORTAC GUP <b>115.1</b> Chan <b>98</b>	APP CRS <b>047°</b>	Rwy Idg <b>7315</b> TDZE <b>6465</b> Apt Elev <b>6472</b>
--	------------------------	---

# VOR RWY 6

GALLUP MUNI (GUP)

**⚠** Rwy 6 helicopter visibility reduction below 3/4 SM NA. **MISSED APPROACH:** Climbing right turn to 9000 direct GUP VORTAC and hold.

ASOS <b>118.375</b>	ALBUQUERQUE CENTER <b>124.325 288.25</b>	UNICOM <b>122.95 (CTAF) 0</b>
------------------------	---	----------------------------------



ELEV 6472	TDZE 6465
-----------	-----------

REIL Rwy 24  
MRL Rwy 6-24  
FAF to MAP 4 NM

Knots	60	90	120	150	180
Min:Sec	4:00	2:40	2:00	1:36	1:20

CATEGORY	A	B	C	D
S-6	7460-1¼ 995 (1000-1¼)	7460-1½ 995 (1000-1½)	7460-3 995 (1000-3)	NA
CIRCLING	7460-1¼ 988 (1000-1¼)	7460-1½ 988 (1000-1½)	7460-3 988 (1000-3)	7720-3 1248 (1300-3)

SW-1, 22 FEB 2024 to 21 MAR 2024

SW-1, 22 FEB 2024 to 21 MAR 2024