

LOC/DME I-GVT 110.5 Chan 42	APP CRS 176°	Rwy Idg 8030 TDZE 534 Apt Elev 535
---	------------------------	---

ILS Y or LOC Y RWY 17

MAJORS (GVT)

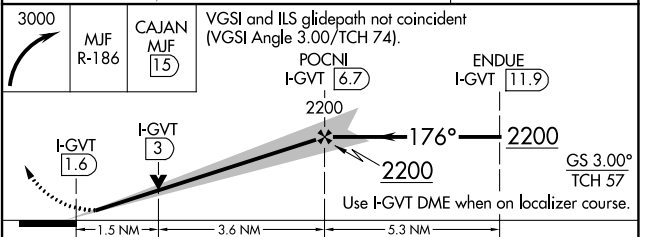
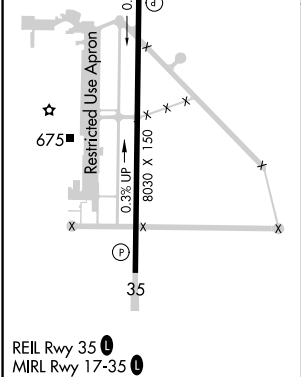
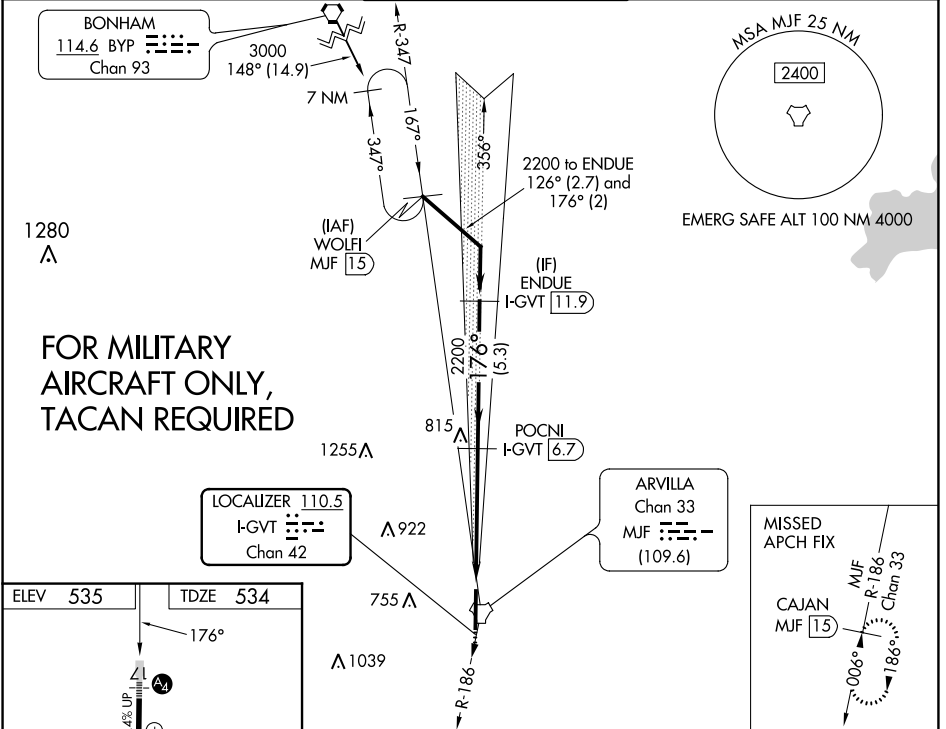
DME required.

⚠ Inop table does not apply to S-ILS 17 all Cats and S-LOC 17 Cats A/B. For inop ALS, increase S-LOC 17 Cat E visibility to 1½ SM. Autopilot coupled approach NA below 900 feet.

MALS

MISSED APPROACH: Climbing right turn to 3000 on MUF TACAN R-186 to CAJAN/MUF TACAN 15 DME and hold.

AWOS-3 133.425	FORT WORTH CENTER 132.025 360.75	MAJORS TOWER★ 118.65 (CTAF) 0 385.425	GND CON 121.7 335.8	UNICOM 122.95
--------------------------	--	---	-------------------------------	-------------------------



CATEGORY	A	B	C	D	E
S-ILS 17	734-1		200 (200-1)		
S-LOC 17	1060-1	526 (600-1)	1060-1¼ 526 (600-1¼)		
C CIRCLING	1060-1	525 (600-1)	1060-1½ 525 (600-1½)	1240-2¼ 705 (800-2¼)	1300-2¾ 765 (800-2¾)

SC-2, 22 FEB 2024 to 21 MAR 2024

SC-2, 22 FEB 2024 to 21 MAR 2024

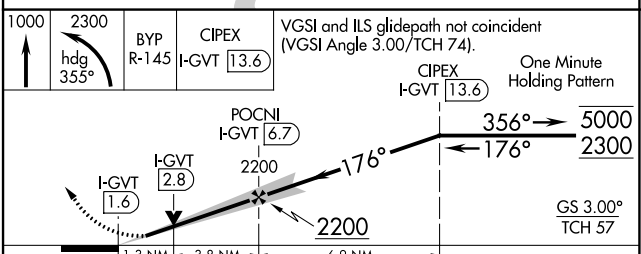
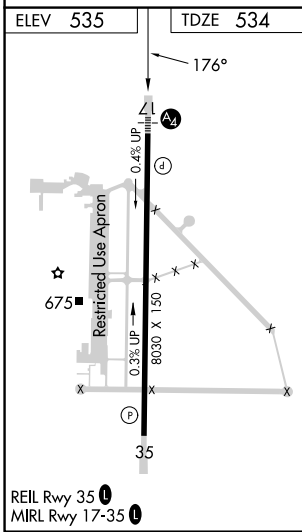
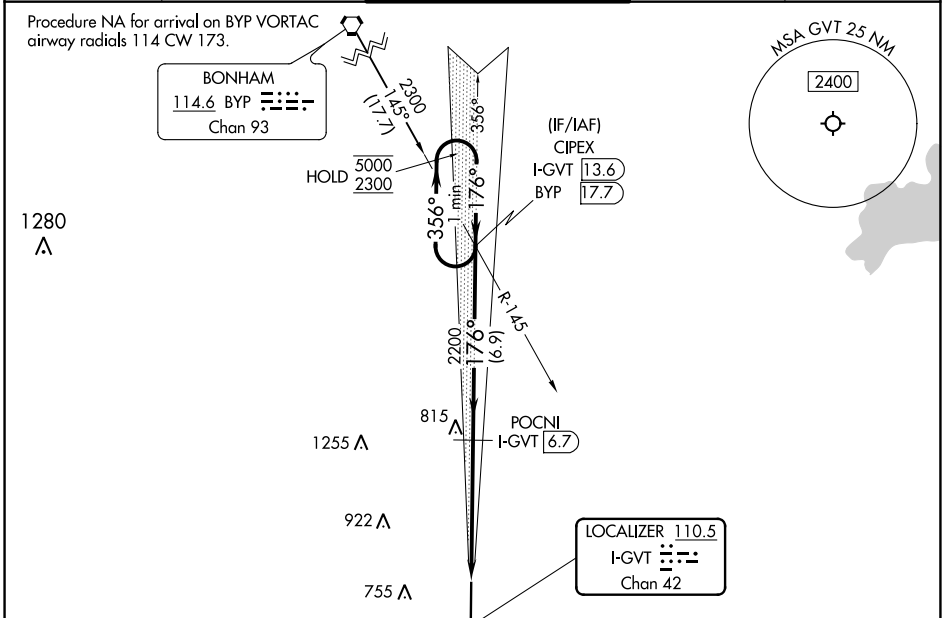
LOC/DME I-GVT 110.5 Chan 42	APP CRS 176°	Rwy Idg 8030 TDZE 534 Apt Elev 535
---	------------------------	---

ILS Z or LOC Z RWY 17

MAJORS (GVT)

DME required.	MALS	MISSED APPROACH: Climb to 1000 then climbing left turn to 2300 on heading 355° and BYP VORTAC R-145 to CIPEX/I-GVT 13.6 DME and hold.
<p>▼ Inop table does not apply to S-ILS 17 all Cats and S-LOC 17 Cats A/B.</p> <p>▲ For inop ALS, increase S-LOC 17 Cat E visibility to 1 3/8 SM. Autopilot coupled approach NA below 900 feet.</p>		

AWOS-3 133.425	FORT WORTH CENTER 132.025 360.75	MAJORS TOWER ★ 118.65 (CTAF) 0 385.425	GND CON 121.7 335.8	UNICOM 122.95
--------------------------	--	--	-------------------------------	-------------------------



CATEGORY	A	B	C	D	E
S-ILS 17	734-1		200 (200-1)		
S-LOC 17	1000-1	466 (500-1)	1000-1 1/8		466 (500-1 1/8)
C CIRCLING	1000-1 465 (500-1)	1060-1 525 (600-1)	1060-1 1/2 525 (600-1 1/2)	1240-2 1/4 705 (800-2 1/4)	1300-2 3/4 765 (800-2 3/4)

SC-2, 22 FEB 2024 to 21 MAR 2024

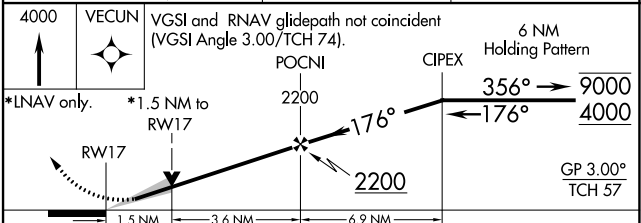
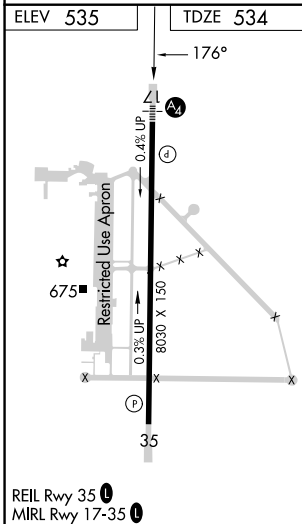
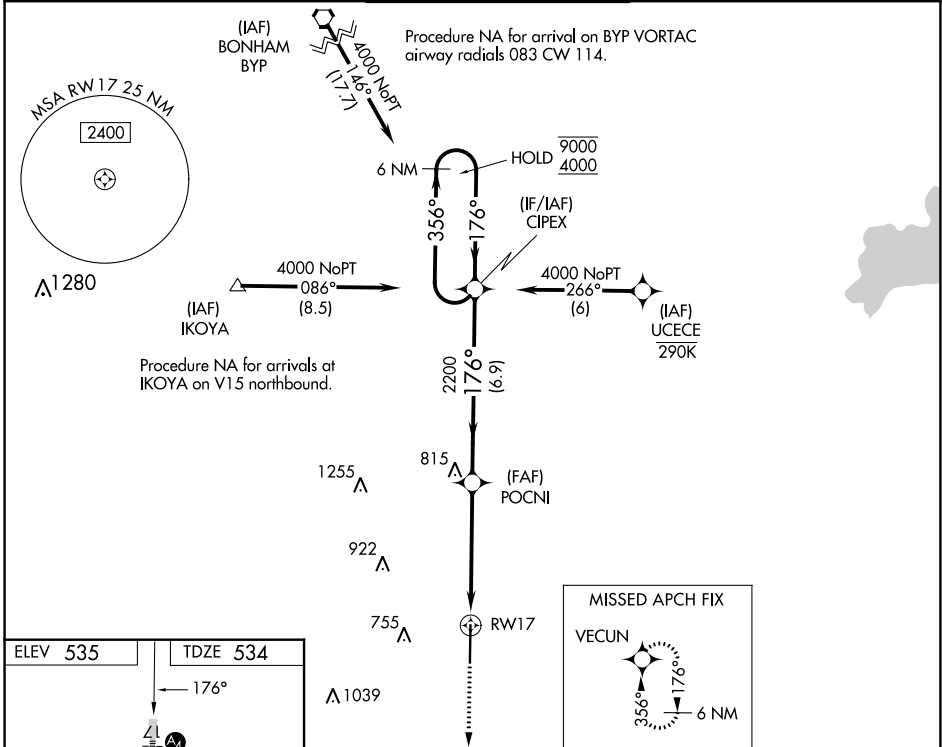
SC-2, 22 FEB 2024 to 21 MAR 2024

WAAS CH 86205 W17A	APP CRS 176°	Rwy Idg TDZE 534 Apt Elev 535
---------------------------------	------------------------	---

RNAV (GPS) RWY 17

MAJORS (GVT)

RNP APCH.		MALS	MISSED APPROACH: Climb to 4000 direct VECUN and hold, continue climb-in hold to 4000.		
<p>▼ Inop table does not apply to LPV and LNAV/VNAV all Cats and LNAV Cats A and B. For uncompensated Baro-VNAV systems, LNAV/VNAV NA below -16°C or above 54°C. For inop ALS, increase LNAV Cat E visibility to 1½ SM.</p>					
AWOS-3 133.425	FORT WORTH CENTER 132.025 360.75	MAJORS TOWER ★ 118.65 (CTAF) 0 385.425	GND CON 121.7 335.8	UNICOM 122.95	



VEVCUN	POCNI	CIPEX			
4000	2200	2200			
*LNAV only.	*1.5 NM to RWY17	1.5 NM	3.6 NM	6.9 NM	
CATEGORY	A	B	C	D	E
LPV DA	734-1		200 (200-1)		
LNAV/VNAV DA	832-1		298 (300-1)		
LNAV MDA	1060-1	526 (600-1)	1060-1¼	526 (600-1¼)	
CIRCLING	1060-1	525 (600-1)	1060-1½	1240-2¼	1300-2¾
			525 (600-1½)	705 (800-2¼)	765 (800-2¾)

SC-2, 22 FEB 2024 to 21 MAR 2024

SC-2, 22 FEB 2024 to 21 MAR 2024

APP CRS	Rwy Idg	8030
356°	TDZE	532
	Apt Elev	535

RNAV (GPS) RWY 35

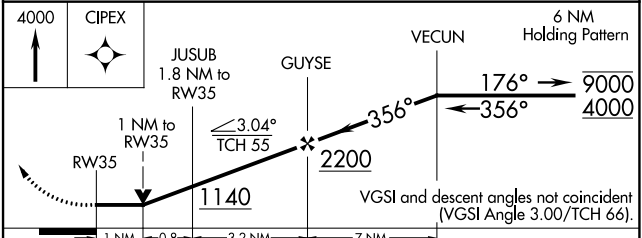
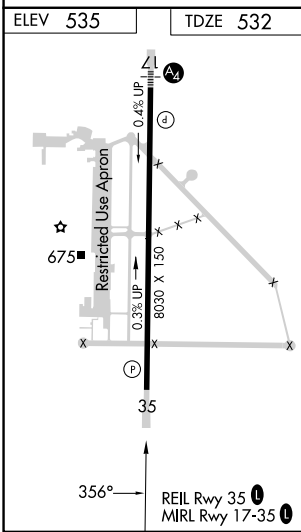
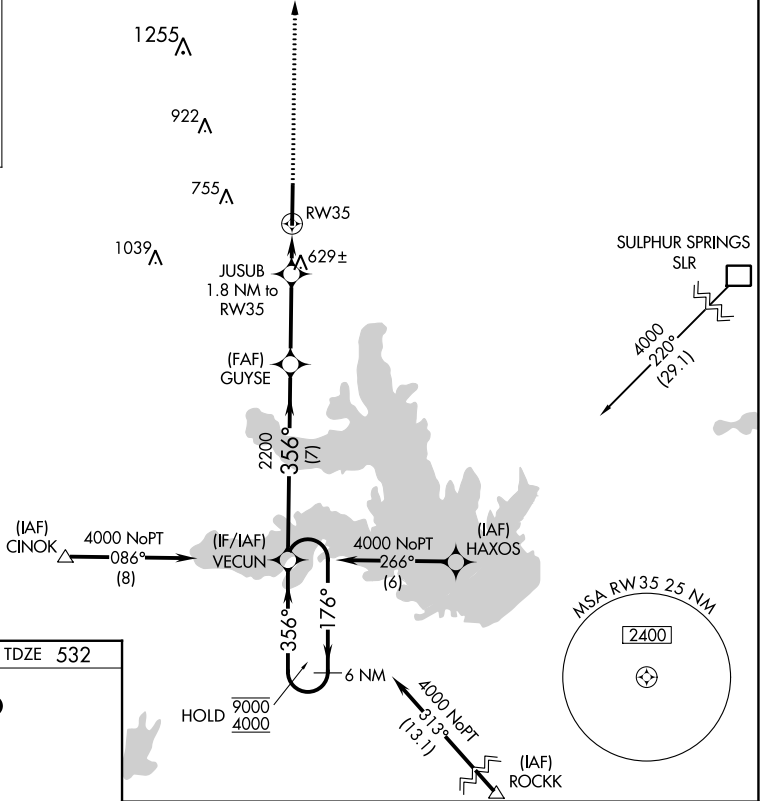
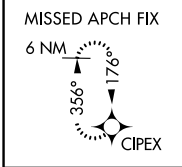
MAJORS (GVT)

RNP APCH - GPS.

⚠ Rwy 35 helicopter visibility reduction below 3/4 SM NA.

MISSED APPROACH: Climb to 4000 direct CIPEX and hold, continue climb-in-hold to 4000.

AWOS-3 133.425	FORT WORTH CENTER 132.025 360.75	MAJORS TOWER ★ 118.65 (CTAF) 0 385.425	GND CON 121.7 335.8	UNICOM 122.95
--------------------------	--	--	-------------------------------	-------------------------



CATEGORY	A	B	C	D	E
LNAV MDA	900-1 368 (400-1)				
CIRCLING	1040-1 505 (600-1)	1060-1 525 (600-1)	1060-1½ 525 (600-1½)	1240-2¼ 705 (800-2¼)	1300-2¾ 765 (800-2¾)

SC-2, 22 FEB 2024 to 21 MAR 2024

SC-2, 22 FEB 2024 to 21 MAR 2024

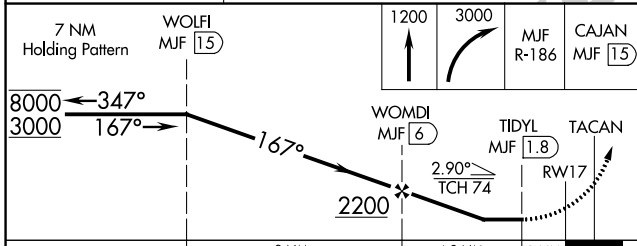
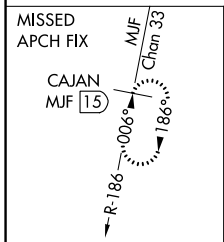
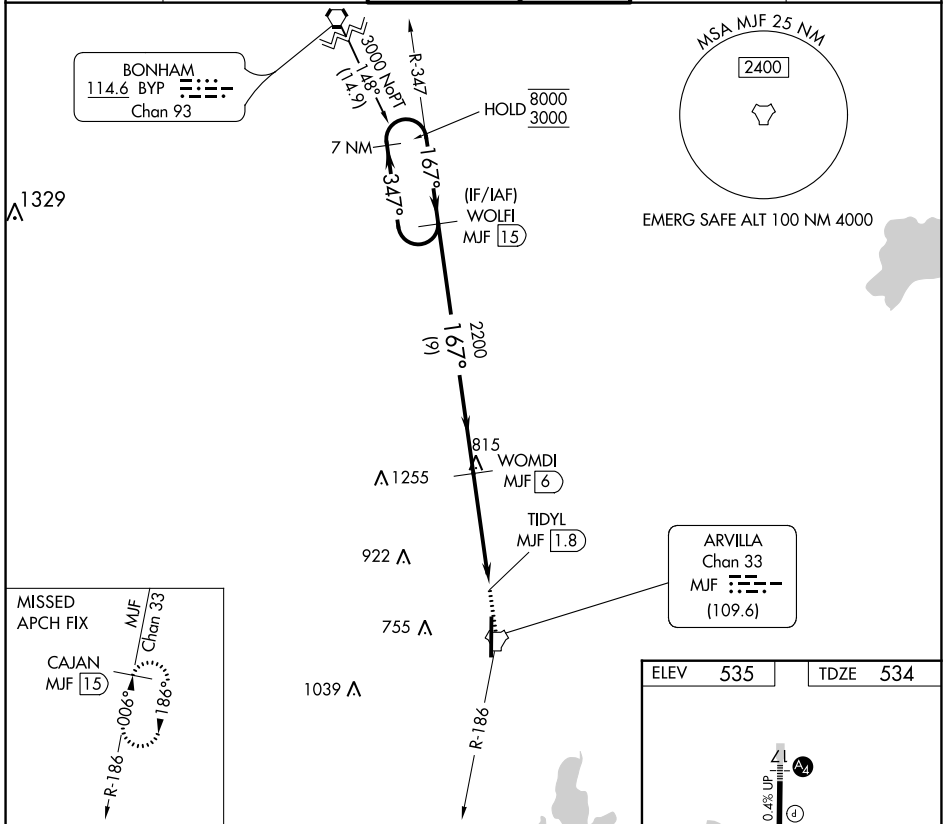
TACAN MJF Chan 33 (109.6)	APP CRS 167°	Rwy Idg TDZE 534 Apt Elev 535
---	------------------------	---

TACAN RWY 17

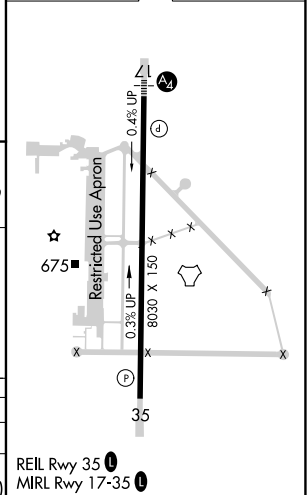
MAJORS (GVT)

<p>▽ ▲</p> <p>For inop ALS, increase S-17 Cat E visibility to 1½ SM.</p>	<p>MALS</p>	<p>MISSED APPROACH: Climb to 1200 then climbing right turn to 3000 on MJF TACAN R-186 to CAJAN/MJF 15 DME and hold.</p>
--	-------------	---

AWOS-3 133.425	FORT WORTH CENTER 132.025 360.75	MAJORS TOWER ★ 118.65 (CTAF) 0 385.425	GND CON 121.7 335.8	UNICOM 122.95
--------------------------	--	--	-------------------------------	-------------------------



ELEV	535	TDZE	534
------	-----	------	-----



CATEGORY	A	B	C	D	E
S-TACAN 17	1060-1	526 (600-1)	1060-1¼ 526 (600-1¼)		
CIRCLING	1060-1¼	525 (600-1¼)	1060-1½ 525 (600-1½)	1240-2¼ 705 (800-2¼)	1300-2¾ 765 (800-2¾)

REIL Rwy 35
MRL Rwy 17-35

SC-2, 22 FEB 2024 to 21 MAR 2024

SC-2, 22 FEB 2024 to 21 MAR 2024

TACAN MJF Chan 33 (109.6)	APP CRS 006°	Rwy Idg TDZE Apt Elev	8030 532 535
---	------------------------	-----------------------------	---

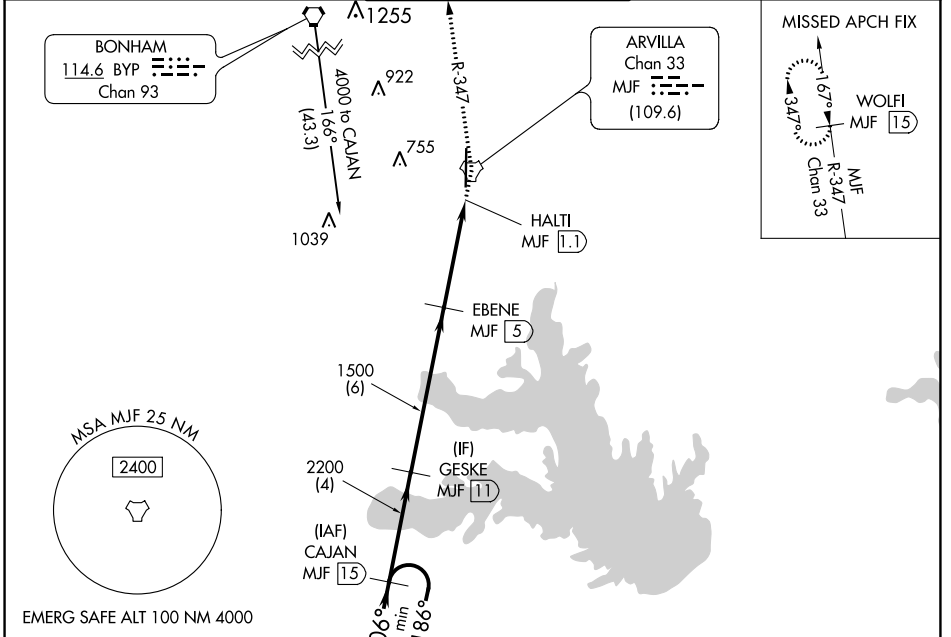
TACAN RWY 35

MAJORS (GVT)

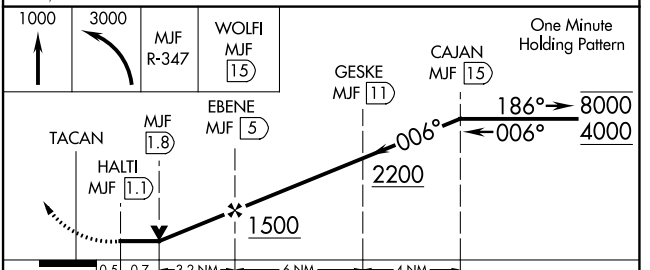
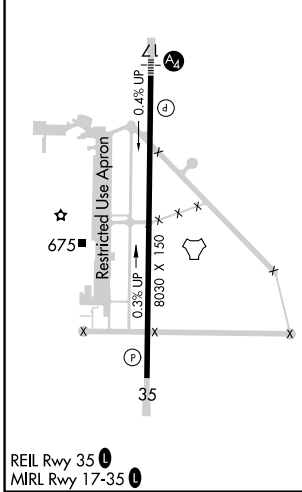
⚠ Rwy 35 helicopter visibility reduction below 3/4 SM NA.

MISSED APPROACH: Climb to 1000 then climbing left turn to 3000 on MJF TACAN R-347 to WOLFI/MJF 15 DME and hold.

AWOS-3 133.425	FORT WORTH CENTER 132.025 360.75	MAJORS TOWER ★ 118.65 (CTAF) 385.425	GND CON 121.7 335.8	UNICOM 122.95
--------------------------	--	--	-------------------------------	-------------------------



ELEV 535	TDZE 532
----------	----------



CATEGORY	A	B	C	D	E
S-35	980-1	448 (500-1)	980-1 3/8	448 (500-1 3/8)	
C CIRCLING	1060-1	525 (600-1)	1060-1 1/2 525 (600-1 1/2)	1240-2 1/4 705 (800-2 1/4)	1300-2 3/4 765 (800-2 3/4)

SC-2, 22 FEB 2024 to 21 MAR 2024

SC-2, 22 FEB 2024 to 21 MAR 2024

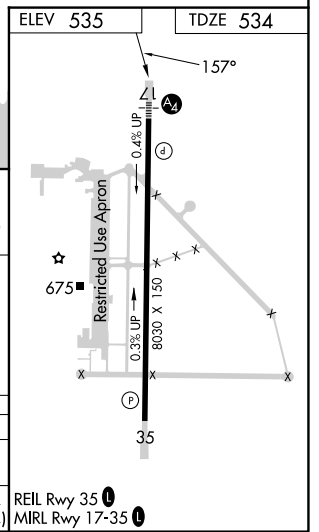
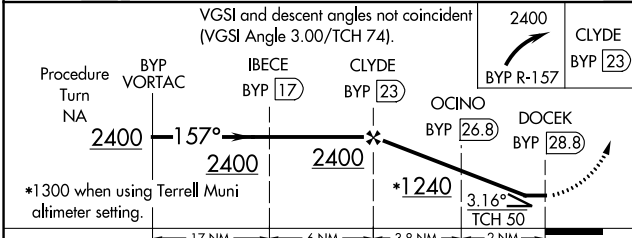
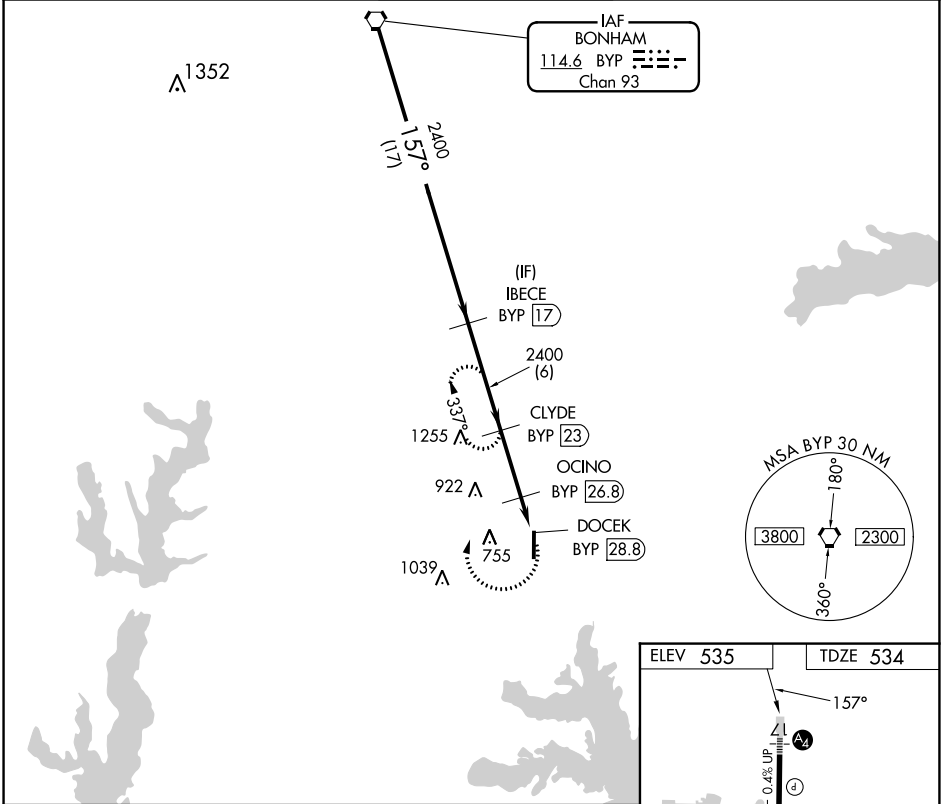
VORTAC BYP 114.6 Chan 93	APP CRS 157°	Rwy Idg 8030	TDZE 534
		Apt Elev 535	

VOR/DME RWY 17

MAJORS (GVT)

⚠ When local altimeter setting not received, use Terrell altimeter setting and increase all MDA 80 feet, increase Circling Cats C/D/E visibility by ½ SM. **⚠** MISSED APPROACH: Climbing right turn to 2400 via BYP R-157 to CLYDE /23 DME and hold.

AWOS-3 133.425	FORT WORTH CENTER 132.025 360.75	MAJORS TOWER ★ 118.65 (CTAF) 0 385.425	GND CON 121.7 335.8	UNICOM 122.95
--------------------------	--	--	-------------------------------	-------------------------



CATEGORY	A	B	C	D	E
S-17	1120-1 586 (600-1)	1120-1¼ 586 (600-1¼)	1120-1½ 586 (600-1½)	1120-2 586 (600-2)	
C CIRCLING	1120-1 585 (600-1)	1120-1¼ 585 (600-1¼)	1120-1½ 585 (600-1½)	1240-2¼ 705 (800-2¼)	1300-2¾ 765 (800-2¾)

SC-2, 22 FEB 2024 to 21 MAR 2024

SC-2, 22 FEB 2024 to 21 MAR 2024