

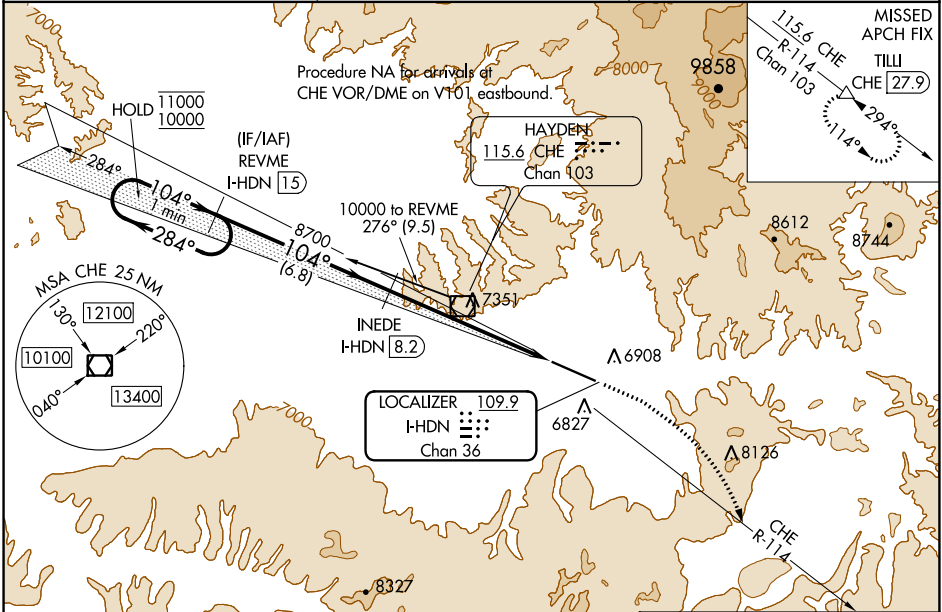
LOC/DME F-HDN 109.9 Chan 36	APP CRS 104°	Rwy Idg TDZE Apt Elev	9490 6591 6606
---	------------------------	-----------------------------	---

ILS or LOC RWY 10

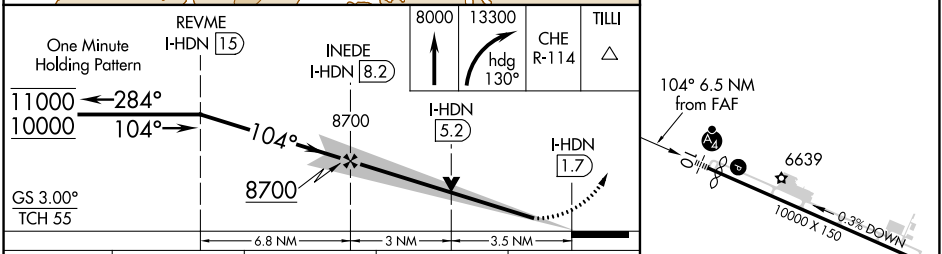
YAMPA VALLEY (HDN)

DME required.	MALSF	MISSED APPROACH: Climb to 8000 then climbing right turn to 13300 on heading 130° and on CHE VOR/DME R-114 to TILLI/CHE 27.9 DME and hold, continue climb-in-hold to 13300. * Missed approach requires minimum climb of 307 feet per NM to 8700.
<p>▼ NA</p> <p>Inop table does not apply to *S-ILS 10 all Cats and S-LOC Cats C/D. For inop ALS, increase S-ILS all Cats visibility to 2½ SM.</p>		

AWOS-3PT 119.275	DENVER CENTER 120.475 235.975	UNICOM 123.0 (CTAF) 1
----------------------------	---	--



ELEV 6606	TDZE 6591
-----------	-----------



CATEGORY	A	B	C	D
S-ILS 10*	6791-¾ 200 (200-¾)			
S-ILS 10	7414-2 823 (900-2)			
S-LOC 10	7760-1 1169 (1200-1)	7760-1½ 1169 (1200-1½)	7760-3 1169 (1200-3)	
CIRCLING	7760-1½ 1154 (1200-1½)	7760-1½ 1154 (1200-1½)	7760-3 1154 (1200-3)	8180-3 1574 (1600-3)

REIL Rwy 28 **1**
HIRL Rwy 10-28 **1**

SW-1, 22 FEB 2024 to 21 MAR 2024

SW-1, 22 FEB 2024 to 21 MAR 2024

WAAS CH 48825 W28A	APP CRS 303°	Rwy ldg TDZE Apt Elev	10000 6606 6606
--	------------------------	-----------------------------	--

RNAV (GPS) RWY 28

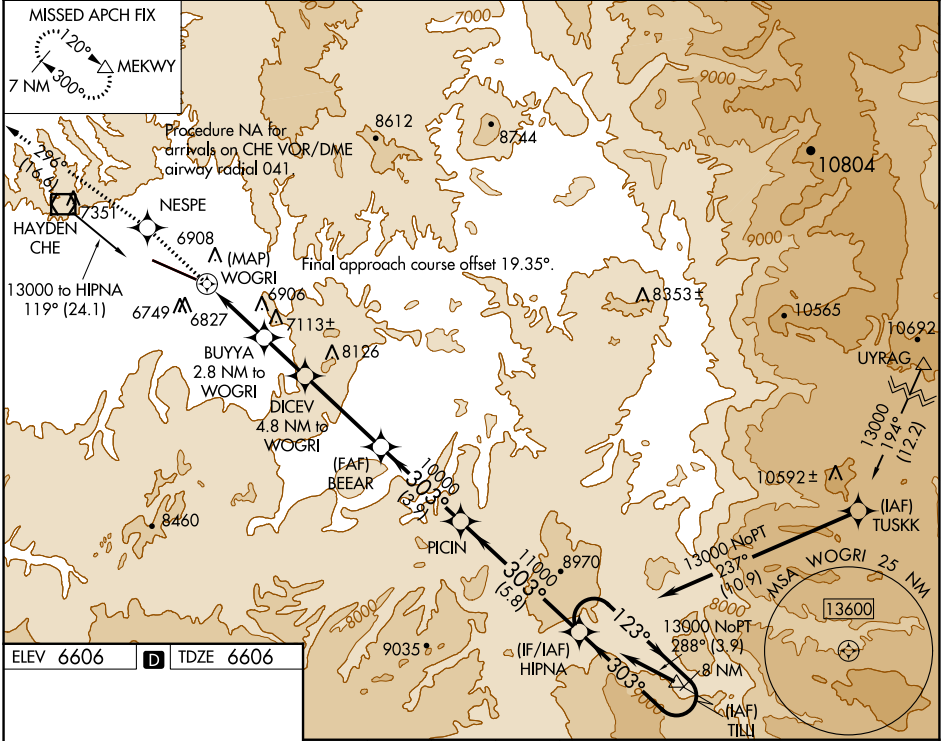
YAMPA VALLEY (HDN)

RNP APCH.

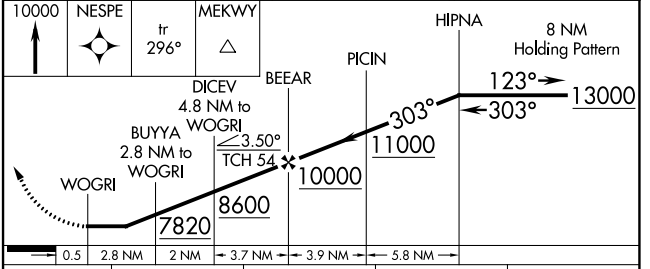
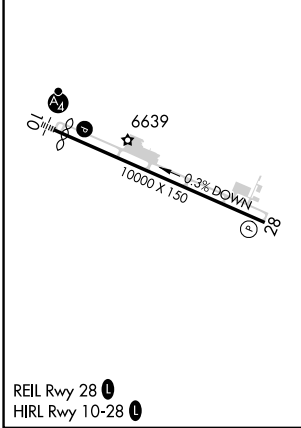
When local altimeter not received use Craig-Moffat altimeter setting and increase all MDA 100 feet, increase LP and LNAV Cat C/D visibility ¼ mile. Rwy 28 helicopter visibility reduction below ¾ SM NA.

MISSED APPROACH: Climb to 10000 direct NESPE and on track 296° to MEKWY and hold.

AWOS-3PT 119.275	DENVER CENTER 120.475 235.975	UNICOM 123.0 (CTAF) 0
----------------------------	---	---------------------------------



ELEV 6606	D	TDZE 6606
-----------	---	-----------



CATEGORY		A	B	C	D
LP	MDA	7000-1	394 (400-1)	7000-1½	394 (400-1½)
LNAV	MDA	7080-1	474 (500-1)	7080-1½	474 (500-1½)
CIRCLING		7220-1	614 (700-1)	7660-3	8180-3
				1054 (1100-3)	1574 (1600-3)

SW-1, 22 FEB 2024 to 21 MAR 2024

SW-1, 22 FEB 2024 to 21 MAR 2024

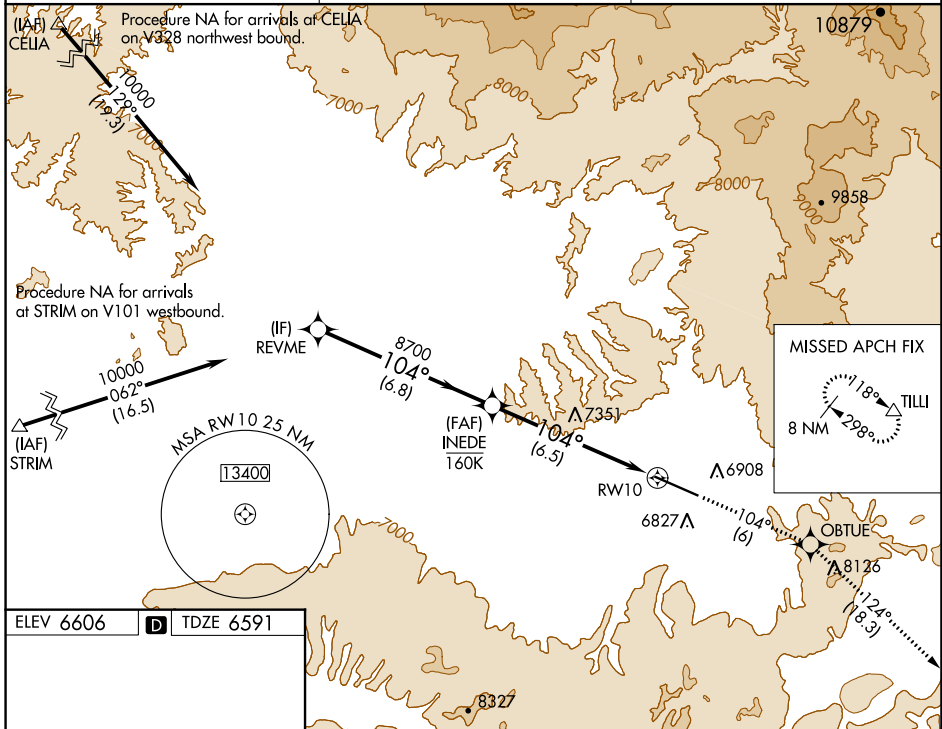
APP CRS	Rwy Idg	9490
104°	TDZE	6591
	Apt Elev	6606

RNAV (RNP) Z RWY 10

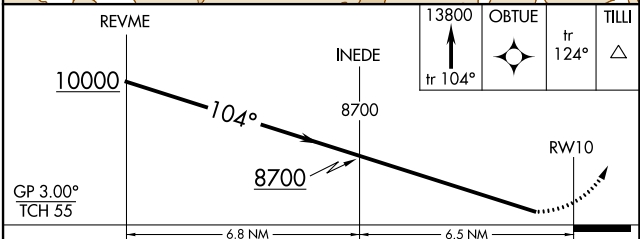
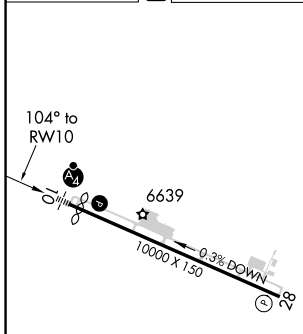
YAMPA VALLEY (HDN)

RNP AR APCH-GPS.	MALSF	MISSED APPROACH: Climb to 13800 on track 104° to OBTUE and on track 124° to TILLI and hold, continue climb-in-hold to 13800. *Missed approach requires minimum climb of 286 feet per NM to 8900.
<p>⚠ Rwy 10 helicopter visibility reduction below 3/4 SM NA. For uncompensated Baro-VNAV systems, procedure NA below -28°C or above 54°C. Inop table does not apply to RNP 0.30. For inop ALS, increase RNP 0.20 all Cats visibility to 2 SM.</p>		

AWOS-3PT 119.275	DENVER CENTER 120.475 235.975	UNICOM 123.0 (CTAF) 0
----------------------------	---	---------------------------------



ELEV 6606	D TDZE 6591
-----------	--------------------



CATEGORY	A	B	C	D
RNP 0.20 DA*		7016-1	425 (500-1)	
RNP 0.20 DA		7344-1½	753 (800-1½)	
RNP 0.30 DA		7949-5	1358 (1400-5)	

AUTHORIZATION REQUIRED

SW-1, 22 FEB 2024 to 21 MAR 2024

SW-1, 22 FEB 2024 to 21 MAR 2024

WAAS CH 53410 W10A	APP CRS 104°	Rwy Idg TDZE Apt Elev	9490 6591 6606
--	------------------------	-----------------------------	---

RNAV (GPS) Y RWY 10

YAMPA VALLEY (HDN)

RNP APCH-GPS.	MALSF 	MISSED APPROACH: Climb to 13700 direct OBTUE and on track 124° to TILLI and hold, continue climb-in-hold to 13700. * Missed approach requires minimum climb of 295 feet per NM to 8700.
▼ Rwy 10 helicopter visibility reduction below 3/4 SM NA. ▲ Inop table does not apply to *LPV all Cats, LNAV/VNAV all Cats, and LNAV Cats C/D. For uncompensated Baro-VNAV systems, LNAV/VNAV NA below -28°C or above 54°C.		

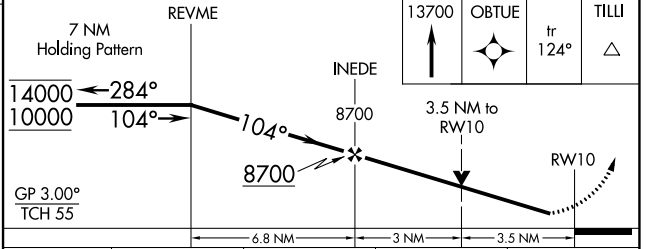
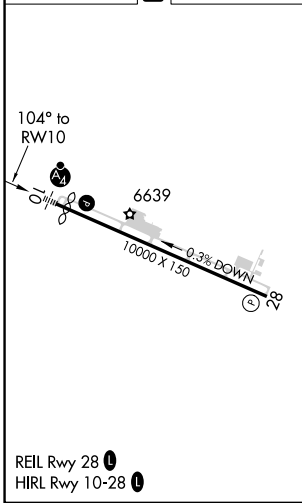
AWOS-3 119.275	DENVER CENTER 120.475 235.975	UNICOM 123.0 (CTAF)
--------------------------	---	-------------------------------



SW-1, 22 FEB 2024 to 21 MAR 2024

SW-1, 22 FEB 2024 to 21 MAR 2024

ELEV 6606 **D** TDZE 6591



CATEGORY	A	B	C	D
LPV DA*	6791-3/4 200 (200-3/4)			
LPV DA	7327-13/4 736 (800-13/4)			
LNAV/VNAV DA	7966-5 1375 (1400-5)			
LNAV MDA	7760-1 1169 (1200-1)	7760-1 1/4 1169 (1200-1 1/4)	7760-3	1169 (1200-3)
C CIRCLING	7760-1 1/4 1154 (1200-1 1/4)	7760-1 1/2 1154 (1200-1 1/2)	7760-3 1154 (1200-3)	8180-3 1574 (1600-3)

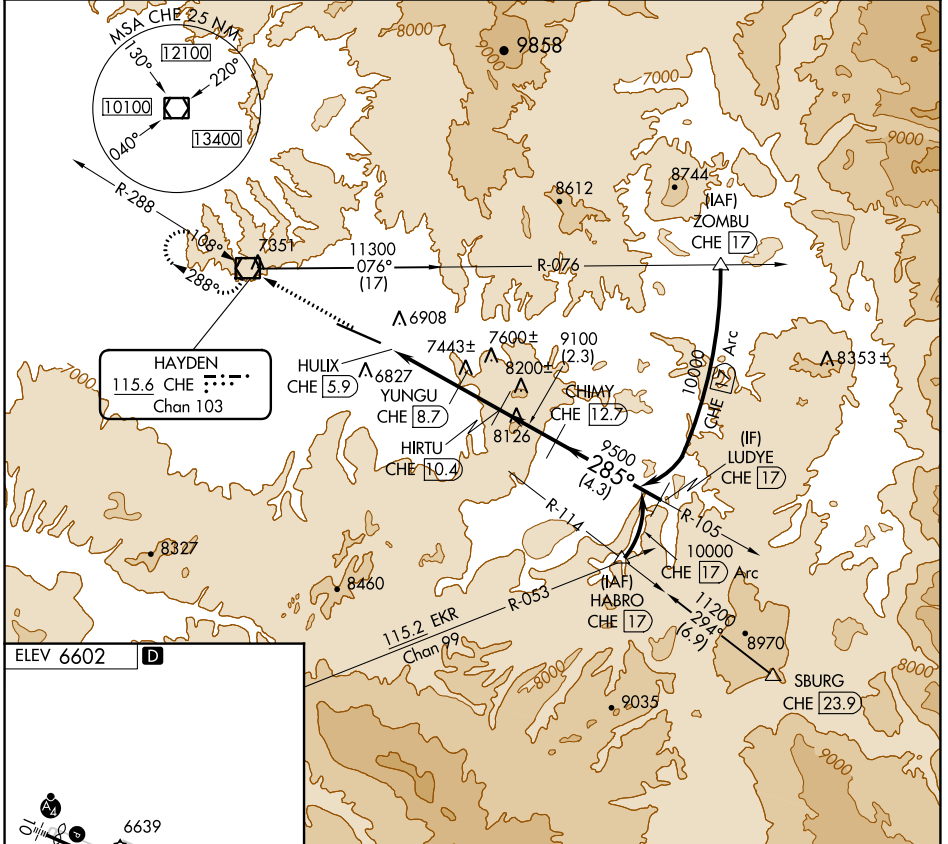
VOR/DME CHE 115.6 Chan 103	APP CRS 285°	Rwy Idg TDZE Apt Elev 6602	N/A N/A 6602
--	------------------------	--	--------------------

VOR/DME-B YAMPA VALLEY (HDN)

⚠ When local altimeter setting not received, use Craig-Moffat altimeter setting and increase all MDAs 100 feet. Visibility reduction by helicopters NA.

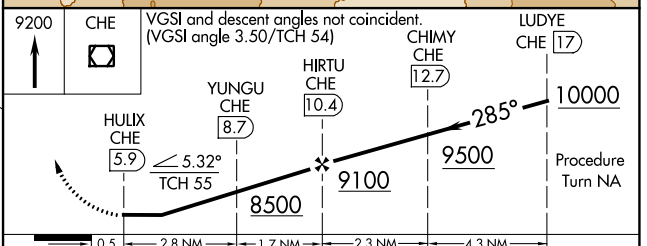
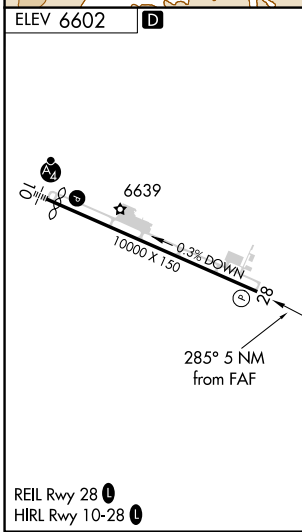
MISSED APPROACH: Climb to 9200 direct CHE VOR/DME and hold.

AWOS-3PT 119.275	DENVER CENTER 120.475 235.975	UNICOM 123.0 (CTAF) 0
----------------------------	---	--



SW-1, 22 FEB 2024 to 21 MAR 2024

SW-1, 22 FEB 2024 to 21 MAR 2024



CATEGORY	A	B	C	D
C CIRCLING	7900-1¼ 1298 (1300-1¼)	7900-1½ 1298 (1300-1½)	7900-3 1298 (1300-3)	8180-3 1574 (1600-3)