





DEPARTURE ROUTE DESCRIPTION

TAKEOFF RWY 1: Climb heading 010° to 1500 before turning right.  
Then on assigned heading to assigned altitude. Thence....

DEPARTING ALL OTHER AUTHORIZED RUNWAYS/AIRPORTS: Climb on  
assigned heading to assigned altitude. Thence....

...on RADAR vectors to join VHP R-174 to DAWNN INT then on transition or  
assigned route. Expect clearance to requested altitude ten minutes after departure.

LOUISVILLE TRANSITION (DAWNN1.IIU): From over DAWNN INT on IIU R-311 to  
IIU VORTAC.

MYSTIC TRANSITION (DAWNN1.MYS): From over DAWNN INT on MYS R-002 to  
MYS VOR.

EC-2, 22 FEB 2024 to 21 MAR 2024

EC-2, 22 FEB 2024 to 21 MAR 2024

(OOM5.OOM) 23334

# HOOSIER FIVE DEPARTURE

AL-6614 (FAA)

INDY SOUTH GREENWOOD (HFY)  
INDIANAPOLIS, INDIANA

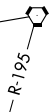
AWOS-3P  
118.525  
INDIANAPOLIS DEP CON  
124.95 317.8

**TOP ALTITUDE:  
ASSIGNED BY ATC**

1500



BRICKYARD  
116.3 VHP Chan 110



R-195

3000  
195°  
(42)

HOOSIER  
110.2 OOM Chan 39

R-018

TAKEOFF MINIMUMS:  
Rwy 1, 19: Standard.

V305

3500  
\*2300  
207°  
(42)

WEGEE

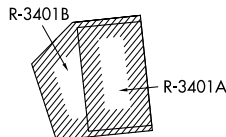
3500  
\*2100  
223°  
(51)

POCKET CITY  
113.3 PXV Chan 80



R-043

V305



**DEPARTURE ROUTE DESCRIPTION**  
TAKEOFF RWY 1: Climb heading 010° to 1500 before turning right. Then on assigned heading to assigned altitude. Thence....  
DEPARTING ALL OTHER AUTHORIZED RUNWAYS: Climb on assigned heading to assigned altitude. Thence....  
....expect RADAR vectors to join VHP R-195 to OOM VORTAC then via transition or assigned route. Expect clearance to requested altitude ten minutes after departure.  
POCKET CITY TRANSITION (OOM5.PXV): From over OOM VORTAC via OOM R-207 to WEGEE, then via PXV R-043 to PXV VORTAC.

- NOTE: RADAR required.
- NOTE: Select appropriate localizer/DME frequency/channel prior to departure.
- NOTE: Turbojets accelerate to 250K until reaching 10000, if unable advise ATC.
- NOTE: Assigned to aircraft with a requested altitude of 11000 or above.

NOTE: Chart not to scale.

EC-2, 22 FEB 2024 to 21 MAR 2024

EC-2, 22 FEB 2024 to 21 MAR 2024

HOOSIER FIVE DEPARTURE  
(OOM5.OOM) 01FEB18

INDIANAPOLIS, INDIANA  
INDY SOUTH GREENWOOD (HFY)

(MAREO5.MAREO) 23334  
**MAREO FIVE DEPARTURE**

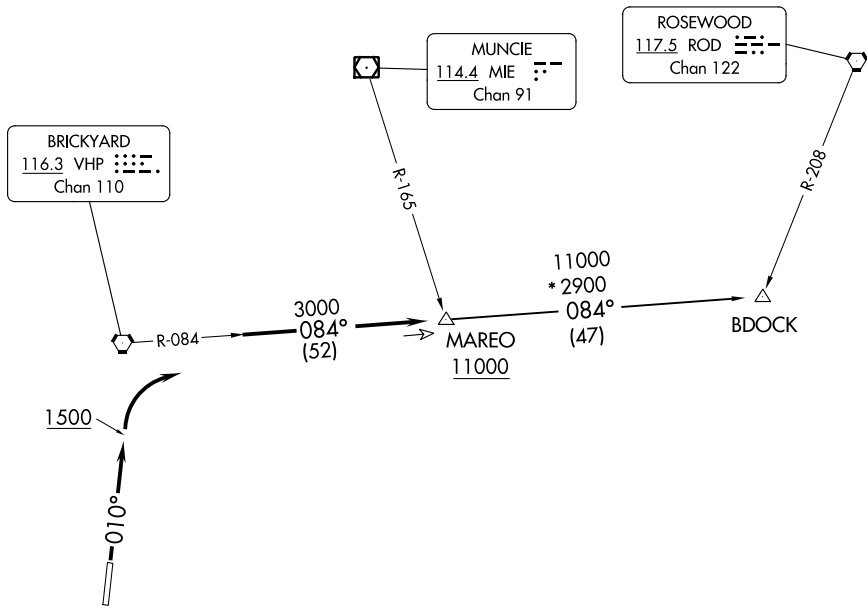
AL-6614 (FAA)

INDY SOUTH GREENWOOD (HFY)  
 INDIANAPOLIS, INDIANA

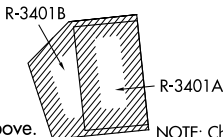
AWOS-3P  
 118.525  
 INDIANAPOLIS DEP CON  
 124.95 317.8

**TOP ALTITUDE:  
 ASSIGNED BY ATC**

TAKEOFF MINIMUMS:  
 Rwy 1, 19: Standard.



- NOTE: RADAR required.
- NOTE: Select appropriate localizer/DME frequency/channel prior to departure.
- NOTE: Turbojets accelerate to 250K until reaching 10000, if unable advise ATC.
- NOTE: Assigned to aircraft with a requested altitude of 11000 or above.



NOTE: Chart not to scale.

**DEPARTURE ROUTE DESCRIPTION**

TAKEOFF RWY 1: Climb heading 010° to 1500 before turning right. Then on assigned heading to assigned altitude. Thence....

DEPARTING ALL OTHER AUTHORIZED RUNWAYS: Climb on assigned heading to assigned altitude. Thence....

...expect RADAR vectors to join VHP R-084 to MAREO INT then via transition or assigned route. Expect clearance to requested altitude ten minutes after departure.

BDOCK TRANSITION (MAREO5.BDOCK): From over MAREO INT via VHP R-084 to BDOCK INT.

(MEARZ7.MEARZ) 23334

# MEARZ SEVEN DEPARTURE

AL-6614 (FAA)

INDY SOUTH GREENWOOD (HFY)

INDIANAPOLIS, INDIANA

**TOP ALTITUDE:  
ASSIGNED BY ATC**

RADAR required.

AWOS-3P

118.525

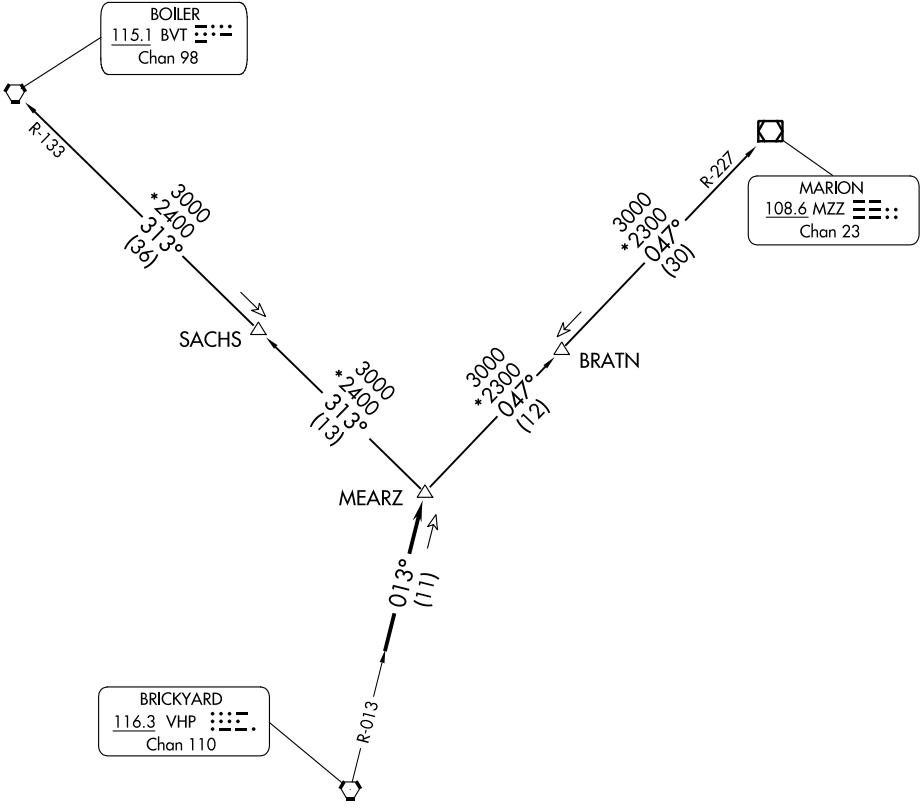
INDIANAPOLIS DEP CON

124.95 317.8

BOILER  
115.1 BVT  
Chan 98

MARION  
108.6 MZZ  
Chan 23

BRICKYARD  
116.3 VHP  
Chan 110



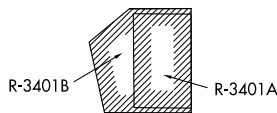
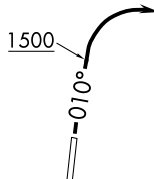
### TAKEOFF MINIMUMS

Rwy 1, 19: Standard.

NOTE: Turbojets accelerate to 250K until reaching 10000, if unable advise ATC.

NOTE: Assigned to aircraft with a requested altitude of 11000 or above.

NOTE: Select appropriate localizer/DME frequency/channel prior to departure.



NOTE: Chart not to scale.

(NARRATIVE ON FOLLOWING PAGE)

# MEARZ SEVEN DEPARTURE

(MEARZ7.MEARZ) 19MAY22

INDIANAPOLIS, INDIANA

INDY SOUTH GREENWOOD (HFY)

EC-2, 22 FEB 2024 to 21 MAR 2024

EC-2, 22 FEB 2024 to 21 MAR 2024



DEPARTURE ROUTE DESCRIPTION

TAKEOFF RUNWAY 1: Climb on heading on 010° to 1500 before turning right. Then on assigned heading to assigned altitude. Thence....

DEPARTING ALL OTHER AUTHORIZED RUNWAYS: Climb on assigned heading to assigned altitude. Thence....

....expect RADAR vectors to join VHP R-013 to MEARZ then on transition or assigned route. Expect clearance to requested altitude ten minutes after departure.

BOILER TRANSITION (MEARZ7.BVT): From over MEARZ on BVT R-133 to BVT VORTAC.

MARION TRANSITION (MEARZ7.MZZ): From over MEARZ on MZZ R-227 to MZZ VOR/DME.

EC-2, 22 FEB 2024 to 21 MAR 2024

EC-2, 22 FEB 2024 to 21 MAR 2024

**(ROCKY1.ROCKY) 23334**  
**ROCKY ONE DEPARTURE**

AL-6614 (FAA)

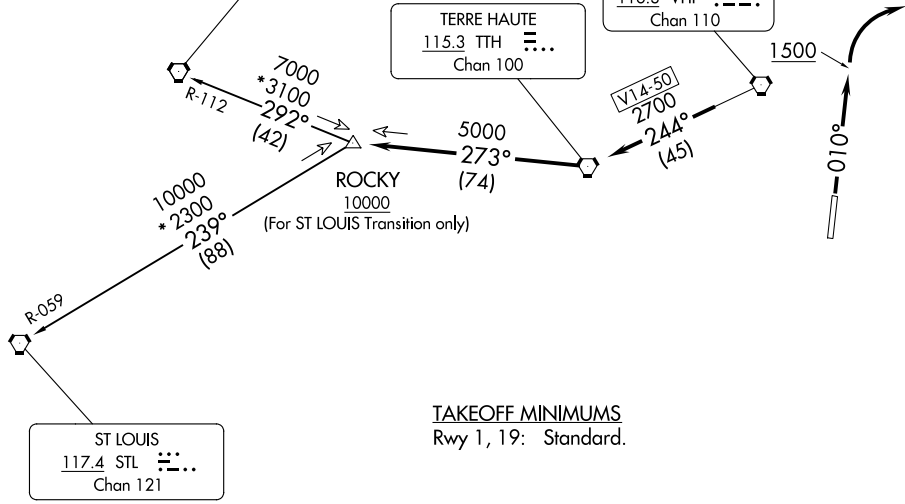
INDY SOUTH GREENWOOD (HFY)  
 INDIANAPOLIS, INDIANA

AWOS-3P  
 118.525  
 INDIANAPOLIS DEP CON  
 124.95 317.8

SPINNER  
 112.7 SPI  
 Chan 74

TERRE HAUTE  
 115.3 TTH  
 Chan 100

BRICKYARD  
 116.3 VHP  
 Chan 110



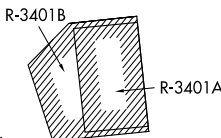
**TAKEOFF MINIMUMS**  
 Rwy 1, 19: Standard.

NOTE: RADAR required.

NOTE: Select appropriate localizer/DME frequency/channel prior to departure.

NOTE: Turbojets accelerate to 250K until reaching 10000, if unable advise ATC.

NOTE: Assigned to aircraft with a requested altitude of 11000 or above.



NOTE: Chart not to scale.

**DEPARTURE ROUTE DESCRIPTION**

**TAKEOFF RWY 1:** Climb heading 010° to 1500 before turning right. Then on assigned heading to assigned altitude. Thence . . . .

**DEPARTING ALL OTHER AUTHORIZED RUNWAYS:** Climb on assigned heading to assigned altitude. Thence . . . .

. . . . expect RADAR vectors to join VHP R-244 to TTH VORTAC, then via TTH R-273 to ROCKY INT then via transition or assigned route. Expect clearance to requested altitude ten minutes after departure.

**SPINNER TRANSITION (ROCKY1.SPI):** From over ROCKY INT on SPI R-112 to SPI VORTAC.  
**ST LOUIS TRANSITION (ROCKY1.STL):** From over ROCKY INT on STL R-059 to STL VORTAC.

**ROCKY ONE DEPARTURE**  
**(ROCKY1.ROCKY) 01FEB18**

INDIANAPOLIS, INDIANA  
 INDY SOUTH GREENWOOD (HFY)

EC-2, 22 FEB 2024 to 21 MAR 2024

EC-2, 22 FEB 2024 to 21 MAR 2024