

LOC -HFKP 111.9 Chan 56	APCH CRS 225°	Rev./Idg TDZE Appl Elev	10_926 571 571
---	-------------------------	-------------------------------	---

AL-679 (USA)

CAMPBELL AAF (KHOP)

RADAR required

▼ ** When A15 Inop, increase RVR to 40, vis to ¼ miles.
** When A15 Inop, increase CAT AB RVR to 55, vis to 1 mile. CAT CDE RVR to 60, vis to 1½ miles.
*** Circling not authorized SE of Rwy 5-23.

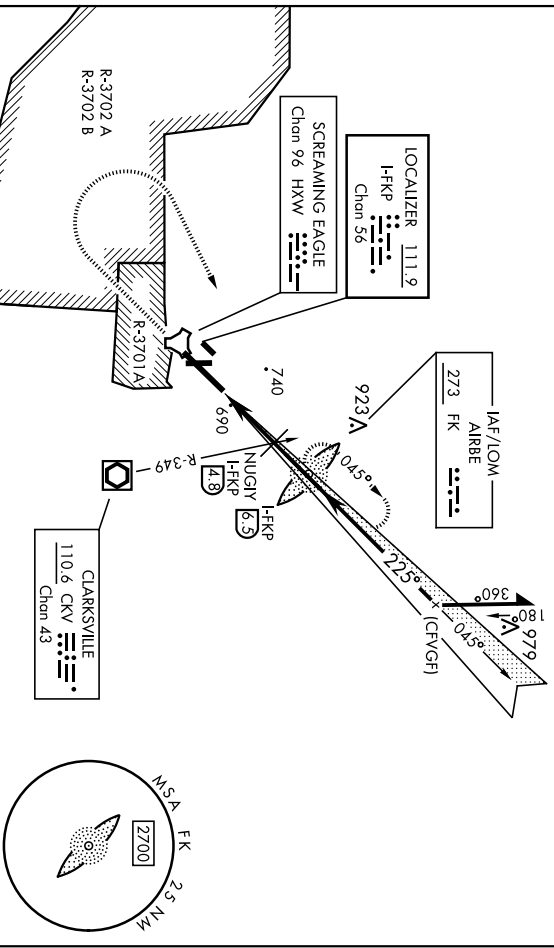


MISSED APPROACH: Climb to 1200 then climbing right turn to 2500 direct AIRBE LOW/-HFKP 6.5 DME, continue climb-in-hold to 2500 (max 230 KIAS).

ATIS 125-175 308.4	APP CON 118.1 269.525	TOWER 120.9 276.8	GND CON 121.8 266.8	CINC DEL 138.8	ASR/PAR
------------------------------	---------------------------------	-----------------------------	-------------------------------	--------------------------	---------

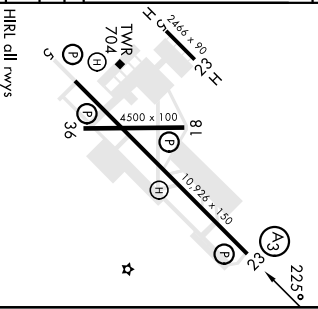
912

CAT E procedure turn not authorized.



ELEV	571	TDZE	571
------	-----	------	-----

1200	2500	AIRBE	HFKP 6.5	AIRBE LOW	HFKP 6.5	Remain within 10 NM	
VGS1 and glidepath not coincident (VGS1 Angle 3.00/TCH 78).							
						GS 3.00° TCH 57	
CATEGORY	A	B	C	D	E		
S-ILS 23 *	771/24					200	(200-½)
S-LOC 23 **	960/24 389 (400-½)					960/35	389 (400-¾)
CIRCLING ***	1060-1 489 (500-1)					1060-1½	1140-2 569 (600-2)



HRL all rwy's						
FAF to MAP 4.4 NM						
Knots	60	90	120	150	180	
Min:Sec	4:24	2:56	2:12	1:46	1:28	

FORT CAMPBELL, KENTUCKY
 Anch 14 10AUG23
 36° 40'N - 87° 30'W
 CAMPBELL AAF (KHOP)
 ILS or LOC RWY 23

NDB RWY 23

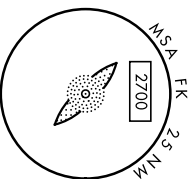
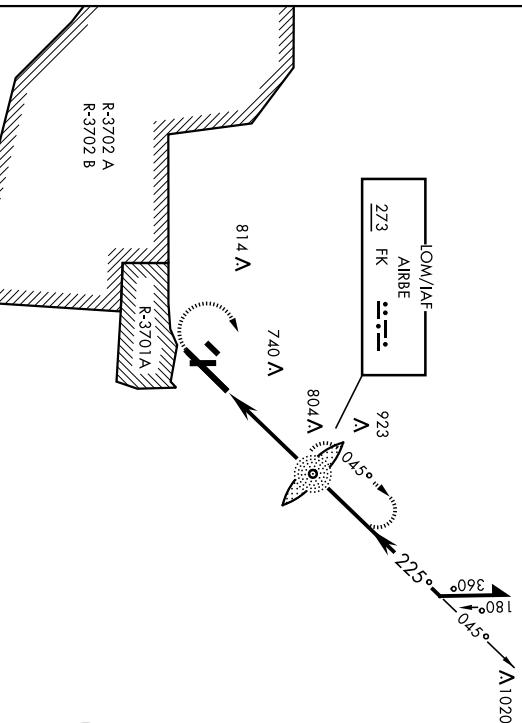
AL-679 [USA]

CAMPBELL AAF (KHOP)

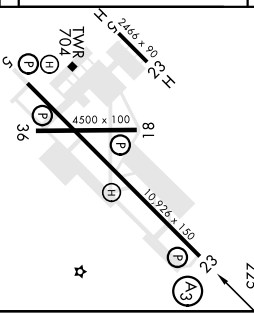
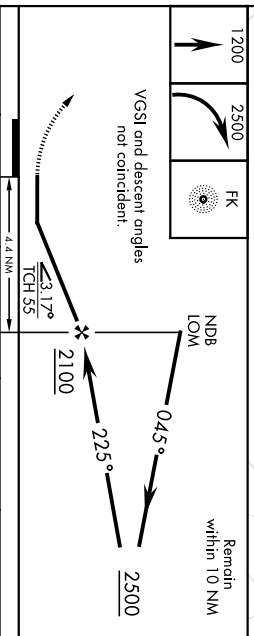
NDB FK 273	APCH CRS 225°	Rwy Idg 571	TDZE Appt Elev 571	SSAIR (A3)	MISSED APPROACH: Climb to 1200, then climbing right turn to 2500 direct to FK LOM and continue climb-in-hold (max 230 KIAS).
ATIS 125.175 308.4	APP CON 118.1 269.525	TOWER 120.9 278.8	GND CON 121.8 266.8	CINCL DEL 138.8	ASR/PAR

▼ ** When AIS Inop, increase CAT AB RVR to 55, vis to 1/2 mile, CAT CD vis to 1/8 miles.
** Circling not authorized SE of Rwy 5-23.

912



ELEV 571	TDZE 571
----------	----------



CATEGORY	A		B		C		D	
	1120-1	549 (600-1)	1120-1 1/2	549 (600-1 1/2)	1140-2	569 (600-2)		
S-23*	1120/40	549 (600-3/4)	1120/60	549 (600-1 1/2)				
CIRCLING**	1120-1	549 (600-1)	1120-1 1/2	549 (600-1 1/2)	1140-2	569 (600-2)		

HRIL all Rwy	FAF to MAP 4.4 NM
--------------	-------------------

Knots	60	90	120	150	180
Mins:Sec	4:24	2:56	2:12	1:46	1:28

CAMPBELL AAF (KHOP) NDB RWY 23

AL-679 [USA]

CAMPBELL AAF (KHOP)

ARCH CRS	Rwy Idg	4500
180°	TDZE	562
	Appr Elev	571

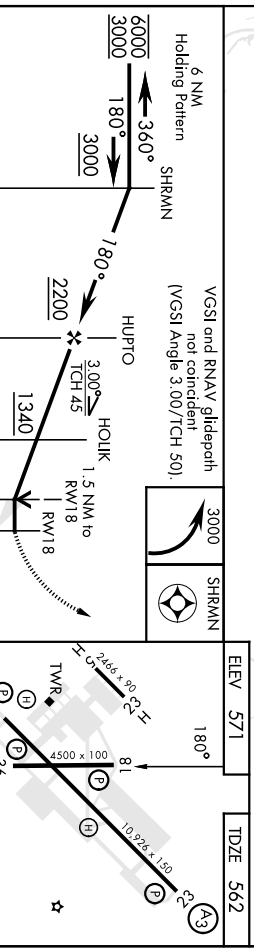
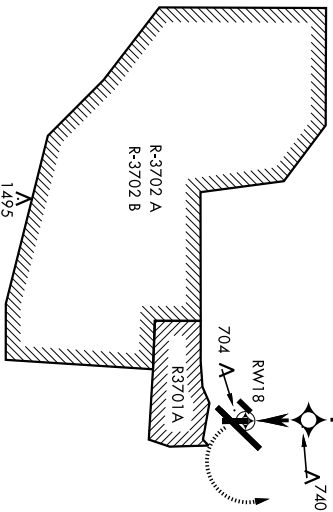
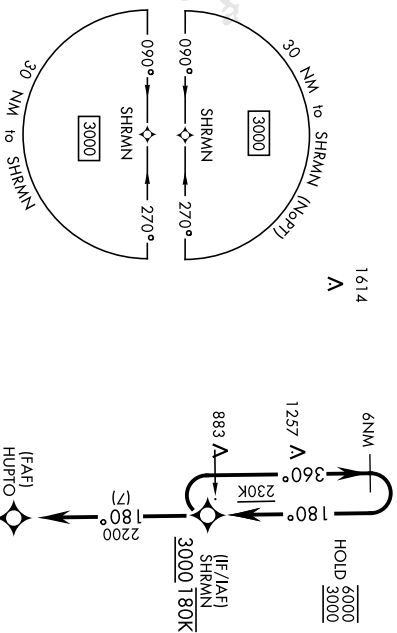
RNAV1 - GPS

DME required:

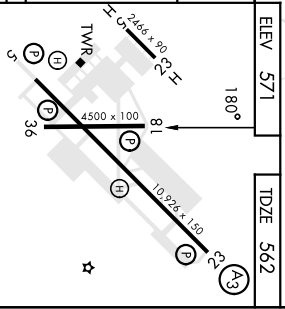
* Gridding NA SE of RWY 5-23.

MISSED APPROACH: Climbing left turn to 3000
direct SHRMN and hold.

ATIS	APP CON	TOWER	GND CON	CLNC DEL	ASR/ PAR
125.175 308.4	118.1 269.525	120.9 278.8	121.8 266.8	138.8	



CATEGORY	A	B	C	D
LNAV MDA	1080-1	518 (600-1)	1080-1 3/8	NA
GIRCLINGS*	1080-1	509 (600-1)	1080-1 1/2	NA



WAAS Chen 56203 W23A	APCH CRS 225°	Rev./Idg TDZE 571 App/Elev 571	10 926
--	-------------------------	--	---------------

AL-679 [USA]

CAMPBELL AAF (KHOP)

RNP APCH - GPS

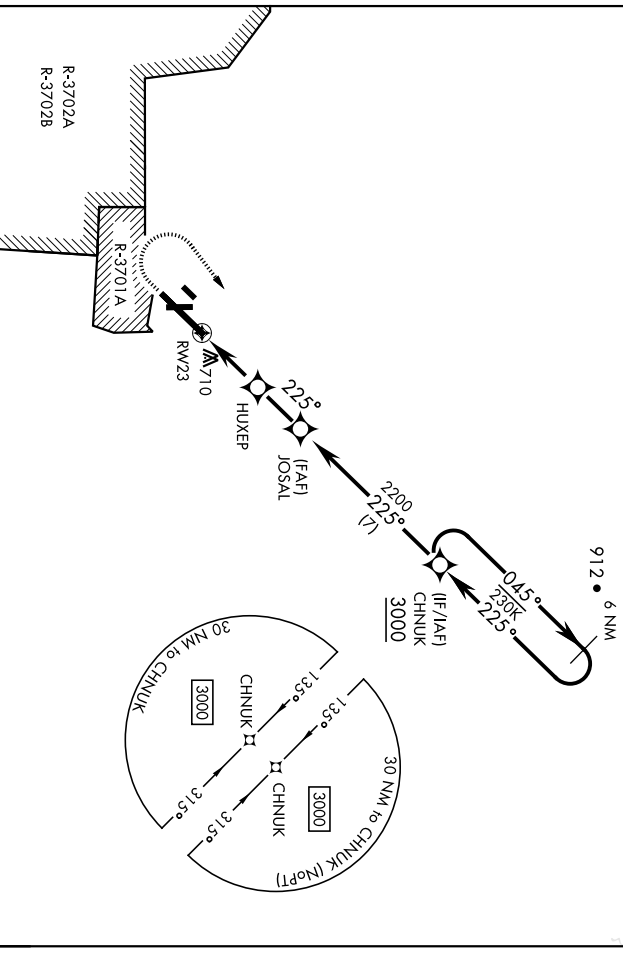
▼ ** When ALS inop, increase RVR to 40, vis to ¼ mile.
 *** When ALS inop, increase RVR to 55, vis to 1 mile.
 **** When ALS inop, increase CAT I/II RVR to 55, vis to 1 mile.
 CAT I/II/III RVR to 60, vis to 1 1/8 miles.
 ***** Circling MSA SE of Rwy 5-23.

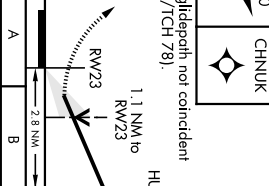
SSALR

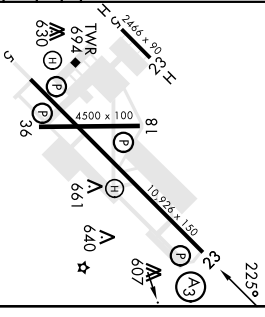

MISSED APPROACH: Climb to 1000 then climbing right turn to 3000 direct CHNUK and hold.

ATIS 125.175 308.4	APP CON 118.1 269.525	TOWER 120.9 278.8	GND CON 121.8 266.8	CLNC DEL 138.8	ASR/PAR
------------------------------	---------------------------------	-----------------------------	-------------------------------	--------------------------	---------

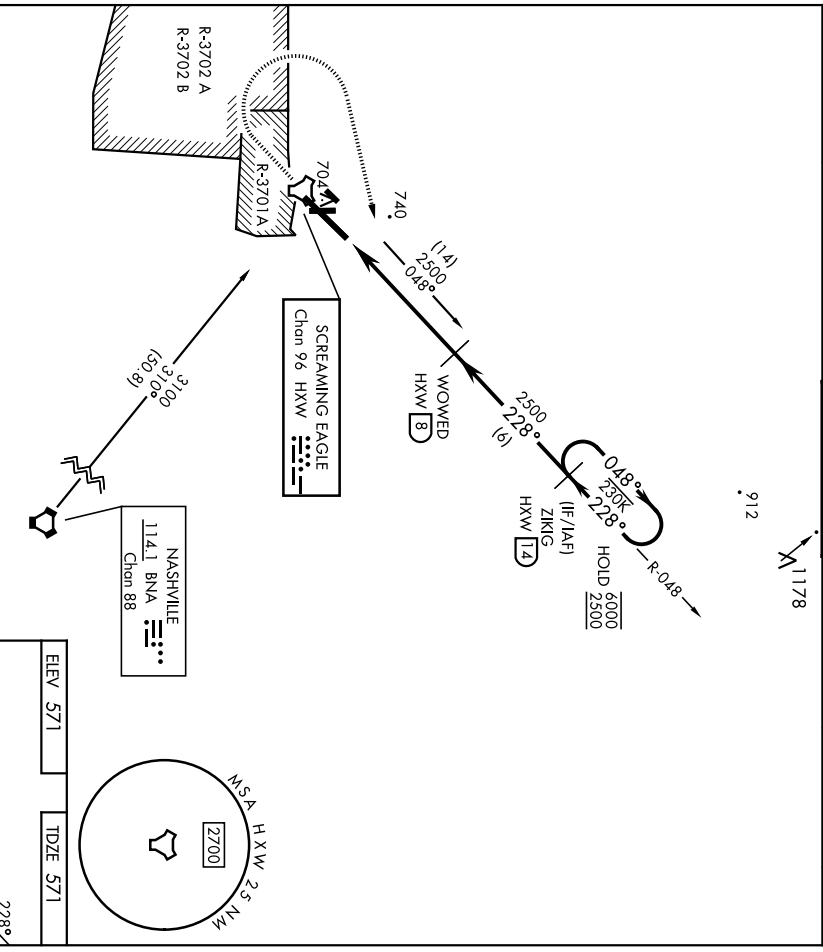
For uncomputerized BARO-VNAV systems,
 LNAV/VNAV MSA Below -19°C (-2°F) or
 above 54°C (130°F).



1000	3000	CHNUK	ELEV 571	TDZE 571	
VGSF and RNAV glidepath not coincident (VGSF Angle 3.00/TCH 78).					
					
CATEGORY	A	B	C	D	E
LPV DA *	771 / 24	200	(200-1/2)		
LNAV/ DA **	949 / 35	378	(400-3/8)		
LNAV MDA ***	960 / 24 389 (400-1/2)		960 / 35 389 (400-3/4)		
ⓐ CIRCLING ****	1060-1 489 (500-1)	1060-1 1/2 489 (500-1 1/2)	1140-2 569 (600-2)		
HIRL all Rwy					



TACAN HXW Chon 96	APCH CRS 228°	Rwy Idg TDZE Appl Elev	10 926 571 571	AL-679 [USA]	CAMPBELL AAF (KHOP)
* When ALS Inop, increase CAT AB RVR to 55, vis to 1 mile; CAT CDE vis to 1 3/8 mile. ** Circling not authorized SE of Rwy 5-23.		SSALR MISSED APPROACH: Climb to 1200 then climbing right turn to 2500 on hdd 078° and HXW TACAN R-048 to ZIKIG/ HXW 14 DME and hold	912		
ATIS 125.475 308.4	APP CON 118.1 269.525	TOWER 120.9 278.8	GND CON 121.8 266.8	CINC DEL 138.8	ASR/PAR



1200	2500	VCSI and descent angles not coincident. (WGS Angle 3.00/TCH 78), WOMED				
HXW R-048	HXW R-048	ZIKIG holding pattern One minute holding pattern				
TACAN	VAVUY	TCH 55 3.06°				
CATEGORY A B C D E		5.8 NM				
S-23 *	1080/24 509 (600-3/4)	1080/55 509 (600-1 1/4)	1080-1 1/2 509 (600-1 1/4)	1140-2 569 (600-2)		
DIRCLING **	1080-1 509 (600-1)	1080-1 1/2 509 (600-1 1/4)	1140-2 569 (600-2)			

FORT CAMPBELL, KENTUCKY
 Andri 1 23MAR23
 CAMPBELL AAF (KHOP)
 TACAN RWY 23