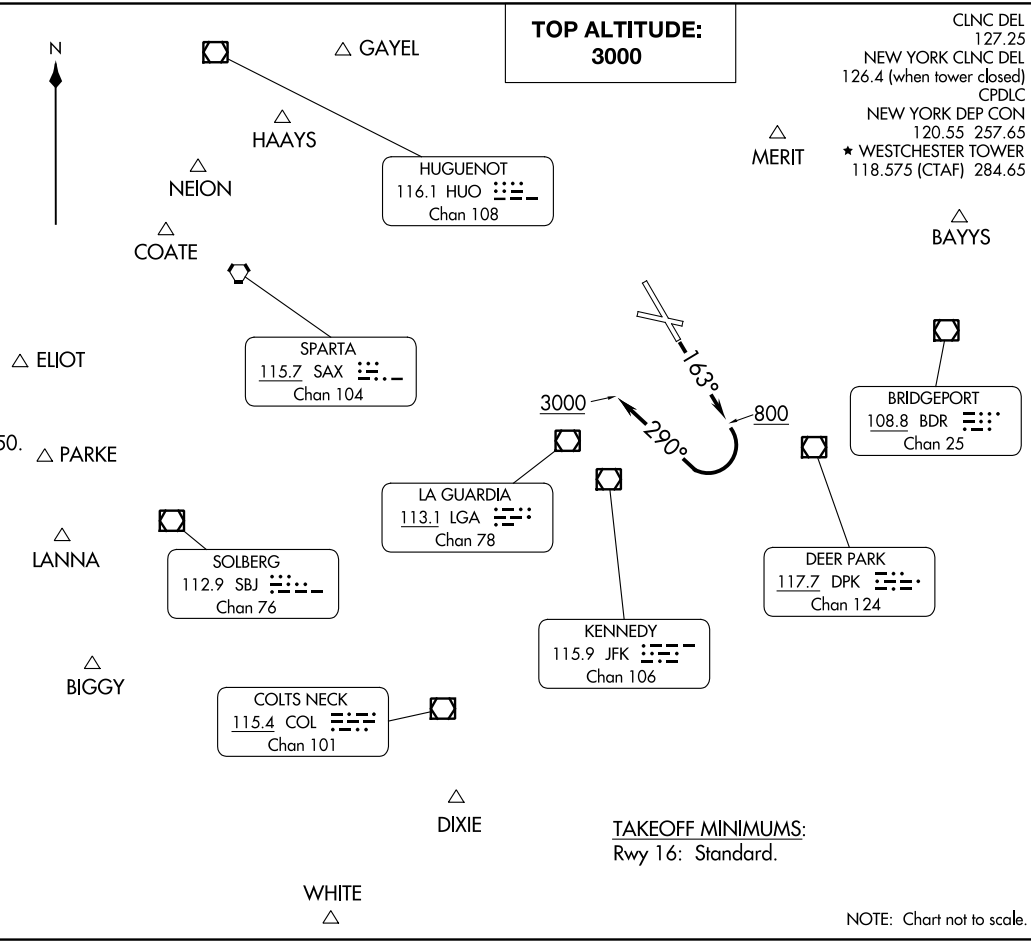


PROP ONE DEPARTURE
(PROP1.PROP) 22JUN17
WHITE PLAINS, NEW YORK
WESTCHESTER COUNTY (HPN)

- NOTE: RADAR required.
- NOTE: BIGGY departures expect vectors to SBJ/SBJ R-237.
- NOTE: COATE departures expect vectors to SAX VORTAC or SAX R-311.
- NOTE: ELIOT departures expect vectors to SAX R-252.
- NOTE: GAYEL departures expect vectors to DPK R-320.
- NOTE: LANNA departures expect vectors to PTW R-059.
- NOTE: MERIT departures expect vectors to LGA R-055.
- NOTE: NEION departures expect vectors to LGA R-322.
- NOTE: PARKE departures expect vectors to BWZ/BWZ R-250.
- NOTE: WHITE departures expect vectors to COL VOR/DME or COL R-204.
- NOTE: DIXIE departures expect vectors to JFK VOR/DME.
- NOTE: HAAYS departures expect vectors to HUO R-145.
- NOTE: BAYYS departures expect vectors to BDR VOR/DME or BDR R-054.



(PROP1.PROP) 23334
AL-651 (FAA)
WESTCHESTER COUNTY (HPN)
WHITE PLAINS, NEW YORK

PROP ONE DEPARTURE



DEPARTURE ROUTE DESCRIPTION

*TAKEOFF RUNWAY 16: Climb heading 163° to 800, then climbing right turn to 3000 on heading 290°, thence. . . .

. . . . on vectors to assigned route/fix. Maintain 3000. Expect clearance to filed altitude within 10 minutes after departure.

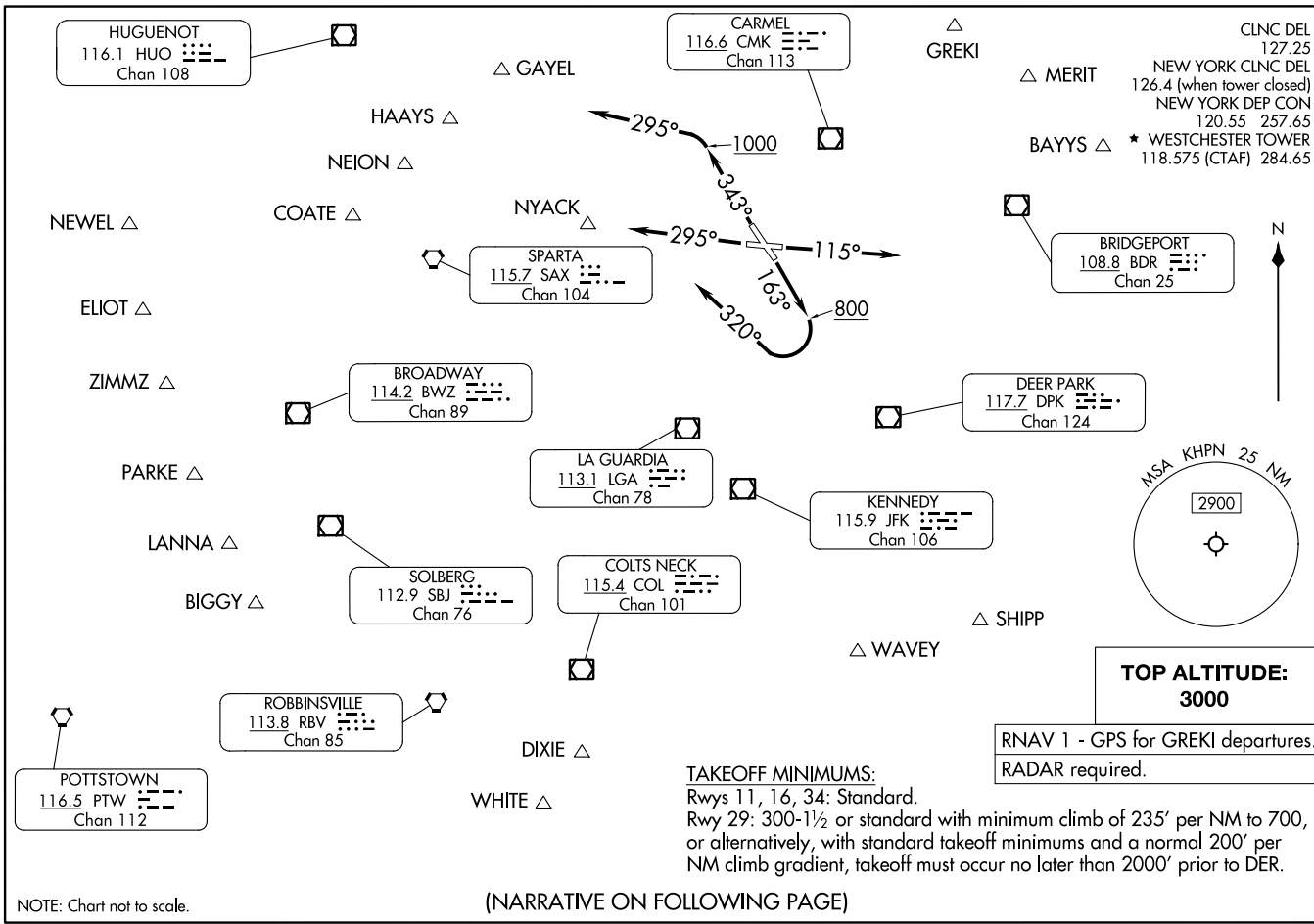
* NOTE: Do not exceed 190K until established on heading 290°.

NE-2, 22 FEB 2024 to 21 MAR 2024

NE-2, 22 FEB 2024 to 21 MAR 2024

WESTCHESTER EIGHT DEPARTURE
(HPN8,HPN) 30NOV23

WHITE PLAINS, NEW YORK
WESTCHESTER COUNTY (HPN)



(HPN8,HPN) 23334

AL-651 (FAA)

WESTCHESTER COUNTY (HPN)
WHITE PLAINS, NEW YORK

WESTCHESTER EIGHT DEPARTURE



DEPARTURE ROUTE DESCRIPTION

TAKEOFF RUNWAY 11: Climb on heading 115°, maintain 3000. Thence. . . .

TAKEOFF RUNWAY 29: Climb on heading 295°, maintain 3000. Thence. . . .

*TAKEOFF RUNWAY 16: Climb on heading 163° to 800, then climbing right turn heading 320°, maintain 3000. Thence. . . .

TAKEOFF RUNWAY 34: Climb on heading 343° to 1000, then climbing left turn heading 295°, maintain 3000. Thence. . . .

. . . . on RADAR vectors to assigned route/fix. Expect clearance to filed altitude/flight level ten (10) minutes after departure.

*NOTE: Do not exceed 190K until established on heading 320°.

NOTE: BAYYS departures expect RADAR vectors to BDR VOR/DME or BDR R-054.

NOTE: BIGGY departures expect RADAR vectors to SBJ/SBJ R-237.

NOTE: COATE departures expect RADAR vectors to SAX VORTAC or SAX R-311.

NOTE: DIXIE departures expect RADAR vectors to JFK VOR/DME.

NOTE: ELIOT departures expect RADAR vectors to SAX R-252. ELIOT may be accessed by all type aircraft requesting a final altitude of 14000 to 16000.

NOTE: GAYEL departures expect RADAR vectors to DPK R-320.

NOTE: GREKI departures expect RADAR vectors.

NOTE: HAAYS departures expect RADAR vectors to HUO R-145.

NOTE: LANNA departures expect RADAR vectors to PTW R-059.

NOTE: MERIT departures expect RADAR vectors to LGA R-055.

NOTE: NEION departures expect RADAR vectors to LGA R-322.

NOTE: NEWEL departures expect RADAR vectors to SAX R-264. NEWEL may be accessed by turbojet aircraft only requesting a final altitude at or above FL180.

NOTE: PARKE departures expect RADAR vectors to BWZ/BWZ R-250.

NOTE: SHIPP departures expect RADAR vectors to JFK/JFK R-139.

NOTE: WAVEY departures expect RADAR vectors to JFK/JFK R-156.

NOTE: WHITE departures expect RADAR vectors to COL VOR/DME or COL R-204.

NOTE: ZIMMZ departures expect RADAR vectors to SAX R-250. ZIMMZ may be accessed by all type aircraft requesting a final altitude at or above FL180.

NE-2, 22 FEB 2024 to 21 MAR 2024

NE-2, 22 FEB 2024 to 21 MAR 2024