

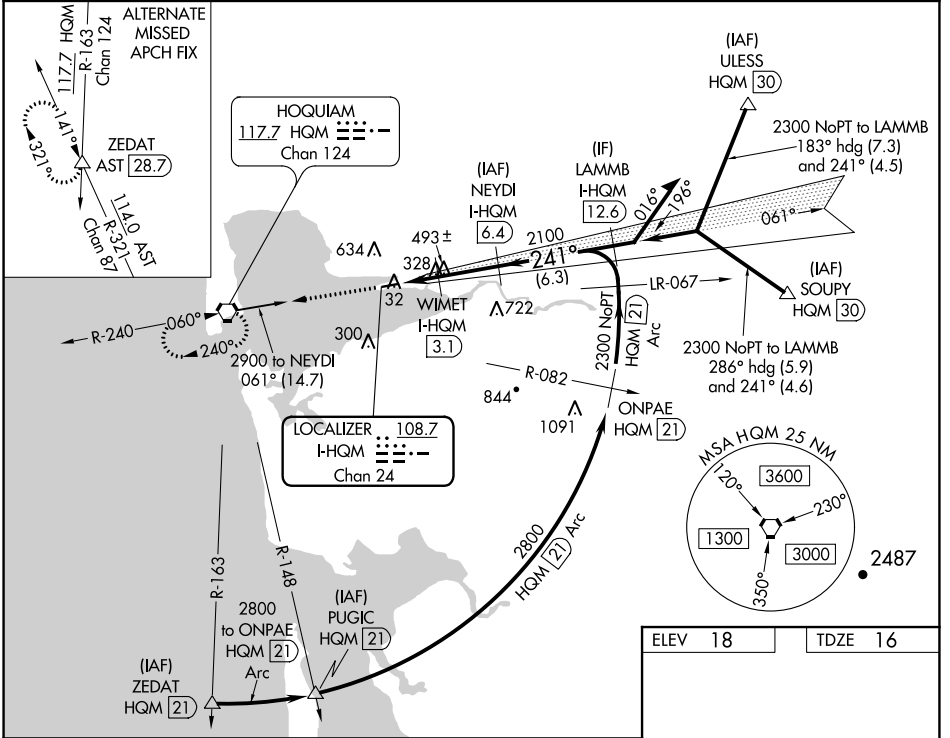
LOC/DME I-HQM <b>108.7</b> Chan <b>24</b>	APP CRS <b>241°</b>	Rwy Idg <b>5000</b> TDZE <b>16</b> Apt Elev <b>18</b>
---	------------------------	---

# ILS or LOC RWY 24

BOWERMAN (HQM)

DME required.	MALSR	MISSED APPROACH: Climb to 2500 direct HQM VORTAC and hold.
<p>⚠ Circling NA northwest of Rwy 6-24. When local altimeter setting not received, procedure NA. For inop ALS, increase S-ILS 24 Cat C visibility to ¾ and S-LOC 24 Cat C visibility to 1 ½ SM.</p>		

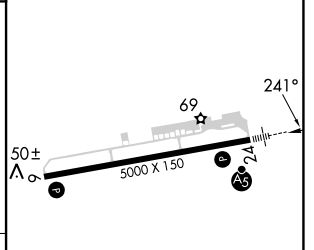
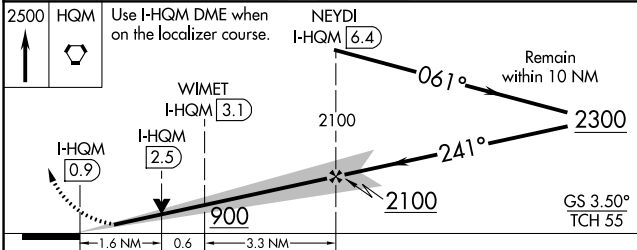
ASOS <b>135.775</b>	SEATTLE CENTER <b>128.3 269.0</b>	UNICOM <b>122.7 (CTAF)</b>
------------------------	--------------------------------------	-------------------------------



NW-1, 22 FEB 2024 to 21 MAR 2024

NW-1, 22 FEB 2024 to 21 MAR 2024

ELEV 18	TDZE 16
---------	---------



CATEGORY	A	B	C	D
S-ILS 24	216-½	200 (200-½)	286-½ 270 (300-½)	NA
S-LOC 24	580-½	564 (600-½)	580-1¼ 564 (600-1¼)	NA
CIRCLING	580-1	562 (600-1)	800-2¼ 782 (800-2¼)	NA


REIL Rwy 6	REIL Rwy 6-24
------------	---------------

WAAS CH <b>86902</b> W24A	APP CRS <b>241°</b>	Rwy ldg <b>5000</b> TDZE <b>16</b> Apt Elev <b>18</b>
---------------------------------	------------------------	---

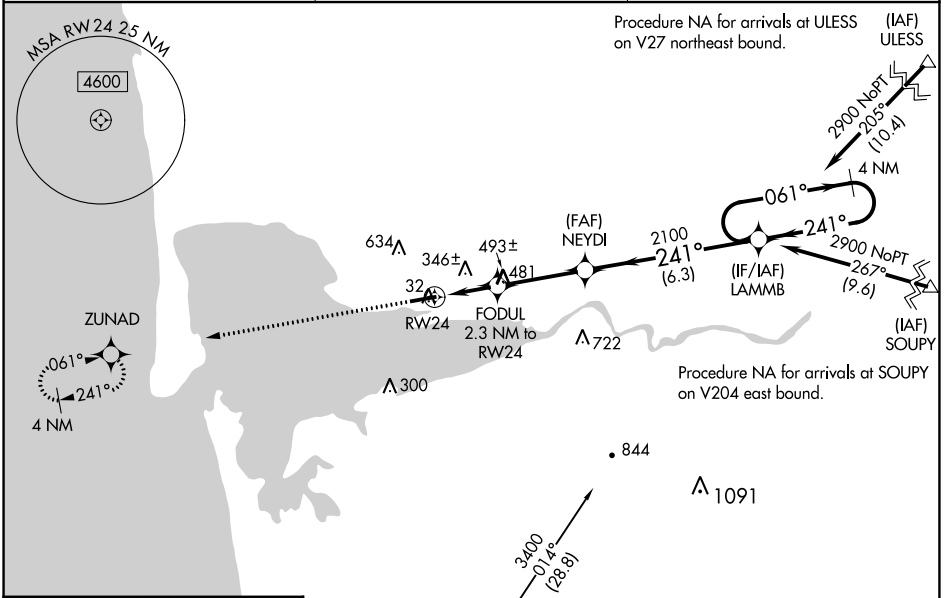
# RNAV (GPS) RWY 24

BOWERMAN (HQM)

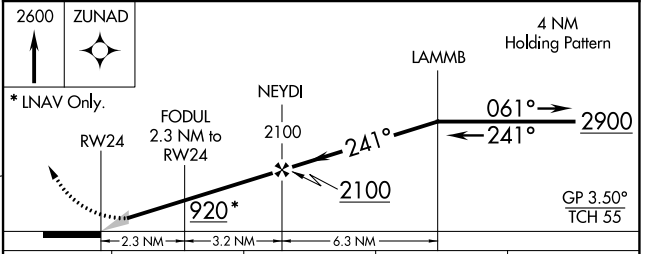
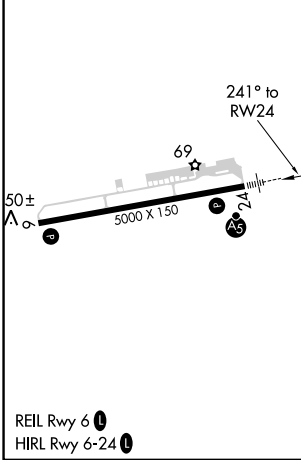
**⚠** For uncompensated Baro-VNAV systems, LNAV/VNAV NA below -6°C (22°F) or above 43°C (109°F). When local altimeter setting not received, procedure NA. Circling NA northwest of Rwy 6-24. DME/DME RNP-0.3 NA. For inoperative MALSR, increase LPV Cat C visibility to 3/8 mile and LNAV Cat C visibility to 2 1/2 miles.

**MALSR**  
 MISSED APPROACH: Climb to 2600 direct ZUNAD and hold.

ASOS <b>135.775</b>	SEATTLE CENTER <b>128.3 269.0</b>	UNICOM <b>122.7 (CTAF)</b> 
------------------------	--------------------------------------	---



ELEV 18	TDZE 16
---------	---------



CATEGORY	A	B	C	D
LPV DA	226-1/2	210 (300-1/2)	286-1/2 270 (300-1/2)	NA
LNAV/VNAV DA	676-1/2		660 (700-1/2)	NA
LNAV MDA	800-1/2 784 (800-1/2)	800-3/4 784 (800-3/4)	800-1 3/4 784 (800-1 3/4)	NA
CIRCLING	800-1 782 (800-1)	800-1 1/4 782 (800-1 1/4)	800-2 1/4 782 (800-2 1/4)	NA

NW-1, 22 FEB 2024 to 21 MAR 2024

NW-1, 22 FEB 2024 to 21 MAR 2024

WAAS CH <b>82015</b> <b>W06A</b>	APP CRS <b>061°</b>	Rwy Idg TDZE Apt Elev	<b>5000</b> <b>18</b> <b>18</b>
--	------------------------	-----------------------------	---------------------------------------

# RNAV (GPS) RWY 6

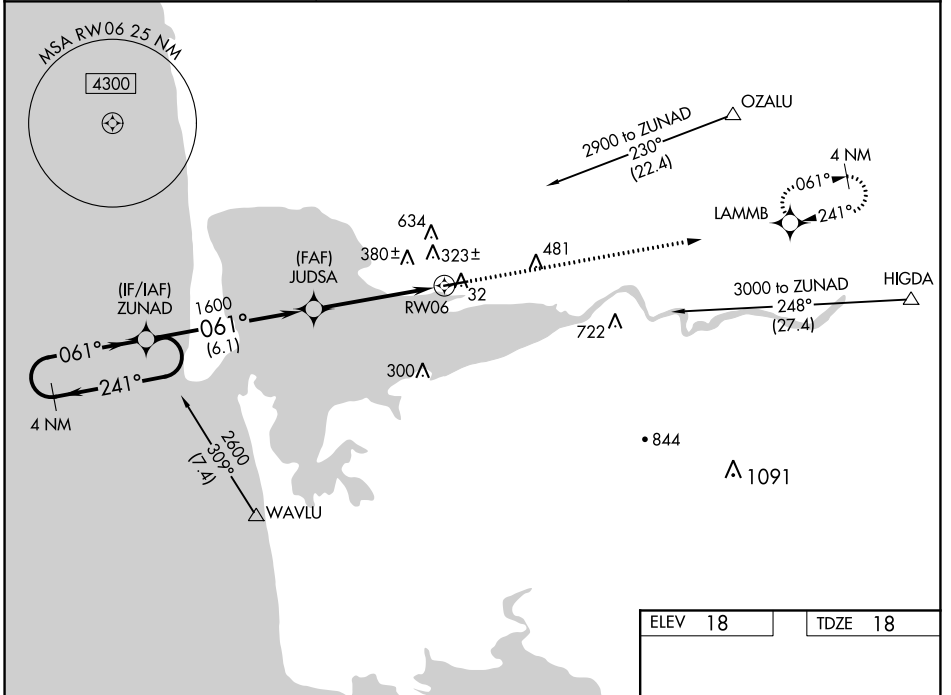
BOWERMAN (HQM)

RNP APCH.

**⚠** Circling NA northwest of Rwy 6-24. For uncompensated Baro-VNAV systems, LNAV/VNAV NA below -15°C (5°F) or above 48°C (118°F). Rwy 6 helicopter visibility reduction below 1 SM NA. When local altimeter setting not received, procedure NA.

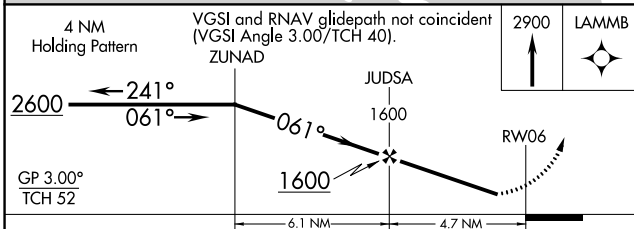
MISSED APPROACH: Climb to 2900 direct LAMMB and hold.

ASOS <b>135.775</b>	SEATTLE CENTER <b>128.3 269.0</b>	UNICOM <b>122.7 (CTAF) 0</b>
------------------------	--------------------------------------	---------------------------------



NW-1, 22 FEB 2024 to 21 MAR 2024

NW-1, 22 FEB 2024 to 21 MAR 2024



ELEV 18	TDZE 18
REIL Rwy 6 0	
HIRL Rwy 6-24 0	

CATEGORY	A	B	C	D
LPV DA	308-1 290 (300-1)			
LNAV/VNAV DA	758-2½ 740 (800-2½)			
LNAV MDA	620-1 602 (700-1)	620-1¾ 602 (700-1¾)	620-2 602 (700-2)	620-2 602 (700-2)
CIRCLING	620-1 602 (700-1)	800-2¼ 782 (800-2¼)	860-2¾ 842 (900-2¾)	

VORTAC HQM <b>117.7</b> Chan <b>124</b>	APP CRS <b>062°</b>	Rwy Idg TDZE Apt Elev	<b>5000</b> <b>18</b> <b>18</b>
---	------------------------	-----------------------------	---------------------------------------

# VOR RWY 6

BOWERMAN (HQM)

DME required.

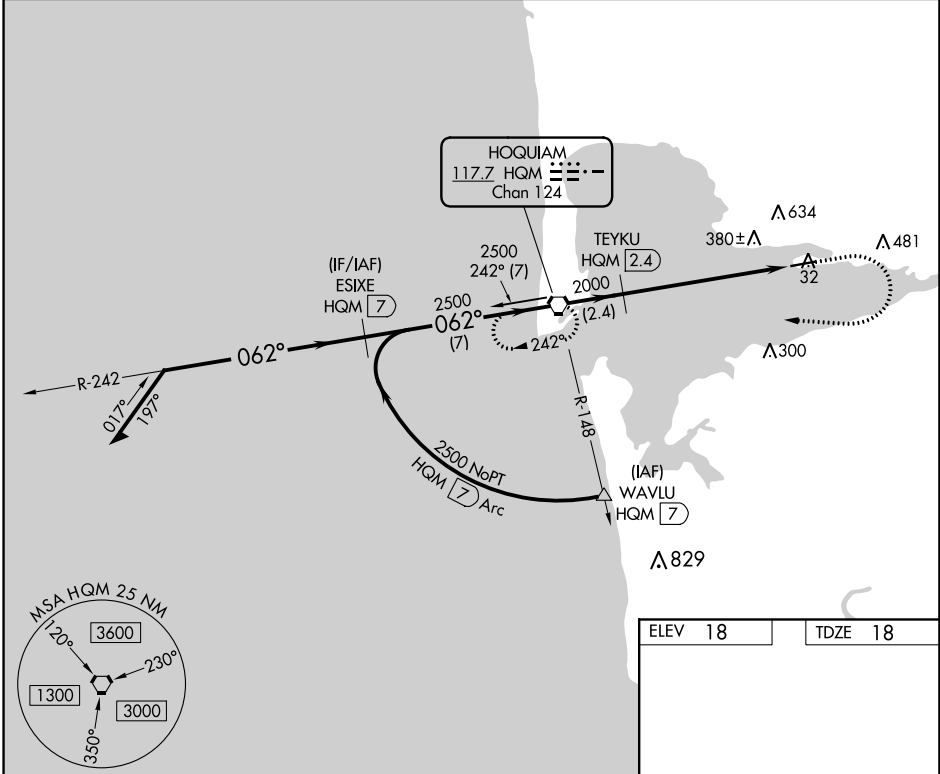
**⚠** Circling NA northwest of Rwy 6-24. Rwy 6 helicopter visibility reduction below 1 SM NA. Straight-in Rwy 6 NA at night, Circling Rwy 6 NA at night.

MISSED APPROACH: Climb to 800 then climbing right turn 2500 direct HQM VORTAC and hold, continue climb-in-hold to 2500.

ASOS  
**135.775**

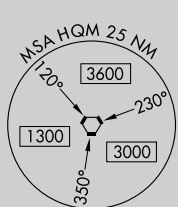
SEATTLE CENTER  
**128.3 269.0**

UNICOM  
**122.7 (CTAF) 0**

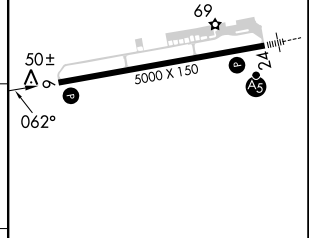
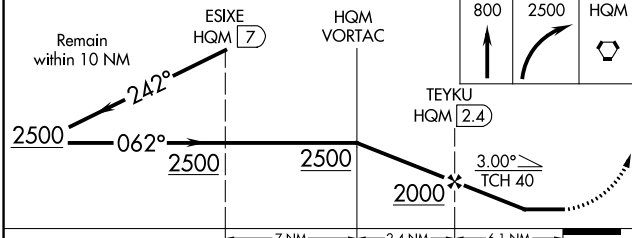


NW-1, 22 FEB 2024 to 21 MAR 2024

NW-1, 22 FEB 2024 to 21 MAR 2024



ELEV 18	TDZE 18
---------	---------



CATEGORY	A	B	C	D
S-6	640-1	622 (700-1)	640-1¾	622 (700-1¾)
CIRCLING	640-1	622 (700-1)	800-2¼ 782 (800-2¼)	840-2¾ 822 (900-2¾)

REIL Rwy 6 0	HIRL Rwy 6-24 0				
FAF to MAP 6.1 NM					
Knots	60	90	120	150	180
Min:Sec	6:06	4:04	3:03	2:26	2:02