

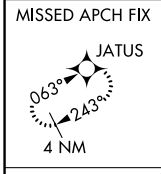
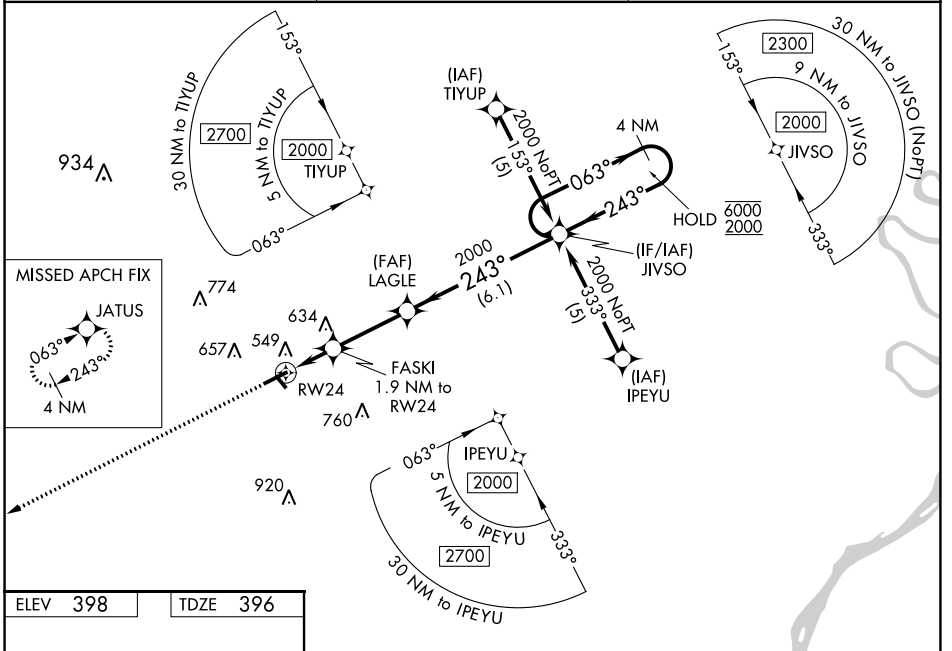
WAAS CH 56519 W24A	APP CRS 243°	Rwy Idg TDZE Apt Elev	5013 396 398
----------------------------------------	------------------------	-----------------------------	-----------------------------------------

RNAV (GPS) RWY 24

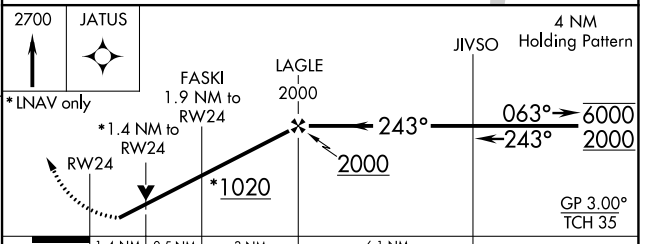
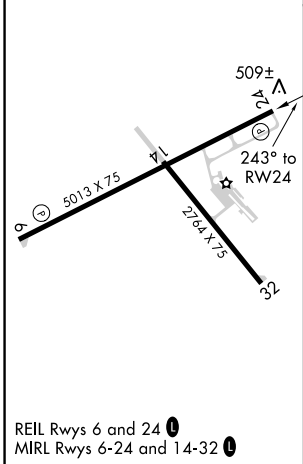
HARRISBURG-RALEIGH (HSB)

RNP APCH.	MISSED APPROACH: Climb to 2700 direct JATUS and hold.
<p>▼ For uncompensated Baro-VNAV systems, LNAV/VNAV NA below -15°C or above 54°C. Rwy 24 helicopter visibility reduction below ¾ SM NA.</p>	

AWOS-3 135.925	KANSAS CITY CENTER 127.475 346.275	UNICOM 122.8 (CTAF) 0
--------------------------	----------------------------------------------	---------------------------------



ELEV 398	TDZE 396
----------	----------



CATEGORY	A	B	C	D
LPV DA	697-1 301 (300-1)			
LNAV/VNAV DA	859-1¾ 463 (500-1¾)			
LNAV MDA	880-1	484 (500-1)	880-1¼ 484 (500-1¼)	880-1½ 484 (500-1½)
CIRCLING	880-1 482 (500-1)	1020-1 622 (700-1)	1020-1¾ 622 (700-1¾)	1020-2 622 (700-2)

EC-3, 28 JAN 2021 to 25 FEB 2021

EC-3, 28 JAN 2021 to 25 FEB 2021

REIL Rwy 6 and 24
MIRL Rwy 6-24 and 14-32

WAAS CH 63119 W06A	APP CRS 063°	Rwy Idg TDZE Apt Elev	5013 394 398
----------------------------------------	------------------------	-----------------------------	-----------------------------------------

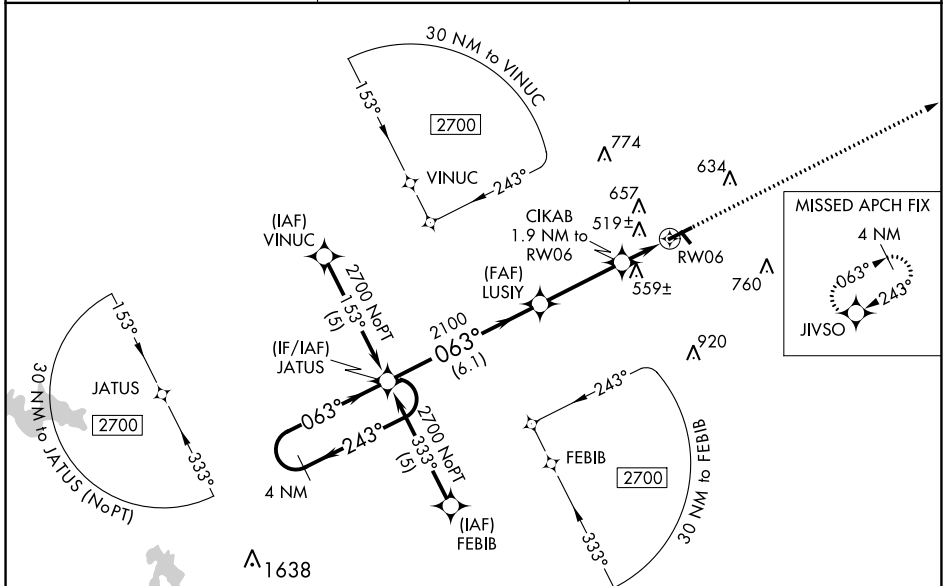
RNAV (GPS) RWY 6

HARRISBURG-RALEIGH (HSB)

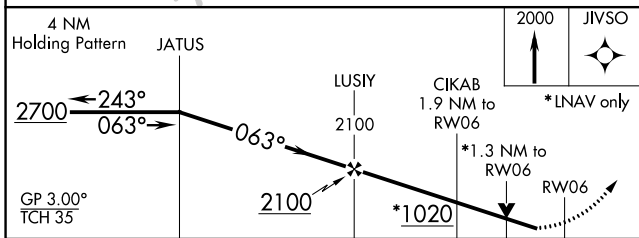
⚠ Baro-VNAV NA when using Williamson County Rgnl altimeter setting. For uncompensated Baro-VNAV systems, LNAV/VNAV NA below -15°C (5°F) or above 48°C (118°F). DME/DME RNP-0.3 NA. Visibility reduction by helicopters NA. When local altimeter setting not received, use Williamson County Rgnl altimeter setting and increase all DA 62 feet and all MDA 80 feet; increase LPV all Cats, LNAV/VNAV all Cats, LNAV Cats C and D and Circling Cats C and D visibility ¼ mile. VDP NA with Williamson County Rgnl altimeter setting.

MISSED APPROACH:
Climb to 2000 direct JIVSO and hold.

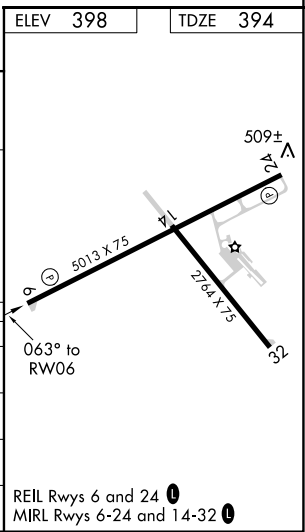
AWOS-3 135.925	KANSAS CITY CENTER 127.475 346.275	UNICOM 122.8 (CTAF) 0
--------------------------	----------------------------------------------	---------------------------------



ELEV 398	TDZE 394
-----------------	-----------------



CATEGORY	A	B	C	D
LPV DA		682-1	288 (300-1)	
LNAV/VNAV DA		958-2	564 (600-2)	
LNAV MDA	820-1	426 (500-1)	820-1¼	426 (500-1¼)
CIRCLING	880-1 482 (500-1)	1020-1 622 (700-1)	1020-1¾ 622 (700-1¾)	1020-2 622 (700-2)



EC-3, 28 JAN 2021 to 25 FEB 2021

EC-3, 28 JAN 2021 to 25 FEB 2021