

WAAS CH 65612 W14A	APP CRS 143°	Rwy Idg TDZE 1961 Apt Elev 1961
--	------------------------	---

RNAV (GPS) RWY 14

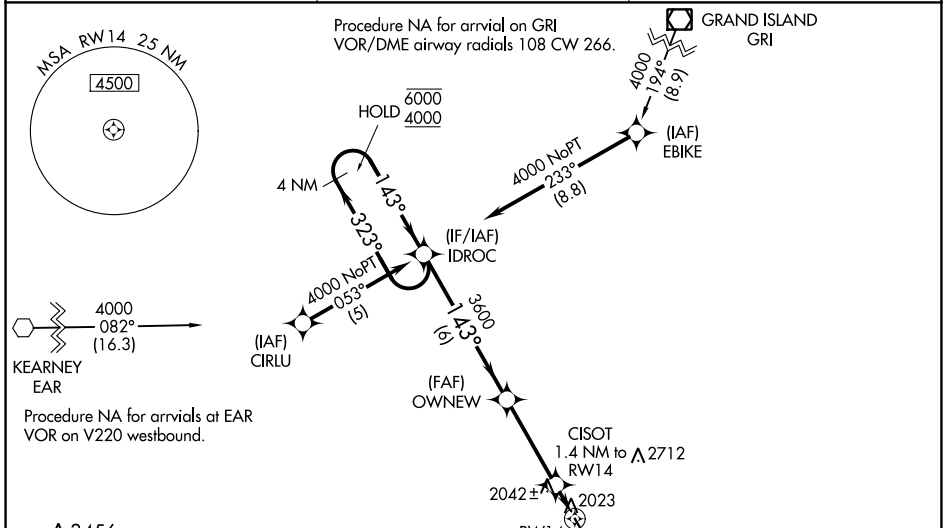
HASTINGS MUNI (HSI)

RNP APCH.

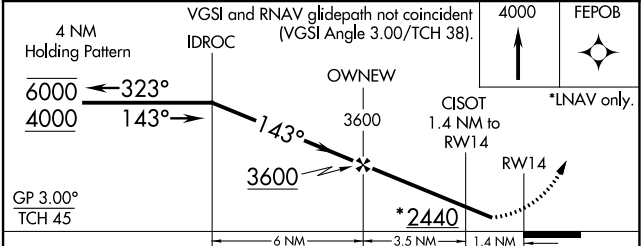
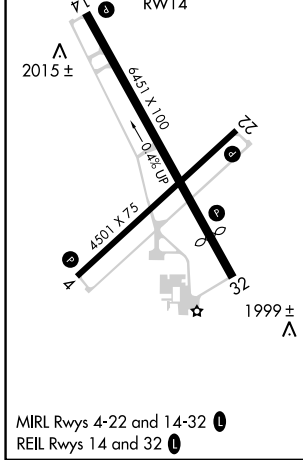
⚠ Rwy 14 helicopter visibility reduction below 3/4 SM NA. For uncompensated Baro-VNAV systems, procedure NA below -18°C or above 54°C. Circling NA for Cat D east of Rwy 14-32.

MISSED APPROACH: Climb to 4000 direct FEPOB and hold.

ASOS 120.525	MINNEAPOLIS CENTER 119.4 278.8	UNICOM 122.8 (CTAF) 0
------------------------	--	---------------------------------



ELEV 1961	D	TDZE 1961
-----------	----------	-----------



CATEGORY	A	B	C	D
LPV DA		2220-1	259 (300-1)	
LNAV/VNAV DA		2280-1	319 (400-1)	
LNAV MDA		2300-1	339 (400-1)	
C CIRCLING	2380-1 419 (500-1)	2540-1 579 (600-1)	2540-1½ 579 (600-1½)	2540-2 579 (600-2)

NC-2, 22 FEB 2024 to 21 MAR 2024

NC-2, 22 FEB 2024 to 21 MAR 2024

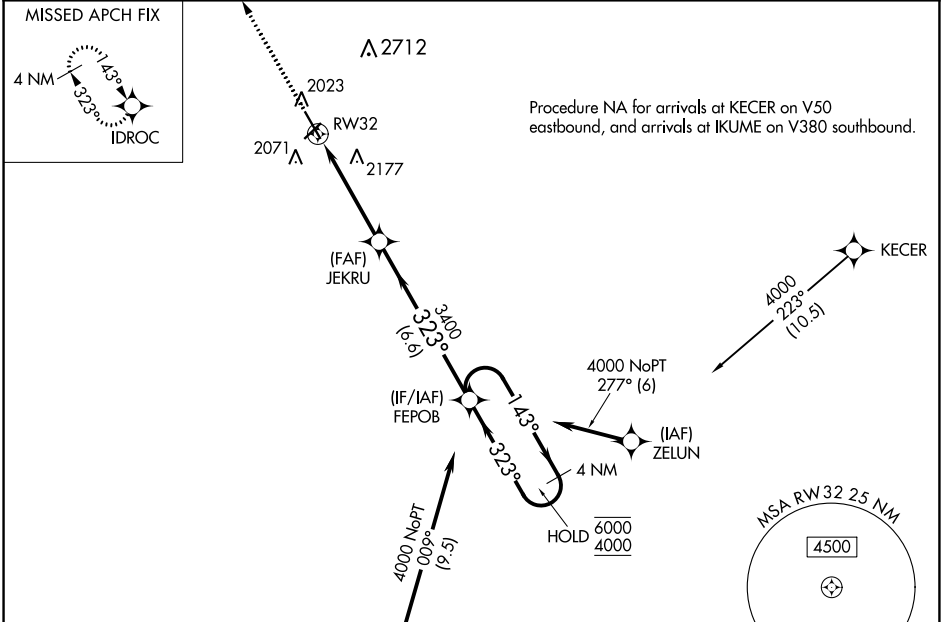
WAAS CH 63223 W32A	APP CRS 323°	Rwy Idg TDZE 1944 Apt Elev 1961
--	------------------------	---

RNAV (GPS) RWY 32

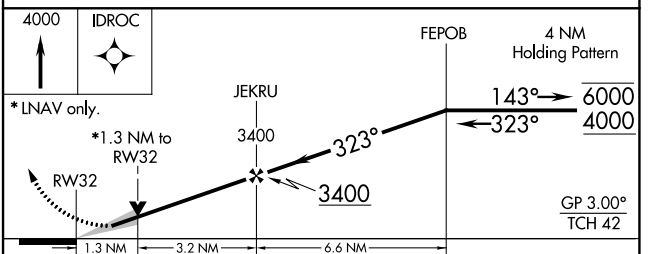
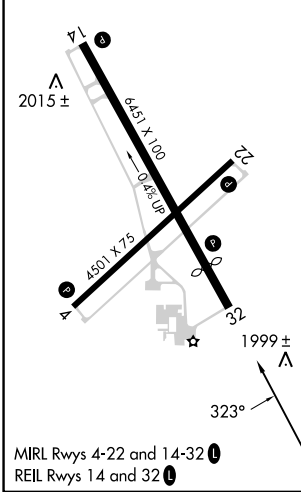
HASTINGS MUNI (HSI)

RNP APCH.	MISSED APPROACH: Climb to 4000 direct IDROC and hold.
<p>⚠ For uncompensated Baro-VNAV systems, LNAV/VNAV NA below -18°C or above 54°C. Circling NA for Cat D east of Rwy 14-32.</p>	

ASOS 120.525	MINNEAPOLIS CENTER 119.4 278.8	UNICOM 122.8 (CTAF) 1
------------------------	--	---------------------------------



ELEV 1961	D	TDZE 1944
-----------	----------	-----------



CATEGORY	A	B	C	D
LPV DA		2194-7/8	250 (300-7/8)	
LNAV/VNAV DA		2386-1 3/8	442 (500-1 3/8)	
LNAV MDA	2380-1	436 (500-1)	2380-1 1/4	436 (500-1 1/4)
C CIRCLING	2380-1 419 (500-1)	2540-1 579 (600-1)	2540-1 1/2 579 (600-1 1/2)	2540-2 579 (600-2)

NC-2, 22 FEB 2024 to 21 MAR 2024

NC-2, 22 FEB 2024 to 21 MAR 2024

WAAS CH 66023 W04A	APP CRS 040°	Rwy Idg TDZE Apt Elev	4501 1944 1961
--	------------------------	-----------------------------	---

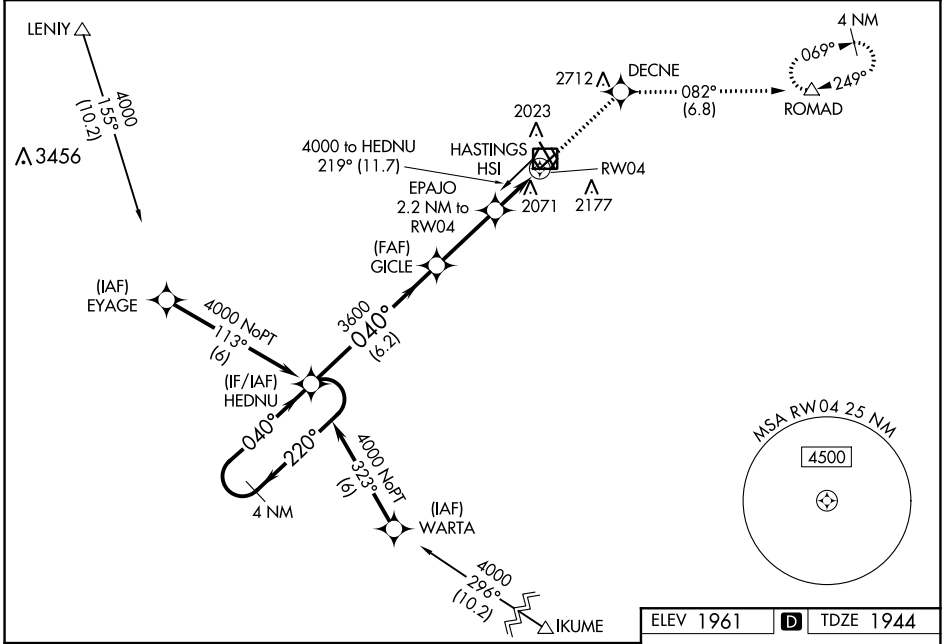
RNAV (GPS) RWY 4

HASTINGS MUNI (HSI)

⚠ For uncompensated Baro-VNAV systems, LNAV/VNAV NA below -18°C (0°F) or above 54°C (130°F). DME/DME RNP-0.3 NA. When local altimeter setting not received, use Grand Island altimeter setting and increase all DAs/MDAs 80 feet, and visibility Circling Cat C ¼ SM. Baro-VNAV and VDP NA when using Grand Island altimeter setting.

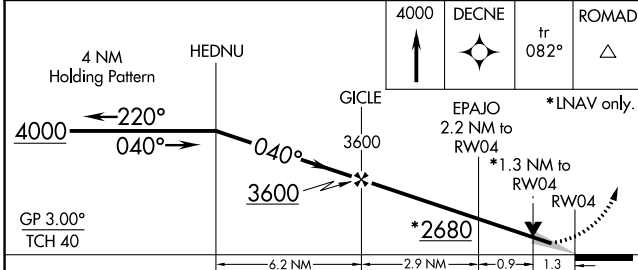
MISSED APPROACH: Climb to 4000 direct DECNE and on track 082° to ROMAD and hold.

ASOS 120.525	MINNEAPOLIS CENTER 119.4 278.8	UNICOM 122.8 (CTAF)
------------------------	--	-------------------------------



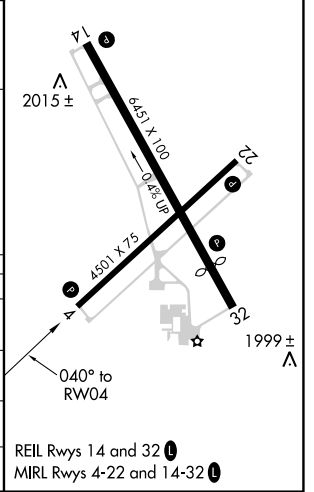
NC-2, 22 FEB 2024 to 21 MAR 2024

NC-2, 22 FEB 2024 to 21 MAR 2024



ELEV 1961	D TDZE 1944
-----------	--------------------

CATEGORY	A	B	C	D
LPV DA	2194-1	250 (300-1)		NA
LNAV/VNAV DA	2267-1½	323 (400-1½)		NA
LNAV MDA	2380-1	436 (500-1)	2380-1½ 436 (500-1½)	NA
C CIRCLING	2380-1 419 (500-1)	2540-1 579 (600-1)	2540-1½ 579 (600-1½)	NA



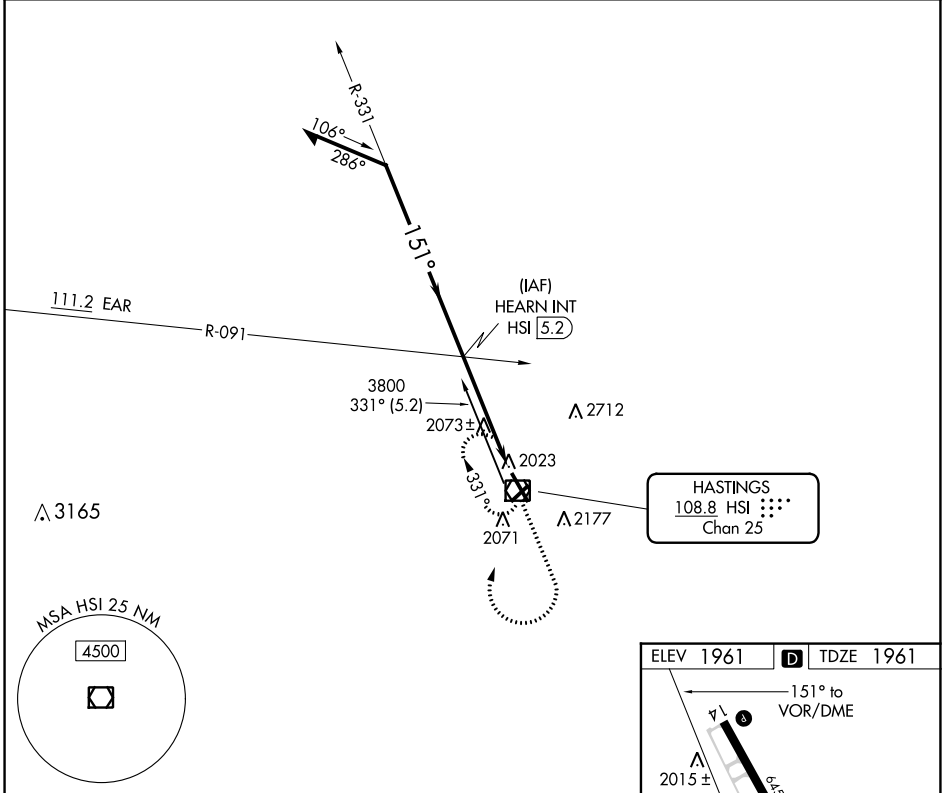
VOR/DME HSI 108.8 Chan 25	APP CRS 151°	Rwy Idg TDZE Apt Elev	5500 1961 1961
--	------------------------	-----------------------------	---

VOR RWY 14
HASTINGS MUNI (HSI)

▼ Circling NA for Cat D east of Rwy 14 and 32.
Rwy 14 helicopter visibility reduction below 3/4 SM NA.

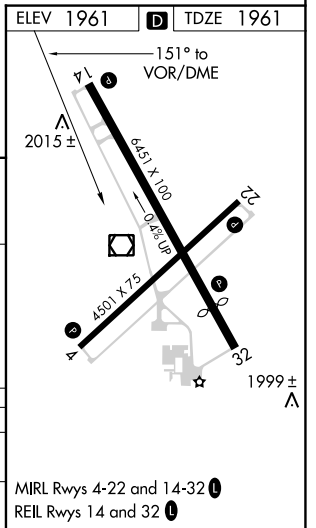
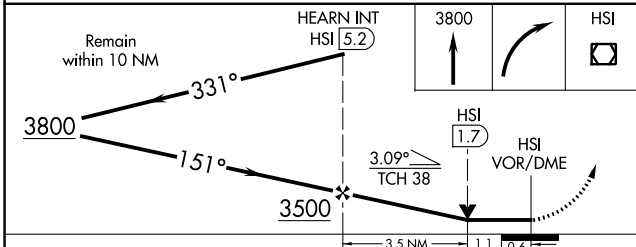
MISSED APPROACH: Climb to 3800 then right turn direct HSI VOR/DME and hold.

ASOS 120.525	MINNEAPOLIS CENTER 119.4 278.8	UNICOM 122.8 (CTAF) 0
------------------------	--	---------------------------------



NC-2, 22 FEB 2024 to 21 MAR 2024

NC-2, 22 FEB 2024 to 21 MAR 2024



CATEGORY	A	B	C	D
S-14	2360-1	399 (400-1)	2360-1 1/8	399 (400-1 1/8)
C CIRCLING	2380-1 419 (500-1)	2540-1 579 (600-1)	2540-1 1/2 579 (600-1 1/2)	2540-2 579 (600-2)

VOR/DME HSI 108.8 Chan 25	APP CRS 314°	Rwy Idg TDZE 1944 Apt Elev 1961
---	------------------------	---

VOR RWY 32

HASTINGS MUNI (HSI)

⚠ When VGSI inop, procedure NA at night. Visibility reduction by helicopters NA.
⚠ When local altimeter setting not received, use Grand Island altimeter setting and increase all MDAs 80 feet and Cat C/D visibility ¼ SM. Circling NA for Cat D east of Rwy 14/32.

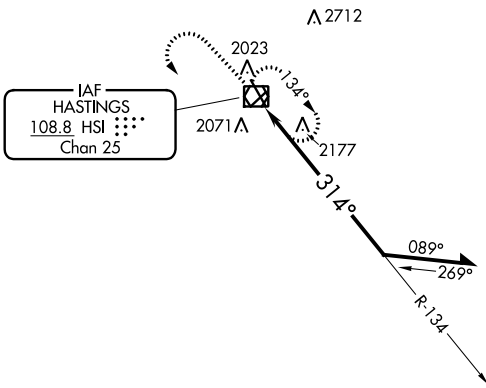
MISSED APPROACH: Climb to 3800 then left turn direct HSI VOR/DME and hold.

ASOS
120.525

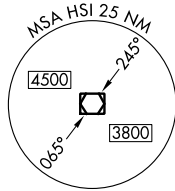
MINNEAPOLIS CENTER
119.4 278.8

UNICOM
122.8 (CTAF) 0

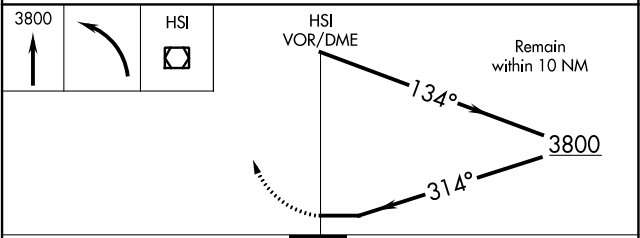
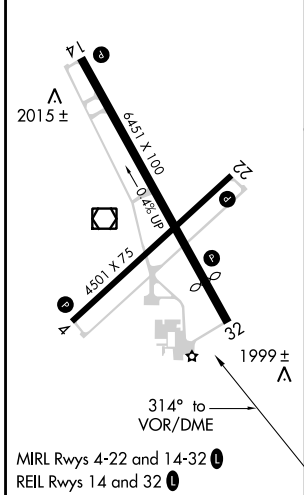
3048 **△**



IAF
HASTINGS
108.8 HSI **⋮⋮⋮**
Chan 25



ELEV 1961 **D** TDZE 1944



CATEGORY	A	B	C	D
S-32	2560-1	616 (600-1)	2560-1¾	616 (600-1¾)
CIRCLING	2560-1	599 (600-1)	2560-1¾	2560-2 599 (600-2)

NC-2, 22 FEB 2024 to 21 MAR 2024

NC-2, 22 FEB 2024 to 21 MAR 2024