

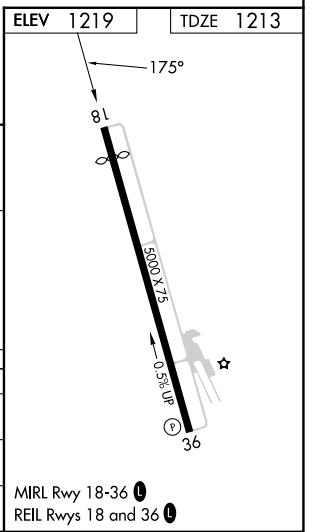
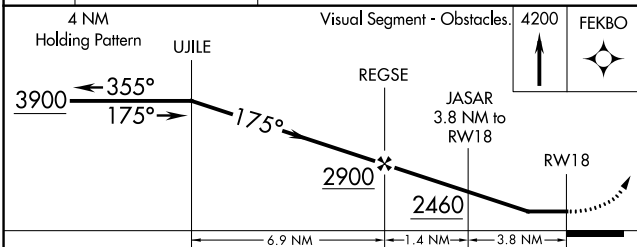
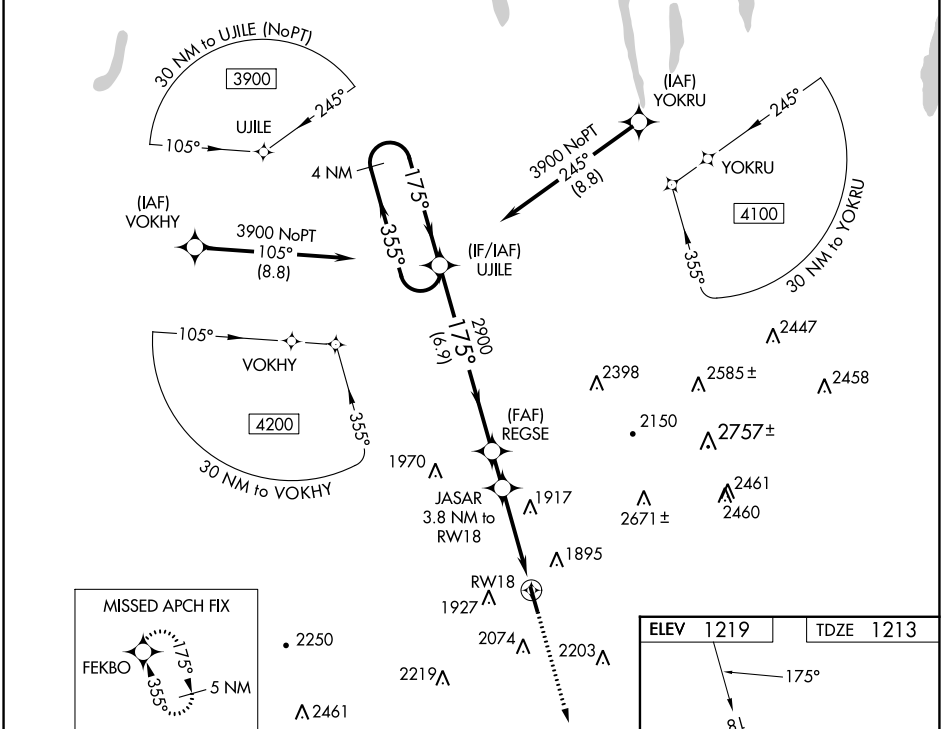
WAAS CH <b>50425</b> <b>W18A</b>	APP CRS <b>175°</b>	Rwy Idg TDZE Apt Elev	<b>4500</b> <b>1213</b> <b>1219</b>
--	------------------------	-----------------------------	---

# RNAV (GPS) RWY 18

HORNELL MUNI (HTF)

RNP APCH - GPS	<p>When local altimeter setting not received, use Dansville altimeter setting and increase all MDA 120 feet. Procedure NA at night. Helicopter visibility reduction below 1 SM NA.</p>	MISSED APPROACH: Climb to 4200 direct FEKBO and hold.
----------------	--	---

AWOS-3 <b>118.475</b>	CLEVELAND CENTER <b>124.325 353.85</b>	UNICOM <b>122.7 (CTAF) 0</b>
--------------------------	---	---------------------------------



CATEGORY	A	B	C	D
LP MDA	2200-1¼ 987 (1000-1¼)	2200-1½ 987 (1000-1½)	2200-3 987 (1000-3)	NA
LNAV MDA	2240-1¼ 1027 (1100-1¼)	2240-1½ 1027 (1100-1½)	2240-3 1027 (1100-3)	NA
CIRCLING	2360-1¼ 1140 (1200-1¼)	2380-1½ 1161 (1200-1½)	2440-3 1220 (1300-3)	NA

NE-2, 22 FEB 2024 to 21 MAR 2024

NE-2, 22 FEB 2024 to 21 MAR 2024

WAAS CH <b>97625</b> <b>W36A</b>	APP CRS <b>355°</b>	Rwy Idg TDZE <b>1195</b> Apt Elev <b>1219</b>	<b>5000</b>
--	------------------------	---	-------------

# RNAV (GPS) RWY 36

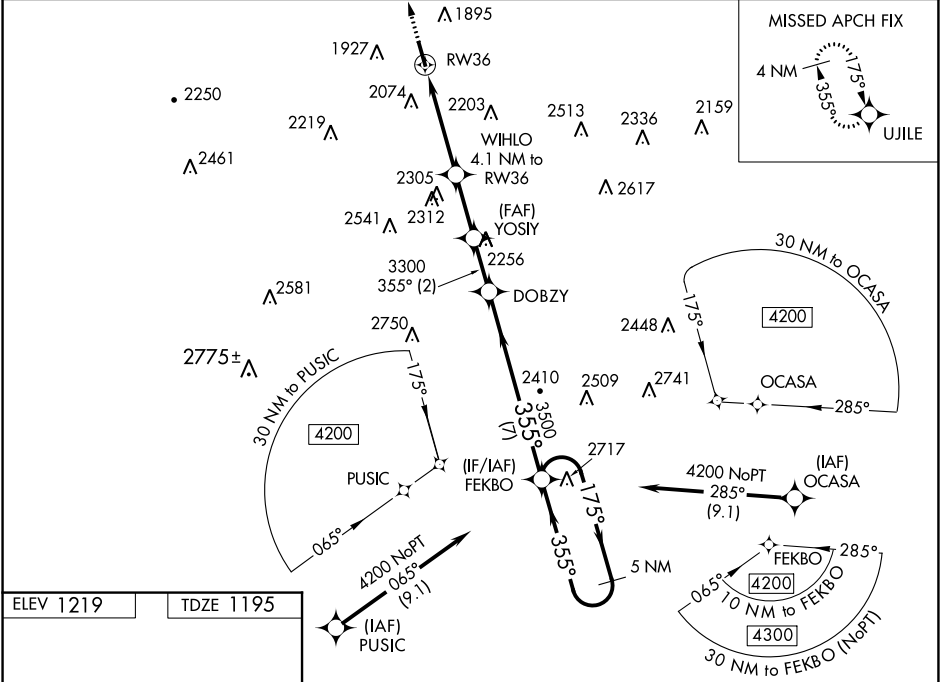
HORNELL MUNI (HTF)

RNP APCH - GPS

**▽** For uncompensated Baro-VNAV systems, LNAV/VNAV NA below -17°C or above 54°C. Helicopter visibility reduction below 3/4 SM NA. When local altimeter setting not received, use Dansville altimeter setting and increase all DA 105 feet, all MDA 120 feet and LPV all Cats visibility 3/8 mile, LNAV/VNAV all Cats visibility 1 mile, and LNAV Cat B visibility 1/2 mile and Cat C visibility 1/2 mile. VDP and Baro-VNAV NA with Dansville altimeter setting. Circling Rwy 18 NA at night.

**MISSED APPROACH:**  
Climb to 3900 direct UJILE and hold.

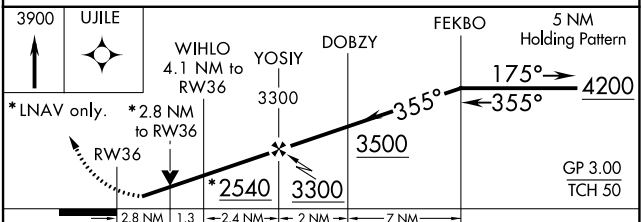
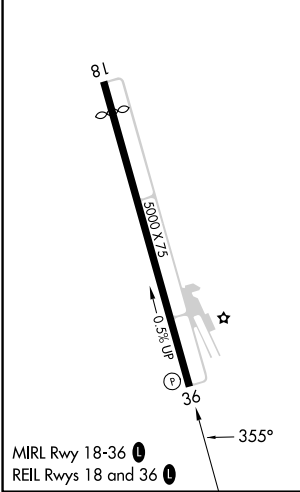
AWOS-3 <b>118.475</b>	CLEVELAND CENTER <b>124.325 353.85</b>	UNICOM <b>122.7 (CTAF) 0</b>
--------------------------	---	---------------------------------



NE-2, 22 FEB 2024 to 21 MAR 2024

NE-2, 22 FEB 2024 to 21 MAR 2024

ELEV 1219	TDZE 1195
-----------	-----------



CATEGORY	A	B	C	D
LPV DA	1660-1½		465 (500-1½)	NA
LNAV/ VNAV DA	2343-4		1148 (1200-4)	NA
LNAV MDA	2120-1¼	925 (900-1¼)	2120-2½ 925 (900-2½)	NA
CIRCLING	2360-1¼ 1141 (1200-1¼)	2380-1½ 1161 (1200-1½)	2440-3 1221 (1300-3)	NA