

WAAS CH 82221 W26A	APP CRS 259°	Rwy Idg TDZE 564 Apt Elev 564
--	------------------------	---

RNAV (GPS) RWY 26

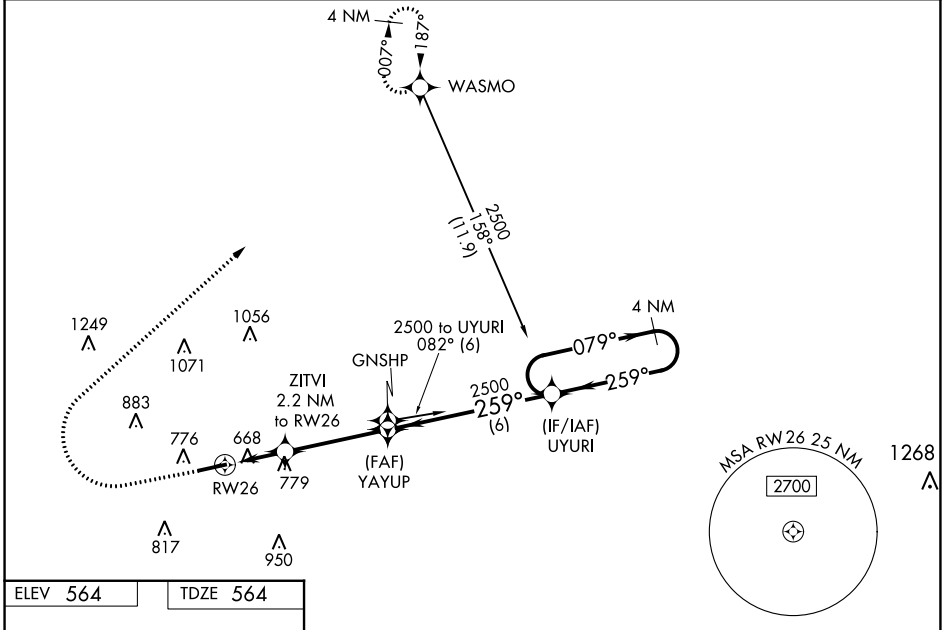
HOPKINSVILLE-CHRISTIAN COUNTY (HVC)

RNP APCH - GPS.

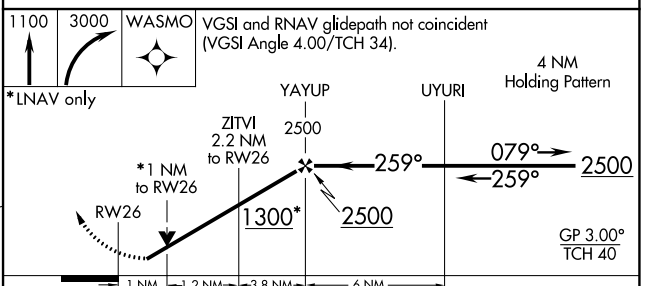
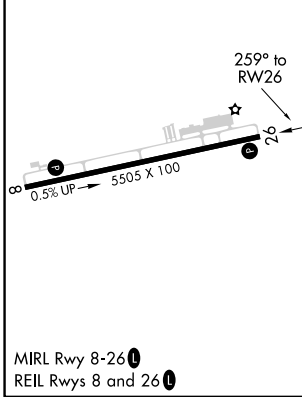
NA Circling Rwy 8 NA at night. For uncompensated Baro-VNAV systems, LNAV/VNAV NA below -16°C or above 54°C. Baro-VNAV and VDP NA when using Clarksville altimeter setting. Helicopter visibility reduction below 3/4 SM NA. When local altimeter setting not received, use Clarksville altimeter setting and increase LPV DA to 851 feet and all visibilities 1/8 SM; increase LNAV/VNAV DA to 1033 feet and all visibilities 1/8 SM; increase all MDAs 40 feet and Circling visibility Cat C 1/4 SM.

MISSED APPROACH:
Climb to 1100 then climbing right turn to 3000 direct WASMO and hold.

AWOS-3 132.575	CAMPBELL APP CON 118.1 269.525	UNICOM 122.8 (CTAF)
--------------------------	--	-------------------------------



ELEV 564	TDZE 564
----------	----------



CATEGORY	A	B	C	D
LPV DA		814-3/4	250 (300-3/4)	
LNAV/VNAV DA		996-1 1/4	432 (500-1 1/4)	
LNAV MDA	1040-1	476 (500-1)	1040-1 3/8	476 (500-1 3/8)
C CIRCLING	1140-1	576 (600-1)	1280-2 716 (800-2)	1320-2 1/2 756 (800-2 1/2)

SE-1, 22 FEB 2024 to 21 MAR 2024

SE-1, 22 FEB 2024 to 21 MAR 2024

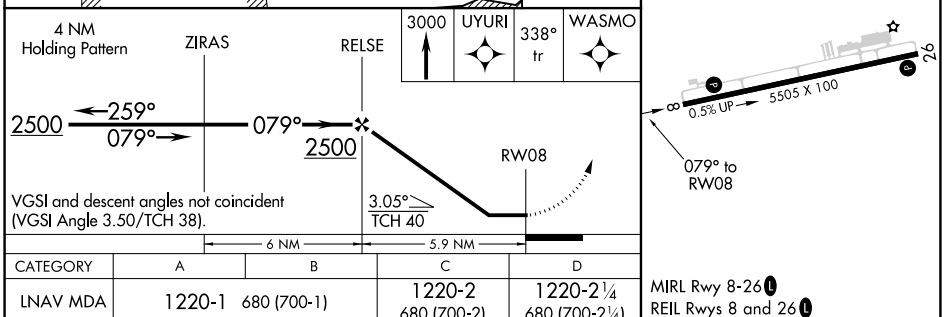
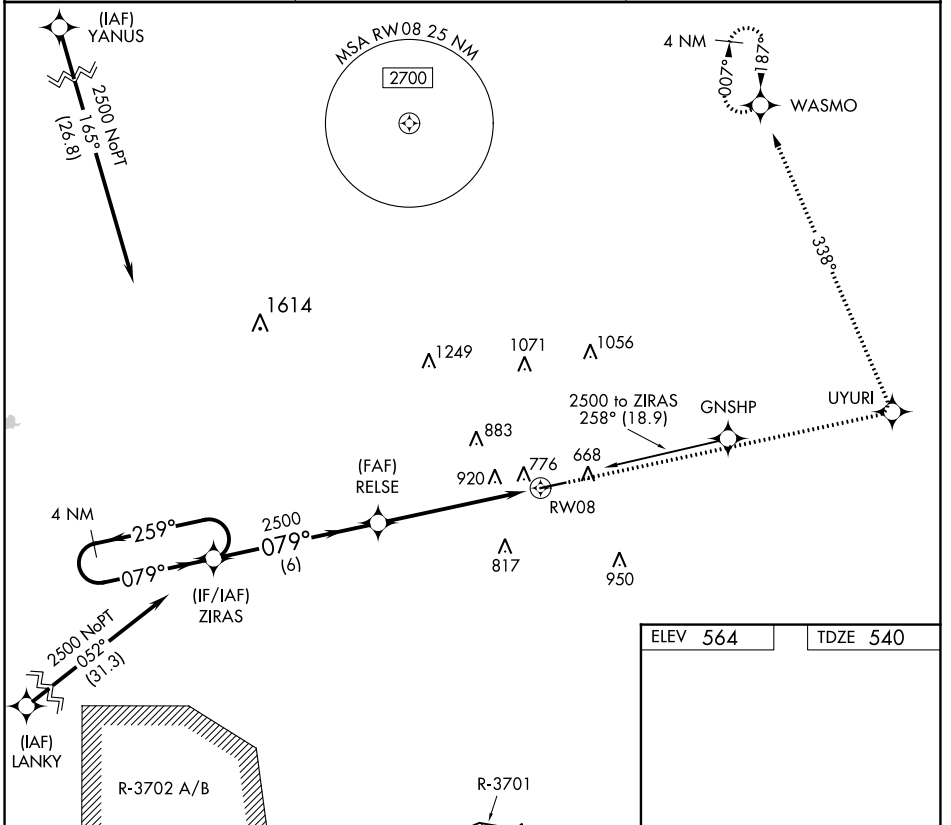
APP CRS	Rwy Idg	5505
079°	TDZE	540
	Apt Elev	564

RNAV (GPS) RWY 8

HOPKINSVILLE-CHRISTIAN COUNTY (HVC)

RNP APCH.	MISSED APPROACH: Climb to 3000 direct UYURI and left turn via 338° track to WASMO and hold.
<p>▼ Rwy 8 helicopter visibility reduction below 1 SM NA. When local altimeter setting not received, use Clarksville altimeter setting and increase all MDA 40 feet. Procedure NA at night.</p> <p>▲ NA</p>	

AWOS-3 132.575	CAMPBELL APP CON 118.1 269.525	UNICOM 122.8 (CTAF) 0
--------------------------	--	---------------------------------



CATEGORY	A	B	C	D	MIRL Rwy 8-26 REIL Rwy 8 and 26
LNAV MDA	1220-1	680 (700-1)	1220-2 680 (700-2)	1220-2 1/4 680 (700-2 1/4)	

SE-1, 22 FEB 2024 to 21 MAR 2024

SE-1, 22 FEB 2024 to 21 MAR 2024