

ALEXANDRIA THREE DEPARTURE
 (AEX3.AEX) 07OCT21

ALEXANDRIA THREE DEPARTURE
 (AEX3.AEX) 21280

AL-5461 (FAA)

GEORGE BUSH INTCNL/HOUSTON (IAH)
 HOUSTON, TEXAS

D-ATIS
 124.05
 CLNC DEL
 128.1
 CPDLC
 GND CON
 118.575 (Rwys 8L/R, 9, 26L/R, 27)
 121.7 (Rwys 15L/R, 33L/R)
 HOUSTON TOWER
 120.725 290.2 (Rwys 8L/26R)
 125.35 290.2 (Rwys 8R/26L)
 127.3 288.25 (Rwys 15L/R, 33L/R)
 135.15 290.2 (Rwys 9/27)
 HOUSTON DEP CON
 132.25 285.425

MUSIQ
 N30°33.17'
 W94°53.53'

DARTR
 N30°24.19'
 W95°00.41'

LUFKIN
 112.1 LFK
 Chan 58

COSGO
 N31°13.26'
 W93°27.16'

ALEXANDRIA
 116.1 AEX
 Chan 108
 N31°15.40'
 W92°30.06'

VELCO
 N31°10.67'
 W94°24.55'
 10000

V212
 J50

V212
 J50

POLK
 108.4 FXU
 Chan 114

DAISETTA
 116.9 DAS
 Chan 116

MC COMB
 116.7 MCB
 Chan 114
 N31°18.27'
 W90°15.49'
 L-21-22, H-6

CRESTVIEW
 115.9 CEW
 Chan 106
 N30°49.57'
 W86°40.75'
 L-21-22, H-6

RAECN
 N30°05.08'
 W95°14.95'

HUMBLE
 116.6 IAH
 Chan 113

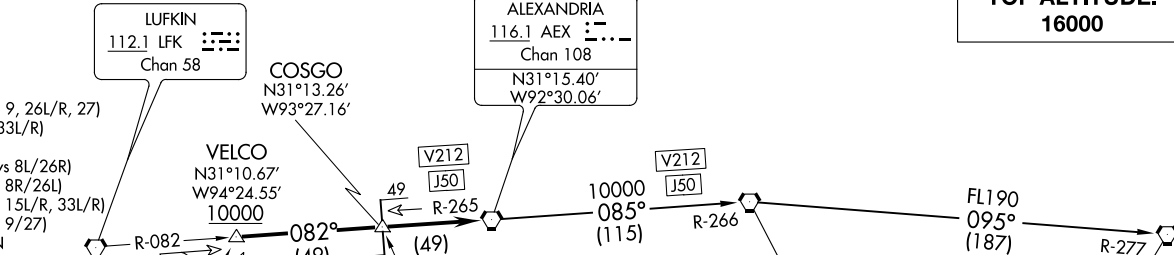


TAKEOFF MINIMUMS

Rwys 8L/R, 9, 15L/R, 26L/R, 27, 33L/R: Standard.

NOTE: RADAR required.
 NOTE: The following TRANSITIONS are ATC assigned only. Do not file.
 CRESTVIEW TRANSITION: (For aircraft being weather rerouted to join a jet route off CEW VORTAC or overflying CEW VORTAC to join a direct route).
 MC COMB TRANSITION: (For aircraft being weather rerouted to join a jet route off MCB VORTAC or overflying MCB VORTAC to join a direct route).

**TOP ALTITUDE:
 16000**



NOTE: Chart not to scale.

(NARRATIVE ON FOLLOWING PAGE)

HOUSTON, TEXAS
 GEORGE BUSH INTCNL/HOUSTON (IAH)

ALEXANDRIA THREE DEPARTURE



DEPARTURE ROUTE DESCRIPTION

TAKEOFF ALL RUNWAYS: Climb on assigned heading for RADAR vectors to RAECN INT, maintain 16000. Expect filed altitude 10 minutes after departure, thence. . . .

. . . .on IAH R-028 to VELCO INT, cross VELCO INT at or above 10000, then right turn on LFK R-082 and AEX R-265 to AEX VORTAC.

CRESTVIEW TRANSITION (AEX3.CEW): From over AEX VORTAC on AEX R-085 and MCB R-266 to MCB VORTAC, then on MCB R-095 and CEW R-277 to CEW VORTAC.

MC COMB TRANSITION (AEX3.MCB): From over AEX VORTAC on AEX R-085 and MCB R-266 to MCB VORTAC.

SC-5, 22 FEB 2024 to 21 MAR 2024

SC-5, 22 FEB 2024 to 21 MAR 2024

(BLTWY7.BLTWY) 21280

GEORGE BUSH INTCNTL/HOUSTON (IAH)

BLTWY SEVEN DEPARTURE (RNAV) AL-5461 (FAA)

HOUSTON, TEXAS

D-ATIS
 124.05
 CLNC DEL
 128.1
 CPDLC
 GND CON
 118.575 (Rwys 8L/R, 26L/R, 9/27)
 121.7 (Rwys 15L/R, 33L/R)
 HOUSTON TOWER
 120.725 290.2 (Rwys 8L/26R)
 125.35 290.2 (Rwys 8R/26L)
 127.3 288.25 (Rwys 15L/R, 33L/R)
 135.15 290.2 (Rwys 9/27)
 HOUSTON DEP CON
 132.25 285.425

**TOP ALTITUDE:
 16000**

NOTE: RADAR required.
 NOTE: DME/DME/IRU or GPS required.
 NOTE: RNAV 1.

TAKEOFF MINIMUMS

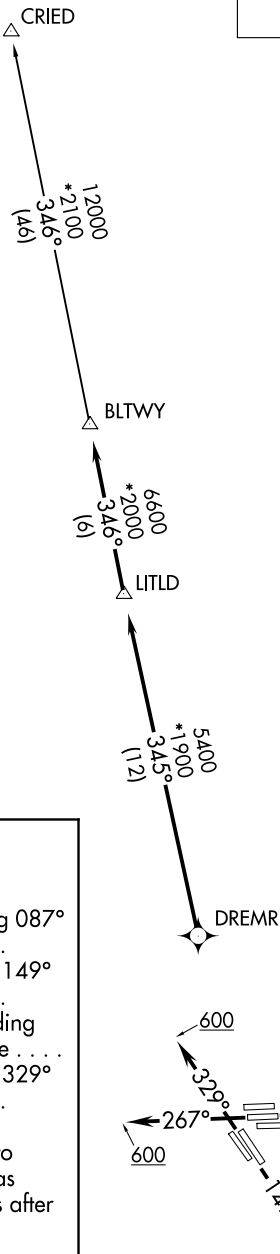
Rwys 8L/R, 9, 15L/R, 26L/R, 27, 33L/R:
 Standard with minimum climb of 500' per NM to 600.

DEPARTURE ROUTE DESCRIPTION

TAKEOFF RUNWAYS 8L/R, 9: Climb on heading 087° to 600 for RADAR vectors to DREMR, thence
TAKEOFF RUNWAYS 15L/R: Climb on heading 149° to 600 for RADAR vectors to DREMR, thence
TAKEOFF RUNWAYS 26L/R, 27: Climb on heading 267° to 600 for RADAR vectors to DREMR, thence
TAKEOFF RUNWAYS 33L/R: Climb on heading 329° to 600 for RADAR vectors to DREMR, thence

. . . . on track 345° to LITLD, then on track 346° to BLTWY, then on (transition). Maintain 16000 or as assigned by ATC. Expect filed altitude 10 minutes after departure.

CRIED TRANSITION (BLTWY7.CRIED)



NOTE: Chart not to scale.

BLTWY SEVEN DEPARTURE (RNAV)

HOUSTON, TEXAS

(BLTWY7.BLTWY) 07OCT21

GEORGE BUSH INTCNTL/HOUSTON (IAH)

SC-5, 22 FEB 2024 to 21 MAR 2024

SC-5, 22 FEB 2024 to 21 MAR 2024

TOP ALTITUDE:
16000

TAKEOFF MINIMUMS

Rwys 15L/R, 26L/R, 27, 33L/R: Standard with minimum climb of 500' per NM to 1200.

NOTE: RADAR required.

NOTE: DME/DME/IRU or GPS required.

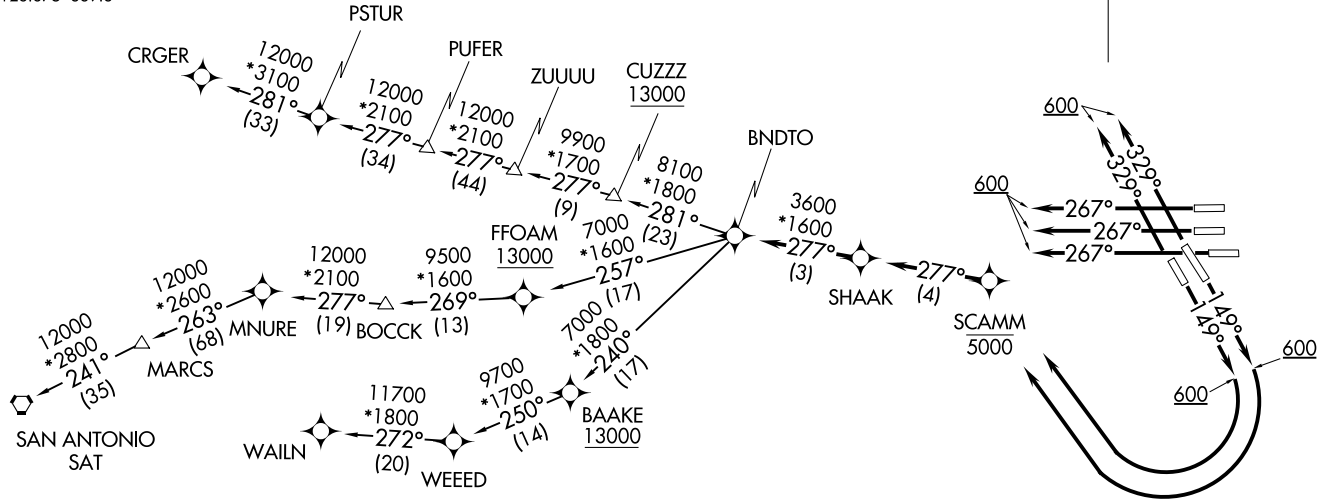
NOTE: RNAV 1.

NOTE: For use during west flow at IAH, for east flow file the PITZZ DEPARTURE.

- D-ATIS 124.05
- CLNIC DEL 128.1
- CPDLC
- GND CON 118.575 (Rwys 8L/R, 26L/R, 9, 27)
- 121.7 (Rwys 15L/R, 33L/R)
- HOUSTON TOWER 120.725 290.2 (Rwys 8L, 26R)
- 125.35 290.2 (Rwys 8R, 26L)
- 127.3 288.25 (Rwys 15L/R, 33L/R)
- 135.15 290.2 (Rwys 9, 27)
- HOUSTON DEP CON 126.675 339.8

BNDTO FIVE DEPARTURE (RNAV)
(BNDT05, BNDTO) 10DECI5

GEORGE BUSH INTCNL/HOUSTON (IAH)
HOUSTON, TEXAS



(BNDT05, BNDTO) 21112
BNDTO FIVE DEPARTURE (RNAV)

AL-5461 (FAA)

GEORGE BUSH INTCNL/HOUSTON (IAH)
HOUSTON, TEXAS

(NARRATIVE ON FOLLOWING PAGE)

NOTE: Chart not to scale.



DEPARTURE ROUTE DESCRIPTION

TAKEOFF RUNWAYS 15L/R: Climb heading 149° to 600, then right turn direct to cross SCAMM at or below 5000, then on track 277° to SHAAK, thence

TAKEOFF RUNWAYS 26L/R, 27: Climb heading 267° to 600, expect RADAR vectors to SHAAK, thence

TAKEOFF RUNWAYS 33L/R: Climb heading 329° to 600, expect RADAR vectors to SHAAK, thence

. . . . on track 277° to BNDTO, then on (transition). Maintain 16000.
Expect filed altitude 10 minutes after departure.

CRGER TRANSITION (BNDTO5.CRGER)

MNURE TRANSITION (BNDTO5.MNURE)

SAN ANTONIO TRANSITION (BNDTO5.SAT)

WAILN TRANSITION (BNDTO5.WAILN)

SC-5, 22 FEB 2024 to 21 MAR 2024

SC-5, 22 FEB 2024 to 21 MAR 2024

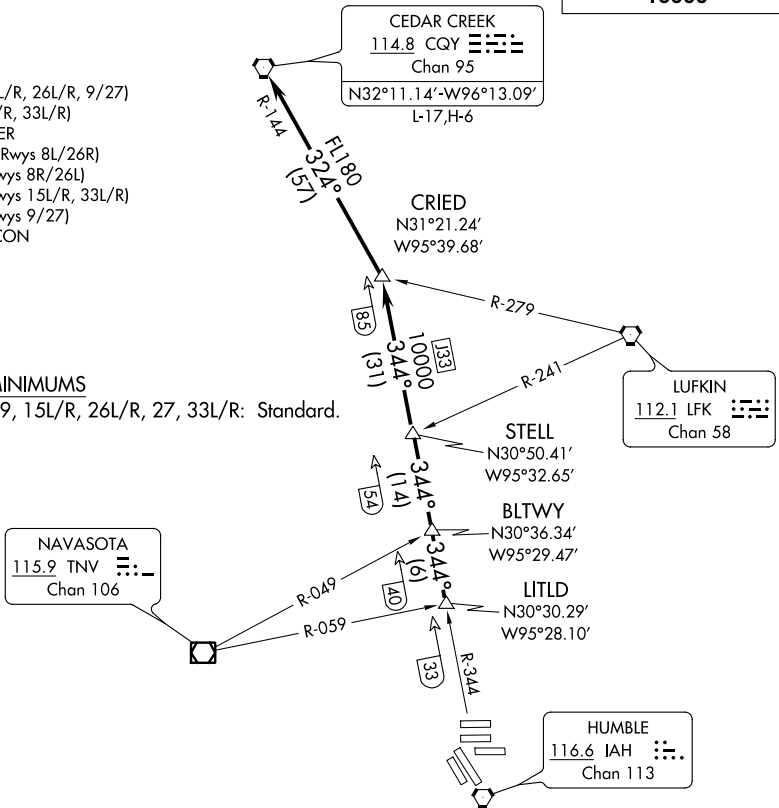
CRIED ONE DEPARTURE

D-ATIS
 124.05
 CLNC DEL
 128.1
 CPDLC
 GND CON
 118.575 (Rwys 8L/R, 26L/R, 9/27)
 121.7 (Rwys 15L/R, 33L/R)
 HOUSTON TOWER
 120.725 290.2 (Rwys 8L/26R)
 125.35 290.2 (Rwys 8R/26L)
 127.3 288.25 (Rwys 15L/R, 33L/R)
 135.15 290.2 (Rwys 9/27)
 HOUSTON DEP CON
 132.25 285.425

**TOP ALTITUDE:
 16000**

TAKEOFF MINIMUMS

Rwys 8L/R, 9, 15L/R, 26L/R, 27, 33L/R: Standard.



NOTE: RADAR required.

NOTE: Chart not to scale.

DEPARTURE ROUTE DESCRIPTION

TAKEOFF ALL RUNWAYS: Climb on assigned heading for RADAR vectors to LITLD INT, maintain 16000. Expect filed altitude 10 minutes after departure, thence

. . . . on IAH R-344 to STELL INT, then on IAH R-344 to CRIED INT, then left turn on CQY R-144 to CQY VORTAC.

EL DORADO ONE DEPARTURE

AL-5461 (FAA)

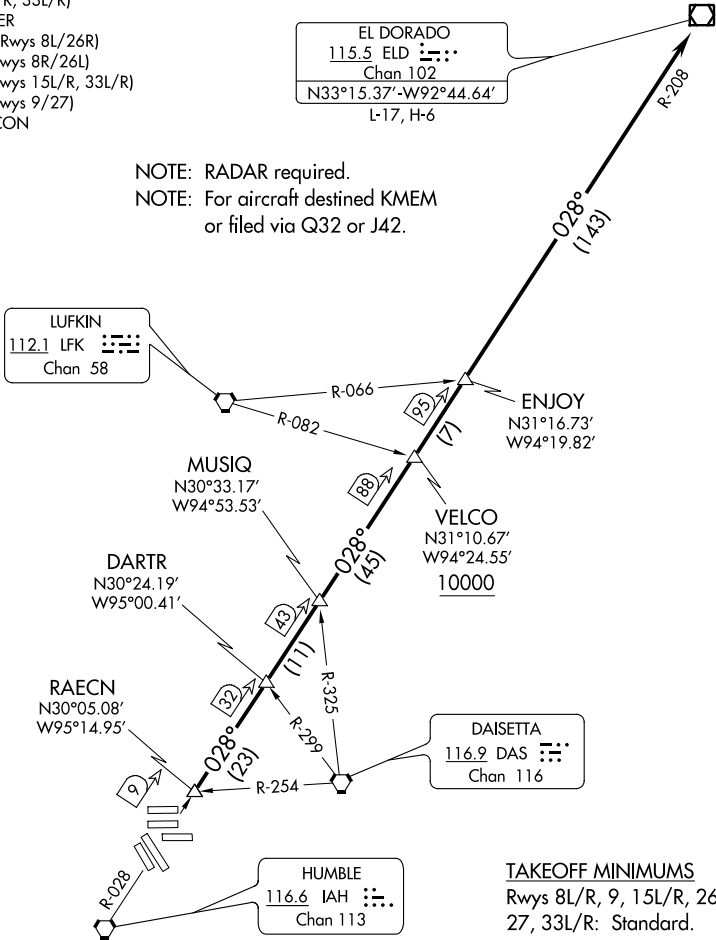
HOUSTON, TEXAS

D-ATIS
 124.05
 CLNC DEL
 128.1
 CPDLC
 GND CON
 118.575 (Rwys 8L/R, 26L/R, 9/27)
 121.7 (Rwys 15L/R, 33L/R)
 HOUSTON TOWER
 120.725 290.2 (Rwys 8L/26R)
 125.35 290.2 (Rwys 8R/26L)
 127.3 288.25 (Rwys 15L/R, 33L/R)
 135.15 290.2 (Rwys 9/27)
 HOUSTON DEP CON
 132.25 285.425

**TOP ALTITUDE:
 16000**

EL DORADO
 115.5 ELD :...:
 Chan 102
 N33°15.37'-W92°44.64'
 L-17, H-6

NOTE: RADAR required.
 NOTE: For aircraft destined KMEM
 or filed via Q32 or J42.



LUFKIN
 112.1 LFK :...:
 Chan 58

RAECN
 N30°05.08'
 W95°14.95'

DARTR
 N30°24.19'
 W95°00.41'

MUSIQ
 N30°33.17'
 W94°53.53'

DAISETTA
 116.9 DAS :...:
 Chan 116

HUMBLE
 116.6 IAH :...:
 Chan 113

TAKEOFF MINIMUMS
 Rwys 8L/R, 9, 15L/R, 26L/R,
 27, 33L/R: Standard.

NOTE: Chart not to scale.

DEPARTURE ROUTE DESCRIPTION

TAKEOFF ALL RUNWAYS: Climb on assigned heading for RADAR vectors to RAECN INT, maintain 16000. Expect filed altitude 10 minutes after departure, thence . . .

. . . on IAH R-028 and the ELD R-208 to ELD VOR/DME, cross VELCO INT at or above 10000.

(FLYZA5.FLYZA) 21112

FLYZA FIVE DEPARTURE (RNAV)

GEORGE BUSH INTCNL/HOUSTON (IAH)

AL-5461 (FAA)

HOUSTON, TEXAS

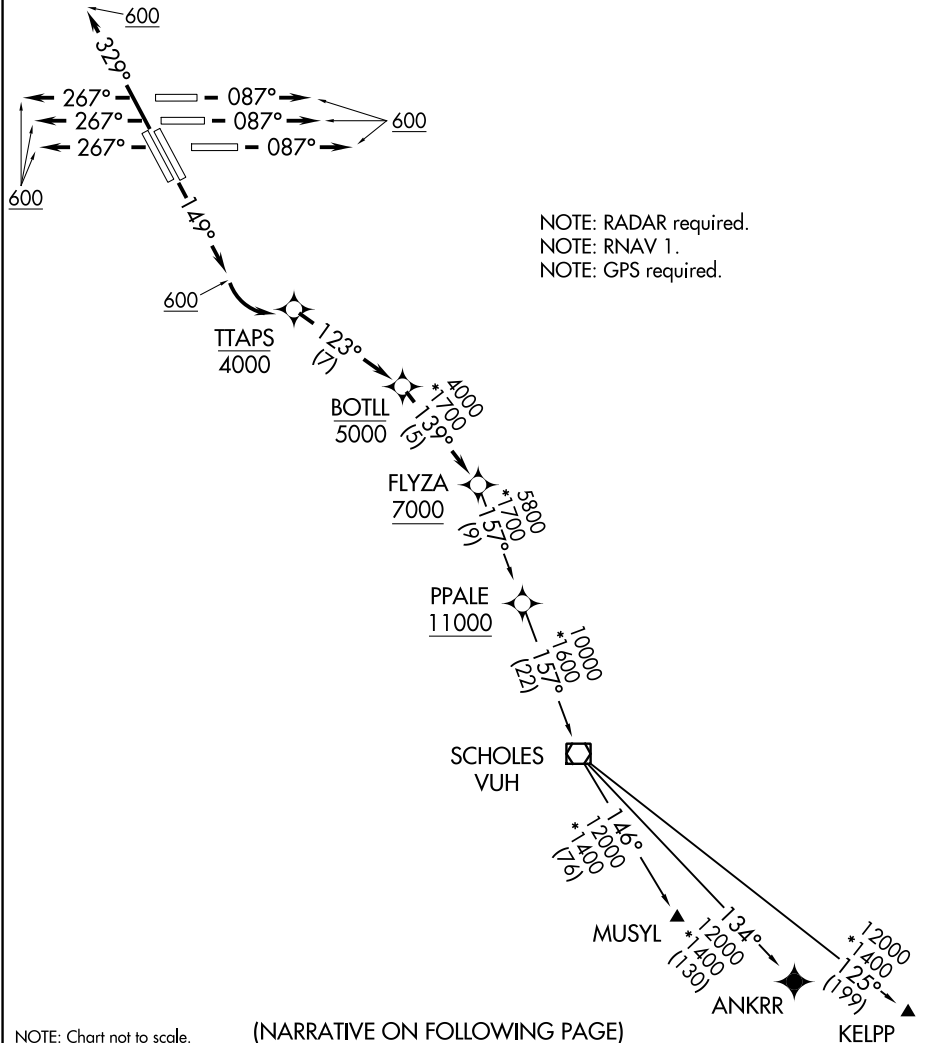
D-ATIS
 124.05
 CLNC DEL
 128.1
 CPDLC
 GND CON
 118.575 (Rwys 8L/R, 26L/R, 9, 27)
 121.7 (Rwys 15L/R, 33L/R)
 HOUSTON TOWER
 120.725 290.2 (Rwys 8L, 26R)
 125.35 290.2 (Rwys 8R, 26L)
 127.3 288.25 (Rwys 15L/R, 33L/R)
 135.15 290.2 (Rwys 9, 27)
 HOUSTON DEP CON
 127.125 269.075

**TOP ALTITUDE:
 16000**

TAKEOFF MINIMUMS

Rwys 8L/R, 9, 15L/R, 26L/R, 27, 33L/R:

Standard with minimum climb of 500' per NM to 800.



SC-5, 22 FEB 2024 to 21 MAR 2024

SC-5, 22 FEB 2024 to 21 MAR 2024

FLYZA FIVE DEPARTURE (RNAV)

(FLYZA5.FLYZA) 15SEP16

HOUSTON, TEXAS

GEORGE BUSH INTCNL/HOUSTON (IAH)



DEPARTURE ROUTE DESCRIPTION

TAKEOFF RUNWAYS 8L/R, 9: Climb heading 087° to 600, expect RADAR vectors to cross BOTLL at or below 5000, thence

TAKEOFF RUNWAYS 15L/R: Climb heading 149° to 600, then left turn direct to cross TTAPS at or below 4000, then on track 123° to cross BOTLL at or below 5000, thence

TAKEOFF RUNWAYS 26L/R, 27: Climb heading 267° to 600, expect RADAR vectors to cross BOTLL at or below 5000, thence

TAKEOFF RUNWAYS 33L/R: Climb heading 329° to 600, expect RADAR vectors to cross BOTLL at or below 5000, thence

. . . . on track 139° to cross FLYZA at or above 7000, then on (transition). Maintain 16000. Expect filed altitude 10 minutes after departure.

ANKRR TRANSITION (FLYZA5.ANKRR)

KELPP TRANSITION (FLYZA5.KELPP)

MUSYL TRANSITION (FLYZA5.MUSYL)

SC-5, 22 FEB 2024 to 21 MAR 2024

SC-5, 22 FEB 2024 to 21 MAR 2024

(GIFFA1.GIFFA) 21280

GIFFA ONE DEPARTURE

AL-5461 (FAA)

GEORGE BUSH INTCNL/HOUSTON (IAH)


HOUSTON, TEXAS

**TOP ALTITUDE:
16000**

CEDAR CREEK
114.8 CQY 
Chan 95

D-ATIS
124.05
CLNC DEL
128.1
CPDLC
GND CON
118.575 (Rwys 8L/R, 9, 26L/R, 27)
121.7 (Rwys 15L/R, 33L/R)
HOUSTON TOWER
120.725 290.2 (Rwys 8L/26R)
125.35 290.2 (Rwys 8R/26L)
127.3 288.25 (Rwys 15L/R, 33L/R)
135.15 290.2 (Rwys 9/27)
HOUSTON DEP CON
132.25 285.425

NOTE: RADAR required.
NOTE: For aircraft destined for the DFW terminal area only.

LEONA
110.8 LOA 
Chan 45

GIFFA
N31°22.89'
W95°15.10'
L-19-21, H-6
10000

 85

BUMCO
N30°38.91'
W95°18.03'

MONNT
N30°28.65'
W95°18.70'
L19-21, H7

DAISETTA
116.9 DAS 
Chan 116

TAKEOFF MINIMUMS
Rwys 8L/R, 9, 15L/R, 26L/R, 27,
33L/R: Standard.

NOTE: Chart not to scale.

DEPARTURE ROUTE DESCRIPTION

TAKEOFF ALL RUNWAYS: Climb on assigned heading for RADAR vectors to MONNT INT, maintain 16000. Expect filed altitude 10 minutes after departure, thence . . .

. . . on IAH R-358 to cross GIFFA INT at or above 10000.

GIFFA ONE DEPARTURE

(GIFFA1.GIFFA) 07OCT21

HOUSTON, TEXAS

GEORGE BUSH INTCNL/HOUSTON (IAH)

SC-5, 22 FEB 2024 to 21 MAR 2024

SC-5, 22 FEB 2024 to 21 MAR 2024

GUMBY THREE DEPARTURE (RNAV)
(GUMBY3;GUMBY) 10DEC15

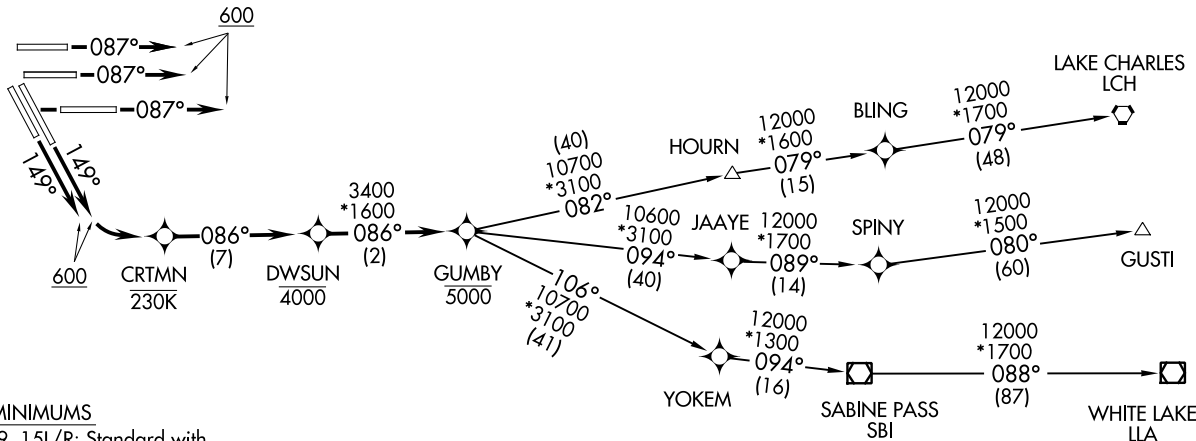
HOUSTON, TEXAS
GEORGE BUSH INTNTL/HOUSTON (IAH)

(GUMBY3;GUMBY) 21112
GUMBY THREE DEPARTURE (RNAV)

HOUSTON, TEXAS
GEORGE BUSH INTNTL/HOUSTON (IAH)
AL-5461 (FAA)

- D-ATIS 124.05
- CLNC DEL 128.1
- CPDLC
- GND CON
- 118.575 (Rwys 8L/R, 26L/R, 9, 27)
- 121.7 (Rwys 15L/R, 33L/R)
- HOUSTON TOWER
- 120.725 290.2 (Rwys 8L, 26R)
- 125.35 290.2 (Rwys 8R, 26L)
- 127.3 288.25 (Rwys 15L/R, 33L/R)
- 135.15 290.2 (Rwys 9, 27)
- HOUSTON DEP CON
- 127.125 269.075

TOP ALTITUDE:
16000



TAKEOFF MINIMUMS

Rwy 8L/R, 9, 15L/R: Standard with minimum climb of 500' per NM to 1700.

- NOTE: RADAR required.
- NOTE: DME/DME/IRU or GPS Required.
- NOTE: RNAV 1.

(NARRATIVE ON FOLLOWING PAGE)

NOTE: Chart not to scale.



DEPARTURE ROUTE DESCRIPTION

TAKEOFF RUNWAYS 8L/R, 9: Climb heading 087° to 600, expect RADAR vectors to cross DWSUN at or below 4000, thence. . . .

TAKEOFF RUNWAYS 15L/R: Climb heading 149° to 600, then left turn direct CRTMN, then on track 086° to cross DWSUN at or below 4000, thence. . . .

. . . .on track 086° to cross GUMBY at or below 5000, then on (transition). Maintain 16000. Expect filed altitude 10 minutes after departure.

GUSTI TRANSITION (GUMBY3.GUSTI)

LAKE CHARLES TRANSITION (GUMBY3.LCH)

WHITE LAKE TRANSITION (GUMBY3.LLA)

SC-5, 22 FEB 2024 to 21 MAR 2024

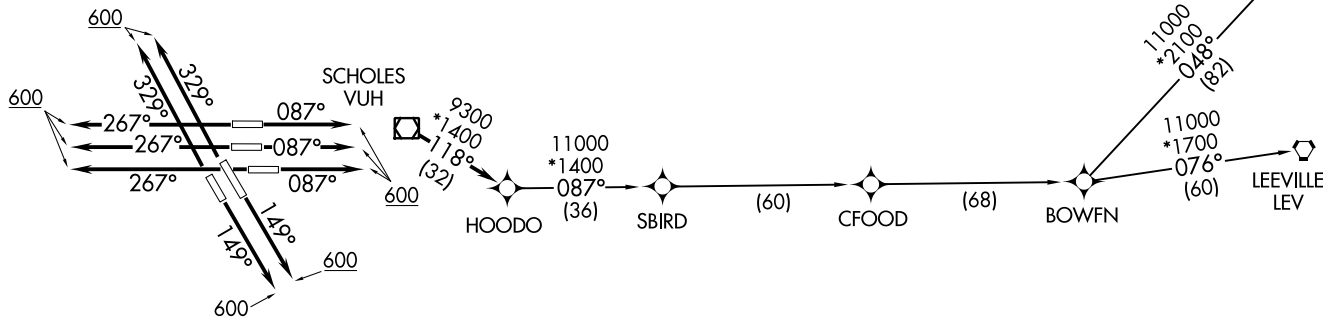
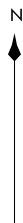
SC-5, 22 FEB 2024 to 21 MAR 2024

HOODOO SEVEN DEPARTURE (RNAV)
 (HOODOO7.HOODOO) 07 OCT 21
 HOUSTON, TEXAS
 GEORGE BUSH INT/CNTL/HOUSTON (IAH)

D-ATIS
 124.05
 CLNC DEL
 128.1
 CPDLC
 GND CON
 118.575 (Rwys 8L/R, 9, 26L/R, 27)
 121.7 (Rwys 15L/R, 33L/R)
 HOUSTON TOWER
 120.725 290.2 (Rwys 8L, 26R)
 125.35 290.2 (Rwys 8R, 26L)
 127.3 288.25 (Rwys 15L/R, 33L/R)
 135.15 290.2 (Rwys 9, 27)
 HOUSTON DEP CON
 127.125 269.075

NOTE: RNAV 1.
 NOTE: RADAR required.
 NOTE: ATC assigned only.
 NOTE: DME/DME/IRU or GPS required.
 NOTE: For non-GPS equipped aircraft, LCH, LLA,
 TBD, and LEV DME's must be operational.

**TOP ALTITUDE:
16000**



TAKEOFF MINIMUMS

Rwys 8L/R, 9, 15L/R, 26L/R, 27, 33L/R:
 Standard with minimum climb of 500' per NM to 600.

NOTE: Chart not to scale.

(NARRATIVE ON FOLLOWING PAGE)

HOODOO7.HOODOO) 21 280
 HOODOO SEVEN DEPARTURE (RNAV)
 AL-5461 (FAA)
 HOUSTON, TEXAS
 GEORGE BUSH INT/CNTL/HOUSTON (IAH)



DEPARTURE ROUTE DESCRIPTION

TAKEOFF RUNWAYS 8L/R, 9: Climb on heading 087° to 600, for RADAR vectors to VUH VOR/DME, thence

TAKEOFF RUNWAYS 15L/R: Climb on heading 149° to 600, for RADAR vectors to VUH VOR/DME, thence

TAKEOFF RUNWAYS 26L/R, 27: Climb on heading 267° to 600, for RADAR vectors to VUH VOR/DME, thence

TAKEOFF RUNWAYS 33L/R: Climb on heading 329° to 600, for RADAR vectors to VUH VOR/DME, thence

. . . . on track 118° to HOODO, then on (transition). Maintain 16000.

Expect filed altitude 10 minutes after departure.

BOWFN TRANSITION (HOODO7.BOWFN)

CFOOD TRANSITION (HOODO7.CFOOD)

HARVEY TRANSITION (HOODO7.HRV)

LEEVILLE TRANSITION (HOODO7.LEV)

SBIRD TRANSITION (HOODO7.SBIRD)

SC-5, 22 FEB 2024 to 21 MAR 2024

SC-5, 22 FEB 2024 to 21 MAR 2024

(INDIE8.INDIE) 21280

AL-5461 (FAA)

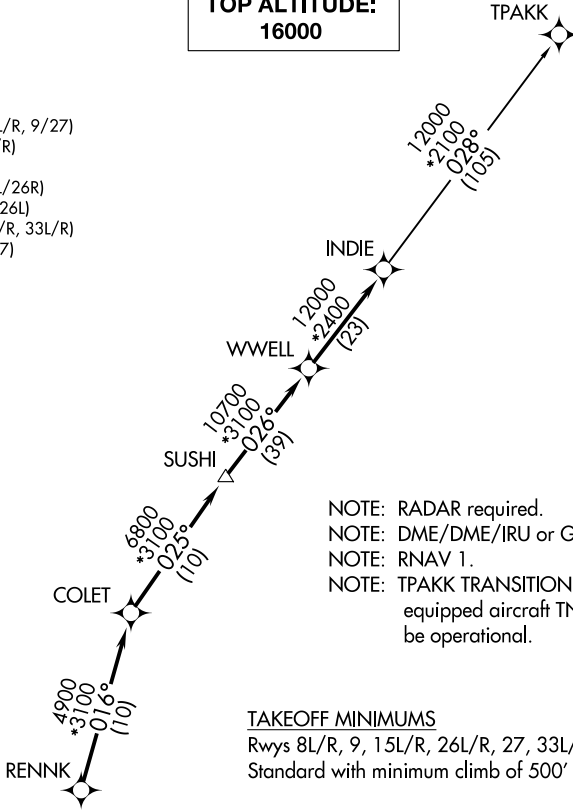
GEORGE BUSH INTCNL/HOUSTON (IAH)

INDIE EIGHT DEPARTURE (RNAV)

HOUSTON, TEXAS

D-ATIS
 124.05
 CLNC DEL
 128.1
 CPDLC
 GND CON
 118.575 (Rwys 8L/R, 26L/R, 9/27)
 121.7 (Rwys 15L/R, 33L/R)
 HOUSTON TOWER
 120.725 290.2 (Rwys 8L/26R)
 125.35 290.2 (Rwys 8R/26L)
 127.3 288.25 (Rwys 15L/R, 33L/R)
 135.15 290.2 (Rwys 9/27)
 HOUSTON DEP CON
 132.25 285.425

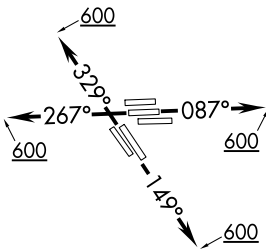
**TOP ALTITUDE:
 16000**



- NOTE: RADAR required.
- NOTE: DME/DME/IRU or GPS required.
- NOTE: RNAV 1.
- NOTE: TPAKK TRANSITION: For non GPS equipped aircraft TNV DME must be operational.

TAKEOFF MINIMUMS

Rwys 8L/R, 9, 15L/R, 26L/R, 27, 33L/R:
 Standard with minimum climb of 500' per NM to 600.



NOTE: Chart not to scale.



DEPARTURE ROUTE DESCRIPTION

- TAKEOFF RUNWAYS 8L/R, 9: Climb on heading 087° to 600 for RADAR vectors to RENNK, thence . . .
- TAKEOFF RUNWAYS 15L/R: Climb on heading 149° to 600 for RADAR vectors to RENNK, thence . . .
- TAKEOFF RUNWAYS 26L/R, 27: Climb on heading 267° to 600 for RADAR vectors to RENNK, thence . . .
- TAKEOFF RUNWAYS 33L/R: Climb on heading 329° to 600 for RADAR vectors to RENNK, thence . . .

. . . on track 016° to COLET, then on track 025° to SUSHI, then on track 026° to WWELL, then on track 026° to INDIE, then on (transition). Maintain 16000 or as assigned by ATC. Expect filed altitude 10 minutes after departure.

TPAKK TRANSITION (INDIE8.TPAKK)

INDIE EIGHT DEPARTURE (RNAV)

(INDIE8.INDIE) 07OCT21

HOUSTON, TEXAS

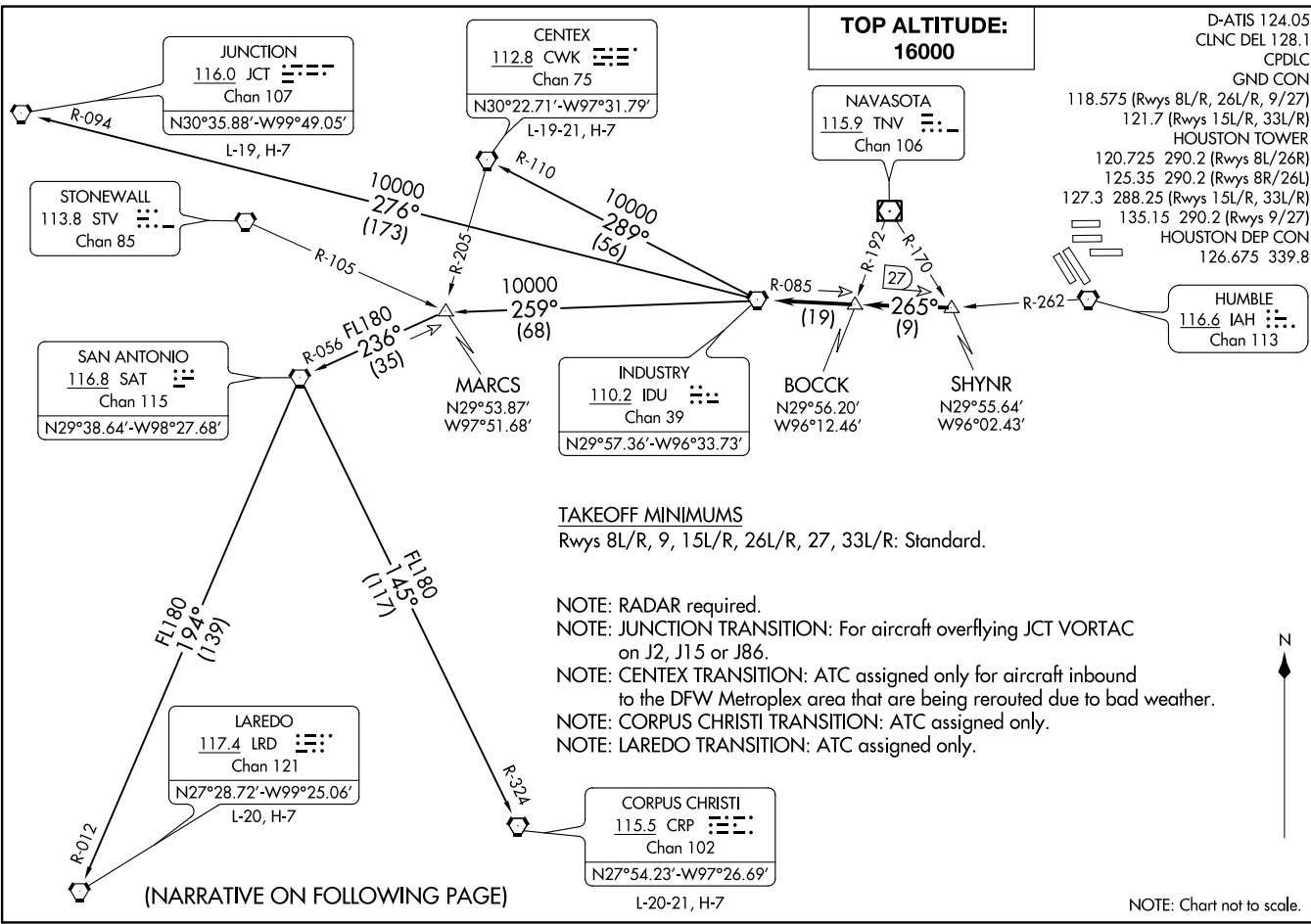
GEORGE BUSH INTCNL/HOUSTON (IAH)

SC-5, 22 FEB 2024 to 21 MAR 2024

SC-5, 22 FEB 2024 to 21 MAR 2024

INDUSTRY ONE DEPARTURE
(IDU1, IDU) 070CZ1

HOUSTON, TEXAS
GEORGE BUSH INTCNL/HOUSTON (IAH)



(IDU1, IDU) 21280
INDUSTRY ONE DEPARTURE

AL-5461 (FAA)

HOUSTON, TEXAS
GEORGE BUSH INTCNL/HOUSTON (IAH)

(NARRATIVE ON FOLLOWING PAGE)

NOTE: Chart not to scale.



DEPARTURE ROUTE DESCRIPTION

TAKEOFF ALL RUNWAYS: Climb on assigned heading for RADAR vectors to SHYNR INT, maintain 16000. Expect filed altitude 10 minutes after departure, thence

. . . . on IDU R-085 to BOCK INT, then on IDU R-085 to IDU VORTAC.

CENTEX TRANSITION (IDU1.CWK): From over IDU VORTAC on IDU R-289 and CWK R-110 to CWK VORTAC.

CORPUS CHRISTI TRANSITION (IDU1.CRP): From over IDU VORTAC on IDU R-259 to MARCS INT, then on SAT R-056 to SAT VORTAC, then on SAT R-145 and CRP R-324 to CRP VORTAC.

JUNCTION TRANSITION (IDU1.JCT): From over IDU VORTAC on IDU R-276 and JCT R-094 to JCT VORTAC.

LAREDO TRANSITION (IDU1.LRD): From over IDU VORTAC on IDU R-259 to MARCS INT, then on SAT R-056 to SAT VORTAC, then on SAT R-194 and LRD R-012 to LRD VORTAC.

SC-5, 22 FEB 2024 to 21 MAR 2024

SC-5, 22 FEB 2024 to 21 MAR 2024

(JCT1.JCT) 21112

GEORGE BUSH INTCNTL/HOUSTON (IAH)

JUNCTION ONE DEPARTURE

AL-5461 (FAA)

HOUSTON, TEXAS

D-ATIS 124.05
 CLNC DEL 128.1
 CPDLC
 HOUSTON DEP CON
 126.675 339.8
 GND CON
 118.575 (Rwys 8L/R, 26L/R, 9/27)
 121.7 (Rwys 15L/R, 33L/R)
 HOUSTON TOWER
 120.725 290.2 (Rwys 8L/26R)
 125.35 290.2 (Rwys 8R/26L)
 127.3 288.25 (Rwys 15L/R, 33L/R)
 135.15 290.2 (Rwys 9/27)

**TOP ALTITUDE:
16000**

JUNCTION
 116.0 JCT
 Chan 107
 N30°35.88'
 W99°49.05'
 L-19, H-7

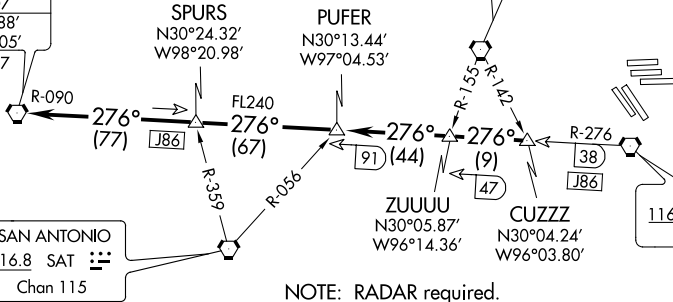
COLLEGE STATION
 113.3 CLL
 Chan 80

SAN ANTONIO
 116.8 SAT
 Chan 115

ZUUUU
 N30°05.87'
 W96°14.36'

CUZZZ
 N30°04.24'
 W96°03.80'

HUMBLE
 116.6 IAH
 Chan 113



NOTE: RADAR required.
 NOTE: For aircraft overflying JCT VORTAC
 on J86 filing FL240 or above.

TAKEOFF MINIMUMS

Rwys 8L/R, 9, 15L/R, 26L/R, 27, 33L/R: Standard.

NOTE: Chart not to scale.



DEPARTURE ROUTE DESCRIPTION

TAKEOFF ALL RUNWAYS: Climb on assigned heading for RADAR vectors to CUZZZ INT.
 Maintain 16000. Expect filed altitude 10 minutes after departure. Thence

. . . . on IAH R-276 and JCT R-090 to JCT VORTAC.

JUNCTION ONE DEPARTURE

HOUSTON, TEXAS

(JCT1.JCT) 22JUN17

GEORGE BUSH INTCNTL/HOUSTON (IAH)

SC-5, 22 FEB 2024 to 21 MAR 2024

SC-5, 22 FEB 2024 to 21 MAR 2024

(LCH5.LCH) 21112

GEORGE BUSH INTCNL/HOUSTON (IAH)

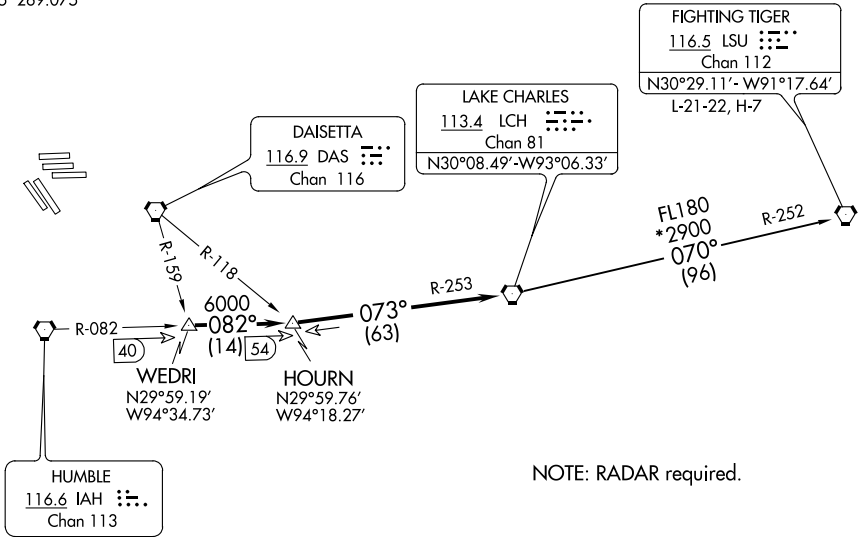
LAKE CHARLES FIVE DEPARTURE

AL-5461 (FAA)

HOUSTON, TEXAS

D-ATIS 124.05
 CLNC DEL 128.1
 CPDLC
 GND CON
 118.575 (Rwys 8L/R, 26L/R, 9/27)
 121.7 (Rwys 15L/R, 33L/R)
 HOUSTON TOWER
 120.725 290.2 (Rwys 8L/26R)
 125.35 290.2 (Rwys 8R/26L)
 127.3 288.25 (Rwys 15L/R, 33L/R)
 135.15 290.2 (Rwys 9/27)
 HOUSTON DEP CON
 127.125 269.075

TOP ALTITUDE:
16000



TAKEOFF MINIMUMS
 Rwys 8L/R, 9, 15L/R, 26L/R,
 27, 33L/R Standard.

NOTE: Chart not to scale.

SC-5, 22 FEB 2024 to 21 MAR 2024

SC-5, 22 FEB 2024 to 21 MAR 2024



DEPARTURE ROUTE DESCRIPTION

Climb on assigned heading for RADAR vectors to WEDRI INT, maintain 16000.
 Expect filed altitude 10 minutes after departure, thence. . . .

. . . .on IAH R-082 to Hourn INT, then on LCH R-253 to LCH VORTAC.

FIGHTING TIGERS TRANSITION (LCH5.LSU): From over LCH VORTAC on LCH R-070 and LSU R-252 to LSU VORTAC.

LAKE CHARLES FIVE DEPARTURE

(LCH5.LCH) 22JUN17

HOUSTON, TEXAS

GEORGE BUSH INTCNL/HOUSTON (IAH)

LEONA FOUR DEPARTURE

AL-5461 (FAA)

GEORGE BUSH INTCNL/HOUSTON (IAH)

HOUSTON, TEXAS

**TOP ALTITUDE:
16000**

D-ATIS
124.05
CLNC DEL
128.1
CPDLC

HOUSTON DEP CON
132.25 285.425
GND CON

118.575 (Rwys 8L/R, 26L/R, 9/27)
121.7 (Rwys 15L/R, 33L/R)
HOUSTON TOWER
120.725 290.2 (Rwys 8L/26R)
125.35 290.2 (Rwys 8R/26L)
127.3 288.25 (Rwys 15L/R, 33L/R)
135.15 290.2 (Rwys 9/27)

ARDMORE
116.7 ADM
Chan 114
N34°12.69' - W97°10.10'
L-17, H-6

TULSA
114.4 TUL
Chan 91
N36°11.78' - W95°47.29'

BONHAM
114.6 BYP
Chan 93
N33°32.25' - W96°14.05'
L-17, H-6

RANGER
115.7 FUZ
Chan 104
N32°53.37' - W97°10.77'
L-17, H-6

CEDAR CREEK
114.8 CQY
Chan 95
N32°11.14' - W96°13.09'

DOLEY
N32°11.35'
W96°23.08'

WACO
115.3 ACT
Chan 100
N31°39.74' - W97°16.14'

LEONA
110.8 LOA
Chan 45
N31°07.44' - W95°58.08'

TAKEOFF MINIMUMS

Rwys 8L/R, 9, 15L/R, 26L/R, 27, 33L/R: Standard.

NAVASOTA
115.9 TNV
Chan 106

WLLIS
N30°32.08'
W95°39.10'

HUMBLE
116.6 IAH
Chan 113

NOTE: RADAR required.

NOTE: Except for aircraft destined ACT or the DFW terminal area, all aircraft filing the LEONA SID must file one of the published transitions via FUZ (LOA4.FUZ), ADM (LOA4.ADM), or BYP (LOA4.BYP).

NOTE: RANGER TRANSITION: For aircraft overflying west/northwest of the DFW terminal area FL240 and above.

NOTE: RANGER TRANSITION: For aircraft overflying north/northwest of the DFW terminal area FL240 and above.

NOTE: BONHAM TRANSITION: For aircraft overflying/landing TUL VORTAC FL240 and above.

NOTE: Chart not to scale.

(NARRATIVE ON FOLLOWING PAGE)

LEONA FOUR DEPARTURE

(LOA4.LOA) 07OCT21

HOUSTON, TEXAS

GEORGE BUSH INTCNL/HOUSTON (IAH)

SC-5, 22 FEB 2024 to 21 MAR 2024

SC-5, 22 FEB 2024 to 21 MAR 2024

LEONA FOUR DEPARTURE



DEPARTURE ROUTE DESCRIPTION

TAKEOFF ALL RUNWAYS: Climb on assigned heading for RADAR vectors to WLLIS INT, maintain 16000. Expect filed altitude 10 minutes after departure, thence

. . . . on LOA R-147 to LOA VORTAC.

ARDMORE TRANSITION (LOA4.ADM): From over LOA VORTAC on LOA R-334 to DOLEY INT, then on ADM R-156 to ADM VORTAC.

BONHAM TRANSITION (LOA4.BYP): From over LOA VORTAC on LOA R-341 and CQY R-163 to CQY VORTAC, then on BYP R-173 to BYP VORTAC.

RANGER TRANSITION (LOA4.FUZ): From over LOA VORTAC on LOA R-334 to DOLEY INT, then on FUZ R-130 to FUZ VORTAC.

SC-5, 22 FEB 2024 to 21 MAR 2024

SC-5, 22 FEB 2024 to 21 MAR 2024

(LFK3.LFK) 21280

LUFKIN THREE DEPARTURE

AL-5461 (FAA)

GEORGE BUSH INTCNL/HOUSTON (IAH)
HOUSTON, TEXAS

D-ATIS
124.05
CLNC DEL
128.1
CPDLC
GND CON
118.575 (Rwys 8L/R, 26L/R, 9/27)
121.7 (Rwys 15L/R, 33L/R)
HOUSTON TOWER
120.725 290.2 (Rwys 8L/26R)
125.35 290.2 (Rwys 8R/26L)
127.3 288.25 (Rwys 15L/R, 33L/R)
135.15 290.2 (Rwys 9/27)
HOUSTON DEP CON
132.25 285.425

**TOP ALTITUDE:
16000**

LITTLE ROCK
113.9 LIT
Chan 86
N34°40.66'
W92°10.83'
L-18, H-6

NOTE: RADAR and DME required.
NOTE: For aircraft destined LIT or overflying LIT or PXV.

LUFKIN
112.1 LFK
Chan 58
N31°09.75'
W94°43.01'

SUSHI
N30°35.48'
W95°04.39'

COLET
N30°26.96'
W95°09.66'

KYANN
N30°15.53'
W95°13.96'

HUMBLE
116.6 IAH
Chan 113

DAISETTA
116.9 DAS
Chan 116

TAKEOFF MINIMUMS:
Rwys 8L/R, 9, 15L/R, 26L/R, 27, 33L/R: Standard.

NOTE: Chart not to scale.

(NARRATIVE ON FOLLOWING PAGE)

LUFKIN THREE DEPARTURE

(LFK3.LFK) 07OCT21

HOUSTON, TEXAS
GEORGE BUSH INTCNL/HOUSTON (IAH)

SC-5, 22 FEB 2024 to 21 MAR 2024

SC-5, 22 FEB 2024 to 21 MAR 2024

(LFK3.LFK) 21280

LUFKIN THREE DEPARTURE

AL-5461 (FAA)

GEORGE BUSH INTCNTL/HOUSTON (IAH)
HOUSTON, TEXAS



DEPARTURE ROUTE DESCRIPTION

TAKEOFF ALL RUNWAYS: Climb on assigned heading for RADAR vectors to KYANN INT, maintain 16000. Expect filed altitude 10 minutes after departure, thence. . . .

. . . .on IAH R-013 to COLET INT, then right turn on LFK R-203 to LFK VORTAC.

LITTLE ROCK TRANSITION (LFK3.LIT): From over LFK VORTAC on LFK R-026 to SKKIP INT, then on LFK R-026 and LIT R-207 to LIT VORTAC.

SC-5, 22 FEB 2024 to 21 MAR 2024

SC-5, 22 FEB 2024 to 21 MAR 2024

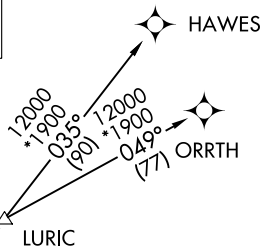
LUFKIN THREE DEPARTURE

(LFK3.LFK) 07OCT21

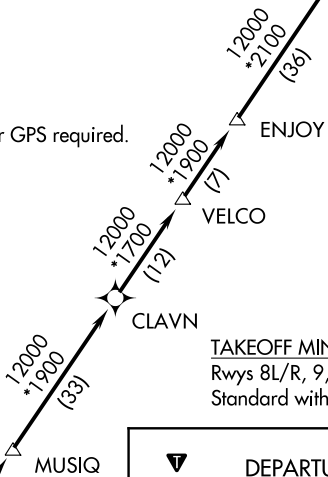
HOUSTON, TEXAS
GEORGE BUSH INTCNTL/HOUSTON (IAH)

D-ATIS
 124.05
 CLNC DEL
 128.1
 CPDLC
 GND CON
 118.575 (Rwys 8L/R, 26L/R, 9/27)
 121.7 (Rwys 15L/R, 33L/R)
 HOUSTON TOWER
 120.725 290.2 (Rwys 8L/26R)
 125.35 290.2 (Rwys 8R/26L)
 127.3 288.25 (Rwys 15L/R, 33L/R)
 135.15 290.2 (Rwys 9/27)
 HOUSTON DEP CON
 132.25 285.425

**TOP ALTITUDE:
 16000**



NOTE: RADAR required.
 NOTE: DME/DME/IRU or GPS required.
 NOTE: RNAV 1.



TAKEOFF MINIMUMS

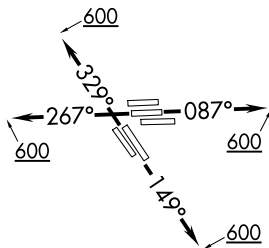
Rwys 8L/R, 9, 15L/R, 26L/R, 27, 33L/R:
 Standard with minimum climb of 500' per NM to 600.

DEPARTURE ROUTE DESCRIPTION

TAKEOFF RUNWAYS 8L/R, 9: Climb on heading 087° to 600 for RADAR vectors to KNTKY, thence . . .
TAKEOFF RUNWAYS 15L/R: Climb on heading 149° to 600 for RADAR vectors to KNTKY, thence . . .
TAKEOFF RUNWAYS 26L/R, 27: Climb on heading 267° to 600 for RADAR vectors to KNTKY, thence . . .
TAKEOFF RUNWAYS 33L/R: Climb on heading 329° to 600 for RADAR vectors to KNTKY, thence . . .

. . . on track 032° to PEETY, then on track 032° to DARTR, then on track 031° to MUSIQ, then on track 031° to CLAVN, then on track 031° to VELCO, then on track 031° to ENJOY, then on track 031° to LURIC, then on (transition). Maintain 16000 or as assigned by ATC. Expect filed altitude 10 minutes after departure.

HAWES TRANSITION (LURIC8.HAWES)
ORRTH TRANSITION (LURIC8.ORRTH)



NOTE: Chart not to scale.

SC-5, 22 FEB 2024 to 21 MAR 2024

SC-5, 22 FEB 2024 to 21 MAR 2024

MMUGS FOUR DEPARTURE (RNAV)
(MMUGS4.MMUGS) 10 DEC 15
HOUSTON, TEXAS
GEORGE BUSH INTL/NHTL/HOUSTON (IAH)

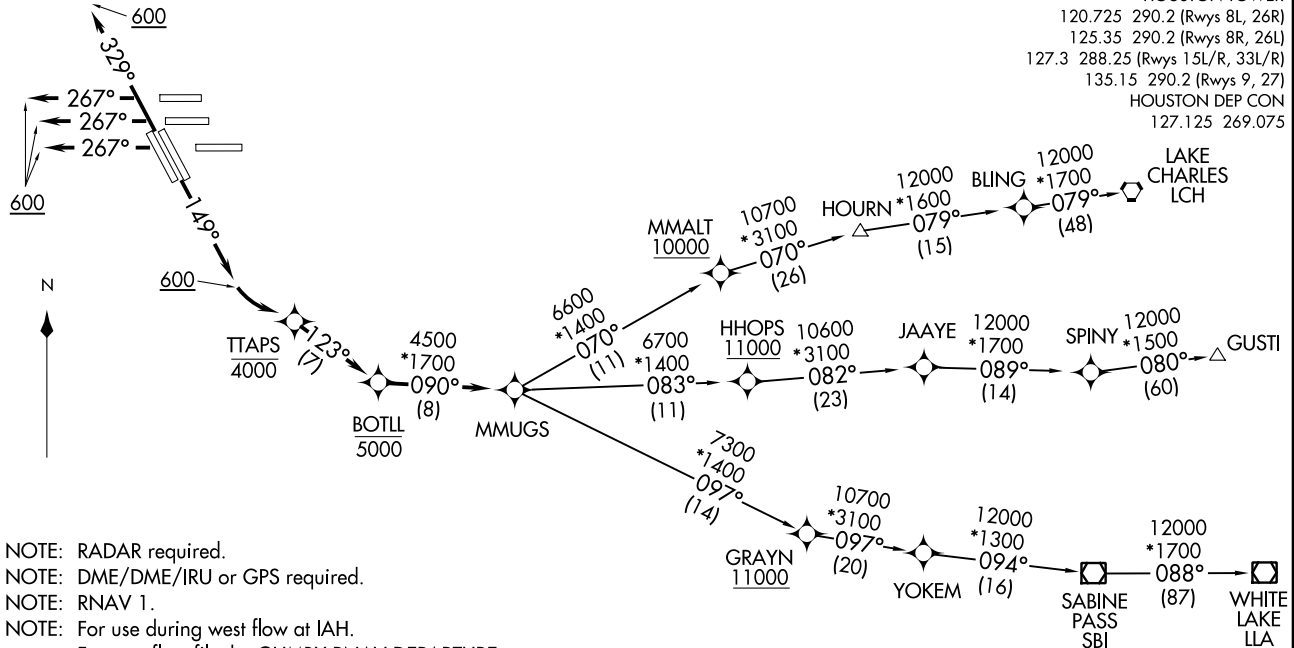
(MMUGS4.MMUGS) 21112
MMUGS FOUR DEPARTURE (RNAV)
AL-5461 (FAA)
HOUSTON, TEXAS
GEORGE BUSH INTL/NHTL/HOUSTON (IAH)

**TOP ALTITUDE:
16000**

TAKEOFF MINIMUMS

Rwys 15L/R, 26L/R, 27, 33L/R: Standard
with minimum climb of 500' per NM to 800.

D-ATIS 124.05
CLNC DEL 128.1
CPDLC
GND CON 118.575 (Rwys 8L/R, 26L/R, 9, 27)
121.7 (Rwys 15L/R, 33L/R)
HOUSTON TOWER 120.725 290.2 (Rwys 8L, 26R)
125.35 290.2 (Rwys 8R, 26L)
127.3 288.25 (Rwys 15L/R, 33L/R)
135.15 290.2 (Rwys 9, 27)
HOUSTON DEP CON 127.125 269.075



- NOTE: RADAR required.
- NOTE: DME/DME/IRU or GPS required.
- NOTE: RNAV 1.
- NOTE: For use during west flow at IAH.
For east flow file the GUMBY RNAV DEPARTURE.

(NARRATIVE ON FOLLOWING PAGE)

NOTE: Chart not to scale.



DEPARTURE ROUTE DESCRIPTION

TAKEOFF RUNWAYS 15L/R: Climb heading 149° to 600, then left turn direct to cross TTAPS at or below 4000, then on track 123° to cross BOTLL at or below 5000, thence

TAKEOFF RUNWAYS 26L/R, 27: Climb heading 267° to 600, expect RADAR vectors to cross BOTLL at or below 5000, thence

TAKEOFF RUNWAYS 33L/R: Climb heading 329° to 600, expect RADAR vectors to cross BOTLL at or below 5000, thence

. . . . on track 090° to MMUGS, then on (transition). Maintain 16000. Expect filed altitude 10 minutes after departure.

GUSTI TRANSITION (MMUGS4.GUSTI)

LAKE CHARLES TRANSITION (MMUGS4.LCH)

WHITE LAKE TRANSITION (MMUGS4.LLA)

SC-5, 22 FEB 2024 to 21 MAR 2024

SC-5, 22 FEB 2024 to 21 MAR 2024

RADAR and DME required.

TOP ALTITUDE:
16000

TAKEOFF MINIMUMS

Rwys 8L/R, 9, 27, 15L/R, 26L/R, 33L/R: Standard.



PALACIOS THREE DEPARTURE (PSX3.PSX) 03NOV22
 PALACIOS THREE DEPARTURE (PSX3.PSX) 03NOV22
 GEORGE BUSH INTCNL/HOUSTON (IAH)
 HOUSTON, TEXAS

D-ATIS
 124.05
 CLNC DEL
 128.1
 CPDLC
 GND CON
 118.575 (Rwys 8L/R, 26L/R, 9/27)
 121.7 (Rwys 15L/R, 33L/R)
 HOUSTON TOWER
 120.725 290.2 (Rwys 8L/26R)
 125.35 290.2 (Rwys 8R/26L)
 127.3 288.25 (Rwys 15L/R, 33L/R)
 135.15 290.2 (Rwys 9/27)
 HOUSTON DEP CON
 127.125 269.075

FORT STOCKTON
 116.9 FST
 Chan 116
 N30°57.13'
 W102°58.54'
 L-19, H-6

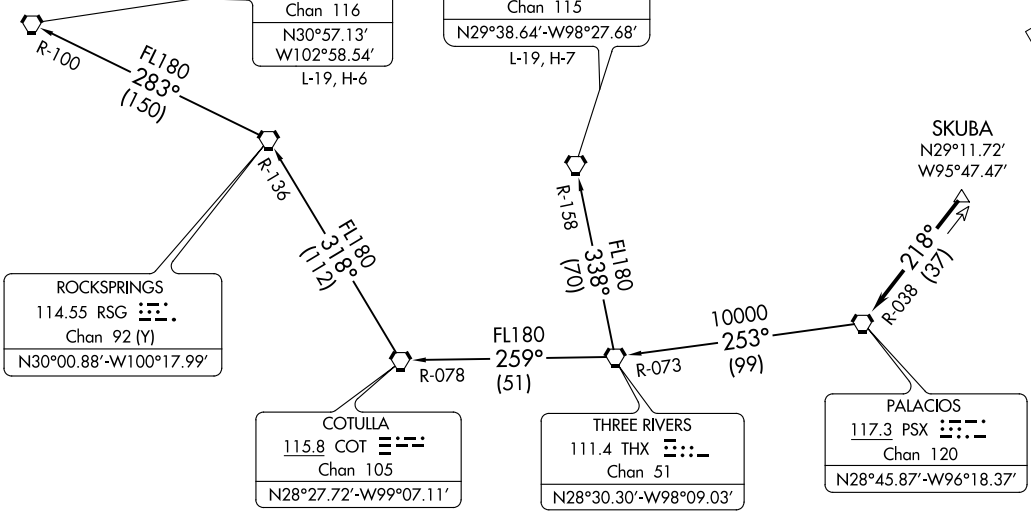
SAN ANTONIO
 116.8 SAT
 Chan 115
 N29°38.64'-W98°27.68'
 L-19, H-7

ROCKSPRINGS
 114.55 RSG
 Chan 92 (Y)
 N30°00.88'-W100°17.99'

COTULLA
 115.8 COT
 Chan 105
 N28°27.72'-W99°07.11'

THREE RIVERS
 111.4 THX
 Chan 51
 N28°30.30'-W98°09.03'

PALACIOS
 117.3 PSX
 Chan 120
 N28°45.87'-W96°18.37'



NOTE: Chart not to scale.

(NARRATIVE ON FOLLOWING PAGE)

(PSX3.PSX) 22307
 PALACIOS THREE DEPARTURE (PSX3.PSX) 03NOV22
 PALACIOS THREE DEPARTURE (PSX3.PSX) 03NOV22
 GEORGE BUSH INTCNL/HOUSTON (IAH)
 HOUSTON, TEXAS

PALACIOS THREE DEPARTURE



DEPARTURE ROUTE DESCRIPTION

TAKEOFF ALL RUNWAYS: Climb on assigned heading for RADAR vectors to SKUBA, maintain 16000.

Expect filed altitude 10 minutes after departure, thence

. . . . on PSX R-038 to PSX VORTAC.

FORT STOCKTON TRANSITION (PSX3.FST): From over PSX VORTAC on PSX R-253 and THX R-073 to THX VORTAC, then on THX R-259 and COT R-078 to COT VORTAC, then on COT R-318 and RSG R-136 to RSG VORTAC, then on RSG R-283 and FST R-100 to FST VORTAC.

SAN ANTONIO TRANSITION (PSX3.SAT): From over PSX VORTAC on PSX R-253 and THX R-073 to THX VORTAC, then on SAT R-158 to SAT VORTAC.

SC-5, 22 FEB 2024 to 21 MAR 2024

SC-5, 22 FEB 2024 to 21 MAR 2024

PITZZ FOUR DEPARTURE (RNAV)
(PITZZ4.PITZZ) 10DECI5

GEORGE BUSH INTCNL/HOUSTON (IAH)
HOUSTON, TEXAS

D-ATIS
124.05
CLNC DEL
128.1
CPDLC
GND CON
118.575 (Rwys 8L/R, 26L/R, 9/27)
121.7 (Rwys 15L/R, 33L/R)
HOUSTON TOWER
120.725 290.2 (Rwys 8L/26R)
125.35 290.2 (Rwys 8R/26L)
127.3 288.25 (Rwys 15L/R, 33L/R)
135.15 290.2 (Rwys 9/27)
HOUSTON DEP CON
126.675 339.8

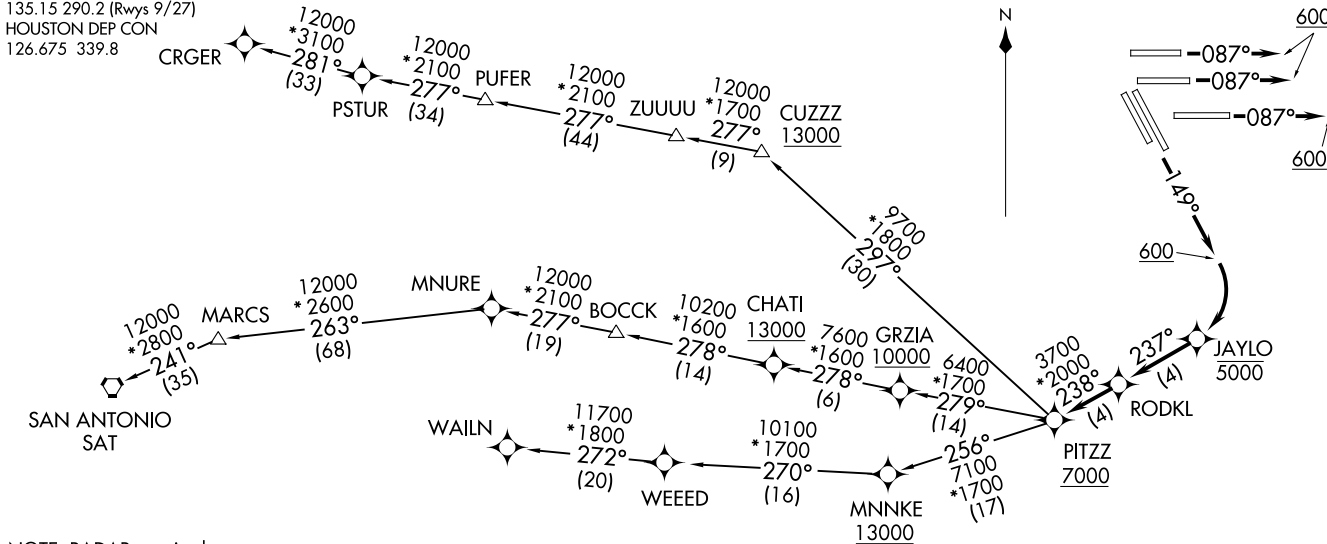
TAKEOFF MINIMUMS

Rwys 8L/R, 9, 15L/R: Standard with minimum climb of 500' per NM to 1500.

TOP ALTITUDE:
16000

(PITZZ4.PITZZ) 21112
PITZZ FOUR DEPARTURE (RNAV)

GEORGE BUSH INTCNL/HOUSTON (IAH)
AL-5461 (FAA)
HOUSTON, TEXAS



NOTE: RADAR required.
NOTE: DME/DME/IRU or GPS required.
NOTE: RNAV 1.
NOTE: For use during east flow at IAH.
For west flow file the BNDTO RNAV departure.

(NARRATIVE ON FOLLOWING PAGE)

NOTE: Chart not to scale.



DEPARTURE ROUTE DESCRIPTION

TAKEOFF RUNWAYS 8L/R, 9: Climb heading 087° to 600, expect RADAR vectors to RODKL, thence. . . .

TAKEOFF RUNWAYS 15L/R: Climb heading 149° to 600, then right turn direct to cross JAYLO at or below 5000, then on track 237° to RODKL, thence. . . .

. . . .on track 238° to cross PITZZ at or above 7000, then on (transition).
Maintain 16000. Expect filed altitude 10 minutes after departure.

CRGER TRANSITION (PITZZ4.CRGER)

MNURE TRANSITION (PITZZ4.MNURE)

SAN ANTONIO TRANSITION (PITZZ4.SAT)

WALIN TRANSITION (PITZZ4.WALIN)

SC-5, 22 FEB 2024 to 21 MAR 2024

SC-5, 22 FEB 2024 to 21 MAR 2024

RITAA SEVEN DEPARTURE (RNAV)

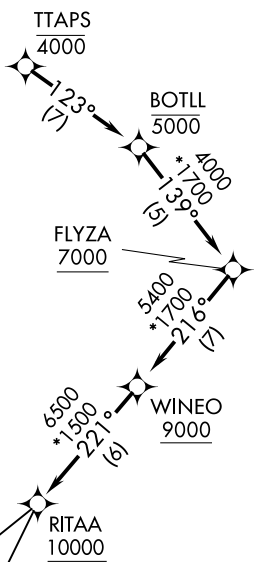
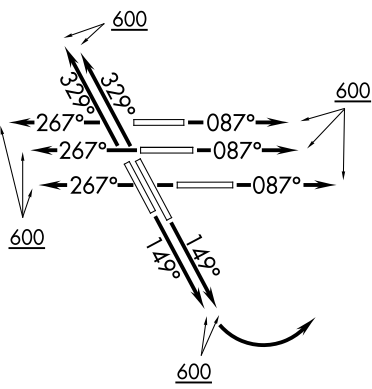
AL-5461 (FAA)

HOUSTON, TEXAS

D-ATIS
124.05
CLNC DEL
128.1
CPDLC
GND CON
118.575 (Rwys 8L/R, 26L/R, 9, 27)
121.7 (Rwys 15L/R, 33L/R)
HOUSTON TOWER
120.725 290.2 (Rwys 8L, 26R)
125.35 290.2 (Rwys 8R, 26L)
127.3 288.25 (Rwys 15L/R, 33L/R)
135.15 290.2 (Rwys 9, 27)
HOUSTON DEP CON
127.125 269.075

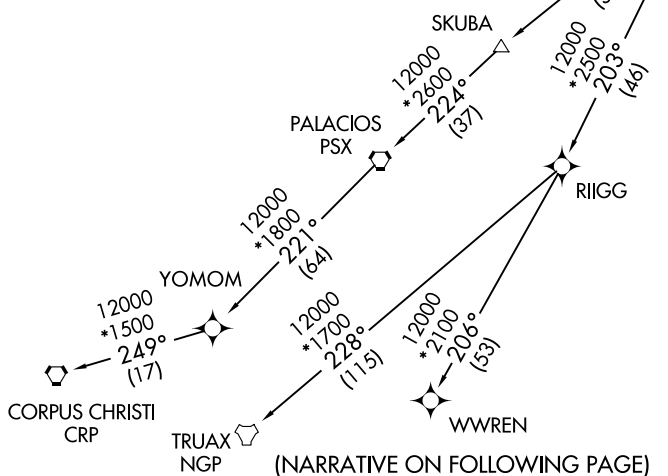
RNAV - 1 DME/DME/IRU or GPS.
RADAR required.

**TOP ALTITUDE:
16000**



TAKEOFF MINIMUMS

Rwys 8L/R, 9, 15L/R, 26L/R, 27, 33L/R:
Standard with minimum climb of 500' per NM to 800.



(NARRATIVE ON FOLLOWING PAGE)

NOTE: Chart not to scale.

SC-5, 22 FEB 2024 to 21 MAR 2024

SC-5, 22 FEB 2024 to 21 MAR 2024

RITAA SEVEN DEPARTURE (RNAV)

HOUSTON, TEXAS



DEPARTURE ROUTE DESCRIPTION

TAKEOFF RUNWAYS 8L/R, 9: Climb on heading 087° to 600, for RADAR vectors to cross BOTLL at or below 5000, thence

TAKEOFF RUNWAYS 15L/R: Climb on heading 149° to 600, then left turn direct to cross TTAPS at or below 4000, then on track 123° to cross BOTLL at or below 5000, thence

TAKEOFF RUNWAYS 26L/R, 27: Climb on heading 267° to 600, for RADAR vectors to cross BOTLL at or below 5000, thence

TAKEOFF RUNWAYS 33L/R: Climb on heading 329° to 600, for RADAR vectors to cross BOTLL at or below 5000, thence

. . . . on track 139° to cross FLYZA at or above 7000, then on track 216° to cross WINEO at or above 9000, then on track 221° to cross RITAA at or above 10000, then on (transition). Maintain 16000. Expect filed altitude 10 minutes after departure.

CORPUS CHRISTI TRANSITION (RITAA7.CRP)

PALACIOS TRANSITION (RITAA7.PSX)

TRUAX TRANSITION (RITAA7.NGP)

WWREN TRANSITION (RITAA7.WWREN)

YOMOM TRANSITION (RITAA7.YOMOM)

SC-5, 22 FEB 2024 to 21 MAR 2024

SC-5, 22 FEB 2024 to 21 MAR 2024

D-ATIS
 124.05
 CLNC DEL
 128.1
 CPDLC
 GND CON
 118.575 (Rwys 8L/R, 26L/R, 9/27)
 121.7 (Rwys 15L/R, 33L/R)
 HOUSTON TOWER
 120.725 290.2 (Rwys 8L/26R)
 125.35 290.2 (Rwys 8R/26L)
 127.3 288.25 (Rwys 15L/R, 33L/R)
 135.15 290.2 (Rwys 9/27)
 HOUSTON DEP CON
 132.25 285.425

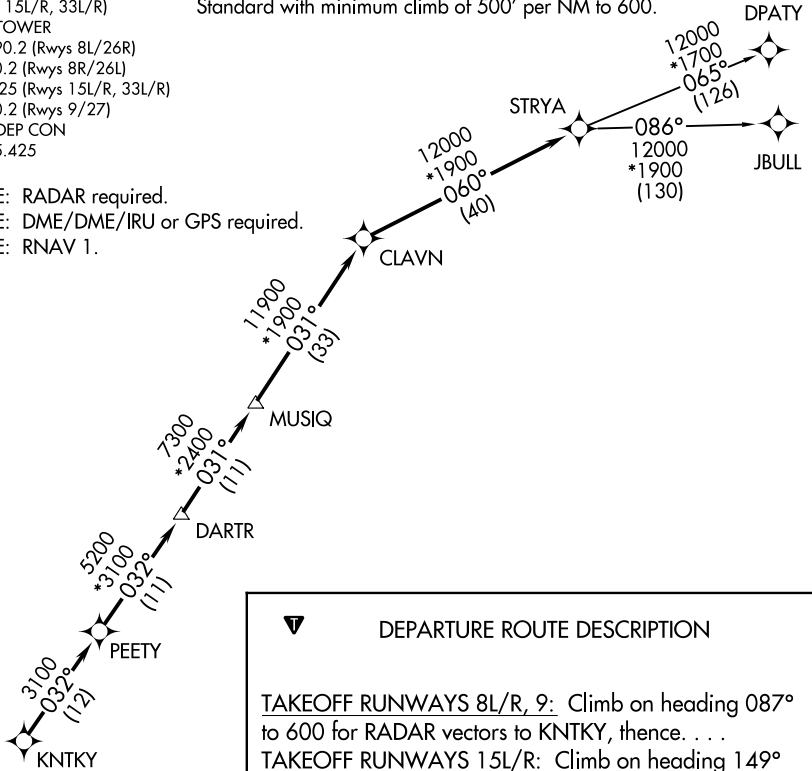
TAKEOFF MINIMUMS

Rwys 8L/R, 9, 15L/R, 26L/R, 27, 33L/R:

Standard with minimum climb of 500' per NM to 600.

**TOP ALTITUDE:
 16000**

- NOTE: RADAR required.
- NOTE: DME/DME/IRU or GPS required.
- NOTE: RNAV 1.



DEPARTURE ROUTE DESCRIPTION

TAKEOFF RUNWAYS 8L/R, 9: Climb on heading 087° to 600 for RADAR vectors to KNTKY, thence. . . .

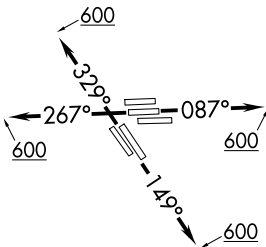
TAKEOFF RUNWAYS 15L/R: Climb on heading 149° to 600 for RADAR vectors to KNTKY, thence. . . .

TAKEOFF RUNWAYS 26L/R, 27: Climb on heading 267° to 600 for RADAR vectors to KNTKY, thence. . . .

TAKEOFF RUNWAYS 33L/R: Climb on heading 329° to 600 for RADAR vectors to KNTKY, thence. . . .

. . . .on track 032° to PEETY, then on track 032° to DARTR, then on track 031° to MUSIQ, then on track 031° to CLAVN, then on track 060° to STRYA, then on (transition). Maintain 16000 or as assigned by ATC. Expect filed altitude 10 minutes after departure.

DPATY TRANSITION (STRYA8.DPATY)
JBULL TRANSITION (STRYA8.JBULL)



NOTE: Chart not to scale.

SC-5, 22 FEB 2024 to 21 MAR 2024

SC-5, 22 FEB 2024 to 21 MAR 2024

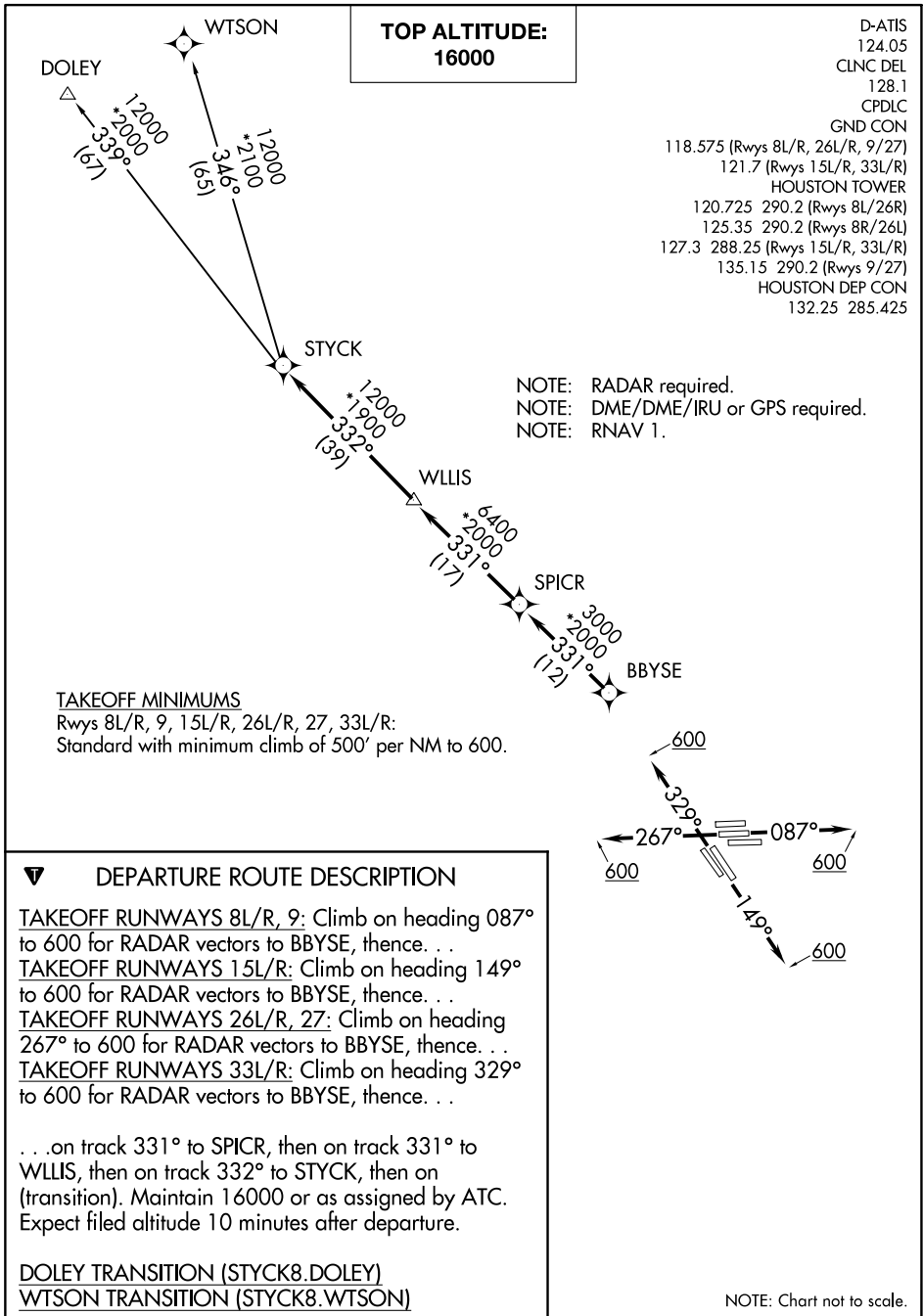
(STYCK8.STYCK) 21280

STYCK EIGHT DEPARTURE (RNAV)

GEORGE BUSH INTCNL/HOUSTON (IAH)

AL-5461 (FAA)

HOUSTON, TEXAS



SC-5, 22 FEB 2024 to 21 MAR 2024

SC-5, 22 FEB 2024 to 21 MAR 2024

STYCK EIGHT DEPARTURE (RNAV)

(STYCK8.STYCK) 07OCT21

HOUSTON, TEXAS

GEORGE BUSH INTCNL/HOUSTON (IAH)

D-ATIS
 124.05
 CLNC DEL
 128.1
 CPDLC
 GND CON
 118.575 (Rwys 8L/R, 26L/R, 9/27)
 121.7 (Rwys 15L/R, 33L/R)
 HOUSTON TOWER
 120.725 290.2 (Rwys 8L/26R)
 125.35 290.2 (Rwys 8R/26L)
 127.3 288.25 (Rwys 15L/R, 33L/R)
 135.15 290.2 (Rwys 9/27)
 HOUSTON DEP CON
 132.25 285.425

**TOP ALTITUDE:
 16000**

NOTE: RADAR required.
 NOTE: DME/DME/IRU or GPS required.
 NOTE: RNAV 1.

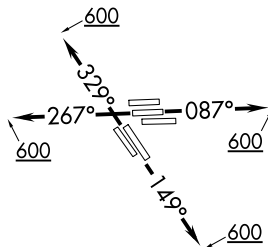
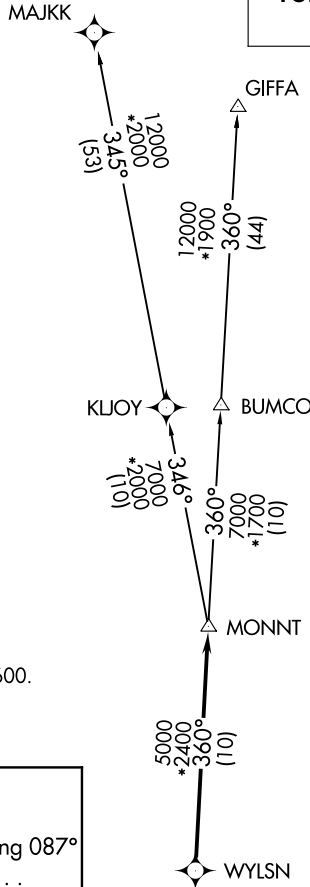
TAKEOFF MINIMUMS

Rwys 8L/R, 9, 15L/R, 26L/R, 27, 33L/R:
 Standard with minimum climb of 500' per NM to 600.

▼ DEPARTURE ROUTE DESCRIPTION

TAKEOFF RUNWAYS 8L/R, 9: Climb on heading 087° to 600 for RADAR vectors to WYLSN, then...
TAKEOFF RUNWAYS 15L/R: Climb on heading 149° to 600 for RADAR vectors to WYLSN, then...
TAKEOFF RUNWAYS 26L/R, 27: Climb on heading 267° to 600 for RADAR vectors to WYLSN, then...
TAKEOFF RUNWAYS 33L/R: Climb on heading 329° to 600 for RADAR vectors to WYLSN, then...
 ...on track 360° to MONNT, then on (transition).
 Maintain 16000 or as assigned by ATC. Expect filed altitude 10 minutes after departure.

GIFFA TRANSITION (WYLSN8.GIFFA)
MAJKK TRANSITION (WYLSN8.MAJKK)



NOTE: Chart not to scale.