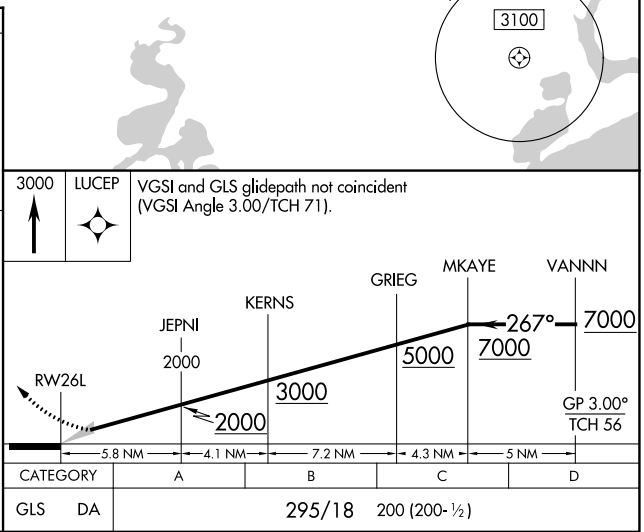
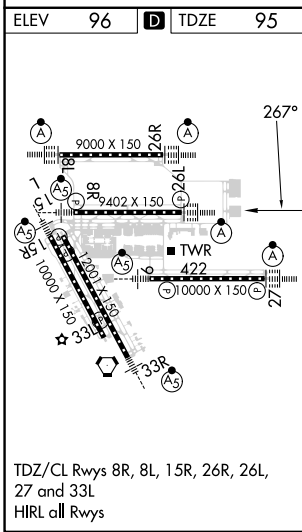
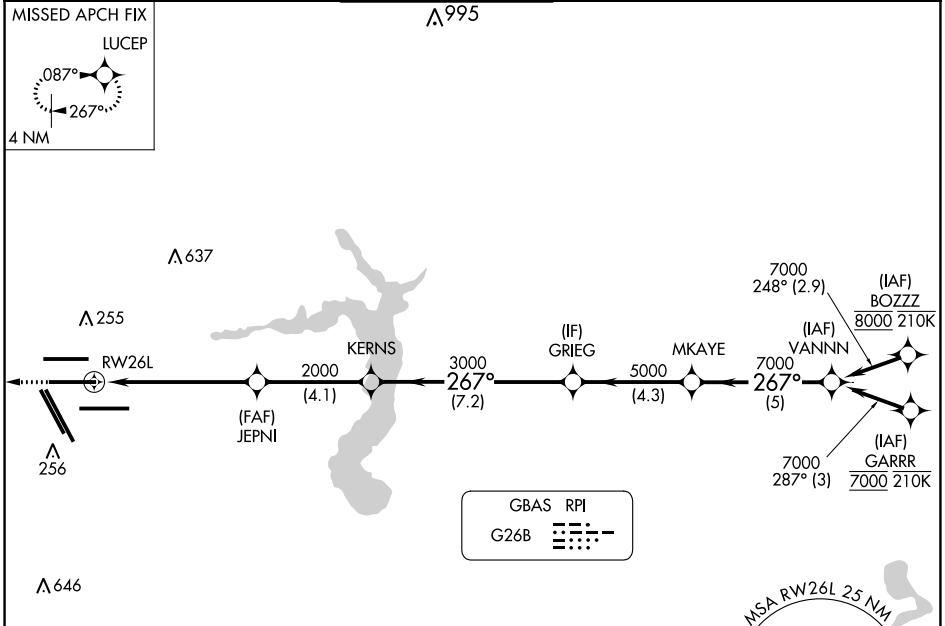


GBAS CH 20662 G26B	APP CRS 267°	Rwy Idg TDZE Apt Elev	9402 95 96
--	------------------------	-----------------------------	---------------------------------------

GLS RWY 26L

GEORGE BUSH INTCNL/HOUSTON (IAH)

RNP APCH - GPS.		ALSF-2		MISSED APPROACH: Climb to 3000 direct LUCEP and hold.	
<p>Simultaneous approach authorized. Use of FD or AP required during simultaneous operations. Autopilot coupled approach NA below 295.</p> <p>NA</p>					
D-ATIS 124.05	HOUSTON APP CON 120.05 379.1 EAST 124.35 316.15 WEST	HOUSTON TOWER 125.35 290.2	GND CON 118.575	CLNC DEL 128.1	CPDLC



SC-5, 22 FEB 2024 to 21 MAR 2024

SC-5, 22 FEB 2024 to 21 MAR 2024

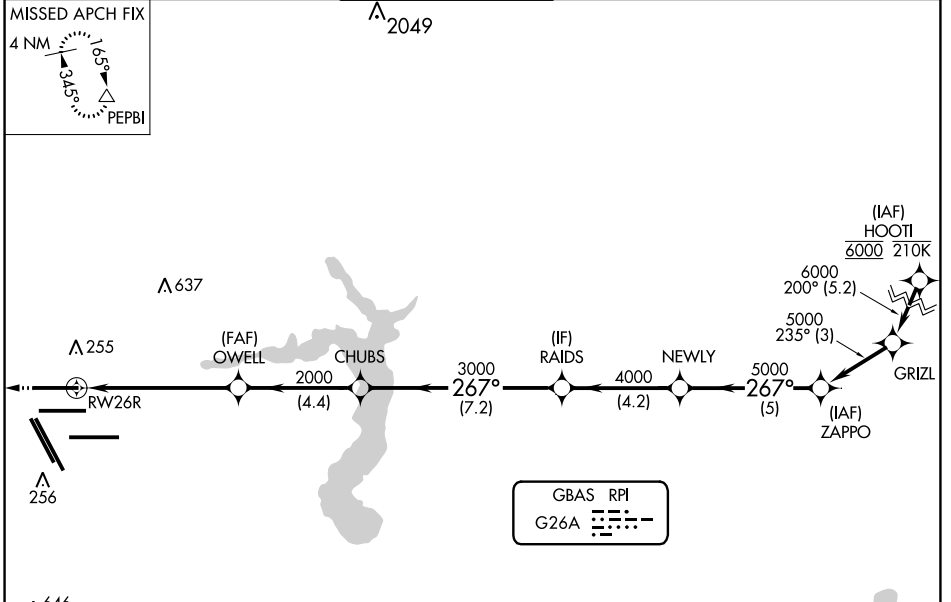
GBAS CH 21484 G26A	APP CRS 267°	Rwy Idg TDZE Apt Elev	9000 95 96
--	------------------------	-----------------------------	---------------------------------------

GLS RWY 26R

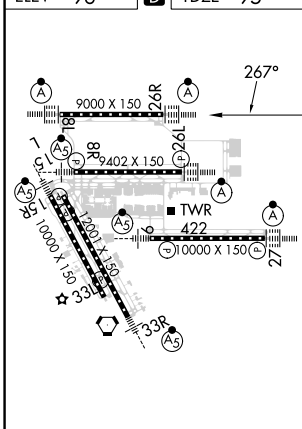
GEORGE BUSH INTCNL/HOUSTON (IAH)

RNP APCH - GPS.		ALSIF-2	MISSED APPROACH: Climb to 600 then climbing right turn to 3000 direct PEPBI and hold.		
Simultaneous approach authorized. Use of FD or AP required during simultaneous operations. Autopilot coupled approach NA below 295.					

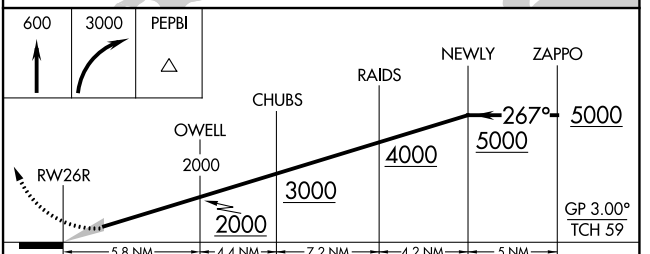
D-ATIS 124.05	HOUSTON APP CON 120.05 379.1 EAST 124.35 316.15 WEST	HOUSTON TOWER 120.725 290.2	GND CON 118.575	CLNC DEL 128.1	CPDLC
-------------------------	--	---------------------------------------	---------------------------	--------------------------	-------



ELEV 96	D	TDZE 95
---------	----------	---------



TDZ/CL Rwy 8R, 8L, 15R, 26R, 26L, 27 and 33L
HIRL all Rwy



CATEGORY	A	B	C	D
GLS	DA	295/18		200 (200-1/2)

SC-5, 22 FEB 2024 to 21 MAR 2024

SC-5, 22 FEB 2024 to 21 MAR 2024

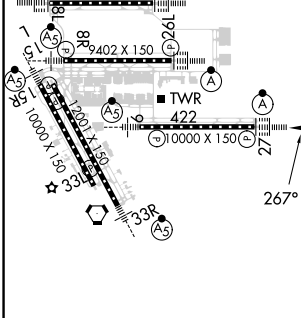
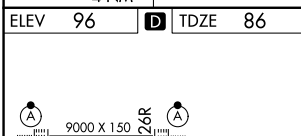
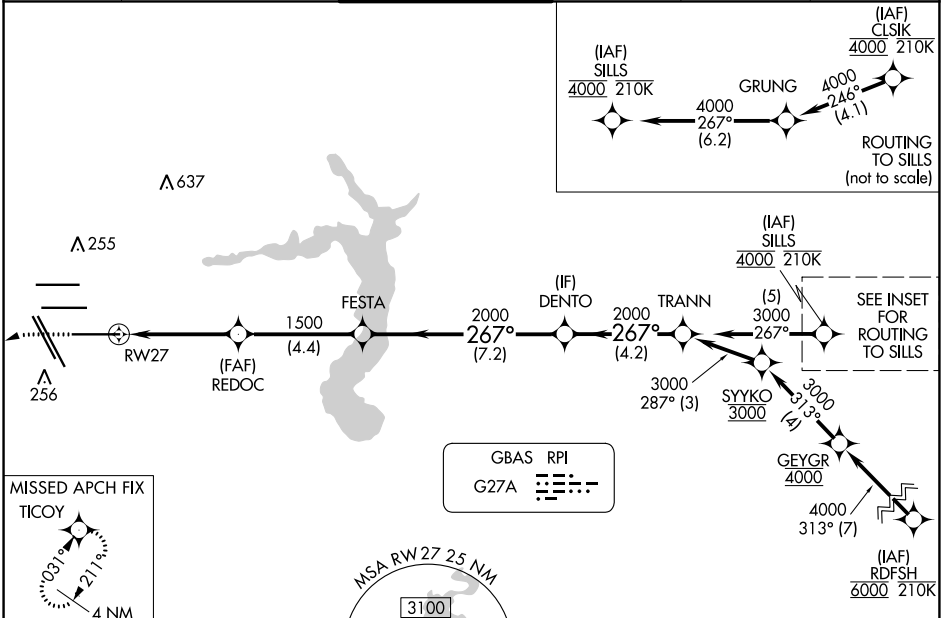
GBAS CH 22306 G27A	APP CRS 267°	Rwy Idg TDZE 86 Apt Elev 96	10000
--	------------------------	---	--------------

GLS RWY 27

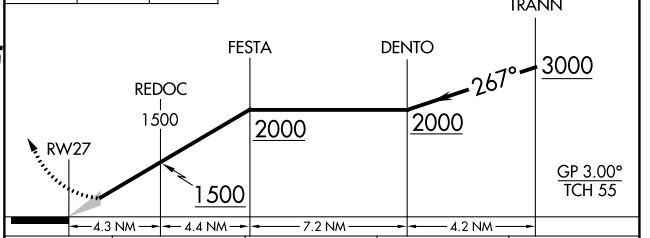
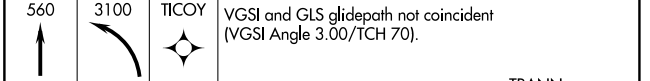
GEORGE BUSH INTCNL/HOUSTON (IAH)

RNP APCH - GPS.		ALSF-2 	MISSED APPROACH: Climb to 560 then climbing left turn to 3100 direct TICOY and hold.
Simultaneous approach authorized. Use of FD or AP required during simultaneous operations. Autopilot coupled approach NA below 286.			

D-ATIS 124.05	HOUSTON APP CON 120.05 379.1 EAST 124.35 316.15 WEST	HOUSTON TOWER 135.15 290.2	GND CON 118.575	CLNC DEL 128.1	CPDLC
-------------------------	--	--------------------------------------	---------------------------	--------------------------	-------



ELEV 96	D	TDZE 86
TDZ/CL Rwy 8R, 8L, 15R, 26R, 26L, 27 and 33L HIRL all Rwy		



CATEGORY	A	B	C	D
GLS DA	286/18 200 (200-1/2)			

SC-5, 22 FEB 2024 to 21 MAR 2024

SC-5, 22 FEB 2024 to 21 MAR 2024

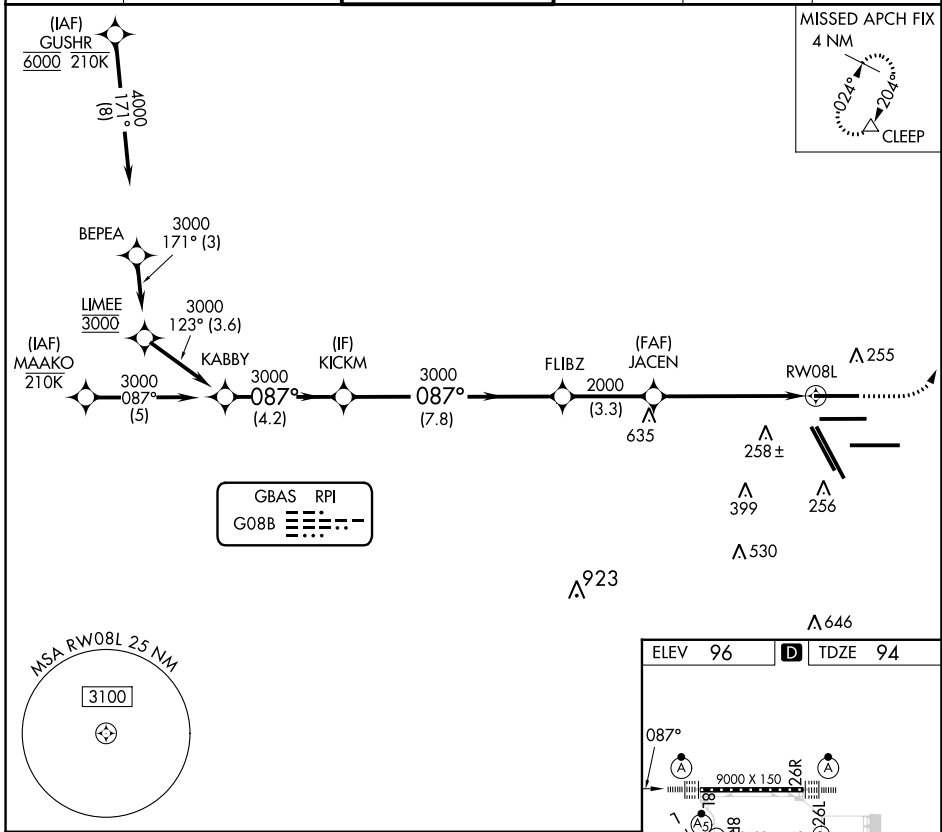
GBAS CH 21073 G08B	APP CRS 087°	Rwy Idg TDZE Apt Elev	9000 94 96
--	------------------------	-----------------------------	---------------------------------------

GLS RWY 8L

GEORGE BUSH INTCNL/HOUSTON (IAH)

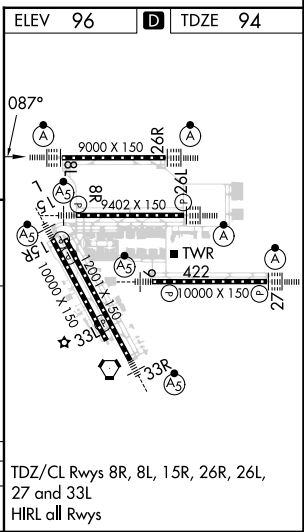
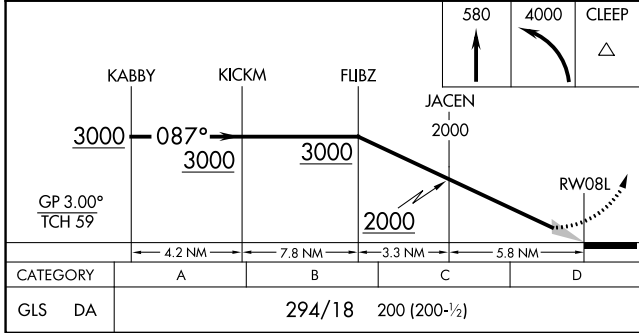
RNP APCH - GPS.	ALSF-2	MISSED APPROACH: Climb to 580 then climbing left turn to 4000 direct CLEEP and hold.
▼ Use of FD or AP required during simultaneous operations. Autopilot coupled ▲ NA approach NA below 294. Simultaneous approach authorized.		

D-ATIS 124.05	HOUSTON APP CON 120.05 379.1 EAST 124.35 316.15 WEST	HOUSTON TOWER 120.725 290.2	GND CON 118.575	CLNC DEL 128.1	CPDLC
-------------------------	--	---------------------------------------	---------------------------	--------------------------	-------



SC-5, 22 FEB 2024 to 21 MAR 2024

SC-5, 22 FEB 2024 to 21 MAR 2024



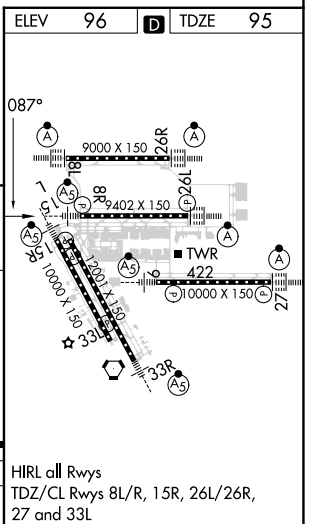
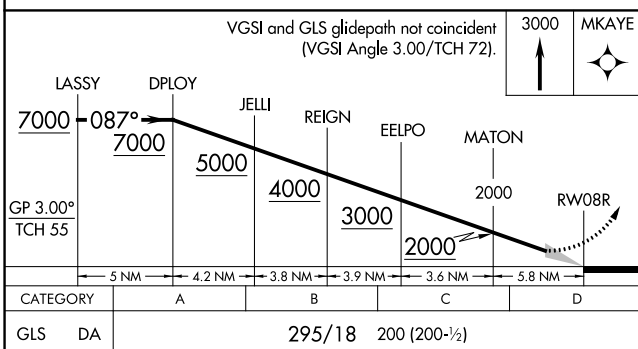
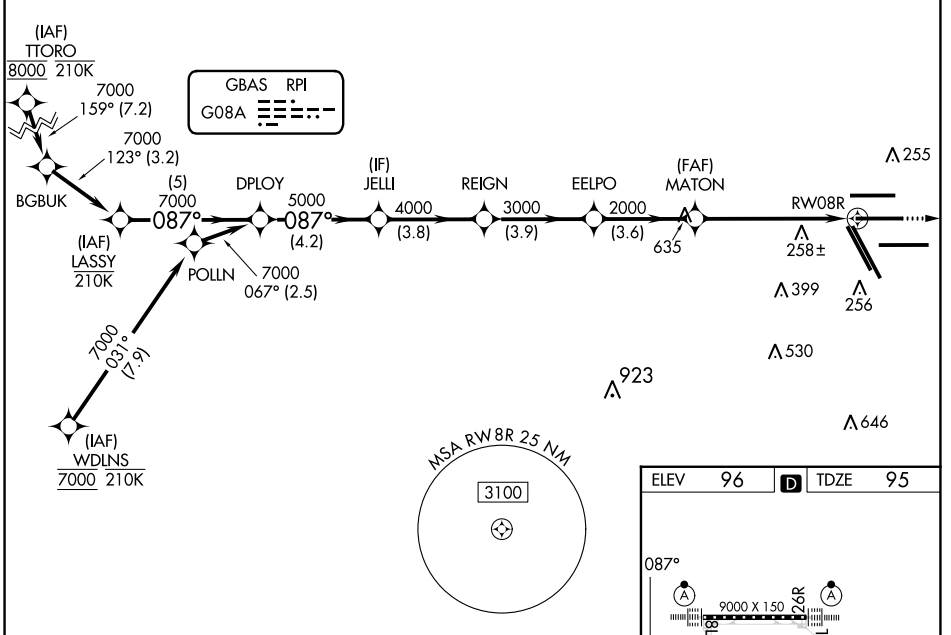
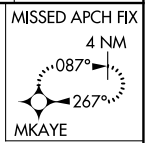
GBAS CH 20251 G08A	APP CRS 087°	Rwy Idg 9402 TDZE 95 Apt Elev 96
--	------------------------	---

GLS RWY 8R

GEORGE BUSH INTCNL/HOUSTON (IAH)

RNP APCH - GPS.		MALS R	MISSED APPROACH: Climb to 3000 direct MKAYE and hold.		
<p>Simultaneous approach authorized. Use of FD or AP required during simultaneous operations. Autopilot coupled approach NA below 295.</p>					

D-ATIS 124.05	HOUSTON APP CON 120.05 379.1 EAST 124.35 316.15 WEST	HOUSTON TOWER 125.35 290.2	GND CON 118.575	CLNC DEL 128.1	CPDLC
-------------------------	--	--------------------------------------	---------------------------	--------------------------	-------



SC-5, 22 FEB 2024 to 21 MAR 2024

SC-5, 22 FEB 2024 to 21 MAR 2024

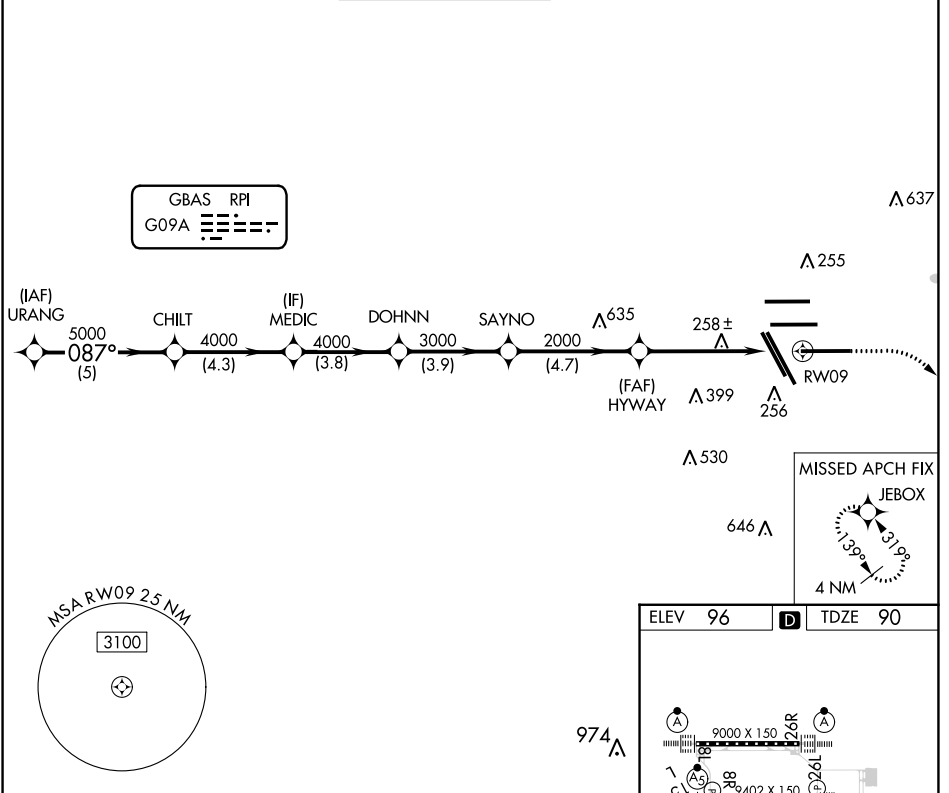
GBAS CH 21895 RPI G09A	APP CRS 087°	Rwy Idg 10000 TDZE 90 Apt Elev 96
--	------------------------	--

GLS RWY 9

GEORGE BUSH INTCNL/HOUSTON (IAH)

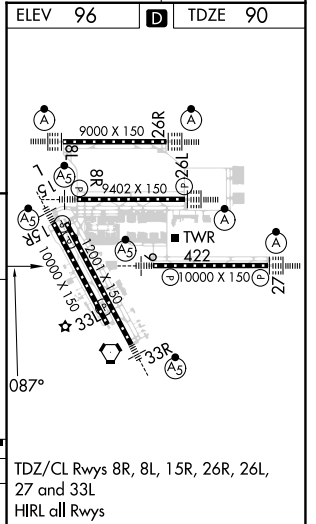
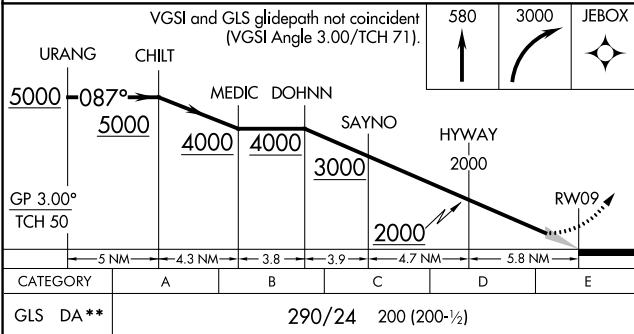
RNP APCH - GPS.		MALSR 	MISSED APPROACH: Climb to 580 then climbing right turn to 3000 direct JEBOX and hold.
<p> Simultaneous approach authorized. Use of FD or AP required during simultaneous operations. Autopilot coupled approach NA below 290. ** RVR 1800 authorized with use of FD or AP or HUD to DA.</p>			

D-ATIS 124.05	HOUSTON APP CON 120.05 379.1 EAST 124.35 316.15 WEST	HOUSTON TOWER 135.15 290.2	GND CON 118.575	CLNC DEL 128.1	CPDLC
-------------------------	--	--------------------------------------	---------------------------	--------------------------	-------



SC-5, 22 FEB 2024 to 21 MAR 2024

SC-5, 22 FEB 2024 to 21 MAR 2024



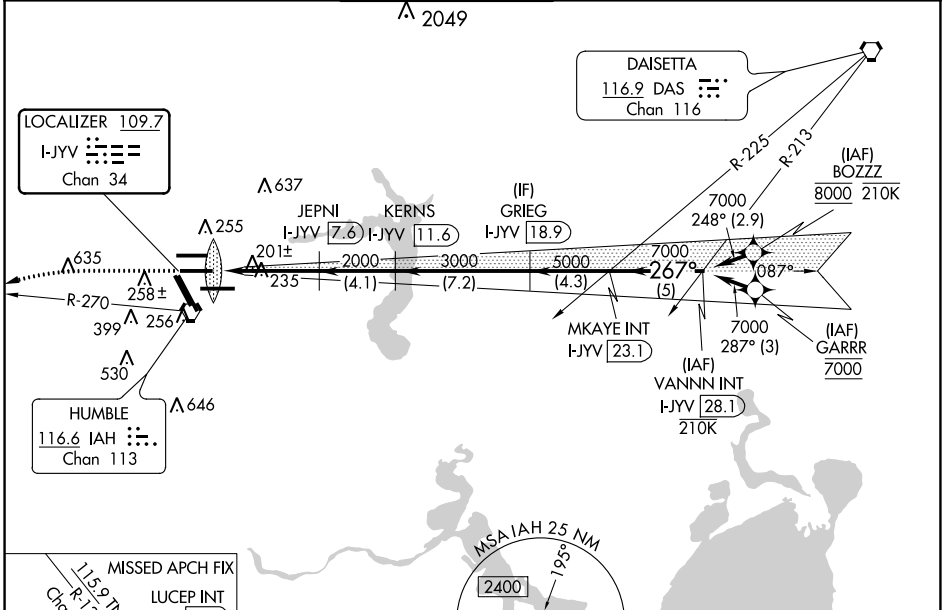
LOC/DME I-JYV 109.7 Chan 34	APP CRS 267°	Rwy Idg TDZE Apt Elev	9402 95 96
---	------------------------	-----------------------------	---------------------------------------

ILS RWY 26L (CAT II & III)

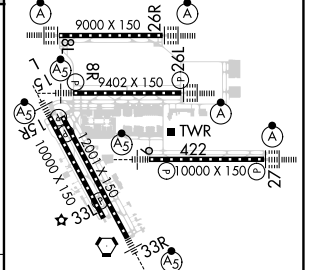
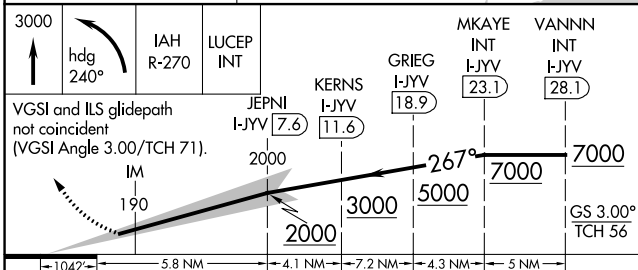
GEORGE BUSH INTCNL/HOUSTON (IAH)

DME required. From BOZZZ, GARRR: RNAV 1-GPS required.		ALSF-2 	MISSED APPROACH: Climb to 3000 then left turn heading 240° and IAH VORTAC R-270 to LUCEP INT/IAH 22.9 DME and hold.
Simultaneous approach authorized with Rwy 26R and Rwy 27. Cat II: RVR 1000 authorized with specific OPSPEC, MSPEC, or LOA approval and use of autoland or HUD to touchdown.			

D-ATIS 124.05	HOUSTON APP CON 120.05 379.1 EAST 124.35 316.15 WEST	HOUSTON TOWER 125.35 290.2	GND CON 118.575	CLNC DEL 128.1	CPDLC
-------------------------	--	--------------------------------------	---------------------------	--------------------------	-------



ELEV 96	D TDZE 95
---------	------------------



CATEGORY	A	B	C	D
S-ILS 26L	CAT II RA 100/12 100 DA 195			
S-ILS 26L	CAT III RVR 06			

CATEGORY II & III ILS - SPECIAL AIRCREW & AIRCRAFT CERTIFICATION REQUIRED

TDZ/CL Rwsy 8R, 8L, 15R, 26R, 26L, 27 and 33L
HIRL all Rwsy

SC-5, 22 FEB 2024 to 21 MAR 2024

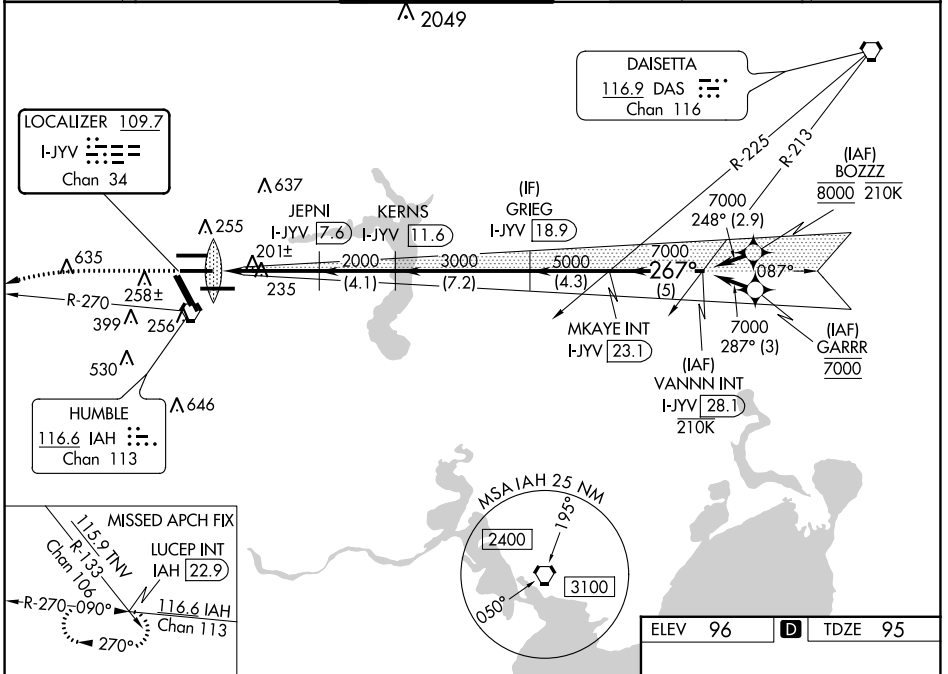
SC-5, 22 FEB 2024 to 21 MAR 2024

LOC/DME I-JYV 109.7 Chan 34	APP CRS 267°	Rwy Idg TDZE 95 Apt Elev 96	9402
---	------------------------	---	-------------

ILS RWY 26L (SA CAT I)

GEORGE BUSH INTCNL/HOUSTON (IAH)

DME required. From BOZZZ, GARRR: RNAV 1-GPS required.			ALSF-2 	MISSED APPROACH: Climb to 3000 then left turn heading 240° and IAH VORTAC R-270 to LUCEP INT/IAH 22.9 DME and hold.	
Simultaneous approach authorized with Rwy 26R and Rwy 27. Requires specific OPSPEC, MSPEC, or LOA approval and use of HUD to DH.					
D-ATIS 124.05	HOUSTON APP CON 120.05 379.1 EAST 124.35 316.15 WEST	HOUSTON TOWER 125.35 290.2	GND CON 118.575	CLNC DEL 128.1	CPDLC

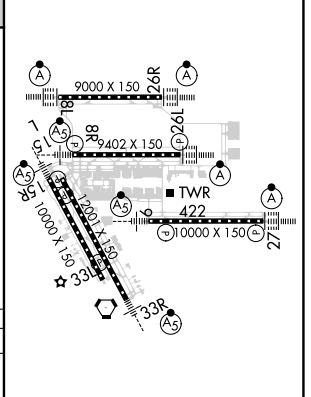


SC-5, 22 FEB 2024 to 21 MAR 2024

SC-5, 22 FEB 2024 to 21 MAR 2024

3000	hdg 240°	IAH R-270	LUCEP INT	VGSI and ILS glidepath not coincident (VGSI Angle 3.00/TCH 71).
<p>IM</p> <p>JEPNI I-JYV 7.6 KERN5 I-JYV 11.6 GRIEG I-JYV 18.9 MKAYE INT I-JYV 23.1 VANNN INT I-JYV 28.1</p> <p>2000 2000 267° 7000</p> <p>3000 5000</p> <p>GS 3.00° TCH 56</p> <p>1042 5.8 NM 4.1 NM 7.2 NM 4.3 NM 5 NM</p>				
CATEGORY	A	B	C	D
S-ILS 26L	RA 152/14 150 DA 245			

ELEV 96	D TDZE 95
---------	------------------



SA CATEGORY I ILS - SPECIAL AIRCREW & AIRCRAFT CERTIFICATION REQUIRED

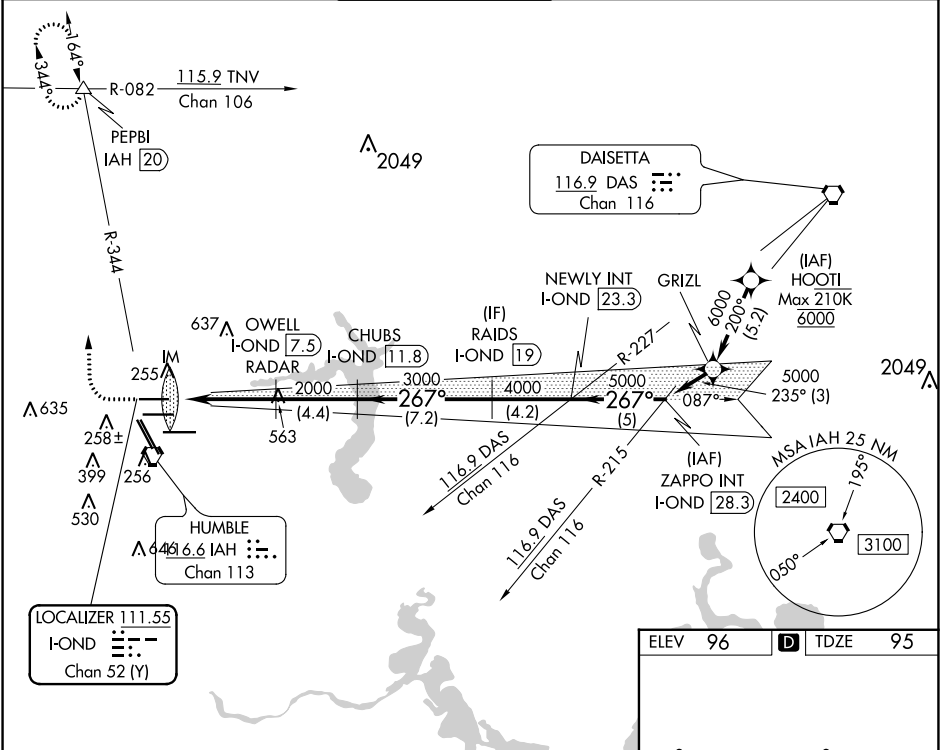
TDZ/CL Rwws 8R, 8L, 15R, 26R, 26L, 27 and 33L
HIRL all Rwws

LOC/DME I-OND 111.55 Chan 52 (Y)	APP CRS 267°	Rwy Idg TDZE 95 Apt Elev 96
--	------------------------	---

ILS RWY 26R (CAT II & III)

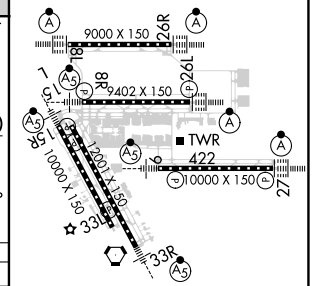
GEORGE BUSH INTCNL/HOUSTON (IAH)

DME equipped. From HOOIT: RNAV 1-GPS required.		ALSF-2 	MISSED APPROACH: Climb to 600 then climbing right turn to 3000 on IAH VORTAC R-344 to PEPBI INT/ IAH 20 DME and hold.		
<p>Simultaneous approach authorized with Rwy 26L and Rwy 27. Cat II: RVR 1000 authorized with specific OPSPEC, MSPEC or LOA approval and use of autoland or HUD to touchdown.</p>					
D-ATIS 124.05	HOUSTON APP CON 120.05 379.1 EAST 124.35 316.15 WEST	HOUSTON TOWER 120.725 290.2	GND CON 118.575	CLNC DEL 128.1	CPDLC



ELEV 96	D TDZE 95
---------	------------------

600	3000	PEPBI	OWELL I-OND 7.5	CHUBS I-OND 11.8	RAIDS I-OND 19	NEWLY INT I-OND 23.3	ZAPPO INT I-OND 28.3
↑	↻	△	RADAR				
	IM 195		2000	3000	4000	5000	GS 3.00° TCH 59
	5.8 NM	4.4 NM	7.2 NM	4.2 NM	5 NM		
CATEGORY	A	B	C	D			
S-ILS-26R	CAT II RA 99/12				100 DA 195		
S-ILS-26R	CAT III RVR 06						



CATEGORY II & III ILS - SPECIAL AIRCREW & AIRCRAFT CERTIFICATION REQUIRED

TDZ/CL Rwys 8R, 8L, 15R, 26R, 26L, 27 and 33L
HIRL all Rwys

SC-5, 22 FEB 2024 to 21 MAR 2024

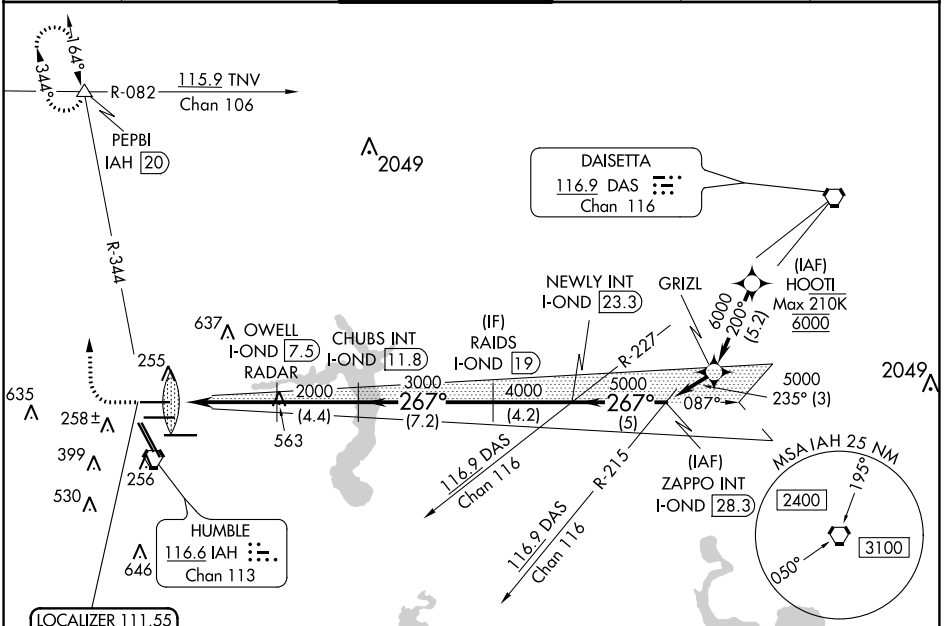
SC-5, 22 FEB 2024 to 21 MAR 2024

LOC/DME I-OND 111.55 Chan 52 (Y)	APP CRS 267°	Rwy Idg 9000 TDZE 95 Apt Elev 96
--	------------------------	---

ILS RWY 26R (SA CAT I)

GEORGE BUSH INTCNL/HOUSTON (IAH)

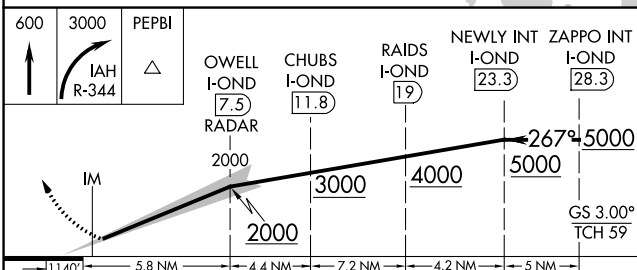
DME required. From HOOI: RNAV 1-GPS required.		ALSF-2 	MISSED APPROACH: Climb to 600 then climbing right turn to 3000 on IAH VORTAC R-344 to PEPBI INT/IAH 20 DME and hold.				
Simultaneous approach authorized with Rwy 26L and Rwy 27. Requires specific OPSPEC, MSPEC or LOA approval and use of HUDs to DH.		D-ATIS 124.05	HOUSTON APP CON 120.05 379.1 EAST 124.35 316.15 WEST	HOUSTON TOWER 120.725 290.2	GND CON 118.575	CLNC DEL 128.1	CPDLC



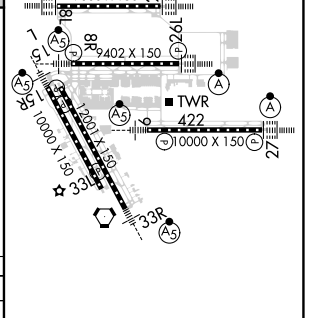
SC-5, 22 FEB 2024 to 21 MAR 2024

SC-5, 22 FEB 2024 to 21 MAR 2024

ELEV 96	D TDZE 95
---------	------------------



CATEGORY	A	B	C	D
S-ILS-26R	RA 157/14 150 DA 245			



SA CATEGORY I ILS - SPECIAL AIRCREW & AIRCRAFT CERTIFICATION REQUIRED

TDZ/CL Rwy's 8R, 8L, 15R, 26R, 26L, 27 and 33L
HIRL all Rwy's

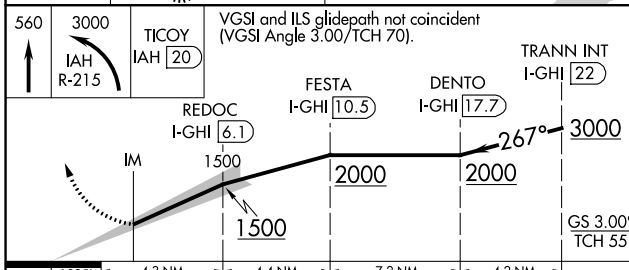
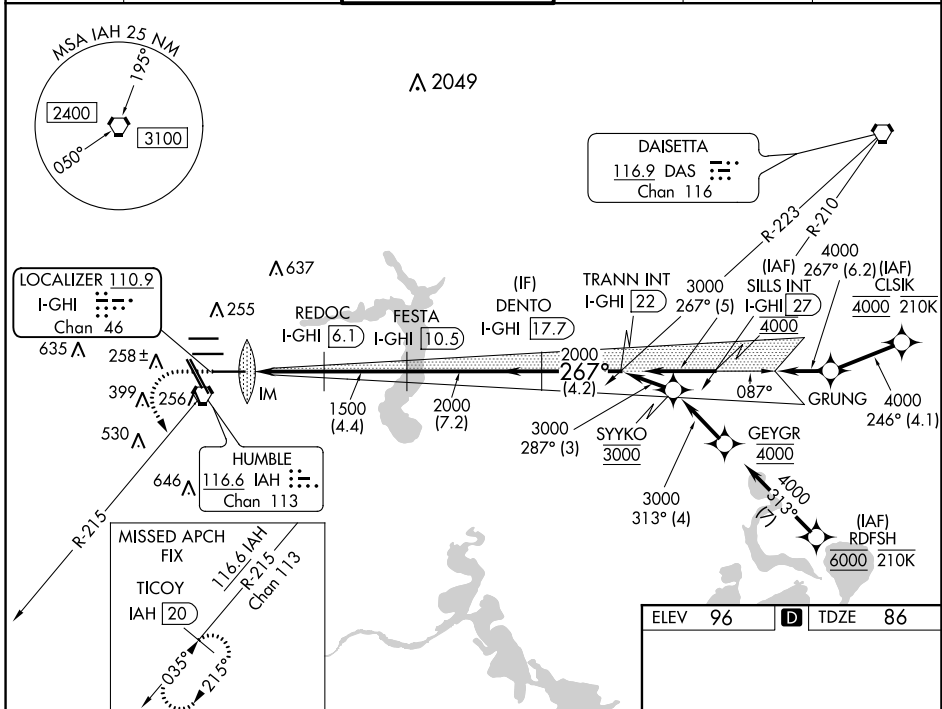
LOC/DME I-GHI 110.9 Chan 46	APP CRS 267°	Rwy Idg 10000 TDZE 86 Apt Elev 96
---	------------------------	--

ILS RWY 27 (CAT II & III)

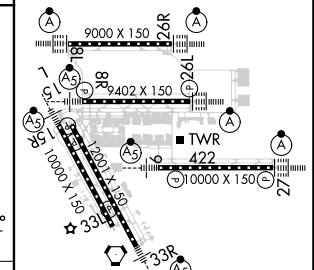
GEORGE BUSH INTCNL/HOUSTON (IAH)

RNAV 1-GPS or RADAR required for procedure entry. DME required.		ALSF-2 	MISSED APPROACH: Climb to 560 then climbing left turn to 3000 on IAH VORTAC R-215 to TICOY/IAH 20 DME and hold.
Simultaneous approach authorized. Use of FD or AP required during simultaneous operations. Cat II: RVR 1000 authorized with specific OPSPEC, MSPEC, or LOA approval and use of autoland or HUD to touchdown.			

D-ATIS 124.05	HOUSTON APP CON 120.05 379.1 EAST 124.35 316.15 WEST	HOUSTON TOWER 135.15 290.2	GND CON 118.575	CLNC DEL 128.1	CPDLC
-------------------------	--	--------------------------------------	---------------------------	--------------------------	-------



ELEV 96	D TDZE 86
---------	------------------



CATEGORY	A	B	C	D
S-ILS 27	CAT II RA 101/12 100 DA 186			
S-ILS 27	CAT III RVR 06			

TDZ/CL Rwws 8R, 8L, 15R, 26R, 26L, 27 and 33L
HIRL all Rwws

SC-5, 22 FEB 2024 to 21 MAR 2024

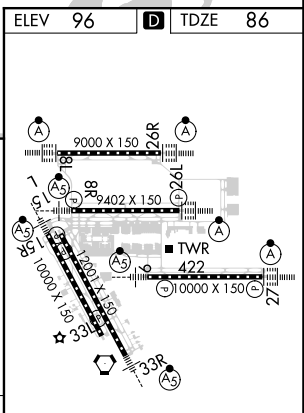
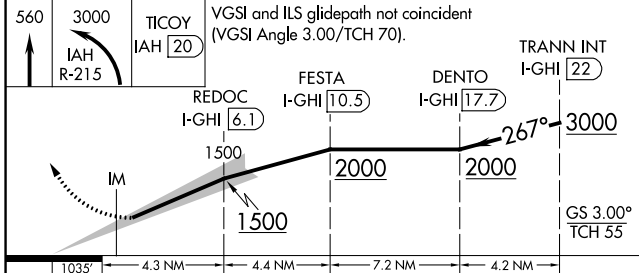
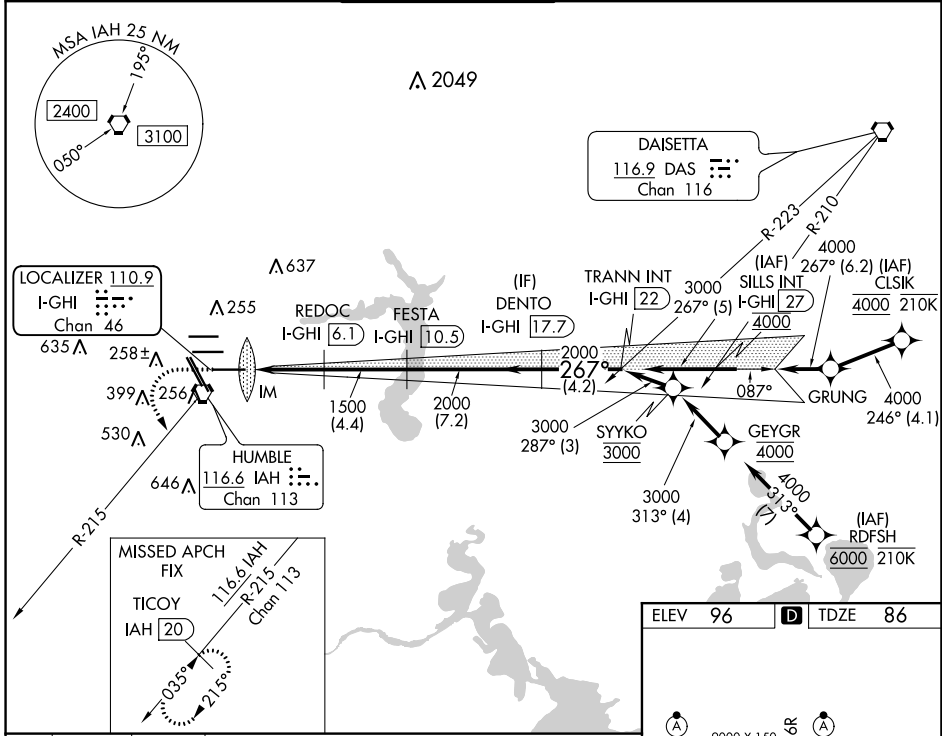
SC-5, 22 FEB 2024 to 21 MAR 2024

LOC/DME I-GHI 110.9 Chan 46	APP CRS 267°	Rwy Idg 10000 TDZE 86 Apt Elev 96
---	------------------------	--

ILS RWY 27 (SA CAT I)
GEORGE BUSH INTCNTL/HOUSTON (IAH)

RNAV 1-GPS or RADAR required for procedure entry. DME required.	ALSIF-2 	MISSED APPROACH: Climb to 560 then climbing left turn to 3000 on IAH VORTAC R-215 to TICOO/IAH 20 DME and hold.
Simultaneous approach authorized. Use of FD or AP required during simultaneous operations. Requires specific OPSPEC, MSPEC, or LOA approval and use of HUD to DH.		

D-ATIS 124.05	HOUSTON APP CON 120.05 379.1 EAST 124.35 316.15 WEST	HOUSTON TOWER 135.15 290.2	GND CON 118.575	CLNC DEL 128.1	CPDLC
-------------------------	--	--------------------------------------	---------------------------	--------------------------	-------



CATEGORY	A	B	C	D
S-ILS 27	RA 157/14 150 DA 236			
SA CATEGORY I ILS - SPECIAL AIRCREW & AIRCRAFT CERTIFICATION REQUIRED				

TDZ/CL Rwws 8R, 8L, 15R, 26R, 26L, 27 and 33L
HIRL all Rwws

SC-5, 22 FEB 2024 to 21 MAR 2024

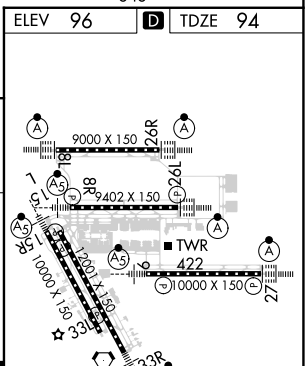
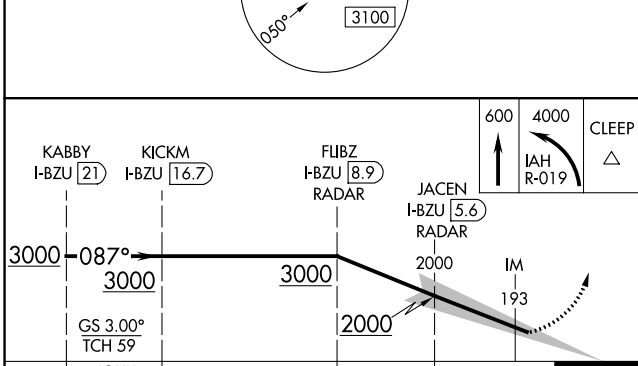
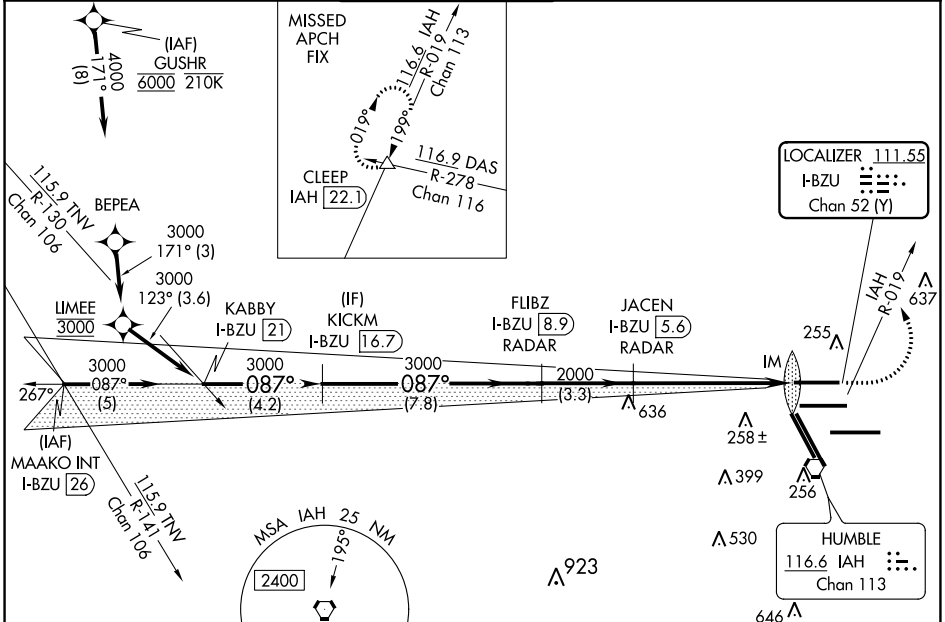
SC-5, 22 FEB 2024 to 21 MAR 2024

LOC/DME I-BZU 111.55 Chan 52 (Y)	APP CRS 087°	Rwy Idg TDZE Apt Elev	9000 94 96
--	------------------------	-----------------------------	---------------------------------------

ILS RWY 8L (CAT II & III)

GEORGE BUSH INTCNL/HOUSTON (IAH)

DME required. From GUSHR: RNAV 1-GPS required.		ALSIF-2 	MISSED APPROACH: Climb to 600 then climbing left turn to 4000 on IAH VORTAC R-019 to CLEEP INT/IAH 22.1 DME and hold.				
Simultaneous approach authorized with Rwy 8R and Rwy 9. CAT II: RVR 1000 authorized with specific OPSPEC, MSPEC, or LOA approval and use of autoland or HUD to touchdown.			ATIS 124.05	HOUSTON APP CON 120.05 379.1 EAST 124.35 316.15 WEST	HOUSTON TOWER 120.725 290.2	GND CON 118.575	CLNC DEL 128.1



CATEGORY	A	B	C	D
S-ILS 8L	CAT II RA 108/12 100 DA 194			
S-ILS 8L	CAT III RVR 06			

CATEGORY II & III ILS - SPECIAL AIRCREW & AIRCRAFT CERTIFICATION REQUIRED

TDZ/CL Rwy 8R, 8L, 15R, 26R, 26L, 27 and 33L
HIRL all Rwy's

SC-5, 22 FEB 2024 to 21 MAR 2024

SC-5, 22 FEB 2024 to 21 MAR 2024

LOC/DME I-BZU 111.55 Chan 52 (Y)	APP CRS 087°	Rwy Idg TDZE Apt Elev	9000 94 96
---	------------------------	-----------------------------	---------------------------------------

ILS RWY 8L (SA CAT I)

GEORGE BUSH INTCNL/HOUSTON (IAH)

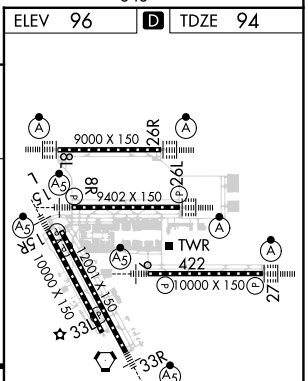
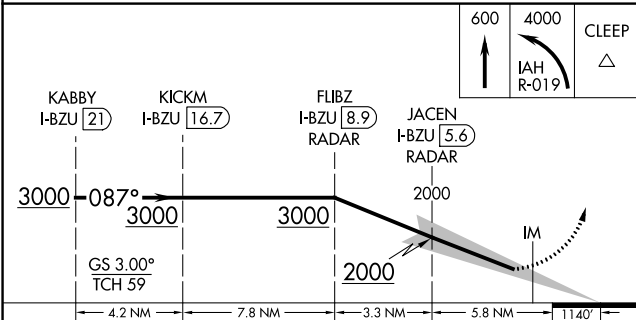
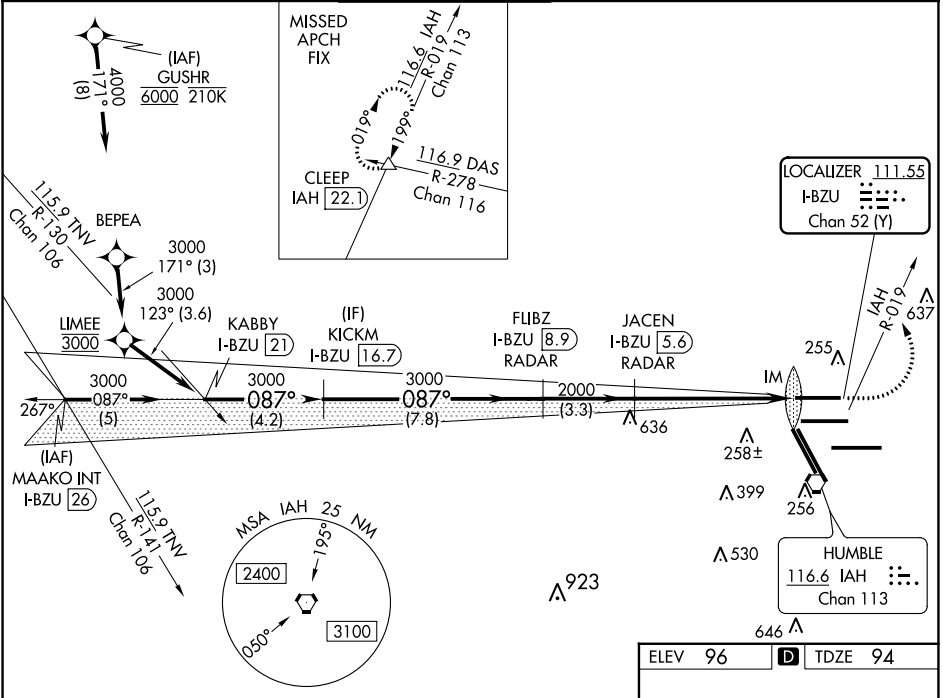
DME required. From GUSHR: RNAV 1-GPS required.

Simultaneous approach authorized with Rwy 8R and Rwy 9. Requires specific OPSPEC, MSPEC, or LOA approval and use of HUD to DH.

ALSF-2

MISSED APPROACH: Climb to 600 then climbing left turn to 4000 on IAH VORTAC R-019 to CLEEP INT/IAH 22.1 DME and hold.

ATIS 124.05	HOUSTON APP CON 120.05 379.1 EAST 124.35 316.15 WEST	HOUSTON TOWER 120.725 290.2	GND CON 118.575	CLNC DEL 128.1	CPDLC
-----------------------	--	---------------------------------------	---------------------------	--------------------------	-------



CATEGORY	A	B	C	D
S-ILS 8L	RA 158/14		150 DA 244	

SA CATEGORY I ILS - SPECIAL AIRCREW & AIRCRAFT CERTIFICATION REQUIRED

TDZ/CL Rwy's 8R, 8L, 15R, 26R, 26L, 27 and 33L
HIRL all Rwy's

SC-5, 22 FEB 2024 to 21 MAR 2024

SC-5, 22 FEB 2024 to 21 MAR 2024

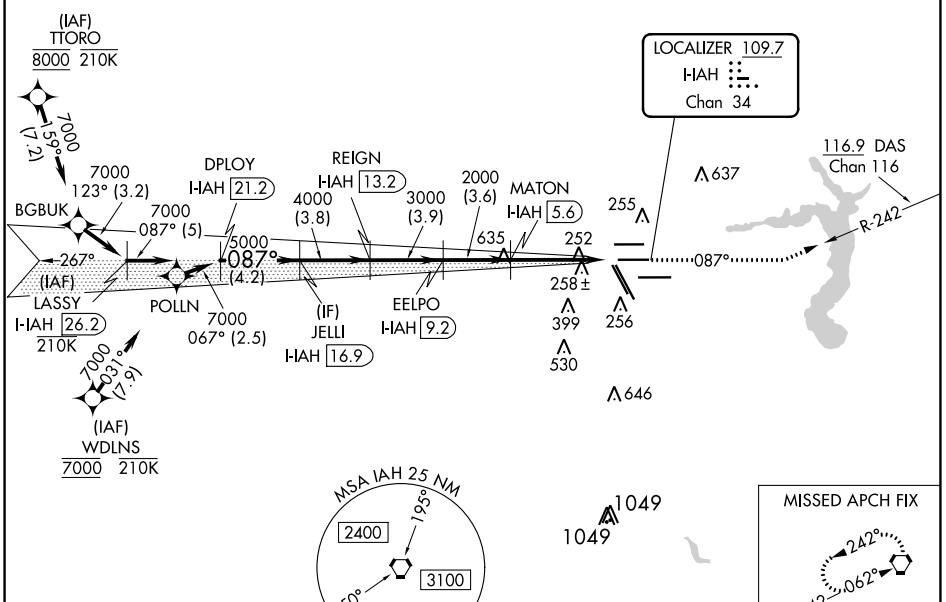
LOC/DME I-IAH 109.7 Chan 34	APP CRS 087°	Rwy Idg 9402 TDZE 95 Apt Elev 96
---	------------------------	---

ILS RWY 8R (SA CAT I & II)

GEORGE BUSH INTCNL/HOUSTON (IAH)

RNAV 1-GPS or RADAR required for procedure entry, DME.		MALSR 	MISSED APPROACH: Climb to 3000 on heading 087° and on DAS VORTAC R-242 to DAS VORTAC and hold.
Simultaneous approach authorized. SA CAT I: Requires specific OPSPEC, MSPEC, or LOA approval and use of HUD to DH. SA CAT II: Reduced lighting: requires specific OPSPEC, MSPEC, or LOA approval and use of autoland or HUD to touchdown.			

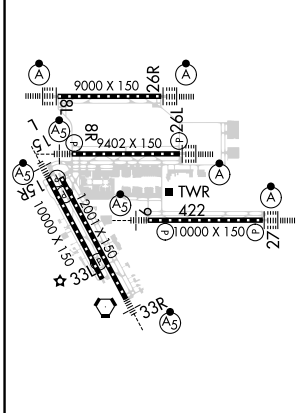
D-ATIS 124.05	HOUSTON APP CON 120.05 379.1 EAST 124.35 316.15 WEST	HOUSTON TOWER 125.35 290.2	GND CON 118.575	CLNC DEL 128.1	CPDLC A 2049
-------------------------	--	--------------------------------------	---------------------------	--------------------------	-----------------



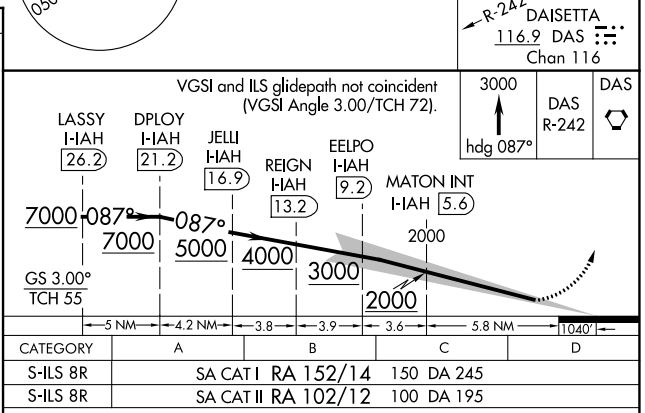
SC-5, 22 FEB 2024 to 21 MAR 2024

SC-5, 22 FEB 2024 to 21 MAR 2024

ELEV 96	D	TDZE 95
---------	----------	---------



TDZ/CL Rwy 8R, 8L, 15R, 26R, 26L, 27 and 33L
HIRL all Rwy



SA CATEGORY I and II ILS SPECIAL AIRCREW & AIRCRAFT CERTIFICATION REQUIRED

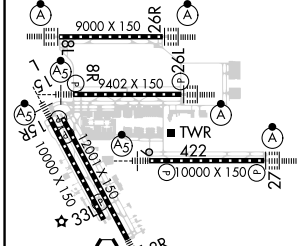
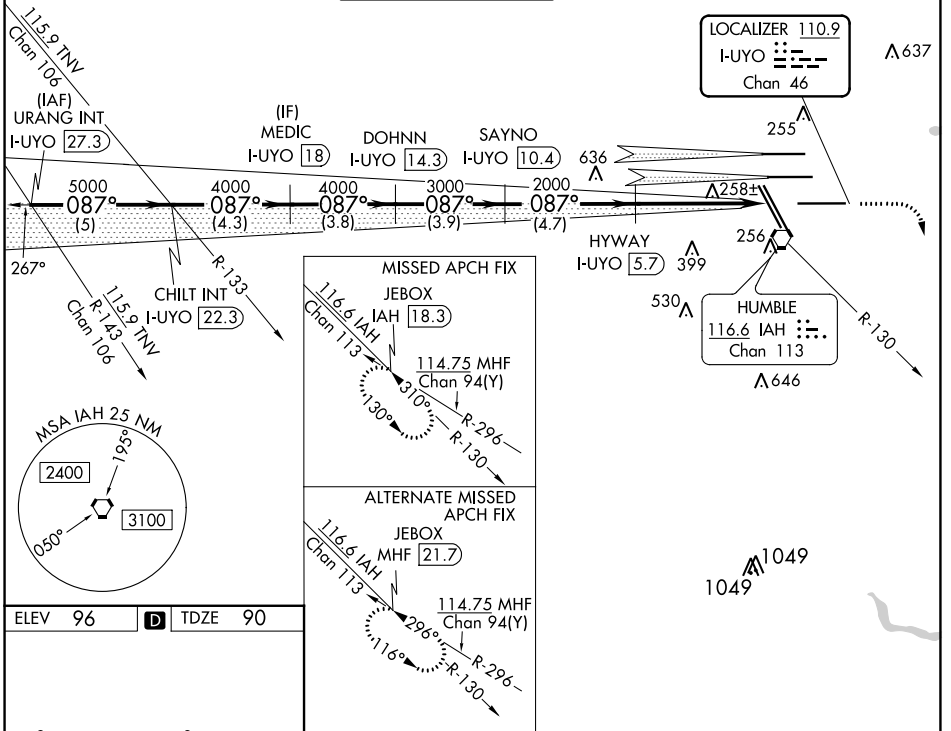
LOC/DME I-UYO 110.9 Chan 46	APP CRS 087°	Rwy Idg 10000 TDZE 90 Apt Elev 96
---	------------------------	--

ILS RWY 9 (SA CAT I & II)

GEORGE BUSH INTCNL/HOUSTON (IAH)

DME required. RADAR required for procedure entry.	MALS R	MISSED APPROACH: Climb to 580 then climbing right turn to 3000 on IAH VORTAC R-130 to JEBOX/IAH 18.3 DME and hold.
<p>Simultaneous approach authorized with Rwy 8L/R. SA CAT I: Requires specific OPSPEC, MSPEC, or LOA approval and use of AUTOLAND or HUD to touchdown. SA CAT II: Reduced lighting: requires specific OPSPEC, MSPEC, or LOA approval and use of AUTOLAND or HUD to touchdown.</p>		

D-ATIS 124.05	HOUSTON APP CON 120.05 379.1 EAST 124.35 316.15 WEST	HOUSTON TOWER 135.15 290.2	GND CON 118.575	CLNC DEL 128.1	CPDLC
-------------------------	--	--------------------------------------	---------------------------	--------------------------	-------



TDZ/CL Rwy 8R, 8L, 15R, 26R, 26L, 27 and 33L
HIRL all Rwy

URANG INT I-UYO 27.3	CHILT INT I-UYO 22.3	MEDIC I-UYO 18	DOHNN I-UYO 14.3	SAYNO I-UYO 10.4	HYWAY I-UYO 5.7	580	3000	IAH R-130	JEBOK
5000	5000	4000	4000	3000	2000				
GS 3.00° VGS and ILS glidepath not coincident (VGS Angle 3.00/TCH 71.)									
TCH 50									
-5 NM - 4.3 NM - 3.8 NM - 3.9 NM - 4.7 NM - 5.8 NM - 10.651									
CATEGORY	A		B		C		D		
S-ILS 9	SA CAT I RA 148/14		150		DA 240				
S-ILS 9	SA CAT II RA 98/12		100		DA 190				

SA CATEGORY I and II ILS SPECIAL AIRCREW & AIRCRAFT CERTIFICATION REQUIRED

SC-5, 22 FEB 2024 to 21 MAR 2024

SC-5, 22 FEB 2024 to 21 MAR 2024

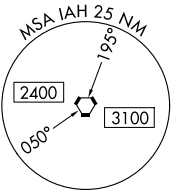
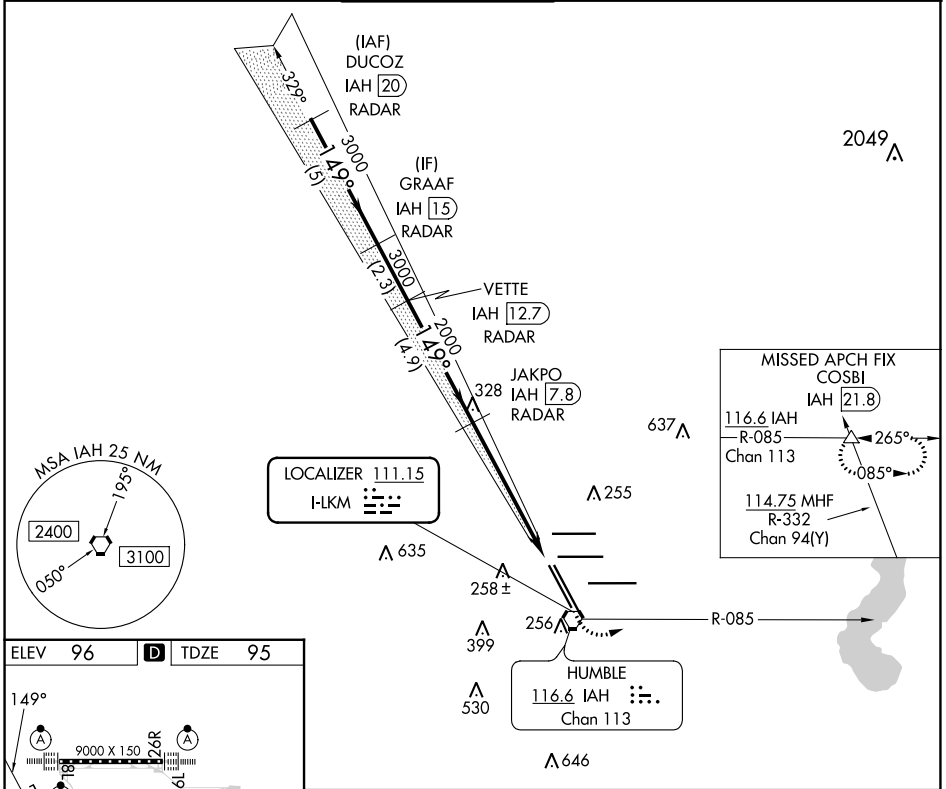
LOC I-LKM 111.15	APP CRS 149°	Rwy Idg 10000 TDZE 95 Apt Elev 96
----------------------------	------------------------	--

ILS or LOC RWY 15R

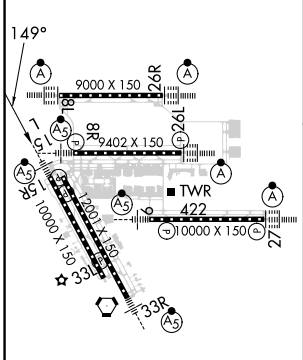
GEORGE BUSH INTCNL/HOUSTON (IAH)

RADAR required for procedure entry. DME or RADAR required.		MALS/R	MISSED APPROACH: Climb to 1000 then climbing left turn to 2000 on IAH VORTAC R-085 to COSBI INT/IAH 21.8 DME and hold.
DME from IAH VORTAC. Simultaneous reception of I-LKM and IAH DME required. For inop ALS, increase S-LS 15R Cat E visibility to RVR 4000, and S-LOC 15R Cat C/D/E visibility to 1 3/8 SM.			

D-ATIS 124.05	HOUSTON APP CON 120.05 379.1 EAST 124.35 316.15 WEST	HOUSTON TOWER 127.3 288.25	GND CON 121.7	CLNC DEL 128.1	CPDLC
-------------------------	--	--------------------------------------	-------------------------	--------------------------	-------



ELEV 96	D	TDZE 95
----------------	----------	----------------



TDZ/CL Rwy 8R, 15R, 26R, 26L, 27 and 33L
HIRL all Rwy

FAF to MAP 5.8 NM

Knots	60	90	120	150	180
Min:Sec	5:48	3:52	2:54	2:19	1:56

VGSi and ILS glidepath not coincident (VGSi Angle 3.00/TCH 71).		1000	2000	COSBI
DUCOZ IAH 20 RADAR	GRAAF IAH 15 RADAR	VETTE IAH 12.7 RADAR	JAKPO IAH 7.8 RADAR	IAH R-085
3000		149°	3000	3000
GS 3.00°			2000	2000
TCH 54				
-5 NM		-2.3 NM	-4.9 NM	-4.5 NM
CATEGORY	A	B	C	D
S-ILS 15R	295/18 200 (200-1/2)			
S-LOC 15R	580/24	485 (500-1/2)	580/50	485 (500-1)

SC-5, 22 FEB 2024 to 21 MAR 2024

SC-5, 22 FEB 2024 to 21 MAR 2024

LOC/DME I-JYV 109.7 Chan 34	APP CRS 267°	Rwy Idg 9402 TDZE 95 Apt Elev 96
---	------------------------	---

ILS or LOC RWY 26L

GEORGE BUSH INTCNL/HOUSTON (IAH)

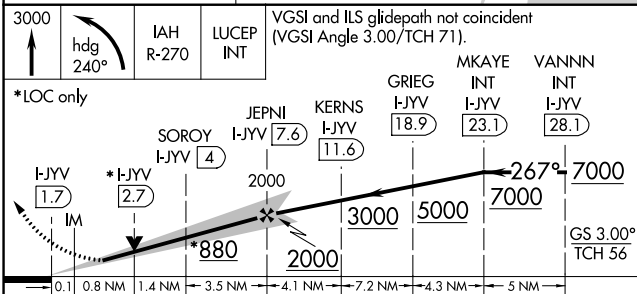
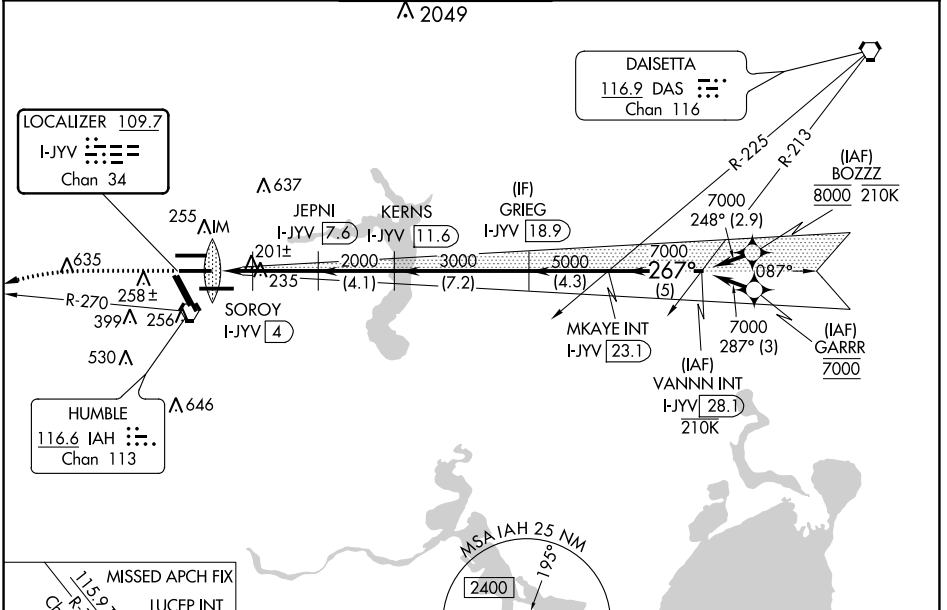
DME required. From BOZZZ, GARRR: RNAV 1-GPS required.

⚠ Simultaneous approach authorized with Rwy 26R and Rwy 27. For inop ALS, increase S-ILS 26L Cat E visibility to RVR 4000, S-LOC 26L Cat C/D/E visibility to RVR 5000.

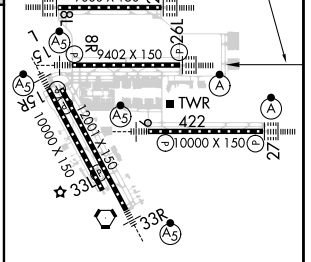
ALSF-2

MISSED APPROACH: Climb to 3000 then left turn heading 240° and IAH VORTAC R-270 to LUCEP INT/IAH 22.9 DME and hold.

D-ATIS 124.05	HOUSTON APP CON 120.05 379.1 EAST 124.35 316.15 WEST	HOUSTON TOWER 125.35 290.2	GND CON 118.575	CLNC DEL 128.1	CPDLC
-------------------------	--	--------------------------------------	---------------------------	--------------------------	-------



ELEV 96	D TDZE 95
---------	------------------



CATEGORY	A	B	C	D	E
S-ILS 26L	295/18		200 (200-½)		
S-LOC 26L	460/24	365 (400-½)	460/35	365 (400-¾)	

TDZ/CL Rwy 8R, 8L, 15R, 26R, 26L, 27 and 33L
HIRL all Rwys

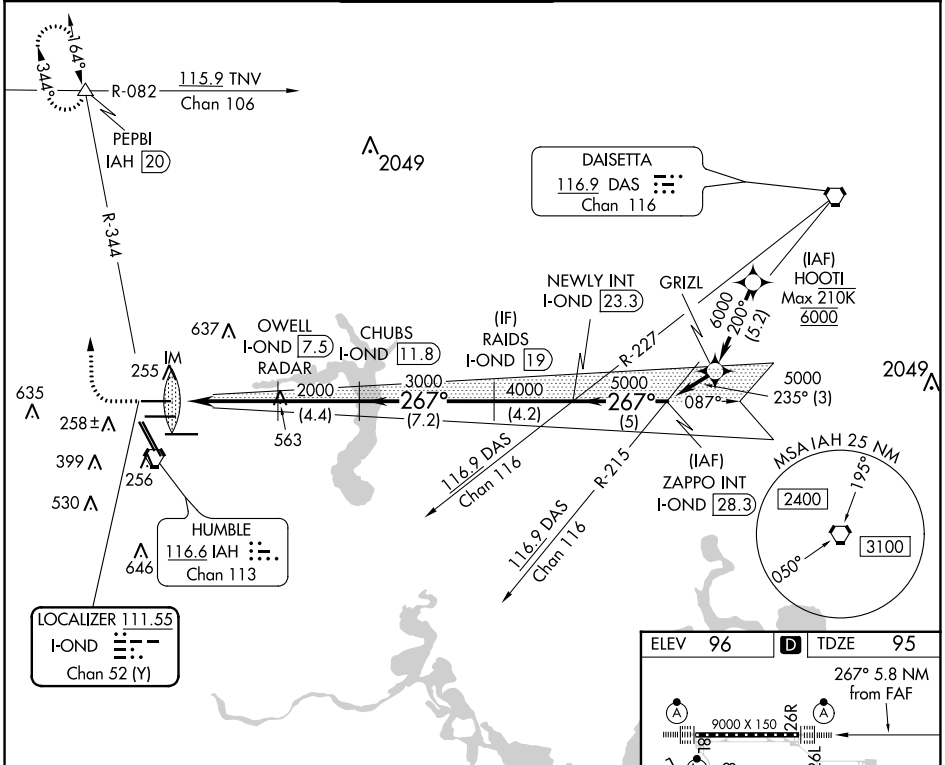
FAF to MAP 5.8 NM					
Knots	60	90	120	150	180
Min:Sec	5:48	3:52	2:54	2:19	1:56

LOC/DME I-OND 111.55 Chan 52 (Y)	APP CRS 267°	Rwy Idg 9000 TDZE 95 Apt Elev 96
--	------------------------	---

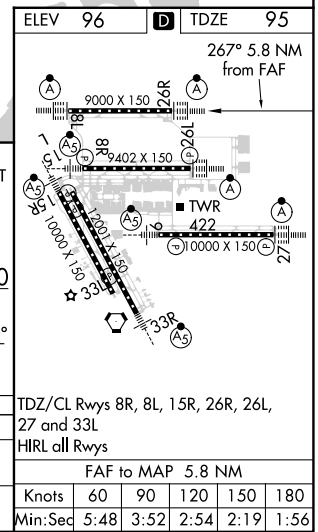
ILS or LOC RWY 26R

GEORGE BUSH INTCNL/HOUSTON (IAH)

DME required. From HOOTI: RNAV 1-GPS required.		ALSIF-2 	MISSED APPROACH: Climb to 600 then climbing right turn to 3000 on IAH VORTAC R-344 to PEPBI INT/IAH 20 DME and hold.				
Simultaneous approach authorized with Rwy 26L and Rwy 27. For inop ALS, increase S-ILS 26R Cat E visibility to RVR 4000, and S-LOC 26R Cat C/D/E visibility to 1 1/8 SM.		D-ATIS 124.05	HOUSTON APP CON 120.05 379.1 EAST 124.35 316.15 WEST	HOUSTON TOWER 120.725 290.2	GND CON 118.575	CLNC DEL 128.1	CPDLC



600	3000	PEPBI	OWELL I-OND 7.5	CHUBS I-OND 11.8	RAIDS I-OND 19	NEWLY INT I-OND 23.3	ZAPPO INT I-OND 28.3
↑	↷	IAH R-344	RADAR				
* LOC only							
I-OND 1.7	I-OND 2.9		2000	3000	4000	5000	GS 3.00° TCH 59
0.1	1.1	4.6 NM	4.4 NM	7.2 NM	4.2 NM	5 NM	
CATEGORY	A	B	C	D	E		
S-ILS 26R	295/18		200 (200-1/2)				
S-LOC 26R	580/24	485 (500-1/2)	580/50		485 (500-1)		



SC-5, 22 FEB 2024 to 21 MAR 2024

SC-5, 22 FEB 2024 to 21 MAR 2024

LOC/DME I-GHI 110.9 Chan 46	APP CRS 267°	Rwy Idg 10000 TDZE 86 Apt Elev 96
---	------------------------	--

ILS or LOC RWY 27

GEORGE BUSH INTCNL/HOUSTON (IAH)

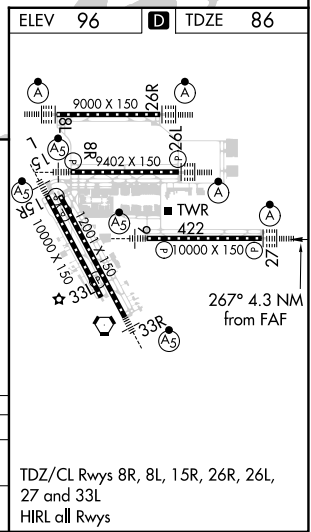
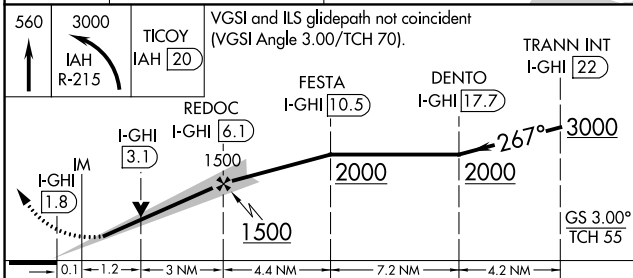
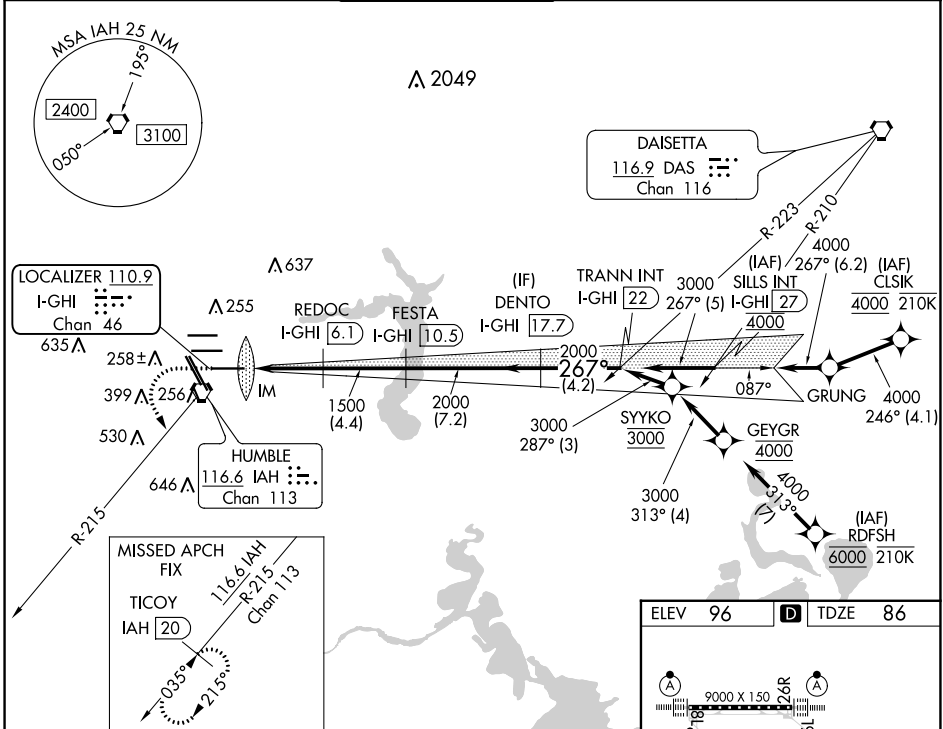
RNAV 1-GPS or RADAR required for procedure entry.
DME required.

Simultaneous approach authorized. Use of FD or AP required during simultaneous operations. For inop ALS, increase S-ILS 27 Cat E visibility to RVR 4000 and S-LOC 27 Cat C-E visibility to 1 1/8 SM.

ALSF-2

MISSED APPROACH: Climb to 560 then climbing left turn to 3000 on IAH VORTAC R-215 to TICOY/IAH 20 DME and hold.

D-ATIS 124.05	HOUSTON APP CON 120.05 379.1 EAST 124.35 316.15 WEST	HOUSTON TOWER 135.15 290.2	GND CON 118.575	CLNC DEL 128.1	CPDLC
-------------------------	--	--------------------------------------	---------------------------	--------------------------	-------



CATEGORY	A	B	C	D	E
S-ILS 27	286/18 200 (200-1/2)				
S-LOC 27	560/24	474 (500-1/2)	560/50 474 (500-1)		

SC-5, 22 FEB 2024 to 21 MAR 2024

SC-5, 22 FEB 2024 to 21 MAR 2024

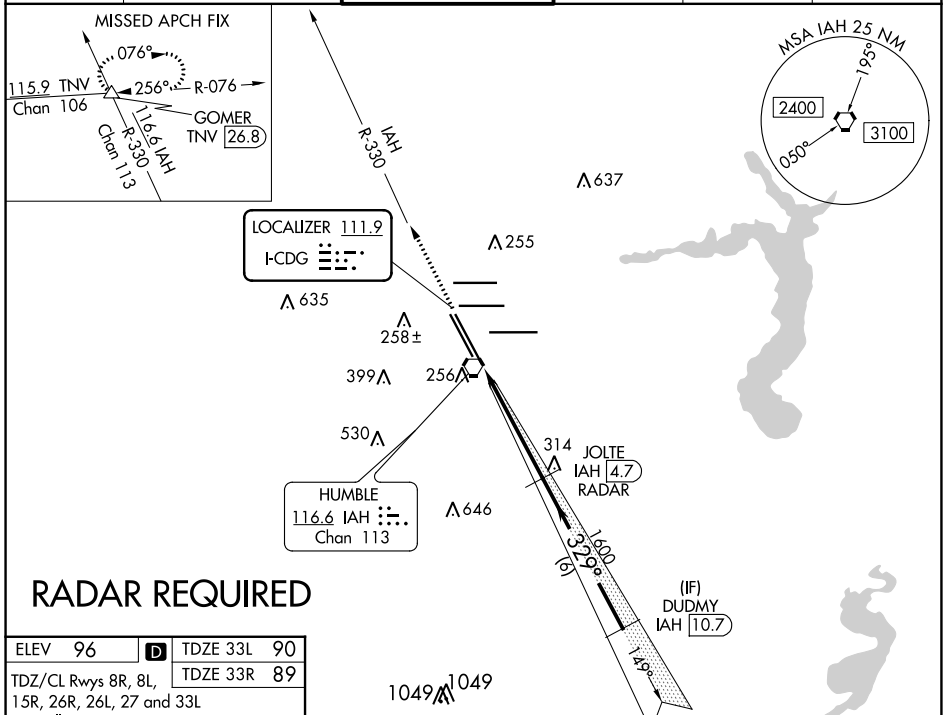
LOC I-CDG 111.9	APP CRS 329°	Rwy 33R Idg 12001 TDZE 89 Apt Elev 96	Rwy 33L Idg 10000 TDZE 90 Apt Elev 96
---------------------------	------------------------	--	--

ILS or LOC RWY 33R

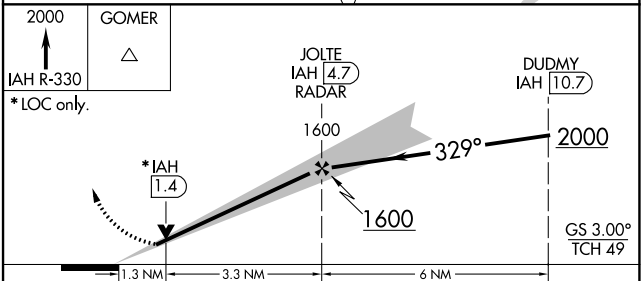
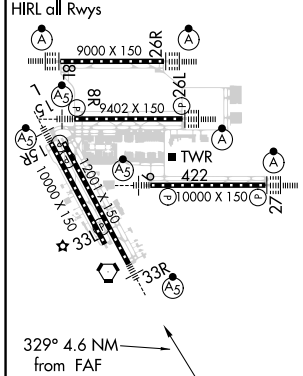
GEORGE BUSH INTCNL/HOUSTON (IAH)

<p>▼ DME from IAH VORTAC. Simultaneous reception of I-CDG and IAH DME Required. For inop MALS R, increase S-ILS 33R Cat E visibility to RVR 4000 and S-LOC 33R Cat E visibility to 1 1/2 mile. DME or RADAR Required. #RVR 1800 authorized with the use of FD or AP or HUD to DA.</p>	<p>MALS R </p>	<p>MISSED APPROACH: Climb to 2000 on IAH VORTAC R-330 to GOMER INT/TNV 26.8 DME and hold.</p>
--	--------------------	---

D-ATIS 124.05	HOUSTON APP CON 120.05 379.1 EAST 124.35 316.15 WEST	HOUSTON TOWER 127.3 288.25	GND CON 121.7	CLNC DEL 128.1	CPDLC
-------------------------	--	--------------------------------------	-------------------------	--------------------------	-------



ELEV 96	D	TDZE 33L 90
TDZ/CL Rwys 8R, 8L, 15R, 26R, 26L, 27 and 33L		TDZE 33R 89
HIRL all Rwys		



	CATEGORY				
	A	B	C	D	E
S-ILS 33R	# 289/24 200 (200-1/2)				
S-LOC 33R	540/24	451 (500-1/2)	540/45 451 (500-7/8)		
SIDESTEP Rwy 33L	540-1	450 (500-1)	540-1 1/2 450 (500-1 1/2)	540-2 450 (500-2)	NA

SC-5, 22 FEB 2024 to 21 MAR 2024

SC-5, 22 FEB 2024 to 21 MAR 2024

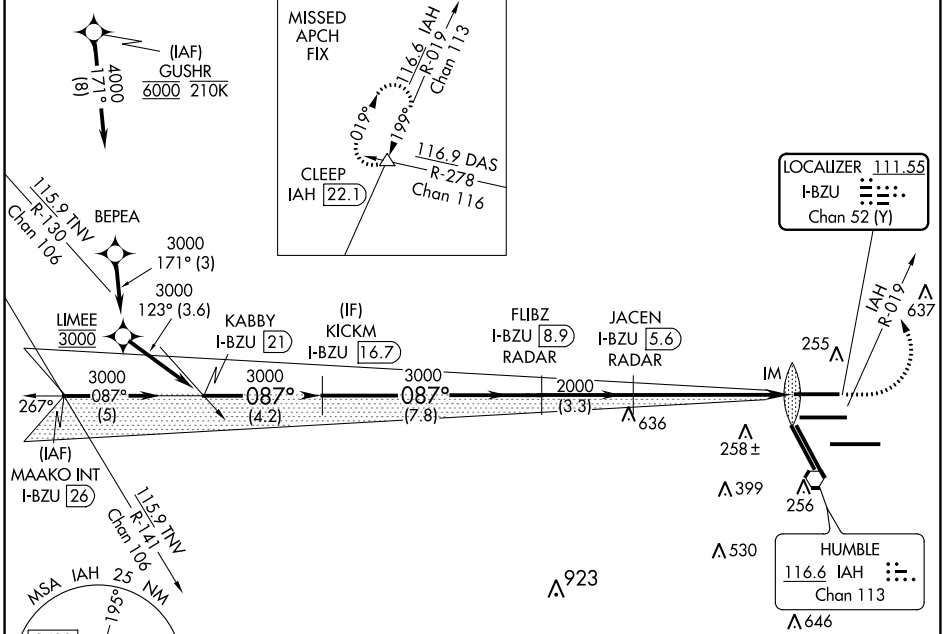
LOC/DME I-BZU 111.55 Chan 52 (Y)	APP CRS 087°	Rwy Idg TDZE Apt Elev	9000 94 96
---	------------------------	-----------------------------	---------------------------------------

ILS or LOC RWY 8L

GEORGE BUSH INTCNL/HOUSTON (IAH)

DME required. From GUSHR. RNAV 1-GPS required.		ALSF-2 	MISSED APPROACH: Climb to 600 then climbing left turn to 4000 on IAH VORTAC R-019 to CLEEP INT/IAH 22.1 DME and hold.
Simultaneous approach authorized with Rwy 8R and Rwy 9.			

ATIS 124.05	HOUSTON APP CON 120.05 379.1 EAST 124.35 316.15 WEST	HOUSTON TOWER 120.725 290.2	GND CON 118.575	CLNC DEL 128.1	CPDLC
-----------------------	--	---------------------------------------	---------------------------	--------------------------	-------

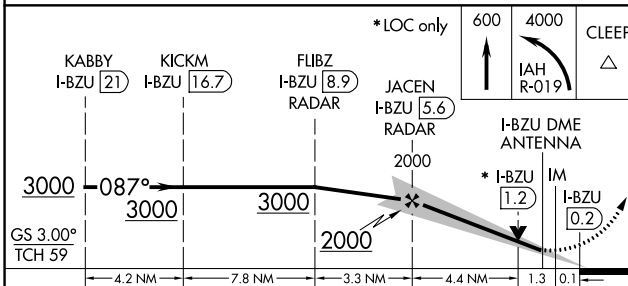
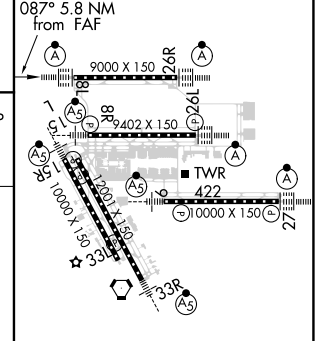


SC-5, 22 FEB 2024 to 21 MAR 2024

SC-5, 22 FEB 2024 to 21 MAR 2024



ELEV 96	TDZE 94
---------	---------



TDZ/CL Rwys 8R, 8L, 15R, 26R, 26L, 27 and 33L					
HIRL all Rwys					
FAF to MAP 5.8 NM					
Knots	60	90	120	150	180
Min:Sec	5:48	3:52	2:54	2:19	1:56

CATEGORY	A	B	C	D	E
S-ILS 8L	294/18		200 (200-½)		
S-LOC 8L	600/24	506 (600-½)	600/55	506 (600-1)	

LOC/DME I-IAH 109.7 Chan 34	APP CRS 087°	Rwy Idg 9402 TDZE 95 Apt Elev 96
---	------------------------	---


ILS or LOC RWY 8R

GEORGE BUSH INTCNL/HOUSTON (IAH)

RNAV 1-GPS or RADAR required for procedure entry, DME.

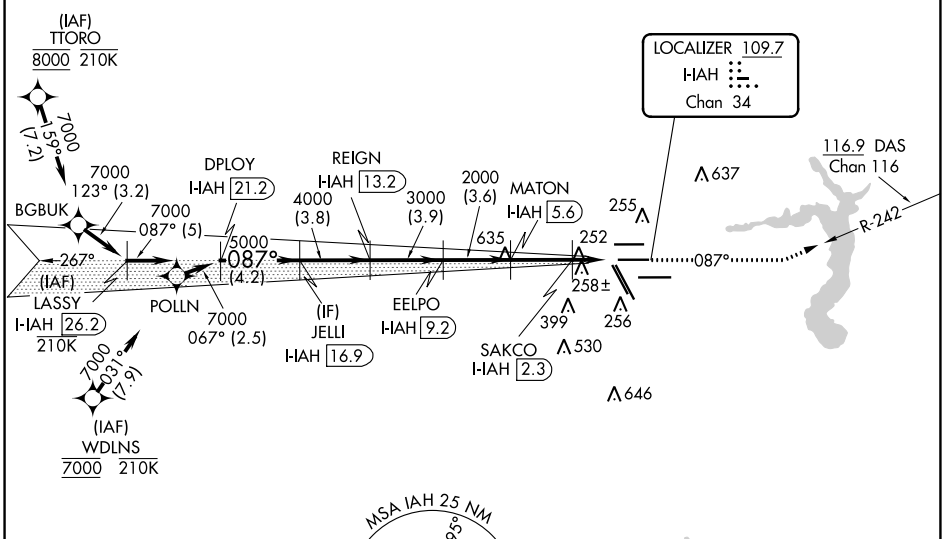
Simultaneous approach authorized. For inop ALS, increase S-LOC 8R Cat C/D/E visibility to 1 $\frac{1}{2}$ SM. For inop ALS, increase S-ILS 8R Cat E visibility to RVR 4000.

MALSR



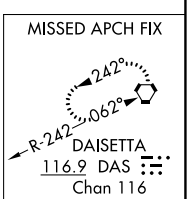
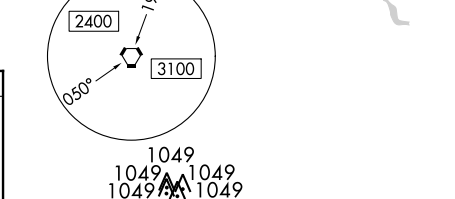
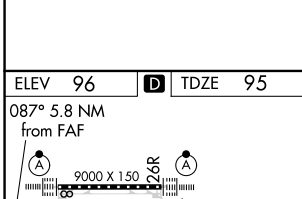
MISSED APPROACH: Climb to 3000 on heading 087° and on DAS VORTAC R-242 to DAS VORTAC and hold.

D-ATIS 124.05	HOUSTON APP CON 120.05 379.1 EAST 124.35 316.15 WEST	HOUSTON TOWER 125.35 290.2	GND CON 118.575	CLNC DEL 128.1	CPDLC Δ 2049
-------------------------	--	--------------------------------------	---------------------------	--------------------------	------------------------



SC-5, 22 FEB 2024 to 21 MAR 2024

SC-5, 22 FEB 2024 to 21 MAR 2024



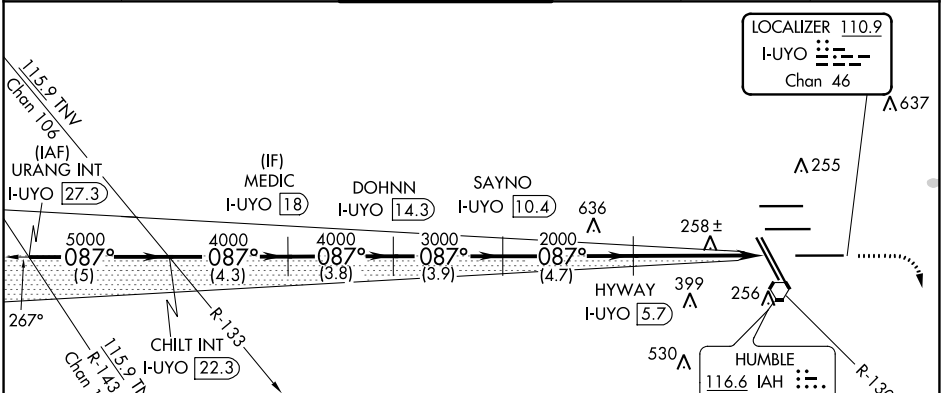
ELEV 96	D	TDZE 95
087° 5.8 NM from FAF		
TDZ/CL Rwy 8R, 8L, 15R, 26R, 26L, 27 and 33L HIRL all Rwy		

VGS and ILS glidepath not coincident (VGS Angle 3.00/TCH 72).					
LASSY I-IAH 26.2	DPLY I-IAH 21.2	JELLI I-IAH 16.9	REIGN I-IAH 13.2	EELPO I-IAH 9.2	MATON I-IAH 5.6
7000-087° → 7000 → 5000 → 4000 → 3000 → 2000 → *940 → 2000 → 1000 → 500 → 200					
GS 3.00° TCH 55					
-5 NM -4.2 NM -3.8 -3.9 -3.6 -3.3 NM -1.3 NM 1.2 NM					
CATEGORY	A	B	C	D	E
S-ILS 8R	295/18		200 (200- $\frac{1}{2}$)		
S-LOC 8R	560/24	465 (500- $\frac{1}{2}$)	560/50	465 (500-1)	

LOC/DME I-UYO 110.9 Chan 46	APP CRS 087°	Rwy Idg 10000 TDZE 90 Apt Elev 96
---	------------------------	--

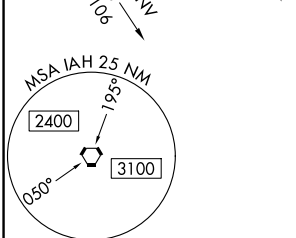
ILS or LOC RWY 9
GEORGE BUSH INTCNL/HOUSTON (IAH)

DME required. RADAR required for procedure entry.		MALSR 	MISSED APPROACH: Climb to 580 then climbing right turn to 3000 on IAH VORTAC R-130 to JEBOX/IAH 18.3 DME and hold.		
▼ Simultaneous approach authorized with Rwy 8L/R. # RVR 1800 authorized with the use of FD or AP or HUD to DA.					
D-ATIS 124.05	HOUSTON APP CON 120.05 379.1 EAST 124.35 316.15 WEST	HOUSTON TOWER 135.15 290.2	GND CON 118.575	CLNC DEL 128.1	CPDLC

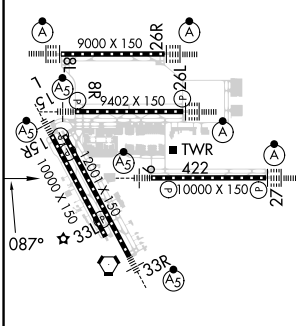


SC-5, 22 FEB 2024 to 21 MAR 2024

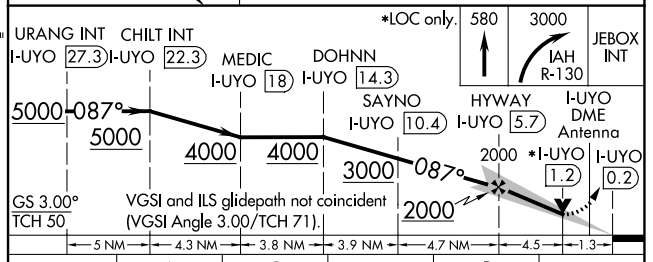
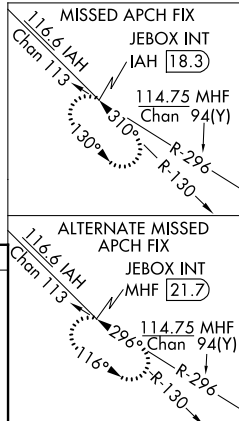
SC-5, 22 FEB 2024 to 21 MAR 2024



ELEV 96	D	TDZE 90
---------	----------	---------



TDZ/Cl Rws 8R, 8L, 15R, 26R, 26L, 27 and 33L
HIRL all Rws



FAF to MAP 5.8 NM					
Knots	60	90	120	150	180
Min:Sec	5:48	3:52	2:54	2:19	1:56
CATEGORY	A	B	C	D	E
S-ILS 9 #	290/24		200 (200-½)		
S-LOC 9	580/24	490 (500-½)	580/50 490 (500-1)		

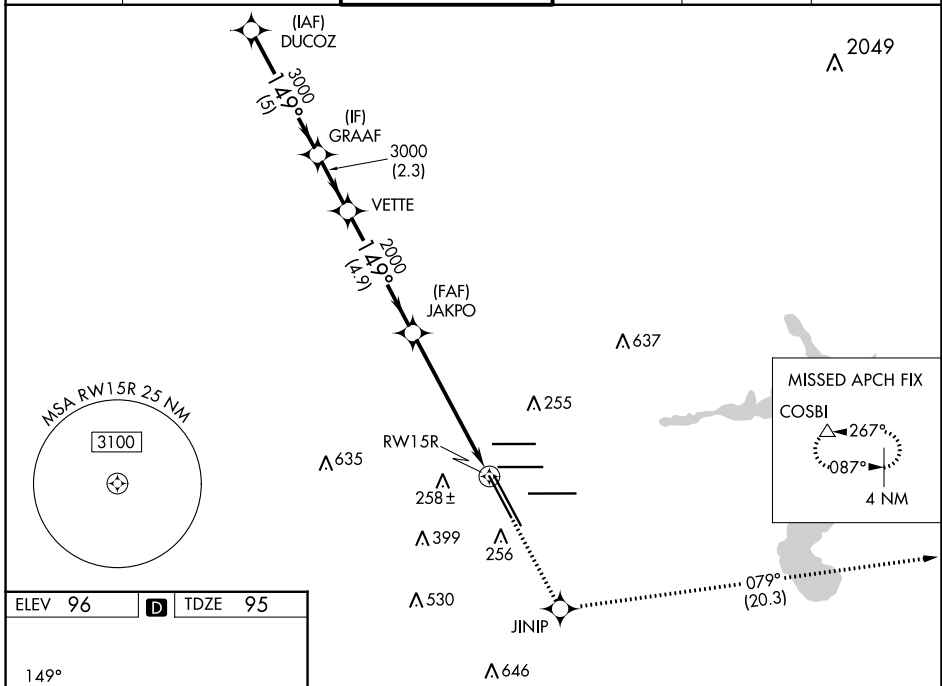
WAAS CH 97599	APP CRS 149°	Rwy Idg 10000 TDZE 95 Apt Elev 96
-------------------------	------------------------	--

RNAV (GPS) RWY 15R

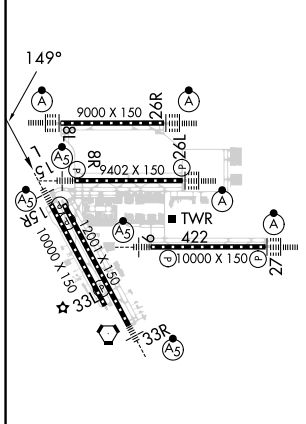
GEORGE BUSH INTCNL/HOUSTON (IAH)

RADAR required for procedure entry. RNP APCH.		MALSR 	MISSED APPROACH: Climb to 2000 direct JINIP and left turn on track 079° to COSBI and hold.
<p>⚠ For uncompensated Baro-VNAV systems, LNAV/VNAV NA below -3°C or above 54°C. For inop ALS, increase LPV Cat E visibility to RVR 4000, LNAV/VNAV all Cats visibility to RVR 5500, and LNAV Cat C/D/E visibility to 1 3/8 SM.</p>			

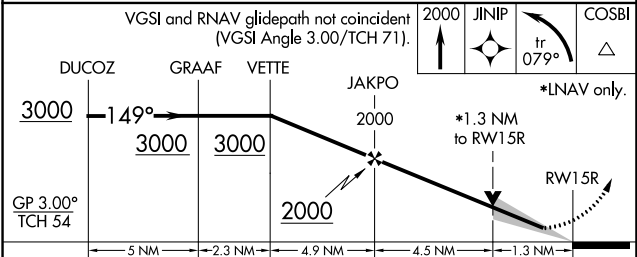
D-ATIS 124.05	HOUSTON APP CON 120.05 379.1 EAST 124.35 316.15 WEST	HOUSTON TOWER 127.3 288.25	GND CON 121.7	CLNC DEL 128.1	CPDLC
-------------------------	--	--------------------------------------	-------------------------	--------------------------	-------



ELEV 96	D	TDZE 95
---------	----------	---------



TDZ/CL Rwy 8R, 15R, 26R, 26L, 27 and 33L
HIRL all Rwy



CATEGORY	A	B	C	D	E
LPV DA		295/18	200 (200-1/2)		
LNAV/VNAV DA		460/35	365 (400-3/4)		
LNAV MDA	580/24	485 (500-1/2)		580/50	485 (500-1)

WAAS CH 57902 W33A	APP CRS 329°	Rwy 33R Rwy ldg 12001 TDZE 89 Apt Elev 96	Rwy 33L Rwy ldg 10000 TDZE 90 Apt Elev 96
--	------------------------	---	---

RNAV (GPS) RWY 33R

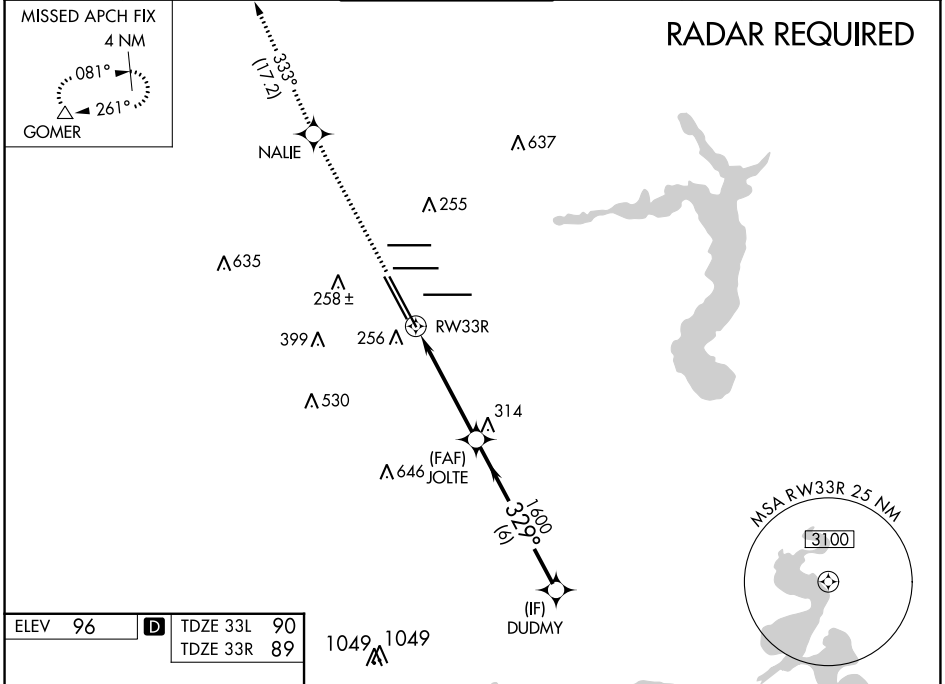
GEORGE BUSH INTCNL/HOUSTON (IAH)

▼ For uncompensated Baro-VNAV systems, LNAV/VNAV NA below -3°C (27°F) or above 54°C (130°F). For inop MALSR, increase LPV Cat E visibility to RVR 4000, LNAV/VNAV Cat E visibility to 1½, and LNAV Cat E visibility to 1½. DME/DME RNP-0.3 NA. **RVR 1800 authorized with use of FD or AP or HUD to DA.



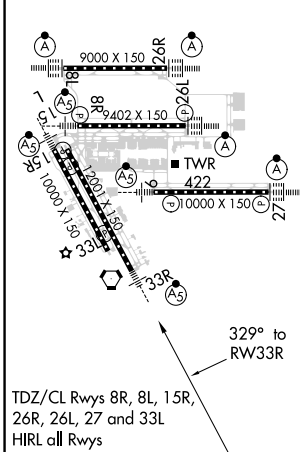
MISSED APPROACH: Climb to 2000 direct NALIE and on track 333° to GOMER and hold.

D-ATIS 124.05	HOUSTON APP CON 120.05 379.1 EAST 124.35 316.15 WEST	HOUSTON TOWER 127.3 288.25	GND CON 121.7	CLNC DEL 128.1	CPDLC
-------------------------	--	--------------------------------------	-------------------------	--------------------------	-------

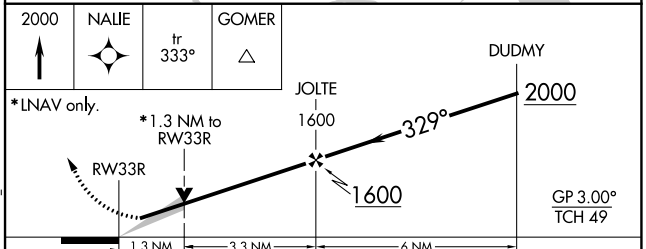


RADAR REQUIRED

ELEV 96	D TDZE 33L 90
	TDZE 33R 89



TDZ/CL Rwy 8r, 8L, 15R, 26R, 26L, 27 and 33L
HIRL all Rwy



CATEGORY	A	B	C	D	E
LPV DA**	289/24		200 (200-½)		
LNAV/VNAV DA	490/45		401 (400-¾)		
LNAV MDA	540/24	451 (500-½)	540/45		451 (500-¾)
SIDESTEP 33L	540-1	450 (500-1)	540-1½ 450 (500-1½)	540-2 450 (500-2)	NA

SC-5, 22 FEB 2024 to 21 MAR 2024

SC-5, 22 FEB 2024 to 21 MAR 2024

APP CRS	Rwy Idg	9402
267°	TDZE	95
	Apt Elev	96

RNAV (RNP) Y RWY 26L

GEORGE BUSH INTCNL/HOUSTON (IAH)

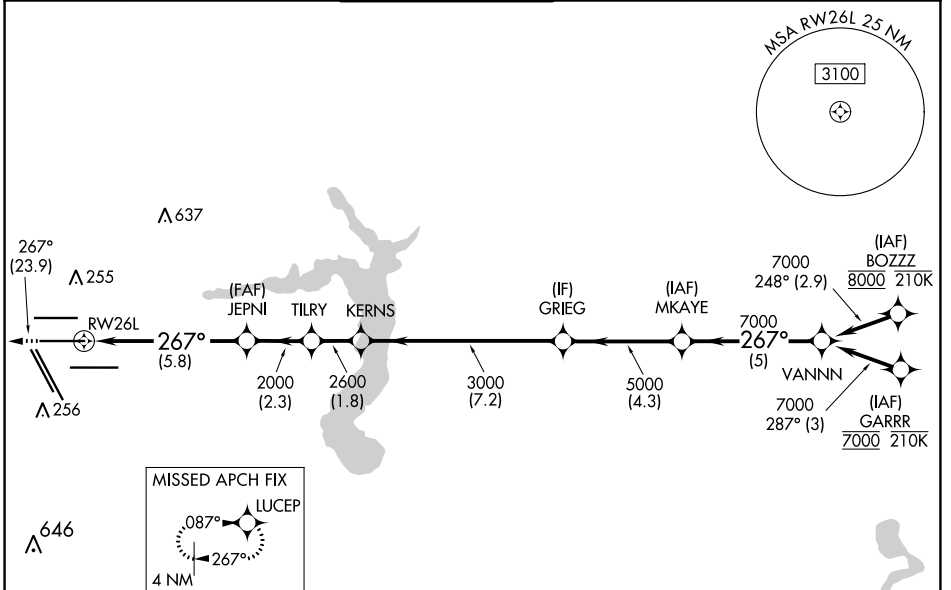
RNP AR APCH - GPS.

▼ For uncompensated Baro-VNAV systems, procedure NA below -3°C or above 54°C. Simultaneous approach authorized. For inop ALS, increase RNP 0.13 all Cats visibility to RVR 5100, and RNP 0.30 all Cats visibility to 1½ SM.

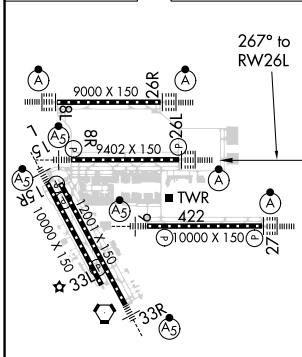
ALSF-2

MISSED APPROACH: Climb to 3000 on track 267° to LUCEP and hold.

D-ATIS	HOUSTON APP CON	HOUSTON TOWER	GND CON	CLNC DEL	CPDLC
124.05	120.05 379.1 EAST 124.35 316.15 WEST	125.35 290.2	118.575	128.1	

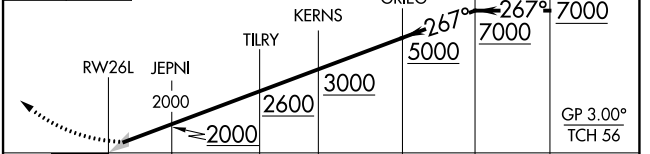


ELEV	96	D	TDZE	95
------	-----------	----------	------	-----------



3000 LUCEP VGSi and RNAV glidepath not coincident (VGSi Angle 3.00°/TCH 71°).

fr 267°



CATEGORY	A	B	C	D
RNP 0.13 DA		414/40	319 (400-¾)	
RNP 0.30 DA		549/55	454 (500-1)	

TDZ/CL Rwy 8, 8L, 15R, 26R, 26L, 27 and 33L
HIRL all Rwy

AUTHORIZATION REQUIRED

SC-5, 22 FEB 2024 to 21 MAR 2024


SC-5, 22 FEB 2024 to 21 MAR 2024

APP CRS	Rwy Idg	9000
267°	TDZE	96
	Apt Elev	96

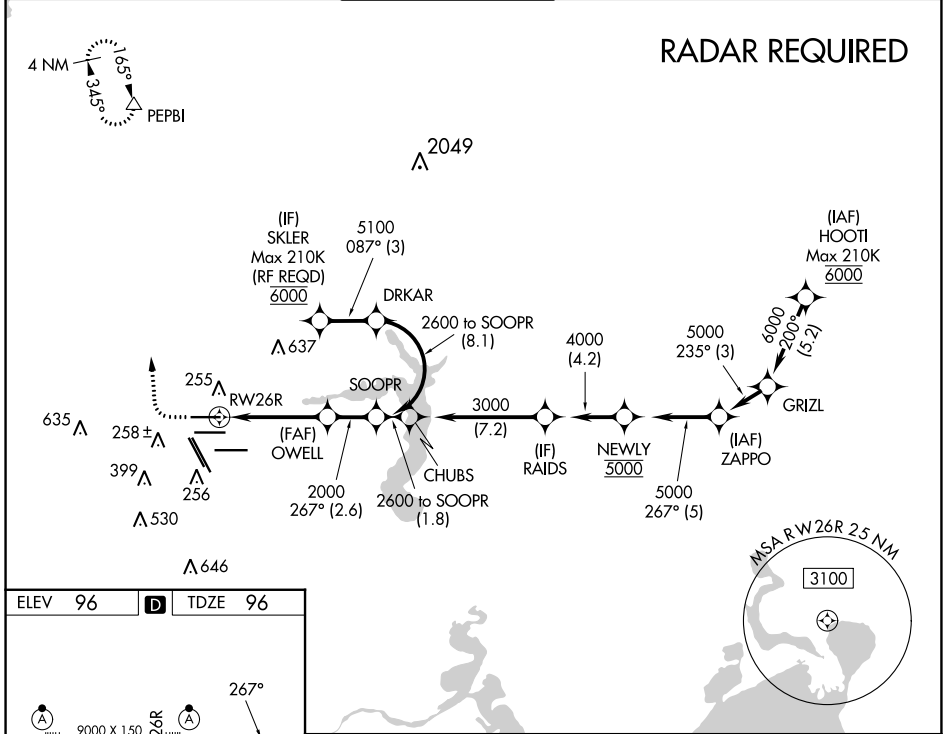
RNAV (RNP) Y RWY 26R

GEORGE BUSH INTCNL/HOUSTON (IAH)

▼ For uncompensated Baro-VNAV systems, procedure NA below -3°C (27°F) or above 54°C (130°F). GPS required. Simultaneous approach authorized. For inop ALS, increase RNP 0.11 all Cats visibility to RVR 5000 and increase RNP 0.15 all Cats visibility to 1½ SM. Use of FD or AP providing RNAV track guidance required during simultaneous operations.

ALSF-2
 MISSED APPROACH: Climb to 600 then climbing right turn to 3000 direct PEPBI and hold.

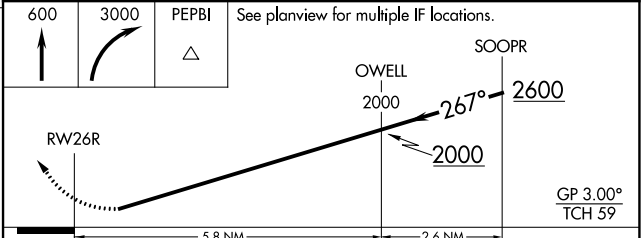
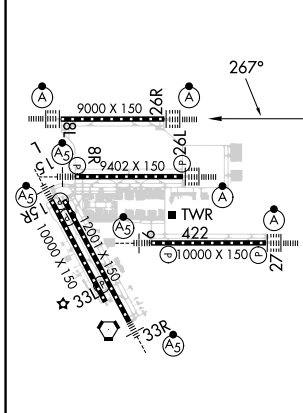
D-ATIS 124.05	HOUSTON APP CON 120.05 379.1 EAST 124.35 316.15 WEST	HOUSTON TOWER 120.72 290.2	GND CON 121.7	CLNC DEL 128.1	CPDLC
-------------------------	--	--------------------------------------	-------------------------	--------------------------	-------



SC-5, 22 FEB 2024 to 21 MAR 2024

SC-5, 22 FEB 2024 to 21 MAR 2024

ELEV 96	D	TDZE 96
---------	----------	---------



CATEGORY	A	B	C	D
RNP 0.11 DA		429/40	333 (400-¾)	
RNP 0.15 DA		496/45	400 (400-¾)	
RNP 0.30 DA		554/50	458 (500-1½)	

TDZ/CL Rwy 8R, 8L, 15R, 26R, 26L, 27 and 33L
 HIRL all Rwy

AUTHORIZATION REQUIRED

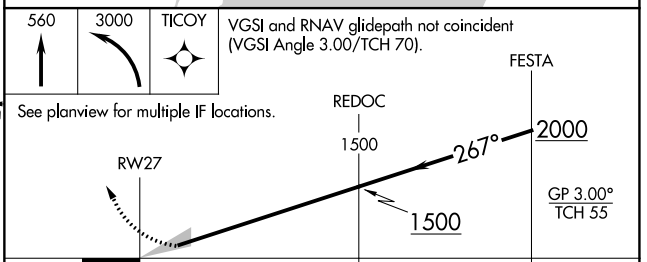
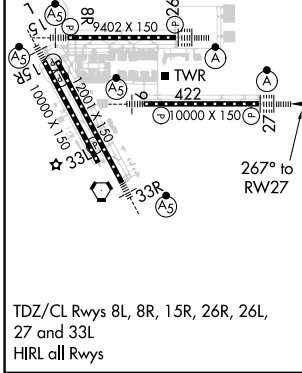
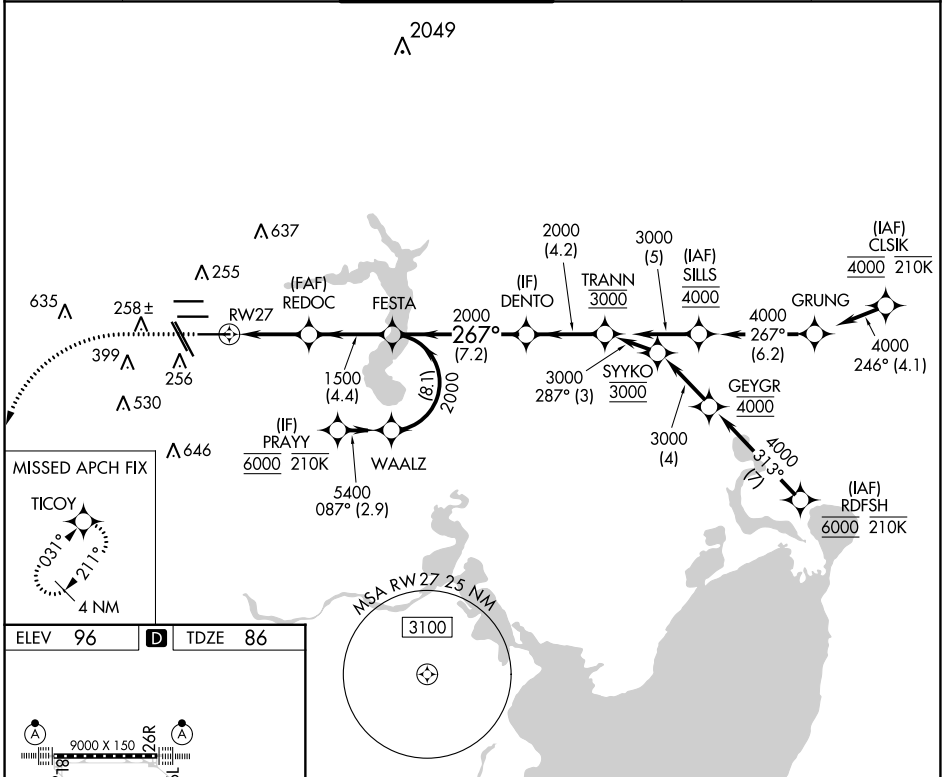
APP CRS	Rwy Idg	10000
267°	TDZE	86
	Apt Elev	96

RNAV (RNP) Y RWY 27

GEORGE BUSH INTCNTL/HOUSTON (IAH)

RNP AR APCH - GPS.		ALSF-2	MISSED APPROACH: Climb to 560 then climbing left turn to 3000 direct TICOY and hold.		
Simultaneous approach authorized. Use of FD or AP required during simultaneous operations. For uncompensated Baro-VNAV systems, procedure NA below -2°C or above 54°C. For inop ALS, increase RNP 0.30 all Cats visibility to RVR 4500.					

D-ATIS	HOUSTON APP CON	HOUSTON TOWER	GND CON	CLNC DEL	CPDLC
124.05	120.05 379.1 EAST 124.35 316.15 WEST	135.15 290.2	118.575	128.1	



CATEGORY	A	B	C	D
RNP 0.30 DA	380/24		294 (300-1/2)	

SC-5, 22 FEB 2024 to 21 MAR 2024

SC-5, 22 FEB 2024 to 21 MAR 2024

AUTHORIZATION REQUIRED

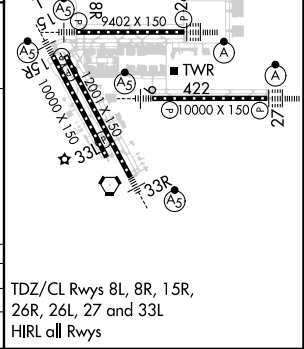
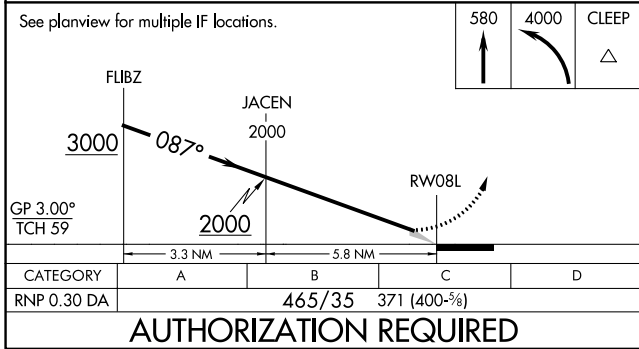
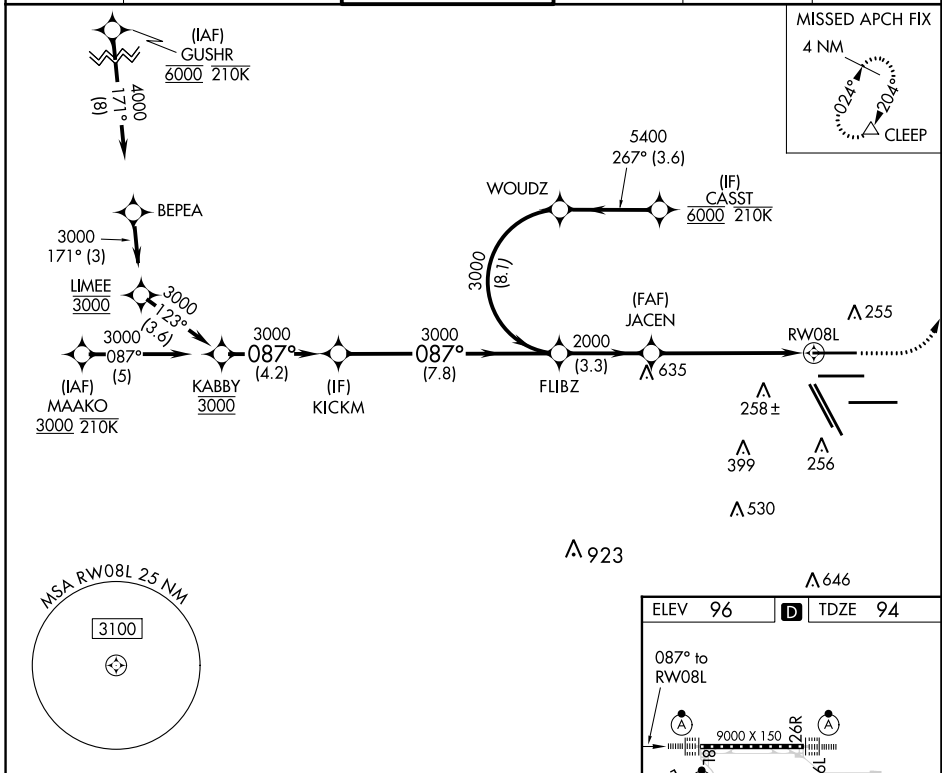
APP CRS	Rwy Idg	9000
087°	TDZE	94
	Apt Elev	96

RNAV (RNP) Y RWY 8L

GEORGE BUSH INTCNL/HOUSTON (IAH)

RNP AR APCH-GPS.		ALSF-2	MISSED APPROACH: Climb to 580 then climbing left turn to 4000 direct CLEEP and hold.
<p>Simultaneous approach authorized. For uncompensated Baro-VNAV systems, procedure NA below -2°C or above 54°C. Use of FD or AP providing RNAV track guidance required during simultaneous operations. For inop ALS, increase RNP 0.30 all Cats visibility to RVR 5500.</p>			

D-ATIS	HOUSTON APP CON	HOUSTON TOWER	GND CON	CLNC DEL	CPDLC
124.05	120.05 379.1 EAST 124.35 316.15 WEST	120.72 290.2	121.7	128.1	



SC-5, 22 FEB 2024 to 21 MAR 2024

SC-5, 22 FEB 2024 to 21 MAR 2024

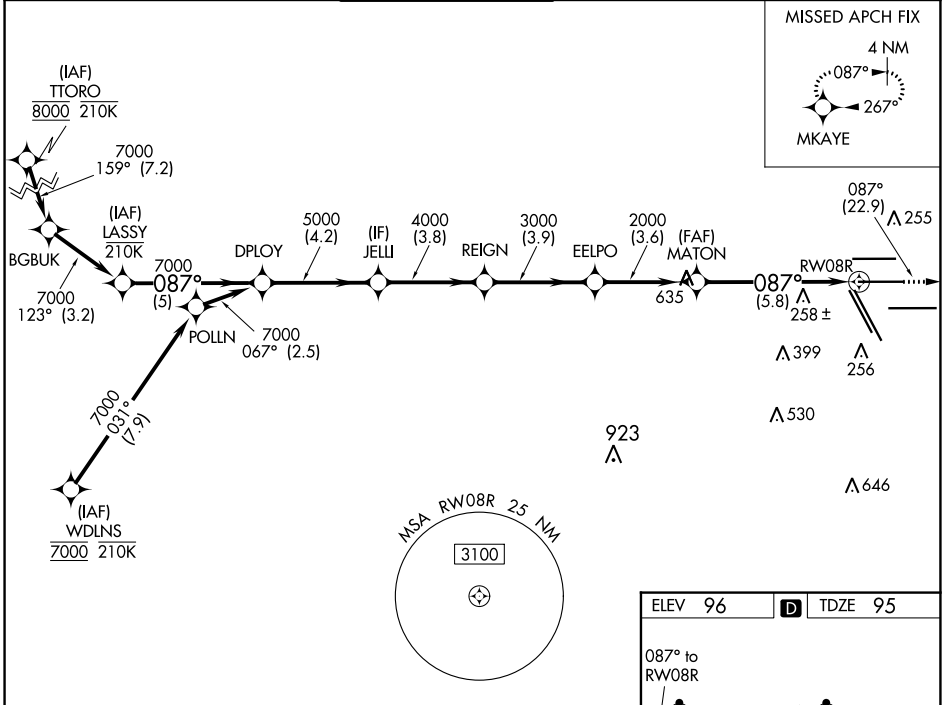
APP CRS	Rwy Idg	9402
087°	TDZE	95
	Apt Elev	96

RNAV (RNP) Y RWY 8R

GEORGE BUSH INTCNL/HOUSTON (IAH)

RNP AR APCH.		MALSR	MISSED APPROACH: Climb to 3000 on track 087° to MKAYE and hold.	
<p>For uncompensated Baro-VNAV systems, procedure NA below -3°C or above 54°C. For inop ALS increase RNP 0.13 all Cats visibility to RVR 4500, RNP 0.14 all Cats visibility to RVR 5600, RNP 0.30 all Cats visibility to 1¼ SM. Simultaneous approach authorized.</p>				

D-ATIS	HOUSTON APP CON	HOUSTON TOWER	GND CON	CLNC DEL	CPDLC
124.05	120.05 379.1 EAST 124.35 316.15 WEST	125.35 290.2	118.575	128.1	

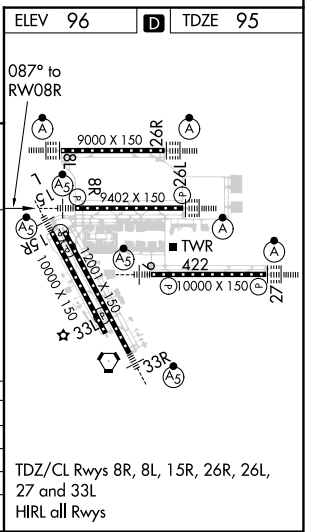


SC-5, 22 FEB 2024 to 21 MAR 2024

SC-5, 22 FEB 2024 to 21 MAR 2024

VGSI and RNAV glidepath not coincident (VGSI Angle 3.00/TCH 72).

LASSY	DPLOY	JELLI	REIGN	EELPO	MATON	RW08R
7000	7000	5000	4000	3000	2000	
GP 3.00° TCH 55						
-5 NM		4.2 NM	3.8	3.9	3.6	5.8 NM
CATEGORY	A	B	C	D		
RNP 0.13 DA		383/40	288 (300-¾)			
RNP 0.14 DA		441/40	346 (400-¾)			
RNP 0.30 DA		492/45	397 (400-¾)			




TDZ/CL Rwy 8R, 8L, 15R, 26R, 26L, 27 and 33L
HIRL all Rwy's

APP CRS	Rwy Idg	10000
087°	TDZE	91
	Apt Elev	96

RNAV (RNP) Y RWY 9

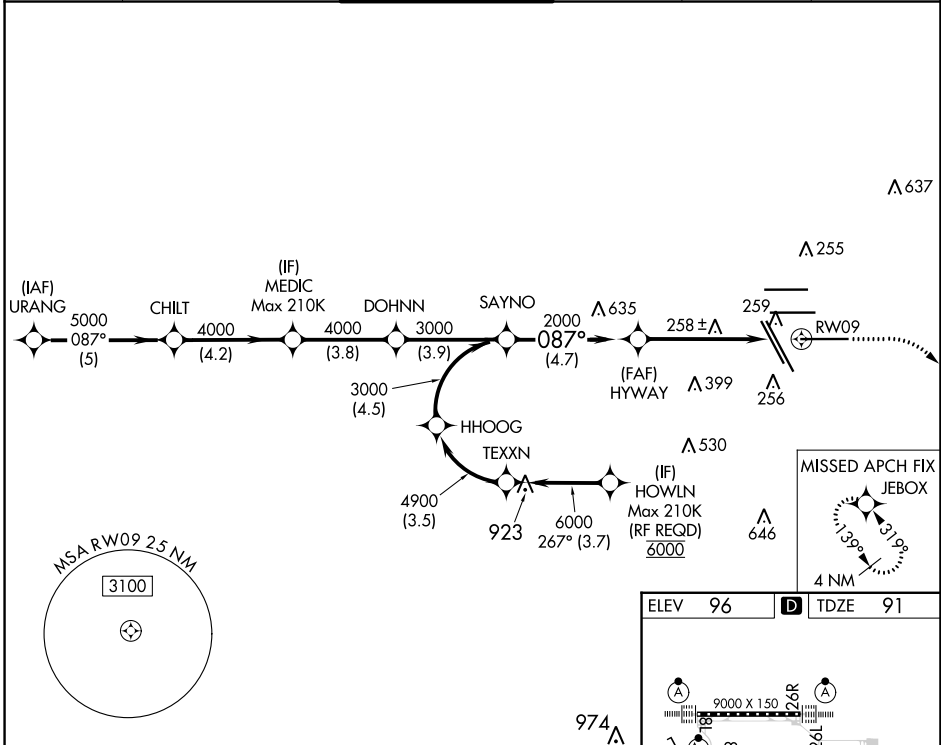
GEORGE BUSH INTCNL/HOUSTON (IAH)

▽ For uncompensated Baro-VNAV systems, procedure NA below -3°C (27°F) or above 54°C (130°F). GPS required. For inop MALSRL, increase all Cats visibility to 1 $\frac{3}{8}$ mile. Simultaneous approach authorized. Use of FD or AP providing RNAV track guidance required during simultaneous operations.

MALSRL 

MISSED APPROACH: Climb to 580 then climbing right turn to 3000 direct JEBOX and hold.

D-ATIS 124.05	HOUSTON APP CON 120.05 379.1 EAST 124.35 316.15 WEST	HOUSTON TOWER 135.15 290.2	GND CON 118.575	CLNC DEL 128.1	CPDLC
-------------------------	--	--------------------------------------	---------------------------	--------------------------	-------



SC-5, 22 FEB 2024 to 21 MAR 2024

SC-5, 22 FEB 2024 to 21 MAR 2024

VGS1 and RNAV glidepath not coincident (VGS1 Angle 3.00/TCH 71).		580	3000	JEBOX
CATEGORY	A	B	C	D
RNP 0.30 DA	51.6 / 49 425 (500-1)			

ELEV 96 **D** TDZE 91

TDZ/CL Rwwys 8R, 8L, 15R, 26R, 26L, 27 and 33L
HIRL all Rwwys

AUTHORIZATION REQUIRED

WAAS CH 49226 W26D	APP CRS 267°	Rwy Idg 9402 TDZE 95 Apt Elev 96
--	------------------------	---

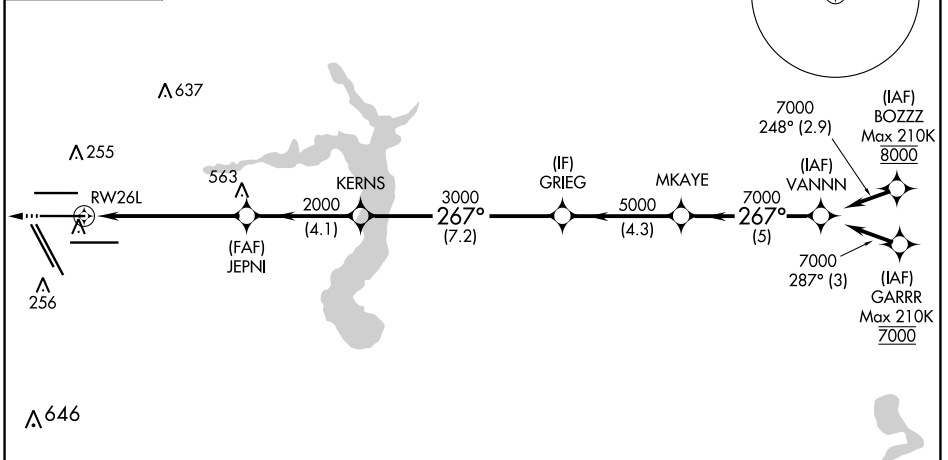
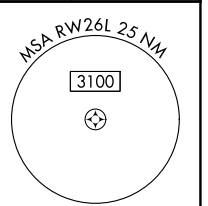
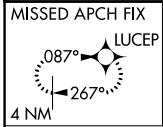
RNAV (GPS) Z RWY 26L

GEORGE BUSH INTCNL/HOUSTON (IAH)

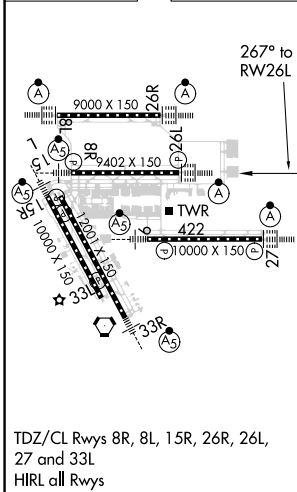
▼ For uncompensated Baro-VNAV systems, LNAV/VNAV NA below -3°C (27°F) or above 54°C (130°F). For inop ALSF, increase LPV Cat E visibility to RVR 4000, LNAV/VNAV Cat E visibility to 1½, and LNAV Cat E visibility to 1¾. DME/DME RNP-0.3 NA. Simultaneous approach authorized with Rwy 26R and Rwy 27. LNAV procedure NA during simultaneous operations. Use of FD or AP providing RNAV track guidance required during simultaneous operations.

ALSF-2
MISSED APPROACH:
Climb to 3000 direct
LUCEP and hold.

D-ATIS 124.05	HOUSTON APP CON 120.05 379.1 EAST 124.35 316.15 WEST	HOUSTON TOWER 125.35 290.2	GND CON 118.575	CLNC DEL 128.1	CPDLC
-------------------------	--	--------------------------------------	---------------------------	--------------------------	-------



ELEV 96	D	TDZE 95
---------	----------	---------



RADAR REQUIRED

3000 LUCEP VGSi and RNAV glidepath not coincident (VGSi Angle 3.00°/TCH 71).

*LNAV only

	1.6 NM	4.2 NM	4.1 NM	7.2 NM	4.3 NM	5 NM
CATEGORY	A	B	C	D	E	
LPV DA		295/18	200 (200-½)			
LNAV/VNAV DA		586/60	491 (500-1¼)			
LNAV MDA	680/24	585 (600-½)	680-1¼	585 (600-1¼)		

SC-5, 22 FEB 2024 to 21 MAR 2024

SC-5, 22 FEB 2024 to 21 MAR 2024

WAAS CH 97726 W26A	APP CRS 267°	Rwy Idg TDZE Apt Elev	9000 96 96
--	------------------------	-----------------------------	---------------------------------------

RNAV (GPS) Z RWY 26R

GEORGE BUSH INTCNTL/HOUSTON (IAH)

▼ For uncompensated Baro-VNAV systems, LNAV/VNAV NA below -3°C (27°F) or above 54°C (130°F). For inop ALSF, increase LPV Cat E visibility to RVR 4000, LNAV/VNAV all Cats visibility to 1¼, and LNAV Cat C/D/E visibility to 1¾. DME/DME RNP-0.3 NA. Simultaneous approach authorized with Rwy 26L and Rwy 27. LNAV procedure NA during simultaneous operations. Use of FD or AP providing RNAV track guidance required during simultaneous operations.



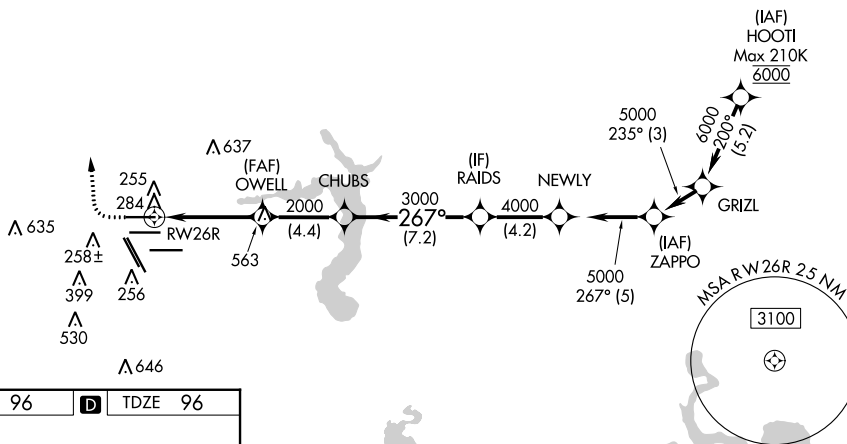
MISSED APPROACH: Climb to 600 then climbing right turn to 3000 direct PEPBI and hold.

D-ATIS 124.05	HOUSTON APP CON 120.05 379.1 EAST 124.35 316.15 WEST	HOUSTON TOWER 120.72 290.2	GND CON 121.7	CLNC DEL 128.1	CPDLC
-------------------------	--	--------------------------------------	-------------------------	--------------------------	-------

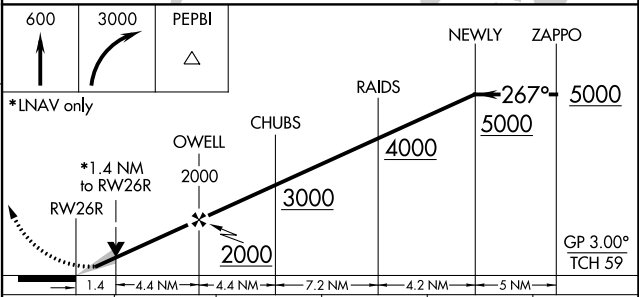
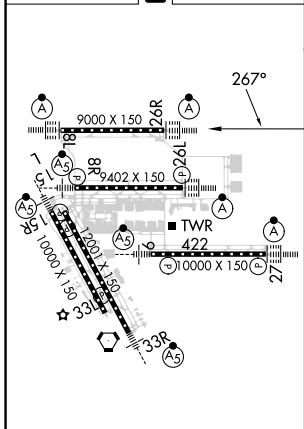
RADAR REQUIRED



△ 2049



ELEV 96	D	TDZE 96
---------	----------	---------



CATEGORY	A	B	C	D	E
LPV DA		296/18	200 (200-½)		
LNAV/VNAV DA		496/42	400 (400-¾)		
LNAV MDA	600/24	504 (600-½)		600/55	504 (600-1)

TDZ/CL Rws 8R, 8L, 15R, 26R, 26L, 27 and 33L
HIRL all Rws

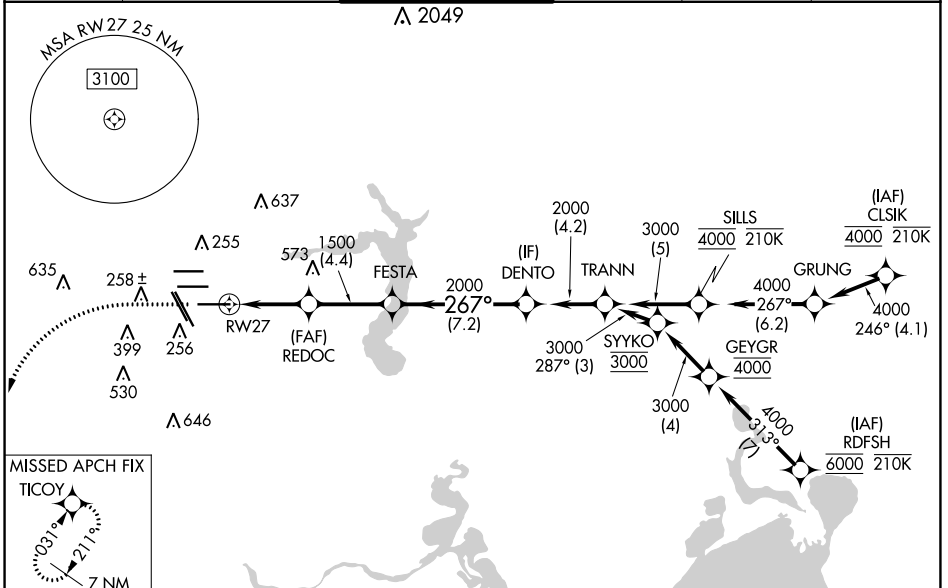
WAAS CH 69626 W27A	APP CRS 267°	Rwy Idg 10000 TDZE 86 Apt Elev 96
--	------------------------	--

RNAV (GPS) Z RWY 27

GEORGE BUSH INTCNL/HOUSTON (IAH)

RNP APCH.	<p>Simultaneous approach authorized. LNAV procedure NA during simultaneous operations. Use of FD or AP required during simultaneous operations. For uncompensated Baro-VNAV systems, LNAV/VNAV NA below -2°C or above 54°C. For inop ALS, increase LPV Cat E visibility to RVR 4000, LNAV/VNAV Cat E visibility to RVR 6000, and LNAV Cats C, D and E visibility to 1$\frac{3}{8}$ SM.</p>	<p>ALSF-2</p>	<p>MISSED APPROACH: Climb to 560 then climbing left turn to 3100 direct TICOY and hold.</p>
-----------	---	---------------	---

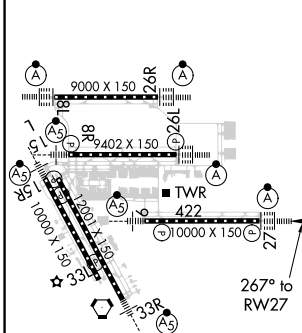
D-ATIS 124.05	HOUSTON APP CON 120.05 379.1 EAST 124.35 316.15 WEST	HOUSTON TOWER 135.15 290.2	GND CON 118.575	CLNC DEL 128.1	CPDLC
-------------------------	--	--------------------------------------	---------------------------	--------------------------	-------



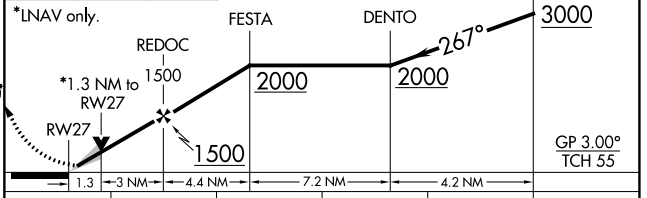
SC-5, 22 FEB 2024 to 21 MAR 2024

SC-5, 22 FEB 2024 to 21 MAR 2024

ELEV 96	D	TDZE 86
---------	----------	---------



560	3100	TICOY	VGSI and RNAV glidepath not coincident (VGSI Angle 3.00/TCH 70).
-----	------	-------	--



CATEGORY	A	B	C	D	E
LPV DA	286/18		200 (200- $\frac{1}{2}$)		
LNAV/VNAV DA	476/35		390 (400- $\frac{5}{8}$)		
LNAV MDA	560/24	474 (500- $\frac{1}{2}$)	560/50		474 (500-1)

TDZ/CL Rwy 8R, 8L, 15R, 26R, 26L, 27 and 33L
HIRL all Rwy

WAAS CH 77826 W08A	APP CRS 087°	Rwy Idg TDZE Apt Elev	9000 95 96
--	------------------------	-----------------------------	---------------------------------------

RNAV (GPS) Z RWY 8L

GEORGE BUSH INTCNL/HOUSTON (IAH)

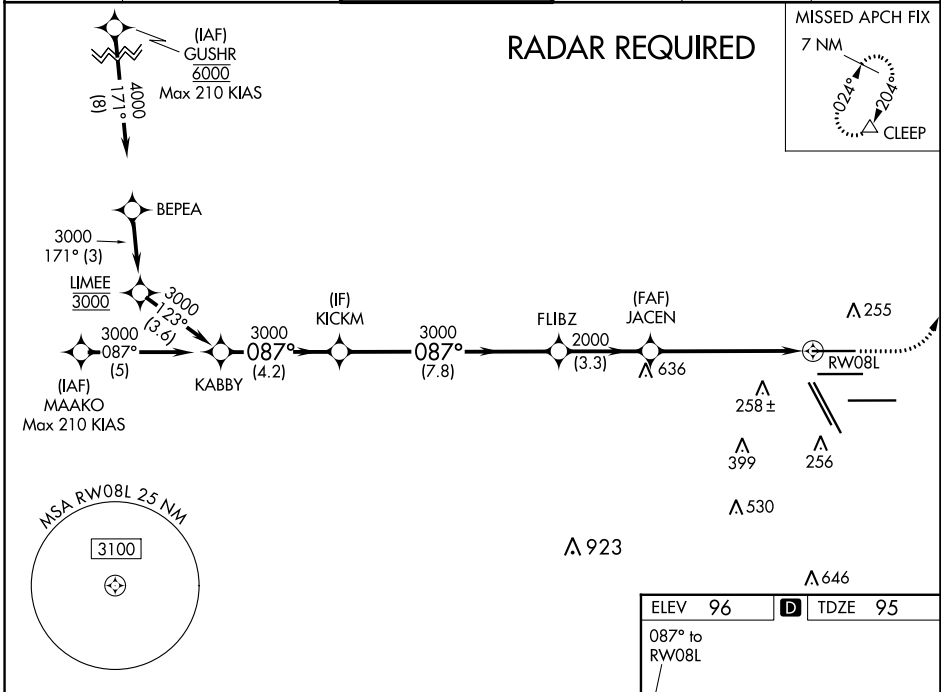
▼ For uncompensated Baro-VNAV systems, LNAV/VNAV NA below -3°C (27°F) or above 54°C (130°F). For inop ALSF, increase LPV Cat E visibility to RVR 4000, LNAV/VNAV Cat E visibility to 1¼, and LNAV Cat C/D/E visibility to 1¾. Simultaneous approach authorized with Rwy 8R and Rwy 9. DME/DME RNP-0.3 NA. Use of FD or AP providing RNAV track guidance required during simultaneous operations. LNAV procedure NA during simultaneous operations.

ALSF-2



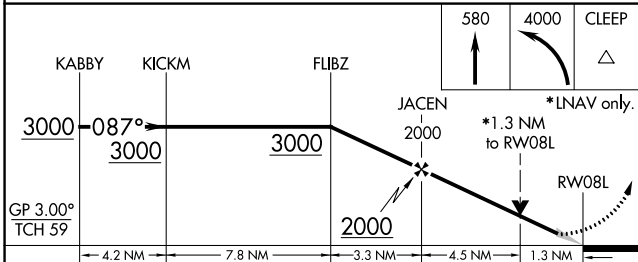
MISSED APPROACH: Climb to 580 then climbing left turn to 4000 direct CLEEP and hold.

D-ATIS 124.05	HOUSTON APP CON 120.05 379.1 EAST 124.35 316.15 WEST	HOUSTON TOWER 120.72 290.2	GND CON 121.7	CLNC DEL 128.1	CPDLC
-------------------------	--	--------------------------------------	-------------------------	--------------------------	-------

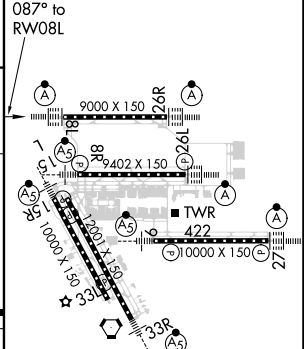


SC-5, 22 FEB 2024 to 21 MAR 2024

SC-5, 22 FEB 2024 to 21 MAR 2024



ELEV 96	D	TDZE 95
---------	----------	---------



CATEGORY	A	B	C	D	E
LPV DA	295/18		200 (200-½)		
LNAV/VNAV DA	486/40		391 (400-¾)		
LNAV MDA	580/24	485 (500-½)	580/50	485 (500-1)	

TDZ/CL Rwws 8R, 8L, 15R, 26R, 26L, 27 and 33L
HIRL all Rwws

WAAS CH 53626 W08B	APP CRS 087°	Rwy Idg TDZE 96 Apt Elev 96	9402
--	------------------------	---	-------------

RNAV (GPS) Z RWY 8R

GEORGE BUSH INTCNL/HOUSTON (IAH)

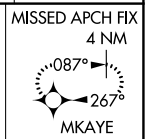
▼ For uncompensated Baro-VNAV systems, LNAV/VNAV NA below -3°C (27°F) or above 54°C (130°F). For inop MALS R, increase LPV Cat E visibility to RVR 4000, LNAV/VNAV all Cats visibility to RVR 6000, and LNAV Cat C/D/E visibility to 1 $\frac{1}{2}$ %. Simultaneous approach authorized with Rwy 8L and Rwy 9. DME/DME RNP-0.3 NA. Use of FD or AP providing RNAV track guidance required during simultaneous operations. LNAV procedure NA during simultaneous operations.



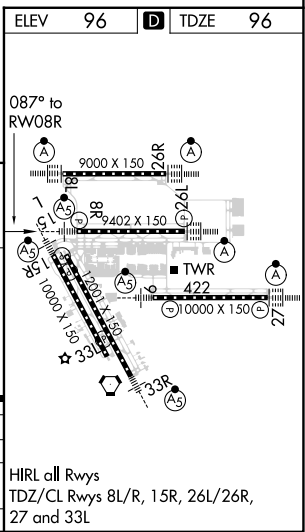
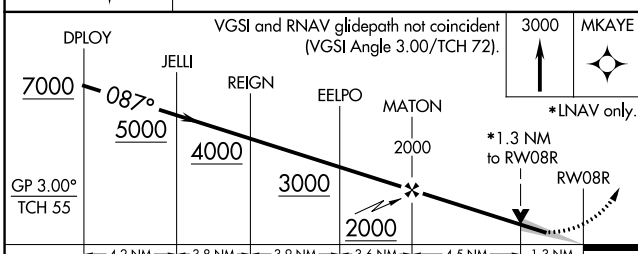
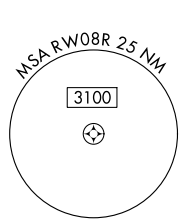
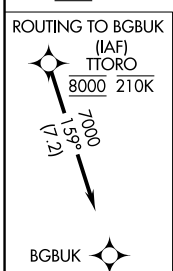
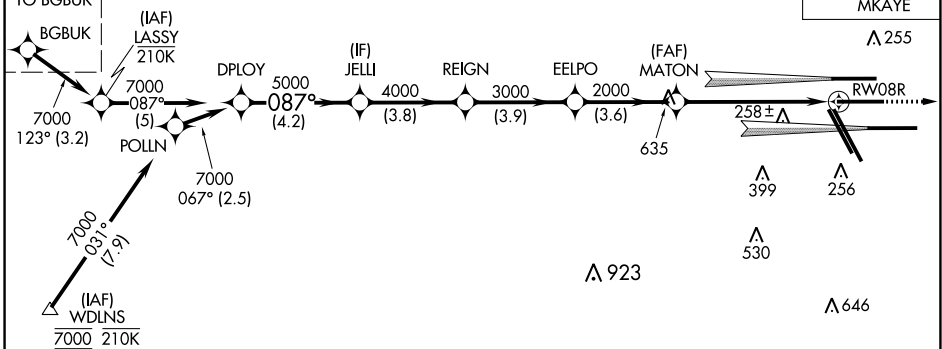
MISSED APPROACH:
Climb to 3000 direct MKAYE and hold.

D-ATIS 124.05	HOUSTON APP CON 120.05 379.1 EAST 124.35 316.15 WEST	HOUSTON TOWER 125.35 290.2	GND CON 118.575	CLNC DEL 128.1	CPDLC
-------------------------	--	--------------------------------------	---------------------------	--------------------------	-------

RADAR REQUIRED



SEE INSET FOR ROUTING TO BGBK



CATEGORY	A	B	C	D	E
LPV DA	296/18		200 (200- $\frac{1}{2}$)		
LNAV/VNAV DA	421/32		325 (400- $\frac{5}{8}$)		
LNAV MDA	580/24	484 (500- $\frac{1}{2}$)	580/50	484 (500-1)	

HIRL all Rwys
TDZ/CL Rwys 8L/R, 15R, 26L/26R, 27 and 33L

SC-5, 22 FEB 2024 to 21 MAR 2024

SC-5, 22 FEB 2024 to 21 MAR 2024

WAAS CH 72926 W09A	APP CRS 087°	Rwy Idg 10000 TDZE 91 Apt Elev 96
--	------------------------	--

RNAV (GPS) Z RWY 9

GEORGE BUSH INTCNL/HOUSTON (IAH)

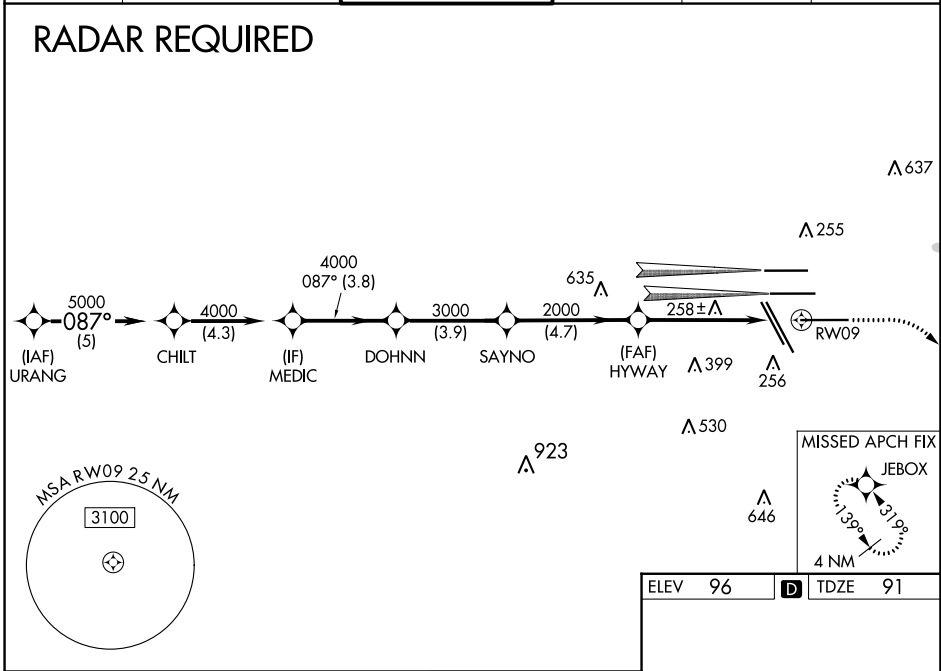
▼ For uncompensated Baro-VNAV systems, LNAV/VNAV NA below -3°C (27°F) or above 54°C (130°F). For inop MALSR, increase LPV Cat E visibility to RVR 4000, LNAV/VNAV Cat E visibility to 1½ mile, and LNAV Cat C/D/E visibility to 1¾ mile. Simultaneous approach authorized with Rwy 8L/R. DME/DME RNP-0.3 NA. LNAV procedure NA during simultaneous operations. Use of FD or AP providing RNAV track guidance required during simultaneous operations.
 ** RVR 1800 authorized with use of FD or AP or HUD to DA.

MALSR

MISSED APPROACH: Climb to 580 then climbing right turn to 3000 direct JEBOX and hold.

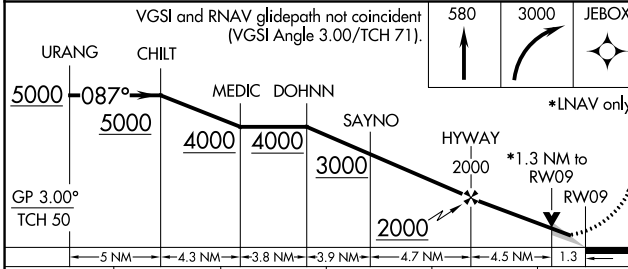
D-ATIS 124.05	HOUSTON APP CON 120.05 379.1 EAST 124.35 316.15 WEST	HOUSTON TOWER 135.15 290.2	GND CON 118.575	CLNC DEL 128.1	CPDLC
-------------------------	--	--------------------------------------	---------------------------	--------------------------	-------

RADAR REQUIRED



SC-5, 22 FEB 2024 to 21 MAR 2024

SC-5, 22 FEB 2024 to 21 MAR 2024



ELEV 96	D TDZE 91
---------	------------------

CATEGORY	A	B	C	D	E
LPV DA**	291/24		200 (200-½)		
LNAV/VNAV DA	525/50		434 (500-1)		
LNAV MDA	580/24	489 (500-½)	580/50	489 (500-1)	