

APP CRS **180°**
 Rwy Idg **7004**
 TDZE **126**
 Apt Elev **126**

RNAV (GPS) RWY 18
 INDIANOLA MUNI (IDL)

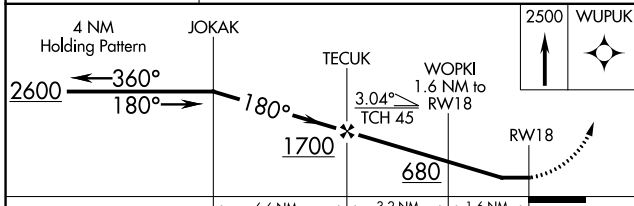
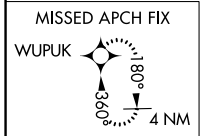
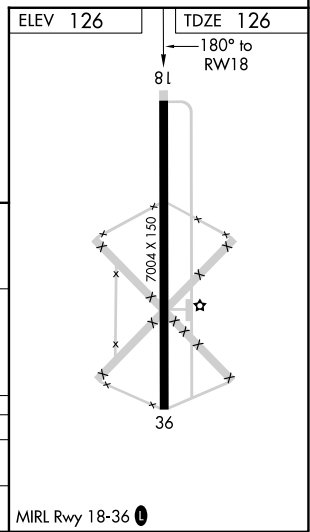
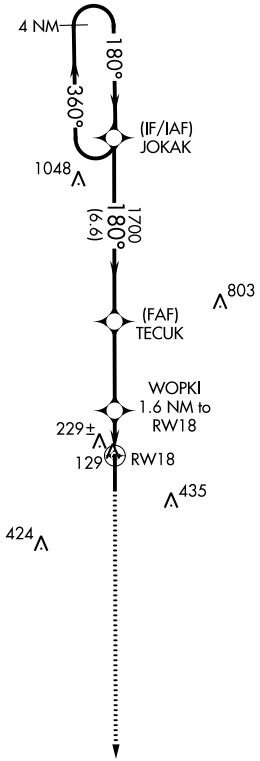
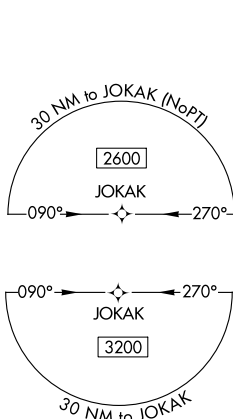
▽ **△NA** DME/DME RNP-0.3 NA. Rwy 18 helicopter visibility reduction below 1 SM NA. Straight-in/Circling to Rwy 18 NA at night. Use Greenville altimeter setting, when not received, use Greenwood altimeter setting and increase all MDA 40 feet, increase LNAV Cat C/D visibility 1/8 SM and Circling Cat C/D visibility 1/4 SM.

MISSED APPROACH: Climb to 2500 direct WUPUK and hold.

GLH ASOS **125.525**

MEMPHIS CENTER **135.875 269.35**

UNICOM **122.8 (CTAF) 0**



CATEGORY	A	B	C	D
LNAV MDA	520-1	394 (400-1)	520-1 1/8	394 (400-1 1/8)
CIRCLING	580-1 454 (500-1)	600-1 474 (500-1)	840-2 714 (800-2)	840-2 1/4 714 (800-2 1/4)

SC-4, 22 FEB 2024 to 21 MAR 2024

SC-4, 22 FEB 2024 to 21 MAR 2024

WAAS CH 69319 W36A	APP CRS 360°	Rwy Idg 7004 TDZE 120 Apt Elev 126
--	------------------------	---

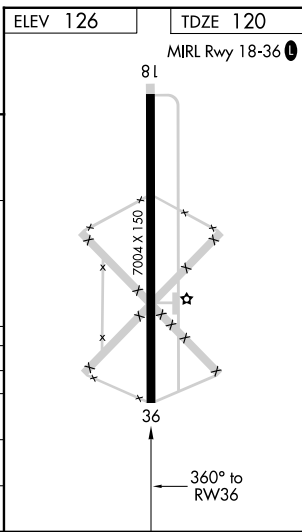
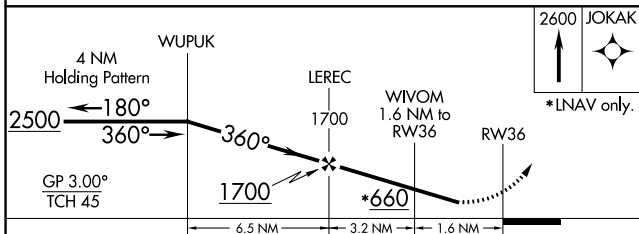
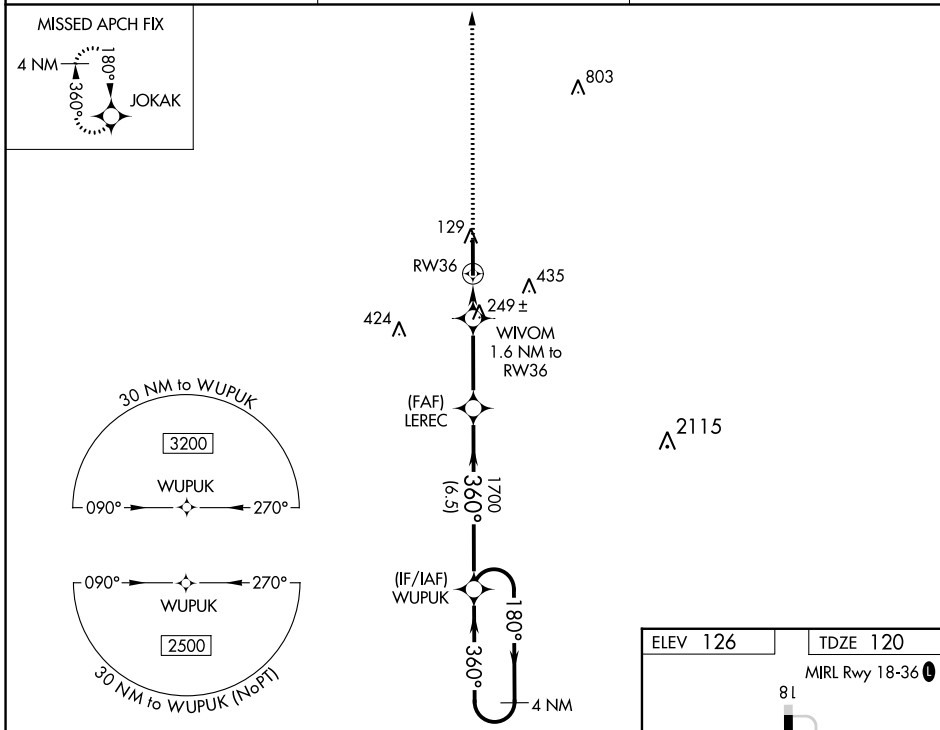
RNAV (GPS) RWY 36

INDIANOLA MUNI (IDL)

▼ **▲NA** Night landing: Rwy 18 NA. Baro-VNAV NA. DME/DME RNP-0.3 NA. Helicopter visibility reduction below 3/4 SM NA. Use Greenville altimeter setting, when not received, use Greenwood altimeter setting and increase LPV DA to 507 and all Cats visibility 1/8 SM, increase LNAV/VNAV DA to 465 and all Cats visibility 1/8 SM, increase all MDA 40 feet, increase LNAV Cat C/D and Circling Cat C/D visibility 1/4 SM.

MISSED APPROACH: Climb to 2600 direct JOKAK and hold.

GLH ASOS 125.525	MEMPHIS CENTER 135.875 269.35	UNICOM 122.8 (CTAF) 0
----------------------------	---	---------------------------------



CATEGORY	A	B	C	D
LPV DA	470-1 1/8		350 (400-1 1/8)	
LNAV/VNAV DA	428-1		308 (400-1)	
LNAV MDA	540-1 420 (500-1)		540-1 1/8 420 (500-1 1/8)	
CIRCLING	580-1 454 (500-1)	600-1 474 (500-1)	840-2 714 (800-2)	840-2 1/4 714 (800-2 1/4)

SC-4, 22 FEB 2024 to 21 MAR 2024

SC-4, 22 FEB 2024 to 21 MAR 2024

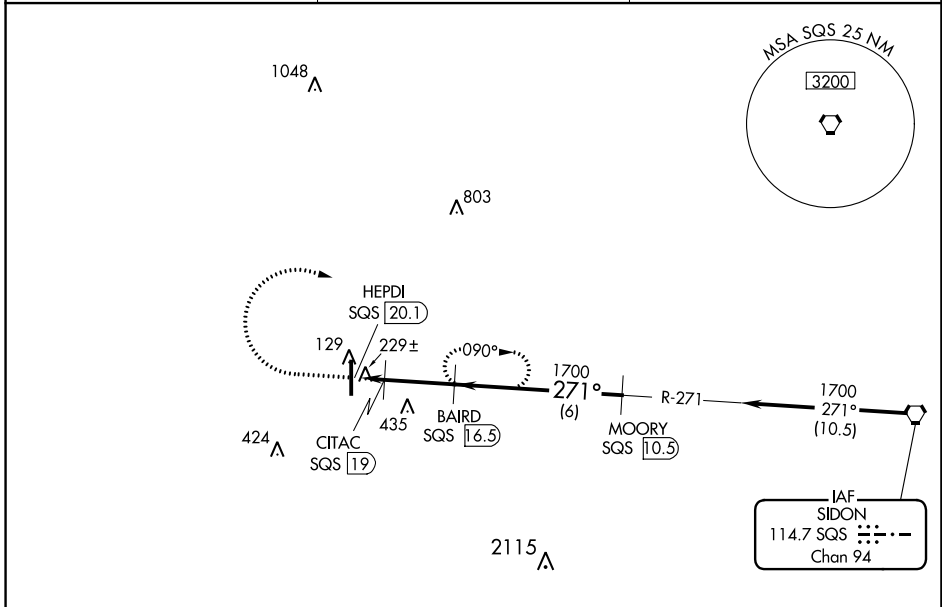
VORTAC SQS 114.7 Chan 94	APP CRS 271°	Rwy Idg TDZE Apt Elev	N/A N/A 126
--	------------------------	-----------------------------	--

VOR/DME-A
INDIANOLA MUNI (IDL)

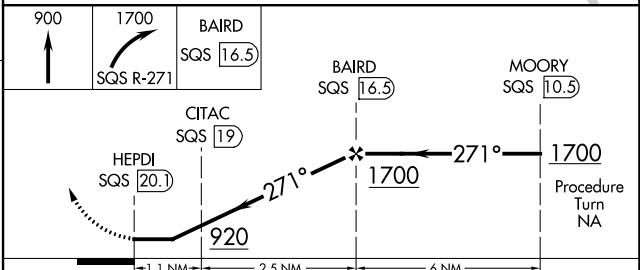
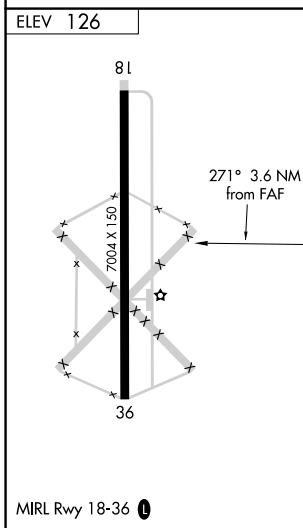
NA Use Greenville altimeter setting, when not received, use Greenwood altimeter setting and increase all MDA 40 feet and Circling Cat C/D visibility ¼ SM. Circling to Rwy 18 NA at night. Helicopter visibility reduction below 1 SM NA.

MISSED APPROACH: Climb to 900, then climbing right turn to 1700 on SQS VORTAC R-271 to BAIRD/16.50 DME and hold.

GLH ASOS 125.525	MEMPHIS CENTER 135.875 269.35	UNICOM 122.8 (CTAF) 0
----------------------------	---	---------------------------------



Procedure NA for arrivals at SQS VORTAC on airway radial 273.



CATEGORY	A	B	C	D
CIRCLING	580-1 454 (500-1)	600-1 474 (500-1)	840-2 714 (800-2)	840-2¼ 714 (800-2¼)

SC-4, 22 FEB 2024 to 21 MAR 2024

SC-4, 22 FEB 2024 to 21 MAR 2024

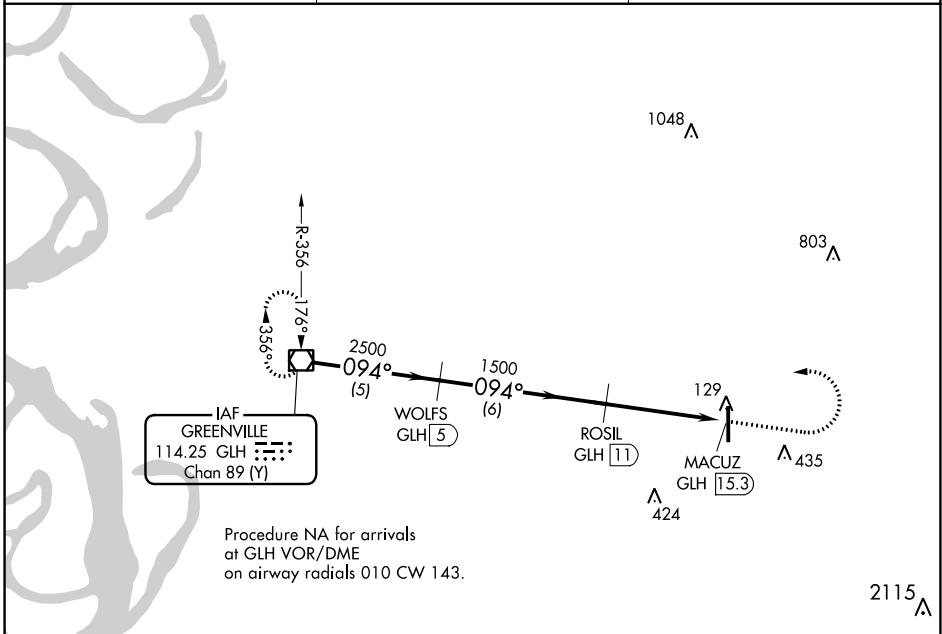
VOR/DME GLH 114.25 Chan 89 (Y)	APP CRS 094°	Rwy Idg TDZE Apt Elev N/A 126
--	------------------------	--

VOR/DME-B
INDIANOLA MUNI (IDL)

▲ NA Use Greenville altimeter setting, when not received, use Greenwood altimeter setting and increase all MDA 40 feet, Circling Cat C/D visibility ¼ SM. Circling to Rwy 18 NA at night. Helicopter visibility reduction below 1 SM NA.

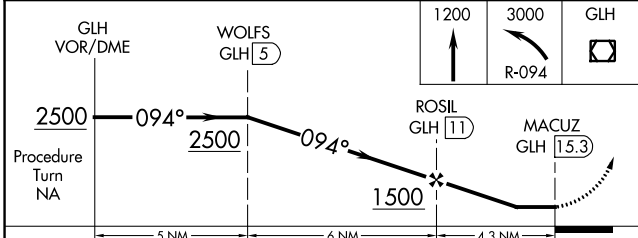
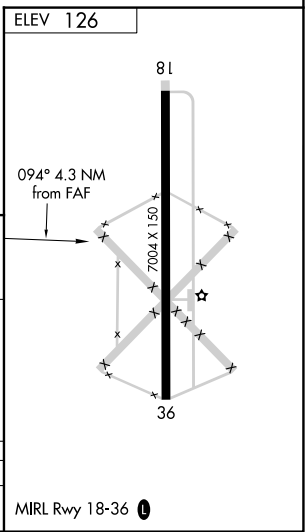
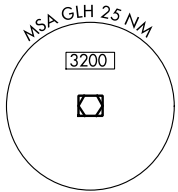
MISSED APPROACH: Climb to 1200 then climbing left turn to 3000 on R-094 to GLH VOR/DME and hold.

GLH ASOS 125.525	MEMPHIS CENTER 135.875 269.35	UNICOM 122.8 (CTAF) 0
----------------------------	---	--



SC-4, 22 FEB 2024 to 21 MAR 2024

SC-4, 22 FEB 2024 to 21 MAR 2024



CATEGORY	A	B	C	D
CIRCLING	580-1 454 (500-1)	600-1 474 (500-1)	840-2 714 (800-2)	840-2¼ 714 (800-2¼)