

WAAS CH 58207 W25A	APP CRS 252°	Rwy Idg TDZE Apt Elev	4872 659 684
--	------------------------	-----------------------------	---

RNAV (GPS) RWY 25

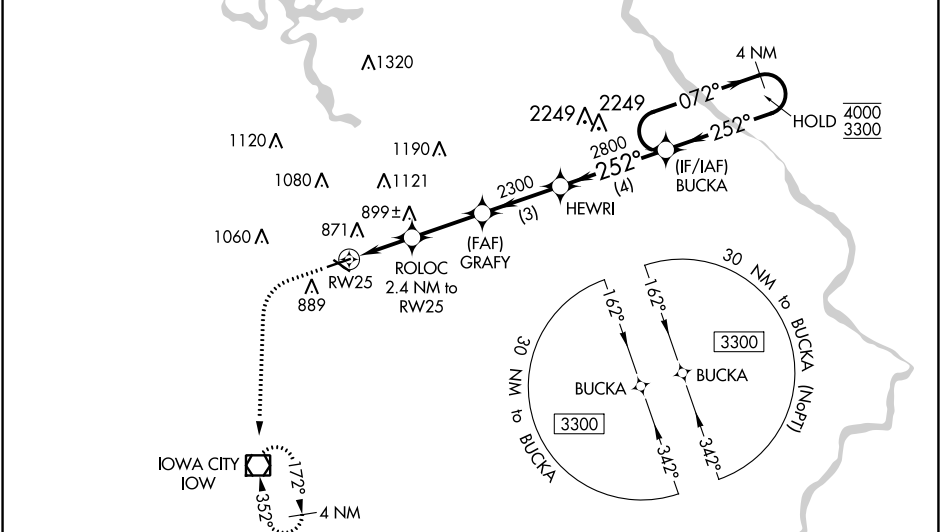
IOWA CITY MUNI (IOW)

RNP APCH - GPS.

⚠ Circling Rwy 12 NA at night. Baro-VNAV and VDP NA when using Cedar Rapids altimeter setting. Rwy 25 helicopter visibility reduction below $\frac{3}{4}$ SM NA. For uncompensated Baro-VNAV systems, LNAV/VNAV NA below -23°C or above 54°C. When local altimeter setting not received, use Cedar Rapids altimeter setting: increase LPV DA to 973 and all visibilities $\frac{1}{8}$ SM, increase LNAV/VNAV DA to 1214 feet and all visibilities $\frac{1}{4}$ SM; increase all MDAs 80 feet and visibility Cats C/D $\frac{1}{4}$ SM.

MISSED APPROACH: Climb to 1200 then climbing left turn to 2600 direct IOW VOR/DME and hold, continue climb-in-hold to 2600.

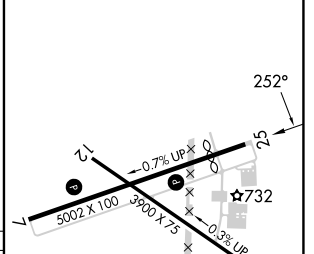
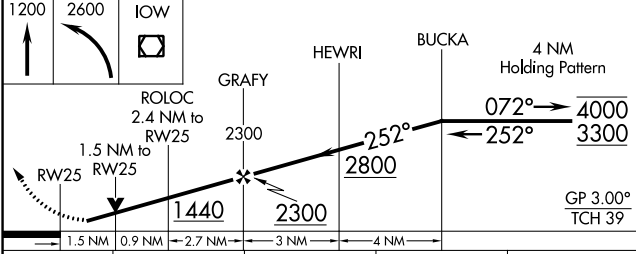
ASOS 128,075	CEDAR RAPIDS APP CON* 119.7 266.8	CLNC DEL 119.05	UNICOM 122.8 (CTAF) 1
------------------------	---	---------------------------	---------------------------------



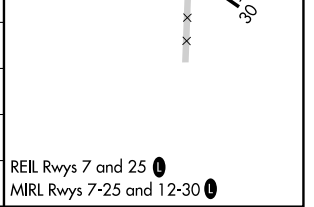
NC-3, 22 FEB 2024 to 21 MAR 2024

NC-3, 22 FEB 2024 to 21 MAR 2024

ELEV 684	D TDZE 659
----------	-------------------



CATEGORY	A	B	C	D
LPV DA		909- $\frac{3}{4}$	250 (300- $\frac{3}{4}$)	
LNAV/VNAV DA		1150-1 $\frac{3}{8}$	491 (500-1 $\frac{1}{8}$)	
LNAV MDA	1160-1	501 (500-1)	1160-1 $\frac{3}{8}$	501 (500-1 $\frac{1}{8}$)
C CIRCLING	1220-1 536 (600-1)	1240-1 556 (600-1)	1440-2 $\frac{1}{4}$ 756 (800-2 $\frac{1}{4}$)	1440-2 $\frac{1}{2}$ 756 (800-2 $\frac{1}{2}$)



REIL Rws 7 and 25 **1**
MIRL Rws 7-25 and 12-30 **1**

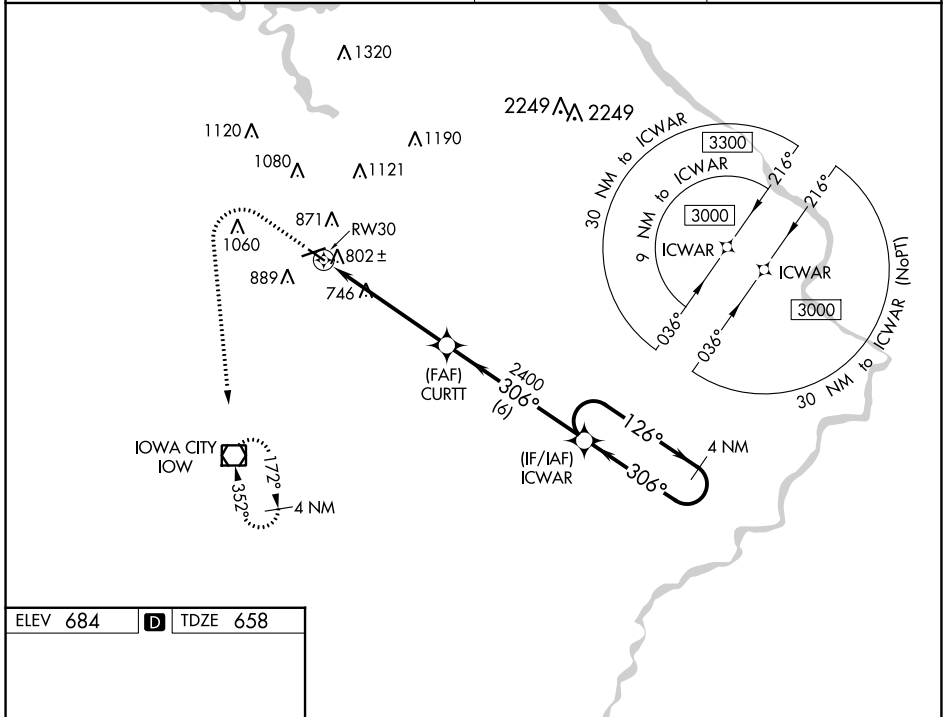
WAAS CH 86841 W30A	APP CRS 306°	Rwy Idg TDZE Apt Elev	3900 658 684
--	------------------------	-----------------------------	---

RNAV (GPS) RWY 30

IOWA CITY MUNI (IOW)

RNP APCH - GPS.		MISSED APPROACH: Climb to 1100 then climbing left turn to 3000 direct IOW VOR/DME and hold.
<p>⚠ Circling Rwy 12 NA at night. Rwy 30 helicopter visibility reduction below ¼ SM NA. When local altimeter setting not received, use Cedar Rapids altimeter setting and increase all MDA 80 feet, LP Cat C and D visibility ½ SM, LNAV and Circling Cat C and D visibility ¼ SM.</p>		

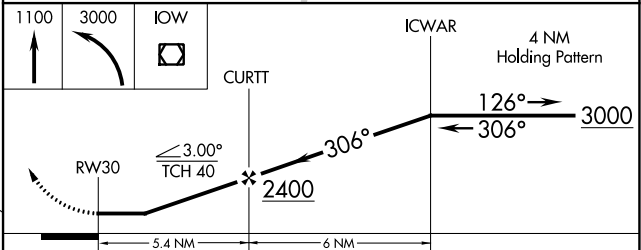
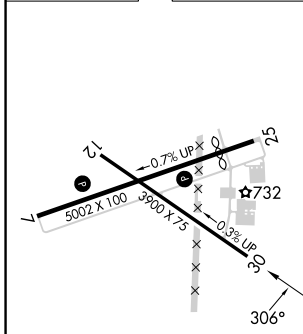
ASOS 128.075	CEDAR RAPIDS APP CON * 119.7 266.8	CLNC DEL 119.05	UNICOM 122.8 (CTAF) 0
------------------------	--	---------------------------	---------------------------------



NC-3, 22 FEB 2024 to 21 MAR 2024

NC-3, 22 FEB 2024 to 21 MAR 2024

ELEV 684	D	TDZE 658
----------	----------	----------



CATEGORY	A	B	C	D
LP MDA	1000-1 342 (400-1)			
LNAV MDA	1060-1 402 (400-1)	1060-1½ 402 (400-1½)		
C CIRCLING	1220-1 536 (600-1)	1240-1 556 (600-1)	1440-2¼ 756 (800-2¼)	1440-2½ 756 (800-2½)

REIL Rwy 7 and 25 **0**
MIRL Rwy 7-25 and 12-30 **0**

VOR/DME IOW 116.2 Chan 109	APP CRS 017°	Rwy Idg TDZE Apt Elev	N/A N/A 684
--	------------------------	-----------------------------	--

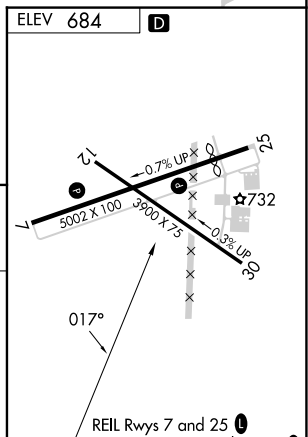
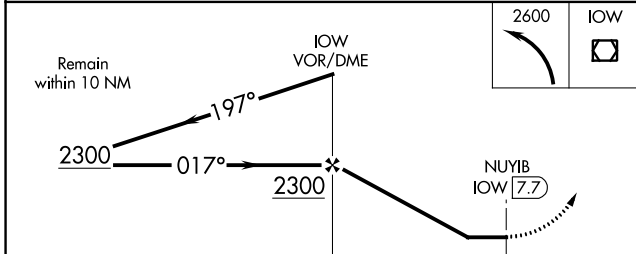
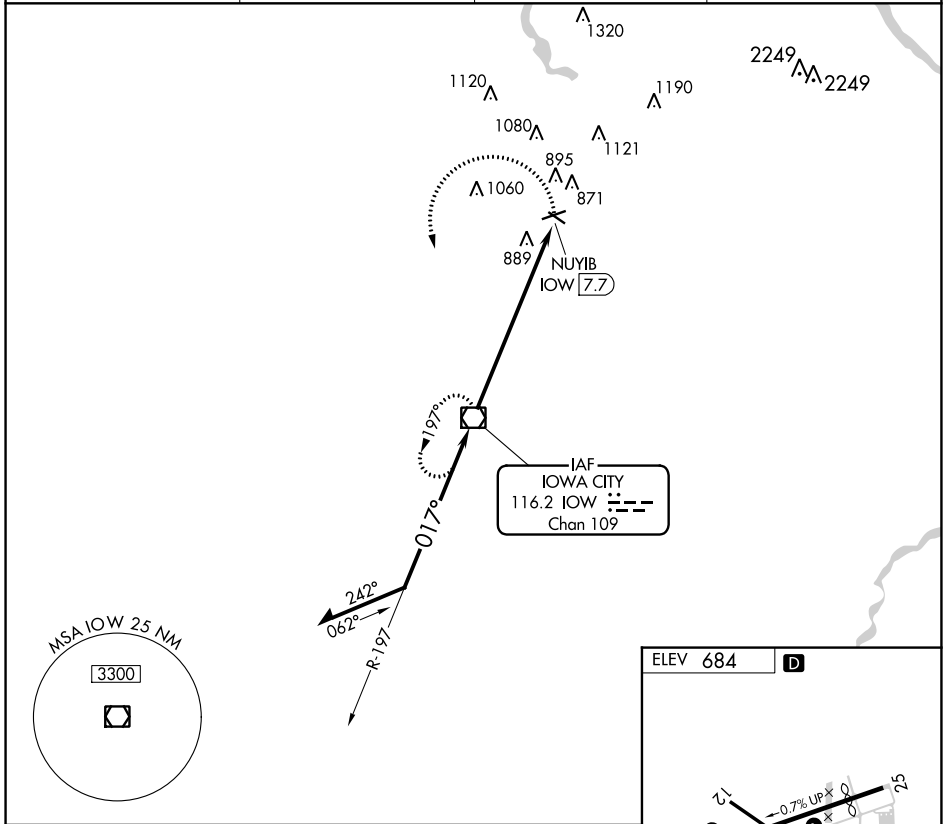
VOR-A

IOWA CITY MUNI (IOW)

⚠ If local altimeter setting not received, use Cedar Rapids altimeter setting and increase all MDAs 80 feet. Rwy 7, 12 helicopter visibility reduction below 1 SM NA. Circling Rwy 12 NA at night.

MISSED APPROACH: Climbing left turn to 2600 direct IOW VOR/DME and hold.

ASOS 128.075	CEDAR RAPIDS APP CON ★ 119.7 266.8	CLNC DEL 119.05	UNICOM 122.8 (CTAF) 0
------------------------	--	---------------------------	---------------------------------



CATEGORY	A	B	C	D	FAF to MAP 7.7 NM					
C CIRCLING	1 280-1 596 (600-1)		NA		Knots	60	90	120	150	180
					Min:Sec	7:42	5:08	3:51	3:05	2:34

NC-3, 22 FEB 2024 to 21 MAR 2024

NC-3, 22 FEB 2024 to 21 MAR 2024