

NDB IRS 382	APP CRS 165°	Rwy Idg 5201
		TDZE 915
		Apt Elev 925

NDB RWY 19

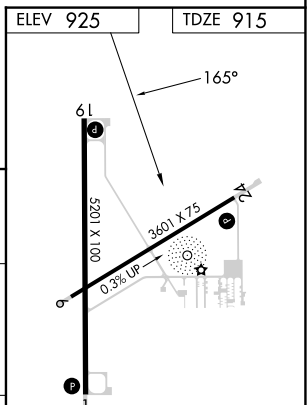
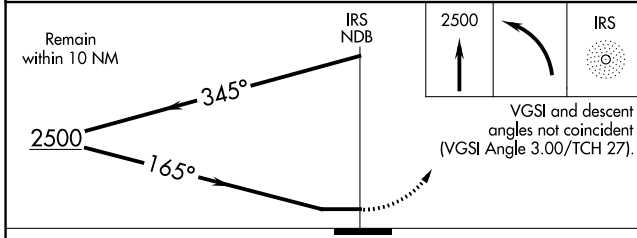
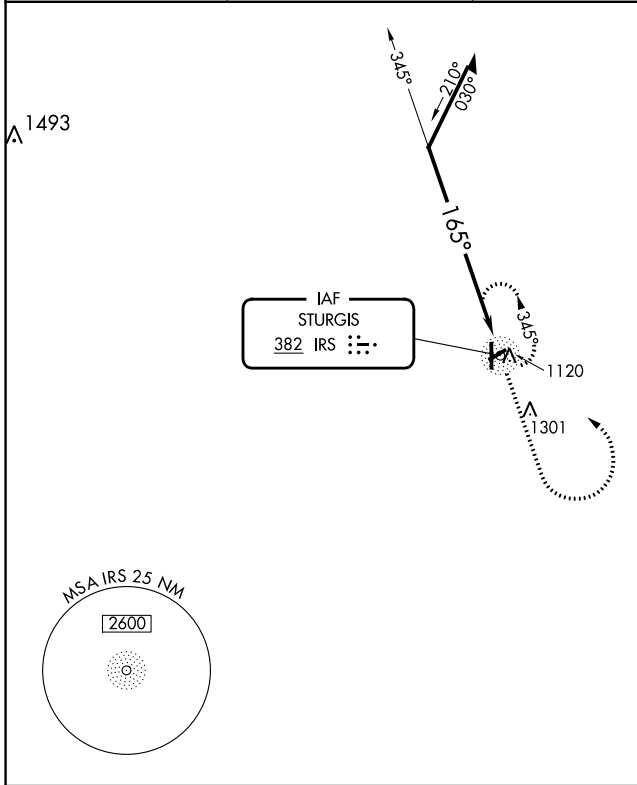
KIRSCH MUNI (IRS)

RADAR required for procedure entry.

▼
▲ Procedure NA at night. Rwy 19 helicopter visibility reduction below 1 SM NA.

MISSED APPROACH: Climb to 2500 then left turn direct IRS NDB and hold.

AWOS-3 121.325	GREAT LAKES APP CON * 121.2 239.25	CLNC DEL 118.325	UNICOM 123.05 (CTAF)
--------------------------	--	----------------------------	--------------------------------



CATEGORY	A	B	C	D
S-19	1520-1	605 (600-1)	1520-1¾	605 (600-1¾)
CIRCLING	1520-1	595 (600-1)	1620-2 695 (700-2)	1620-2¼ 695 (700-2¼)

REIL Rws 1, 19 and 24
MIRL Rws 1-19 and 6-24

EC-1, 22 FEB 2024 to 21 MAR 2024

EC-1, 22 FEB 2024 to 21 MAR 2024

NDB IRS 382	APP CRS 236°	Rwy Idg TDZE Apt Elev	3601 925 925
-----------------------	------------------------	-----------------------------	---

NDB RWY 24

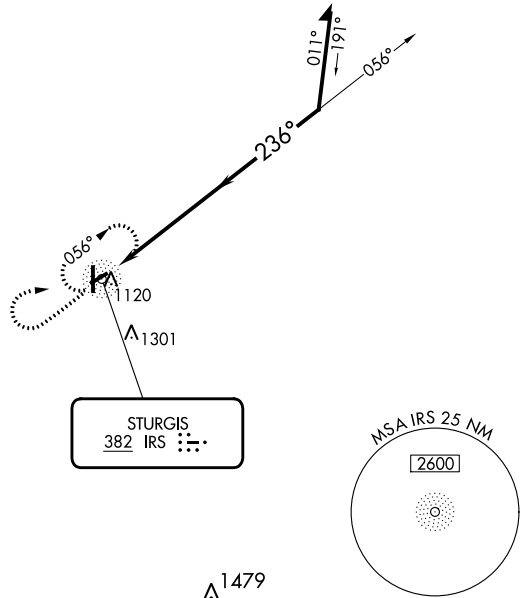
KIRSCH MUNI (IRS)

RADAR required for procedure entry.

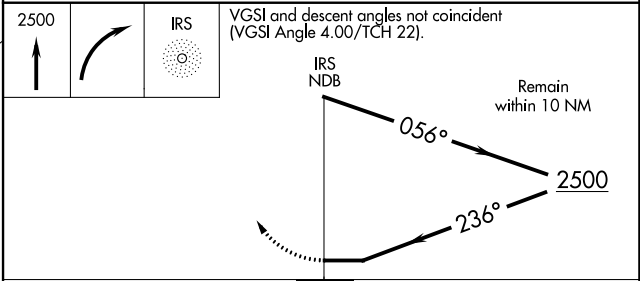
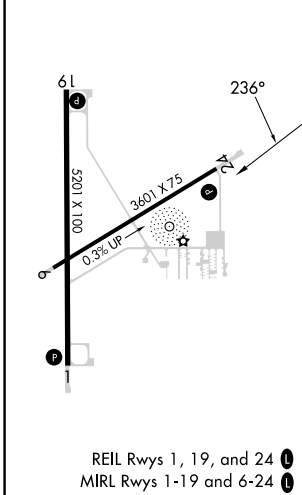
▼ Circling Rwy 6 NA at night.
▲ Rwy 24 helicopter visibility reduction below ¼ SM NA.

MISSED APPROACH: Climb to 2500 then right turn direct IRS NDB and hold.

AWOS-3 121.325	GREAT LAKES APP CON * 121.2 239.25	CLNC DEL 118.325	UNICOM 123.05 (CTAF) 0
--------------------------	--	----------------------------	---



ELEV 925	TDZE 925
----------	----------



CATEGORY	A	B	C	D
S-24	1500-1	575 (600-1)	1500-1½	575 (600-1½)
C CIRCLING	1500-1	575 (600-1)	1620-2 695 (700-2)	1620-2¼ 695 (700-2¼)

WAAS CH 42915 W01A	APP CRS 006°	Rwy Idg 5201 TDZE 915 Apt Elev 925
--	------------------------	---

RNAV (GPS) RWY 1

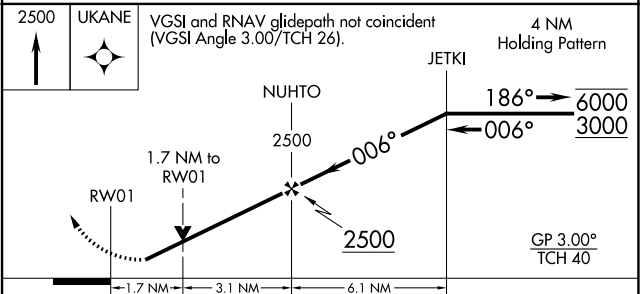
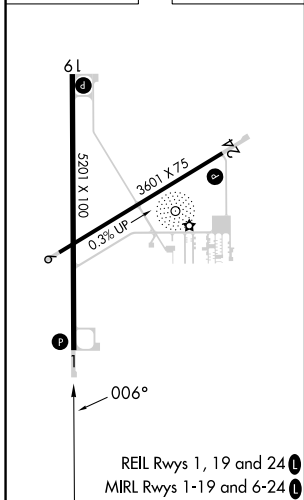
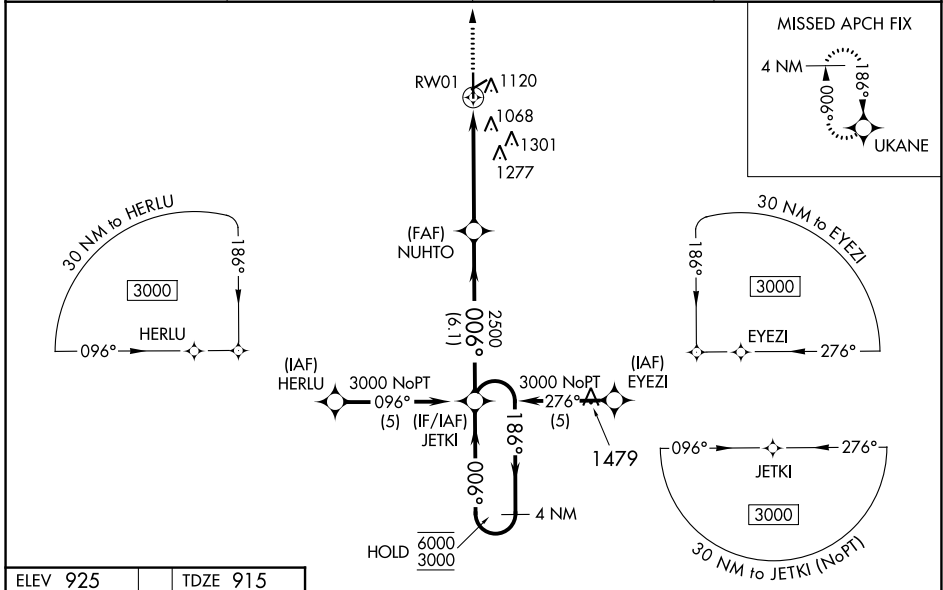
KIRSCH MUNI (IRS)

RNP APCH - GPS.

⚠ Circling Rwy 6 NA at night. Rwy 1 helicopter visibility reduction below $\frac{3}{4}$ SM NA. For uncompensated Baro-VNAV systems, LNAV/VNAV NA below -16°C or above 47°C. When local altimeter setting not received, use Three Rivers altimeter setting and increase LPV DA to 1219 feet; increase LNAV/VNAV DA to 1395 feet and all visibilities $\frac{1}{2}$ SM. Increase all MDAs 60 feet and LNAV visibility Cat C/D $\frac{1}{2}$ SM, and Circling visibility Cat C/D $\frac{1}{4}$ SM. VDP NA when using Three Rivers altimeter setting. Baro-VNAV NA when using Three Rivers altimeter setting.

MISSED APPROACH: Climb to 2500 direct UKANE and hold.

AWOS-3 121.325	GREAT LAKES APP CON * 121.2 239.25	CLNC DEL 118.325	UNICOM 123.05 (CTAF) 0
--------------------------	--	----------------------------	---



CATEGORY	A	B	C	D
LPV DA	1178- $\frac{7}{8}$		263 (300- $\frac{7}{8}$)	
LNAV/VNAV DA	1354-1 $\frac{1}{4}$		439 (500-1 $\frac{1}{4}$)	
LNAV MDA	1480-1	565 (600-1)	1480-1 $\frac{1}{8}$	565 (600-1 $\frac{1}{8}$)
CIRCLING	1480-1	555 (600-1)	1620-2 695 (700-2)	1620-2 $\frac{1}{4}$ 695 (700-2 $\frac{1}{4}$)

EC-1, 22 FEB 2024 to 21 MAR 2024

EC-1, 22 FEB 2024 to 21 MAR 2024

WAAS CH 90230 W19A	APP CRS 186°	Rwy Idg TDZE Apt Elev	5201 915 925
--	------------------------	-----------------------------	---

RNAV (GPS) RWY 19

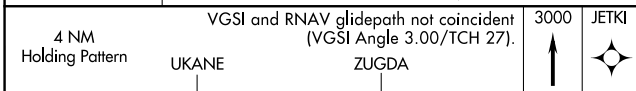
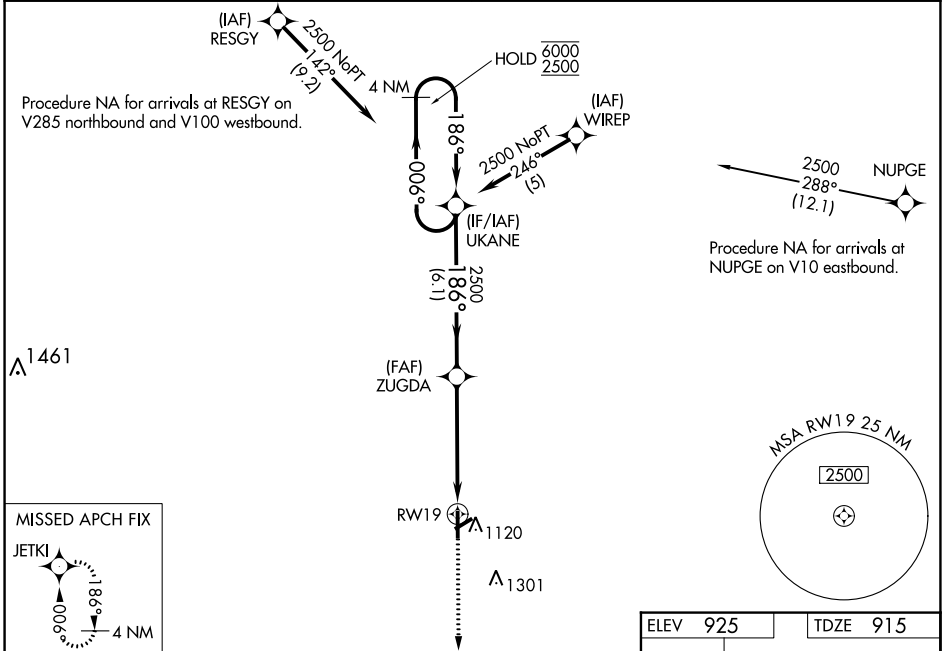
KIRSCH MUNI (IRS)

RNP APCH - GPS.

- ⚠ Circling Rwy 6 NA at night. Rwy 19 helicopter visibility reduction below ¼ SM NA. Baro-VNAV NA.
- ⚠ When local altimeter setting not received, use Three Rivers altimeter setting and increase LPV DA to 1276 feet and all visibilities ½ SM. Increase LNAV/VNAV DA to 1270 feet and all visibilities ½ SM. Increase all MDAs 60 feet and LNAV visibility Cat C/D ¼ SM, and Circling visibility Cat C/D ½ SM.

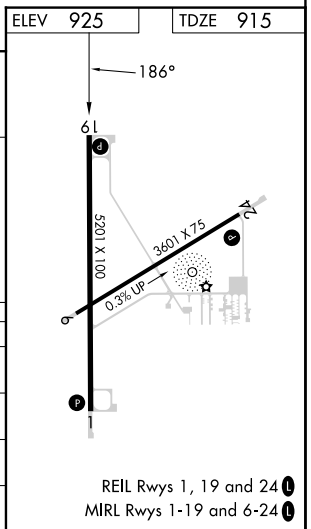
MISSED APPROACH:
Climb to 3000 direct JETKI and hold.

AWOS-3 121.325	GREAT LAKES APP CON * 121.2 239.25	CLNC DEL 118.325	UNICOM 123.05 (CTAF) 0
--------------------------	--	----------------------------	----------------------------------



GP 3.00° TCH 40	6.1 NM	3.4 NM	1.5 NM
--------------------	--------	--------	--------

CATEGORY	A	B	C	D
LPV DA		1235-7/8	320 (400-7/8)	
LNAV/VNAV DA		1229-7/8	314 (400-7/8)	
LNAV MDA	1400-1	485 (500-1)	1400-1 3/8	485 (500-1 3/8)
CIRCLING	1440-1	515 (600-1)	1620-2 695 (700-2)	1620-2 1/4 695 (700-2 1/4)



EC-1, 22 FEB 2024 to 21 MAR 2024

EC-1, 22 FEB 2024 to 21 MAR 2024