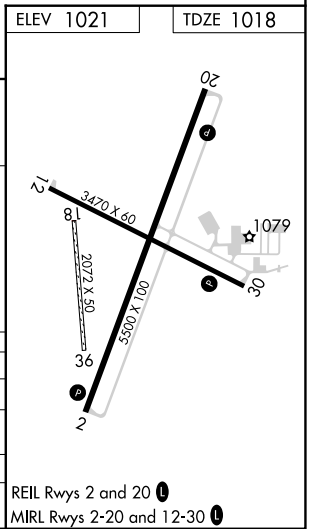
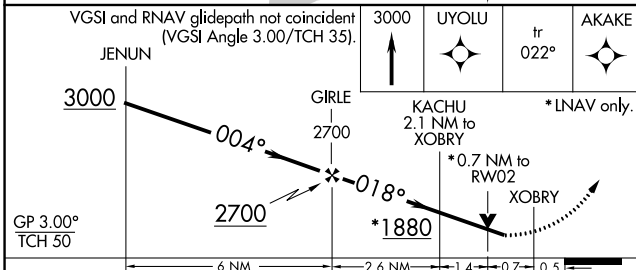
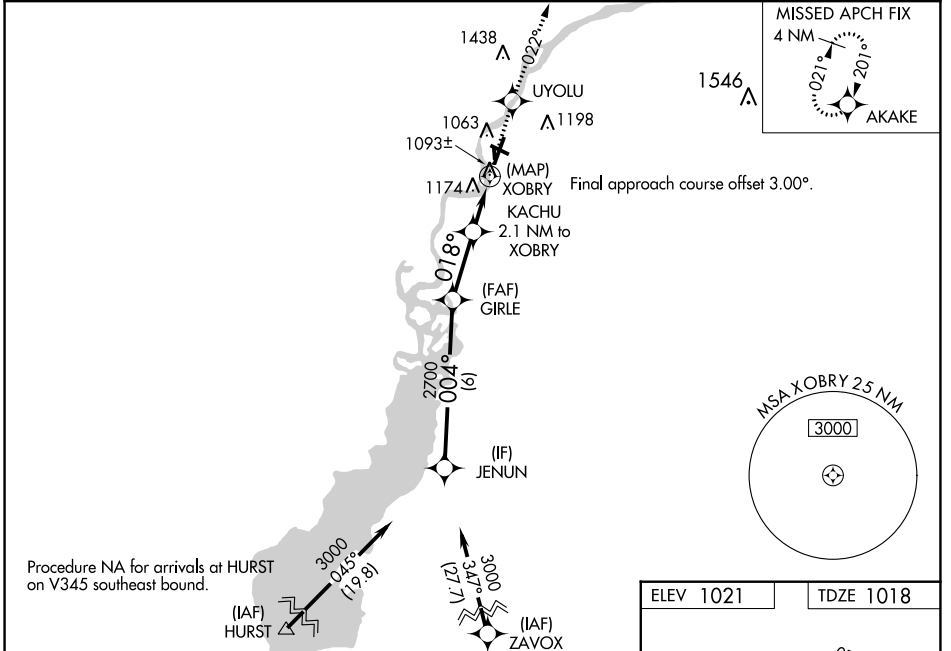


WAAS CH <b>77731</b> <b>W02A</b>	APP CRS <b>018°</b>	Rwy Idg TDZE Apt Elev	<b>5500</b> <b>1018</b> <b>1021</b>
--	------------------------	-----------------------------	---

# RNAV (GPS) RWY 2

ALEXANDER FIELD SOUTH WOOD COUNTY (ISW)

RNP APCH.		UNICOM <b>122.8 (CTAF) 0</b>	
ASOS <b>126.575</b>		MINNEAPOLIS CENTER <b>124.4 317.7</b>	
<p><b>▼</b> Circling NA to Rwys 18 and 36. Circling Rwy 20, 30 NA at night. Baro-VNAV and VDP NA when using Stevens Point altimeter setting. Rwy 2 helicopter visibility reduction below 3/4 SM NA. For uncompensated Baro-VNAV systems, LNAV/VNAV NA below -17°C or above 54°C. When local altimeter setting not received, use Stevens Point altimeter setting; increase LPV DA to 1351 feet; increase LNAV/VNAV DA to 1546 feet and all visibilities 1/8 SM; increase all MDAs 60 feet, LNAV Cat C and D visibilities 1/8 SM and Circling Cat C and D visibilities 1/4 SM.</p>		<p><b>MISSED APPROACH:</b> Climb to 3000 direct UYOLU and on track 022° to AKAKE and hold.</p>	



CATEGORY	A	B	C	D
LPV DA		1298-1	280 (300-1)	
LNAV/ VNAV DA		1493-1 3/8	475 (500-1 3/8)	
LNAV MDA	1440-1	422 (500-1)	1440-1 1/4	422 (500-1 1/4)
<b>CIRCLING</b>	1480-1 459 (500-1)	1560-1 539 (600-1)	1620-1 1/2 599 (600-1 1/2)	1800-2 1/2 779 (800-2 1/2)

EC-3, 03 DEC 2020 to 31 DEC 2020

EC-3, 03 DEC 2020 to 31 DEC 2020

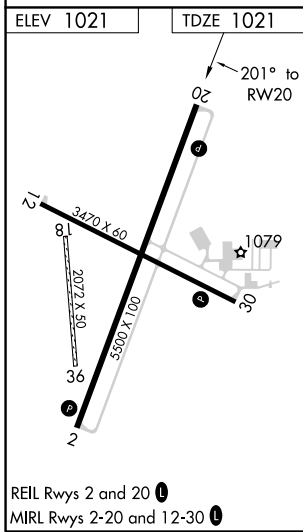
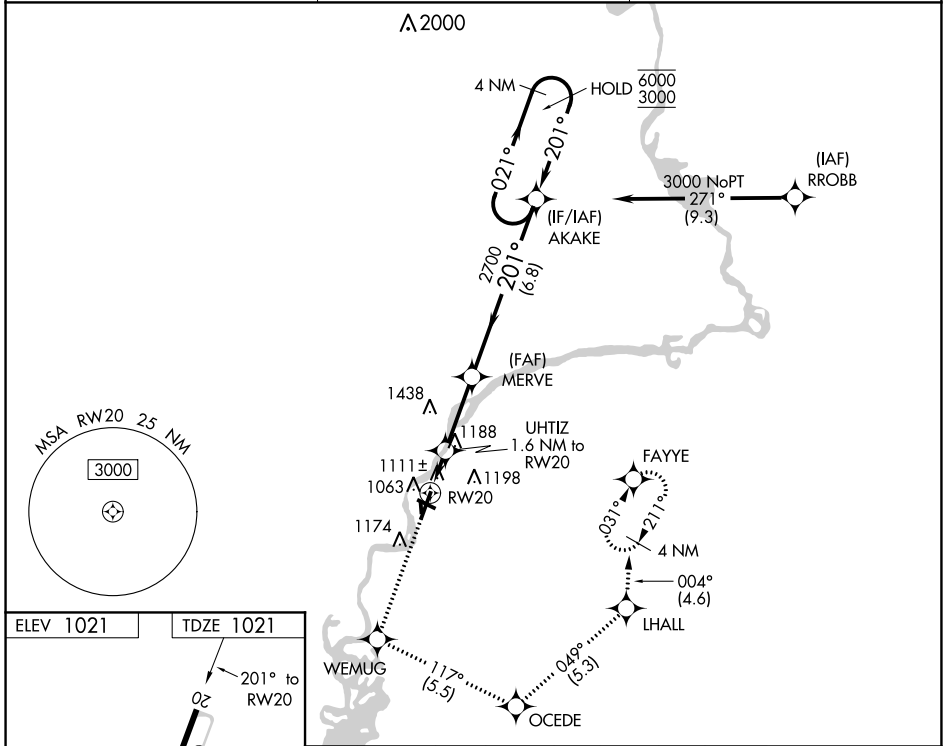
APP CRS	Rwy Idg	<b>5500</b>
<b>201°</b>	TDZE	<b>1021</b>
	Apt Elev	<b>1021</b>

# RNAV (GPS) RWY 20

ALEXANDER FIELD SOUTH WOOD COUNTY (ISW)

RNP APCH.	MISSED APPROACH: Climb to 3000 direct WEMUG and on track 117° to OCEDE and on track 049° to LHALL and on track 004° to FAYYE and hold.
<p>▼ Circling NA to Rws 18 and 36.</p> <p>▲ Rwy 20 helicopter visibility reduction below 1 SM NA.</p> <p>▲ Straight-in Rwy 20 NA at night, Circling Rwy 20, 30 NA at night.</p>	

ASOS <b>126.575</b>	MINNEAPOLIS CENTER <b>124.4 317.7</b>	UNICOM <b>122.8 (CTAF)</b>
------------------------	--	-------------------------------



3000	WEMUG	tr 117°	OCEDE	tr 049°	LHALL	tr 004°	FAYYE	4 NM Holding Pattern
	UHTIZ	MERVE	AKAKE					
	1.6 NM to RW20							
	≤ 3.50° TCH 42							
	1640	2700						
	1.6 NM	2.8 NM	6.8 NM					
CATEGORY	A	B	C	D				
LNAV MDA	1380-1		359 (400-1)					
CIRCLING	1480-1 459 (500-1)	1560-1 539 (600-1)	1620-1½ 599 (600-1½)	1800-2½ 779 (800-2½)				

EC-3, 03 DEC 2020 to 31 DEC 2020

EC-3, 03 DEC 2020 to 31 DEC 2020

INSTRUMENT APPROACH PROCEDURE CHARTS

**A IFR ALTERNATE AIRPORT MINIMUMS**

Standard alternate minimums for non-precision approaches and approaches with vertical guidance [NDB, VOR, LOC, TACAN, LDA, SDF, VOR/DME, ASR, RNAV (GPS) or RNAV (RNP)] are 800-2. Standard alternate minimums for precision approaches (ILS, PAR, or GLS) are 600-2. Airports within this geographical area that require alternate minimums other than standard or alternate minimums with restrictions are listed below. NA - means alternate minimums are not authorized due to unmonitored facility, absence of weather reporting service, or lack of adequate navigation coverage. Civil pilots see FAR 91. IFR Alternate Minimums: Ceiling and Visibility Minimums not applicable to USA/USN/USAF. Pilots must review the IFR Alternate Minimums Notes for alternate airfield suitability.

**NAME ALTERNATE MINIMUMS**

**ALTON/ST. LOUIS, IL**  
ST. LOUIS  
RGNL (ALN).....**ILS or LOC Rwy 29<sup>1</sup>**  
**NDB Rwy 17<sup>2</sup>**  
**RNAV (GPS) Rwy 35**  
**VOR-A**

NA when local weather not available.  
<sup>1</sup>NA when control tower closed.  
<sup>2</sup>Categories A, B, 900-2; Category C, 900-2½;  
Category D, 900-2¾.

**ANTIGO, WI**  
LANGLADE  
COUNTY (AIG).....**RNAV (GPS) Rwy 9<sup>1</sup>**  
**RNAV (GPS) Rwy 17<sup>2</sup>**  
**RNAV (GPS) Rwy 27<sup>3</sup>**  
**RNAV (GPS) Rwy 35<sup>2</sup>**

<sup>1</sup>Categories A, B, C, D, 800-2¼.  
<sup>2</sup>NA when local weather not available.  
<sup>3</sup>Category D, 800-2¼.

**APPLETON, WI**  
APPLETON  
INTL (ATW).....**ILS or LOC Rwy 3<sup>1</sup>**  
**RNAV (GPS) Rwy 3<sup>2</sup>**  
**RNAV (GPS) Rwy 12<sup>2</sup>**  
**RNAV (GPS) Rwy 21<sup>2</sup>**

<sup>1</sup>NA when control tower closed.  
<sup>2</sup>NA when local weather not available.

**ASHLAND, WI**  
JOHN F. KENNEDY  
MEMORIAL (ASX).....**RNAV (GPS) Rwy 2**  
**RNAV (GPS) Rwy 13**  
**RNAV (GPS) Rwy 20**  
**RNAV (GPS) Rwy 31**

NA when local weather not available.  
Category D, 800-2¼.

**BARABOO, WI**  
BARABOO-WISCONSIN DELLS  
RGNL (DLL).....**RNAV (GPS) Rwy 1**  
**RNAV (GPS) Rwy 19**  
**VOR-A**

NA when local weather not available.

**NAME ALTERNATE MINIMUMS**

**BELLEVILLE, IL**  
SCOTT AFB/MIDAMERICA  
(BLV).....**ILS or LOC Rwy 14L<sup>12</sup>**  
**ILS or LOC Rwy 14R<sup>1</sup>**  
**ILS or LOC Rwy 32L<sup>3</sup>**  
**ILS or LOC Rwy 32R<sup>3</sup>**  
**RADAR-1<sup>4</sup>**  
**RNAV (GPS) Rwy 14L<sup>25</sup>**  
**RNAV (GPS) Rwy 32R<sup>25</sup>**  
**TACAN-A<sup>26</sup>**

<sup>1</sup>ILS, Category B, 700-2; C, 800-2¼;  
Category D, 800-2¼; Category E, 800-2¾;  
LOC, Category C, 800-2¼; Category D, 800-2¼;  
Category E, 800-2¾.  
<sup>2</sup>NA when local weather not available.  
<sup>3</sup>LOC, Category C, 800-2¼; Category D, 800-2¼;  
Category E, 800-2¾.  
<sup>4</sup>Category C, 800-2¼; Category D, 800-2¼;  
Category E, 800-2¾.  
<sup>5</sup>Category C, 800-2¼; Category D, 800-2¼.  
<sup>6</sup>Categories A, B, C, 800-2¼;  
Category D, 800-2¼; Category E, 800-2¾.

**BLACK RIVER FALLS, WI**  
BLACK RIVER FALLS  
AREA (BCK).....**RNAV (GPS) Rwy 8**  
**RNAV (GPS) Rwy 26**

NA when local weather not available.

**BLOOMINGTON/NORMAL, IL**  
CENTRAL IL RGNL ARPT AT BLOOMINGTON-  
NORMAL (BMI).....**ILS or LOC Rwy 2<sup>12</sup>**  
**ILS or LOC Rwy 20<sup>13</sup>**  
**ILS or LOC Rwy 29<sup>13</sup>**  
**LOC BC Rwy 11<sup>14</sup>**  
**RNAV (GPS) Rwy 2<sup>4</sup>**  
**RNAV (GPS) Rwy 11<sup>4</sup>**  
**RNAV (GPS) Rwy 20<sup>4</sup>**  
**RNAV (GPS) Rwy 29<sup>4</sup>**

NA when local weather not available.  
<sup>1</sup>NA when control tower closed.  
<sup>2</sup>LOC, Category C, 800-2¼; Category D, 800-2¼.  
<sup>3</sup>ILS, LOC, Category C, 800-2¼;  
Category D, 800-2¼.  
<sup>4</sup>Category C, 800-2¼; Category D, 800-2¼.

03 DEC 2020 to 31 DEC 2020

03 DEC 2020 to 31 DEC 2020

NAME ALTERNATE MINIMUMS

**BOSCOBEL, WI**

BOSCOBEL (OVS).....RNAV (GPS) Rwy 7<sup>1</sup>  
 RNAV (GPS) Rwy 25<sup>2</sup>

NA when local weather not available.  
<sup>1</sup>Category A, 900-2; Category B, 1000-2;  
 Category C, 1000-2½.  
<sup>2</sup>Categories A, B, 1000-4; Category C, 1100-4.

**BURLINGTON, WI**

BURLINGTON  
 MUNI (BUU).....RNAV (GPS) Rwy 11  
 RNAV (GPS) Rwy 29  
 VOR-A<sup>1</sup>

Category D, 800-2½.  
<sup>1</sup>NA when local weather not available.

**CAHOKIA/ST. LOUIS, IL**

ST. LOUIS  
 DOWNTOWN (CPS).....ILS or LOC Rwy 30L<sup>1</sup>  
 RNAV (GPS) Rwy 12R<sup>2</sup>  
 RNAV (GPS) Rwy 30L<sup>3</sup>  
 RNAV (GPS) Rwy 30R<sup>3</sup>

<sup>1</sup>NA when control tower closed.  
<sup>2</sup>Category D, 800-2½.  
<sup>3</sup>NA when local weather not available.

**CAIRO, IL**

CAIRO  
 RGNL (CIR).....NDB Rwy 14<sup>1</sup>  
 RNAV (GPS) Rwy 14  
 RNAV (GPS) Rwy 32

NA when local weather not available.  
<sup>1</sup>Categories A, B, 1100-2; Category C, 1100-3.

**CARBONDALE-MURPHYSBORO, IL**

SOUTHERN  
 ILLINOIS (MDH).....RNAV (GPS) Rwy 18L  
 RNAV (GPS) Rwy 36R  
 NA when local weather not available.

**CARMI, IL**

CARMI MUNI (CUL).....RNAV (GPS) Rwy 18  
 RNAV (GPS) Rwy 36  
 NA when local weather not available.

**CHAMPAIGN/URBANA, IL**

UNIVERSITY OF ILLINOIS-  
 WILLARD (CMI).....ILS or LOC Rwy 32R<sup>12</sup>  
 NDB Rwy 32R<sup>34</sup>  
 RADAR-1<sup>14</sup>  
 RNAV (GPS) Rwy 4<sup>34</sup>  
 RNAV (GPS) Rwy 14L<sup>34</sup>  
 RNAV (GPS) Rwy 22<sup>34</sup>  
 RNAV (GPS) Rwy 32R<sup>34</sup>  
 VOR Rwy 4<sup>4</sup>  
 VOR Rwy 14L<sup>4</sup>  
 VOR Rwy 22<sup>4</sup>

<sup>1</sup>NA when control tower closed.  
<sup>2</sup>LOC, Category C, 800-2½, Category D, 800-2½.  
<sup>3</sup>NA when local weather not available.  
<sup>4</sup>Category C, 800-2½, Category D, 800-2½.

NAME ALTERNATE MINIMUMS

**CHETEK, WI**

CHETEK MUNI-  
 SOUTHWORTH (Y23).....RNAV (GPS) Rwy 17  
 NA when local weather not available.

**CHICAGO, IL**

CHICAGO MIDWAY  
 INTL (MDW).....ILS or LOC Rwy 4R<sup>1</sup>  
 ILS or LOC Rwy 13C<sup>1</sup>  
 ILS or LOC/DME Rwy 31C<sup>2</sup>  
 RNAV (GPS) Rwy 4L<sup>3</sup>  
 RNAV (GPS) Rwy 22R<sup>3</sup>  
 RNAV (GPS) Rwy 31R<sup>3</sup>  
 RNAV (GPS) Z Rwy 4R<sup>3</sup>  
 RNAV (GPS) Z Rwy 13C<sup>3</sup>  
 RNAV (GPS) Z Rwy 22L<sup>3</sup>  
 RNAV (GPS) Z Rwy 31C<sup>3</sup>

<sup>1</sup>LOC Category D, 800-2½.  
<sup>2</sup>ILS, Category C, 800-2; Category D, 800-2½;  
 LOC Category D, 800-2½.  
<sup>3</sup>Category D, 800-2½.

**CHICAGO O'HARE**

INTL (ORD).....ILS or LOC Rwy 4R<sup>1</sup>  
 ILS or LOC Rwy 22L<sup>1</sup>  
 ILS or LOC Rwy 22R<sup>1</sup>  
 RNAV (GPS) Rwy 4R<sup>2</sup>  
 RNAV (GPS) Rwy 22L<sup>2</sup>  
 RNAV (GPS) Rwy 22R<sup>2</sup>

<sup>1</sup>LOC, Category D, 800-2½.  
<sup>2</sup>Category D, 800-2½.

LANSING MUNI (IGQ).....RNAV (GPS) Rwy 27  
 RNAV (GPS) Rwy 36  
 VOR-A

NA when local weather not available.

**CHICAGO/PROSPECT HEIGHTS/  
 WHEELING, IL**

CHICAGO  
 EXECUTIVE (PWK).....ILS or LOC Rwy 16  
 RNAV (GPS) Rwy 16  
 NA when local weather not available.

**CHICAGO/ROCKFORD, IL**

CHICAGO/ROCKFORD  
 INTL (RFD).....ILS or LOC Rwy 1<sup>12</sup>  
 ILS or LOC Rwy 7<sup>3</sup>  
 LOC BC Rwy 19<sup>12</sup>  
 RNAV (GPS) Rwy 1<sup>4</sup>  
 RNAV (GPS) Rwy 7<sup>4</sup>  
 RNAV (GPS) Rwy 19<sup>4</sup>  
 RNAV (GPS) Rwy 25<sup>4</sup>

<sup>1</sup>NA when local weather not available.  
<sup>2</sup>LOC, Category D, 800-2½.  
<sup>3</sup>ILS, LOC, Category D, 800-2½.  
<sup>4</sup>Category D, 800-2½.

03 DEC 2020 to 31 DEC 2020

03 DEC 2020 to 31 DEC 2020

NAME ALTERNATE MINIMUMS

**CHICAGO/ROMEOVILLE, IL**

LEWIS  
UNIVERSITY (LOT).....RNAV (GPS) Rwy 2  
RNAV (GPS) Rwy 9<sup>1</sup>  
RNAV (GPS) Rwy 20<sup>1</sup>  
RNAV (GPS) Rwy 27<sup>1</sup>

Category D, 800-2½.

<sup>1</sup>NA when local weather not available.**CHICAGO/WAUKEGAN, IL**

WAUKEGAN  
NATIONAL (UGN).....ILS or LOC Rwy 23<sup>12</sup>  
RNAV (GPS) Rwy 5<sup>3</sup>  
RNAV (GPS) Rwy 23<sup>3</sup>

<sup>1</sup>NA when control tower closed.<sup>2</sup>ILS, Category D, 700-2¼; LOC, Category D, 800-2¼.<sup>3</sup>Category D, 800-2¼.**CHICAGO/WEST CHICAGO, IL**

DUPAGE (DPA).....ILS or LOC Rwy 2L<sup>1</sup>  
ILS or LOC Rwy 10  
RNAV (GPS) Rwy 2L  
RNAV (GPS) Rwy 2R  
RNAV (GPS) Rwy 10  
RNAV (GPS) Rwy 20L

NA when local weather not available.

<sup>1</sup>ILS, Categories A, B, 800-2; Category C, 800-2¼; Category D, 800-2½; LOC, Category C, 800-2¼; Category D, 800-2½.**CLINTONVILLE, WI**

CLINTONVILLE  
MUNI (CLI).....RNAV (GPS) Rwy 22  
NA when local weather not available.

**CUMBERLAND, WI**

CUMBERLAND  
MUNI (UBE).....RNAV (GPS) Rwy 9  
RNAV (GPS) Rwy 27

NA when local weather not available.

Category D, 800-2¼.

**DANVILLE, IL**

VERMILION  
RGNL (DNV).....ILS or LOC Rwy 21  
RNAV (GPS) Rwy 3  
RNAV (GPS) Rwy 21  
RNAV (GPS) Rwy 34  
VOR/DME Rwy 3

NA when local weather not available.

NAME ALTERNATE MINIMUMS

**DE KALB, IL**

DE KALB TAYLOR  
MUNI (DKB).....ILS or LOC Rwy 2<sup>1</sup>  
RNAV (GPS) Rwy 2  
RNAV (GPS) Rwy 9  
RNAV (GPS) Rwy 20  
RNAV (GPS) Rwy 27

NA when local weather not available.

<sup>1</sup>ILS, LOC, Categories A, B, 1000-2, Categories C, D 1000-3.**DECATUR, IL**

DECATUR (DEC).....ILS or LOC Rwy 6<sup>1</sup>  
LOC BC Rwy 24<sup>234</sup>  
RNAV (GPS) Rwy 6<sup>45</sup>  
RNAV (GPS) Rwy 12<sup>45</sup>  
RNAV (GPS) Rwy 18<sup>45</sup>  
RNAV (GPS) Rwy 24<sup>45</sup>  
RNAV (GPS) Rwy 30<sup>34</sup>  
RNAV (GPS) Rwy 36<sup>34</sup>  
VOR Rwy 18<sup>5</sup>  
VOR Rwy 36<sup>34</sup>

<sup>1</sup>ILS, NA when control tower closed. NA when local weather not available, except for operators with approved weather reporting services; LOC, NA.<sup>2</sup>NA when control tower closed.<sup>3</sup>NA when local weather not available, except for operators with approved weather reporting services.<sup>4</sup>Category D, 800-2¼.<sup>5</sup>NA when local weather not available.**EAGLE RIVER, WI**

EAGLE RIVER  
UNION (EGV).....RNAV (GPS) Rwy 4  
RNAV (GPS) Rwy 22

NA when local weather not available.

**EAU CLAIRE, WI**

CHIPPEWA VALLEY  
RGNL (EAU).....ILS or LOC Rwy 22<sup>1</sup>  
LOC BC Rwy 4<sup>2</sup>  
RNAV (GPS) Rwy 4<sup>2</sup>  
RNAV (GPS) Rwy 22<sup>2</sup>  
VOR-A<sup>3</sup>

NA when local weather not available.

<sup>1</sup>LOC, Category C, 800-2¼, Category D, 1300-3.<sup>2</sup>Category C, 800-2¼; Category D, 1300-3.<sup>3</sup>Categories A, B, 900-2; Category C, 900-2½; Category D, 1000-3.**EFFINGHAM, IL**

EFFINGHAM COUNTY  
MEMORIAL (1H2).....RNAV (GPS) Rwy 11<sup>2</sup>  
RNAV (GPS) Rwy 11<sup>3</sup>  
RNAV (GPS) Rwy 29<sup>1</sup>

<sup>1</sup>NA when local weather not available.<sup>2</sup>Category D, 900-2½.<sup>3</sup>Category C, 900-2½; Category D, 900-2¼.

NAME ALTERNATE MINIMUMS

**FLORA, IL**

FLORA MUNI (FOA).....RNAV (GPS) Rwy 3  
RNAV (GPS) Rwy 21

NA when local weather not available.

**FOND DU LAC, WI**

FOND DU LAC  
COUNTY (FLD).....RNAV (GPS) Rwy 18  
RNAV (GPS) Rwy 36  
VOR Rwy 18  
VOR/DME Rwy 36

NA when local weather not available.  
Category D, 800-2¼.

**FREEPORT, IL**

ALBERTUS (FEP).....RNAV (GPS) Rwy 6  
RNAV (GPS) Rwy 24  
VOR Rwy 24

NA when local weather not available.

**GALESBURG, IL**

GALESBURG  
MUNI (GBG).....RNAV (GPS) Rwy 3  
RNAV (GPS) Rwy 21

NA when local weather not available.

**GREEN BAY, WI**

GREEN BAY-AUSTIN STRAUBEL  
INTL (GRB).....ILS or LOC Rwy 6  
LOC BC Rwy 24  
RADAR-1

NA when control tower closed.

**HARRISBURG, IL**

HARRISBURG-  
RALEIGH (HSB).....RNAV (GPS) Rwy 6

NA when local weather not available.

**HAYWARD, WI**

SAWYER  
COUNTY (HYR).....RNAV (GPS) Rwy 3  
RNAV (GPS) Rwy 21

NA when local weather not available.  
Category C, 900-2½; Category D, 900-2¾.

**JACKSONVILLE, IL**

JACKSONVILLE  
MUNI (IJX).....RNAV (GPS) Rwy 4  
RNAV (GPS) Rwy 13  
RNAV (GPS) Rwy 22  
RNAV (GPS) Rwy 31

NA when local weather not available.

NAME ALTERNATE MINIMUMS

**JANESVILLE, WI**

SOUTHERN WISCONSIN  
RGNL (JVL).....ILS or LOC Rwy 4<sup>13</sup>  
ILS or LOC Rwy 32<sup>2</sup>  
RNAV (GPS) Rwy 4  
RNAV (GPS) Rwy 14  
RNAV (GPS) Rwy 22

NA when local weather not available.

<sup>1</sup>NA when control tower closed.

<sup>2</sup>ILS, LOC, Categories A, B, 1100-2; Categories C, D, 1100-3.

<sup>3</sup>ILS, Category D, 700-2.

**JUNEAU, WI**

DODGE COUNTY (UNU).....LOC Rwy 26  
NDB Rwy 20  
RNAV (GPS) Rwy 2  
RNAV (GPS) Rwy 8  
RNAV (GPS) Rwy 20  
RNAV (GPS) Rwy 26

NA when local weather not available.

**KANKAKEE, IL**

GREATER  
KANKAKEE (IKK).....ILS or LOC Rwy 4<sup>12</sup>  
RNAV (GPS) Rwy 4<sup>34</sup>  
RNAV (GPS) Rwy 16<sup>34</sup>  
RNAV (GPS) Rwy 22<sup>34</sup>  
RNAV (GPS) Rwy 34<sup>3</sup>

<sup>1</sup>LOC, NA when local weather not available.

<sup>2</sup>LOC, Category D, 800-2¼.

<sup>3</sup>NA when local weather not available.

<sup>4</sup>Category D, 800-2¼.

**KENOSHA, WI**

KENOSHA  
RGNL (ENW).....ILS or LOC Rwy 7L

NA when control tower closed.

**LA CROSSE, WI**

LA CROSSE  
RGNL (LSE).....ILS or LOC Rwy 18<sup>12</sup>  
RNAV (GPS) Rwy 4<sup>34</sup>  
RNAV (GPS) Rwy 13<sup>35</sup>  
RNAV (GPS) Rwy 18<sup>35</sup>  
RNAV (GPS) Rwy 22<sup>36</sup>  
RNAV (GPS) Rwy 31<sup>37</sup>  
RNAV (GPS) Rwy 36<sup>35</sup>

<sup>1</sup>NA when control tower closed.

<sup>2</sup>LOC, Categories A, B, 1000-2, Categories C, D, 1200-3.

<sup>3</sup>NA when local weather not available.

<sup>4</sup>Categories A, B, 1000-2; Categories C, D, 1200-3.

<sup>5</sup>Category B, 900-2; Categories C, D, 1200-3.

<sup>6</sup>Categories A, B, 1200-2; Categories C, D, 1200-3.

<sup>7</sup>Categories A, B, 1100-2; Categories C, D, 1200-3.

NAME ALTERNATE MINIMUMS

**LACON, IL**

MARSHALL COUNTY (C75).....RNAV (GPS) Rwy 13  
NA when local weather not available.

**LADYSMITH, WI**

RUSK COUNTY (RCX).....NDB Rwy 32  
RNAV (GPS) Rwy 14  
RNAV (GPS) Rwy 32  
NA when local weather not available.

**LAND O'LAKES, WI**

KING'S LAND O'LAKES (LNL).....RNAV (GPS) Rwy 14  
RNAV (GPS) Rwy 32  
NA when local weather not available.

**LAWRENCEVILLE, IL**

LAWRENCEVILLE-VINCENNES INTL (LWV).....RNAV (GPS) Rwy 9  
RNAV (GPS) Rwy 18  
RNAV (GPS) Rwy 27  
RNAV (GPS) Rwy 36  
NA when local weather not available.

**LINCOLN, IL**

LOGAN COUNTY (AAA).....RNAV (GPS) Rwy 3  
RNAV (GPS) Rwy 21  
VOR Rwy 3  
NA when local weather not available.

**LITCHFIELD, IL**

LITCHFIELD MUNI (3LF).....RNAV (GPS) Rwy 9  
RNAV (GPS) Rwy 18  
RNAV (GPS) Rwy 27  
RNAV (GPS) Rwy 36  
NA when local weather not available.

**LONE ROCK, WI**

TRI-COUNTY RGNL (LNR).....RNAV (GPS) Rwy 9<sup>1</sup>  
RNAV (GPS) Rwy 27<sup>2</sup>  
NA when local weather not available.  
<sup>1</sup>Categories A, B, C, 1000-4.  
<sup>2</sup>Categories A, B, C, 900-4.

**MACOMB, IL**

MACOMB MUNI (MQB).....LOC Rwy 27<sup>1</sup>  
RNAV (GPS) Rwy 9  
RNAV (GPS) Rwy 27  
NA when local weather not available.  
<sup>1</sup>NA when FBO closed.

NAME ALTERNATE MINIMUMS

**MADISON, WI**

DANE COUNTY RGNL-TRUAX FIELD (MSN).....ILS or LOC Rwy 18<sup>12</sup>  
ILS or LOC Rwy 21<sup>13</sup>  
ILS or LOC/DME Rwy 36<sup>14</sup>  
RNAV (GPS) Rwy 3<sup>5</sup>  
RNAV (GPS) Rwy 14<sup>5</sup>  
RNAV (GPS) Rwy 18<sup>5</sup>  
RNAV (GPS) Rwy 21<sup>5</sup>  
RNAV (GPS) Rwy 32<sup>5</sup>  
RNAV (GPS) Rwy 36<sup>5</sup>  
VOR Rwy 14<sup>5</sup>  
VOR Rwy 32<sup>5</sup>

<sup>1</sup>NA when control tower closed.  
<sup>2</sup>LOC, Category D, 900-2¼; Category E, 900-3.  
<sup>3</sup>ILS, LOC, Category D, 900-2¾.  
<sup>4</sup>ILS, LOC, Category D, 900-2¼; Category E, 900-3.  
<sup>5</sup>Category D, 900-2¾.

**MANITOWOC, WI**

MANITOWOC COUNTY (MTW).....ILS or LOC Rwy 1<sup>1</sup>  
RNAV (GPS) Rwy 17<sup>2</sup>  
RNAV (GPS) Rwy 35<sup>2</sup>  
NA when local weather not available.  
<sup>1</sup>LOC, Category C, 800-2¼; Category D, 900-2¼.  
<sup>2</sup>Category C, 800-2¼; Category D, 900-2¼.

**MARION, IL**

VETERANS AIRPORT OF SOUTHERN ILLINOIS (MWA).....ILS or LOC Rwy 20<sup>1</sup>  
RNAV (GPS) Rwy 2  
RNAV (GPS) Rwy 20  
VOR Rwy 2  
NA when local weather not available.  
<sup>1</sup>NA when control tower closed.

**MARSHFIELD, WI**

MARSHFIELD MUNI (MFI).....RNAV (GPS) Rwy 5  
RNAV (GPS) Rwy 16  
RNAV (GPS) Rwy 23  
RNAV (GPS) Rwy 34  
NA when local weather not available.  
Category C, 800-2¼; Category D, 800-2½.

**MATTOON/CHARLESTON, IL**

COLES COUNTY MEMORIAL (MTO).....RNAV (GPS) Rwy 6  
RNAV (GPS) Rwy 11  
RNAV (GPS) Rwy 24  
RNAV (GPS) Rwy 29  
NA when local weather not available.

03 DEC 2020 to 31 DEC 2020

03 DEC 2020 to 31 DEC 2020

20310

NAME ALTERNATE MINIMUMS

**MEDFORD, WI**

TAYLOR COUNTY (MDZ).....RNAV (GPS) Rwy 9  
RNAV (GPS) Rwy 16  
RNAV (GPS) Rwy 27  
RNAV (GPS) Rwy 34  
NA when local weather not available.

**MENOMONIE, WI**

MENOMONIE MUNI-SCORE FIELD (LUM).....RNAV (GPS) Rwy 9<sup>1</sup>  
RNAV (GPS) Rwy 27<sup>2</sup>  
VOR/DME Rwy 27<sup>34</sup>

<sup>1</sup>Category B, 1000-2; Category C, 1000-2¾.  
<sup>2</sup>Category C, 1000-2¾.  
<sup>3</sup>NA when local weather not available.  
<sup>4</sup>Category B, 100-2; Category C, 1000-2¾.

**MIDDLETON, WI**

MIDDLETON MUNI - MOREY FIELD (C29).....RNAV (GPS) Rwy 10  
NA when local weather not available.

**MERRILL, WI**

MERRILL MUNI (RRL).....RNAV (GPS) Rwy 7  
RNAV (GPS) Rwy 25  
NA when local weather not available.

**MILWAUKEE, WI**

LAWRENCE J TIMMERMAN (MWC).....RNAV (GPS) Rwy 4L  
RNAV (GPS) Rwy 15L  
RNAV (GPS) Rwy 22R  
NA when local weather not available.

**MINERAL POINT, WI**

IOWA COUNTY (MRJ).....RNAV (GPS) Rwy 4  
RNAV (GPS) Rwy 11  
RNAV (GPS) Rwy 22  
RNAV (GPS) Rwy 29  
NA when local weather not available.

**MINOCQUA-WOODRUFF, WI**

LAKELAND/NOBLE F LEE MEMORIAL FIELD (ARV).....RNAV (GPS) Rwy 18  
RNAV (GPS) Rwy 28  
RNAV (GPS) Rwy 36  
NA when local weather not available.

**MOLINE, IL**

QUAD CITY INTL (MLI).....ILS or LOC Rwy 9<sup>12</sup>  
ILS or LOC Rwy 27<sup>12</sup>  
RNAV (GPS) Rwy 9  
RNAV (GPS) Rwy 13  
RNAV (GPS) Rwy 27  
RNAV (GPS) Rwy 31

NA when local weather not available.  
<sup>1</sup>NA when control tower closed.  
<sup>2</sup>ILS, Category D, 700-2.

NAME ALTERNATE MINIMUMS

**MONROE, WI**

MONROE MUNI (EFT).....RNAV (GPS) Rwy 12  
RNAV (GPS) Rwy 30  
VOR/DME Rwy 30  
NA when local weather not available.

**MORRIS, IL**

MORRIS MUNI-JAMES R WASHBURN FIELD (C09).....RNAV (GPS) Rwy 18  
RNAV (GPS) Rwy 36  
NA when local weather not available.

**MOSINEE, WI**

CENTRAL WISCONSIN (CWA).....ILS or LOC Rwy 8<sup>1</sup>  
ILS or LOC Rwy 35<sup>1</sup>  
RNAV (GPS) Rwy 17<sup>2</sup>

<sup>1</sup>NA when control tower closed.  
<sup>2</sup>NA when local weather not available.

**MOUNT VERNON, IL**

MOUNT VERNON (MVN).....ILS OR LOC Rwy 23<sup>1</sup>  
RNAV (GPS) Rwy 5  
RNAV (GPS) Rwy 23  
NA when local weather not available.  
<sup>1</sup>LOC, Category D, 900-3.

**NEW RICHMOND, WI**

NEW RICHMOND RGNL (RNH).....RNAV (GPS) Rwy 14  
RNAV (GPS) Rwy 32  
NA when local weather not available.

**OLNEY-NOBLE, IL**

OLNEY-NOBLE (OLY).....NDB Rwy 4  
RNAV (GPS) Rwy 4  
RNAV (GPS) Rwy 11  
NA when local weather not available.  
Category D, 800-2¾.

**OSCEOLA, WI**

L O SIMENSTAD MUNI (OEO).....RNAV (GPS) Rwy 10  
RNAV (GPS) Rwy 28  
NA when local weather not available.

03 DEC 2020 to 31 DEC 2020

03 DEC 2020 to 31 DEC 2020

20310

M6



20310

**NAME ALTERNATE MINIMUMS****OSHKOSH, WI**

WITTMAN  
 RGNL (OSH).....**ILS or LOC Rwy 36<sup>13</sup>**  
**LOC/DME BC Rwy 18<sup>1</sup>**  
**RNAV (GPS) Rwy 9**  
**RNAV (GPS) Rwy 18**  
**RNAV (GPS) Rwy 27**  
**RNAV (GPS) RWY 36**  
**VO Rwy 9**  
**VO Rwy 18<sup>2</sup>**  
**VO Rwy 27**  
**VO Rwy 36**

NA when local weather not available.

<sup>1</sup>NA when control tower closed.<sup>2</sup>Category D, 800-2¼.<sup>3</sup>ILS, Category D, 700-2.**PARIS, IL**

EDGAR COUNTY (PRG).....**VO R/DME-A**  
 NA when local weather not available.

**PEORIA, IL**

GENERAL DOWNING-  
 PEORIA INTL (PIA).....**ILS or LOC Rwy 4<sup>13</sup>**  
**ILS or LOC Rwy 13<sup>23</sup>**  
**ILS or LOC Rwy 31<sup>23</sup>**  
**NDB Rwy 31<sup>24</sup>**  
**RNAV (GPS) Rwy 4<sup>24</sup>**  
**RNAV (GPS) Rwy 13<sup>24</sup>**  
**RNAV (GPS) Rwy 22<sup>24</sup>**  
**RNAV (GPS) Rwy 31<sup>24</sup>**  
**VO R/DME or TACAN Rwy 31<sup>2</sup>**

<sup>1</sup>NA when control tower closed.<sup>2</sup>NA when local weather not available.<sup>3</sup>ILS, LOC, Category D, 800-2¼.<sup>4</sup>Category D, 800-2¼.**PERU, IL**

ILLINOIS VALLEY RGNL-WALTER A.  
 DUNCAN FIELD (VYS).....**RNAV (GPS) Rwy 18**  
**RNAV (GPS) Rwy 36**  
 NA when local weather not available.  
 Category D, 900-2½.

**PHILLIPS, WI**

PRICE COUNTY (PBH).....**RNAV (GPS) Rwy 1<sup>1</sup>**  
**RNAV (GPS) Rwy 6<sup>1</sup>**  
**RNAV (GPS) Rwy 19**  
**RNAV (GPS) Rwy 24**

NA when local weather not available.

<sup>1</sup>Category D, 800-2½.**PLATTEVILLE, WI**

PLATTEVILLE  
 MUNI (PVB).....**RNAV (GPS) Rwy 15**  
**RNAV (GPS) Rwy 33**  
 NA when local weather not available.

**NAME ALTERNATE MINIMUMS****PONTIAC, IL**

PONTIAC MUNI (PNT).....**RNAV (GPS) Rwy 6**  
**RNAV (GPS) Rwy 24**  
**VO Rwy 24**

NA when local weather not available.

**PRAIRIE DU CHIEN, WI**

PRAIRIE DU  
 CHIEN MUNI (PDC).....**RNAV (GPS) Rwy 14**  
**RNAV (GPS) Rwy 29**  
**RNAV (GPS) Rwy 32**

Categories A, B, 1000-2; Categories C, D, 1200-3.

**QUINCY, IL**

QUINCY RGNL-  
 BALDWIN FIELD (UIN).....**RNAV (GPS) Rwy 4**  
**RNAV (GPS) Rwy 13**  
**RNAV (GPS) Rwy 18**  
**RNAV (GPS) Rwy 22**  
**RNAV (GPS) Rwy 31**  
**RNAV (GPS) Rwy 36**

NA when local weather not available.

**RACINE, WI**

BATTEN  
 INTL (RAC).....**ILS or LOC Rwy 4<sup>1</sup>**  
**RNAV (GPS) Rwy 4<sup>2</sup>**  
**RNAV (GPS) Rwy 22<sup>2</sup>**  
**RNAV (GPS) Rwy 32<sup>2</sup>**

NA when local weather not available.

<sup>1</sup>LOC, Category D, 800-2¼.<sup>2</sup>Category D, 800-2¼.**RANTOUL, IL**

RANTOUL NATL AVN CNTR-FRANK  
 ELLIOTT FLD (TIP).....**RNAV (GPS) Rwy 9**  
**RNAV (GPS) Rwy 18**  
**RNAV (GPS) Rwy 27**  
**RNAV (GPS) Rwy 36**

NA when local weather not available.

Category D, 800-2¼.

**REEDSBURG, WI**

REEDSBURG MUNI (C35).....**RNAV (GPS) Rwy 36**  
 NA when local weather not available.

**RHINELANDER, WI**

RHINELANDER-ONEIDA  
 COUNTY (RHI).....**RNAV (GPS) Rwy 9**  
**RNAV (GPS) Rwy 15**  
**RNAV (GPS) Rwy 27**  
**RNAV (GPS) Rwy 33**

NA when local weather not available.

20310

M7

03 DEC 2020 to 31 DEC 2020

03 DEC 2020 to 31 DEC 2020

NAME ALTERNATE MINIMUMS

**RICE LAKE, WI**

RICE LAKE RGNL-  
CARL'S FIELD (RPD).....**ILS or LOC Rwy 1<sup>12</sup>**  
**RNAV (GPS) Rwy 1<sup>3</sup>**  
**RNAV (GPS) Rwy 19<sup>4</sup>**

<sup>1</sup>ILS, NA when local weather not available.

<sup>2</sup>LOC, Category D, 900-2½.

<sup>3</sup>NA when local weather not available.

<sup>4</sup>Category D, 900-2½.

**ROBINSON, IL**

CRAWFORD CO (RSV).....**NDB Rwy 17<sup>1</sup>**  
**RNAV (GPS) Rwy 9<sup>1</sup>**  
**RNAV (GPS) Rwy 17**  
**RNAV (GPS) Rwy 27<sup>1</sup>**

NA when local weather not available.

<sup>1</sup>Category D, 800-2½.

**ROCHELLE, IL**

ROCHELLE MUNI AIRPORT-KORITZ  
FIELD (RPJ).....**RNAV (GPS) Rwy 7**  
**RNAV (GPS) Rwy 25**

NA when local weather not available.

Category C, 900-2¾; Category D, 1100-3.

**SALEM, IL**

SALEM-  
LECKRONE (SLO).....**RNAV (GPS) Rwy 18**  
**RNAV (GPS) Rwy 36**

NA when local weather not available.

**SAVANNA, IL**

TRI-TOWNSHIP (SFY).....**RNAV (GPS) Rwy 13**  
NA when local weather not available.

**SHAWANO, WI**

SHAWANO  
MUNI (EZS).....**RNAV (GPS) Rwy 12**  
**RNAV (GPS) Rwy 30**

Category D, 800-2½.

NA when local weather not available.

**SHEBOYGAN, WI**

SHEBOYGAN COUNTY  
MEMORIAL (SBM).....**RNAV (GPS) Rwy 22**  
NA when local weather not available.

**SIREN, WI**

BURNETT  
COUNTY (RZN).....**RNAV (GPS) Rwy 5**  
**RNAV (GPS) Rwy 14**  
**RNAV (GPS) Rwy 23**  
**RNAV (GPS) Rwy 32**

NA when local weather not available

Category D, 800-2½.

**SPARTA, IL**

SPARTA COMMUNITY-  
HUNTER FIELD (SAR).....**RNAV (GPS) Rwy 36**  
NA when local weather not available.

NAME ALTERNATE MINIMUMS

**SPARTA, WI**

SPARTA/  
FORT MCCOY (CMY).....**NDB Rwy 29<sup>1</sup>**  
**RNAV (GPS) Rwy 11<sup>2</sup>**  
**RNAV (GPS) Rwy 29<sup>2</sup>**

NA when local weather not available.

<sup>1</sup>Category C, 800-2½.

<sup>2</sup>Category C, 800-2½, Category D, 800-2½.

**SPRINGFIELD, IL**

ABRAHAM LINCOLN  
CAPITAL (SPI).....**ILS or LOC Rwy 4<sup>12</sup>**  
**ILS or LOC Rwy 22<sup>34</sup>**  
**RADAR-1<sup>45</sup>**  
**RNAV (GPS) Rwy 4<sup>16</sup>**  
**RNAV (GPS) Rwy 13<sup>16</sup>**  
**RNAV (GPS) Rwy 22<sup>16</sup>**  
**RNAV (GPS) Rwy 31<sup>16</sup>**  
**VOR Rwy 4<sup>16</sup>**  
**VOR/DME Rwy 13<sup>16</sup>**  
**VOR/DME Rwy 22<sup>16</sup>**  
**VOR/DME Rwy 31<sup>16</sup>**

<sup>1</sup>NA when local weather not available.

<sup>2</sup>ILS, LOC Category C, 800-2½;

Category D, 800-2½.

<sup>3</sup>LOC, Category C, 800-2½; Category D, 800-2½.

<sup>4</sup>NA when control tower closed.

<sup>5</sup>Category E, 800-2½.

<sup>6</sup>Category C, 800-2½; Category D, 800-2½.

**STERLING/ROCKFALLS, IL**

WHITESIDE COUNTY AIRPORT-JOSEPH H.  
BITTORF FIELD (SQI).....**RNAV (GPS) Rwy 7**  
**RNAV (GPS) Rwy 25**

Category D, 900-2¾.

**STEVENS POINT, WI**

STEVENS POINT  
MUNI (STE).....**RNAV (GPS) Rwy 3**  
**RNAV (GPS) Rwy 12<sup>1</sup>**  
**RNAV (GPS) Rwy 21**  
**RNAV (GPS) Rwy 30<sup>1</sup>**

Category D, 800-2½.

<sup>1</sup>NA when local weather not available.

**STURGEON BAY, WI**

DOOR COUNTY  
CHERRYLAND (SUE).....**RNAV (GPS) Rwy 2**  
**RNAV (GPS) Rwy 10**  
**RNAV (GPS) Rwy 20**  
**RNAV (GPS) Rwy 28**

NA when local weather not available.

**SUPERIOR, WI**

RICHARD I  
BONG (SUW).....**RNAV (GPS) Rwy 4**  
**RNAV (GPS) Rwy 14**  
**RNAV (GPS) Rwy 22**  
**RNAV (GPS) Rwy 32**

NA when local weather not available.

03 DEC 2020 to 31 DEC 2020

03 DEC 2020 to 31 DEC 2020

## NAME ALTERNATE MINIMUMS

**TAYLORVILLE, IL**

TAYLORVILLE  
MUNI (TAZ).....RNAV (GPS) Rwy 18  
RNAV (GPS) Rwy 36

NA when local weather not available.

**TOMAHAWK, WI**

TOMAHAWK  
RGNL (TKV).....RNAV (GPS) Rwy 9  
RNAV (GPS) Rwy 27

NA when local weather not available.

**VANDALIA, IL**

VANDALIA  
MUNI (VLA).....RNAV (GPS) Rwy 18  
RNAV (GPS) Rwy 36

NA when local weather not available.

**VIROQUA, WI**

VIROQUA MUNI (Y51).....RNAV (GPS) Rwy 29  
NA when local weather not available.  
Category B, 900-2; Category C, 900-2½.

**WATERTOWN, WI**

WATERTOWN  
MUNI (RYV).....RNAV (GPS) Rwy 5<sup>1</sup>  
RNAV (GPS) Rwy 11<sup>2</sup>  
RNAV (GPS) Rwy 23<sup>1</sup>  
RNAV (GPS) Rwy 29<sup>1</sup>

NA when local weather not available.

<sup>1</sup>Category D, 900-3.

<sup>2</sup>Categories A, B, 900-2; Category C, 900-2¼;  
Category D, 900-3.

**WAUKESHA, WI**

WAUKESHA  
COUNTY (UES).....ILS or LOC Rwy 10<sup>1</sup>  
RNAV (GPS) Rwy 10<sup>23</sup>  
RNAV (GPS) Rwy 28<sup>23</sup>  
VOR-A<sup>23</sup>

<sup>1</sup>NA when control tower closed.

<sup>2</sup>NA when local weather not available.

<sup>3</sup>Category D, 800-2¼.

**WAUPACA, WI**

WAUPACA  
MUNI (PCZ).....RNAV (GPS) Rwy 10  
NA when local weather not available.

**WAUSAU, WI**

WAUSAU  
DOWNTOWN (AUW).....RNAV (GPS) Rwy 13<sup>1</sup>  
RNAV (GPS) Rwy 31<sup>2</sup>

<sup>1</sup>Category C, 800-2¼; Category D, 1100-3.

<sup>2</sup>Category D, 1100-3.

## NAME ALTERNATE MINIMUMS

**WAUTOMA, WI**

WAUTOMA MUNI (Y50).....RNAV (GPS) Rwy 13  
RNAV (GPS) Rwy 31

NA when local weather not available.

**WEST BEND, WI**

WEST BEND  
MUNI (ETB).....RNAV (GPS) Rwy 6  
RNAV (GPS) Rwy 13  
RNAV (GPS) Rwy 24  
RNAV (GPS) Rwy 31  
VOR Rwy 24

NA when local weather not available.

**WISCONSIN RAPIDS, WI**

ALEXANDER FIELD SOUTH WOOD  
COUNTY (ISW).....RNAV (GPS) Rwy 2<sup>1</sup>  
RNAV (GPS) Rwy 20

Category D, 800-2½.

<sup>1</sup>NA when local weather not available.