

WAAS CH 77731 W02A	APP CRS 018°	Rwy Idg TDZE Apt Elev	5500 1018 1021
--	------------------------	-----------------------------	---

RNAV (GPS) RWY 2

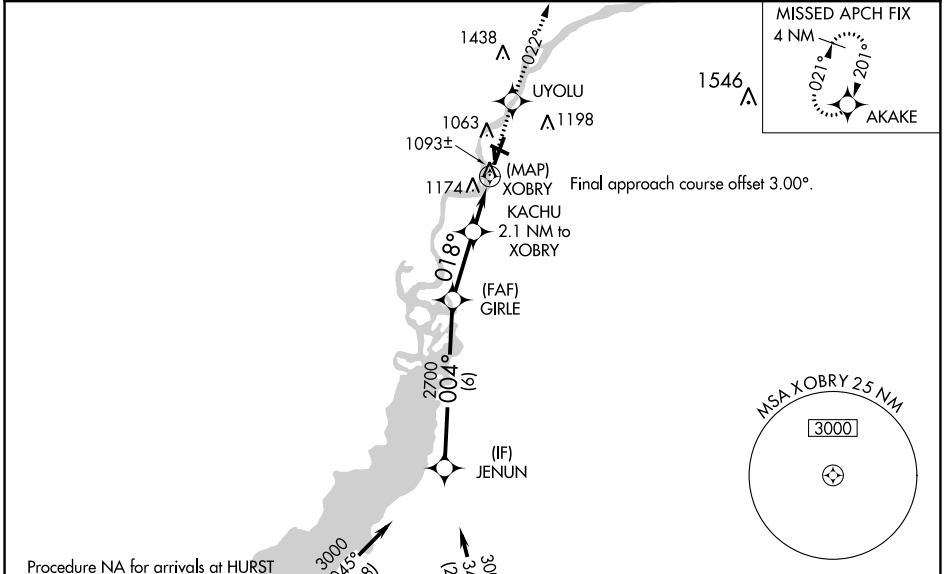
ALEXANDER FIELD SOUTH WOOD COUNTY (ISW)

RNP APCH.

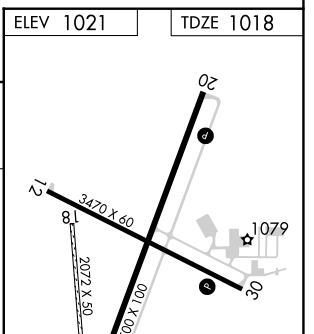
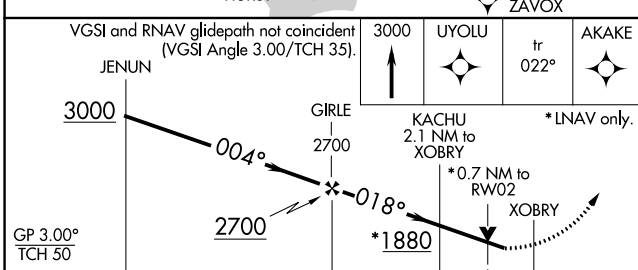
⚠ Circling NA to Rwys 18 and 36. Circling Rwy 20, 30 NA at night. Baro-VNAV and VDP NA when using Stevens Point altimeter setting. Rwy 2 helicopter visibility reduction below $\frac{3}{4}$ SM NA. For uncompensated Baro-VNAV systems, LNAV/VNAV NA below -17°C or above 54°C. When local altimeter setting not received, use Stevens Point altimeter setting; increase LPV DA to 1351 feet; increase LNAV/VNAV DA to 1546 feet and all visibilities $\frac{1}{8}$ SM; increase all MDAs 60 feet, LNAV Cat C and D visibilities $\frac{1}{8}$ SM and Circling Cat C and D visibilities $\frac{1}{4}$ SM.

MISSED APPROACH:
Climb to 3000 direct UYOLU and on track 022° to AKAKE and hold.

ASOS 126.575	MINNEAPOLIS CENTER 124.4 317.7	UNICOM 122.8 (CTAF) 0
------------------------	--	---------------------------------



ELEV 1021	TDZE 1018
-----------	-----------



CATEGORY	A	B	C	D
LPV DA		1298-1	280 (300-1)	
LNAV/VNAV DA		1493-1 $\frac{3}{8}$	475 (500-1 $\frac{3}{8}$)	
LNAV MDA	1440-1	422 (500-1)	1440-1 $\frac{1}{4}$	422 (500-1 $\frac{1}{4}$)
C CIRCLING	1480-1 459 (500-1)	1560-1 539 (600-1)	1620-1 $\frac{1}{2}$ 599 (600-1 $\frac{1}{2}$)	1800-2 $\frac{1}{2}$ 779 (800-2 $\frac{1}{2}$)

REIL Rwys 2 and 20 **0**

MRL Rwys 2-20 and 12-30 **0**

EC-3, 03 DEC 2020 to 31 DEC 2020

EC-3, 03 DEC 2020 to 31 DEC 2020

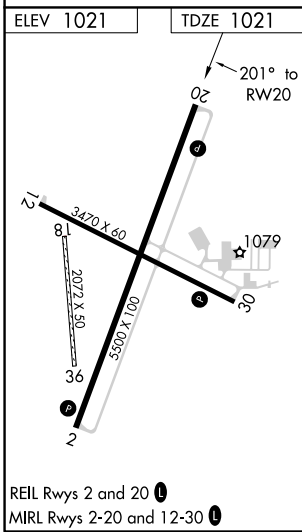
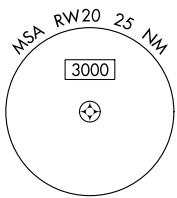
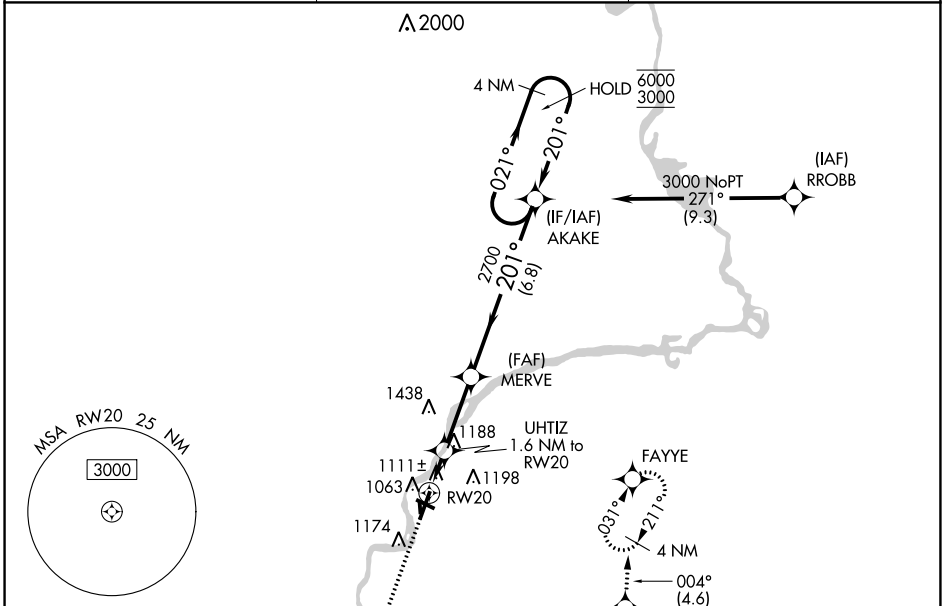
APP CRS	Rwy Idg	5500
201°	TDZE	1021
	Apt Elev	1021

RNAV (GPS) RWY 20

ALEXANDER FIELD SOUTH WOOD COUNTY (ISW)

RNP APCH.	MISSED APPROACH: Climb to 3000 direct WEMUG and on track 117° to OCEDE and on track 049° to LHALL and on track 004° to FAYYE and hold.
<p>▼ Circling NA to Rws 18 and 36.</p> <p>▲ Rwy 20 helicopter visibility reduction below 1 SM NA.</p> <p>▲ Straight-in Rwy 20 NA at night, Circling Rwy 20, 30 NA at night.</p>	

ASOS 126.575	MINNEAPOLIS CENTER 124.4 317.7	UNICOM 122.8 (CTAF)
------------------------	--	-------------------------------



3000	WEMUG	tr 117°	OCEDE	tr 049°	LHALL	tr 004°	FAYYE	4 NM Holding Pattern
	UHTIZ	MERVE	AKAKE					
	1.6 NM to RW20							
	≤ 3.50° TCH 42							
	1640	2700						
	1.6 NM	2.8 NM	6.8 NM					
CATEGORY	A	B	C	D				
LNAV MDA	1380-1		359 (400-1)					
CIRCLING	1480-1 459 (500-1)	1560-1 539 (600-1)	1620-1½ 599 (600-1½)	1800-2½ 779 (800-2½)				

EC-3, 03 DEC 2020 to 31 DEC 2020

EC-3, 03 DEC 2020 to 31 DEC 2020