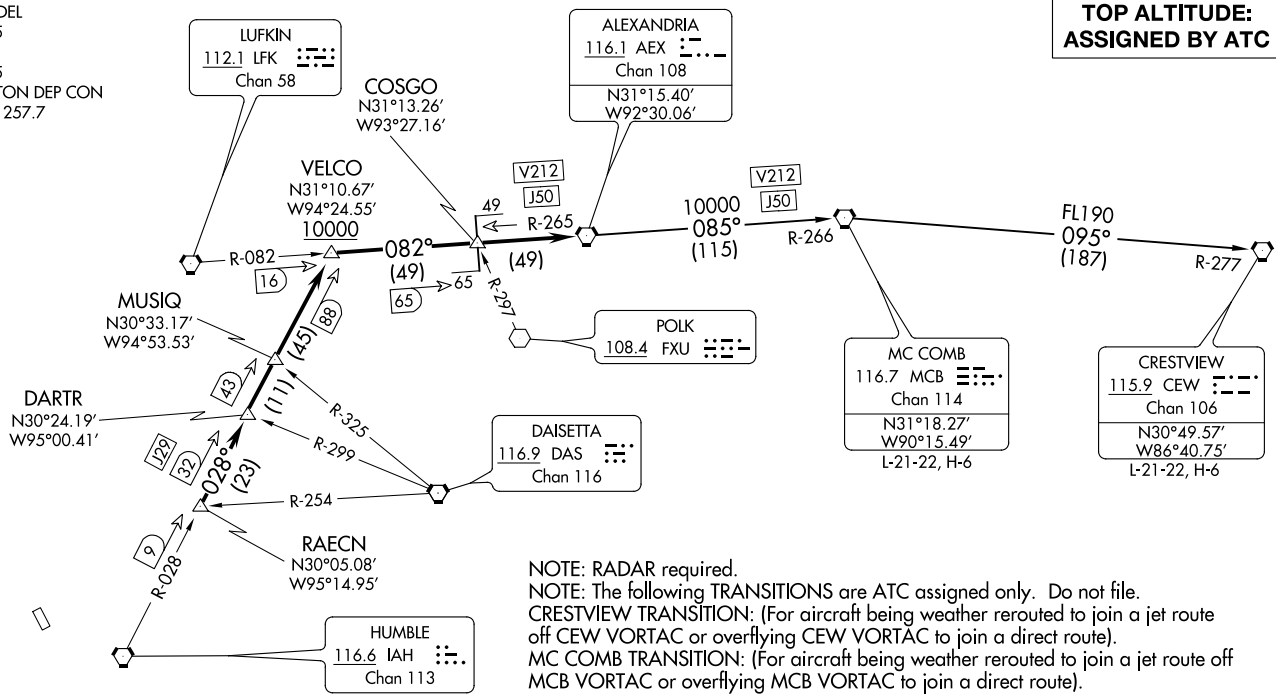


ALEXANDRIA THREE DEPARTURE
(AEX3.AEX) 070CT21
HOUSTON, TEXAS
WEST HOUSTON (IWS)

CLNC DEL
121.15
CTAF
123.05
HOUSTON DEP CON
123.8 257.7



**TOP ALTITUDE:
ASSIGNED BY ATC**

TAKEOFF MINIMUMS
Rwys 15, 33: Standard.

NOTE: RADAR required.
NOTE: The following TRANSITIONS are ATC assigned only. Do not file.
CRESTVIEW TRANSITION: (For aircraft being weather rerouted to join a jet route off CEW VORTAC or overflying CEW VORTAC to join a direct route).
MC COMB TRANSITION: (For aircraft being weather rerouted to join a jet route off MCB VORTAC or overflying MCB VORTAC to join a direct route).

(NARRATIVE ON FOLLOWING PAGE)

NOTE: Chart not to scale.

(AEX3.AEX) 21280
ALEXANDRIA THREE DEPARTURE
A-4079 (FAA)
WEST HOUSTON (IWS)
HOUSTON, TEXAS

ALEXANDRIA THREE DEPARTURE



DEPARTURE ROUTE DESCRIPTION

TAKEOFF ALL RUNWAYS: When entering controlled airspace, climb on assigned heading for RADAR vectors to RAECN INT. Maintain ATC assigned altitude. Expect filed altitude 10 minutes after departure, thence. . . .

. . . .on IAH R-028 to VELCO INT, cross VELCO INT at or above 10000, then right turn on LFK R-082 and AEX R-265 to AEX VORTAC.

CRESTVIEW TRANSITION (AEX3.CEW): From over AEX VORTAC on AEX R-085 and MCB R-266 to MCB VORTAC, then on MCB R-095 and CEW R-277 to CEW VORTAC.

MC COMB TRANSITION (AEX3.MCB): From over AEX VORTAC on AEX R-085 and MCB R-266 to MCB VORTAC.

SC-5, 22 FEB 2024 to 21 MAR 2024

SC-5, 22 FEB 2024 to 21 MAR 2024

(BLTWY7.BLTWY) 21280

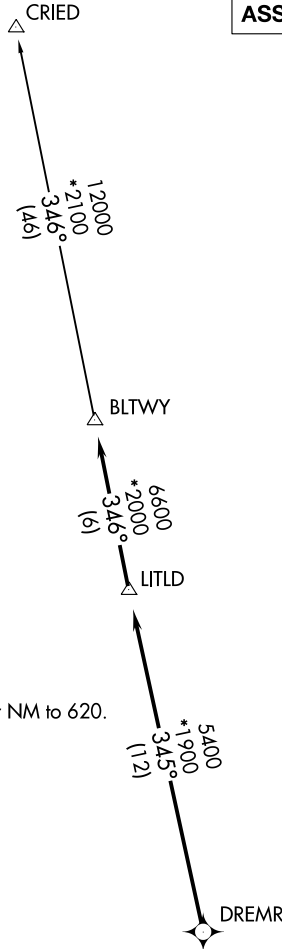
AL-6079 (FAA)

WEST HOUSTON (IWS)
HOUSTON, TEXAS

BLTWY SEVEN DEPARTURE (RNAV)

**TOP ALTITUDE:
ASSIGNED BY ATC**

CINC DEL
121.15
CTAF
123.05
HOUSTON DEP CON
123.8 257.7



NOTE: RADAR required.
NOTE: DME/DME/IRU or GPS required.
NOTE: RNAV 1.

TAKEOFF MINIMUMS

Rwy 15, 33: Standard with minimum climb of 500' per NM to 620.

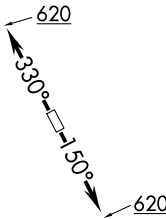
▼ DEPARTURE ROUTE DESCRIPTION

TAKEOFF RUNWAY 15: Climb on heading 150° to 620 for RADAR vectors to DREMR, thence

TAKEOFF RUNWAY 33: Climb on heading 330° to 620 for RADAR vectors to DREMR, thence

...on track 345° to LITLD, then on track 346° to BLTWY, then on (transition). Maintain ATC assigned altitude. Expect filed altitude 10 minutes after departure.

CRIED TRANSITION (BLTWY7.CRIED)



NOTE: Chart not to scale.

BLTWY SEVEN DEPARTURE (RNAV)
(BLTWY7.BLTWY) 07OCT21

HOUSTON, TEXAS
WEST HOUSTON (IWS)

SC-5, 22 FEB 2024 to 21 MAR 2024

SC-5, 22 FEB 2024 to 21 MAR 2024

RNAV 1 - DME/DME/IRU or GPS.

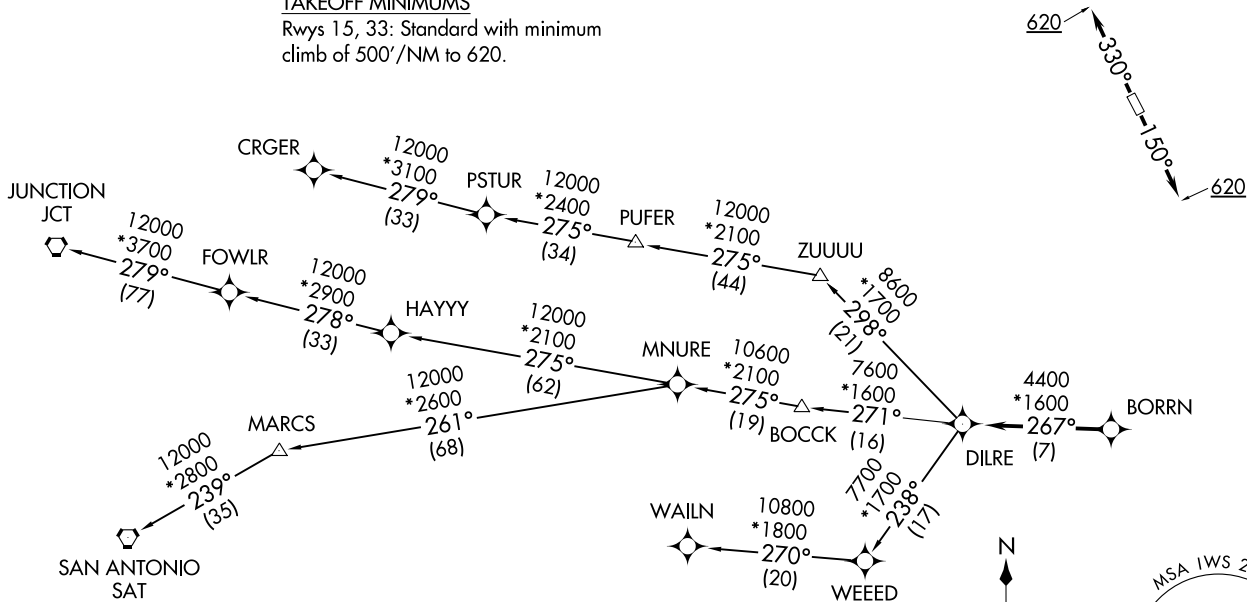
RADAR required.

**TOP ALTITUDE:
ASSIGNED BY ATC**

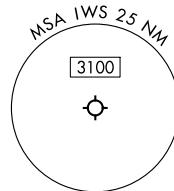
CTAF
123.05
CLNC DEL
121.15
HOUSTON DEP CON
123.8 257.7

TAKEOFF MINIMUMS

Rwys 15, 33: Standard with minimum
climb of 500'/NM to 620.



NOTE: CRGER-TRANSITION ATC assigned only
for aircraft departing 54T, AXH, EFD, GLS,
HPY, IWS, LBX, LVJ, SGR, TME, T00, T41.



NOTE: Chart not to scale.

(NARRATIVE ON FOLLOWING PAGE)

BORRN SIX DEPARTURE (RNAV)
(BORRN6.BORRN) 30NOV23

HOUSTON, TEXAS
WEST HOUSTON (IWS)

(BORRN6.BORRN) 23334
BORRN SIX DEPARTURE (RNAV)

AL-6079 (FAA)

WEST HOUSTON (IWS)
HOUSTON, TEXAS

BORRN SIX DEPARTURE (RNAV)



DEPARTURE ROUTE DESCRIPTION

TAKEOFF RUNWAY 15: Climb heading 150° to 620, for RADAR vectors to BORRN, thence. . . .

TAKEOFF RUNWAY 33: Climb heading 330° to 620, for RADAR vectors to BORRN, thence. . . .

. . . .on track 267° to DILRE, then on (transition). Maintain ATC assigned altitude. Expect filed altitude 10 minutes after departure.

CRGER TRANSITION (BORRN6.CRGER)

JUNCTION TRANSITION (BORRN6.JCT)

MNURE TRANSITION (BORRN6.MNURE)

SAN ANTONIO TRANSITION (BORRN6.SAT)

WAILN TRANSITION (BORRN6.WAILN)

SC-5, 22 FEB 2024 to 21 MAR 2024

SC-5, 22 FEB 2024 to 21 MAR 2024

CRIED ONE DEPARTURE

AL-6079 (FAA)

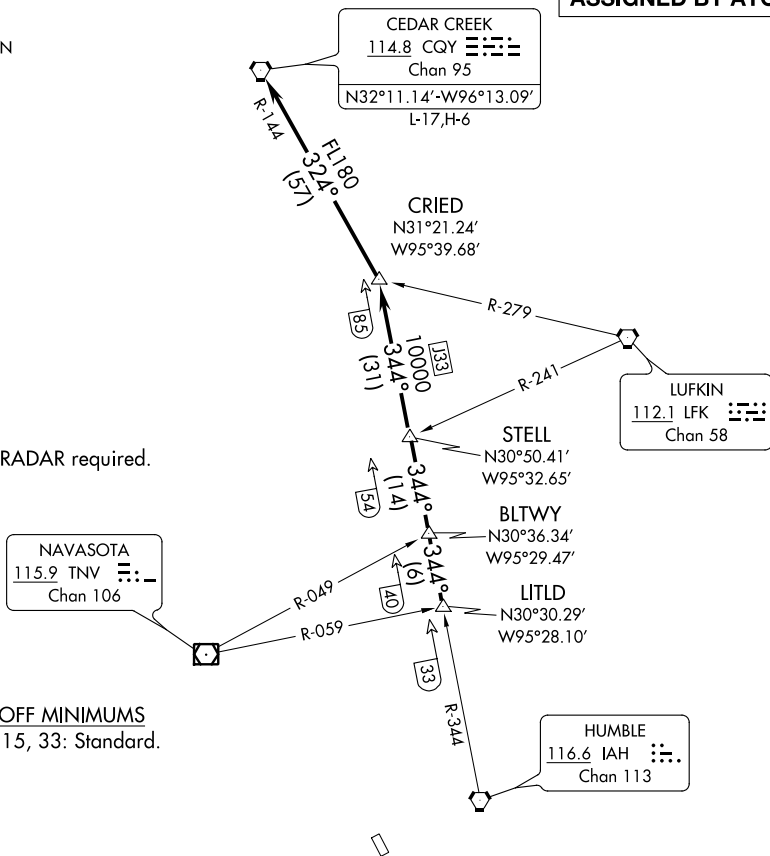
WEST HOUSTON (IWS)
HOUSTON, TEXAS

CLNC DEL
121.15
CTAF
123.05
HOUSTON DEP CON
123.8 257.7

**TOP ALTITUDE:
ASSIGNED BY ATC**

NOTE: RADAR required.

TAKEOFF MINIMUMS
Rwys 15, 33: Standard.



NOTE: Chart not to scale.

DEPARTURE ROUTE DESCRIPTION

TAKEOFF ALL RUNWAYS: When entering controlled airspace, climb on assigned heading for RADAR vectors to LITLD INT. Maintain ATC assigned altitude. Expect filed altitude 10 minutes after departure, thence

. . . . on IAH R-344 to STELL INT, then on IAH R-344 to CRIED INT, then left turn on CQY R-144 to CQY VORTAC.

EL DORADO ONE DEPARTURE

CLNC DEL
121.15
CTAF
123.05
HOUSTON DEP CON
123.8 257.7

**TOP ALTITUDE:
ASSIGNED BY ATC**

EL DORADO
115.5 ELD
Chan 102
N33°15.37'-W92°44.64'
L-17, H-6

NOTE: RADAR required.
NOTE: For aircraft destined KMEM
or filed via Q32 or J42.

LUFKIN
112.1 LFK
Chan 58

MUSIQ
N30°33.17'
W94°53.53'

DARTR
N30°24.19'
W95°00.41'

RAECN
N30°05.08'
W95°14.95'

ENJOY
N31°16.73'
W94°19.82'

VELCO
N31°10.67'
W94°24.55'
10000

DAISETTA
116.9 DAS
Chan 116

HUMBLE
116.6 IAH
Chan 113

TAKEOFF MINIMUMS
Rwys 15, 33: Standard.

NOTE: Chart not to scale.

DEPARTURE ROUTE DESCRIPTION

TAKEOFF ALL RUNWAYS: When entering controlled airspace, climb on assigned heading for RADAR vectors to RAECN INT. Maintain ATC assigned altitude. Expect filed altitude 10 minutes after departure, thence. . . .

. . . . on IAH R-028 and the ELD R-208 to ELD VOR/DME, cross VELCO INT at or above 10000.

SC-5, 22 FEB 2024 to 21 MAR 2024

SC-5, 22 FEB 2024 to 21 MAR 2024

CLNC DEL
121.15
CTAF
123.05
HOUSTON DEP CON
123.8 257.7

CEDAR CREEK
114.8 CQY
Chan 95

**TOP ALTITUDE:
ASSIGNED BY ATC**

NOTE: RADAR required.
NOTE: For aircraft destined for the DFW
terminal area only.

LEONA
110.8 LOA
Chan 45

GIFFA
N31°22.89'
W95°15.10'
L-19-21, H-6
10000

(85)

R-121

R-059

R-128

358°
(44)

BUMCO
N30°38.91'
W95°18.03'

358°
(110)

MONNT
N30°28.65'
W95°18.70'
L19-21, H7

(41)

DAISETTA
116.9 DAS
Chan 116

R-358

R-292

(31)

HUMBLE
116.6 IAH
Chan 113

TAKEOFF MINIMUMS
Rwys 15, 33: Standard

NOTE: Chart not to scale.

DEPARTURE ROUTE DESCRIPTION

TAKEOFF ALL RUNWAYS: When entering controlled airspace, climb on assigned heading for RADAR vectors to MONNT INT. Maintain ATC assigned altitude. Expect filed altitude 10 minutes after departure, thence. . . .
. . . . on IAH R-358 to cross GIFFA INT at or above 10000.

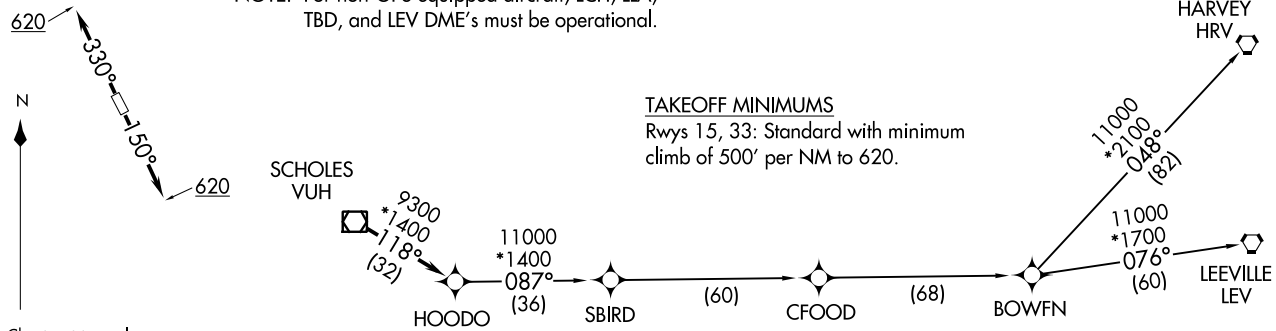
**TOP ALTITUDE:
ASSIGNED BY ATC**

HOODO SEVEN DEPARTURE (RNAV)
(HOODO7.HOODO) 07OCT21

(HOODO7.HOODO) 21280
HOODO SEVEN DEPARTURE (RNAV)
AL-6079 (FAA)

CLINC DEL
121.15
CTAF
123.05
HOUSTON DEP CON
123.8 257.7

NOTE: RNAV 1.
NOTE: RADAR required.
NOTE: ATC assigned only.
NOTE: DME/DME/IRU or GPS required.
NOTE: For non-GPS equipped aircraft, LCH, LLA,
TBD, and LEV DME's must be operational.



TAKEOFF MINIMUMS
Rwys 15, 33: Standard with minimum
climb of 500' per NM to 620.

NOTE: Chart not to scale.

DEPARTURE ROUTE DESCRIPTION

TAKEOFF RUNWAY 15: Climb on heading 150° to 620, for RADAR vectors to VUH VOR/DME, thence
TAKEOFF RUNWAY 33: Climb on heading 330° to 620, for RADAR vectors to VUH VOR/DME, thence

. . . . on track 118° to HOODO, then on (transition). Maintain ATC assigned altitude.
Expect filed altitude 10 minutes after departure.

- BOWFN TRANSITION (HOODO7.BOWFN)
- CFOOD TRANSITION (HOODO7.CFOOD)
- HARVEY TRANSITION (HOODO7.HRV)
- LEEVILLE TRANSITION (HOODO7.LEV)
- SBIRD TRANSITION (HOODO7.SBIRD)

HOUSTON, TEXAS
WEST HOUSTON (TWS)

WEST HOUSTON (TWS)
HOUSTON, TEXAS

(INDIE8.INDIE) 21280

AL-6079 (FAA)

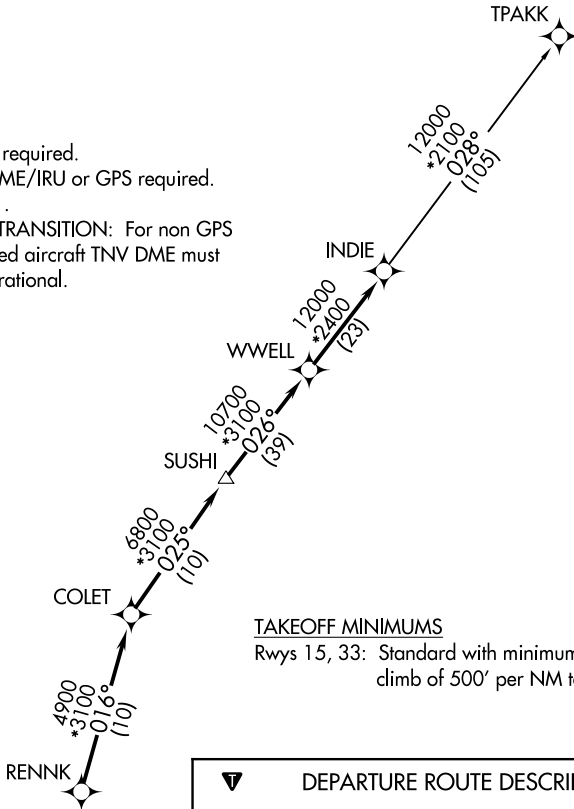
WEST HOUSTON (IWS)
HOUSTON, TEXAS

INDIE EIGHT DEPARTURE (RNAV)

CLNC DEL
121.15
CTAF
123.05
HOUSTON DEP CON
123.8 257.7

**TOP ALTITUDE:
ASSIGNED BY ATC**

- NOTE: RADAR required.
- NOTE: DME/DME/IRU or GPS required.
- NOTE: RNAV 1.
- NOTE: TPAKK TRANSITION: For non GPS equipped aircraft TNV DME must be operational.



TAKEOFF MINIMUMS

Rwys 15, 33: Standard with minimum climb of 500' per NM to 620.



DEPARTURE ROUTE DESCRIPTION

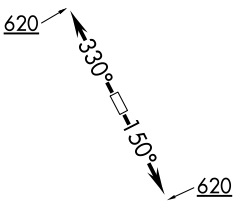
TAKEOFF RUNWAY 15: Climb on heading 150° to 620 for RADAR vectors to RENNK, then

TAKEOFF RUNWAY 33: Climb on heading 330° to 620 for RADAR vectors to RENNK, then

. . . . on track 016° to COLET, then on track 025° to SUSHI, then on track 026° to WWELL, then on track 026° to INDIE, then on (transition).

Maintain ATC assigned altitude. Expect filed altitude 10 minutes after departure.

TPAKK TRANSITION (INDIE8.TPAKK)



NOTE: Chart not to scale.

SC-5, 22 FEB 2024 to 21 MAR 2024

SC-5, 22 FEB 2024 to 21 MAR 2024

INDIE EIGHT DEPARTURE (RNAV)
(INDIE8.INDIE) 07OCT21

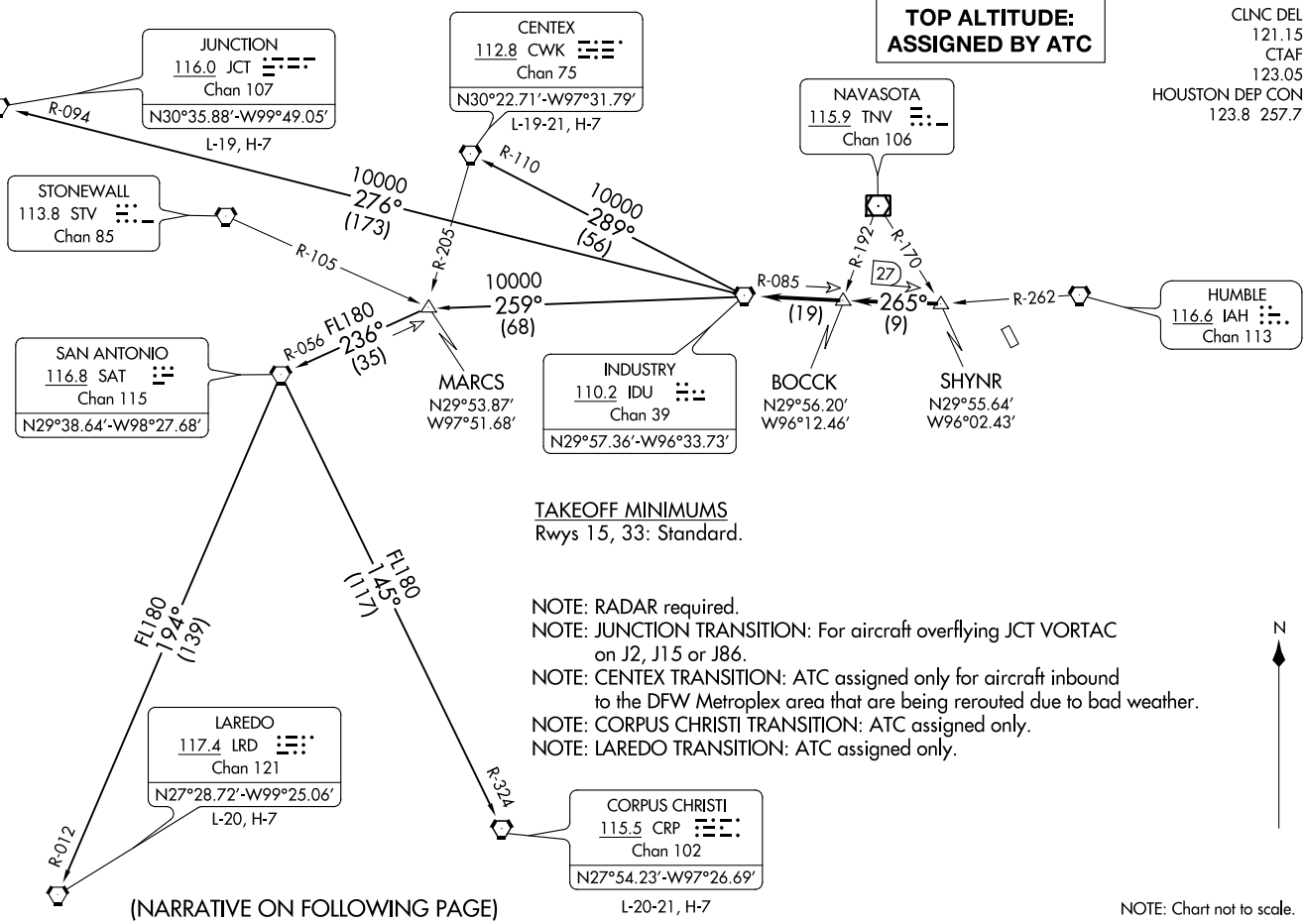
HOUSTON, TEXAS
WEST HOUSTON (IWS)

INDUSTRY ONE DEPARTURE
(IDU1, IDU) 07OCT21

INDUSTRY ONE DEPARTURE
(IDU1, IDU) 21280

CINC DEL 121.15
CTAF 123.05
HOUSTON DEP CON 123.8 257.7

**TOP ALTITUDE:
ASSIGNED BY ATC**



(NARRATIVE ON FOLLOWING PAGE)

NOTE: Chart not to scale.

AL-6079 (FAA)

WEST HOUSTON (TWS)
HOUSTON, TEXAS

HOUSTON, TEXAS
WEST HOUSTON (TWS)



DEPARTURE ROUTE DESCRIPTION

TAKEOFF ALL RUNWAYS: When entering controlled airspace, climb on assigned heading for RADAR vectors to SHYNR INT. Maintain ATC assigned altitude. Expect filed altitude 10 minutes after departure, thence

. . . . on IDU R-085 to BOCCK INT, then on IDU R-085 to IDU VORTAC.

CENTEX TRANSITION (IDU1.CWK): From over IDU VORTAC on IDU R-289 and CWK R-110 to CWK VORTAC.

CORPUS CHRISTI TRANSITION (IDU1.CRP): From over IDU VORTAC on IDU R-259 to MARCS INT, then on SAT R-056 to SAT VORTAC, then on SAT R-145 and CRP R-324 to CRP VORTAC.

JUNCTION TRANSITION (IDU1.JCT): From over IDU VORTAC on IDU R-276 and JCT R-094 to JCT VORTAC.

LAREDO TRANSITION (IDU1.LRD): From over IDU VORTAC on IDU R-259 to MARCS INT, then on SAT R-056 to SAT VORTAC, then on SAT R-194 and LRD R-012 to LRD VORTAC.

SC-5, 22 FEB 2024 to 21 MAR 2024

SC-5, 22 FEB 2024 to 21 MAR 2024

RNAV-1 DME/DME/IRU or GPS.

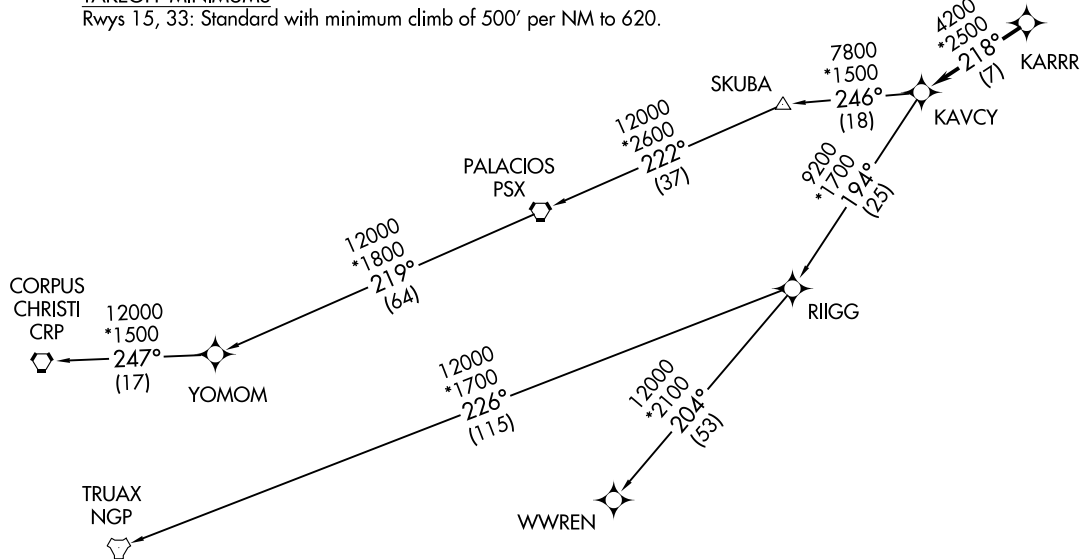
RADAR required.

TOP ALTITUDE:
ASSIGNED BY ATC

CTAF
123.05
CLNC DEL
121.15
HOUSTON DEP CON
123.8 257.7

TAKEOFF MINIMUMS

Rwys 15, 33: Standard with minimum climb of 500' per NM to 620.



(NARRATIVE ON FOLLOWING PAGE)

NOTE: Chart not to scale.

KARRR SEVEN DEPARTURE (RNAV)
(KARRR7.KARRR) 29DEC22

HOUSTON, TEXAS
WEST HOUSTON (IWS)

(KARRR7.KARRR) 22363
KARRR SEVEN DEPARTURE (RNAV)

AL-6079 (FAA)

WEST HOUSTON (IWS)
HOUSTON, TEXAS

KARRR SEVEN DEPARTURE(RNAV)



DEPARTURE ROUTE DESCRIPTION

TAKEOFF RUNWAY 15: Climb on heading 150° to 620, for RADAR vectors to KARRR, thence. . . .

TAKEOFF RUNWAY 33: Climb on heading 330° to 620, for RADAR vectors to KARRR, thence. . . .

. . . .on track 218° to KAVCY, then on (transition). Maintain ATC assigned altitude. Expect filed altitude 10 minutes after departure.

CORPUS CHRISTI TRANSITION (KARRR7.CRP)

PALACIOS TRANSITION (KARRR7.PSX)

TRUAX TRANSITION (KARRR7.NGP)

WWREN TRANSITION (KARRR7.WWREN)

YOMOM TRANSITION (KARRR7.YOMOM)

SC-5, 22 FEB 2024 to 21 MAR 2024

SC-5, 22 FEB 2024 to 21 MAR 2024

LEONA FOUR DEPARTURE

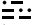
AL-6079 (FAA)

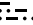
WEST HOUSTON (IWS)


HOUSTON, TEXAS

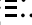
TOP ALTITUDE: ASSIGNED BY ATC


CLNC DEL
121.15
CTAF
123.05
HOUSTON DEP CON
123.8 257.7


ARDMORE
116.7 ADM 
Chan 114
N34°12.69' - W97°10.10'
L-17, H-6


TULSA
114.4 TUL 
Chan 91
N36°11.78' - W95°47.29'

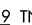
BONHAM
114.6 BYP 
Chan 93
N33°32.25' - W96°14.05'
L-17, H-6

RANGER
115.7 FUZ 
Chan 104
N32°53.37' - W97°10.77'
L-17, H-6

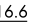
CEDAR CREEK
114.8 CQY 
Chan 95
N32°11.14' - W96°13.09'

WACO
115.3 ACT 
Chan 100
N31°39.74' - W97°16.14'

LEONA
110.8 LOA 
Chan 45
N31°07.44' - W95°58.08'

NAVASOTA
115.9 TNV 
Chan 106

WLLIS
N30°32.08'
W95°39.10'

HUMBLE
116.6 IAH 
Chan 113

TAKEOFF MINIMUMS
Rwys 15, 33: Standard

NOTE: RADAR required.

NOTE: Except for aircraft destined ACT or the DFW terminal area, all aircraft filing the LEONA SID must file one of the published transitions via FUZ (LOA4.FUZ), ADM (LOA4.ADM), or BYP (LOA4.BYP).

NOTE: RANGER TRANSITION: For aircraft overflying west/northwest of the DFW terminal area FL240 and above.

NOTE: ARDMORE TRANSITION: For aircraft overflying north/northwest of the DFW terminal area FL240 and above.

NOTE: BONHAM TRANSITION: For aircraft overflying/landing TUL VORTAC FL240 and above.

NOTE: Chart not to scale.

(NARRATIVE ON FOLLOWING PAGE)

LEONA FOUR DEPARTURE

(LOA4.LOA) 07OCT21

HOUSTON, TEXAS

WEST HOUSTON (IWS)

SC-5, 22 FEB 2024 to 21 MAR 2024

SC-5, 22 FEB 2024 to 21 MAR 2024



DEPARTURE ROUTE DESCRIPTION

TAKEOFF ALL RUNWAYS: When entering controlled airspace, climb on assigned heading for RADAR vectors to WLLIS INT. Maintain ATC assigned altitude. Expect filed altitude 10 minutes after departure, thence

. . . . on LOA R-147 to LOA VORTAC.

ARDMORE TRANSITION (LOA4.ADM): From over LOA VORTAC on LOA R-334 to DOLEY INT, then on ADM R-156 to ADM VORTAC.

BONHAM TRANSITION (LOA4.BYP): From over LOA VORTAC on LOA R-341 and CQY R-163 to CQY VORTAC, then on BYP R-173 to BYP VORTAC.

RANGER TRANSITION (LOA4.FUZ): From over LOA VORTAC on LOA R-334 to DOLEY INT, then on FUZ R-130 to FUZ VORTAC.

SC-5, 22 FEB 2024 to 21 MAR 2024

SC-5, 22 FEB 2024 to 21 MAR 2024

LUFKIN THREE DEPARTURE

CLNC DEL
121.15
CTAF
123.05
HOUSTON DEP CON
123.8 257.7

**TOP ALTITUDE:
ASSIGNED BY ATC**

LITTLE ROCK
113.9 LIT
Chan 86
N34°40.66'
W92°10.83'
L-18, H-6

NOTE: RADAR and DME required.
NOTE: For aircraft destined LIT or
overflying LIT or PXV.

LUFKIN
112.1 LFK
Chan 58
N31°09.75'
W94°43.01'

SUSHI
N30°35.48'
W95°04.39'

COLET
N30°26.96'
W95°09.66'

KYANN
N30°15.53'
W95°13.96'

HUMBLE
116.6 IAH
Chan 113

DAISETTA
116.9 DAS
Chan 116

TAKEOFF MINIMUMS
Rwys 15, 33: Standard.

NOTE: Chart not to scale.

(NARRATIVE ON FOLLOWING PAGE)

SC-5, 22 FEB 2024 to 21 MAR 2024

SC-5, 22 FEB 2024 to 21 MAR 2024

LUFKIN THREE DEPARTURE



DEPARTURE ROUTE DESCRIPTION

TAKEOFF ALL RUNWAYS: When entering controlled airspace, climb on assigned heading for RADAR vectors to KYANN INT. Maintain ATC assigned altitude. Expect filed altitude 10 minutes after departure, thence. . . .

. . . .on IAH R-013 to COLET INT, then right turn on LFK R-203 to LFK VORTAC.

LITTLE ROCK TRANSITION (LFK3.LIT): From over LFK VORTAC on LFK R-026 to SKKIP INT, then on LFK R-026 and LIT R-207 to LIT VORTAC.

SC-5, 22 FEB 2024 to 21 MAR 2024

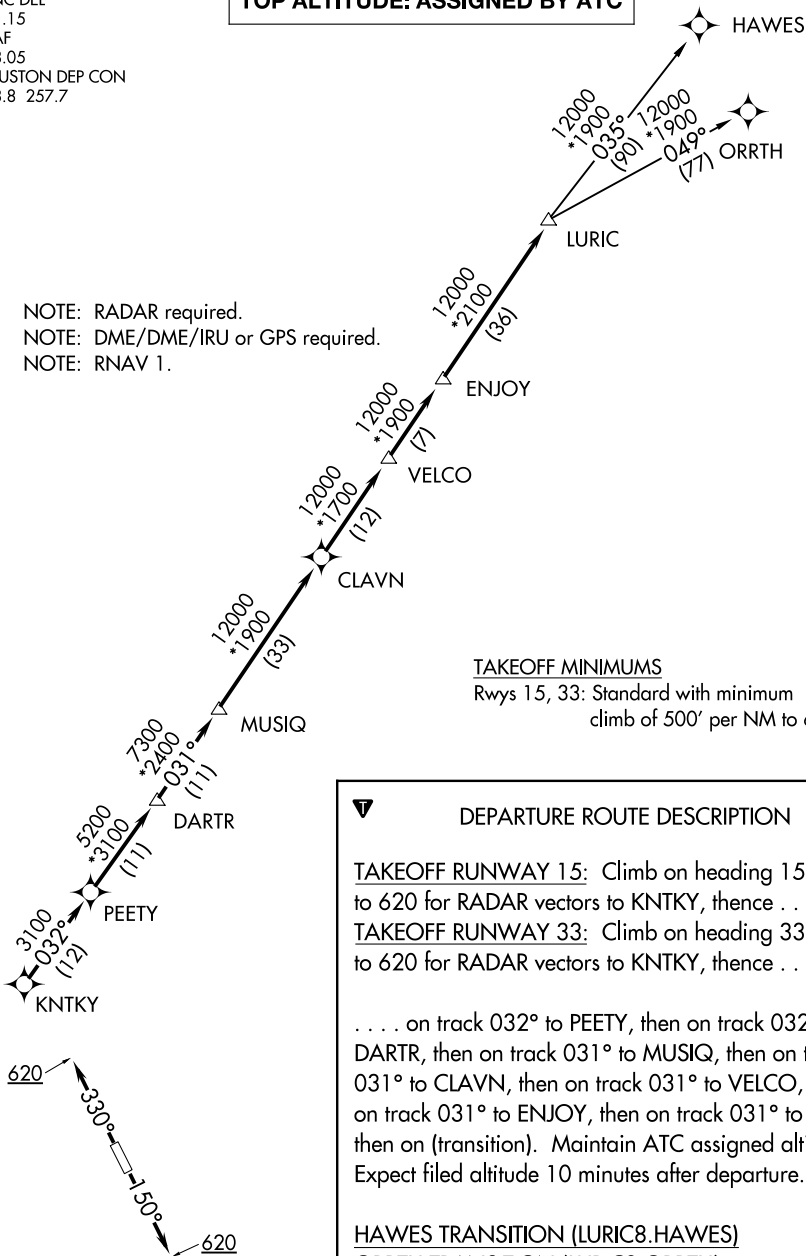
SC-5, 22 FEB 2024 to 21 MAR 2024

LURIC EIGHT DEPARTURE (RNAV)

CLNC DEL
121.15
CTAF
123.05
HOUSTON DEP CON
123.8 257.7

TOP ALTITUDE: ASSIGNED BY ATC

NOTE: RADAR required.
NOTE: DME/DME/IRU or GPS required.
NOTE: RNAV 1.



TAKEOFF MINIMUMS

Rwys 15, 33: Standard with minimum climb of 500' per NM to 620.

DEPARTURE ROUTE DESCRIPTION

TAKEOFF RUNWAY 15: Climb on heading 150° to 620 for RADAR vectors to KNTKY, thence

TAKEOFF RUNWAY 33: Climb on heading 330° to 620 for RADAR vectors to KNTKY, thence

. . . . on track 032° to PEETY, then on track 032° to DARTR, then on track 031° to MUSIQ, then on track 031° to CLAVN, then on track 031° to VELCO, then on track 031° to ENJOY, then on track 031° to LURIC, then on (transition). Maintain ATC assigned altitude. Expect filed altitude 10 minutes after departure.

HAWES TRANSITION (LURIC8.HAWES)

ORRTH TRANSITION (LURIC8.ORRTH)

NOTE: Chart not to scale.

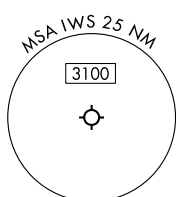
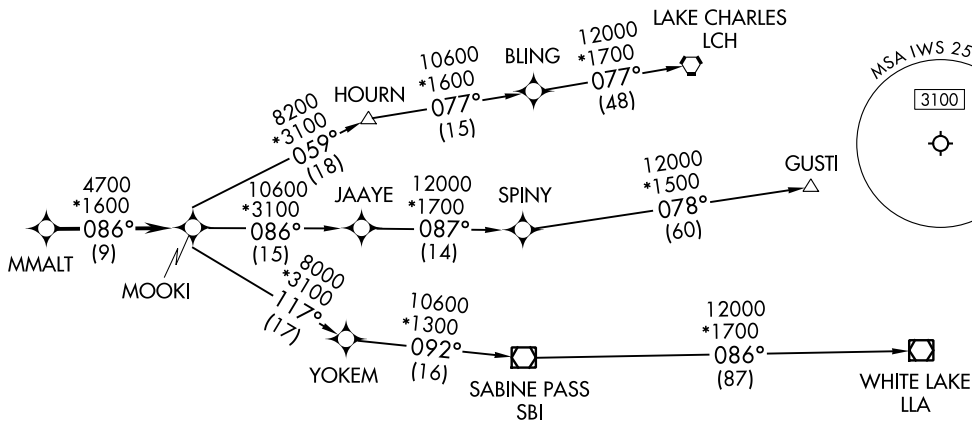
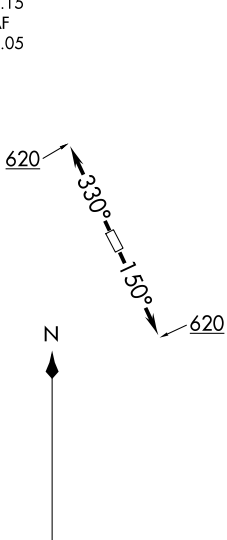
MMALT SEVEN DEPARTURE (RNAV)
 (MMALT7.MMALT) 30NONZ3

WEST HOUSTON (IWS)
 HOUSTON, TEXAS

HOUSTON DEP CON
 123.8 257.7
 CLNC DEL
 121.15
 CTAF
 123.05

RNAV 1 - DME/DME/IRU or GPS.
 RADAR required.

**TOP ALTITUDE:
 ASSIGNED BY ATC**



NOTE: GUSTI and LCH Transitions ATC assigned only for aircraft departing AXH, EFD, GLS, HPY, IWS, LBX, LVJ, SGR, TME, T00, T41 and 54T.



DEPARTURE ROUTE DESCRIPTION

TAKEOFF RUNWAY 15: Climb on heading 150° to 620 for RADAR vectors to MMALT, thence . . .
TAKEOFF RUNWAY 33: Climb on heading 330° to 620 for RADAR vectors to MMALT, thence . . .
 . . . on track 086° to MOOKI, then on (transition). Maintain ATC assigned altitude.
 Expect filed altitude 10 minutes after departure.

GUSTI TRANSITION (MMALT7.GUSTI)
LAKE CHARLES TRANSITION (MMALT7.LCH)
WHITE LAKE TRANSITION (MMALT7.LLA)

NOTE: Chart not to scale.

(MMALT7.MMALT) 23334
 MMALT SEVEN DEPARTURE (RNAV)

AL-6079 (FAA)

WEST HOUSTON (IWS)
 HOUSTON, TEXAS

RADAR and DME required.

TOP ALTITUDE:
ASSIGNED BY ATC

TAKEOFF MINIMUMS

Rwys 15, 33: Standard

CLNC DEL
121.15
CTAF
123.05
HOUSTON DEP CON
123.8 257.7

FORT STOCKTON
116.9 FST
Chan 116
N30°57.13'
W102°58.54'
L-19, H-6

SAN ANTONIO
116.8 SAT
Chan 115
N29°38.64'-W98°27.68'
L-19, H-7

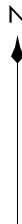
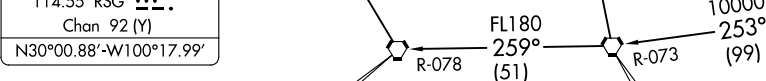
SKUBA
N29°11.72'
W95°47.47'

ROCKSPRINGS
114.55 RSG
Chan 92 (Y)
N30°00.88'-W100°17.99'

COTULLA
115.8 COT
Chan 105
N28°27.72'-W99°07.11'

THREE RIVERS
111.4 THX
Chan 51
N28°30.30'-W98°09.03'

PALACIOS
117.3 PSX
Chan 120
N28°45.87'-W96°18.37'



(NARRATIVE ON FOLLOWING PAGE)

NOTE: Chart not to scale.

PALACIOS THREE DEPARTURE
(PSX3, PSX) 03NOV22

HOUSTON, TEXAS
WEST HOUSTON (IWS)

(PSX3, PSX) 22307
PALACIOS THREE DEPARTURE

AL-6079 (FAA)
WEST HOUSTON (IWS)
HOUSTON, TEXAS

PALACIOS THREE DEPARTURE



DEPARTURE ROUTE DESCRIPTION

TAKEOFF ALL RUNWAYS: When entering controlled airspace, climb on assigned heading for RADAR vectors to SKUBA. Maintain ATC assigned altitude. Expect filed altitude 10 minutes after departure, thence

. . . . on PSX R-038 to PSX VORTAC.

FORT STOCKTON TRANSITION (PSX3.FST): From over PSX VORTAC on PSX R-253 and THX R-073 to THX VORTAC, then on THX R-259 and COT R-078 to COT VORTAC, then on COT R-318 and RSG R-136 to RSG VORTAC, then on RSG R-283 and FST R-100 to FST VORTAC.

SAN ANTONIO TRANSITION (PSX3.SAT): From over PSX VORTAC on PSX R-253 and THX R-073 to THX VORTAC, then on SAT R-158 to SAT VORTAC.

SC-5, 22 FEB 2024 to 21 MAR 2024

SC-5, 22 FEB 2024 to 21 MAR 2024

STRYA EIGHT DEPARTURE (RNAV)

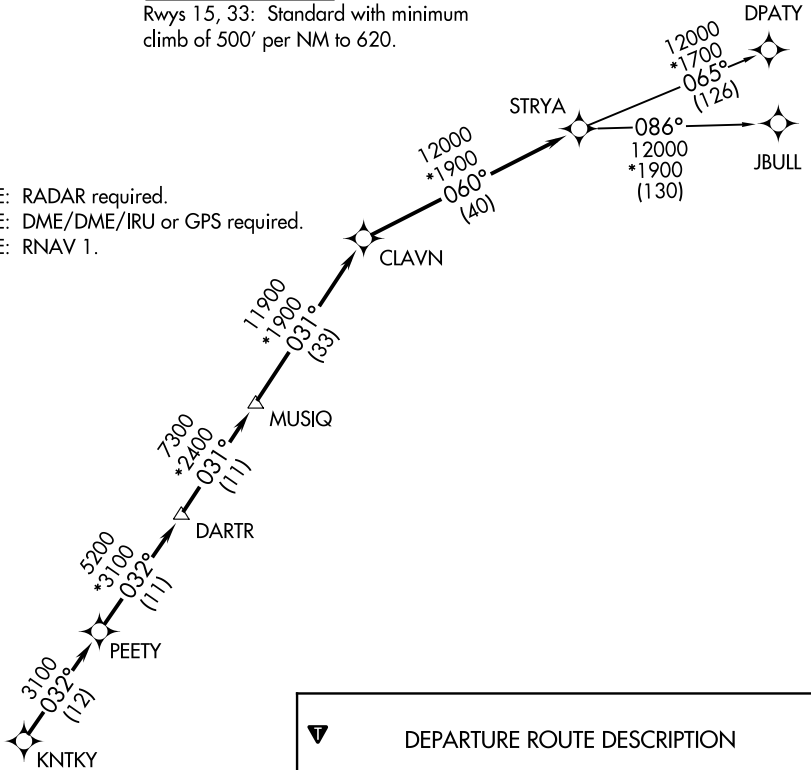
TOP ALTITUDE: ASSIGNED BY ATC

CTAF
123.05
CLNC DEL
121.15
HOUSTON DEP CON
123.8 257.7

TAKEOFF MINIMUMS

Rwy 15, 33: Standard with minimum
climb of 500' per NM to 620.

- NOTE: RADAR required.
- NOTE: DME/DME/IRU or GPS required.
- NOTE: RNAV 1.



DEPARTURE ROUTE DESCRIPTION

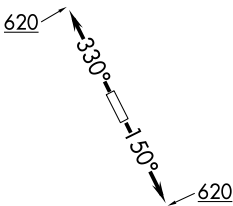
TAKEOFF RUNWAY 15: Climb on heading 150° to 620 for RADAR vectors to KNTKY, thence. . . .

TAKEOFF RUNWAY 33: Climb on heading 330° to 620 for RADAR vectors to KNTKY, thence. . . .

. . . .on track 032° to PEETY, then on track 032° to DARTR, then on track 031° to MUSIQ, then on track 031° to CLAVN, then on track 060° to STRYA, then on (transition). Maintain ATC assigned altitude. Expect filed altitude 10 minutes after departure.

DPATY TRANSITION (STRYA8.DPATY)

JBULL TRANSITION (STRYA8.JBULL)



NOTE: Chart not to scale.

SC-5, 22 FEB 2024 to 21 MAR 2024

SC-5, 22 FEB 2024 to 21 MAR 2024

STRYA EIGHT DEPARTURE (RNAV)

(STYCK8.STYCK) 21280

AL-6079 (FAA)

WEST HOUSTON (IWS)

STYCK EIGHT DEPARTURE (RNAV)

HOUSTON, TEXAS

CLNC DEL

121.15

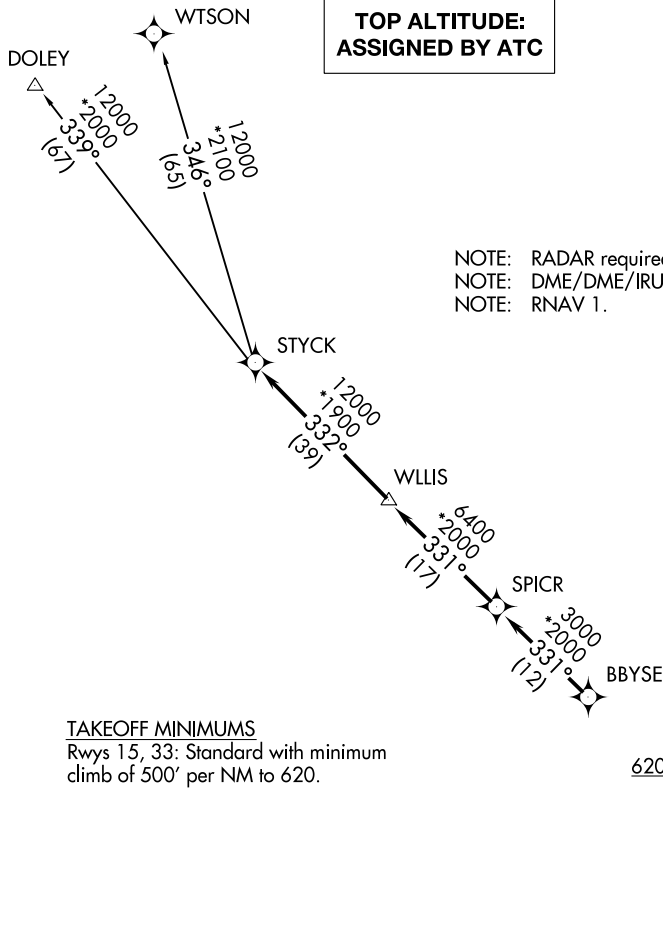
CTAF

123.05

HOUSTON DEP CON

123.8 257.7

**TOP ALTITUDE:
ASSIGNED BY ATC**



- NOTE: RADAR required.
- NOTE: DME/DME/IRU or GPS required.
- NOTE: RNAV 1.

TAKEOFF MINIMUMS

Rwys 15, 33: Standard with minimum climb of 500' per NM to 620.

NOTE: Chart not to scale.



DEPARTURE ROUTE DESCRIPTION

TAKEOFF RUNWAY 15: Climb on heading 150° to 620 for RADAR vectors to BBYSE, thence. . .

TAKEOFF RUNWAY 33: Climb on heading 330° to 620 for RADAR vectors to BBYSE, thence. . .

. . . on track 331° to SPICR, then on track 331° to WLLIS, then on track 332° to STYCK, then on (transition). Maintain ATC assigned altitude. Expect filed altitude 10 minutes after departure.

DOLEY TRANSITION (STYCK8.DOLEY)

WTSON TRANSITION (STYCK8.WTSON)

STYCK EIGHT DEPARTURE (RNAV)

(STYCK8.STYCK) 07OCT21

HOUSTON, TEXAS

WEST HOUSTON (IWS)

SC-5, 22 FEB 2024 to 21 MAR 2024

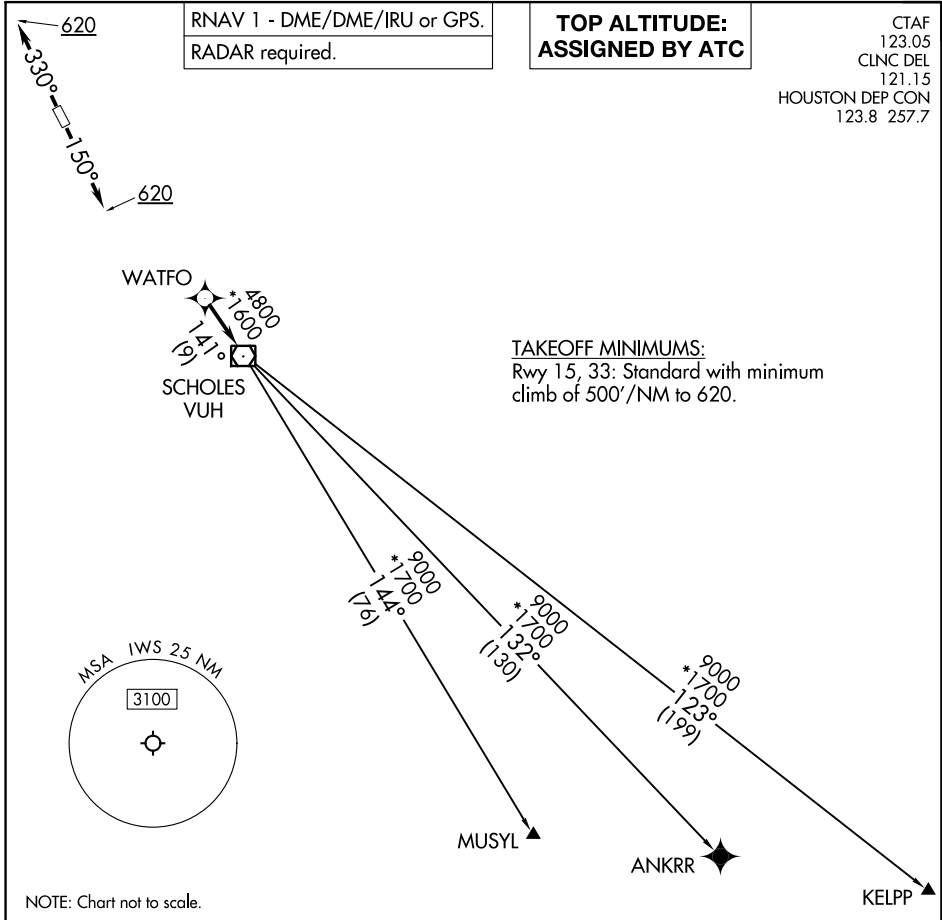
SC-5, 22 FEB 2024 to 21 MAR 2024

WATFO SIX DEPARTURE (RNAV)

RNAV 1 - DME/DME/IRU or GPS.
RADAR required.

**TOP ALTITUDE:
ASSIGNED BY ATC**

CTAF
123.05
CLNC DEL
121.15
HOUSTON DEP CON
123.8 257.7



TAKEOFF MINIMUMS:
Rwy 15, 33: Standard with minimum
climb of 500' /NM to 620.

SC-5, 22 FEB 2024 to 21 MAR 2024

SC-5, 22 FEB 2024 to 21 MAR 2024

DEPARTURE ROUTE DESCRIPTION

TAKEOFF RUNWAY 15: Climb on heading 150° to 620, for RADAR vectors to WATFO, thence. . . .

TAKEOFF RUNWAY 33: Climb on heading 330° to 620, for RADAR vectors to WATFO, thence. . . .

. . . .on track 141° to VUH VOR/DME, then on (transition). Maintain ATC assigned altitude. Expect filed altitude 10 minutes after departure.

ANKRR TRANSITION (WATFO6.ANKRR)

KELPP TRANSITION (WATFO6.KELPP)

MUSYL TRANSITION (WATFO6.MUSYL)

WYLSN EIGHT DEPARTURE (RNAV)

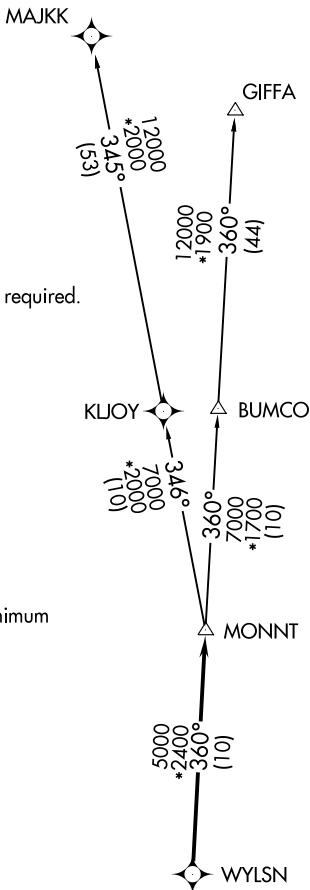
CLNC DEL
121.15
CTAF
123.05
HOUSTON DEP CON
123.8 257.7

**TOP ALTITUDE:
ASSIGNED BY ATC**

NOTE: RADAR required.
NOTE: DME/DME/IRU or GPS required.
NOTE: RNAV 1.

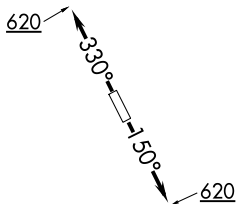
TAKEOFF MINIMUMS

Rwys 15, 33: Standard with minimum climb of 500' per NM to 620.



SC-5, 22 FEB 2024 to 21 MAR 2024

SC-5, 22 FEB 2024 to 21 MAR 2024



DEPARTURE ROUTE DESCRIPTION

TAKEOFF RUNWAY 15: Climb on heading 150° to 620 for RADAR vectors to WYLSN, thence. . . .

TAKEOFF RUNWAY 33: Climb on heading 330° to 620 for RADAR vectors to WYLSN, thence. . . .

. . . .on track 360° to MONNT, then on (transition). Maintain ATC assigned altitude. Expect filed altitude 10 minutes after departure.

GIFFA TRANSITION (WYLSN8.GIFFA)

MAJKK TRANSITION (WYLSN8.MAJKK)

NOTE: Chart not to scale.

WYLSN EIGHT DEPARTURE (RNAV)