

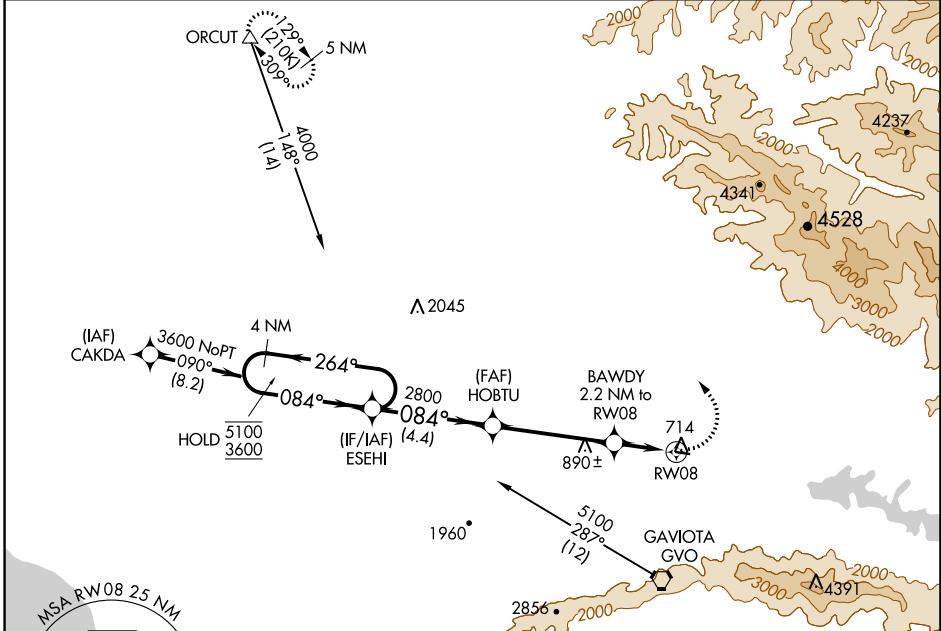
APP CRS	Rwy Idg	2803
084°	TDZE	674
	Apt Elev	674

RNAV (GPS) RWY 8

SANTA YNEZ/KUNKLE FLD (IZA)

RNP APCH-GPS.	MISSED APPROACH: Climbing left turn to 5000 direct ORCUT and hold.
<p>▼ Rwy 8 helicopter visibility reduction below 3/4 SM NA.</p> <p>▲ Circling Rwy 8 NA at night.</p>	

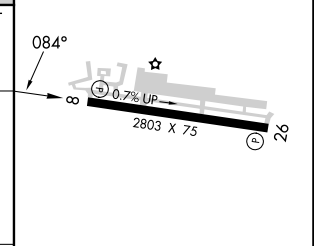
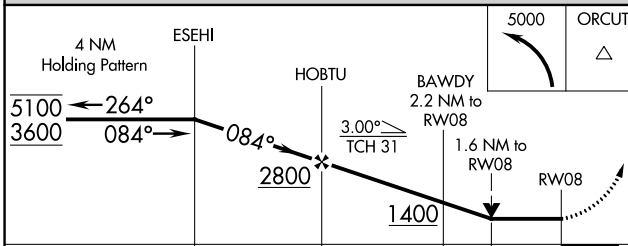
AWOS-3PT 118.075	SANTA BARBARA APP CON * 124.15 327.8	UNICOM 122.8 (CTAF) 0
----------------------------	--	---------------------------------



SW-3, 22 FEB 2024 to 21 MAR 2024

SW-3, 22 FEB 2024 to 21 MAR 2024

ELEV 674	TDZE 674
----------	----------



CATEGORY	A	B	C	D
LNVA MDA	1180-1	506 (600-1)		NA
CIRCLING	1220-1 546 (600-1)	1340-1 666 (700-1)		NA

REIL Rws 8 and 26 0
MRL Rwy 8-26 0

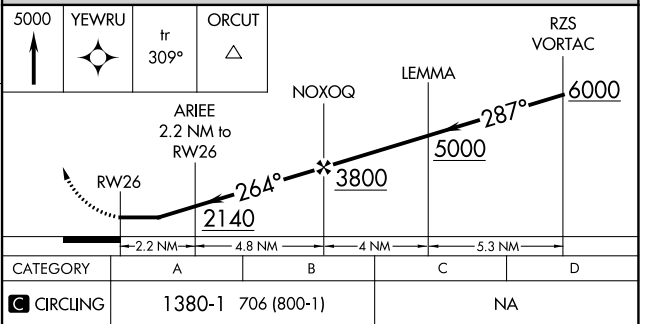
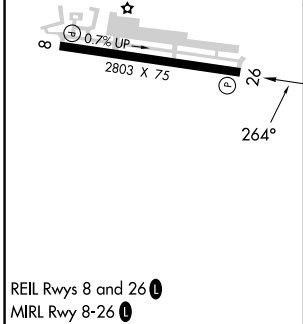
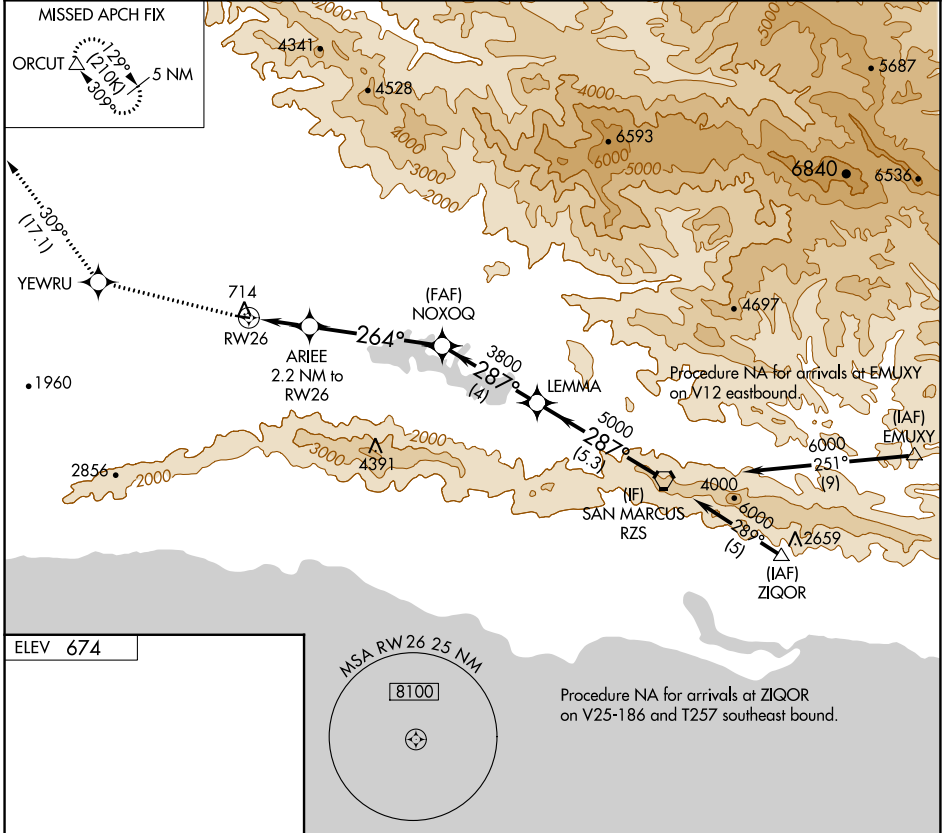
APP CRS	Rwy Idg	N/A
264°	TDZE	N/A
	Apt Elev	674

RNAV (GPS)-A

SANTA YNEZ/KUNKLE FLD (IZA)

RNP APCH-GPS.	MISSED APPROACH: Climb to 5000 direct YEWRU and track 309° to ORCUT and hold.
Circling Rwy 8 NA at night.	

AWOS-3PT 118.075	SANTA BARBARA APP CON* 124.15 327.8	UNICOM 122.8 (CTAF) 0
----------------------------	---	---------------------------------



SW-3, 22 FEB 2024 to 21 MAR 2024

SW-3, 22 FEB 2024 to 21 MAR 2024

VORTAC RZS 114.9 Chan 96	APP CRS 097°	Rwy Idg TDZE 674 Apt Elev 674	2803
--	------------------------	---	-------------

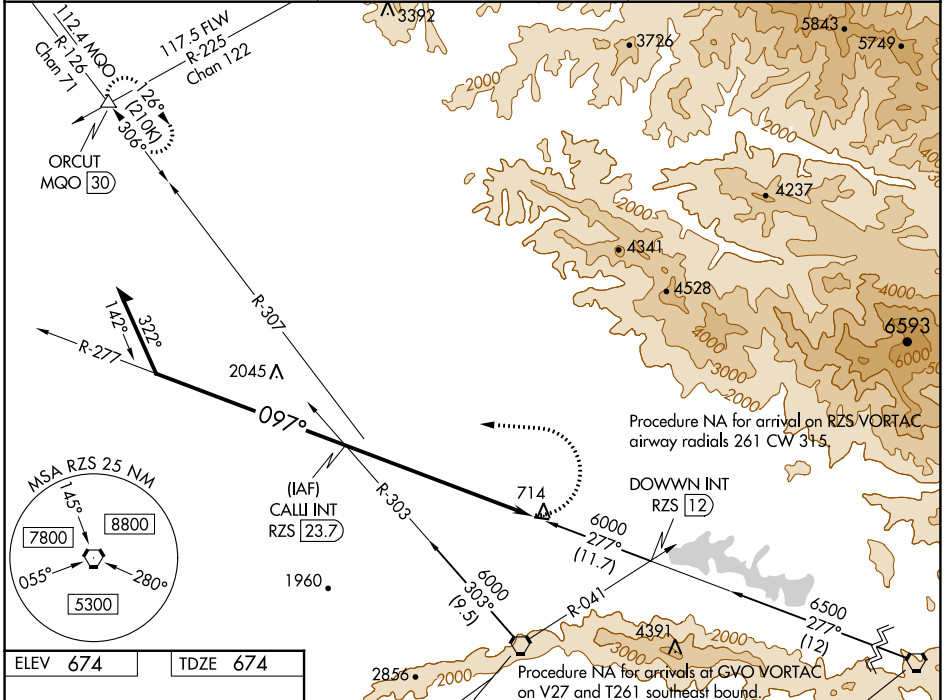
VOR RWY 8

SANTA YNEZ/KUNKLE FLD (IZA)

⚠ Straight-in Rwy 8 NA at night. Circling Rwy 8 NA at night.
⚠ Rwy 8 helicopter visibility reduction below 1 SM NA.

MISSED APPROACH: Climbing left turn to 6000 on heading 285° and on GVO VORTAC R-307 and MQO VORTAC R-126 to ORCUT INT and hold.

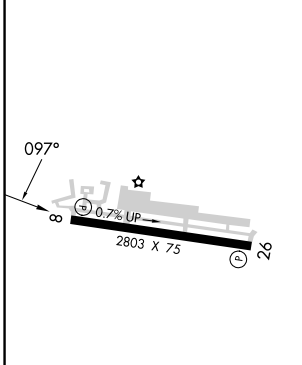
AWOS-3PT 118.075	SANTA BARBARA APP CON* 124.15 327.8	UNICOM 122.8 (CTAF) 0
----------------------------	---	---------------------------------



SW-3, 22 FEB 2024 to 21 MAR 2024

SW-3, 22 FEB 2024 to 21 MAR 2024

ELEV 674	TDZE 674
-----------------	-----------------

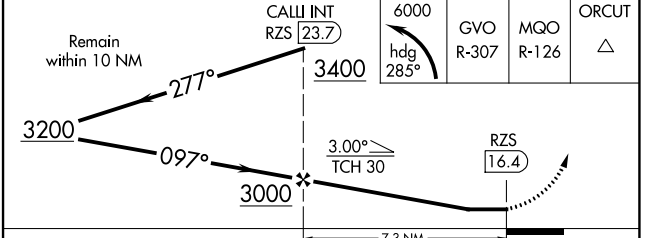


REIL Rws 8 and 26 **Ⓛ**
MIRL Rwy 8-26 **Ⓛ**

FAF to MAP 7.3 NM

Knots	60	90	120	150	180
Min:Sec	7:18	4:52	3:39	2:55	2:26

GAVIOTA 113.8 GVO Chan 85	SAN MARCUS 114.9 RZS Chan 96
---------------------------------	------------------------------------



CATEGORY	A	B	C	D
S-8	2040-1¼ 1366 (1400-1¼)	2040-1½ 1366 (1400-1½)		NA
Ⓛ CIRCLING	2040-1¼ 1366 (1400-1¼)	2040-1½ 1366 (1400-1½)		NA