

WAAS CH 62920 W18A	APP CRS 178°	Rwy ldg TDZE Apt Elev	6500 727 727
--	------------------------	-----------------------------	---

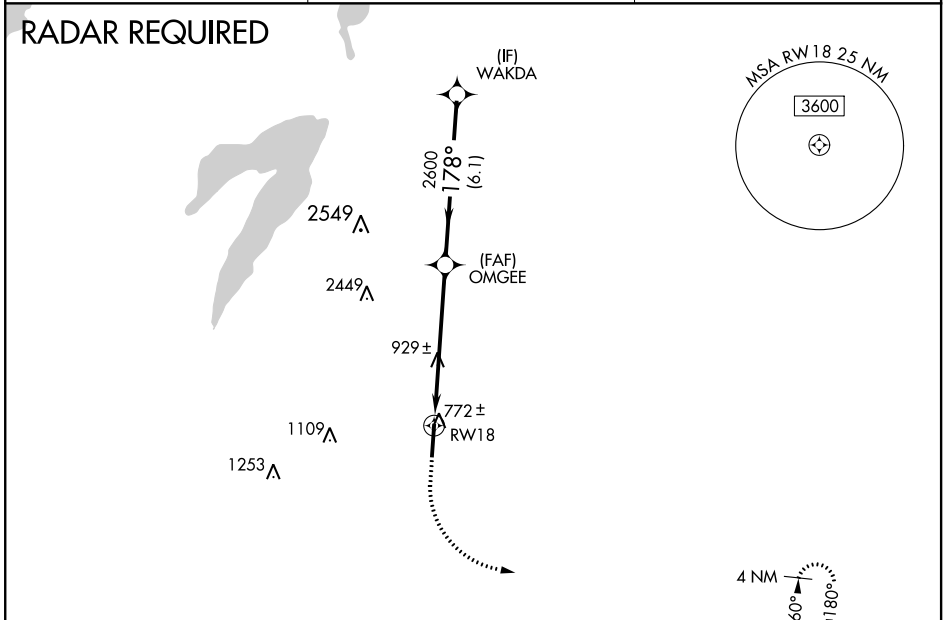
RNAV (GPS) RWY 18

MID-WAY RGNL (JWY)

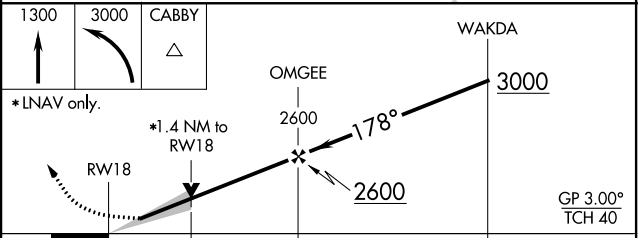
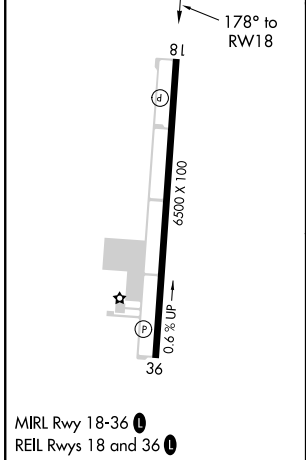
⚠ Baro-VNAV NA when using Dallas Love Field altimeter setting. For uncompensated Baro-VNAV systems, LNAV/VNAV NA below -16°C (4°F) or above 39°C (102°F).
⚠ DME/DME RNP-0.3 NA. VDP NA with Dallas Love Field altimeter setting. When local altimeter setting not received, use Dallas Love Field altimeter setting and increase all DA 88 feet and all MDA 100 feet, increase LPV and LNAV/VNAV visibility ¼ mile all Cats, LNAV Cats C and D ⅜ mile, and Circling Cat D visibility ¼ mile.

MISSED APPROACH: Climb to 1300 then climbing left turn to 3000 direct CABBY and hold.

AWOS-3 119.575	REGIONAL APP CON 125.2 343.65	UNICOM 122.975 (CTAF) 0
--------------------------	---	-----------------------------------



ELEV 727	TDZE 727
-----------------	-----------------



CATEGORY	A	B	C	D
LPV DA		927-¾	200 (200-¾)	
LNAV/VNAV DA		977-⅞	250 (300-⅞)	
LNAV MDA	1220-1	493 (500-1)	1220-1⅓	493 (500-1⅓)
CIRCLING	1220-1	493 (500-1)	1220-1½ 493 (500-1½)	1300-2 573 (600-2)

WAAS CH 62814 W36A	APP CRS 358°	Rwy ldg TDZE Apt Elev	6500 703 726
--	------------------------	-----------------------------	---

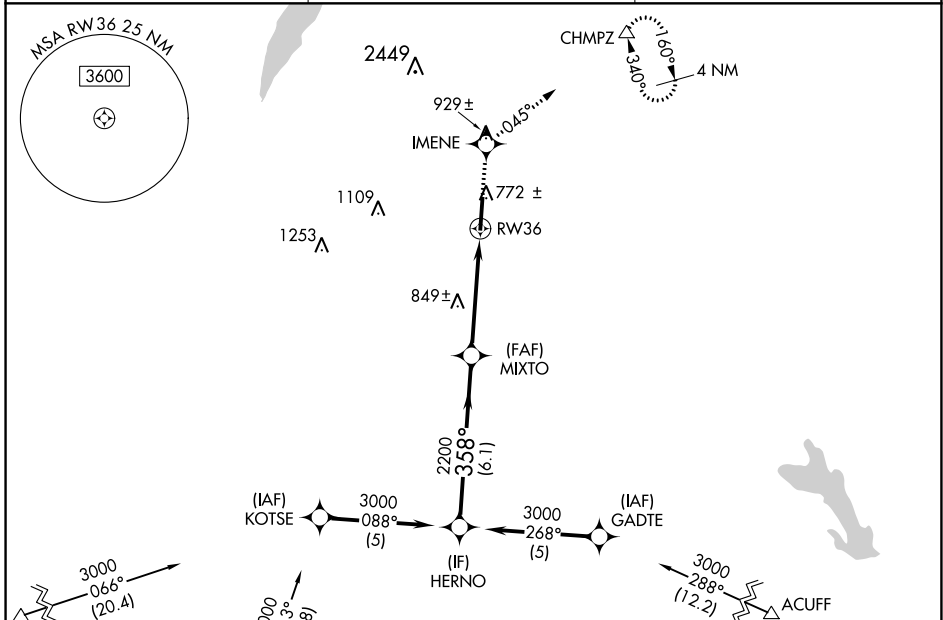
RNAV (GPS) RWY 36

MID-WAY RGNL (JWY)

⚠ For uncompensated Baro-VNAV systems, LNAV/VNAV NA below -16°C (4°F) or above 47°C (117°F). DME/DME RNP-0.3 NA. When local altimeter setting not received, use Dallas Love Field altimeter setting and increase all DA 88 feet and all MDA 100 feet, increase LPV all Cats visibility ¼ mile, LNAV/VNAV all Cats visibility ½ mile, LNAV Cats C and D visibility ¼ mile, Circling Cat D visibility ¼ mile. Baro-VNAV and VDP NA when using Dallas Love Field altimeter setting.

MISSED APPROACH: Climb to 3000 direct IMENE and right turn via track 045° to CHMPZ and hold, continue climb-in-hold to 3000.

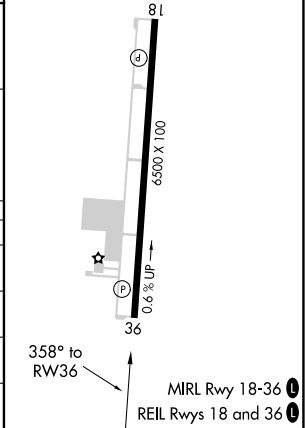
AWOS-3 119.575	REGIONAL APP CON 125.2 343.65	UNICOM 122.975 (CTAF) 0
--------------------------	---	-----------------------------------



ELEV 726	TDZE 703
----------	----------

Procedure Turn NA	GP 3.00° TCH 40	3000	358°	MIXTO	2200	358°	RW36	1.1	CHMPZ
		6.1 NM		3.5 NM		1.1			

CATEGORY	A	B	C	D
LPV DA		953-1	250 (300-1)	
LNAV/VNAV DA		992-1	289 (300-1)	
LNAV MDA	1100-1	397 (400-1)		1100-1¼ 397 (400-1¼)
CIRCLING	1140-1 414 (500-1)	1180-1 454 (500-1)	1180-1½ 454 (500-1½)	1300-2 574 (600-1)



SC-2, 05 NOV 2020 to 03 DEC 2020

SC-2, 05 NOV 2020 to 03 DEC 2020