

EXECUTIVE ONE DEPARTURE (RNAV)
(EXTVE1.PLFMD) 25AUG11

ATIS
124.75
CLNC DEL
119.85
GND CON
121.9 348.6
CTAF
122.8
CHARLESTON DEP CON
120.7 306.925

TAKEOFF MINIMUMS:

Rwy 4: ATC climb of 500' per NM to 900.
Rwy 9: ATC climb of 500' per NM to 800.
Rwy 22: Standard with minimum climb of 245' per NM to 520. ATC climb of 500' per NM to 1300.
Rwy 27: ATC climb of 500' per NM to 1500.

- NOTE: Transponder code will be issued by Charleston clearance delivery.
- NOTE: If unable to accept climb rate, advise ATC on initial contact.
- NOTE: RNAV 1.
- NOTE: GPS required.



DEPARTURE ROUTE DESCRIPTION

TAKEOFF RWY 4: Climb heading 037° to 520 MSL, then left turn direct RNDAH, cross RNDAH at or above 2000, direct GECHE and then on depicted route to PLFMD, thence. . . .
TAKEOFF RWY 9: Climb heading 094° to 520 MSL, then right turn direct RNDAH, cross RNDAH at or above 2000, direct GECHE and then on depicted route to PLFMD, thence. . . .
TAKEOFF RWY 22: Climb heading 217° to 520 MSL, then right turn direct RNDAH, cross RNDAH at or above 2000, direct GECHE and then on depicted route to PLFMD, thence. . . .
TAKEOFF RWY 27: Climb heading 274° to 520 MSL, then direct RNDAH, cross RNDAH at or above 2000, direct GECHE and then on depicted route to PLFMD, thence. . . .

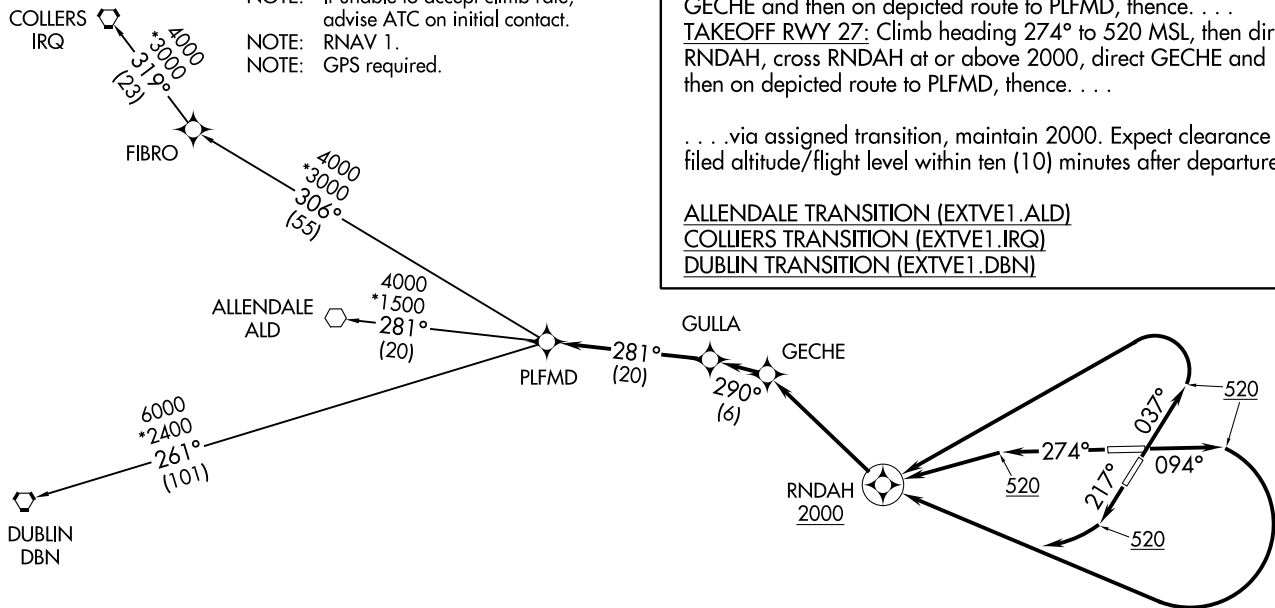
. . . .via assigned transition, maintain 2000. Expect clearance to filed altitude/flight level within ten (10) minutes after departure.

ALLENDALE TRANSITION (EXTVE1.ALD)
COLLIERS TRANSITION (EXTVE1.IRQ)
DUBLIN TRANSITION (EXTVE1.DBN)

(EXTVE1.PLFMD) 1728S
EXECUTIVE ONE DEPARTURE (RNAV)

AL-5354 (FAA)

CHARLESTON EXECUTIVE (JZI)
CHARLESTON SOUTH CAROLINA



NOTE: Chart not to scale.

CHARLESTON SOUTH CAROLINA
CHARLESTON EXECUTIVE (JZI)

KIAWAH ONE DEPARTURE (RNAV)
(KAWA1.LGRHD) 25AUG11

KIAWAH ONE DEPARTURE (RNAV)
(KAWA1.LGRHD) 17285

AL-5354 (FAA)

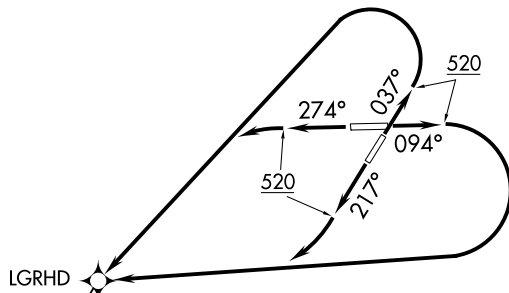
CHARLESTON EXECUTIVE (JTZ)
CHARLESTON, SOUTH CAROLINA

ATIS
124.75
CLNIC DEL
119.85
GND CON
121.9 348.6
CTAF
122.8
CHARLESTON DEP CON
120.7 306.925

TAKEOFF MINIMUMS:

Rwys 4, 9, 27: ATC climb of 500' per NM to 520.
Rwy 22: Standard with minimum climb of 245' per NM to 520. ATC climb of 500' per NM to 520.

- NOTE: Transponder code will be issued by Charleston clearance delivery.
NOTE: If unable to accept climb rate, advise ATC on initial contact.
NOTE: GPS required.
NOTE: RNAV 1.



LGRHD

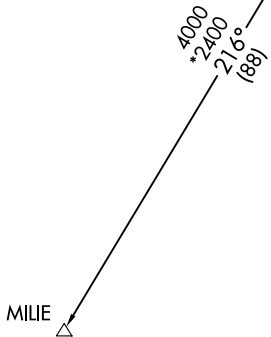


DEPARTURE ROUTE DESCRIPTION

TAKEOFF RWY 4: Climb heading 037° to 520 MSL, then left turn direct LGRHD, thence. . . .
TAKEOFF RWY 9: Climb heading 094° to 520 MSL, then right turn direct LGRHD, thence. . . .
TAKEOFF RWY 22: Climb heading 217° to 520 MSL, then right turn direct LGRHD, thence. . . .
TAKEOFF RWY 27: Climb heading 274° to 520 MSL, then left turn direct LGRHD, thence. . . .

. . . . via assigned transition/route, maintain 2000. Expect clearance to filed altitude/flight level within ten (10) minutes after departure.

MILIE TRANSITION (KAWA1.MILIE)



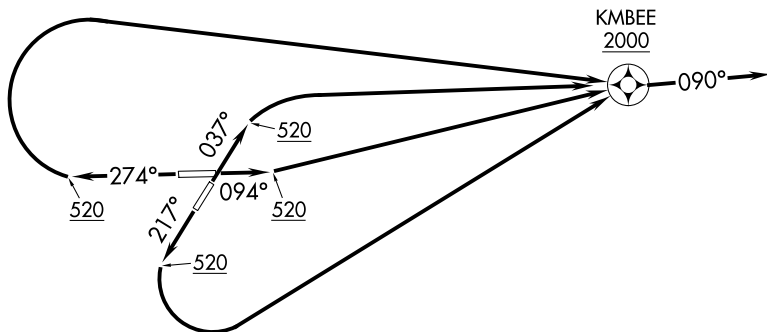
NOTE: Chart not to scale.

CHARLESTON, SOUTH CAROLINA
CHARLESTON EXECUTIVE (JTZ)

KMBEE ONE DEPARTURE (RNAV)

ATIS
124.75
CLNC DEL
119.85
GND CON
121.9 348.6
CTAF
122.8
CHARLESTON DEP CON
120.7 306.925

- NOTE: Transponder code will be issued by Charleston clearance delivery.
- NOTE: If unable to accept climb rate or crossing restriction, advise ATC on initial contact.
- NOTE: RNAV 1.
- NOTE: GPS required.
- NOTE: RADAR required.



TAKEOFF MINIMUMS:
 Rwys 4, 22, 27: ATC climb of 500' per NM to 520.
 Rwy 9: ATC climb of 500' per NM to 620.

NOTE: Chart not to scale.

DEPARTURE ROUTE DESCRIPTION

TAKEOFF RWY 4: Climb heading 037° to 520 MSL, then right turn direct KMBEE, cross KMBEE at or above 2000, thence. . . .

TAKEOFF RWY 9: Climb heading 094° to 520 MSL, then direct KMBEE, cross KMBEE at or above 2000, thence. . . .

TAKEOFF RWY 22: Climb heading 217° to 520 MSL, then left turn direct KMBEE, cross KMBEE at or above 2000, thence. . . .

TAKEOFF RWY 27: Climb heading 274° to 520 MSL, then right turn direct KMBEE, cross KMBEE at or above 2000, thence. . . .

. . . fly heading 090° or as assigned by ATC, expect RADAR vectors on course. Maintain 2000. Expect clearance to filed altitude within ten (10) minutes after departure.