

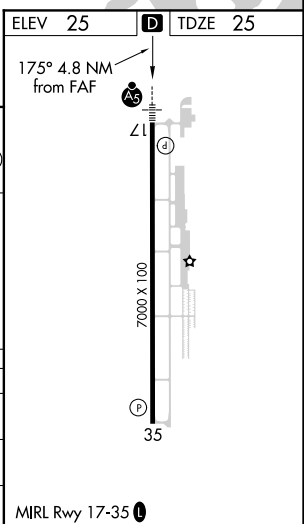
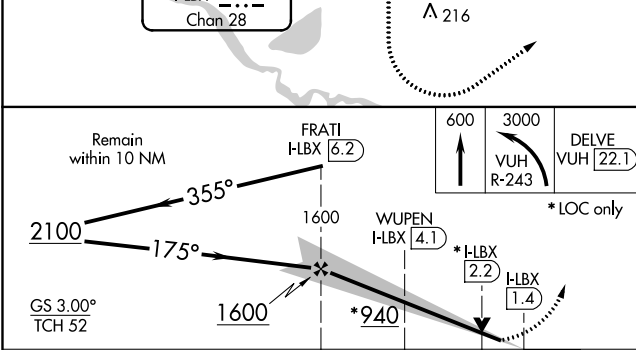
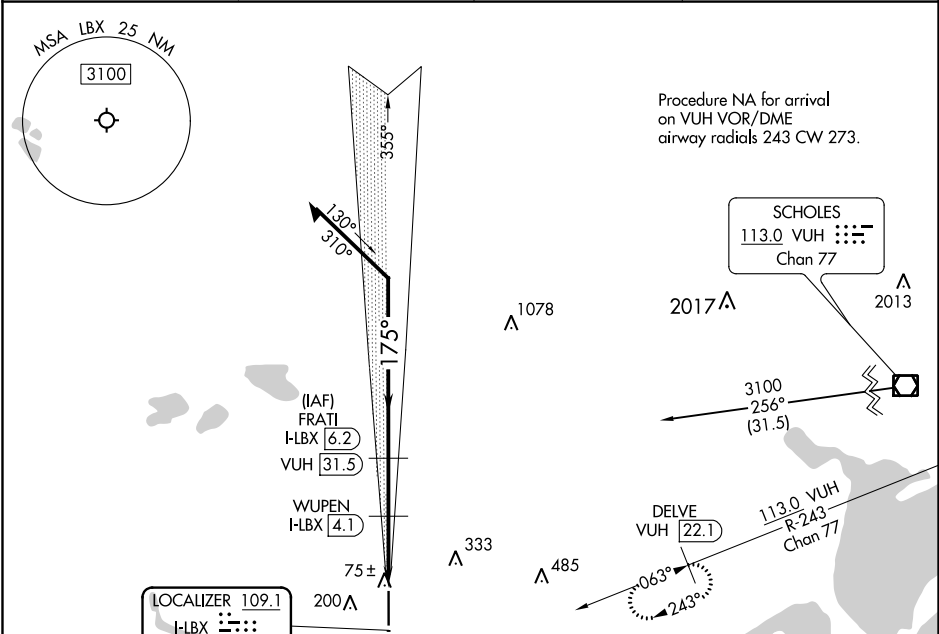
LOC/DME I-LBX 109.1 Chan 28	APP CRS 175°	Rwy Idg TDZE 25 Apt Elev 25
---	------------------------	---

ILS or LOC RWY 17

TEXAS GULF COAST RGNL (L.BX)

DME required.		MALSR	MISSED APPROACH: Climb to 600 then climbing left turn to 3000 on VUH VOR/DME R-243 to DELVE/VUH 22.1 DME and hold.
⚠ For inop ALS, increase S-LOC 17 Cat C/D visibility to 7/8 SM. ⚠ Circling NA east of Rwy 17-35.			

ASOS 119.925	HOUSTON APP CON 134.45 284.0	CLNC DEL 125.2	UNICOM 123.0 (CTAF) 0
------------------------	--	--------------------------	---------------------------------



CATEGORY	A	B	C	D
S-ILS 17		225-1/2	200 (200-1/2)	
S-LOC 17		340-1/2	315 (400-1/2)	
CIRCLING	500-1	475 (500-1)	500-1/2 475 (500-1/2)	620-2 595 (600-2)

SC-5, 11 AUG 2022 to 08 SEP 2022

SC-5, 11 AUG 2022 to 08 SEP 2022

WAAS CH 70316 W17A	APP CRS 175°	Rwy Idg TDZE 25 Apt Elev 25	7000
--	------------------------	---	-------------

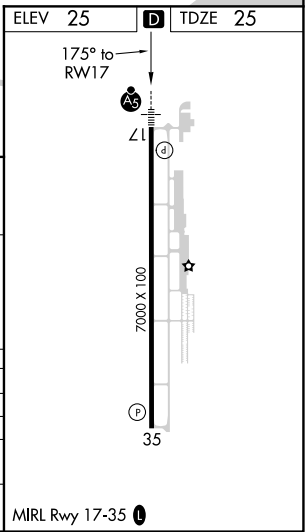
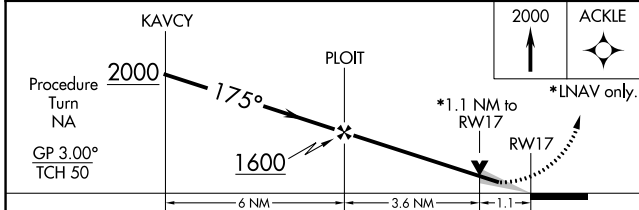
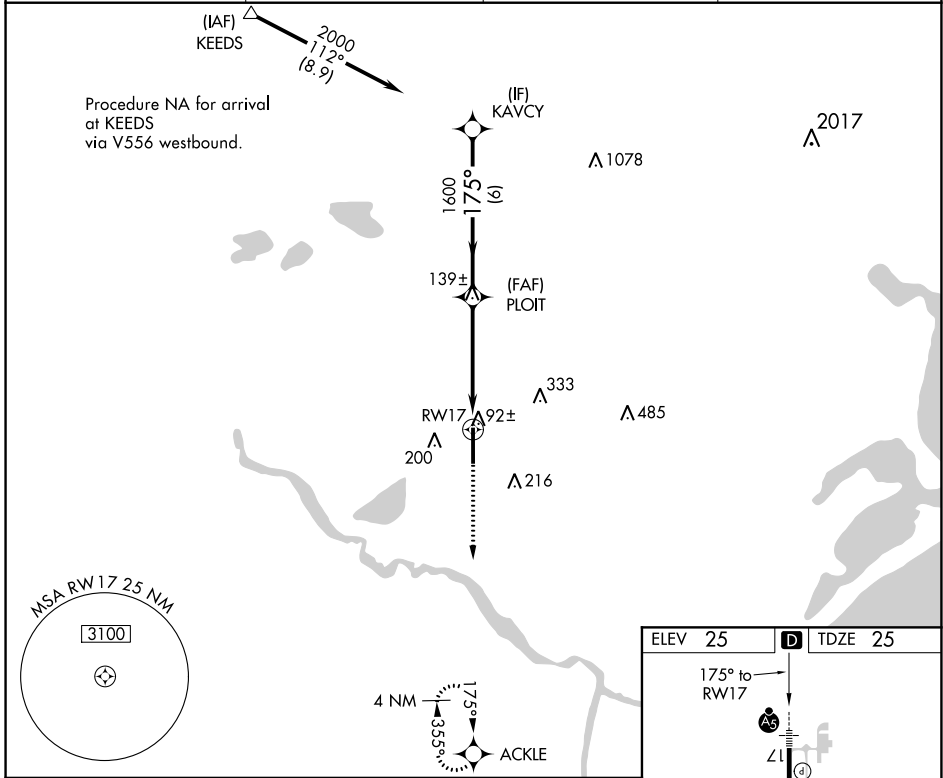
RNAV (GPS) RWY 17

TEXAS GULF COAST RGNL (L.B.X)

⚠ DME/DME RNP-0.3 NA. Baro-VNAV NA below -16°C (4°F). When local altimeter setting not received, use William P. Hobby altimeter setting and increase all DAs/MDAs 100 feet and Circling Cat D visibility ¼ SM. Baro-VNAV and VDP NA when using William P. Hobby altimeter setting. Circling NA east of Rwy 17-35. For inop MALSRL, increase LPV visibility to 1 mile all Cats, LNAV Cat D visibility to ¼ mile.

MALSRL MISSED APPROACH: Climb to 2000 direct ACKLE and hold.

ASOS 119.925	HOUSTON APP CON 134.45 284.0	CLNC DEL 125.2	UNICOM 123.0 (CTAF)
------------------------	--	--------------------------	-------------------------------



CATEGORY	A	B	C	D
LPV DA		282-½	257 (300-½)	
LNAV/VNAV DA		360-¾	335 (400-¾)	
LNAV MDA		420-½	395 (400-½)	420-1 395 (400-1)
C CIRCLING	480-1¼ 455 (500-1¼)	500-1¼ 475 (500-1¼)	500-1½ 475 (500-1½)	620-2 595 (600-2)

SC-5, 11 AUG 2022 to 08 SEP 2022

SC-5, 11 AUG 2022 to 08 SEP 2022

WAAS CH 77516 W35A	APP CRS 355°	Rwy Idg TDZE 25 Apt Elev 25	7000
--	------------------------	---	-------------

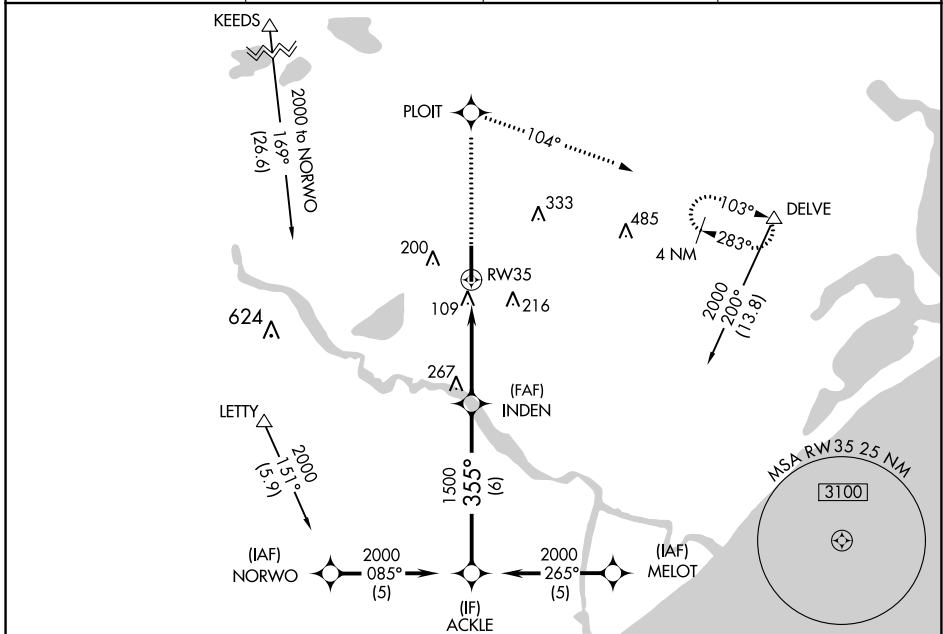
RNAV (GPS) RWY 35

TEXAS GULF COAST RGNL (L.B.X)

⚠ DME/DME RNP-0.3 NA. Baro-VNAV NA below -16°C (4°F). When local altimeter setting not received, use William P. Hobby altimeter setting and increase all DAs/MDAs 100 feet and Circling Cat D visibility ¼ SM. Baro-VNAV and VDP NA when using William P. Hobby altimeter setting. Circling NA east of Rwy 17-35.

MISSED APPROACH: Climb to 2000 direct PLOIT and right turn via 104° track to DELVE and hold.

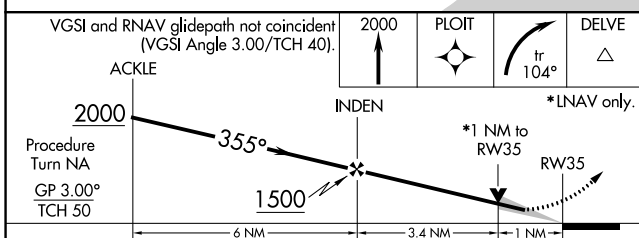
ASOS 119.925	HOUSTON APP CON 134.45 284.0	CLNC DEL 125.2	UNICOM 123.0 (CTAF) 0
------------------------	--	--------------------------	---------------------------------



SC-5, 11 AUG 2022 to 08 SEP 2022

SC-5, 11 AUG 2022 to 08 SEP 2022

ELEV 25	D TDZE 25
----------------	-------------------------



CATEGORY	A	B	C	D
LPV DA		275-¾	250 (300-¾)	
LNAV/VNAV DA		428-1½	403 (500-1½)	
LNAV MDA		420-1	395 (400-1)	420-1¼ 395 (400-1¼)
C CIRCLING	480-1½ 455 (500-1½)	500-1½	475 (500-1½)	620-2 595 (600-2)

