

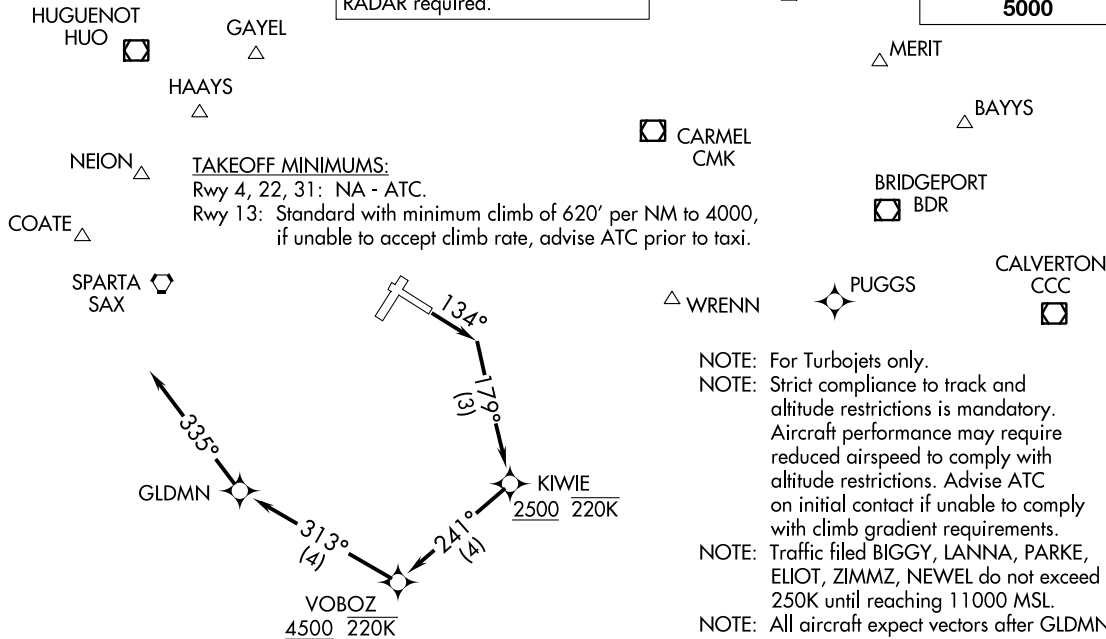
GLDMN EIGHT DEPARTURE (RNAV)
(GLDMN8, GLDMN) 29DEC22

NEW YORK, NEW YORK
LAGUARDIA (LGA)

D-ATIS
127.05
CLNC DEL
135.2
CPDLC
GND CON
121.7 263.0
LAGUARDIA TOWER
118.7 263.0
NEW YORK DEP CON
120.4 263.0

RNAV 1 - DME/DME/IRU or GPS.
RADAR required.

**TOP ALTITUDE:
5000**



DEPARTURE ROUTE DESCRIPTION

TAKEOFF RUNWAY 13: Climb on heading 134° to intercept course 179° to cross KIWIE at or above 2500 and at or below 220K, then on track 241° to cross VOBOZ at or above 4500 and at or below 220K, then on track 313° for GLDMN, then on track 335° for RADAR vector on course. Maintain 5000 or as assigned by ATC. Expect clearance to filed altitude/flight level 10 minutes after departure.

ALL AIRCRAFT: ATC CLIMB GRADIENT: If unable to accept climb rate advise ATC prior to taxi.
Rwy 13: 620' per NM to 4000.

NOTE: Chart not to scale.

(GLDMN8, GLDMN) 23222
GLDMN EIGHT DEPARTURE (RNAV)

LAGUARDIA (LGA)
NEW YORK, NEW YORK

A1-289 (FAA)

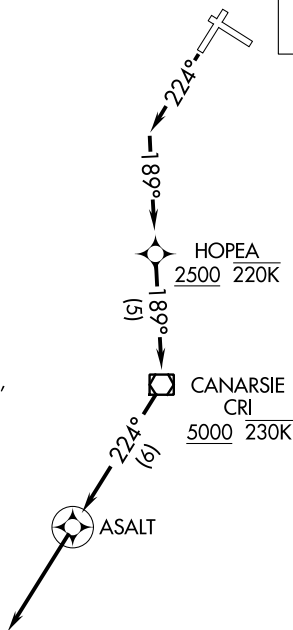
HOPEA THREE DEPARTURE (RNAV)

D-ATIS
127.05
CLNC DEL
135.2
CPDLC
GND CON
121.7 263.0
LAGUARDIA TOWER
118.7 263.0
NEW YORK DEP CON
120.4 263.0

**TOP ALTITUDE:
5000**

TAKEOFF MINIMUMS

Rwys 4, 13, 31: NA-ATC.
Rwy 22: Standard with minimum climb of 516' per NM to 5000.



SHIPP Δ

WAVEY Δ

ROBBINSVILLE
RBV \square

DIXIE Δ

WHITE Δ

NOTE: For Turbojets only.
NOTE: DME/DME/IRU or GPS required.
NOTE: RADAR required.
NOTE: RNAV 1.
NOTE: Do not exceed 220K until passing HOPEA.
NOTE: Do not exceed 230K until passing CRI VOR/DME.
NOTE: Strict compliance to track and altitude restrictions is mandatory. Aircraft performance may require reduced airspeed to comply with altitude restrictions. Advise ATC on initial contact if unable to comply with climb gradient requirements.
NOTE: Aircraft filed RBV VORTAC, WHITE, SHIPP, WAVEY, DIXIE expect vectors after ASALT.

NOTE: Chart not to scale.



DEPARTURE ROUTE DESCRIPTION

TAKEOFF RUNWAY 22: Climb heading 224° to intercept course 189° to cross HOPEA at or above 2500, then on track 189° to cross CRI VOR/DME at or above 5000, then on track 224° to ASALT, then on track 224° for vectors on course. Maintain 5000 or as assigned by ATC. Expect clearance to filed altitude/flight level 10 minutes after departure.

JUTES THREE DEPARTURE (RNAV)
(JUTES3.JUTES) 25JUN15

JUTES THREE DEPARTURE (RNAV)
(JUTES3.JUTES) 22335

AL-289 (FAA)

D-ATIS
127.05
CLNIC DEL
135.2
CPDLC
GND CON
121.7 263.0
LAGUARDIA TOWER
118.7 263.0
NEW YORK DEP CON
120.4 263.0

HUGUENOT HYO
GAYEL
HAAYS
NEION
COATE

GREKI
 MERIT

TOP ALTITUDE:
5000

TAKEOFF OBSTACLES:

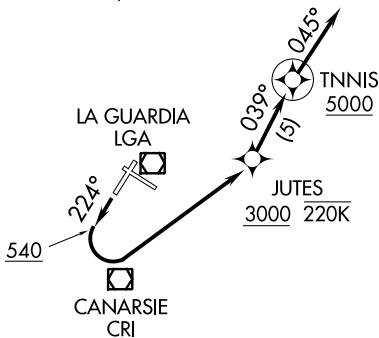
Rwy 22: Multiple trees and buildings beginning 165' from DER, 150' left of centerline up to 72' AGL/101' MSL. Multiple trees and buildings beginning 1731' from DER, 138' right of centerline up to 73' AGL/104' MSL. Localizer 421' from DER, 275' right of centerline 25' AGL/44' MSL. Fence 109' from DER, 335' right of centerline 14' AGL/31' MSL.

BAYYS

BRIDGEPORT BDR

- NOTE: All Turbojets.
- NOTE: Turboprops assigned by ATC only.
- NOTE: DME/DME/IRU or GPS required.
- NOTE: RADAR required.
- NOTE: RNAV 1.
- NOTE: Do not exceed 220K until passing JUTES.
- NOTE: Strict compliance to track and altitude restrictions is mandatory. Aircraft performance may require reduced airspeed to comply with altitude restrictions. Advise ATC on initial contact if unable to comply with climb gradient requirements.
- NOTE: All aircraft expect vectors after TNNIS.
- NOTE: Traffic filed BIGGY, ELIOT, LANNA, PARKE, ZIMMZ, NEWEL do not exceed 250K until reaching 11000.

NEWEL
 ELIOT
 ZIMMZ
 PARKE
 LANNA
 BIGGY



COLTS NECK COL

SHIPP

WAVEY

ROBBINSVILLE RBV

DIXIE

WHITE

TAKEOFF MINIMUMS:

Rwys 4, 13, 31: NA-ATC.
Rwy 22: Standard with minimum climb of 501' per NM to 540, then ATC climb of 356' per NM to 3000, then ATC climb of 374' per NM to 5000.

NOTE: Chart not to scale.

NEW YORK NEW YORK
LAGUARDIA (LGA)

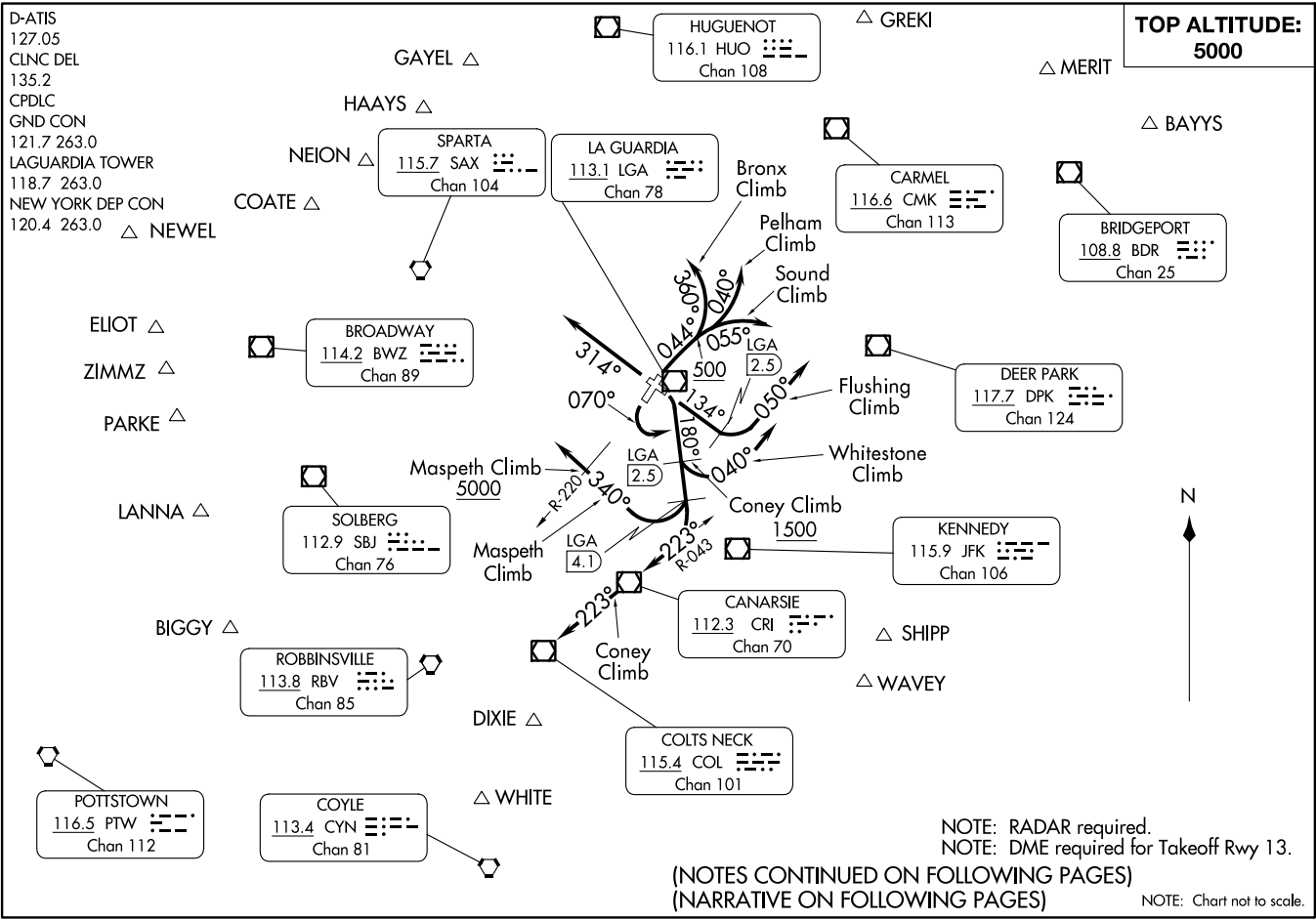
LAGUARDIA (LGA)
NEW YORK NEW YORK

DEPARTURE ROUTE DESCRIPTION

TAKEOFF RWY 22: Climb heading 224° to 540, then climbing left turn direct JUTES, cross JUTES at or above 3000, then on track 039° to cross TNNIS at or above 5000, then on heading 045° for vectors on course. Maintain 5000 or as assigned by ATC. Expect clearance to filed altitude/flight level 10 minutes after departure.

LAGUARDIA SEVEN DEPARTURE
(IGAW7.LGA) 31DEC20

LAGUARDIA SEVEN DEPARTURE
(IGAW7.LGA) 23334



D-ATIS
127.05
CLNC DEL
135.2
CPDLC
GND CON
121.7 263.0
LAGUARDIA TOWER
118.7 263.0
NEW YORK DEP CON
120.4 263.0 △ NEWEL

ELIOT △
ZIMMZ △
PARKE △

LANNA △

BIGGY △

POTSTOWN
116.5 PTW
Chan 112

NEION △
SPARTA
115.7 SAX
Chan 104

BROADWAY
114.2 BWZ
Chan 89

SOLBERG
112.9 SBJ
Chan 76

ROBBINSVILLE
113.8 RBV
Chan 85

COYLE
113.4 CYN
Chan 81

LA GUARDIA
113.1 LGA
Chan 78

HUGUENOT
116.1 HUO
Chan 108

CARMEL
116.6 CMK
Chan 113

DEER PARK
117.7 DPK
Chan 124

KENNEDY
115.9 JFK
Chan 106

CANARSIE
112.3 CRI
Chan 70

COLTS NECK
115.4 COL
Chan 101

BRIDGEPORT
108.8 BDR
Chan 25

TOP ALTITUDE:
5000

NOTE: RADAR required.
NOTE: DME required for Takeoff Rwy 13.

(NOTES CONTINUED ON FOLLOWING PAGES)
(NARRATIVE ON FOLLOWING PAGES)

NOTE: Chart not to scale.

NEW YORK, NEW YORK
LAGUARDIA (LGA)

LAGUARDIA (LGA)
NEW YORK, NEW YORK

LAGUARDIA SEVEN DEPARTURE



DEPARTURE ROUTE DESCRIPTION

TAKEOFF RUNWAY 4 (Bronx Climb): Climb on heading 044° to 500 then climbing left turn to heading 360°, maintain 5000, Thence....

TAKEOFF RUNWAY 4 (Pelham Climb): Climb on heading 044° to 500 then climbing left turn to heading 040°, maintain 5000, Thence....

TAKEOFF RUNWAY 4 (Sound Climb): Climb on heading 044° to 500 then climbing right turn to heading 055°, maintain 5000, Thence....

TAKEOFF RUNWAY 13 (Coney Climb): TURBOJETS ONLY - Requires minimum ATC climb of 900' per NM to 1500, if unable, advise ATC prior to taxiing onto the departure runway: Climbing right turn to heading 180° to intercept CRI R-043 (do not exceed 230K until intercepting CRI R-043) to CRI VOR/DME, then on CRI R-223. Cross LGA 2.5 DME at or above 1500, maintain 5000, Thence....

TAKEOFF RUNWAY 13 (Flushing Climb): Climb heading 134° to LGA 2.5 DME, then climbing left turn to heading 050°, maintain 5000, Thence....

TAKEOFF RUNWAY 13 (Maspeth Climb): TURBOJETS ONLY - Requires minimum ATC climb of 900' per NM to 4400, if unable advise ATC prior to taxiing onto the departure runway: Climbing right turn to heading 180°, at LGA 4.1 DME turn right heading 340°, maintain 5000, cross LGA R-220 at or above 5000, Thence....

TAKEOFF RUNWAY 13 (Whitestone Climb): Requires minimum ATC climb of 500' per NM to 1500, if unable advise ATC prior to taxiing onto the departure runway: Climbing right turn to heading 180° to LGA 2.5 DME, then left turn heading 040° (do not exceed 210K until established on heading 040°). Maintain 5000, Thence....

TAKEOFF RUNWAY 22: Climbing left turn to heading 070°, maintain 5000, Thence....

TAKEOFF RUNWAY 31: Climb on heading 314° (or as assigned by ATC), maintain 5000, Thence....

....expect vectors to assigned route/fix. Expect clearance to filed altitude/flight level within ten (10) minutes after departure.

TAKEOFF MINIMUMS:

Rwy 4: Standard.

Rwy 13 (Coney Climb): 400-2 ¼ or standard with minimum climb of 283' per NM to 300. ATC climb of 900' per NM to 1500.

Rwy 13 (Maspeth Climb): Standard with minimum climb of 323' per NM to 2100. ATC climb of 900' per NM to 4400.

Rwy 13 (Flushing Climb): 400-2 ¼ or standard with minimum climb of 283' per NM to 300. ATC climb of 283' per NM to 500.

Rwy 13 (Whitestone Climb): 400-2 ¼ or standard with minimum climb of 283' per NM to 300. ATC climb of 500' per NM to 1500.

Rwy 22: 300-2 ¼ or standard with minimum climb of 210' per NM to 400, or alternatively, with standard takeoff minimums and a normal 200' per NM climb gradient, takeoff must occur no later than 1100' prior to DER.

Rwy 31: 300-1 ½ or standard with minimum climb of 334' per NM to 500.

(CONTINUED ON FOLLOWING PAGE)

LAGUARDIA SEVEN DEPARTURE

NE-2, 22 FEB 2024 to 21 MAR 2024

NE-2, 22 FEB 2024 to 21 MAR 2024

LAGUARDIA SEVEN DEPARTURE



(NOTES CONTINUED)

- NOTE: Rwy 31 Departures: Expect turn on course leaving 6000.
- NOTE: Traffic filed over BIGGY, LANNA, ELIOT, PARKE, ZIMMZ, NEWEL: Do not exceed 250K until reaching 11000.
- NOTE: BAYYS Departures expect vectors to BDR/BDR R-054.
- NOTE: COATE Departures expect vectors to SAX/SAX R-311.
- NOTE: SHIPP Departures expect vectors to JFK/JFK R-139.
- NOTE: WAVEY Departures expect vectors to JFK/JFK R-156.
- NOTE: WHITE Departures expect vectors to COL/COL R-204.
- NOTE: BIGGY Departures expect vectors to SBJ/SBJ R-237.
- NOTE: DIXIE Departures expect vectors to COL/COL R-192.
- NOTE: ELIOT Departures expect vectors to SAX R-252. ELIOT authorized for all aircraft types but restricted to a final altitude of 14000 or 16000.
- NOTE: ZIMMZ Departures expect vectors to SAX R-250. ZIMMZ authorized for all aircraft types but restricted to a final altitude of FL180 and above.
- NOTE: NEWEL Departures expect vectors to SAX R-264. NEWEL authorized only for jet aircraft requesting a final altitude of FL180 and above.
- NOTE: GAYEL Departures expect vectors to DPK R-320.
- NOTE: LANNA Departures expect vectors to PTW R-059.
- NOTE: MERIT Departures expect vectors to LGA R-055.
- NOTE: NEION Departures expect vectors to LGA R-322.
- NOTE: PARKE Departures expect vectors to BWZ/BWZ R-250.
- NOTE: HAAYS Departures expect vectors to HUO.

NE-2, 22 FEB 2024 to 21 MAR 2024

NE-2, 22 FEB 2024 to 21 MAR 2024

NTHNS FIVE DEPARTURE (RNAV)

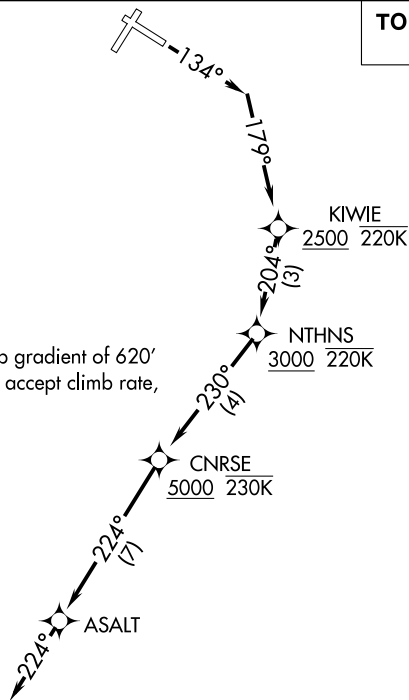
TOP ALTITUDE:
5000

D-ATIS
127.05
CLNC DEL
135.2
CPDLC
GND CON
121.7 263.0
LAGUARDIA TOWER
118.7 263.0
NEW YORK DEP CON
120.4 263.0

TAKEOFF MINIMUMS

Rwys 4, 22, 31: NA-ATC.

Rwy 13: Standard with minimum climb gradient of 620' per NM to 2500. If unable to accept climb rate, advise ATC on initial contact.



COLTS NECK
COL

ROBBINSVILLE
RBV

DIXIE

WHITE

SHIPP

WAVEY

- NOTE: For turbojet aircraft only.
- NOTE: RADAR required.
- NOTE: DME/DME/IRU or GPS required.
- NOTE: RNAV 1.
- NOTE: Strict compliance to track and altitude restrictions is mandatory. Aircraft performance may require reduced airspeed to comply with altitude restrictions. Advise ATC on initial contact if unable to comply with climb gradient requirements.
- NOTE: Aircraft filed RBV, WHITE, SHIPP, WAVEY, DIXIE: Expect RADAR vectors after ASALT.

NOTE: Chart not to scale.



DEPARTURE ROUTE DESCRIPTION

TAKEOFF RUNWAY 13: Climb on heading 134° to intercept course 179° to cross KIWIE at or above 2500 and at or below 220K, then on track 204° to cross NTHNS at or above 3000 and at or below 220K, then on track 230° to CNRSE at or above 5000 and at or below 230K, then on depicted route to ASALT, then on track 224° for RADAR vector on course. Maintain 5000 or as assigned by ATC. Expect clearance to filed altitude/flight level 10 minutes after departure.

TNNIS SIX DEPARTURE (RNAV)
(TNNIS6, TNNIS) 25JUN15

D-ATIS 127.05
CLNC DEL
135.2
CPDLC
GND CON
121.7 263.0
LAGUARDIA TOWER
118.7 263.0
NEW YORK DEP CON
120.4 263.0

**TOP ALTITUDE:
5000**

(TNNIS6, TNNIS) 22335
TNNIS SIX DEPARTURE (RNAV)

A1-289 (FAA)

LAGUARDIA (LGA)
NEW YORK, NEW YORK

NEWEL △
ELIOT △
ZIMMZ △
PARKE △
LANNA △
POTTSTOWN PTW

HUGUENOT HUO
NEION △
COATE △
SPARTA SAX

LA GUARDIA LGA

BROADWAY BWZ

JOHN F. KENNEDY INTL
KENNEDY JFK

NOTE: For all Turbojet aircraft.
NOTE: Turboprop traffic as assigned by ATC.
NOTE: DME/DME/IRU or GPS required.
NOTE: Radar required.
NOTE: RNAV 1.
NOTE: All aircraft expect vectors after TNNIS.

COLTS NECK COL

NOTE: Do not exceed 220K until passing JUTES.
NOTE: Strict compliance to track and altitude restrictions is mandatory. Aircraft performance may require reduced airspeed to comply with altitude restrictions. If unable to comply with climb gradient, notify ATC on initial contact.
NOTE: Traffic filed over BIGGY, LANNA, ELIOT, PARKE, ZIMMZ, NEWEL: Do not exceed 250K until reaching 11000.

TAKEOFF MINIMUMS:
Rwys 4, 22, 31: NA-ATC.
Rwy 13: Standard with minimum climb of 310' per NM to 2000. ATC climb of 467' per NM to 4700.

DIXIE △

WHITE △ (NOTES CONTINUED ON FOLLOWING PAGE) (NARRATIVE ON FOLLOWING PAGE) NOTE: Chart not to scale.

NEW YORK, NEW YORK
LAGUARDIA (LGA)



GREKI △
MERIT △
BAYYS △
BRIDGEPORT BDR

DEER PARK DPK

WAVEY △

SHIPP △

TNNIS SIX DEPARTURE (RNAV)



DEPARTURE ROUTE DESCRIPTION

TAKEOFF RWY 13: Climb heading 134° to intercept course 050° to cross JUTES at or above 3000, then on track 039° to cross TNNIS at or above 5000, then on heading 045°, expect vectors after TNNIS, thence....

....maintain 5000 or as assigned by ATC. Expect clearance to filed altitude/flight level within ten (10) minutes after departure.

- NOTE: BAYYS departures expect vectors to BDR/BDR R-054.
- NOTE: COATE departures expect vectors to SAX/SAX R-311.
- NOTE: SHIPP departures expect vectors to JFK/JFK R-139.
- NOTE: WAVEY departures expect vectors to JFK/JFK R-156.
- NOTE: WHITE departures expect vectors to COL/COL R-204.
- NOTE: BIGGY departures expect vectors to SBJ/SBJ R-237.
- NOTE: DIXIE departures expect vectors to COL/COL R-192.
- NOTE: ELIOT departures expect vectors to SAX R-252. ELIOT authorized only for aircraft requesting a final altitude of 14000 or 16000.
- NOTE: GAYEL departures expect vectors to DPK R-320.
- NOTE: GREKI departures expect vectors to CMK R-057.
- NOTE: LANNA departures expect vectors to PTW R-059.
- NOTE: MERIT departures expect vectors to LGA R-055.
- NOTE: NEION departures expect vectors to LGA R-322.
- NOTE: PARKE departures expect vectors to BWZ/BWZ R-250.
- NOTE: HAAYS departures expect vectors to HUU.
- NOTE: ZIMMZ departures expect vectors to SAX R-250. ZIMMZ authorized only for aircraft requesting a final altitude of FL180 and above.
- NOTE: NEWEL departures expect vectors to SAX R-264. NEWEL authorized only for aircraft requesting a final altitude of at or above FL180.

NE-2, 22 FEB 2024 to 21 MAR 2024

NE-2, 22 FEB 2024 to 21 MAR 2024