

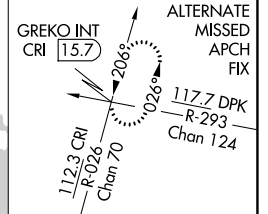
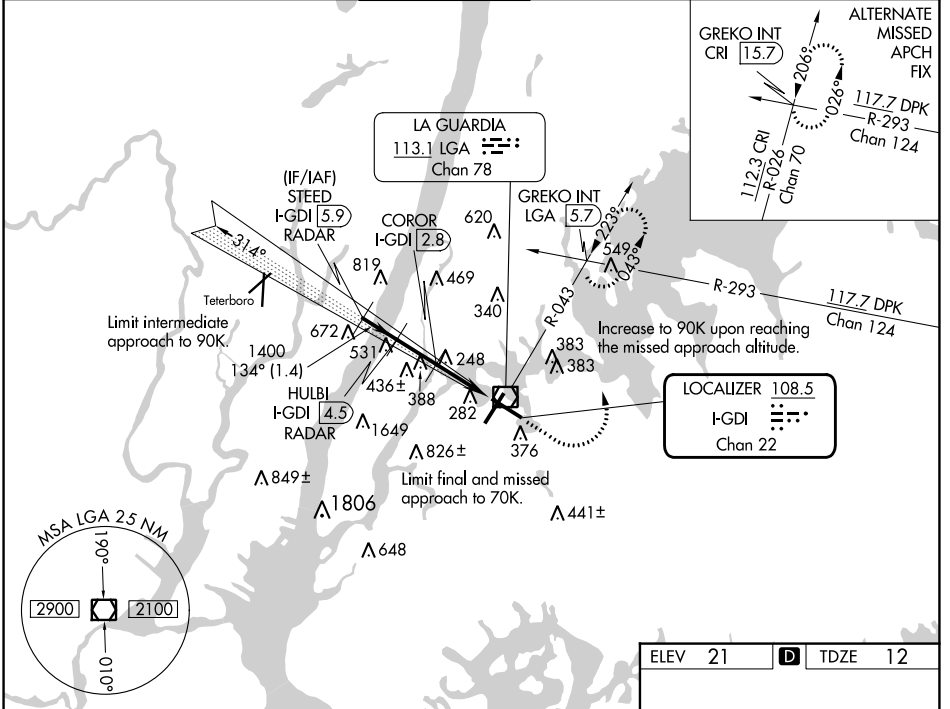
LOC/DME I-GDI <b>108.5</b> Chan <b>22</b>	APP CRS <b>134°</b>	Rwy Idg TDZE Apt Elev	<b>7003</b> <b>12</b> <b>21</b>
---	------------------------	-----------------------------	---------------------------------------

# COPTER ILS or LOC RWY 13

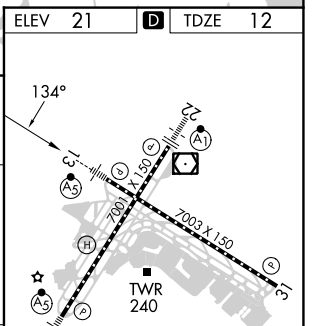
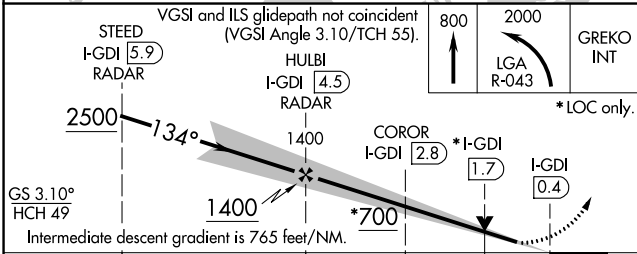
LAGUARDIA (LGA)

RADAR required for procedure entry. DME or RADAR required.	MALSR 	MISSED APPROACH: Climb to 800 then climbing left turn to 2000 on LGA VOR/DME R-043 to GREKO INT/LGA 5.7 DME and hold, continue climb-in-hold to 2000.
---	-----------	---

D-ATIS ARR <b>125.95</b> D-ATIS DEP <b>127.05</b>	NEW YORK APP CON <b>120.8 263.0</b>	LAGUARDIA TOWER <b>118.7 263.0</b>	GND CON <b>121.7 263.0</b>	CLNC DEL <b>135.2</b> <b>121.875 (COPTER)</b>	CPDLC
--	--	---------------------------------------	-------------------------------	---	-------



**LOCALIZER 108.5**  
I-GDI  
Chan 22



CATEGORY	COPTER				
H-ILS 13	212/12 200 (200-¼)				
H-LOC 13	700/12 688 (700-¼)				
COROR FIX MINIMUMS					
H-LOC 13	500/12 488 (500-¼)				
FAF to MAP 4.1 NM					
Knots	45	60	75	90	105
Min:Sec	5:28	4:06	3:17	2:44	2:21

NE-2, 22 FEB 2024 to 21 MAR 2024

NE-2, 22 FEB 2024 to 21 MAR 2024

LOC/DME I-URD <b>110.5</b> Chan <b>42</b>	APP CRS <b>224°</b>	Rwy Idg TDZE <b>12</b> Apt Elev <b>21</b>	<b>7001</b>
---	------------------------	---	-------------

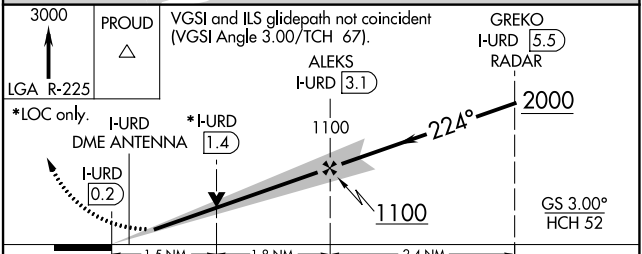
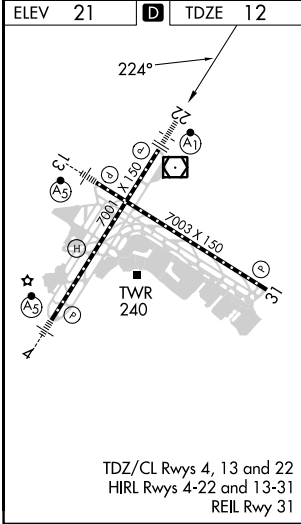
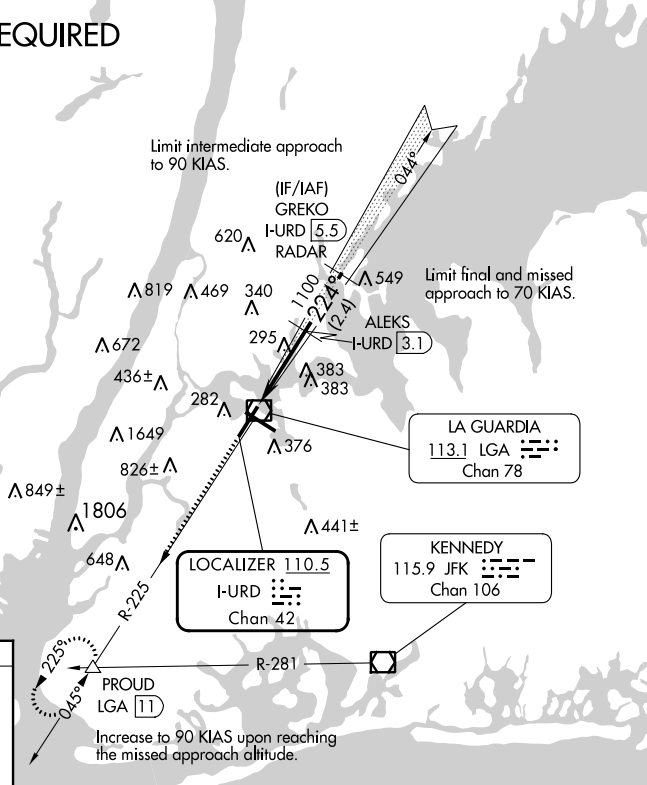
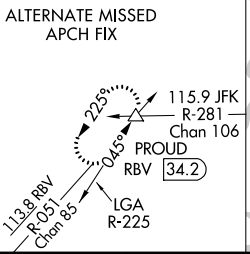
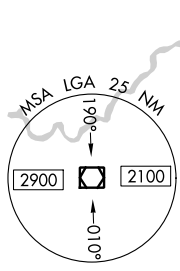
# COPTER ILS or LOC RWY 22

LAGUARDIA (LGA)

<b>DME required.</b>	ALSIF-1 	MISSED APPROACH: Climb to 3000 on LGA VOR/DME R-225 to PROUD/LGA VOR/DME 11 DME and hold.
----------------------	-------------	---

D-ATIS ARR <b>125.95</b> D-ATIS DEP <b>127.05</b>	NEW YORK APP CON <b>120.8 263.0</b>	LAGUARDIA TOWER <b>118.7 263.0</b>	GND CON <b>121.7 263.0</b>	CLNC DEL <b>121.875</b> (COPTER)	CPDLC
--	--	---------------------------------------	-------------------------------	-------------------------------------	-------

## DME and RADAR REQUIRED



CATEGORY	COPTER	
H-ILS 22	212/12	200 (200-1/8)
H-LOC 22	560/12	548 (600-1/8)

NE-2, 22 FEB 2024 to 21 MAR 2024

NE-2, 22 FEB 2024 to 21 MAR 2024

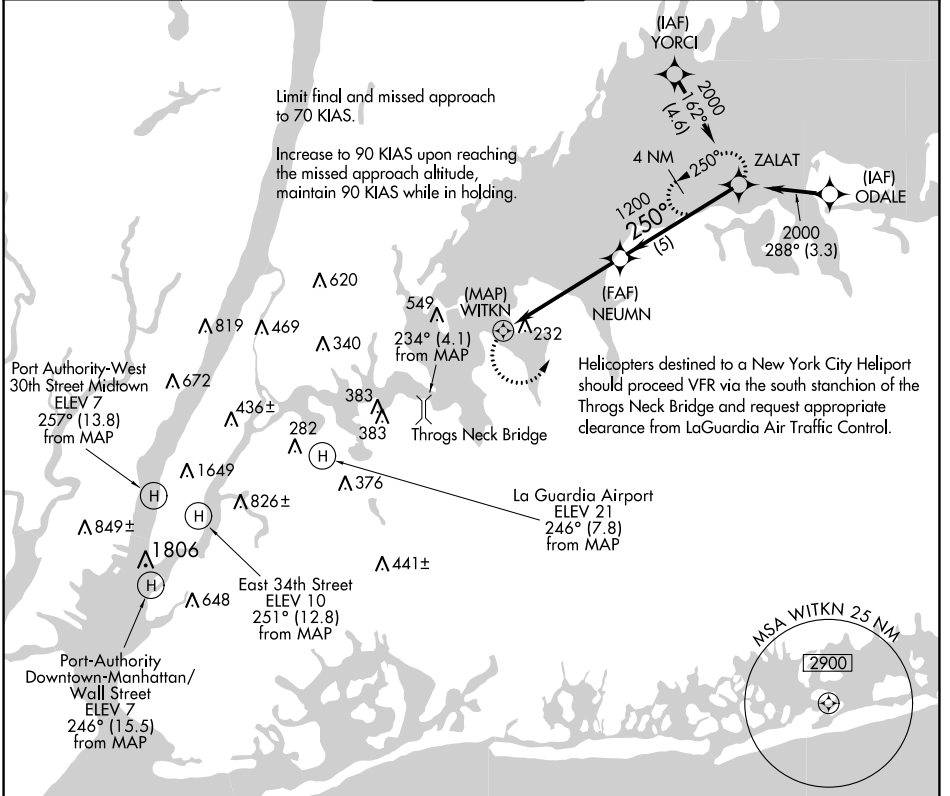
APP CRS <b>250°</b>	Rwy Idg TDZE Apt Elev	N/A N/A N/A
------------------------	-----------------------------	-------------------

# COPTER RNAV (GPS) 250°

LAGUARDIA (L.G.A.)

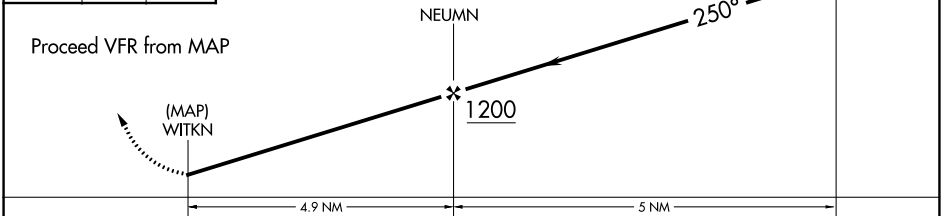
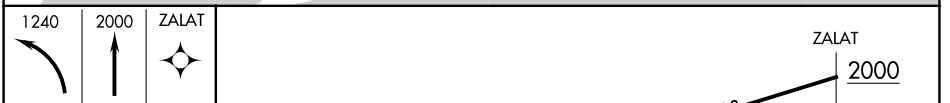
NA	DME/DME RNP-0.3 NA. Use LaGuardia altimeter setting.	MISSED APPROACH: Climbing left turn to 1240, then climb to 2000 direct ZALAT and hold. (Maintain heading 070° until 1240).
----	---	--

D-ATIS ARR <b>125.95</b> D-ATIS DEP <b>127.05</b>	NEW YORK APP CON <b>120.8 263.0</b>	LAGUARDIA TOWER <b>118.7 263.0</b>	GND CON <b>121.7 263.0</b>	CLNC DEL <b>121.875 (COPTER)</b>	CPDLC
--	--	---------------------------------------	-------------------------------	-------------------------------------	-------



NE-2, 22 FEB 2024 to 21 MAR 2024

NE-2, 22 FEB 2024 to 21 MAR 2024



CATEGORY	COPTER
LNAV MDA	520- <sup>3</sup> / <sub>4</sub> 391 (400- <sup>3</sup> / <sub>4</sub> )

LOC/DME I-URD <b>110.5</b> Chan <b>42</b>	APP CRS <b>224°</b>	Rwy Idg TDZE <b>12</b> Apt Elev <b>21</b>	<b>7001</b>
---	------------------------	---	-------------

# ILS RWY 22 (SA CAT I & II) LAGUARDIA (LGA)

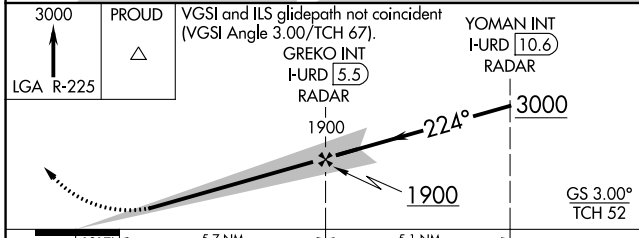
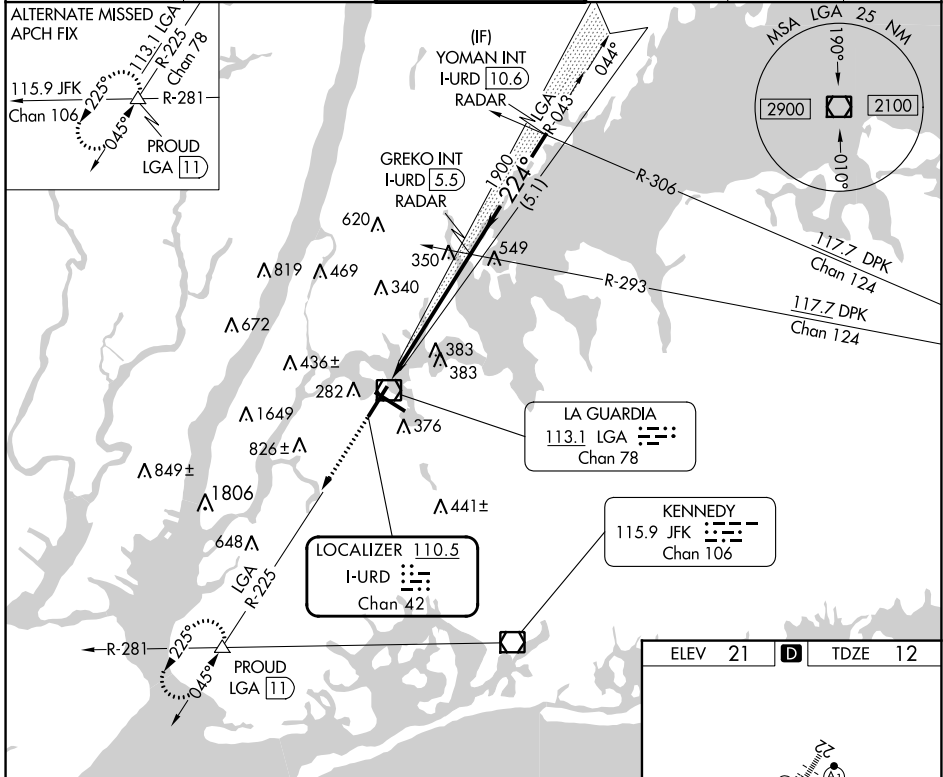
**RADAR required for procedure entry.**

▼ SA CAT I: Requires specific OPSPEC, MSPEC or LOA approval and use of HUD to DH. SA CAT II: Reduced lighting: Requires specific OPSPEC, MSPEC, or LOA approval and use of autoland or HUD to touchdown.

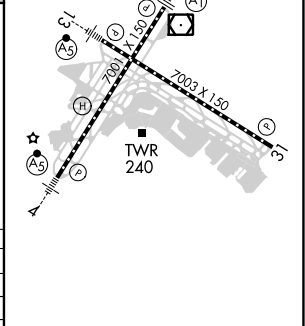
ALSF-1

MISSED APPROACH: Climb to 3000 on LGA VOR/DME R-225 to PROUD INT/LGA11 DME and hold, continue climb-in-hold to 3000.

D-ATIS ARR <b>125.95</b>	NEW YORK APP CON	LAGUARDIA TOWER	GND CON	CLNC DEL	CPDLC
D-ATIS DEP <b>127.05</b>	<b>120.8 263.0</b>	<b>118.7 263.0</b>	<b>121.7 263.0</b>	<b>135.2</b>	



3000	PROUD	VGSI and ILS glidepath not coincident (VGSI Angle 3.00/TCH 67).	YOMAN INT I-URD 10.6
LGA R-225		GREKO INT I-URD 5.5	RADAR
		1900	3000
		GS 3.00°	TCH 52
		1017	5.7 NM
			5.1 NM



CATEGORY	A	B	C	D
S-ILS 22	SA CAT I	RA 162/14	150	DA 162
S-ILS 22	SA CAT II	RA 112/12	100	DA 112

TDZ/CL Rws 4, 13 and 22  
HIRL Rws 4-22 and 13-31  
REIL Rwy 31

NE-2, 22 FEB 2024 to 21 MAR 2024

NE-2, 22 FEB 2024 to 21 MAR 2024

LOC/DME I-GDI <b>108.5</b> Chan <b>22</b>	APP CRS <b>134°</b>	Rwy Idg TDZE <b>12</b> Apt Elev <b>21</b>	<b>7003</b>
---	------------------------	---	-------------

# ILS or LOC RWY 13

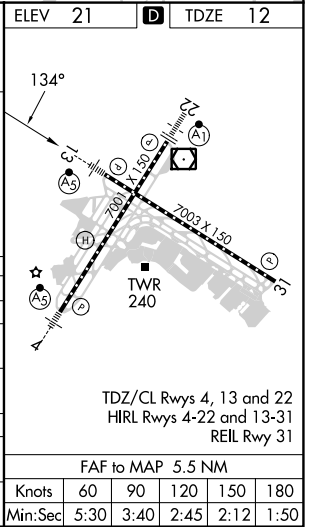
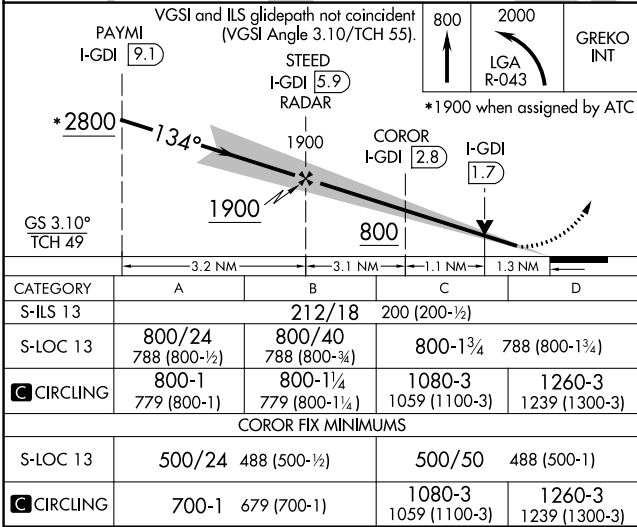
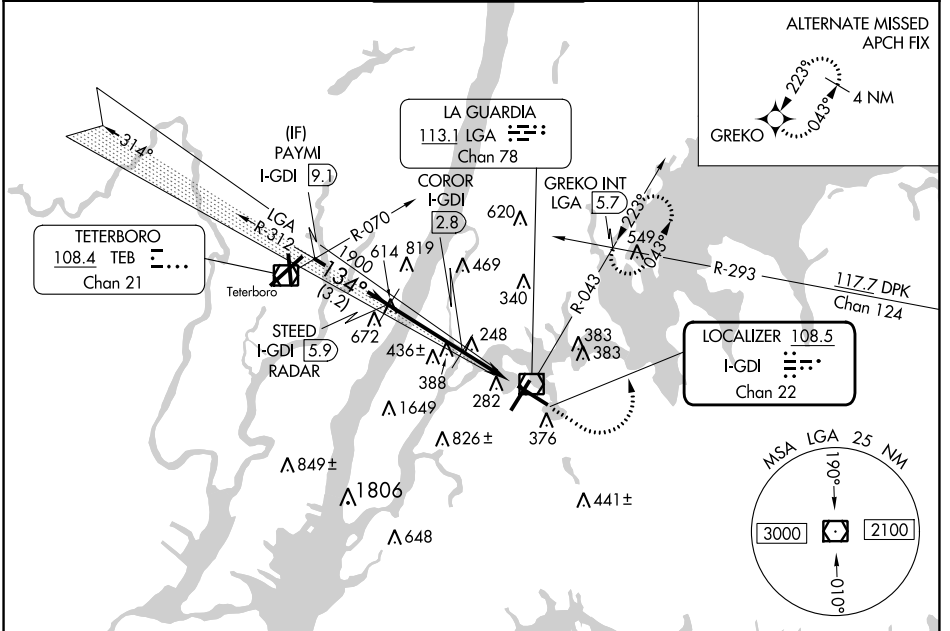
LAGUARDIA (LGA)

Radar required for procedure entry. DME or RADAR required for LOC only.

**▼** For inop ALS, increase S-LOC 13 Cats C/D visibility to 2½ SM.  
**▲** Circling NA northwest of Rwy 4 and southwest of Rwy 13.

MALSR MISSED APPROACH: Climb to 800 then climbing left turn to 2000 on LGA VOR/DME R-043 to GREKO INT/LGA 5.7 DME and hold, continue climb-in-hold to 2000.

D-ATIS ARR <b>125.95</b> D-ATIS DEP <b>127.05</b>	NEW YORK APP CON <b>120.8 263.0</b>	LAGUARDIA TOWER <b>118.7 263.0</b>	GND CON <b>121.7 263.0</b>	CLNC DEL <b>135.2</b>	CPDLC
--	--	---------------------------------------	-------------------------------	--------------------------	-------



# LAGUARDIA (LGA)

## ILS or LOC RWY 13

CATEGORY		A	B	C	D
S-ILS 13		212/18 200 (200-½)			
S-LOC 13		800/24 788 (800-½)	800/40 788 (800-¾)	800-1¼ 1059 (1100-3)	788 (800-1¼)
CIRCLING		800-1 779 (800-1)	800-1¼ 779 (800-1¼)	1080-3 1059 (1100-3)	1260-3 1239 (1300-3)
COROR FIX MINIMUMS					
S-LOC 13		500/24 488 (500-½)	500/50 488 (500-1)		
CIRCLING		700-1 679 (700-1)	1080-3 1239 (1300-3)		
FAF to MAP 5.5 NM					
Knots		60	90	120	150 180
Min:Sec		5:30	3:40	2:45	2:12 1:50

NE-2, 22 FEB 2024 to 21 MAR 2024

NE-2, 22 FEB 2024 to 21 MAR 2024

LOC/DME I-URD <b>110.5</b> Chan <b>42</b>	APP CRS <b>224°</b>	Rwy Idg <b>7001</b> TDZE <b>12</b> Apt Elev <b>21</b>
---	------------------------	---

# ILS or LOC RWY 22

LAGUARDIA (LGA)

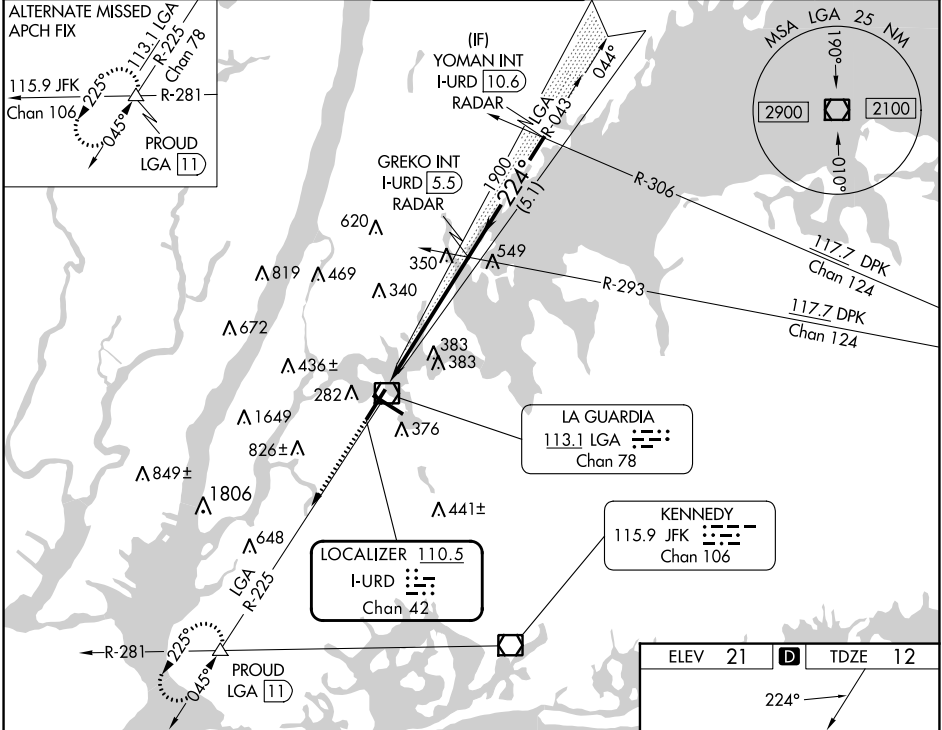
RADAR required for procedure entry. RADAR or DME required for LOC only.

**⚠** Circling NA northwest of Rwy 4 and southwest of Rwy 13.

ALSF-1

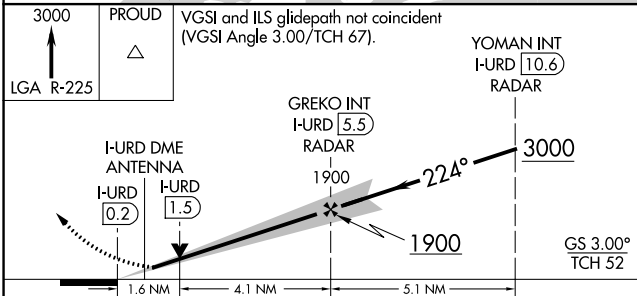
MISSED APPROACH: Climb to 3000 on LGA VOR/DME R-225 to PROUD INT/LGA 11 DME and hold, continue climb-in-hold to 3000.

D-ATIS ARR <b>125.95</b>	NEW YORK APP CON <b>120.8 263.0</b>	LAGUARDIA TOWER <b>118.7 263.0</b>	GND CON <b>121.7 263.0</b>	CLNC DEL <b>135.2</b>	CPDLC
D-ATIS DEP <b>127.05</b>					



NE-2, 22 FEB 2024 to 21 MAR 2024

NE-2, 22 FEB 2024 to 21 MAR 2024



CATEGORY	A	B	C	D
S-ILS 22	212/18 200 (200-½)			
S-LOC 22	600/24 588 (600-½)		600-1¼ 588 (600-1¼)	
<b>C</b> CIRCLING	700-1 679 (700-1)		1080-3 1260-3 1059 (1100-3) 1239 (1300-3)	

ELEV 21	<b>D</b>	TDZE 12
---------	----------	---------

TDZ/CL Rws 4, 13 and 22  
HIRL Rws 4-22 and 13-31  
REIL Rwy 31

FAF to MAP 5.7 NM

Knots	60	90	120	150	180
Min:Sec	5:42	3:48	2:51	2:17	1:54

LOC/DME I-LGA	APP CRS	Rwy Idg	<b>7001</b>
<b>110.5</b>	<b>044°</b>	TDZE	<b>21</b>
Chan <b>42</b>		Apt Elev	<b>21</b>

# ILS or LOC RWY 4

LAGUARDIA (LGA)

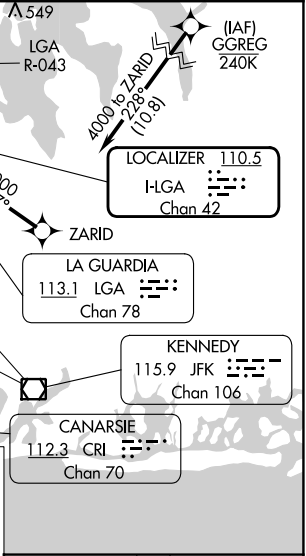
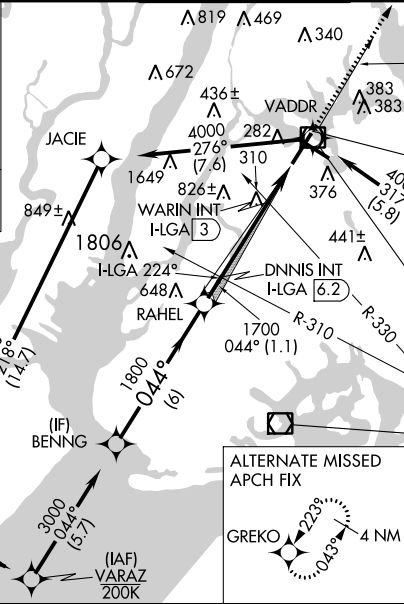
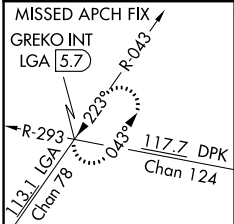
RNP APCH - GPS.

**▼** Rwy 4 helicopter visibility reduction below RVR 5000 NA. Inop table does not apply to S-ILS 4 all Cats, S-LOC 4 Cats A and B and WARIN fix minimums Cats A and B.  
**▲** For inop ALS increase S-ILS 4 all Cats visibility to RVR 4500. Going below glidepath may not provide obstacle clearance inside DA. Crossing Rwy threshold below charted TCH may not provide required visual area obstacle clearance. DME from LGA VOR/DME. Autopilot couple approach NA. Circling NA northwest of Rwy 4 and southwest of Rwy 13.  
 \* RVR 2400 authorized with use of FD or HUD to DA.



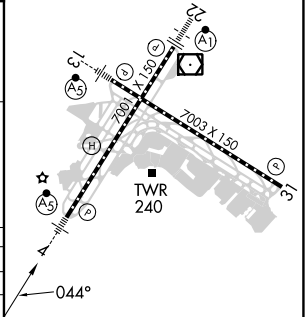
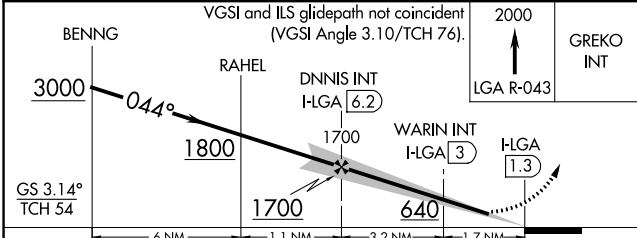
**MISSED APPROACH:**  
 Climb to 2000 on LGA VOR/DME R-043 to GREKO INT/LGA 5.7 DME and hold, continue climb-in-hold to 2000.

D-ATIS ARR <b>125.95</b>	NEW YORK APP CON	LAGUARDIA TOWER	GND CON	CLNC DEL	CPDLC
D-ATIS DEP <b>127.05</b>	<b>120.8 263.0</b>	<b>118.7 263.0</b>	<b>121.7 263.0</b>	<b>135.2</b>	



NE-2, 22 FEB 2024 to 21 MAR 2024

NE-2, 22 FEB 2024 to 21 MAR 2024



CATEGORY	A	B	C	D
S-ILS 4 *	283/40 262 (300-¾)			
S-LOC 4	640/50	619 (700-1)	640-1⅜	619 (700-1⅜)
<b>C</b> CIRCLING	680-1	659 (700-1)	700-2	760-2¼
			679 (700-2)	739 (800-2¼)
WARIN FIX MINIMUMS (DUAL VOR RECEIVERS OR DME REQUIRED)				
S-LOC 4	560/50	539 (600-1)	560/55	539 (600-1)
<b>C</b> CIRCLING	680-1	659 (700-1)	700-2	760-2¼
			679 (700-2)	739 (800-2¼)

ELEV 21   <b>D</b> TDZE 21				
FD/CL Rws 4, 13 and 22 HIRL Rws 4-22 and 13-31 REIL Rwy 31				
FAF to MAP 4.9 NM				
Knots	60	90	120	150 180
Min:Sec	4:54	3:16	2:27	1:58 1:38

LOC/DME I-PZV <b>108.5</b> Chan <b>22</b>	APP CRS <b>316°</b>	Rwy Idg <b>7003</b> TDZE <b>7</b> Apt Elev <b>21</b>
---	------------------------	--

# LOC RWY 31

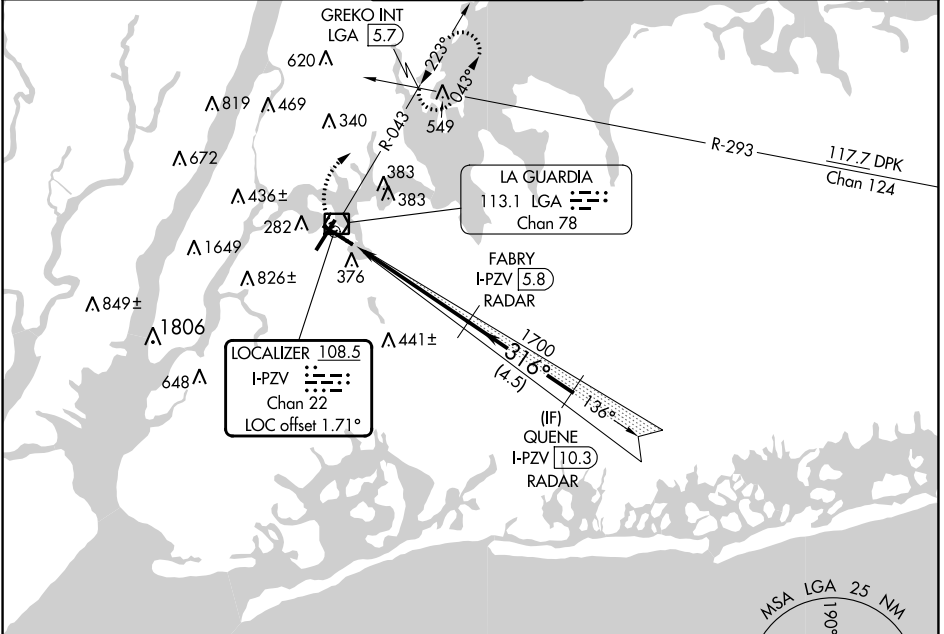
LAGUARDIA (LGA)

RADAR required for procedure entry. DME required.

▼ Rwy 31 helicopter visibility reduction below RVR 4000 NA.  
▲ Circling NA northwest of Rwy 4 and southwest of Rwy 13.

MISSED APPROACH: Climbing right turn to 2000 on LGA VOR/DME R-043 to GREKO INT/LGA 5.7 DME and hold, continue climb-in-hold to 2000.

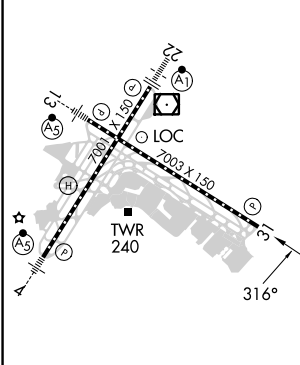
D-ATIS ARR <b>125.95</b> D-ATIS DEP <b>127.05</b>	NEW YORK APP CON <b>120.8 263.0</b>	LAGUARDIA TOWER <b>118.7 263.0</b>	GND CON <b>121.7 263.0</b>	CLNC DEL <b>135.2</b>	CPDLC
--	--	---------------------------------------	-------------------------------	--------------------------	-------



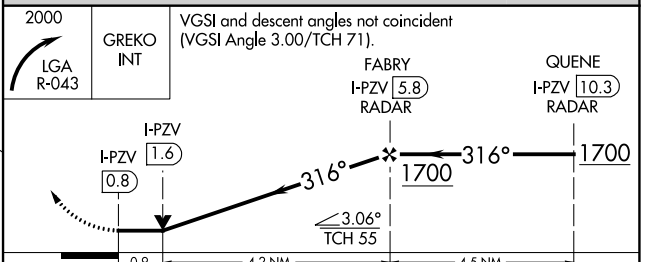
NE-2, 22 FEB 2024 to 21 MAR 2024

NE-2, 22 FEB 2024 to 21 MAR 2024

ELEV 21	<b>D</b>	TDZE 7
---------	----------	--------



TDZ/CL Rws 4, 13 and 22  
HIRL Rws 4-22 and 13-31  
REIL Rwy 31



CATEGORY	A	B	C	D
S-31	600/55	593 (600-1)	600-1¾	593 (600-1¾)
<b>C</b> CIRCLING	700-1	679 (700-1)	1080-3 1059 (1100-3)	1260-3 1239 (1300-3)

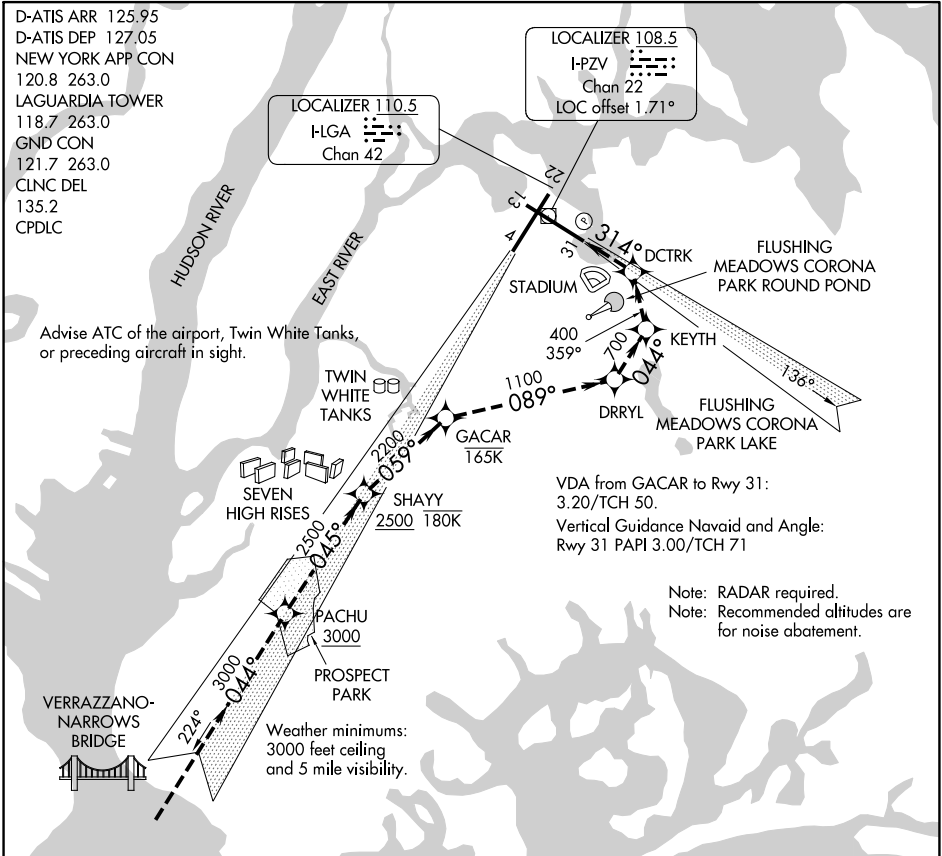


# PARK VISUAL RWY 31

D-ATIS ARR 125.95  
 D-ATIS DEP 127.05  
 NEW YORK APP CON  
 120.8 263.0  
 LAGUARDIA TOWER  
 118.7 263.0  
 GND CON  
 121.7 263.0  
 CLNC DEL  
 135.2  
 CPDLC

LOCALIZER 110.5  
 H-LGA  
 Chan 42

LOCALIZER 108.5  
 I-PZV  
 Chan 22  
 LOC offset 1.71°



Advise ATC of the airport, Twin White Tanks, or preceding aircraft in sight.

VDA from GACAR to Rwy 31:  
 3.20/TCH 50.  
 Vertical Guidance Navaid and Angle:  
 Rwy 31 PAPI 3.00/TCH 71

Note: RADAR required.  
 Note: Recommended altitudes are for noise abatement.

Weather minimums:  
 3000 feet ceiling  
 and 5 mile visibility.

NE-2, 22 FEB 2024 to 21 MAR 2024

NE-2, 22 FEB 2024 to 21 MAR 2024

1 NM	2	3	4	5	6	7	8	9	10	11	12	13	14	15	16
------	---	---	---	---	---	---	---	---	----	----	----	----	----	----	----

When cleared for the PARK VISUAL RWY 31 aircraft may proceed via the RNAV (GPS) X RWY 31 approach to Rwy 31 and/or cross PACHU at 3000 or above and tracking 045° to SHAYY at or below 180K (Seven High Rises) at 2500 or above and turn right tracking 059° to GACAR at or below 165K (Twin White Tanks) then turn right tracking 089° to DRRYL (Flushing Meadows Corona Park Lake) then turn left tracking 044° to KEYTH (Flushing Meadows Corona Park Round Pond) then left turn tracking 359° to DCTRK (stadium) then left turn direct RWY 31.

# PARK VISUAL RWY 31

40°47'N-73°52'W

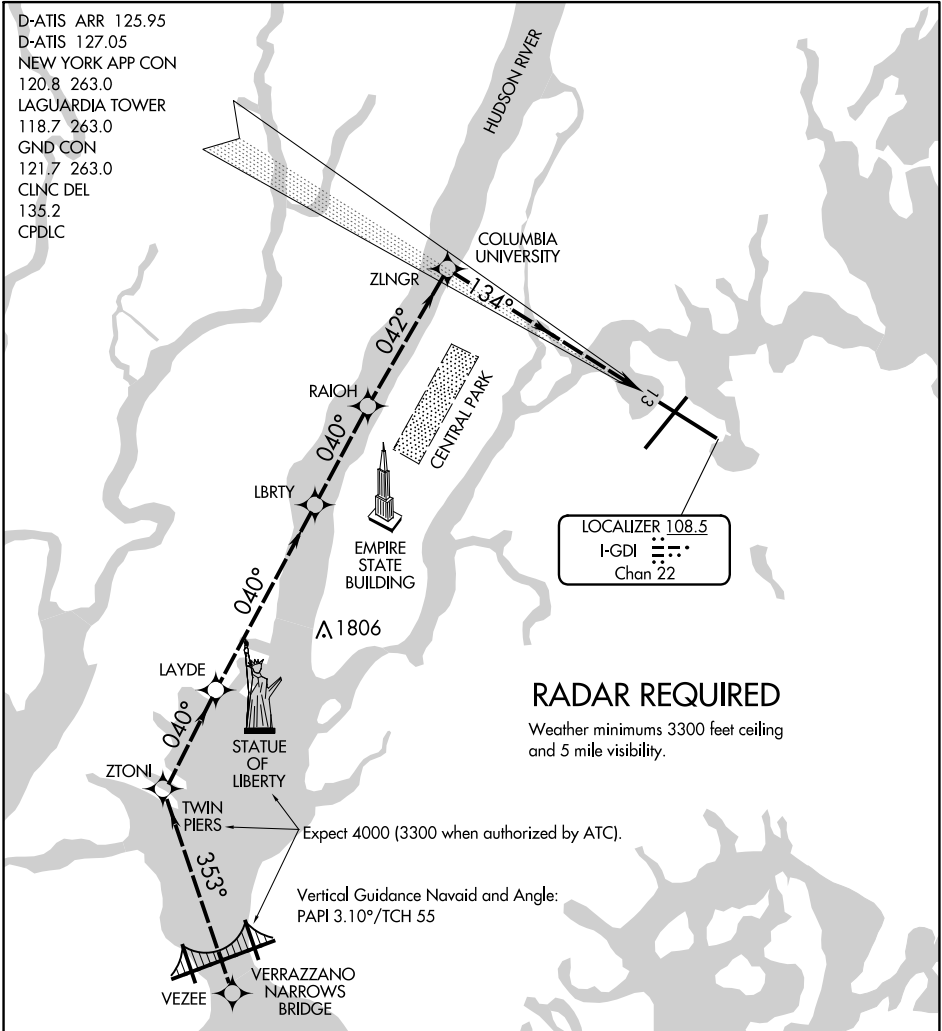
NEW YORK, NEW YORK  
LAGUARDIA (LGA)

# RIVER VISUAL RWY 13

AL-289 (FAA)

LAGUARDIA (LGA)  
NEW YORK, NEW YORK

D-ATIS ARR 125.95  
 D-ATIS 127.05  
 NEW YORK APP CON  
 120.8 263.0  
 LAGUARDIA TOWER  
 118.7 263.0  
 GND CON  
 121.7 263.0  
 CLNC DEL  
 135.2  
 CPDLC



NE-2, 22 FEB 2024 to 21 MAR 2024

NE-2, 22 FEB 2024 to 21 MAR 2024

1 NM	2	3	4	5	6	7	8	9	10	11	12	13	14	15	16
------	---	---	---	---	---	---	---	---	----	----	----	----	----	----	----

## RIVER VISUAL RWY 13 APPROACH

When cleared for the RIVER VISUAL RWY 13 approach, remain over the Hudson River until starting the turn to final approach north of Central Park. Expect 4000 until abeam Statue of Liberty (3300 when authorized by ATC).

# RIVER VISUAL RWY 13

40°47'N-73°52'W

NEW YORK, NEW YORK  
LAGUARDIA (LGA)

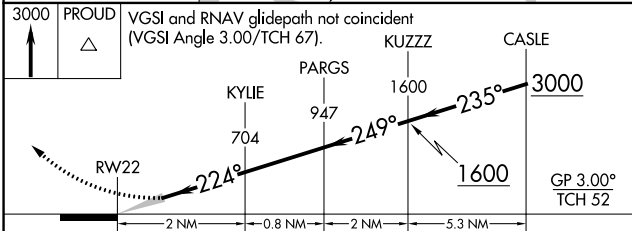
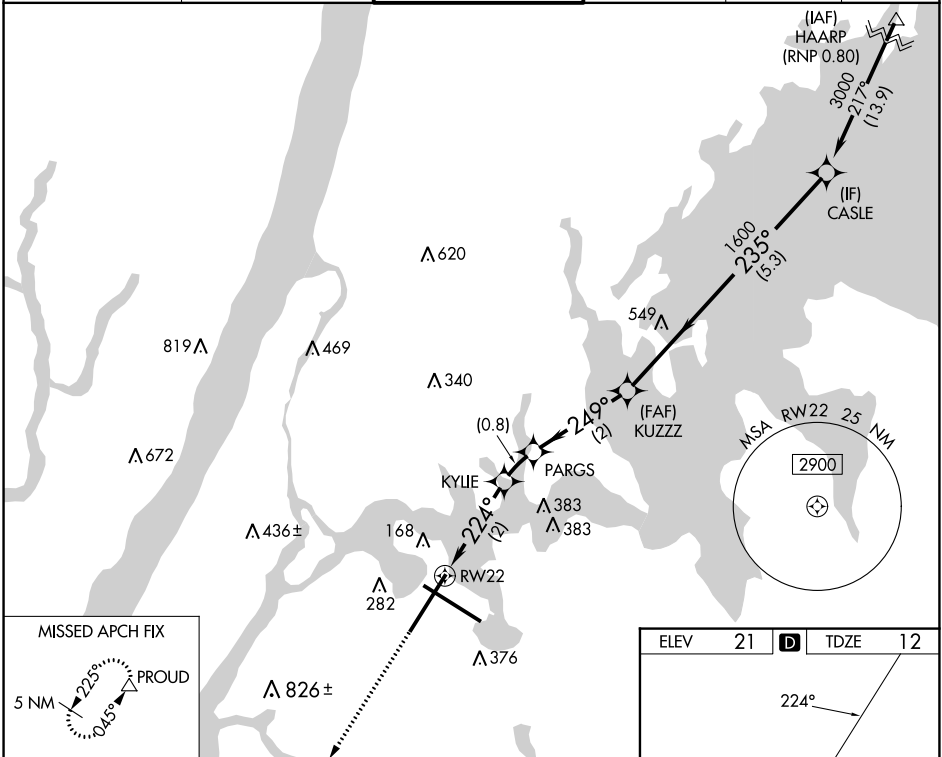
APP CRS	Rwy Idg	<b>7001</b>
<b>224°</b>	TDZE	<b>12</b>
	Apt Elev	<b>21</b>

# RNAV (RNP) Z RWY 22

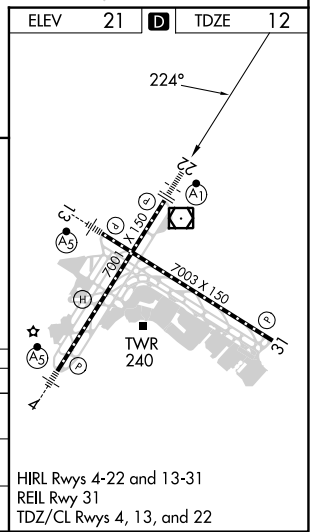
LAGUARDIA (LGA)

RNP AR APCH - GPS. RF required.		ALSF-1 	MISSED APPROACH: Climb to 3000 direct PROUD and hold, continue climb-in-hold to 3000. *Missed approach requires minimum climb of 397 feet per NM to 560.		
NA For uncompensated Baro-VNAV systems, procedure NA below -11°C or above 54°C. For inop ALS, increase RNP 0.30 DA* visibility to RVR 5500.					

D-ATIS ARR	<b>125.95</b>	NEW YORK APP CON	<b>120.8 263.0</b>	LAGUARDIA TOWER	<b>118.7 263.0</b>	GND CON	<b>121.7 263.0</b>	CLNC DEL	<b>135.2</b>	CPDLC
D-ATIS DEP	<b>127.05</b>									



CATEGORY	A	B	C	D
RNP 0.30 DA*		384/35	372 (400- $\frac{2}{3}$ )	
RNP 0.30 DA		445/40	433 (500- $\frac{2}{3}$ )	



HIRL Rwy 4-22 and 13-31  
 REIL Rwy 31  
 TDZ/CL Rwy 4, 13, and 22

**AUTHORIZATION REQUIRED**

NE-2, 22 FEB 2024 to 21 MAR 2024

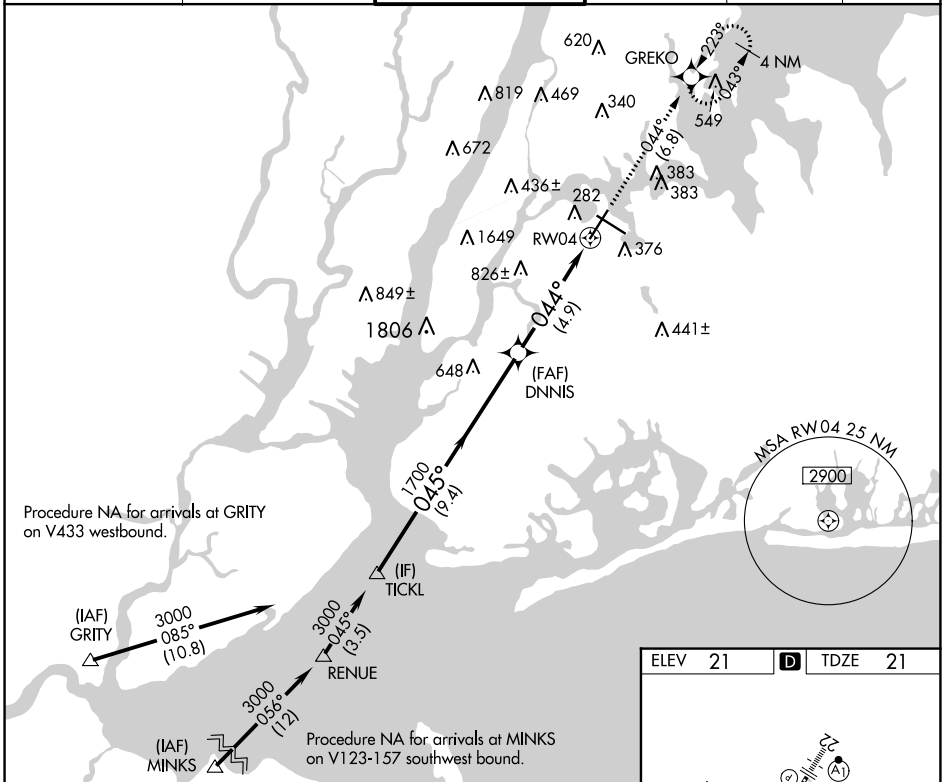
NE-2, 22 FEB 2024 to 21 MAR 2024

APP CRS	Rwy Idg	<b>7001</b>
<b>044°</b>	TDZE	<b>21</b>
	Apt Elev	<b>21</b>

# RNAV (RNP) Z RWY 4

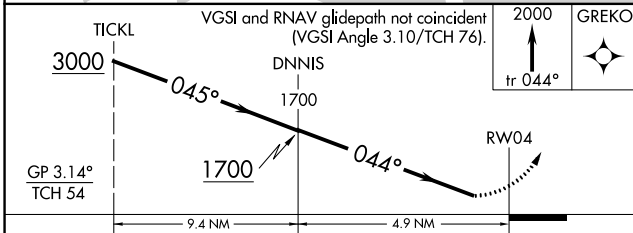
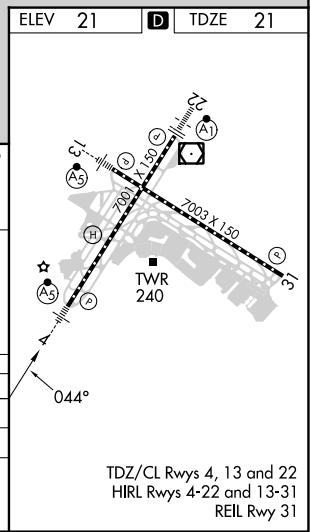
LAGUARDIA (LGA)

RNP AR APCH - GPS.		MALSR		MISSED APPROACH: Climb to 2000 on track 044° to GREKO and hold, continue climb-in-hold to 2000.	
<p>▼ For uncompensated Baro-VNAV systems, procedure NA below -12°C or above 54°C. For inop ALS, increase RNP 0.18 visibility to 1 3/8 SM.</p>					
D-ATIS ARR	<b>125.95</b>	NEW YORK APP CON	<b>120.8 263.0</b>	LAGUARDIA TOWER	<b>118.7 263.0</b>
D-ATIS DEP	<b>127.05</b>			GND CON	<b>121.7 263.0</b>
				CLNC DEL	<b>135.2</b>
				CPDLC	



Procedure NA for arrivals at GRITY on V433 westbound.

Procedure NA for arrivals at MINKS on V123-157 southwest bound.



CATEGORY	A	B	C	D
RNP 0.18 DA		482/50	461 (500-1)	
RNP 0.30 DA		610-1 1/4	589 (600-1 1/4)	

**AUTHORIZATION REQUIRED**

TDZ/CL Rws 4, 13 and 22  
HIRL Rws 4-22 and 13-31  
REIL Rwy 31

NE-2, 22 FEB 2024 to 21 MAR 2024

NE-2, 22 FEB 2024 to 21 MAR 2024

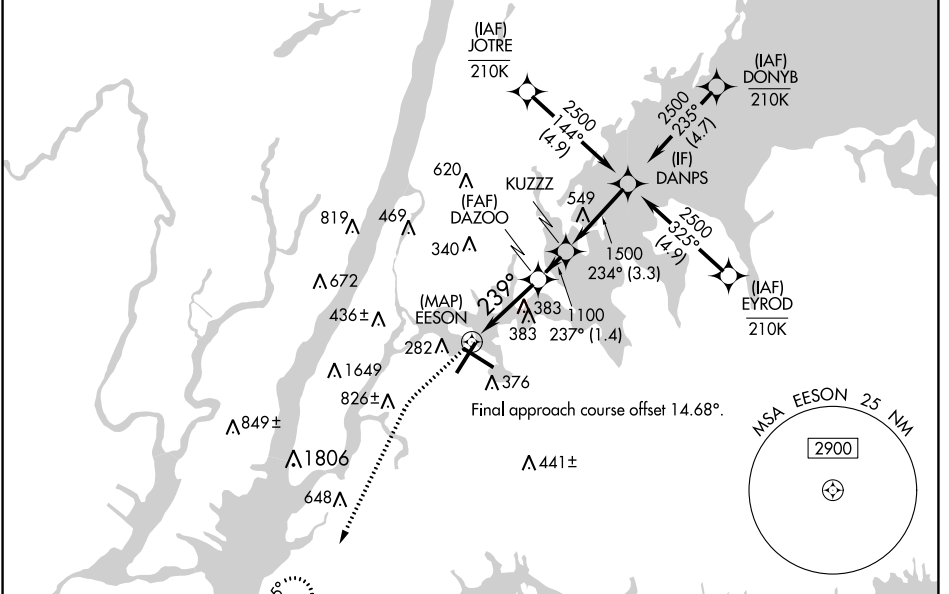
APP CRS	Rwy Idg	<b>7001</b>
<b>239°</b>	TDZE	<b>12</b>
	Apt Elev	<b>21</b>

# RNAV (GPS) X RWY 22

LAGUARDIA (LGA)

RNP APCH - GPS.		ALSF-1 	MISSED APPROACH: Climb to 500 then climbing left turn to 3000 direct PROUD and hold, continue climb-in-hold to 3000.
Circling NA northwest of Rwy 4 and southwest of Rwy 13. For uncompensated Baro-VNAV systems, LNAV/VNAV NA below -11°C or above 54°C. For inop ALS, increase LNAV/VNAV all Cats visibility to RVR 5500; increase LNAV Cats C/D visibility to 1/2 SM.			

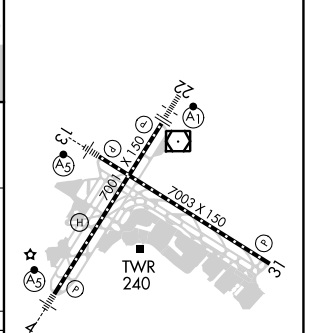
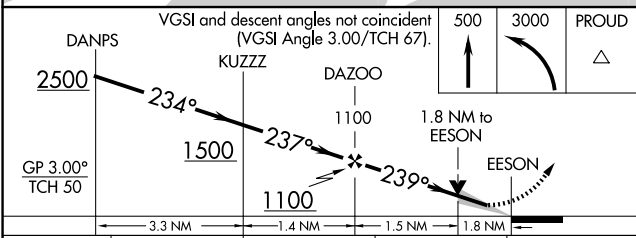
D-ATIS ARR	<b>125.95</b>	NEW YORK APP CON	<b>120.8 263.0</b>	LAGUARDIA TOWER	<b>118.7 263.0</b>	GND CON	<b>121.7 263.0</b>	CLNC DEL	<b>135.2</b>	CPDLC
D-ATIS DEP	<b>127.05</b>									



NE-2, 22 FEB 2024 to 21 MAR 2024

NE-2, 22 FEB 2024 to 21 MAR 2024

ELEV	<b>21</b>	<b>D</b> TDZE	<b>12</b>
------	-----------	---------------	-----------



CATEGORY	A	B	C	D
LNAV/VNAV DA		381/35	369 (400-3%)	
LNAV MDA	640/24	628 (700-1/2)	640-1 3/8	628 (700-1 3/8)
<b>C</b> CIRCLING	680-1	659 (700-1)	700-2 679 (700-2)	760-2 1/4 739 (800-2 1/4)

TDZ/CL Rws 4, 13 and 22  
 HIRL Rws 4-22 and 13-31  
 REIL Rwy 31

APP CRS	Rwy Idg	<b>7003</b>
<b>089°</b>	TDZE	<b>7</b>
	Apt Elev	<b>21</b>

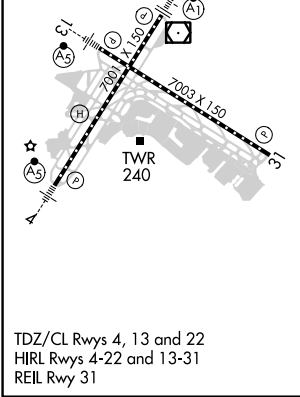
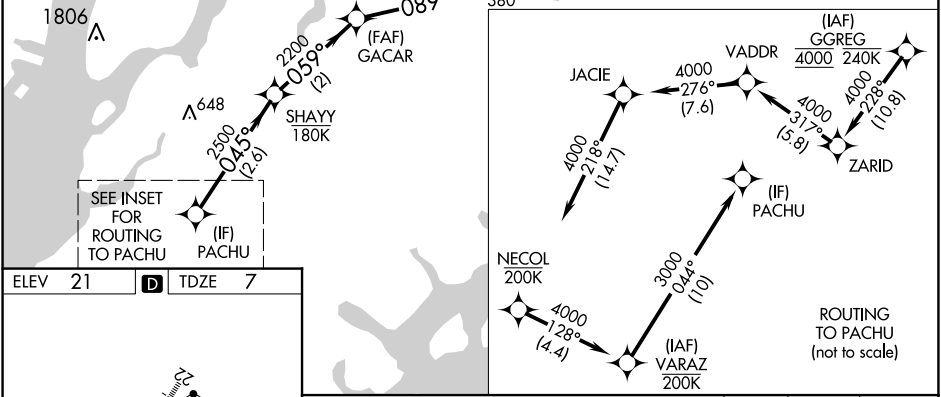
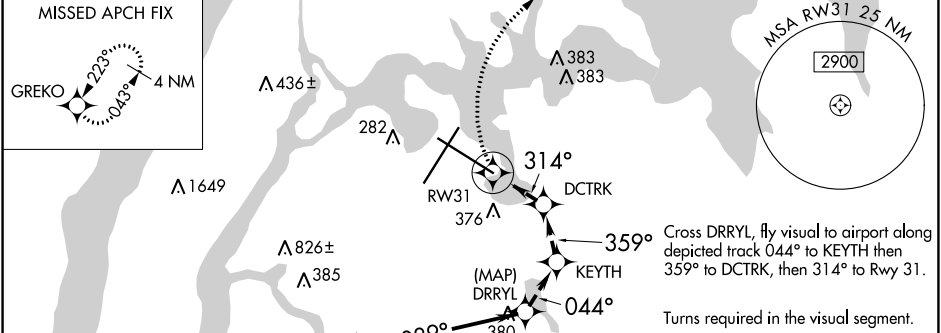
# RNAV (GPS) X RWY 31

LAGUARDIA (LGA)

RNP APCH - GPS.  
 RADAR required.  
 ▼ Rwy 31 helicopter visibility reduction below 3/4 SM NA.  
 ▲

MISSED APPROACH: (Do not exceed 165K until Rwy 31 then do not exceed 210K until GREKO). Climb to 2000 on FMS lateral path to RW31, then climbing right turn direct GREKO and hold. If unable to follow the FMS lateral path, turn left heading 025° and climb to 2000 direct GREKO and hold.

D-ATIS ARR	<b>125.95</b>	NEW YORK APP CON	<b>120.8 263.0</b>	LAGUARDIA TOWER	<b>118.7 263.0</b>	GND CON	<b>121.7 263.0</b>	CLNC DEL	<b>135.2</b>	CPDLC
D-ATIS DEP	<b>127.05</b>									

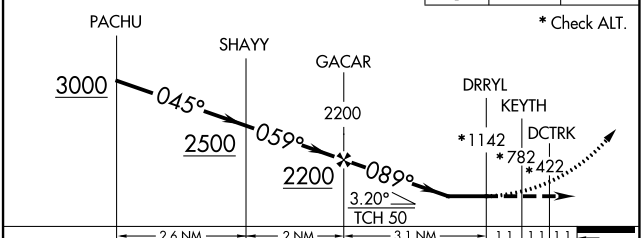


VGSI and descent angles not coincident (VGSI Angle 3.00/TCH 71).

2000

GREKO

\* Check ALT.



CATEGORY	A	B	C	D
LNAV MDA		1160-4	1153 (1200-4)	

NE-2, 22 FEB 2024 to 21 MAR 2024

NE-2, 22 FEB 2024 to 21 MAR 2024

APP CRS	Rwy Idg	<b>7003</b>
<b>134°</b>	TDZE	<b>12</b>
	Apt Elev	<b>21</b>

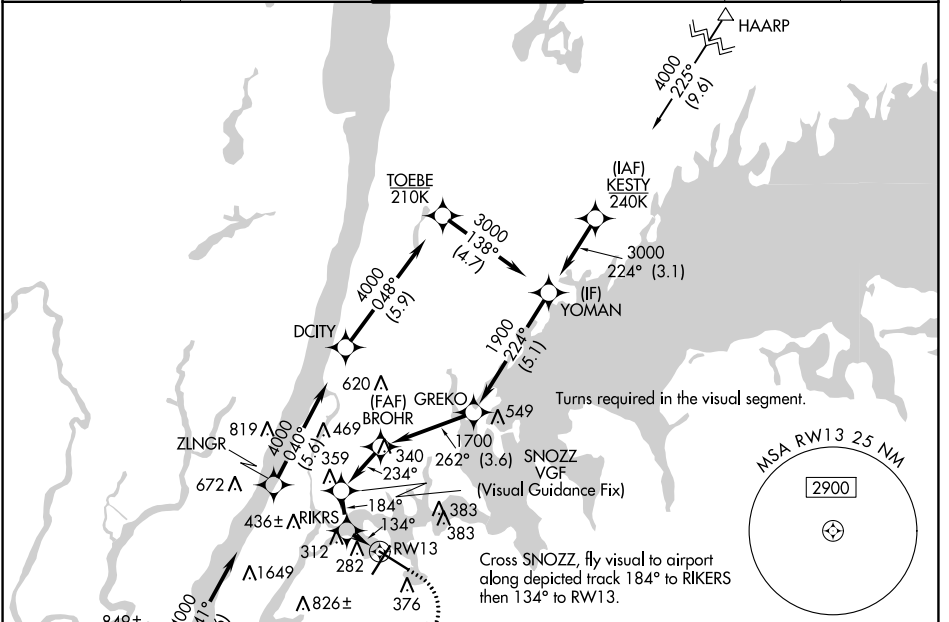
# RNAV (GPS) Y RWY 13

LAGUARDIA (LGA)

RNP APCH - GPS.
RADAR required.

**MALSRR**  
  
 MISSED APPROACH: (Do not exceed 185K until Rwy 13 then do not exceed 210K until PROUD) Climb to 2000 on the extended visual approach track to Rwy 13, then climbing right turn to 3000 direct PROUD and hold.

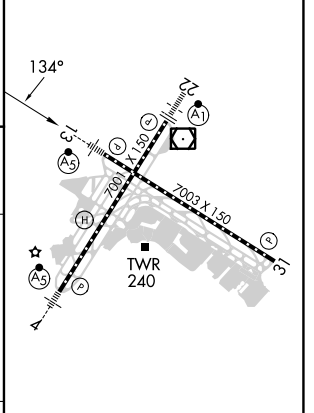
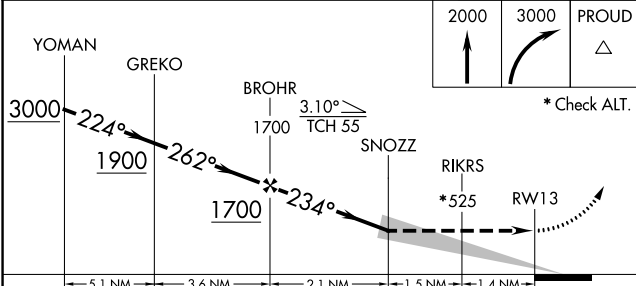
D-ATIS ARR <b>125.95</b>	NEW YORK APP CON	LAGUARDIA TOWER	GND CON	CLNC DEL	CPDLC
D-ATIS DEP <b>127.05</b>	<b>120.8 263.0</b>	<b>118.7 263.0</b>	<b>121.7 263.0</b>	<b>135.2</b>	



NE-2, 22 FEB 2024 to 21 MAR 2024

NE-2, 22 FEB 2024 to 21 MAR 2024

ELEV 21	<b>D</b> TDZE 12
---------	------------------



CATEGORY	A	B	C	D
LNVA MDA		1020-3	1008 (1000-3)	

TDZ/CL Rws 4, 13 and 22  
HIRL Rws 4-22 and 13-31  
REIL Rwy 31

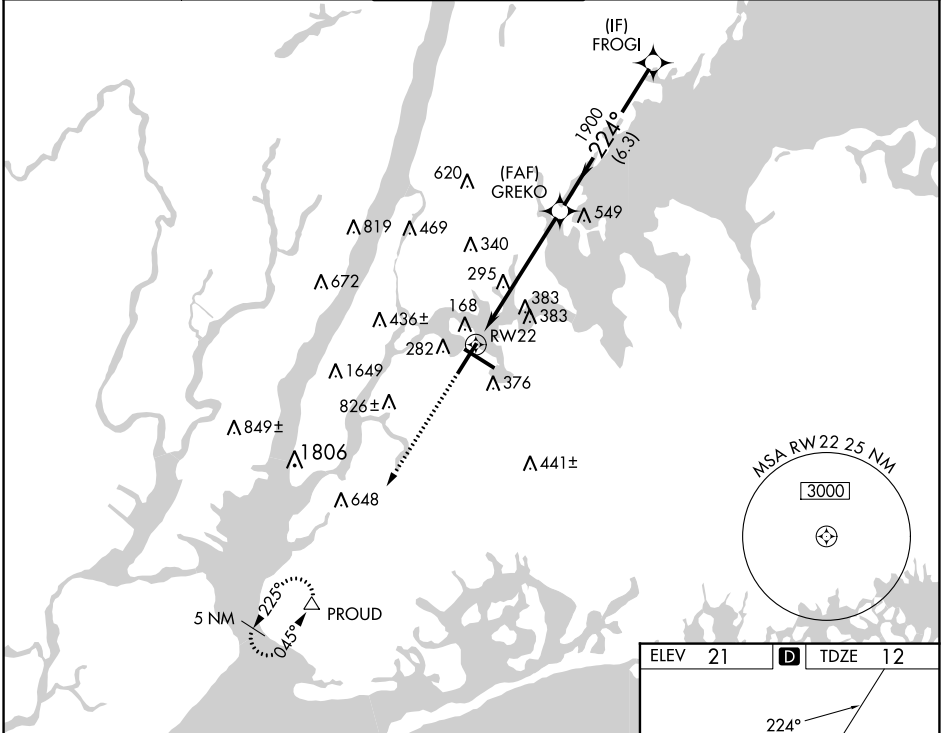
WAAS CH <b>70318</b> <b>W22A</b>	APP CRS <b>224°</b>	Rwy Idg TDZE <b>12</b> Apt Elev <b>21</b>	<b>7001</b>
--	------------------------	---	-------------

# RNAV (GPS) Y RWY 22

LAGUARDIA (LGA)

RNP APCH - GPS.		ALSF-1		MISSED APPROACH: Climb to 3000 direct PROUD and hold, continue climb-in-hold to 3000.	
<p>▼ For uncompensated Baro-VNAV systems, LNAV/VNAV NA below -11°C or above 54°C. Circling NA northwest of Rwy 4 and southwest of Rwy 13.</p>					

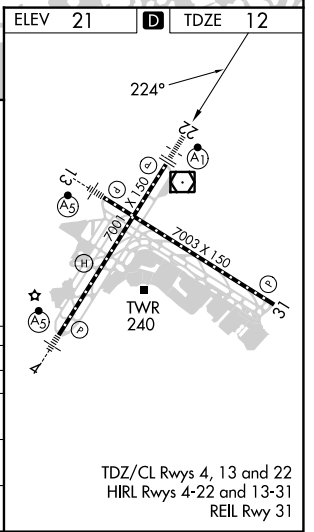
D-ATIS ARR <b>125.95</b>	NEW YORK APP CON D-ATIS DEP <b>127.05</b>	<b>120.8 263.0</b>	LAGUARDIA TOWER <b>118.7 263.0</b>	GND CON <b>121.7 263.0</b>	CLNC DEL <b>135.2</b>	CPDLC
--------------------------	--	--------------------	---------------------------------------	-------------------------------	--------------------------	-------



NE-2, 22 FEB 2024 to 21 MAR 2024

NE-2, 22 FEB 2024 to 21 MAR 2024

3000	PROUD	VGSI and RNAV glidepath not coincident (VGSI Angle 3.00/TCH 67).		FROGI
↑	△			
		<p>GREKO 1900 3000</p> <p>224°</p> <p>1900</p> <p>GP 3.00° TCH 52</p>		
CATEGORY	A	B	C	D
LPV DA	262/24		250 (300-½)	
LNAV/VNAV DA	527/60		515 (600-1¼)	
LNAV MDA	580/24	568 (600-½)	580/50 568 (600-1)	580/60 568 (600-1¼)
CIRCLING	700-1	679 (700-1)	1080-3 1059 (1100-3)	1260-3 1239 (1300-3)





APP CRS	Rwy Idg	<b>7003</b>
<b>313°</b>	TDZE	<b>7</b>
	Apt Elev	<b>21</b>

# RNAV (GPS) Y RWY 31

LAGUARDIA (LGA)

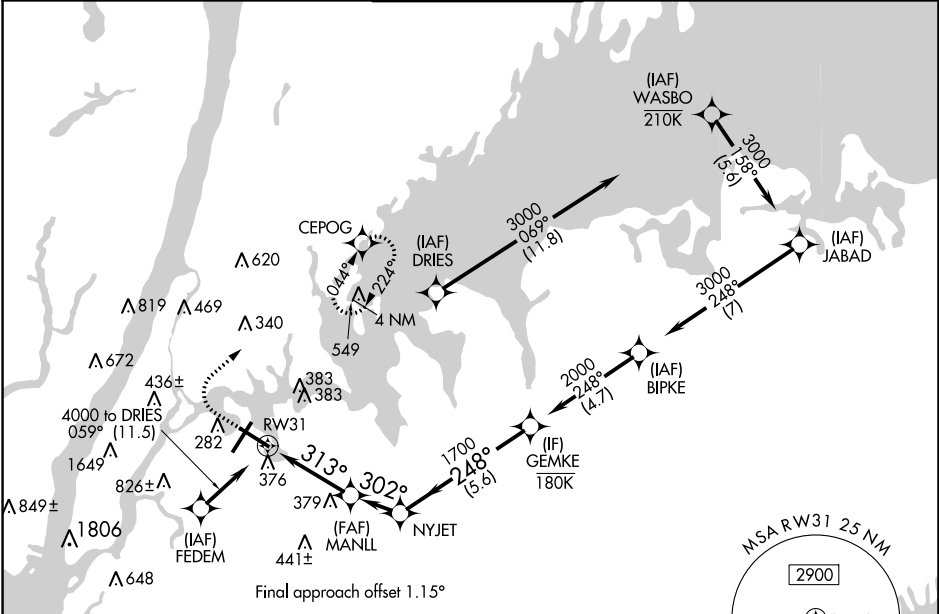
RNP APCH - GPS.

**▼** Rwy 31 helicopter visibility reduction below 1 SM NA. For uncompensated Baro-VNAV systems, LNAV/VNAV NA below -12°C or above 48°C. Circling NA northwest of Rwy 4 and southwest of Rwy 13.

**▲**

MISSED APPROACH: (Do not exceed 220K until CEPOG) Climb to 700 then climbing right turn to 2000 direct CEPOG and hold.

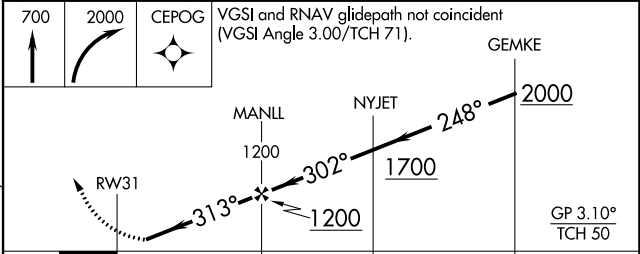
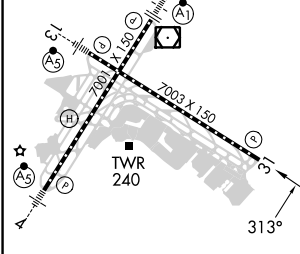
D-ATIS ARR	<b>125.95</b>	NEW YORK APP CON	<b>120.8 263.0</b>	LAGUARDIA TOWER	<b>118.7 263.0</b>	GND CON	<b>121.7 263.0</b>	CLNC DEL	<b>135.2</b>	CPDLC
D-ATIS DEP	<b>127.05</b>									



NE-2, 22 FEB 2024 to 21 MAR 2024

NE-2, 22 FEB 2024 to 21 MAR 2024

ELEV	21	<b>D</b>	TDZE	7
------	----	----------	------	---



CATEGORY	A	B	C	D
LNAV/ DA VNAV		618-1¾	611 (600-1¾)	
LNAV MDA	640/55	633 (700-1)	640-1¾	633 (700-1¾)
<b>C</b> CIRCLING	700-1	679 (700-1)	1080-3 1059 (1100-3)	NA

TDZ/CL Rws 4, 13 and 22  
HIRL Rws 4-22 and 13-31  
REIL Rwy 31

WAAS CH <b>60918</b> <b>W04A</b>	APP CRS <b>044°</b>	Rwy Idg TDZE Apt Elev	<b>7001</b> <b>21</b> <b>21</b>
--	------------------------	-----------------------------	---------------------------------------


# RNAV (GPS) Y RWY 4

LAGUARDIA (LGA)

RNP APCH - GPS

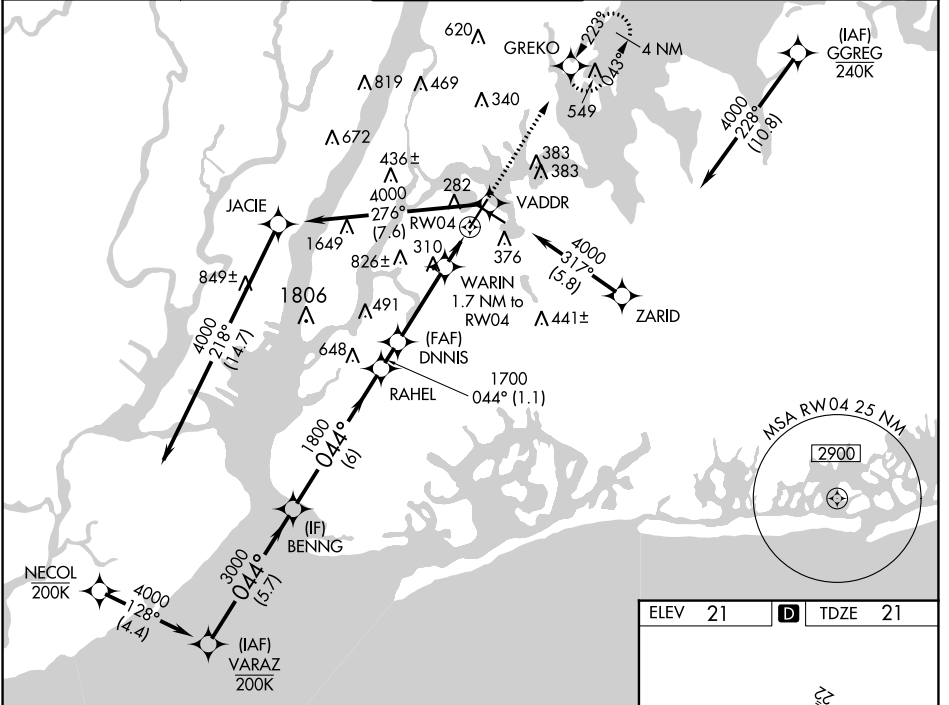
▼ Rwy 4 helicopter visibility reduction below RVR 5000 NA. Inop table does not apply to LPV all Cats, and LNAV Cat A and B. For uncompensated Baro-VNAV systems, LNAV/VNAV NA below -12°C or above 54°C. For inop ALS, increase LNAV/VNAV all Cats visibility to 1 3/8 SM. Circling NA northwest of Rwy 4 and southwest of Rwy 13. Going below glidepath may not provide obstacle clearance inside DA. Crossing Rwy threshold below charted TCH may not provide required visual area obstacle clearance. \*RVR 2400 authorized with FD or AP or HUD to DA.

MALSR



MISSED APPROACH:  
Climb to 2000 direct GREKO and hold, continue climb-in-hold to 2000.

D-ATIS ARR	<b>125.95</b>	NEW YORK APP CON	<b>120.8 263.0</b>	LAGUARDIA TOWER	<b>118.7 263.0</b>	GND CON	<b>121.7 263.0</b>	CLNC DEL	<b>135.2</b>	CPDLC
D-ATIS DEP	<b>127.05</b>									



NE-2, 22 FEB 2024 to 21 MAR 2024

NE-2, 22 FEB 2024 to 21 MAR 2024

ELEV	<b>21</b>	D	TDZE	<b>21</b>
------	-----------	---	------	-----------

BENNG

VGSI and RNAV glidepath not coincident (VGSI Angle 3.10/TCH 76).

GREKO

2000

3000

1800

1700

640

044°

GP 3.14° TCH 54

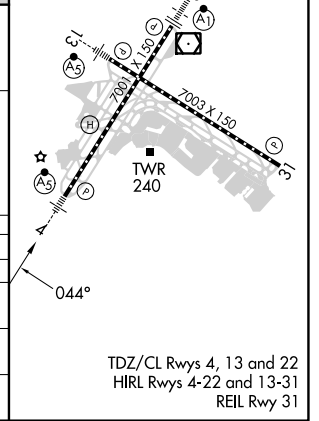
6 NM

1.1 NM

3.2 NM

1.7 NM

CATEGORY	A	B	C	D
LPV DA*		271/40	250 (300-3/4)	
LNAV/VNAV DA		499/50	478 (500-1)	
LNAV MDA	560/50	539 (600-1)	560/55	539 (600-1)
CIRCLING	680-1	659 (700-1)	700-2 679 (700-2)	760-2 1/4 739 (800-2 1/4)

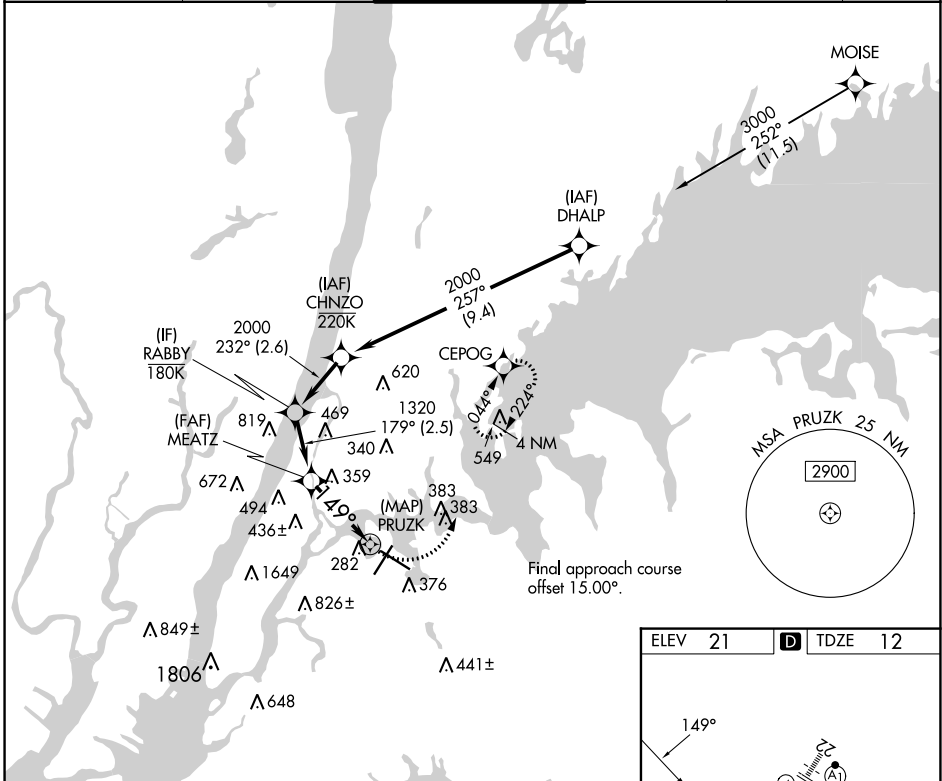


APP CRS	Rwy Idg	<b>7003</b>
<b>149°</b>	TDZE	<b>12</b>
	Apt Elev	<b>21</b>

# RNAV (GPS) Z RWY 13

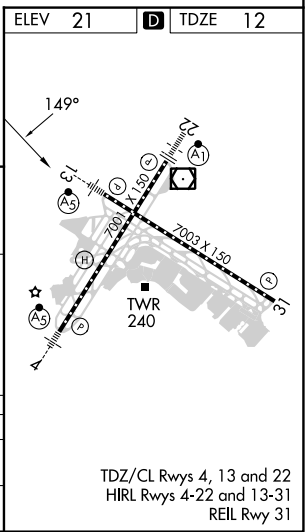
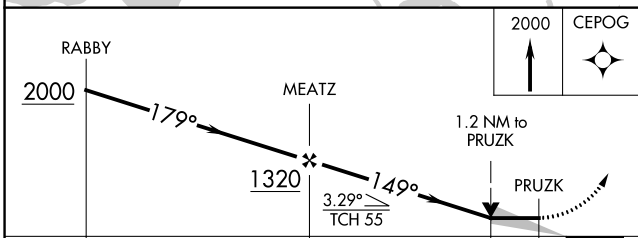
LAGUARDIA (LGA)

RNP APCH - GPS.		MALSR	MISSED APPROACH: (Do not exceed 220K) Climb to 2000 direct CEPOG and hold.							
Circling NA northwest of Rwy 4 and southwest of Rwy 13.										
D-ATIS ARR	<b>125.95</b>	NEW YORK APP CON	<b>120.8 263.0</b>	LAGUARDIA TOWER	<b>118.7 263.0</b>	GND CON	<b>121.7 263.0</b>	CLNC DEL	<b>135.2</b>	CPDLC
D-ATIS DEP	<b>127.05</b>									



NE-2, 22 FEB 2024 to 21 MAR 2024

NE-2, 22 FEB 2024 to 21 MAR 2024



CATEGORY	A	B	C	D
LNNAV MDA	620/24	608 (600-1/2)	620-1 3/4	608 (600-1 3/4)
CIRCLING	700-1	679 (700-1)	1080-3 1059 (1100-3)	1260-3 1239 (1300-3)

TDZ/CL Rws 4, 13 and 22  
HIRL Rws 4-22 and 13-31  
REIL Rwy 31

WAAS CH <b>48928</b> <b>W31A</b>	APP CRS <b>314°</b>	Rwy Idg <b>7003</b> TDZE <b>7</b> Apt Elev <b>21</b>
--	------------------------	--

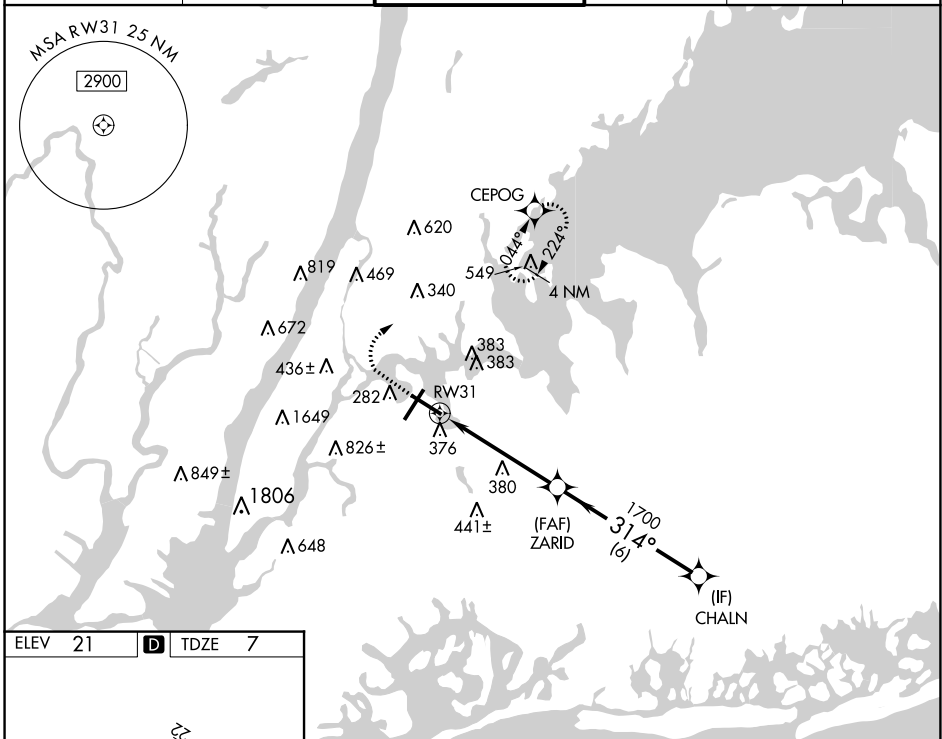
# RNAV (GPS) Z RWY 31

LAGUARDIA (LGA)

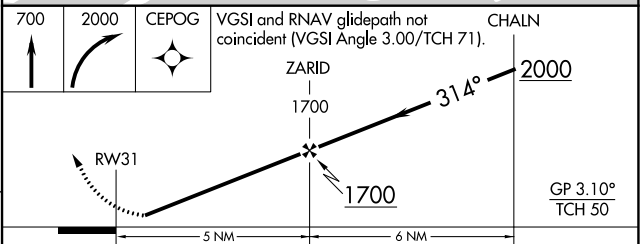
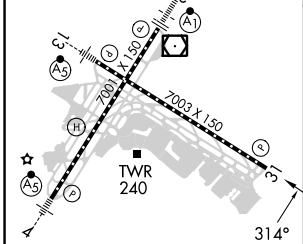
RNP APCH - GPS.  
 ▼ Rwy 31 helicopter visibility reduction below RVR 5000 NA. For uncompensated Baro-VNAV systems, LNAV/VNAV NA below -12°C or above 48°C. Circling NA northwest of Rwy 4 and southwest of Rwy 13.

MISSED APPROACH: (Do not exceed 220K until CEPOG) Climb to 700 then climbing right turn to 2000 direct CEPOG and hold.

D-ATIS ARR <b>125.95</b>	NEW YORK APP CON <b>120.8 263.0</b>	LAGUARDIA TOWER <b>118.7 263.0</b>	GND CON <b>121.7 263.0</b>	CLNC DEL <b>135.2</b>	CPDLC
D-ATIS DEP <b>127.05</b>					



ELEV 21	<b>D</b>	TDZE 7
---------	----------	--------



CATEGORY	A	B	C	D
LPV DA		330/50	323 (400-1)	
LNAV/VNAV DA		618-1¼	611 (600-1¼)	
LNAV MDA	640/55	633 (700-1)	640-1¼	633 (700-1¼)
<b>C</b> CIRCLING	700-1	679 (700-1)	1080-3 1059 (1100-3)	1260-3 1239 (1300-3)

TDZ/CL Rwys 4, 13 and 22  
 HIRL Rwys 4-22 and 13-31  
 REIL Rwy 31

NE-2, 22 FEB 2024 to 21 MAR 2024

NE-2, 22 FEB 2024 to 21 MAR 2024