

# RNAV (GPS) RWY 18

AL-6341 [USA]

LAGUNA AAF (KLGf)

ARCH CRS	Rwy Idg	<b>6142</b>
TDZE		<b>410</b>
APRt Elev		<b>433</b>

RNP APCH - GFS

⚠ RADAR required for holding.

⚠ Procedure NA when airfield closed.

\* Circling to Rwy 24 not authorized at night.

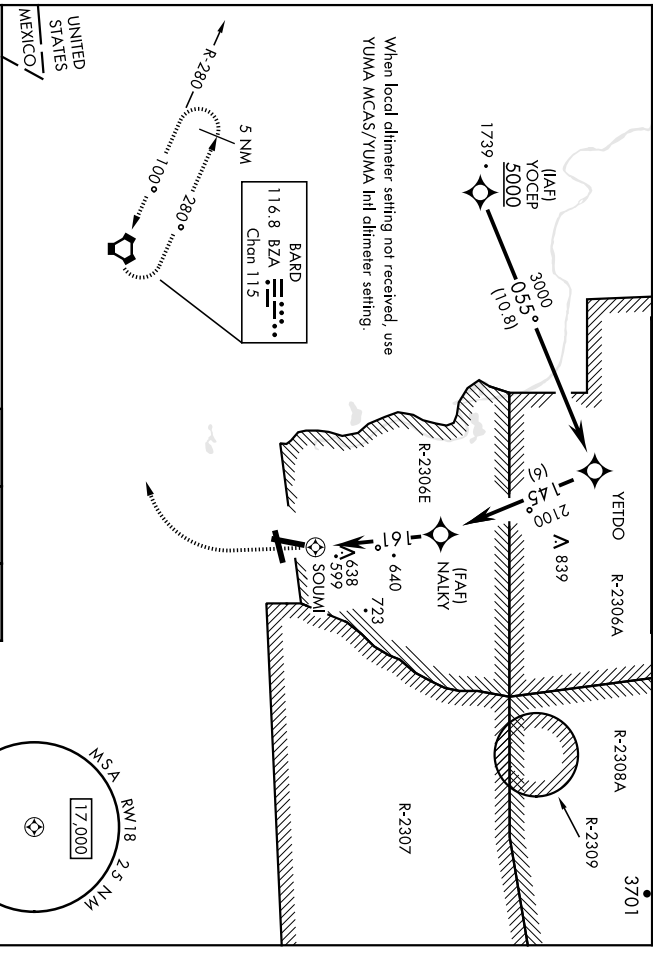
⚠ NA Circling not authorized NW of Rwys 6 and 18.

MISSED APPROACH: Climb to 1000, then climbing right turn to 3600 direct BZA VOR/DAC and hold, continue climbing in hold to 3600.

YUMA APP CON  
**124.7 371.975**

TOWER \*  
**126.2 (CTAF) 242.175**

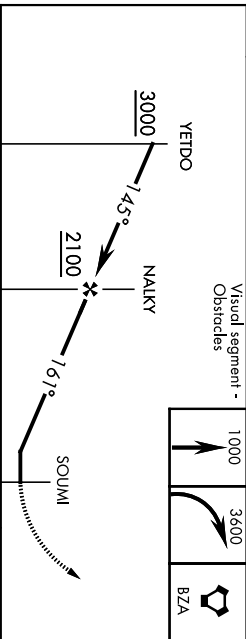
GND CON  
**121.8 229.4**



When local dlimeter setting not received, use YUMA MCAS/YUMA Inrl dlimeter setting.

BARD  
116.8 BZA  
Chan 11.5

UNITED STATES / MEXICO /

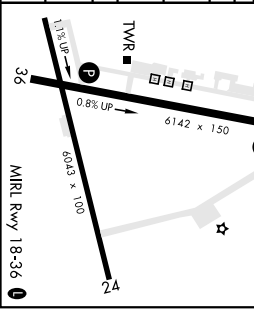


CATEGORY	A		B		C		D	
	1	2	1	2	1	2	1	2

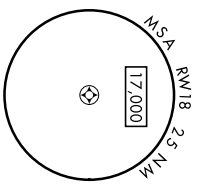
LNNAV MDA	900-1	490	(500-1)	900-1	3/8	490	(500-1)	3/8
ⓐ CIRCLING *	900-1	467	(500-1)	940-1	1/2	507	(600-1)	1/2
				507	(600-1)	607	(700-2)	

YUMA MCAS/YUMA Inrl ALTIMETER SETTING

LNNAV MDA	980-1	570	(600-1)	980-1	3/8	570	(600-1)	3/8
ⓐ CIRCLING *	980-1	547	(600-1)	1020-1	1/2	587	(600-1)	1/2
				587	(600-1)	687	(700-2)	



ELEV	433	TDZE	410
------	-----	------	-----



# RNAV (GPS) RWY 18

# RNAV (GPS) RWY 6

AL-6341 [USA]

LAGUNA AAF (KLGf)

ARCH CRS  
063°

Rwy. Idg  
TDZE 387  
Aptl Elev 433

RNP APCH - GPS

▲ N/A

Procedure not authorized when airfield closed.  
\*\* Straight-in Minimums not authorized at night.  
\*\* Circling not authorized N/W of Rwy 6 and 18.  
Circling to Rwy 24 not authorized at night.

MISSED APPROACH: Climbing right turn to 3600 direct BZA VORTAC and hold.

YUMA APP CON  
124.7 371.975

TOWER ★  
126.2 (CTA) 242.175

GND CON  
121.8 229.4

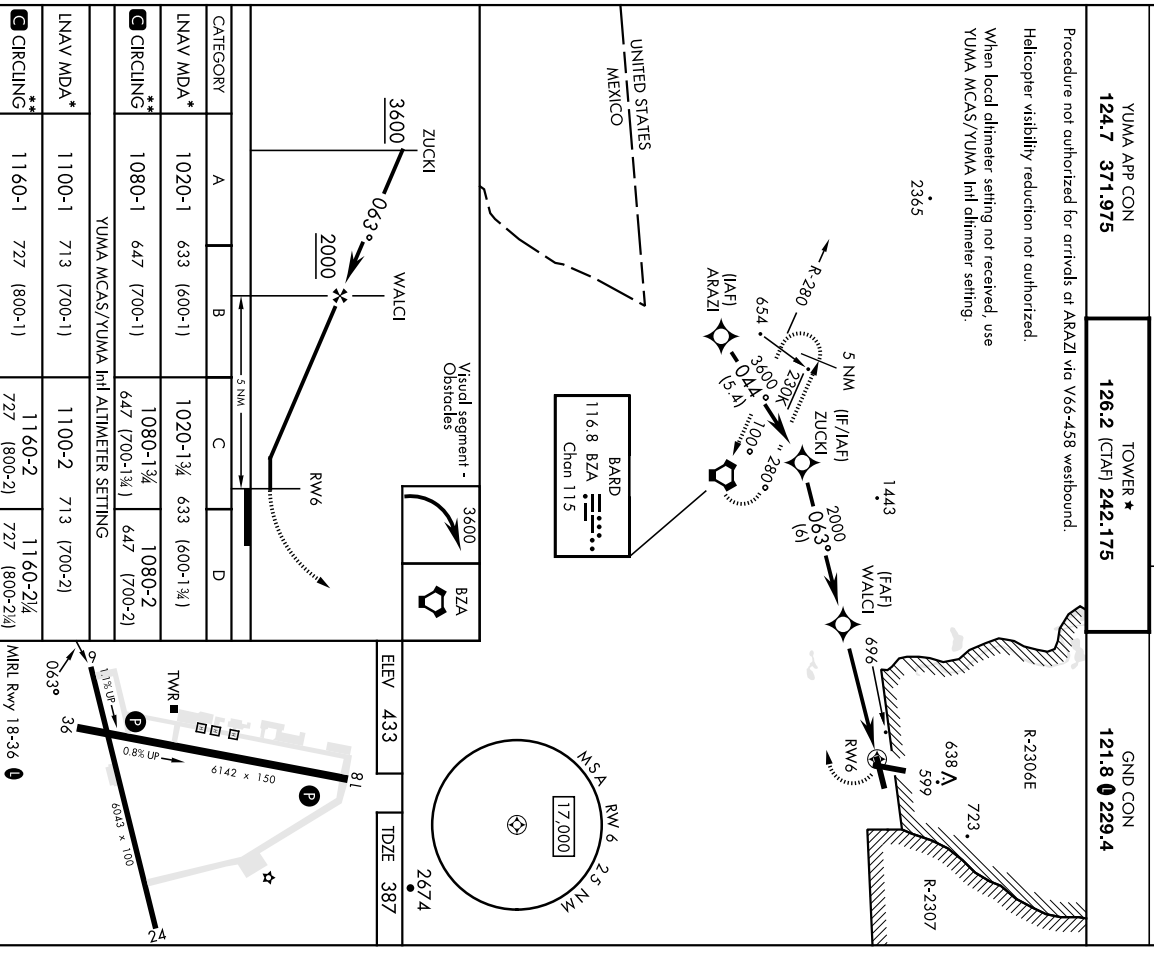
Procedure not authorized for arrivals at ARAZI via V66-458 westbound.

Helicopter visibility reduction not authorized.

When local altimeter setting not received, use YUMA MCAS/YUMA Intl altimeter setting.

SW-4, 22 FEB 2024 to 21 MAR 2024

SW-4, 22 FEB 2024 to 21 MAR 2024



VORTAC BZA

APCH CRS **116.8**  
Chn **115**

APCH Idg **60243**  
TDEZ Elev **387**  
Arpt Elev **433**

**VOR RWY 6**  
LAGUNA AAF (KLGf)

**NA**  
RADAR required for holding:  
\*\* Procedure not authorized at night.  
\*\* Circling not authorized NW of rwy's 06 and 18.

MISSED APPROACH: Climbng, right turn to 3800  
direct BZA VORTAC and hold, continue climb-in-  
hold to 3800.

YUMA APP CON  
**124.7 371.915**

TOWER \*  
**126.2 (Clf) 242.175**

GND CON  
**121.8 229.4**

Helicopter visibility reduction not authorized.

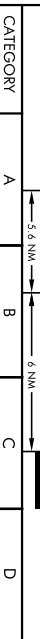
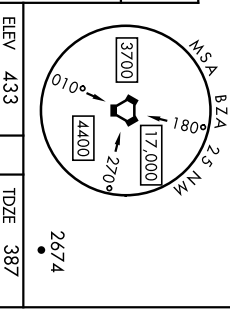
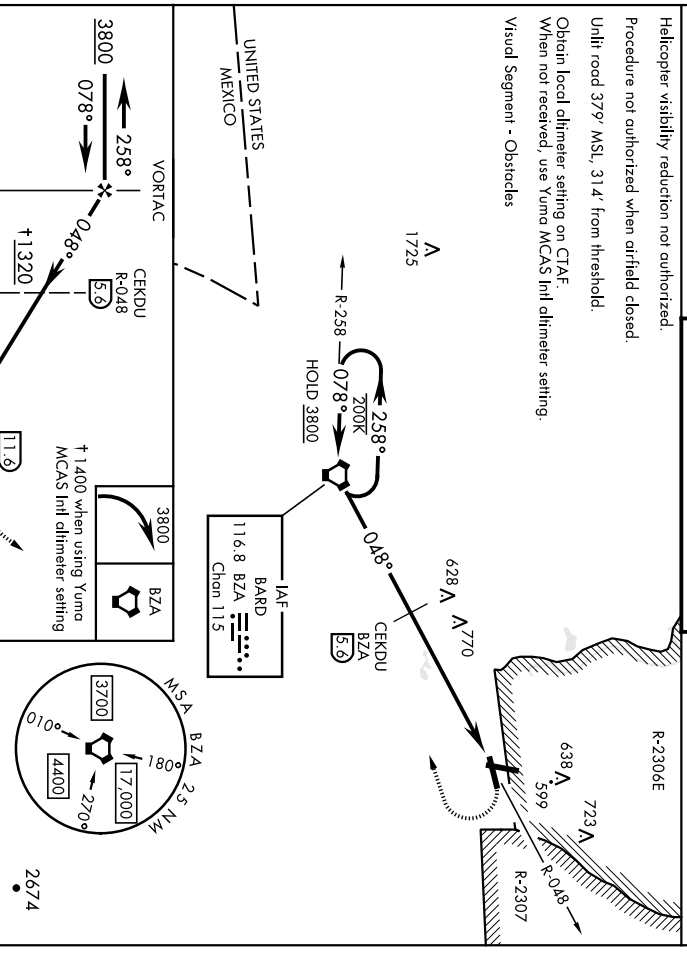
Procedure not authorized when airfield closed.

Unlit road 379' MSL, 31' ft. from threshold.

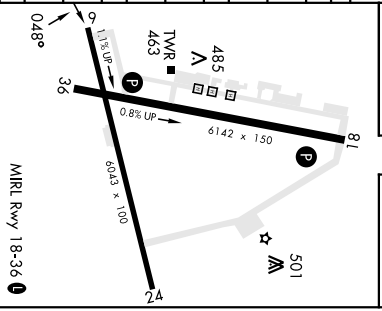
Obtain local altimeter setting on ClAF.

When not received, use Yuma MCAS Inlt altimeter setting.

Visual Segment - Obstacles



CATEGORY	A	B	C	D
S-6*	1320-1½ 933 (900-1¼)	1320-2½ 933 (900-2½)	1320-2¾ 1320-3	1320-3
<b>CIRCLING</b> ***	1320-1½ 887 (900-1¼)	887 (900-2¼)	887 (900-2¼)	887 (900-3)
DME MINIMA				
S-6*	1040-1 653 (700-1)	1040-1¾ 653 (700-1¾)	1080-1¾ 647 (700-1¾)	1080-2 647 (700-2)
<b>CIRCLING</b> ***	1080-1 647 (700-1)	647 (700-1¾)	647 (700-1¾)	647 (700-2)
YUMA MCAS/YUMA Inlt ALTIMETER SETTING				
S-6*	1400-1½ 1400-1½	1400-1½ 1013 (1000-3)	1400-3 1013 (1000-3)	1400-3 967 (1000-3)
<b>CIRCLING</b> ***	1400-1½ 1013 (1000-1½)	1400-1½ 1013 (1000-1½)	1400-3 967 (1000-3)	967 (1000-3)
YUMA MCAS/YUMA Inlt ALTIMETER SETTING DME MINIMA				
S-6*	1120-1 733 (700-1)	1120-2 733 (700-2)	1160-2 1160-2½	1160-2½
<b>CIRCLING</b> ***	1160-1 727 (800-1)	727 (800-2)	727 (800-2)	727 (800-2½)



FAF to MAP 11.6 NM					
Knots	60	90	120	150	180
Min:Sec	11:36	7:44	5:48	4:38	3:52