

LOC/DME I-LHZ 109.35 Chan 30(Y)	APP CRS 046°	Rwy Idg TDZE Apt Elev	5498 368 368
--	------------------------	-----------------------------	---

ILS or LOC RWY 5

TRIANGLE NORTH EXEC (LHZ)

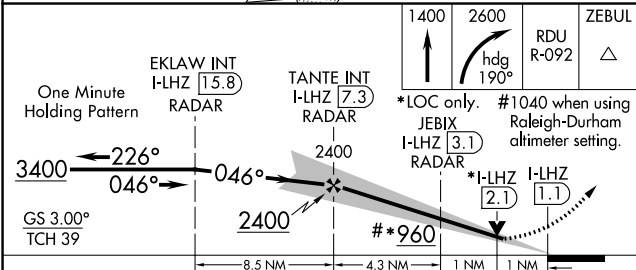
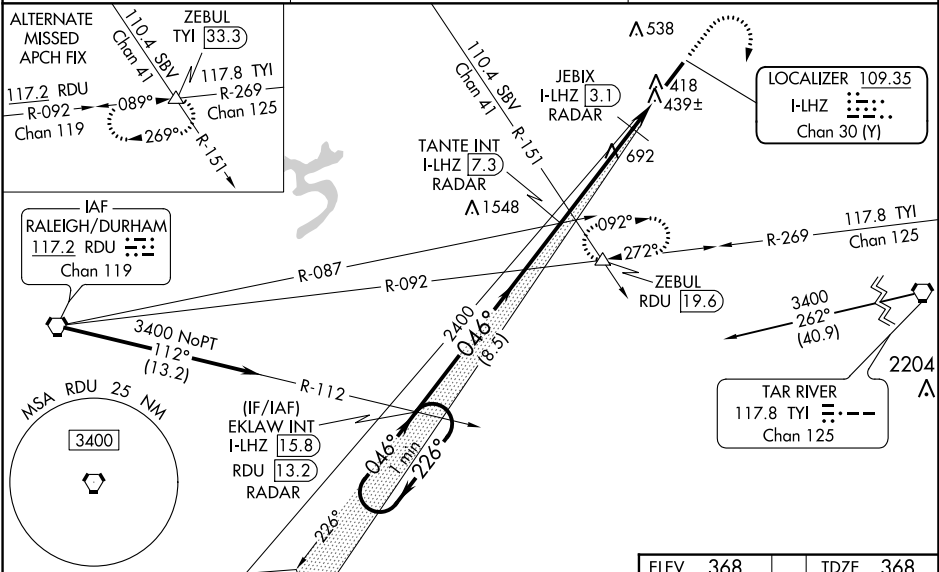
DME or RADAR required.

NA VDP NA when using Raleigh-Durham altimeter setting. When local altimeter setting not received, use Raleigh-Durham altimeter setting and increase ILS DA to 633 feet and all MDAs 80 feet; increase S-LOC and Circling visibility Cats C/D ¼ SM and JEBIX Fix Minimums: Circling visibility Cat C/D ¼ SM. For inop ALS when using Raleigh-Durham altimeter setting, increase S-ILS all Cats visibility to ½ SM, S-LOC Cats C/D visibility to 1½ SM and JEBIX Fix Minimums S-LOC Cats C/D visibility to 1½ SM.



MISSED APPROACH: Climb to 1400 then climbing right turn to 2600 on heading 190° and on RDU VORTAC R-092 to ZEBUL INT/RDU 19.6 DME and hold.

AWOS-3 118.325	RALEIGH APP CON 125.3 353.675	UNICOM 123.0 (CTAF)
--------------------------	---	-------------------------------



ELEV 368	TDZE 368
HIRL Rwy 5-23	
REIL Rwy 23	
FAF to MAP 6.3 NM	
Knots	60 90 120 150 180
Min:Sec	6:18 4:12 3:09 2:31 2:06

CATEGORY	A	B	C	D
S-ILS 5		568-½	200 (200-½)	
S-LOC 5	960-½	592 (600-½)	960-1¼	592 (600-1¼)
CIRCLING	960-1	592 (600-1)	980-1¾ 612 (700-1¾)	1000-2 632 (700-2)
JEBIX FIX MINIMUMS				
S-LOC 5	700-½	332 (400-½)	700-¾	332 (400-¾)
CIRCLING	800-1 432 (500-1)	840-1 472 (500-1)	980-1¾ 612 (700-1¾)	1000-2 632 (700-2)

SE-2, 22 FEB 2024 to 21 MAR 2024

SE-2, 22 FEB 2024 to 21 MAR 2024

WAAS CH 62825 W23A	APP CRS 227°	Rwy Idg TDZE Apt Elev	5498 352 368
--	------------------------	-----------------------------	---

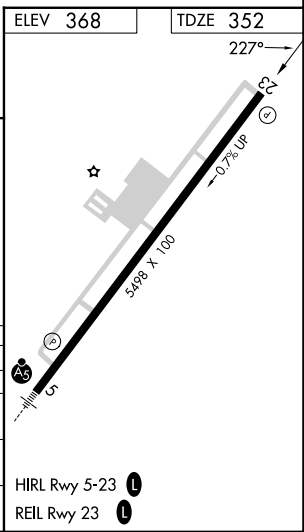
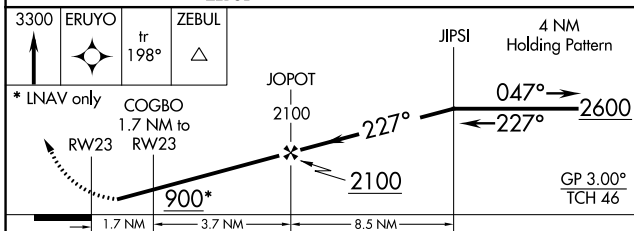
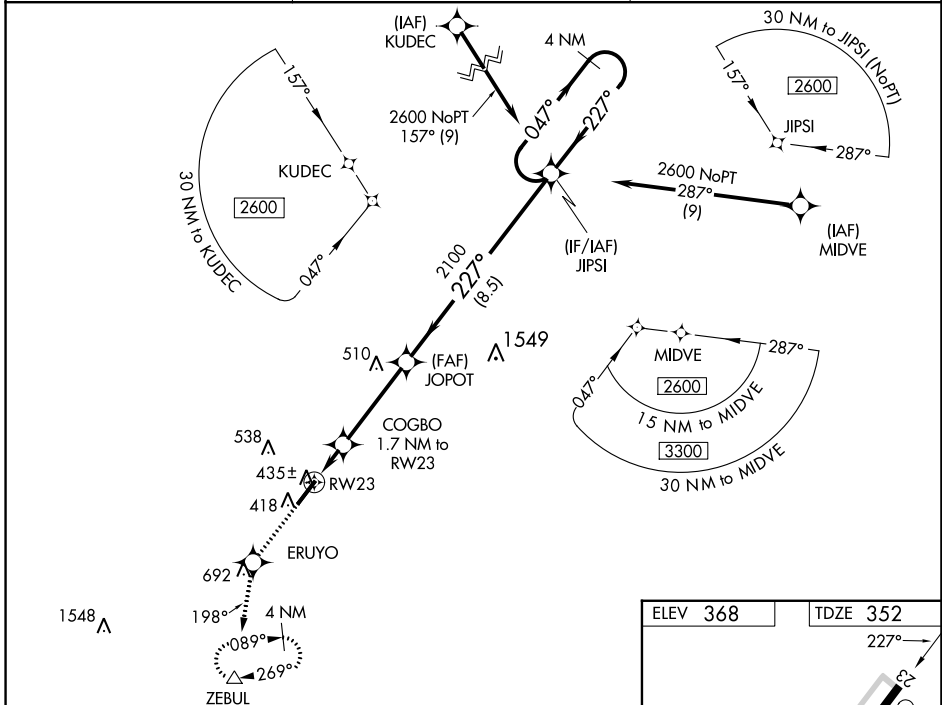
RNAV (GPS) RWY 23

TRIANGLE NORTH EXEC (LHZ)

⚠ Baro-VNAV NA when using Raleigh-Durham altimeter setting. For uncompensated Baro-VNAV systems, LNAV/VNAV NA below -15°C (5°F) or above 41°C (105°F). When VGSi inop, Straight-in/Circling Rwy 23 procedure NA at night. DME/DME RNP-0.3 NA. Helicopter visibility reduction below 1 SM NA. When local altimeter setting not received, use Raleigh-Durham altimeter setting and increase LPV DA to 667 feet; LNAV/VNAV DA to 684 feet and all visibilities ½ SM. Increase all MDAs 80 feet and visibility Cats C/D ¾ SM.

MISSED APPROACH: Climb to 3300 direct ERUYO and on track 198° to ZEBUL and hold, continue climb-in-hold to 3300.

AWOS-3 118.325	RALEIGH APP CON 125.3 353.675	UNICOM 123.0 (CTAF) 0
--------------------------	---	---------------------------------



CATEGORY	A	B	C	D
LPV DA		602-1	250 (300-1)	
LNAV/VNAV DA		619-1	267 (300-1)	
LNAV MDA		700-1	348 (400-1)	
CIRCLING	800-1 432 (500-1)	840-1 472 (500-1)	980-1¾ 612 (700-1¾)	1000-2 632 (700-2)

SE-2, 22 FEB 2024 to 21 MAR 2024

SE-2, 22 FEB 2024 to 21 MAR 2024

WAAS CH 90103 W05A	APP CRS 046°	Rwy Idg TDZE Apt Elev	5498 368 368
--	------------------------	-----------------------------	---

RNAV (GPS) RWY 5

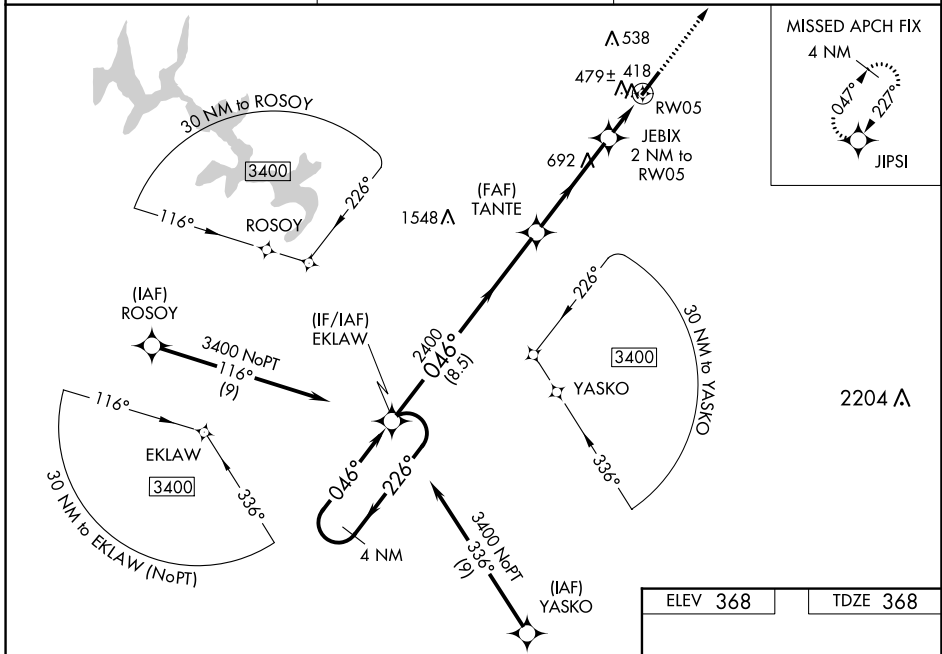
TRIANGLE NORTH EXEC (LHZ)

⚠ For uncompensated Baro-VNAV systems, LNAV/VNAV NA below -15°C (5°F) or above 41°C (105°F). DME/DME RNP-0.3 NA. When local altimeter setting not received, use Raleigh-Durham altimeter setting and increase LPV DA to 633 feet; LNAV/VNAV DA to 705 feet and all visibilities ½ SM. Increase all MDAs 80 feet and visibility Cat C/D ¼ SM. For inop MALSR, increase LNAV/VNAV all Cats visibility to ¾ mile and LNAV Cats C/D visibility to 1 mile. For inop MALSR when using Raleigh-Durham altimeter setting, increase LPV all Cats visibility to ¾ mile. Baro-VNAV and VDP NA with Raleigh-Durham altimeter setting.



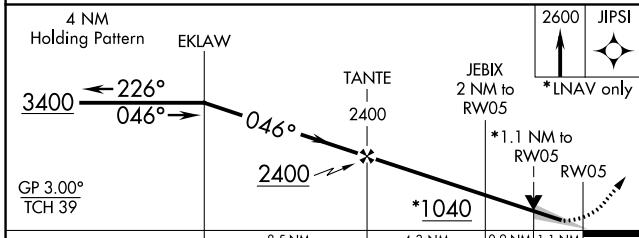
MISSED APPROACH:
Climb to 2600 direct
JIPSI and hold.

AWOS-3 118.325	RALEIGH APP CON 125.3 353.675	UNICOM 123.0 (CTAF)
--------------------------	---	-------------------------------

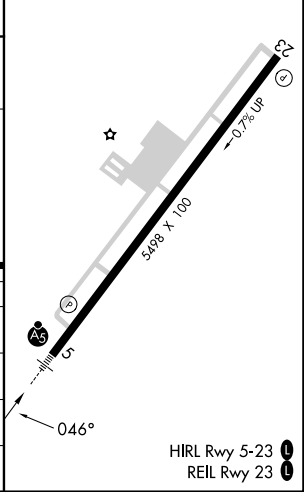


SE-2, 22 FEB 2024 to 21 MAR 2024

SE-2, 22 FEB 2024 to 21 MAR 2024



ELEV 368	TDZE 368
----------	----------



CATEGORY	A	B	C	D
LPV DA		568-½	200 (200-½)	
LNAV/VNAV DA		640-½	272 (300-½)	
LNAV MDA	740-½	372 (400-½)	740-⅝	372 (400-⅝)
CIRCLING	800-1 432 (500-1)	840-1 472 (500-1)	980-1¼ 612 (700-1¼)	1000-2 632 (700-2)

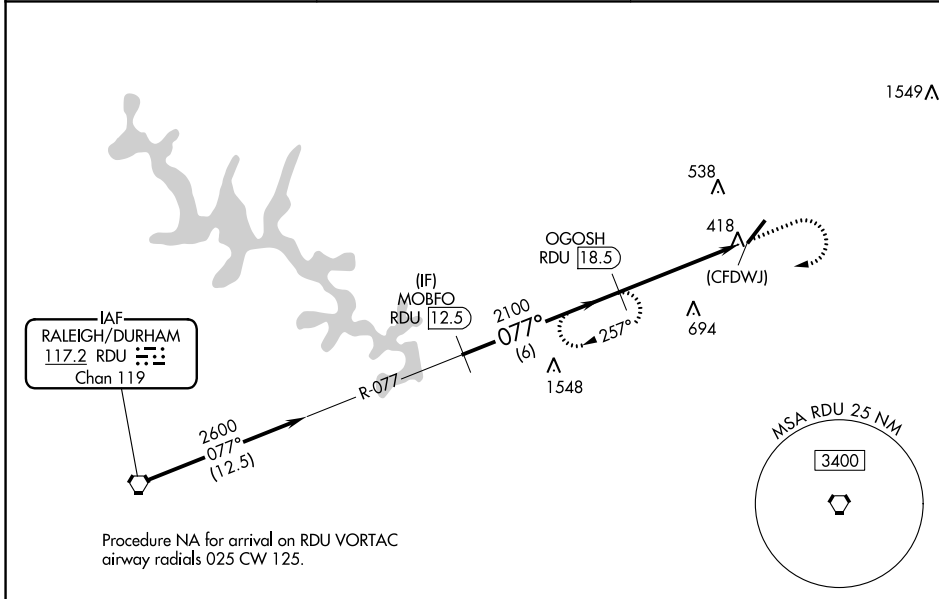
HIRL Rwy 5-23
REIL Rwy 23

VORTAC RDU 117.2 Chan 119	APP CRS 077°	Rwy Idg TDZE Apt Elev N/A N/A 368
---	------------------------	---

VOR-A
TRIANGLE NORTH EXEC (L.H.Z)

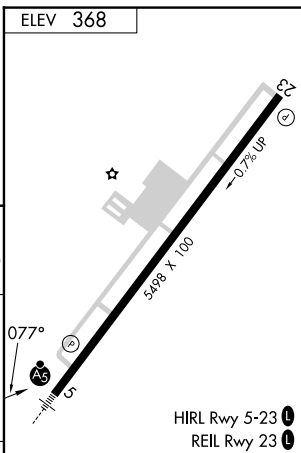
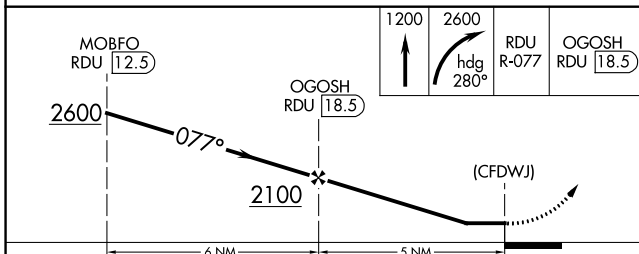
DME required.	MISSED APPROACH: Climb to 1200 then climbing right turn to 2600 on heading 280° and on RDU VORTAC R-077 to OGOSH/RDU 18.5 DME and hold.
<p>▼ When local altimeter not received, use Raleigh-Durham Intl altimeter setting and increase all MDA 80 feet and Cats B/C visibility ¼ SM.</p> <p>▲</p>	

AWOS-3 118.325	RALEIGH APP CON 125.3 353.675	UNICOM 123.0 (CTAF) 0
--------------------------	---	---------------------------------



SE-2, 22 FEB 2024 to 21 MAR 2024

SE-2, 22 FEB 2024 to 21 MAR 2024



CATEGORY	A	B	C	D	FAF to MAP 5 NM					
	1260-1¼	892 (900-1¼)	1260-2¾	1260-3	Knots	60	90	120	150	180
CIRCLING			892 (900-2¾)	892 (900-3)	Min:Sec	5:00	3:20	2:30	2:00	1:40