

APP CRS	Rwy Idg	4482
256°	TDZE	88
	Apt Elev	88

RNAV (GPS) RWY 25

LOMPOC (LPC)

RNP APCH.

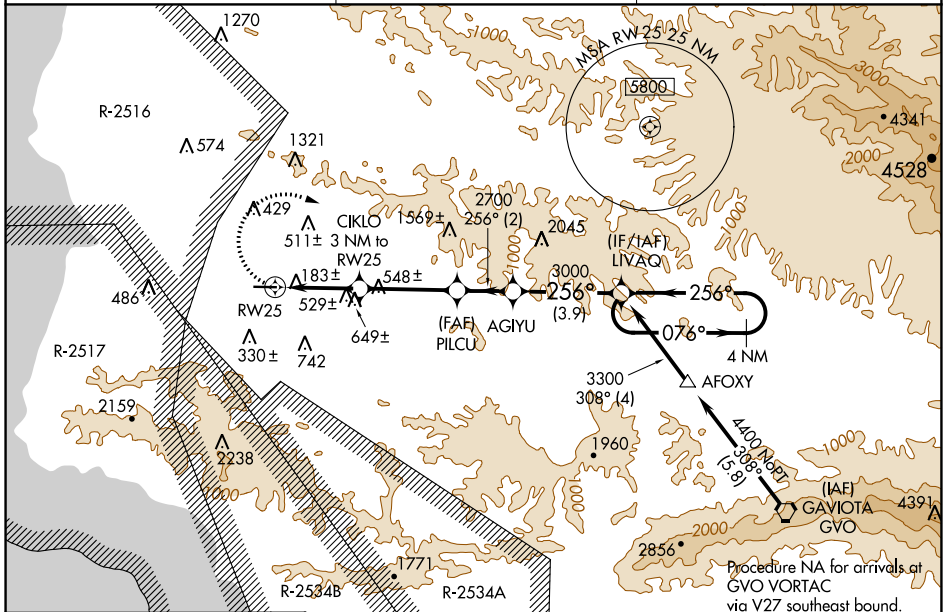
▼ When local altimeter setting not received, use Santa Maria Pub/Capt G Allan Hancock Fld altimeter setting and increase all MDA 60 feet, and increase LNAV and Circling Cat B visibility 1/4 SM. Procedure NA at night.

MISSED APPROACH: Climbing right turn to 3300 direct LIVAQ and hold.

AWOS-3PT
133.875

SANTA BARBARA APP CON★
124.15 327.8

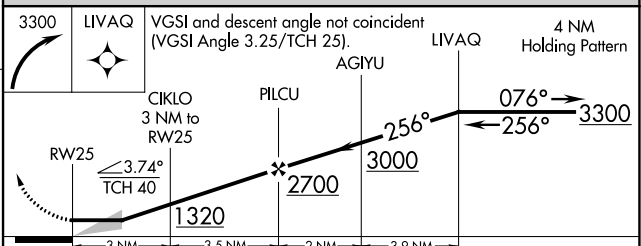
UNICOM
122.7 (CTAF) 0



SW-3, 22 FEB 2024 to 21 MAR 2024

SW-3, 22 FEB 2024 to 21 MAR 2024

ELEV 88 TDZE 88



CATEGORY	A	B	C	D
LNAV MDA	1000-1¼	912 (1000-1¼)		NA
CIRCLING	1000-1¼	912 (1000-1¼)		NA

REIL Rwy 25 0
MIRL Rwy 7-25 0

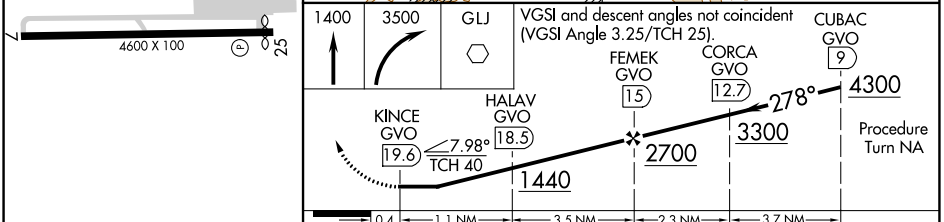
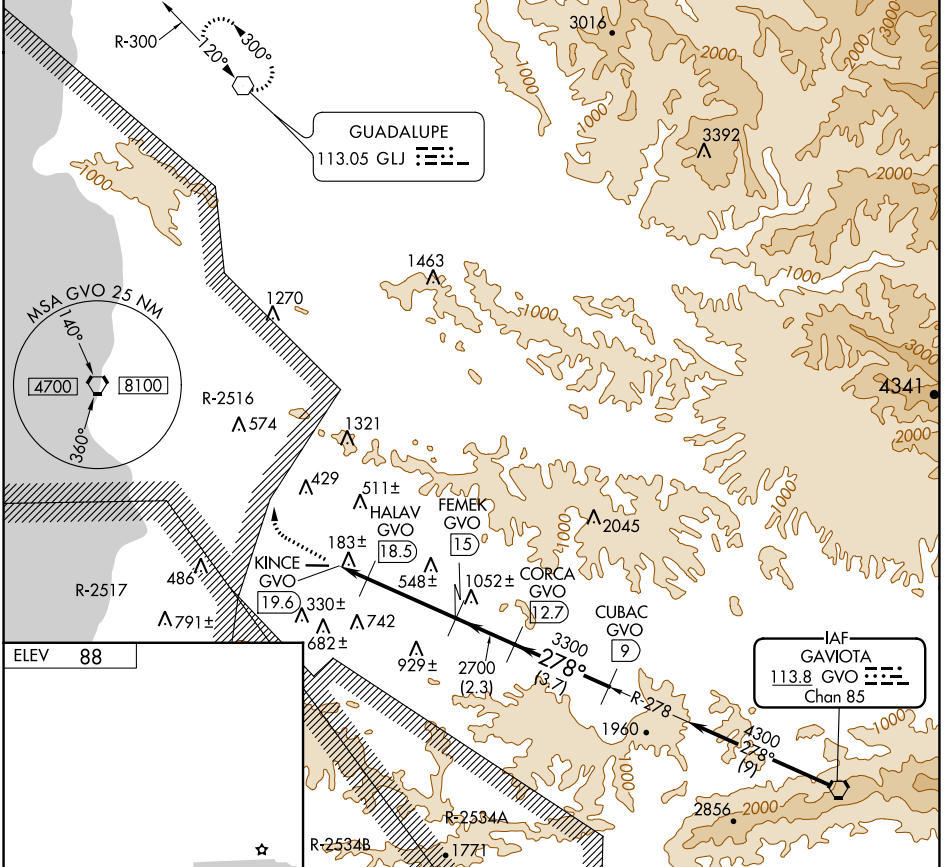
VORTAC GVO 113.8 Chan 85	APP CRS 278°	Rwy Idg TDZE Apt Elev	N/A N/A 88
---------------------------------------	------------------------	-----------------------------	---------------------------------------

VOR/DME-A LOMPOC (LPC)

Procedure NA at night.

MISSED APPROACH: Climb to 1400, then climbing right turn to 3500 direct GLJ VOR and hold.

AWOS-3PT 133.875	SANTA BARBARA APP CON* 124.15 327.8	UNICOM 122.7 (CTAF)
----------------------------	---	-------------------------------



REIL Rwy 25	MIRL Rwy 7-25	CATEGORY		A	B	C	D
		CIRCLING	1340-1¼ 1252 (1300-1¼)	1340-1½ 1252 (1300-1½)	NA		

SW-3, 22 FEB 2024 to 21 MAR 2024

SW-3, 22 FEB 2024 to 21 MAR 2024