

WAAS CH 62817 W17A	APP CRS 174°	Rwy Idg 3700 TDZE 12 Apt Elev 12
--	------------------------	---

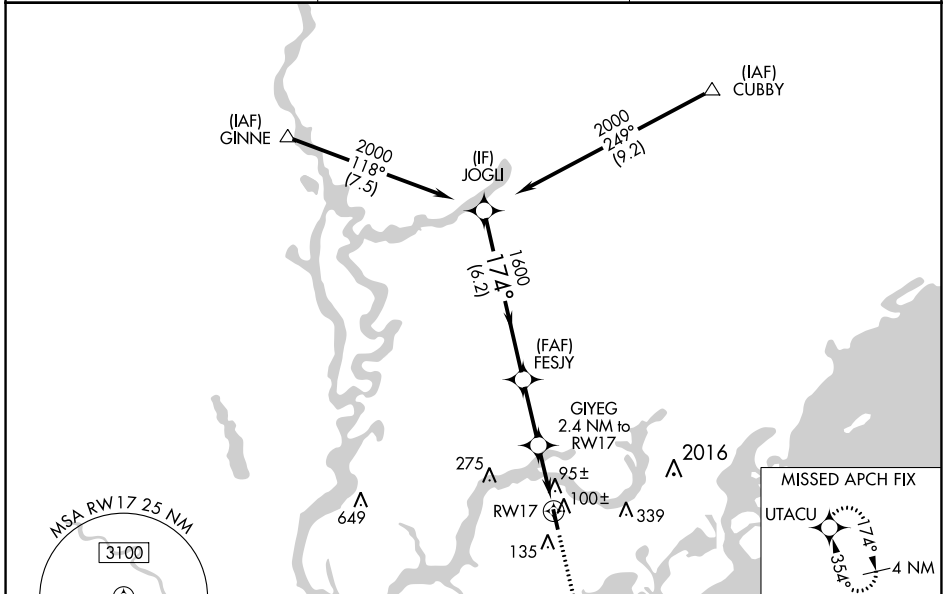
RNAV (GPS) RWY 17

MT PLEASANT RGNL-FAISON FLD (L.R.O)

⚠ For uncompensated Baro-VNAV systems, LNAV/VNAV NA below -15°C (5°F) or above 54°C (130°F). DME/DME RNP-0.3 NA. When local altimeter setting not received, use Charleston AFB/Intl altimeter setting and increase all DA/MDA 40 feet, increase LPV, LNAV/VNAV all Cats, and LNAV Cat C visibility ½ mile. Baro-VNAV NA with Charleston AFB/Intl altimeter setting. VDP NA with Charleston AFB/Intl altimeter setting. Helicopter visibility reduction below ¾ SM NA.

MISSED APPROACH: Climb to 3000 direct UTACU and hold, continue climb-in-hold to 3000.

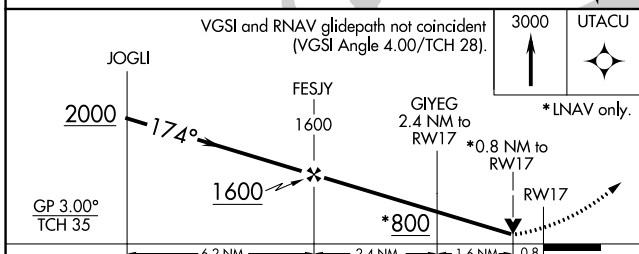
AWOS-3 118.625	CHARLESTON APP CON 121.275 379.925	UNICOM 122.7 (CTAF) 0
--------------------------	--	---------------------------------



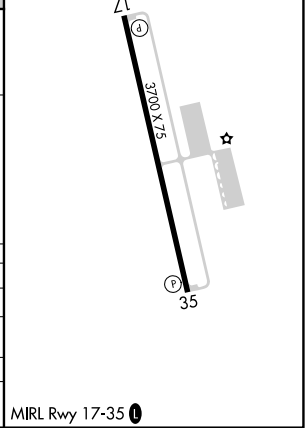
SE-2, 22 FEB 2024 to 21 MAR 2024

SE-2, 22 FEB 2024 to 21 MAR 2024

ELEV 12	TDZE 12
---------	---------



CATEGORY	A	B	C	D
LPV DA	307-1	295 (300-1)		NA
LNAV/VNAV DA	389-1¼	377 (400-1¼)		NA
LNAV MDA	360-1	348 (400-1)		NA
CIRCLING	460-1 448 (500-1)	520-1 508 (600-1)	640-1¾ 628 (700-1¾)	NA



APP CRS	Rwy Idg	3700
354°	TDZE	12
	Apt Elev	12

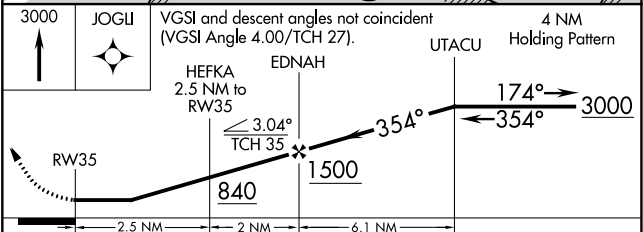
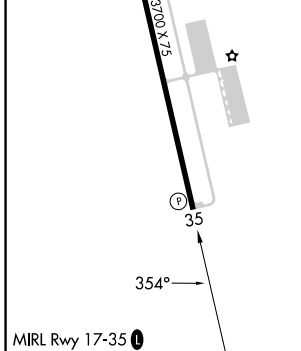
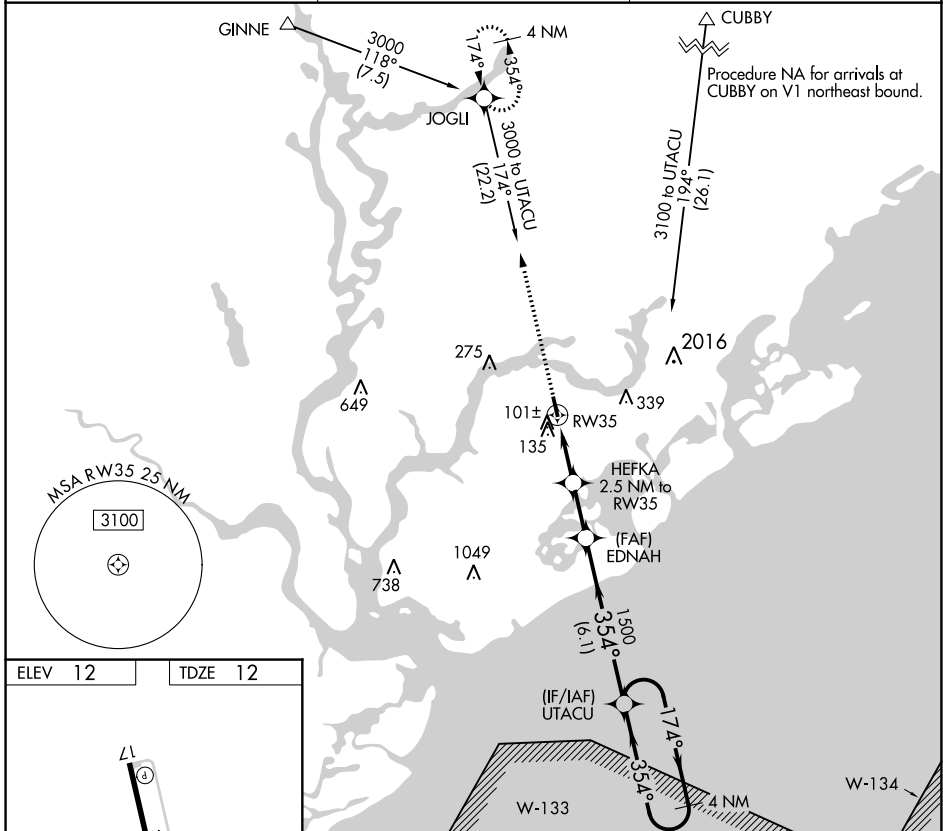
RNAV (GPS) RWY 35

MT PLEASANT RGNL-FAISON FLD (L.R.O)

RNP APCH. MISSED APPROACH: Climb to 3000 direct JOGLI and hold, continue climb-in-hold to 3000.

⚠ When local altimeter setting not received, use Charleston AFB/Intl altimeter setting and increase all MDA 40 feet, and LNAV Cat C visibility 1/8 mile.

AWOS-3 118.625	CHARLESTON APP CON 121.275 379.925	UNICOM 122.7 (CTAF) 0
--------------------------	--	---------------------------------



CATEGORY	A	B	C	D
LNAV MDA	380-1 368 (400-1)			NA
CIRCLING	460-1 448 (500-1)	520-1 508 (600-1)	640-1 3/4 628 (700-1 3/4)	NA

SE-2, 22 FEB 2024 to 21 MAR 2024

SE-2, 22 FEB 2024 to 21 MAR 2024

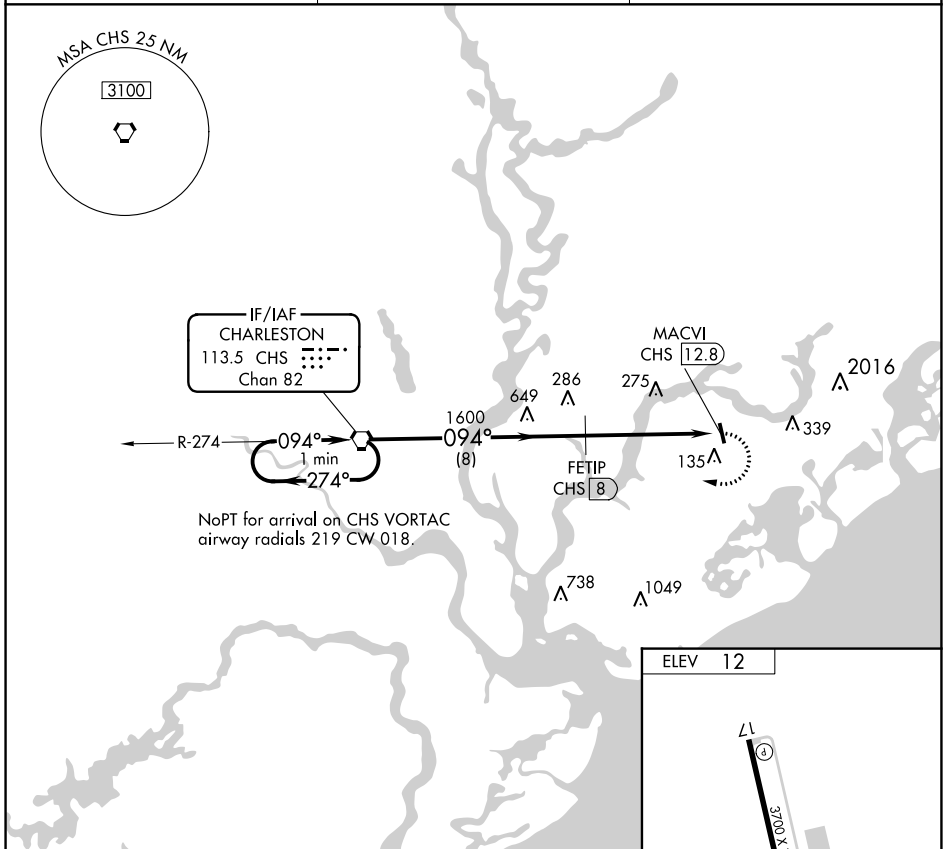
VORTAC CHS 113.5 Chan 82	APP CRS 094°	Rwy Idg TDZE Apt Elev	N/A N/A 12
--	------------------------	-----------------------------	-------------------------

VOR/DME-A
MT PLEASANT RGNL-FAISON FLD (L.R.O)

⚠ When local altimeter setting not received, use Charleston AFB/Intl altimeter setting and increase all MDA 40 feet.

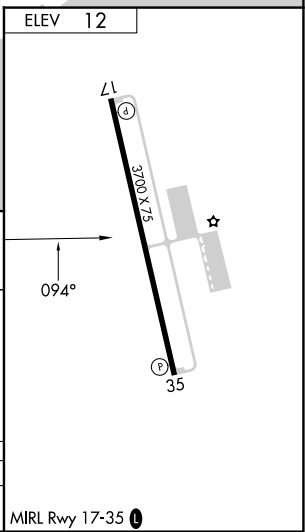
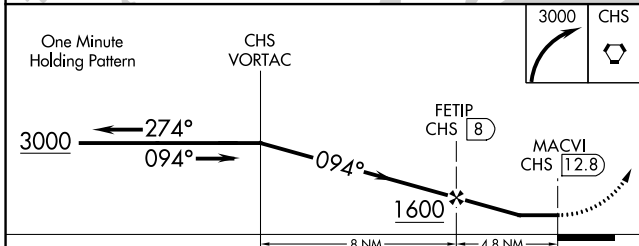
⚠ MISSED APPROACH: Climbing right turn to 3000 direct CHS VORTAC and hold.

AWOS-3 118.625	CHARLESTON APP CON 121.275 379.925	UNICOM 122.7 (CTAF) 0
--------------------------	--	---------------------------------



SE-2, 22 FEB 2024 to 21 MAR 2024

SE-2, 22 FEB 2024 to 21 MAR 2024



CATEGORY	A	B	C	D
CIRCLING	540-1	528 (600-1)	640-1 ³ / ₄ 628 (700-1 ³ / ₄)	NA