

RNAV (GPS) RWY 2

LAS VEGAS MUNI (LVS)

| | |
|------------------------|-------------------------|
| APP CRS 022° | Rwy Idg 5006 |
| | TDZE 6870 |
| | Apt Elev 6877 |

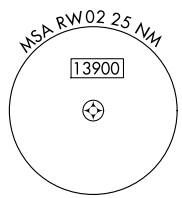
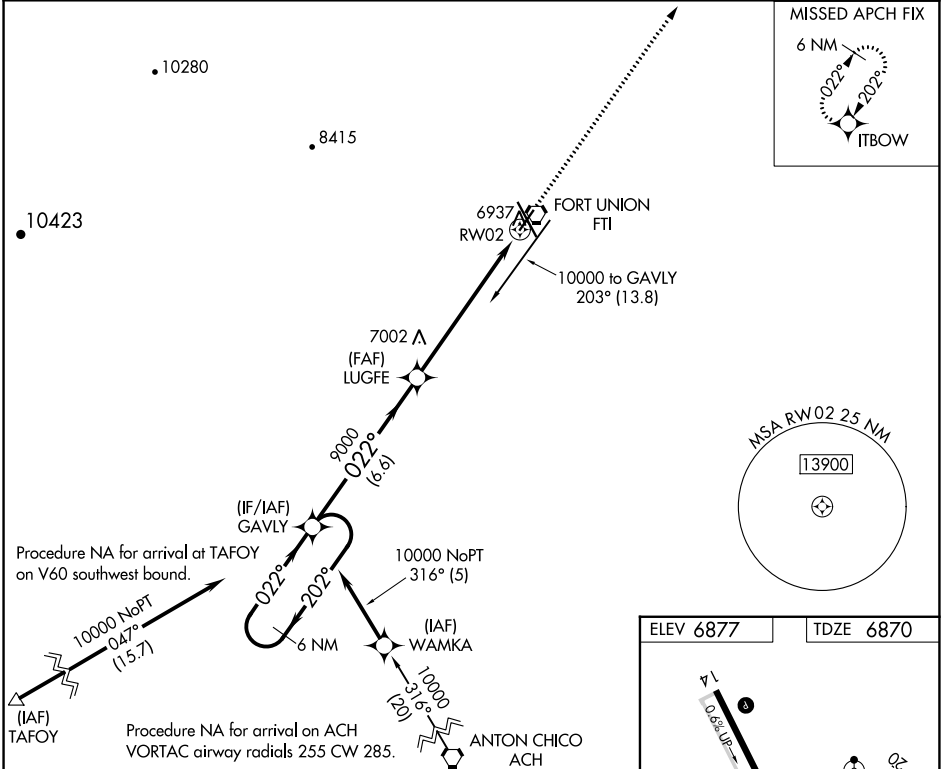
RNP APCH-GPS.

⚠ Inop table does not apply to Cat C. When local altimeter setting not received, use Santa Fe Rgnl altimeter setting and increase all MDAs 200 feet; increase LNAV Cat C visibility to 1 1/4 SM and Circling Cat C visibility to 2 1/4 SM.

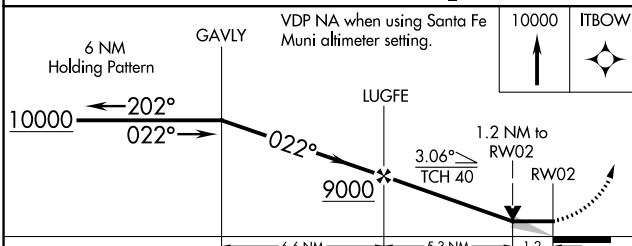
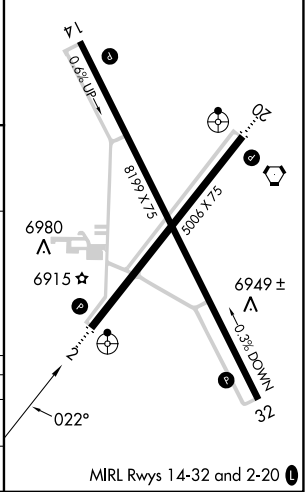


MISSED APPROACH: Climb to 10000 direct ITBOW and hold.

| | | |
|------------------------|---|---------------------------------|
| ASOS 118.525 | ALBUQUERQUE CENTER 132.8 346.35 | UNICOM 122.8 (CTAF) 0 |
|------------------------|---|---------------------------------|



| | |
|-----------|-----------|
| ELEV 6877 | TDZE 6870 |
|-----------|-----------|



| CATEGORY | A | B | C | D |
|----------|----------------------|----------------------------|-------------------------------|----|
| LNAV MDA | 7280 ^{-3/4} | 410 (500 ^{-3/4}) | 7280-1 1/4 410 (500-1 1/4) | NA |
| CIRCLING | 7420-1 | 543 (600-1) | 7420-1 1/2 543 (600-1 1/2) | NA |

SW-1, 22 FEB 2024 to 21 MAR 2024

SW-1, 22 FEB 2024 to 21 MAR 2024

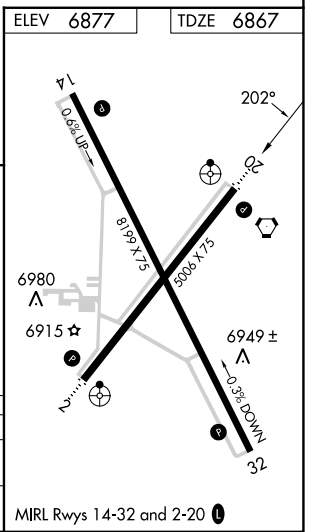
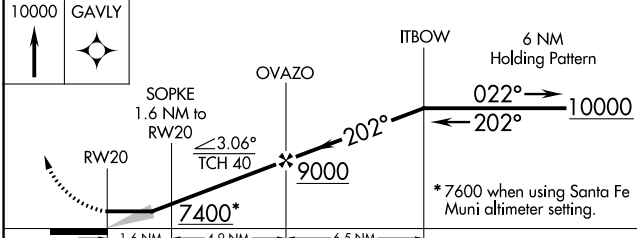
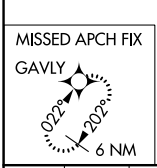
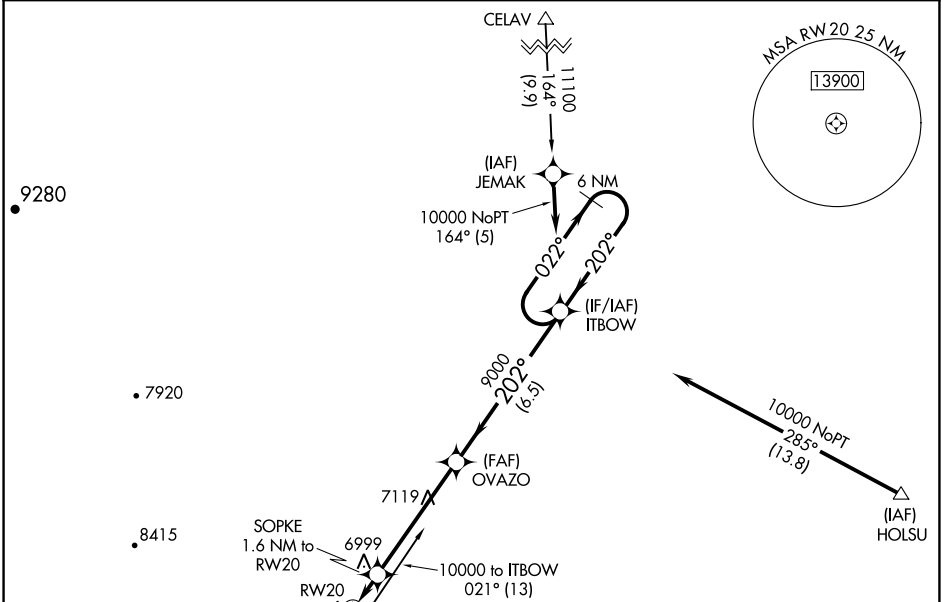
RNAV (GPS) RWY 20

LAS VEGAS MUNI (LVS)

| | |
|------------------------|-------------------------|
| APP CRS 202° | Rwy Idg 5006 |
| | TDZE 6867 |
| | Apt Elev 6877 |

| | | |
|---|-------|--|
| RNP APCH-GPS. | ODALS | MISSED APPROACH: Climb to 10000 direct GAVLY and hold. |
| <p>⚠ When local altimeter setting not received, use Santa Fe Rgnl altimeter setting and increase all MDAs 200 feet; increase LNAV Cat C visibility to 1½ SM and Circling Cat C visibility to 2¼ SM. Straight-in minimums NA when using Santa Fe Muni altimeter setting.</p> | | |

| | | |
|------------------------|---|-------------------------------|
| ASOS 118.525 | ALBUQUERQUE CENTER 132.8 346.35 | UNICOM 122.8 (CTAF) |
|------------------------|---|-------------------------------|



| | | | | |
|----------|--------------------|-------------|----------------------|----|
| CATEGORY | A | B | C | D |
| LNAV MDA | 7260-¾ 393 (400-¾) | | | NA |
| CIRCLING | 7420-1 | 543 (600-1) | 7420-1½ 543 (600-1½) | NA |

SW-1, 22 FEB 2024 to 21 MAR 2024

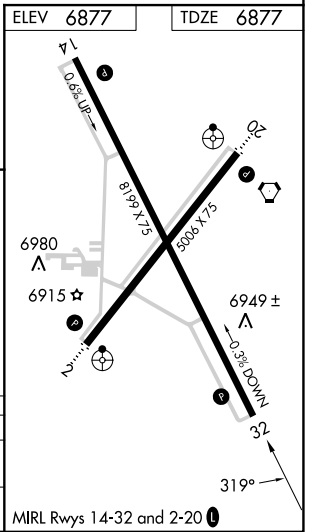
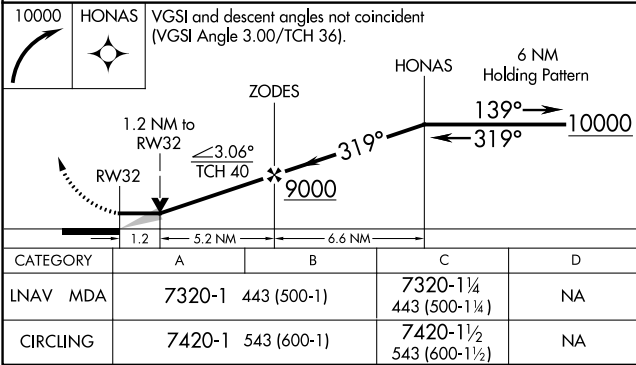
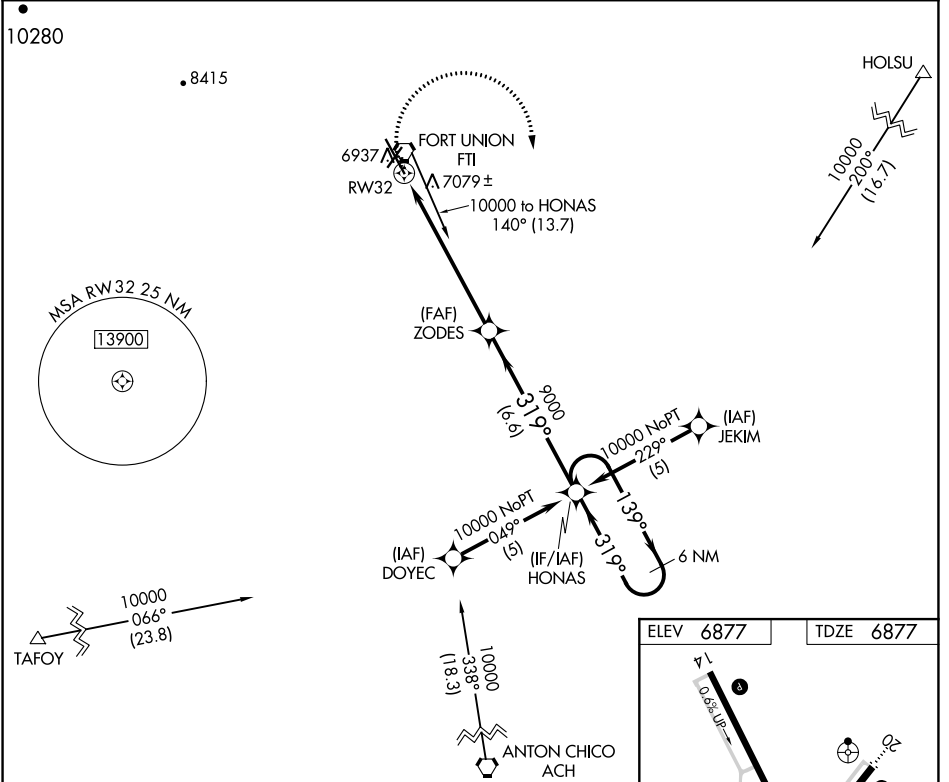
SW-1, 22 FEB 2024 to 21 MAR 2024

RNAV (GPS) RWY 32

LAS VEGAS MUNI (LVS)

| | | |
|------------------------|-----------------------------|---|
| APP CRS 319° | Rwy Idg TDZE Apt Elev | 8199 6877 6877 |
|------------------------|-----------------------------|---|

| | | |
|--|---|--|
| RNP APCH-GPS. | | MISSED APPROACH: Climbing right turn to 10000 direct HONAS and hold. |
| <p>▼ When local altimeter not received, used Santa Fe Rgnl altimeter setting and increase all MDA 200 feet; increase LNAV Cat C visibility to 1 7/8 SM and Circling Cat C visibility to 2 1/4 SM. VDP NA when using Santa Fe Muni altimeter setting.</p> | | |
| ASOS 118.525 | ALBUQUERQUE CENTER 132.8 346.35 | UNICOM 122.8 (CTAF) |



| CATEGORY | A | B | C | D |
|----------|--------------------|---|----------------------------|----|
| LNAV MDA | 7320-1 443 (500-1) | | 7320-1 1/4 443 (500-1 1/4) | NA |
| CIRCLING | 7420-1 543 (600-1) | | 7420-1 1/2 543 (600-1 1/2) | NA |

SW-1, 22 FEB 2024 to 21 MAR 2024


SW-1, 22 FEB 2024 to 21 MAR 2024

| | | | |
|---|------------------------|-----------------------------|---|
| VORTAC FTI 117.3 Chan 120 | APP CRS 192° | Rwy ldg TDZE Apt Elev | 5006 6867 6877 |
|---|------------------------|-----------------------------|---|

VOR RWY 20

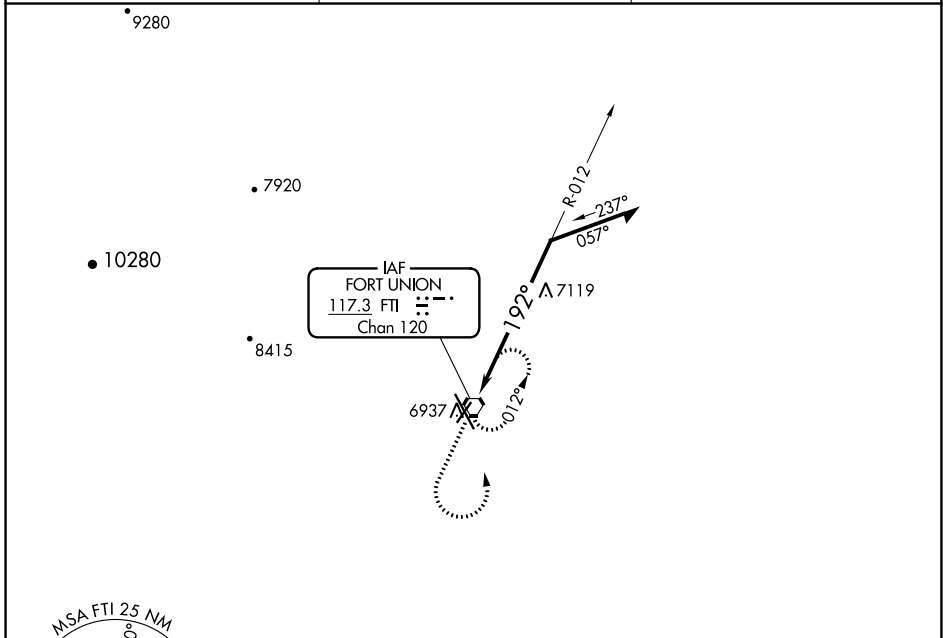
LAS VEGAS MUNI (LVS)


⚠ Inoperative table does not apply. When local altimeter not received, use Santa Fe Rgnl altimeter setting and increase all MDA 200 feet; increase Circling Cat C visibility $\frac{3}{4}$ SM.

ODALS 

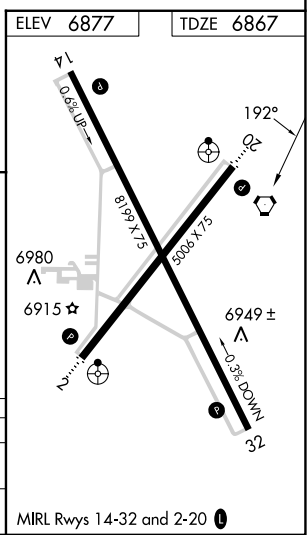
MISSED APPROACH: Climb to 8000 then climbing left turn to 9000 direct FTI VORTAC and hold.

| | | |
|------------------------|---|---------------------------------|
| ASOS 118.525 | ALBUQUERQUE CENTER 132.8 346.35 | UNICOM 122.8 (CTAF) 0 |
|------------------------|---|---------------------------------|



8000 ↑ 9000 ↶ FTI 

VDP NA when using Santa Fe Muni altimeter setting.



| CATEGORY | A | B | C | D |
|-------------------|--------|-------------|-------------------------|----|
| S-20 | 7420-1 | 553 (600-1) | 7420-1½ 553 (600-1½) | NA |
| C CIRCLING | 7420-1 | 543 (600-1) | 7420-1½ 543 (600-1½) | NA |

SW-1, 22 FEB 2024 to 21 MAR 2024

SW-1, 22 FEB 2024 to 21 MAR 2024