

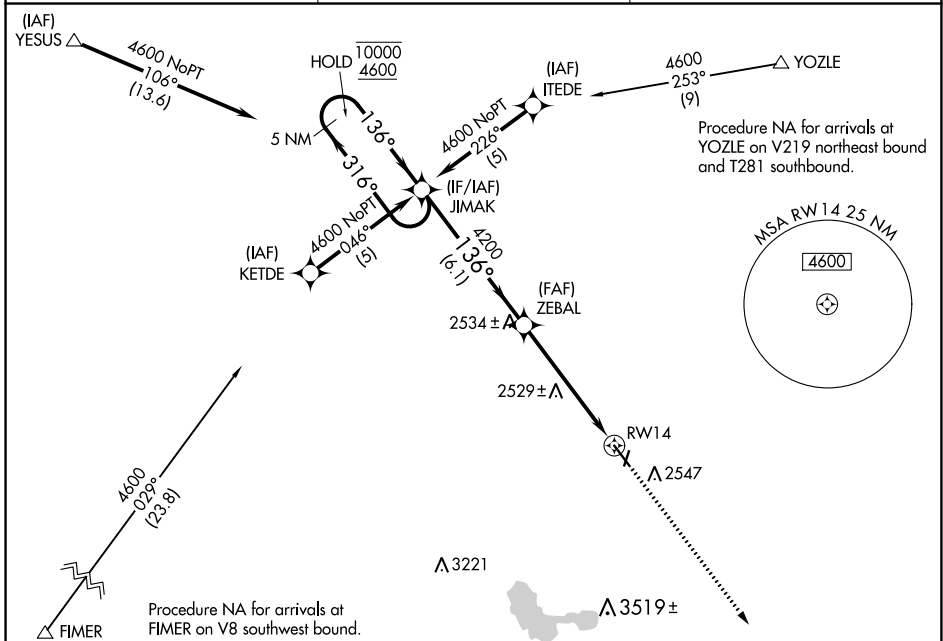
WAAS CH 61203 W14A	APP CRS 136°	Rwy Idg TDZE 2413 Apt Elev 2413
--	------------------------	---

RNAV (GPS) RWY 14

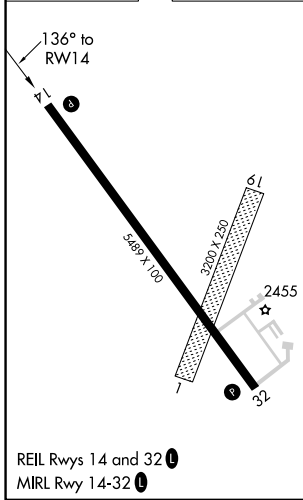
JIM KELLY FLD (LXN)

RNP APCH. ▼ Circling NA to Rwys 1 and 19.	MISSED APPROACH: Climb to 4600 direct TEPTY and hold.
--	---

AWOS-3 121.025	DENVER CENTER 132.7 226.675	UNICOM 123.0 (CTAF) 📻
--------------------------	---------------------------------------	--



ELEV 2413	TDZE 2413
-----------	-----------



5 NM Holding Pattern				JIMAK	ZEBAL	TEPTY
10000	4600	4200	4200	4200	4600	TEPTY
← 316°		→ 136°		→ 136°		→ 136°
GP 3.00°		TCH 40		*1 NM to RWY 14		RWY 14
6.1 NM		4.4 NM		1 NM		
CATEGORY	A	B	C	D		
LPV DA	2663-1 250 (300-1)					
LNAV MDA	2780-1 367 (400-1)				2780-1¼ 367 (400-1¼)	
C CIRCLING	2860-1 447 (500-1)	2940-1 527 (600-1)	2940-1½ 527 (600-1½)	2980-2 567 (600-2)		

NC-2, 22 FEB 2024 to 21 MAR 2024

NC-2, 22 FEB 2024 to 21 MAR 2024

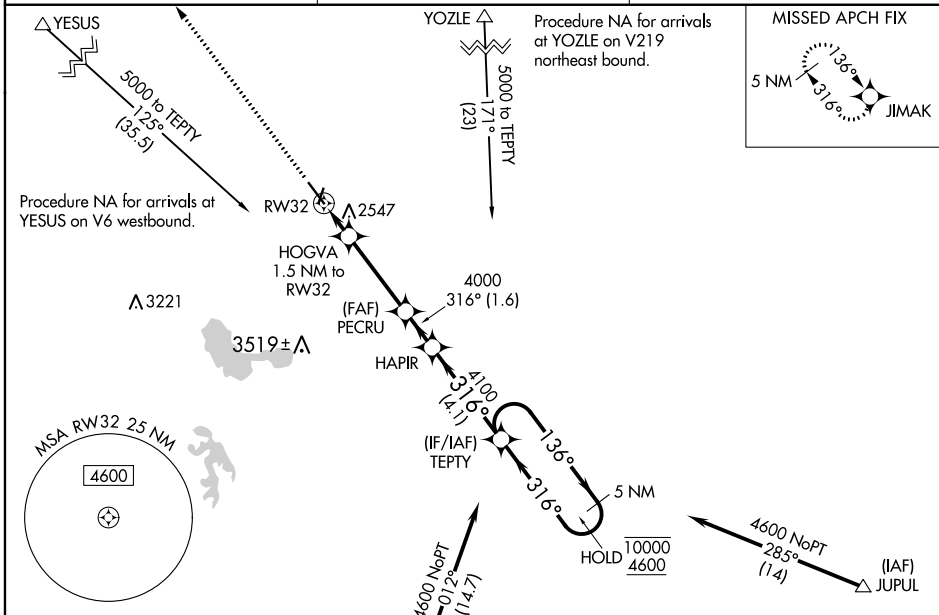
WAAS CH 49003 W32A	APP CRS 316°	Rwy Idg TDZE Apt Elev 5489 2408 2413
--	------------------------	--

RNAV (GPS) RWY 32

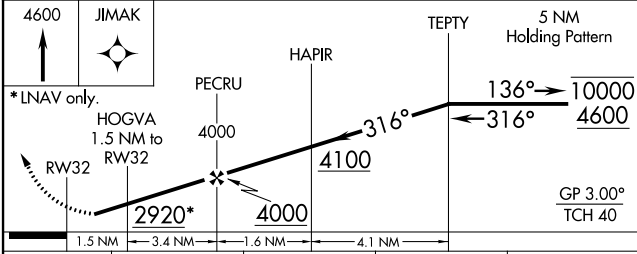
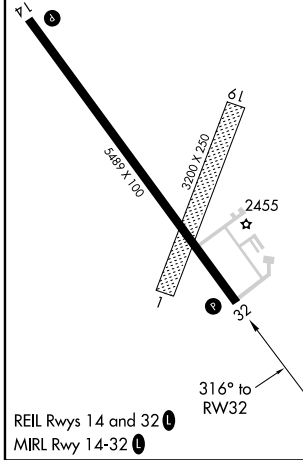
JIM KELLY FLD (LXN)

RNP APCH.	MISSED APPROACH: Climb to 4600 direct JIMAK and hold.
<p>⚠ Circling NA to Rwys 1 and 19. Rwy 32 helicopter visibility reduction below 3/4 SM NA. For uncompensated Baro-VNAV systems, LNAV/VNAV NA below -21°C or above 54°C.</p>	

AWOS-3 121.025	DENVER CENTER 132.7 226.675	UNICOM 123.0 (CTAF) 0
--------------------------	---------------------------------------	---------------------------------



ELEV 2413	TDZE 2408
------------------	------------------



CATEGORY	A	B	C	D
LPV DA	2658-1		250 (300-1)	
LNAV/VNAV DA	2708-1		300 (300-1)	
LNAV MDA	2800-1 392 (400-1)		2800-1½ 392 (400-1½)	
C CIRCLING	2860-1 447 (500-1)	2940-1 527 (600-1)	2940-1½ 527 (600-1½)	2980-2 567 (600-2)

NC-2, 22 FEB 2024 to 21 MAR 2024

NC-2, 22 FEB 2024 to 21 MAR 2024