


LOC I-MCC <b>109.7</b>	APP CRS <b>163°</b>	Rwy Idg <b>10599</b> TDZE <b>77</b> Apt Elev <b>77</b>
---------------------------	------------------------	--

# ILS or LOC RWY 16

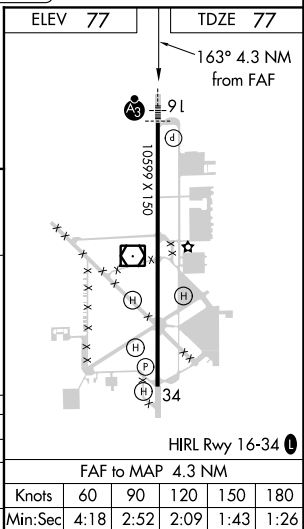
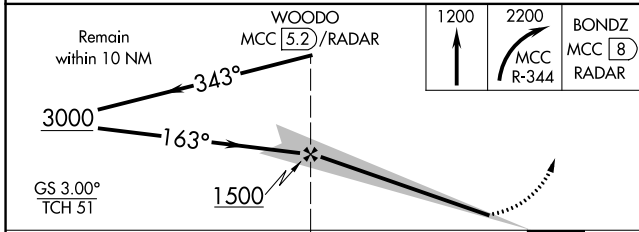
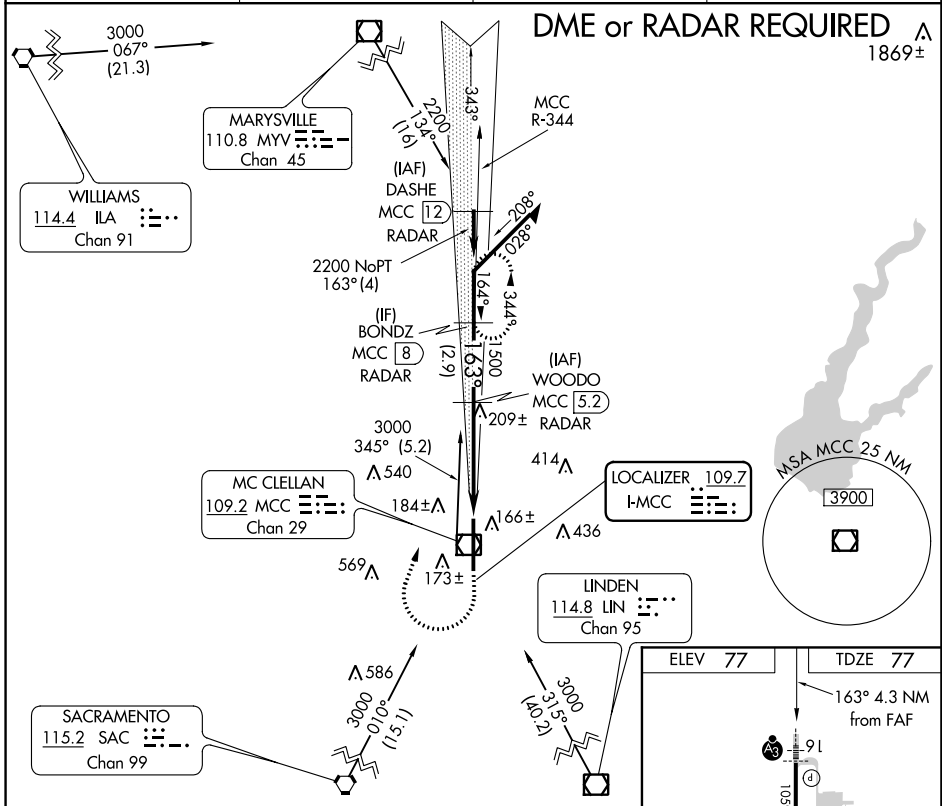
MC CLELLAN AIRFIELD (MCC)

**NA** DME from MCC VOR/DME. If local altimeter setting is not received, use Sacramento Intl altimeter setting and increase all DH/MDAs 40 feet.

**SSALR** 

**MISSED APPROACH:** Climb to 1200 then climbing right turn to 2200 via MCC VOR/DME R-344 to BONDZ/MCC 8 DME/RADAR and hold.

AWOS-3 <b>125.975</b>	NORCAL APP CON <b>127.4 317.5</b>	CINC DEL <b>119.825</b>	UNICOM <b>122.975 (CTAF)</b> 
--------------------------	--------------------------------------	----------------------------	---



CATEGORY	A	B	C	D
S-ILS 16		277-½	200 (200-½)	
S-LOC 16		460-½	383 (400-½)	460-¾ 383 (400-¾)
CIRCLING		NA		

SW-2, 17 JUN 2021 to 15 JUL 2021

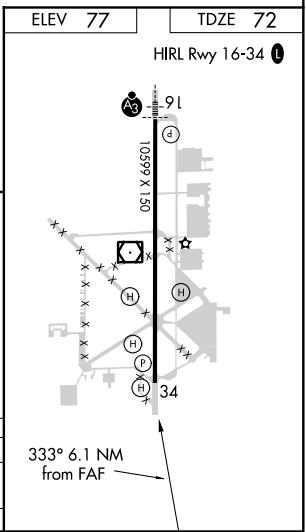
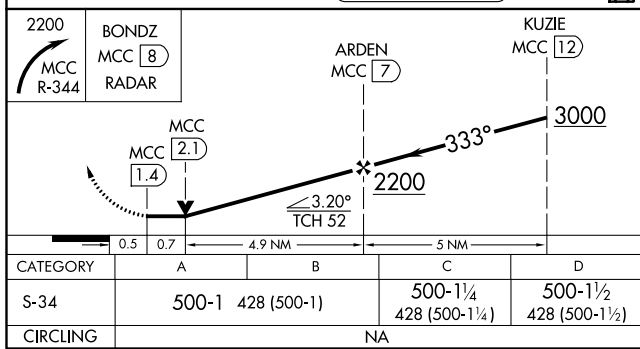
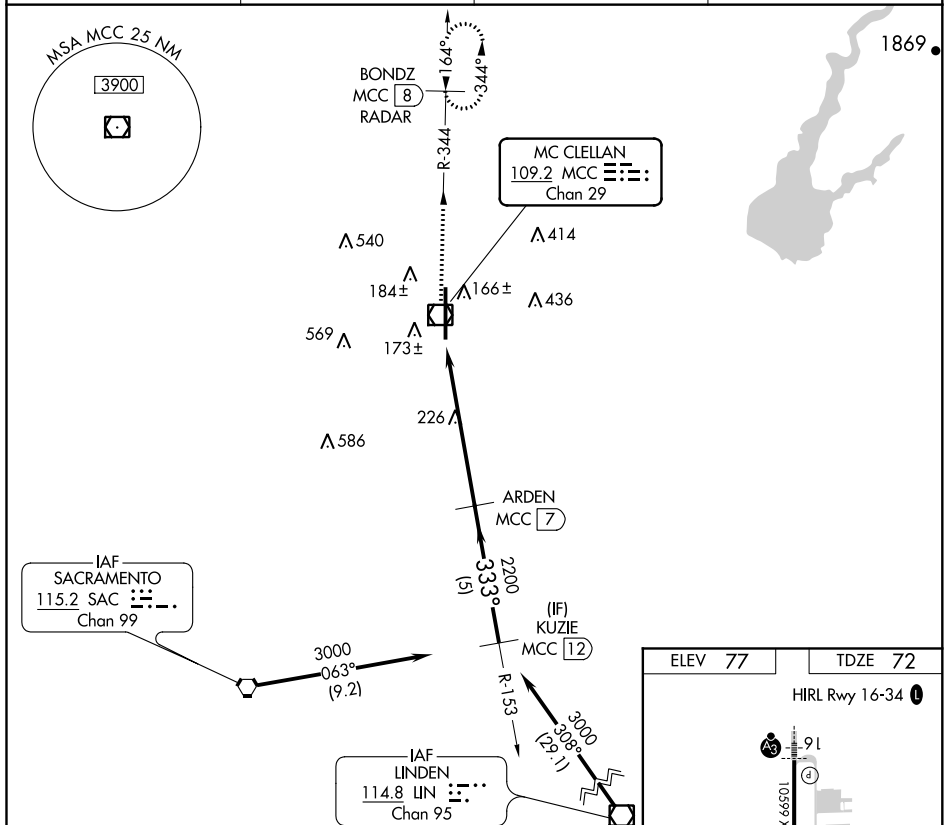
SW-2, 17 JUN 2021 to 15 JUL 2021

VOR/DME MCC <b>109.2</b> Chan 29	APP CRS <b>333°</b>	Rwy Idg <b>10599</b> TDZE <b>72</b> Apt Elev <b>77</b>
--	------------------------	--

# VOR/DME RWY 34

MC CLELLAN AIRFIELD (MCC)

<p><b>NA</b> VDP NA when using Sacramento Intl altimeter setting. When local altimeter setting not received, use Sacramento Intl altimeter setting and increase all MDAs 40 feet.</p>		<p>MISSED APPROACH: Climbing right turn to 2200 via MCC R-344 to BONDZ/MCC 8 DME/RADAR and hold.</p>	
AWOS-3 <b>125.975</b>	NORCAL APP CON <b>127.4 317.5</b>	CLNC DEL <b>119.825</b>	UNICOM <b>122.975 (CTAF)</b>



SW-2, 17 JUN 2021 to 15 JUL 2021

SW-2, 17 JUN 2021 to 15 JUL 2021