

LOC/DME I-MDW	APP CRS	Rwy Idg	6059
109.9	138°	TDZE	611
Chan 36		Apt Elev	620

ILS or LOC RWY 13C

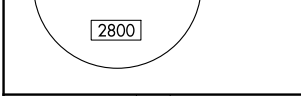
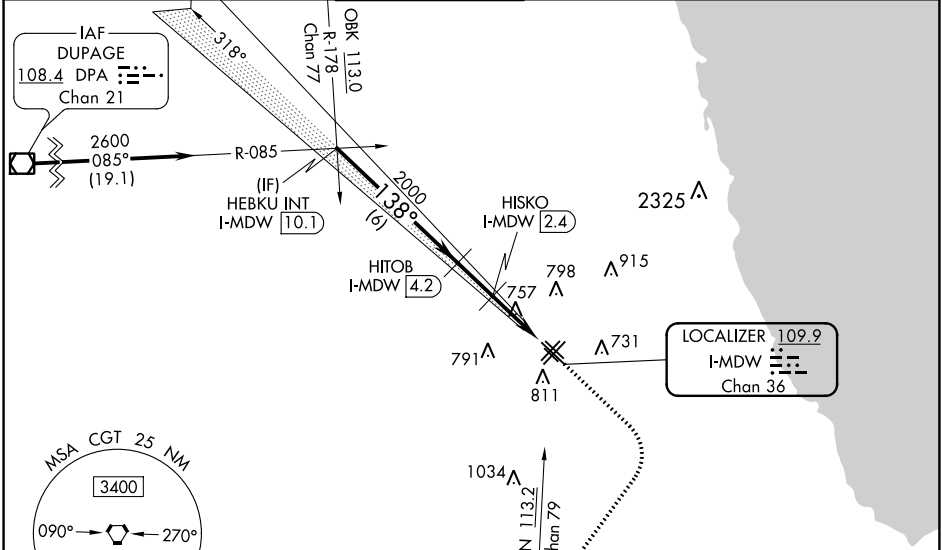
CHICAGO MIDWAY INTL (MDW)

DME required for LOC only.

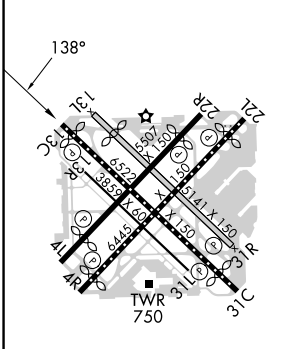
⚠ Circling to Rwy 31R NA at night.
⚠ Rwy 13C helicopter visibility reduction below RVR 4000 NA.

MISSED APPROACH: Climb to 1100 then climbing right turn to 2300 on heading 220° and on EON VORTAC R-001 until crossing IGENCY INT/EON 20 DME then climb to 2600 to EON VORTAC and hold.

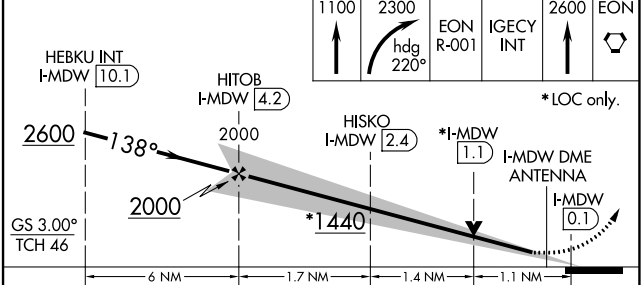
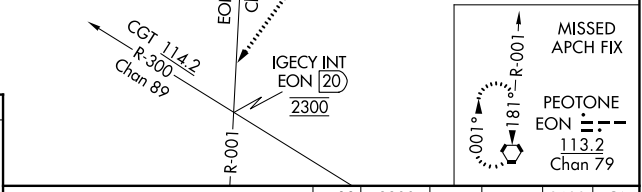
D-ATIS	CHICAGO APP CON	MIDWAY TOWER	GND CON	CLNC DEL	CPDLC
132.75	128.2 388.0	135.2 269.125	118.075	124.625	



ELEV 620	D	TDZE 611
----------	----------	----------



HIRL Rws 13C-31C and 4R-22L
 MIRL Rws 4L-22R, 13L-31R, and 13R-31L
 REIL Rws 4R, 22L, and 31C
 RLLS Rws 13C and 31C



CATEGORY	A	B	C	D
S-ILS 13C	861/40 250 (300-3/4)			
S-LOC 13C	1020/55	409 (400-1)	1020/60	409 (400-1 1/4)
C CIRCLING	1120-1	500 (500-1)	1340-2 720 (800-2)	1340-2 1/4 720 (800-2 1/4)

EC-3, 22 FEB 2024 to 21 MAR 2024

EC-3, 22 FEB 2024 to 21 MAR 2024

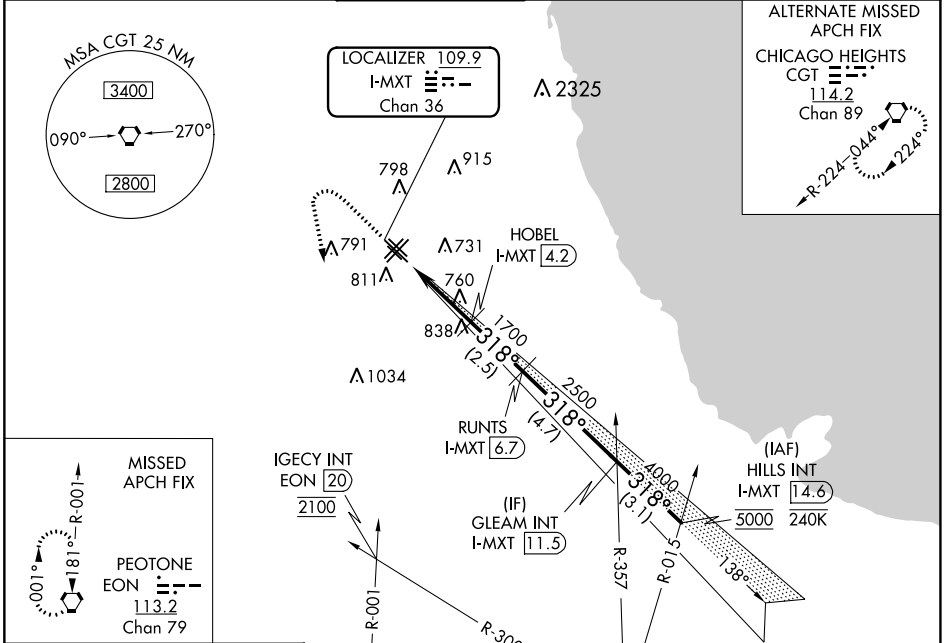
LOC/DME I-MXT 109.9 Chan 36	APP CRS 318°	Rwy Idg 5826 TDZE 613 Apt Elev 620
---	------------------------	---

ILS or LOC RWY 31C

CHICAGO MIDWAY INTL (MDW)

DME and RADAR required.	MISSED APPROACH: Climb to 1100, then climbing left turn to 2100 on heading 150° and on EON VORTAC R-001 until crossing IGECY INT/EON 20 DME, then climb to 2600 to EON VORTAC and hold.
Circling Rwy 31R NA at night. Rwy 31C helicopter visibility reduction below RVR 4000 NA.	

D-ATIS 132.75	CHICAGO APP CON 128.2 353.875	MIDWAY TOWER 135.2 269.125	GND CON 118.075	CLNC DEL 124.625	CPDLC
-------------------------	---	--------------------------------------	---------------------------	----------------------------	-------

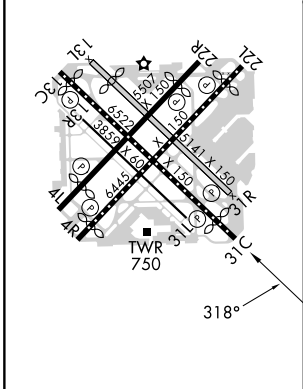


MISSED APCH FIX

PEOTONE EON I-MXT 113.2 Chan 79

ELEV 620 **D** TDZE 613

HIRL Rws 4R-22L and 13C-31C
MIRL Rws 4L-22R, 13L-31R, and 13R-31L
REIL Rws 4R, 22L, and 31C
RLS Rws 13C and 31C



1100	2100	2600	EON	HILLS INT I-MXT 14.6
↑	hdg 150°	↑	↑	↑
EON R-001	IGECY INT	EON	HOBEL I-MXT 4.2	GLEAM INT I-MXT 11.5
VGSB and ILS glidepath not coincident (VGSB Angle 3.00/TCH 63).				
	IGECY INT I-MXT 1	1700	2500	4000
		1700	2500	4000
	1.1 NM	2.2 NM	2.5 NM	4.7 NM
				3.1 NM
GS 3.00° TCH 48				
CATEGORY	A	B	C	D
S-LS 31C	863/40		250 (300- ³ / ₄)	
S-LOC 31C	1020/55	407 (400-1)	1020/60	407 (400-1¼)
C CIRCLING	1120-1	500 (500-1)	1340-2	1340-2¼
			720 (800-2)	720 (800-2¼)

EC-3, 22 FEB 2024 to 21 MAR 2024

EC-3, 22 FEB 2024 to 21 MAR 2024

LOC/DME I-HKH 111.5 Chan 52	APP CRS 047°	Rwy Idg TDZE 619 Apt Elev 620
---	------------------------	---

ILS or LOC RWY 4R

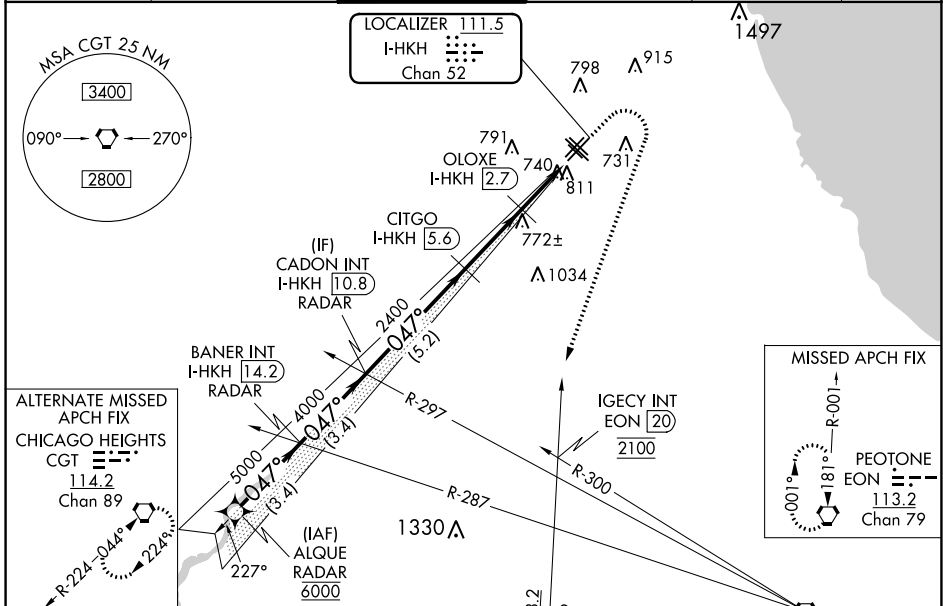
CHICAGO MIDWAY INTL (MDW)

RNAV 1-GPS or RADAR required for procedure entry. DME required for LOC only.

▼ Circling Rwy 31R NA at night.
▲ Rwy 4R helicopter visibility reduction below RVR 4000 NA.

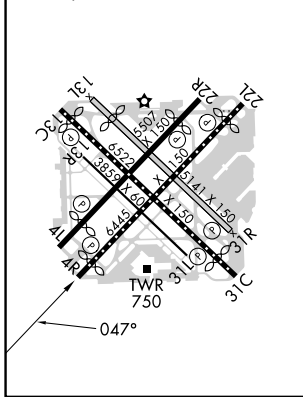
MISSED APPROACH: Climb to 1100 then climbing right turn to 2100 on heading 230° and on EON VORTAC R-001 until crossing IGECY INT/EON 20 DME, then climb to 2600 to EON VORTAC and hold.

D-ATIS 132.75	CHICAGO APP CON 128.2 353.875	MIDWAY TOWER 135.2 269.125	GND CON 118.075	CLNC DEL 124.625	CPDLC
-------------------------	---	--------------------------------------	---------------------------	----------------------------	-------



ELEV 620	D	TDZE 619
-----------------	----------	-----------------

HIRL Rws 4R-22L and 13C-31C
MIRL Rws 4L-22R, 13L-31R, and 13R-31L
REIL Rws 4R, 22L, and 31C
RLS Rws 13C and 31C



VGSI and ILS glidepath not coincident (VGSI Angle 3.00/TCH 66).

ALQUE RADAR	BANER INT I-HKH [14.2] RADAR	CADON INT I-HKH [10.8] RADAR	CITGO I-HKH [5.6] OLOXE I-HKH [2.7] *I-HKH [1.2] I-HKH [0.2]	1100	2100	2600	EON
				↑	hdg 230° EON R-001	↑	IGECY INT
6000	5000	4000	2400				*LOC only
GS 3.00° TCH 50							
	3.4 NM	3.4 NM	5.2 NM	2.9 NM	1.5 NM	1 NM	
CATEGORY	A	B	C	D			
S-ILS 4R	869/40	250 (300-¾)	869/50	250 (300-1)			
S-LOC 4R	1000/55	381 (400-1)	1000/60	381 (400-1¼)			
C CIRCLING	1120-1	500 (500-1)	1340-2 720 (800-2)	1340-2¼ 720 (800-2¼)			

EC-3, 22 FEB 2024 to 21 MAR 2024

EC-3, 22 FEB 2024 to 21 MAR 2024

APP CRS	Rwy Idg	4388
138°	TDZE	609
	Apt Elev	620

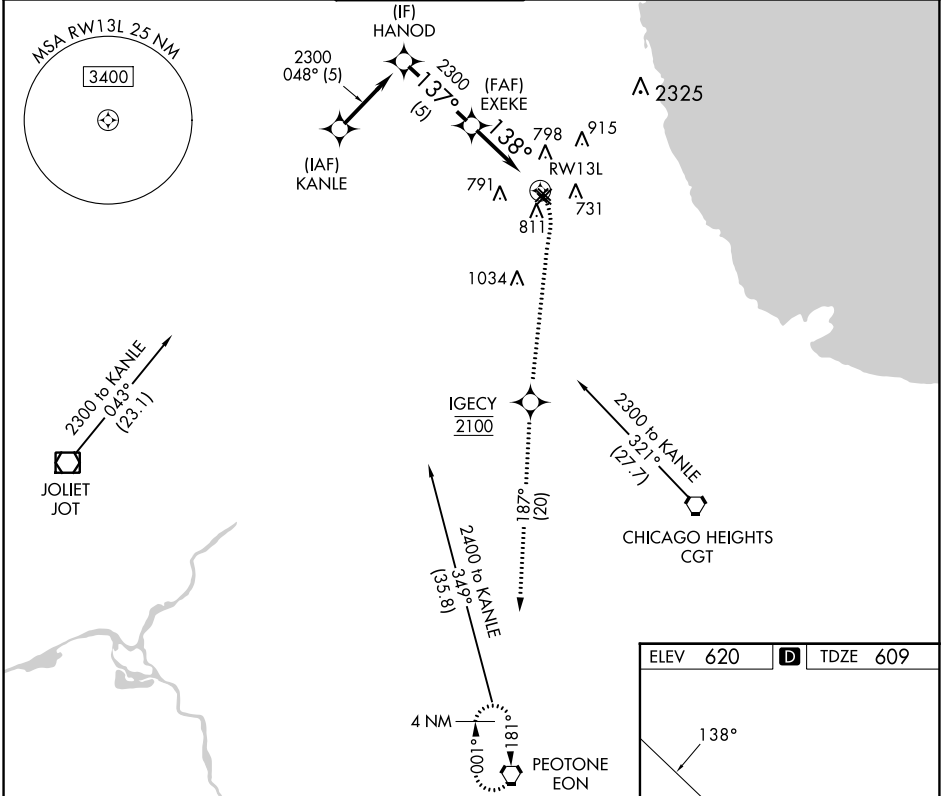
RNAV (GPS) RWY 13L

CHICAGO MIDWAY INTL (MDW)

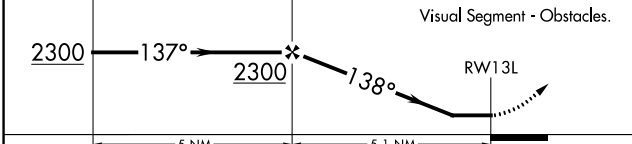
▼ Circling to Rwy 31R NA at night.
Rwy 13L helicopter visibility reduction below 3/4 SM NA.
DME/DME RNP-0.3 NA.

MISSED APPROACH: Climbing right turn to 2100 direct IGECY then climb to 2600 on track 187° to EON VORTAC and hold.

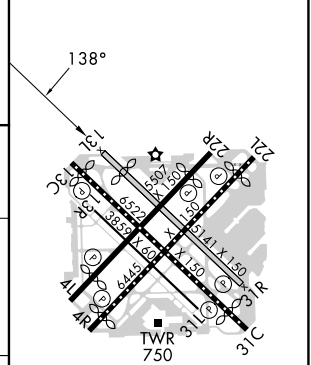
D-ATIS 132.75	CHICAGO APP CON 128.2 353.875	MIDWAY TOWER 135.2 269.125	GND CON 118.075	CLNC DEL 124.625	CPDLC
-------------------------	---	--------------------------------------	---------------------------	----------------------------	-------



HANOD	EXEKE	2100	IGECY	2600	EON
Visual Segment - Obstacles.					



ELEV 620	D	TDZE 609
----------	----------	----------



CATEGORY	A	B	C	D
LNNAV MDA	1080-1	471 (500-1)	1080-1 $\frac{3}{8}$	471 (500-1 $\frac{3}{8}$)
C CIRCLING	1120-1	500 (500-1)	1340-2 720 (800-2)	1340-2 $\frac{1}{4}$ 720 (800-2 $\frac{1}{4}$)

HIRL Rwy 4R-22L and 13C-31C
MIRL Rwy 4L-22R, 13L-31R, and 13R-31L
REIL Rwy 4R, 22L, and 31C
RLS Rwy 13C and 31C

EC-3, 22 FEB 2024 to 21 MAR 2024

EC-3, 22 FEB 2024 to 21 MAR 2024

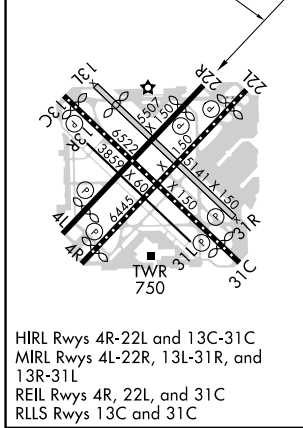
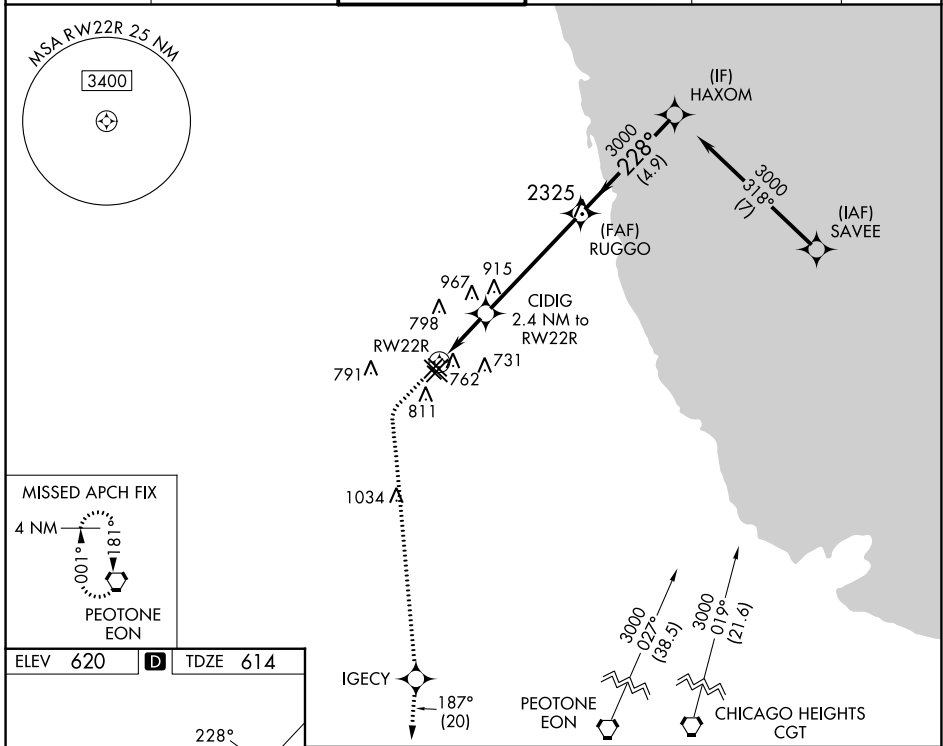
WAAS CH 56641 W22B	APP CRS 228°	Rwy Idg TDZE 614 Apt Elev 620
--	------------------------	---

RNAV (GPS) RWY 22R

CHICAGO MIDWAY INTL (MDW)

RNP APCH.	MISSED APPROACH: Climb to 1100 then climbing left turn to 2600 direct VORTAC and on track 187° to EON VORTAC and hold.
<p>⚠ Circling to Rwy 31R NA at night. For uncompensated Baro-VNAV systems, LNAV/VNAV NA below -19°C or above 54°C.</p> <p>⚠ Rwy 22R helicopter visibility reduction below 3/4 SM NA.</p>	

D-ATIS 132.75	CHICAGO APP CON 128.2 388.0	MIDWAY TOWER 135.2 269.125	GND CON 118.075	CLNC DEL 124.625	CPDLC
-------------------------	---------------------------------------	--------------------------------------	---------------------------	----------------------------	-------



1100	2600	IGECY	EON	VGSi and RNAV glidepath not coincident (VGSi Angle 3.00/TCH 35).	
*LNAV only.		CIDIG 2.4 NM to RW22R		RUGGO	HAXOM
RW22R		*1.2 NM to RW22R		3000	3000
1.2 NM		1.2 NM		4.9 NM	
CATEGORY	A	B	C	D	
LPV DA	893-7/8		279 (300-7/8)		
LNAV/VNAV DA	1005-1/8		391 (400-1/8)		
LNAV MDA	1020-1	406 (400-1)	1020-1/8	406 (400-1/8)	
C CIRCLING	1120-1	500 (500-1)	1340-2	1340-2 1/4 (800-2 1/4)	

EC-3, 22 FEB 2024 to 21 MAR 2024

EC-3, 22 FEB 2024 to 21 MAR 2024

APP CRS	Rwy Idg	5141
318°	TDZE	610
	Apt Elev	620

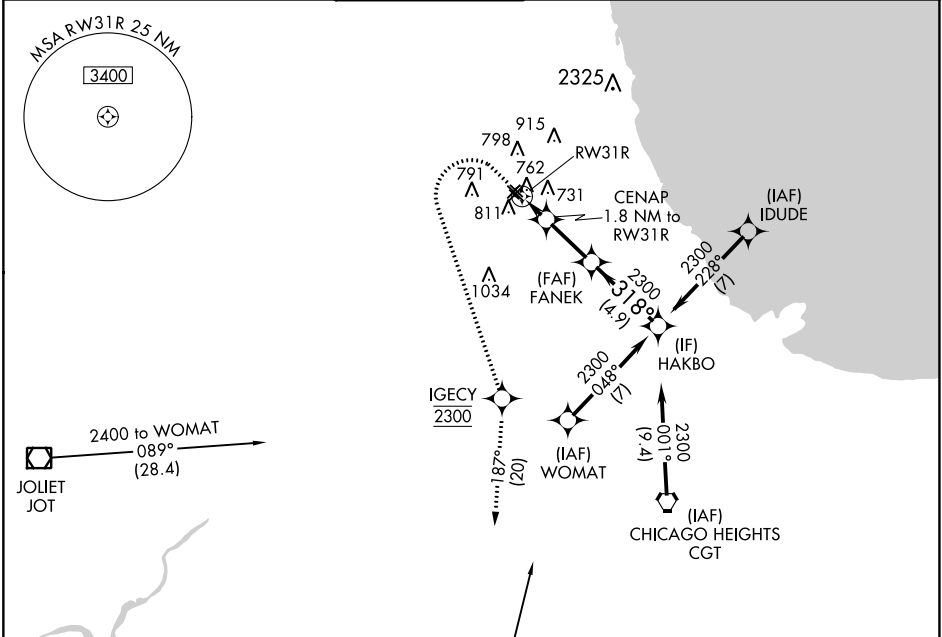
RNAV (GPS) RWY 31R

CHICAGO MIDWAY INTL (MDW)

RNP APCH.
 ▼ Rwy 31R helicopter visibility reduction below 1 SM NA.
 ▲ Straight-in Rwy 31R and Circling Rwy 31R NA at night.

MISSED APPROACH: Climb to 1100 then climbing left turn to 2300 direct IGECY then climb to 2600 on track 187° to EON VORTAC and hold.

D-ATIS	CHICAGO APP CON	MIDWAY TOWER	GND CON	CLNC DEL	CPDLC
132.75	128.2 388.0	135.2 269.125	118.075	124.625	

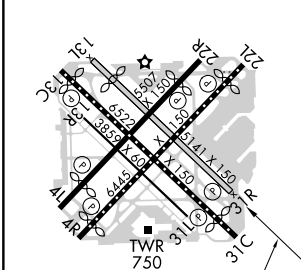


EC-3, 22 FEB 2024 to 21 MAR 2024

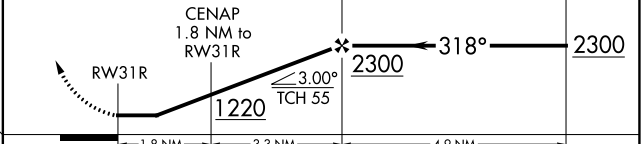
EC-3, 22 FEB 2024 to 21 MAR 2024

ELEV 620	D	TDZE 610
----------	----------	----------

HIRL Rwy 4R-22L and 13C-31C
 MIRL Rwy 4L-22R, 13L-31R, and 13R-31L
 REIL Rwy 4R, 22L, and 31C
 RLLS Rwy 13C and 31C



1100	2300	IGECY	2600	EON	VGSI and descent angles not coincident (VGSI Angle 3.00/TCH 44).
↑	↙	✧	↑	⬠	
		fr 187°			



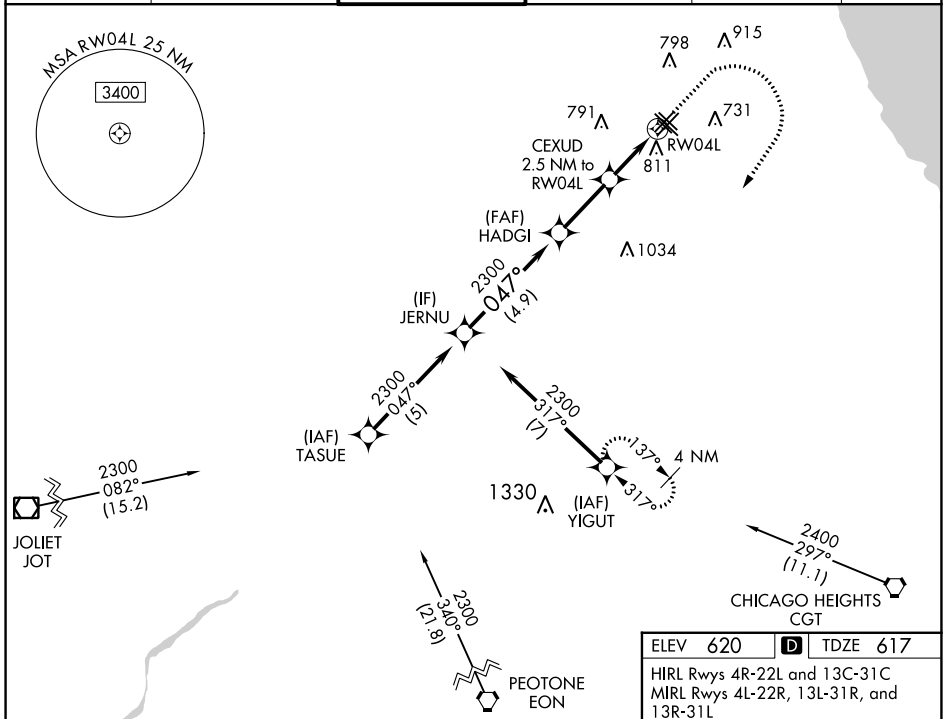
CATEGORY	A	B	C	D
LNAV MDA	1020-1 410 (400-1)		1020-1½ 410 (400-1½)	
C CIRCLING	1120-1 500 (500-1)		1340-2 720 (800-2)	1340-2¼ 720 (800-2¼)

WAAS CH 97741 W04B	APP CRS 047°	Rwy Idg TDZE 617 Apt Elev 620
--	------------------------	---

RNAV (GPS) RWY 4L

CHICAGO MIDWAY INTL (MDW)

RNP APCH.			MISSED APPROACH: Climb to 1100 then climbing right turn to 2400 direct YIGUT and hold.		
▼ Circling to Rwy 31R NA at night.					
▲ For uncompensated Baro-VNAV systems, LNAV/VNAV NA below -19°C or above 54°C. Rwy 4L helicopter visibility reduction below ¾ SM NA.					
D-ATIS 132.75	CHICAGO APP CON 128.2 388.0	MIDWAY TOWER 135.2 269.125	GND CON 118.075	CLNC DEL 124.625	CPDLC



VGSI and RNAV glidepath not coincident (VGSI Angle 3.00/TCH 39).

JERNU	HADGI	CEXUD	YIGUT
2300	2300	2300	2400
GP 3.00° TCH 55	047°	1460	*LNAV only.
4.9 NM	2.6 NM	1.2 NM	1.3 NM
1100	2400	YIGUT	

CATEGORY	A	B	C	D
LPV DA		867-¾	250 (300-¾)	
LNAV/VNAV DA		1021-1½	404 (500-1½)	
LNAV MDA	1080-1	463 (500-1)	1080-1¾	463 (500-1¾)
CIRCLING	1120-1	500 (500-1)	1340-2 720 (800-2)	1340-2¼ 720 (800-2¼)

ELEV 620 **D** TDZE 617

HIRL Rws 4R-22L and 13C-31C
MIRL Rws 4L-22R, 13L-31R, and 13R-31L
REIL Rws 4R, 22L, and 31C
RLS Rws 13C and 31C

EC-3, 22 FEB 2024 to 21 MAR 2024

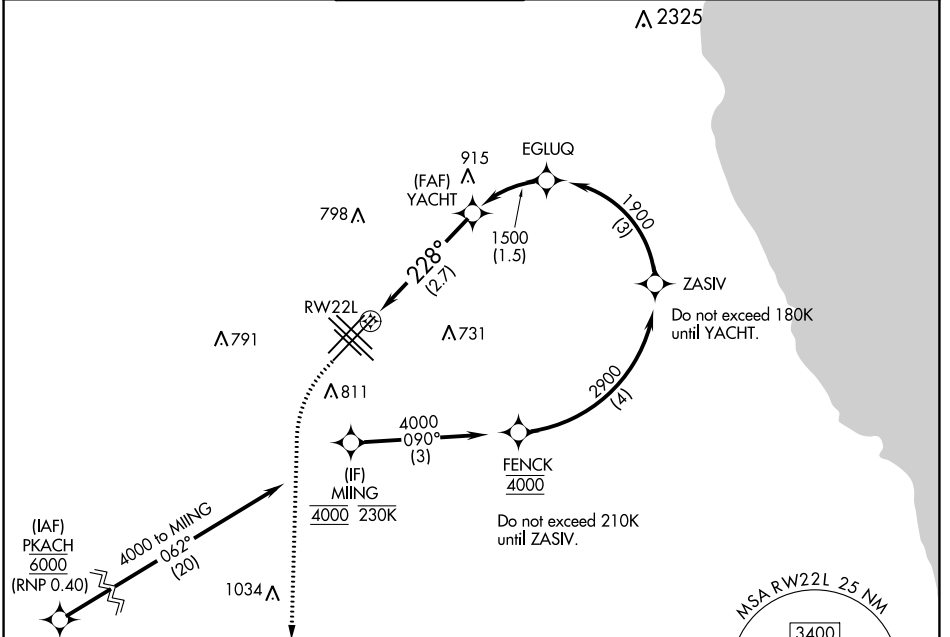
EC-3, 22 FEB 2024 to 21 MAR 2024

APP CRS	Rwy Idg	5810
228°	TDZE	611
	Apt Elev	620

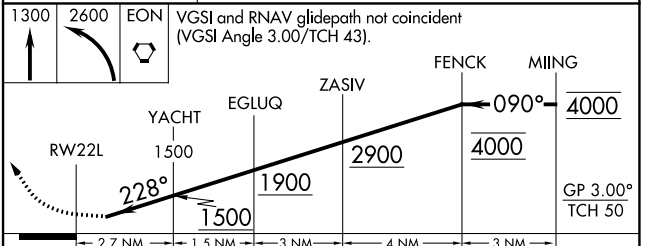
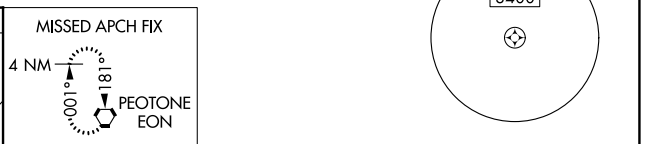
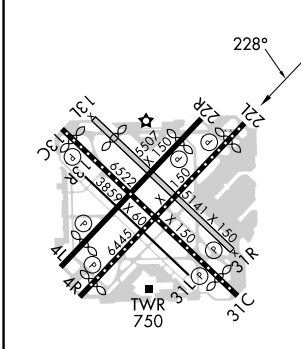
RNAV (RNP) X RWY 22L

CHICAGO MIDWAY INTL (MDW)

RNP AR APCH - GPS.			MISSED APPROACH: Climb to 1300 then climbing left turn to 2600 direct EON VORTAC and hold.		
For uncompensated Baro-VNAV systems, procedure NA below -20°C or above 54°C.					
D-ATIS	CHICAGO APP CON	MIDWAY TOWER	GND CON	CLNC DEL	CPDLC
132.75	128.2 353.875	135.2 269.125	118.075	124.625	



ELEV 620	D	TDZE 611
----------	----------	----------



MIRL Rwy's 4L-22R, 13L-31R and 13R-31L
 HIRL Rwy's 4R-22L and 13C-31C
 REIL Rwy's 4R, 22L and 31C
 RLLS Rwy's 13C and 31C

CATEGORY	A	B	C	D
RNP 0.10 DA		923/45	312 (400-¾)	
RNP 0.20 DA		949/50	338 (400-1)	
RNP 0.30 DA		992/60	381 (400-1½)	

AUTHORIZATION REQUIRED

EC-3, 22 FEB 2024 to 21 MAR 2024

EC-3, 22 FEB 2024 to 21 MAR 2024

APP CRS	Rwy Idg	6059
138°	TDZE	611
	Apt Elev	620

RNAV (RNP) Y RWY 13C

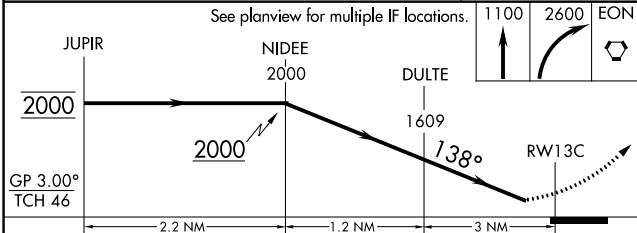
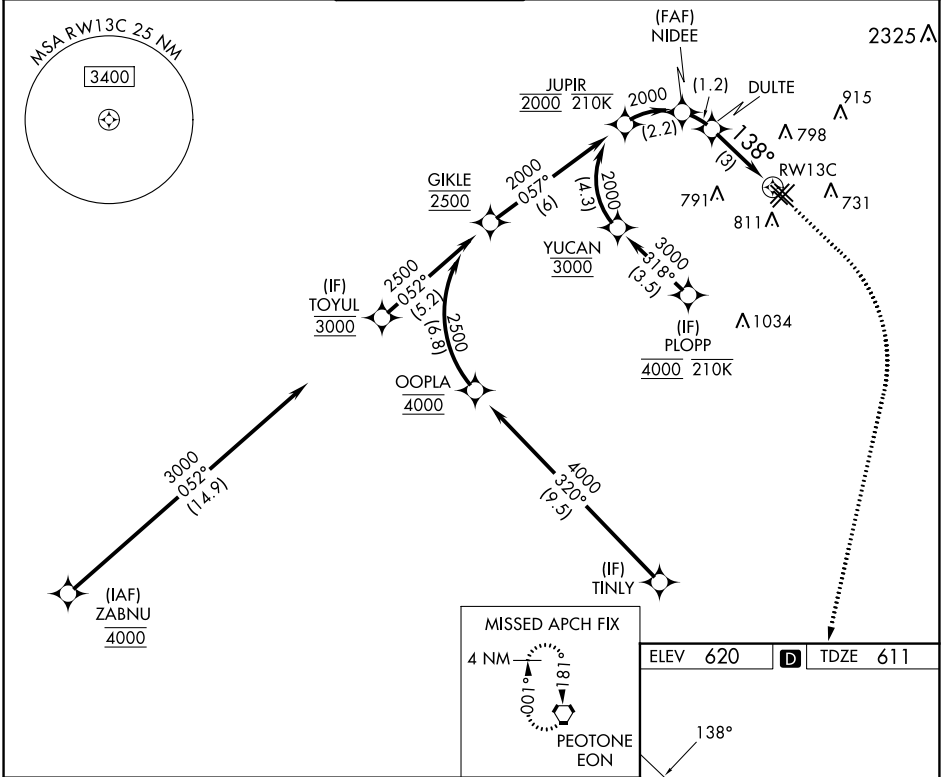
CHICAGO MIDWAY INTL (MDW)

RNP AR APCH - GPS.

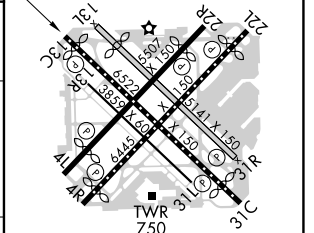
▼ For uncompensated Baro-VNAV systems, procedure NA below -21°C or above 54°C.

MISSED APPROACH: Climb to 1100 then climbing right turn to 2600 direct EON VORTAC and hold.

D-ATIS	CHICAGO APP CON	MIDWAY TOWER	GND CON	CLNC DEL	CPDLC
132.75	128.2 353.875	135.2 269.125	118.075	124.625	



CATEGORY	A	B	C	D
RNP 0.10 DA		885/45	274 (300-¾)	
RNP 0.20 DA		1005/60	394 (400-1¼)	
RNP 0.30 DA		1051-1¼	440 (500-1¼)	



HIRL Rwy 4R-22L and 13C-31C

MIRL Rwy 4L-22R, 13L-31R, and 13R-31L

REIL Rwy 4R, 22L, and 31C

RLS Rwy 13C and 31C

AUTHORIZATION REQUIRED

CHICAGO, ILLINOIS

AL-81 (FAA)

23278

APP CRS 228°	Rwy Idg TDZE Apt Elev	5810 611 620
------------------------	-----------------------------	---

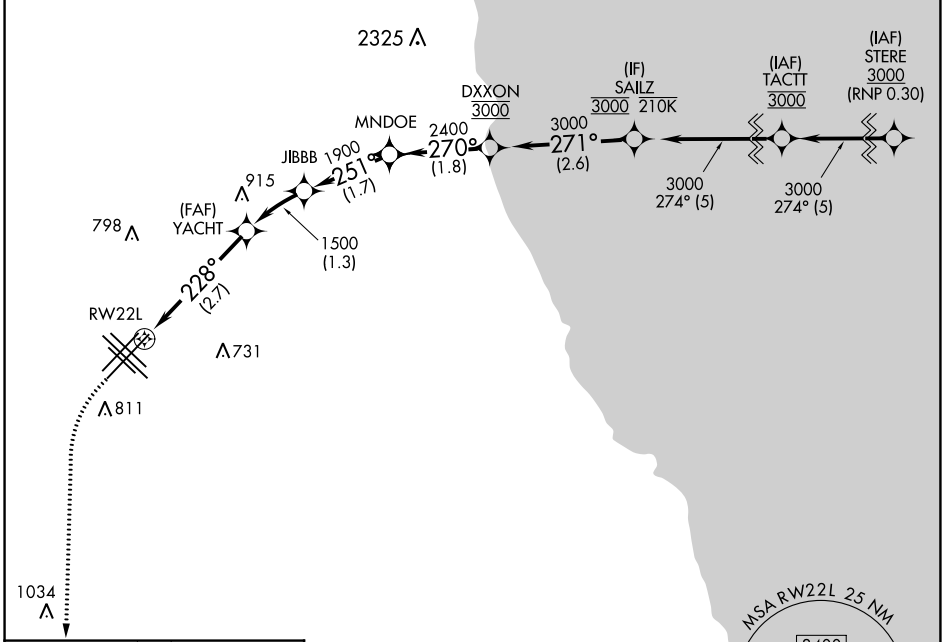
RNAV (RNP) Y RWY 22L

CHICAGO MIDWAY INTL (MDW)

RNP AR APCH - GPS.
 For uncompensated Baro-VNAV systems, procedure NA below -20°C or above 54°C.

MISSED APPROACH: Climb to 1300 then climbing left turn to 2600 direct EON VORTAC and hold.

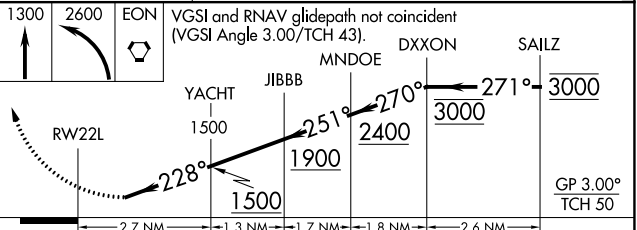
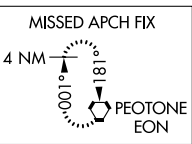
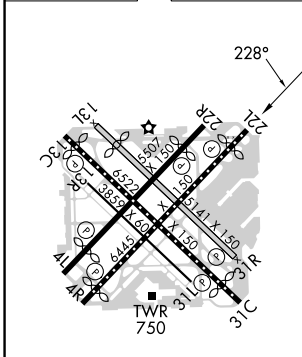
D-ATIS 132.75	CHICAGO APP CON 128.2 353.875	MIDWAY TOWER 135.2 269.125	GND CON 118.075	CLNC DEL 124.625	CPDLC
-------------------------	---	--------------------------------------	---------------------------	----------------------------	-------



EC-3, 22 FEB 2024 to 21 MAR 2024

EC-3, 22 FEB 2024 to 21 MAR 2024

ELEV 620 **D** TDZE 611



CATEGORY	A	B	C	D
RNP 0.10 DA		923/45	312 (400-7/8)	
RNP 0.20 DA		949/50	338 (400-1)	
RNP 0.30 DA		992/60	381 (400-1 1/2)	

AUTHORIZATION REQUIRED

CHICAGO, ILLINOIS
 Amdt 4 08SEP22

41°47'N-87°45'W

CHICAGO MIDWAY INTL (MDW)
RNAV (RNP) Y RWY 22L

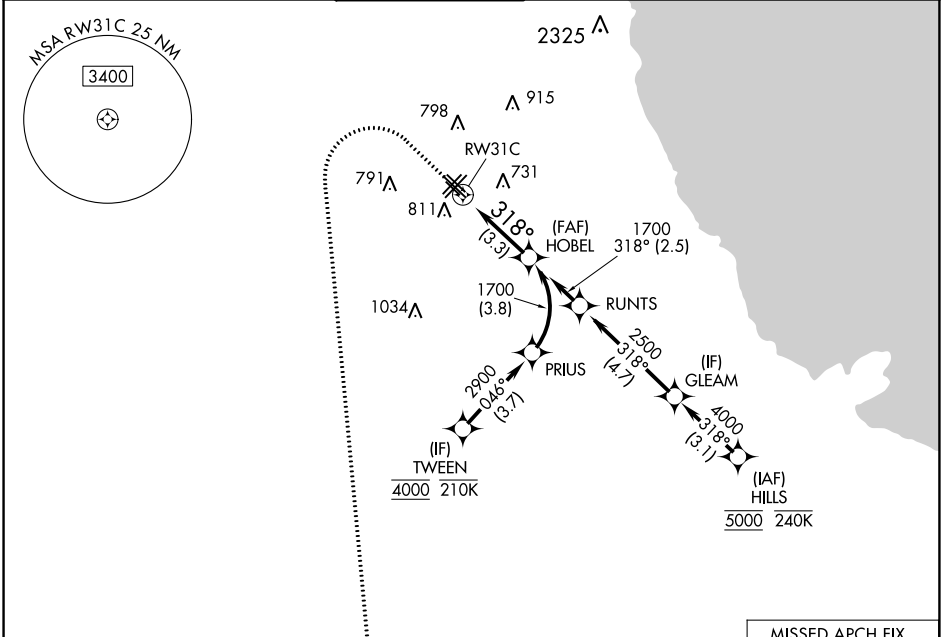
APP CRS	Rwy Idg	5826
318°	TDZE	613
	Apt Elev	620

RNAV (RNP) Y RWY 31C

CHICAGO MIDWAY INTL (MDW)

RNP AR APCH - GPS.			MISSED APPROACH: Climb to 1100 then climbing left turn to 2600 direct EON VORTAC and hold.		
For uncompensated Baro-VNAV systems, procedure NA below -20°C or above 54°C.					

D-ATIS	CHICAGO APP CON	MIDWAY TOWER	GND CON	CLNC DEL	CPDLC
132.75	128.2 353.875	135.2 269.125	118.075	124.625	

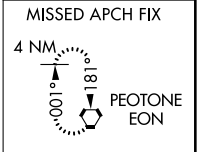
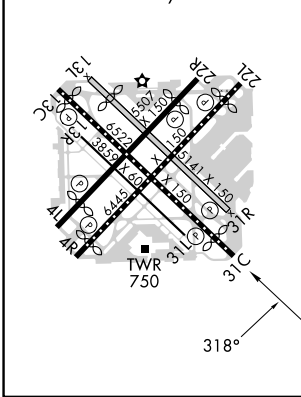


EC-3, 22 FEB 2024 to 21 MAR 2024

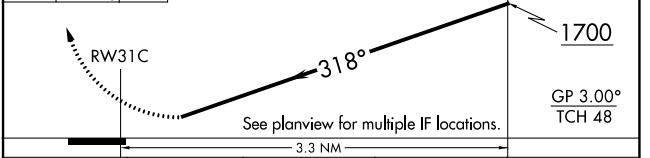
EC-3, 22 FEB 2024 to 21 MAR 2024

ELEV	620	D	TDZE	613
------	-----	----------	------	-----

HIRL Rwy 4R-22L and 13C-31C
 MIRL Rwy 4L-22R, 13L-31R, and 13R-31L
 REIL Rwy 4R, 22L, and 31C
 RLLS Rwy 13C and 31C



1100	2600	EON	VGSJ and RNAV glidepath not coincident (VGSJ Angle 3.00/TCH 63).	HOBEL 1700
------	------	-----	--	------------



CATEGORY	A	B	C	D
RNP 0.10 DA		905/45	292 (300- $\frac{1}{4}$)	
RNP 0.20 DA		965/55	352 (400-1)	
RNP 0.30 DA		1029/60	416 (500-1 $\frac{1}{4}$)	

AUTHORIZATION REQUIRED

APP CRS	Rwy Idg	5927
047°	TDZE	619
	Apt Elev	620

RNAV (RNP) Y RWY 4R

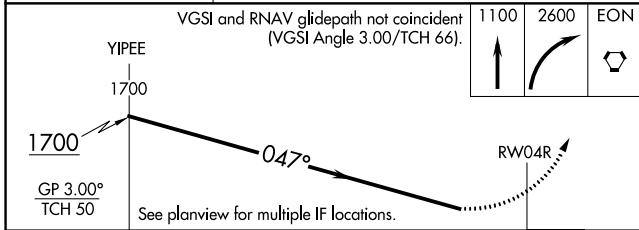
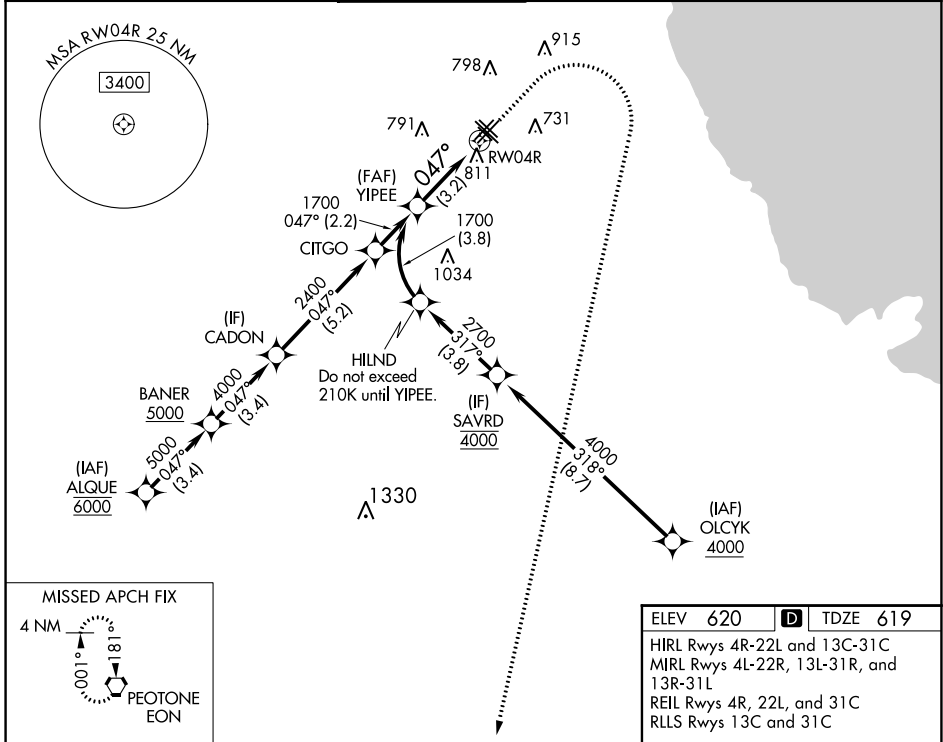
CHICAGO MIDWAY INTL (MDW)

RNP AR APCH - GPS.

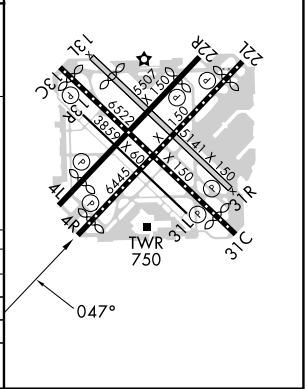
▼ For uncompensated Baro-VNAV systems, procedure NA below -20°C or above 54°C.

MISSED APPROACH: Climb to 1100 then climbing right turn to 2600 direct EON VORTAC and hold.

D-ATIS	CHICAGO APP CON	MIDWAY TOWER	GND CON	CLNC DEL	CPDLC
132.75	128.2 353.875	135.2 269.125	118.075	124.625	



ELEV 620	D	TDZE 619
HIRL Rwy 4R-22L and 13C-31C		
MIRL Rwy 4L-22R, 13L-31R, and 13R-31L		
REIL Rwy 4R, 22L, and 31C		
RLS Rwy 13C and 31C		



CATEGORY	A	B	C	D
RNP 0.10 DA		951/50	332 (400-1)	
RNP 0.20 DA		1020/60	401 (400-1½)	
RNP 0.30 DA		1077-1⅜	458 (500-1⅝)	

AUTHORIZATION REQUIRED

EC-3, 22 FEB 2024 to 21 MAR 2024

EC-3, 22 FEB 2024 to 21 MAR 2024

WAAS CH 50541 W13A	APP CRS 138°	Rwy Idg TDZE Apt Elev	6059 611 620
--	------------------------	-----------------------------	---

RNAV (GPS) Z RWY 13C

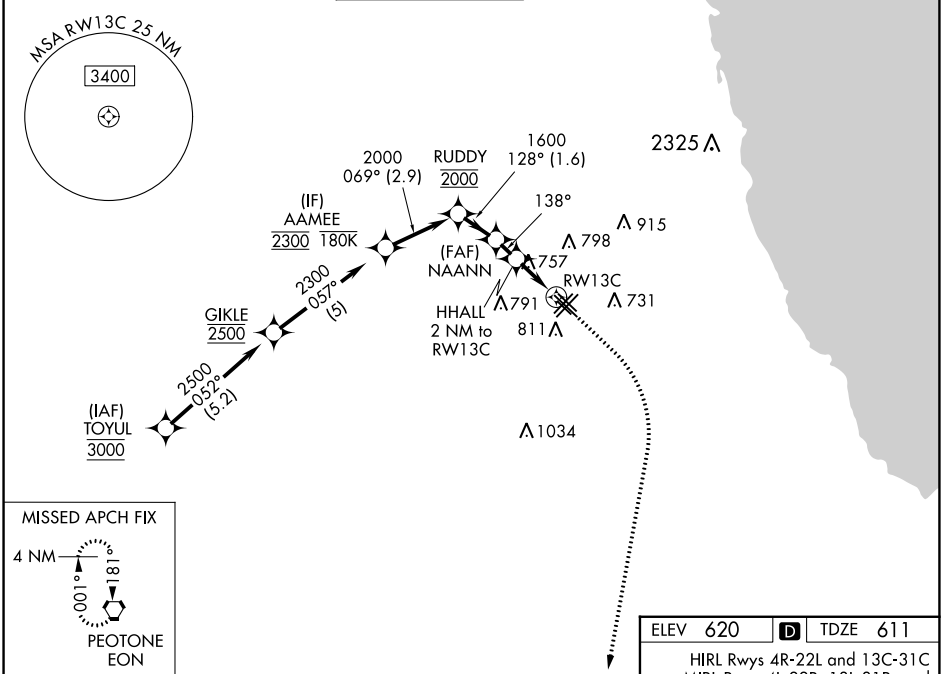
CHICAGO MIDWAY INTL (MDW)

RNP APCH - GPS.

⚠ Rwy 13C helicopter visibility reduction below RVR 4000 NA.
⚠ For uncompensated Baro-VNAV systems, LNAV/VNAV NA below -21°C or above 54°C. Circling Rwy 31R NA at night.

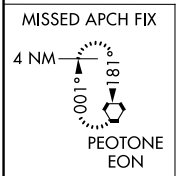
MISSED APPROACH: Climb to 1100 then climbing right turn to 2600 direct EON VORTAC and hold.

D-ATIS 132,75	CHICAGO APP CON 128.2 353,875	MIDWAY TOWER 135.2 269,125	GND CON 118,075	CLNC DEL 124,625	CPDLC
-------------------------	---	--------------------------------------	---------------------------	----------------------------	-------



EC-3, 22 FEB 2024 to 21 MAR 2024

EC-3, 22 FEB 2024 to 21 MAR 2024



	AAMEE	RUDDY	NAANN	HHALL	RW13C
	2300	2000	1600	1280	
		069°	128°	138°	
		2.9 NM	1.6 NM	1 NM	0.9 NM
				1.1 NM	
GP 3.00° TCH 46					
CATEGORY	A	B	C	D	
LPV DA		861/40	250 (300-¾)		
LNAV/VNAV DA		1034-1¼	423 (500-1¼)		
LNAV MDA	1020/55	409 (400-1)	1020/60	409 (400-1¼)	
CIRCLING	1120-1	500 (500-1)	1340-2 720 (800-2)	1340-2¼ 720 (800-2¼)	

ELEV 620 **D** TDZE 611

HIRL Rwy 4R-22L and 13C-31C
 MIRL Rwy 4L-22R, 13L-31R, and 13R-31L
 REIL Rwy 4R, 22L, and 31C
 RLLS Rwy 13C and 31C

WAAS CH 87132 W22A	APP CRS 238°	Rwy Idg 5810 TDZE 611 Apt Elev 620
--	------------------------	---

RNAV (GPS) Z RWY 22L

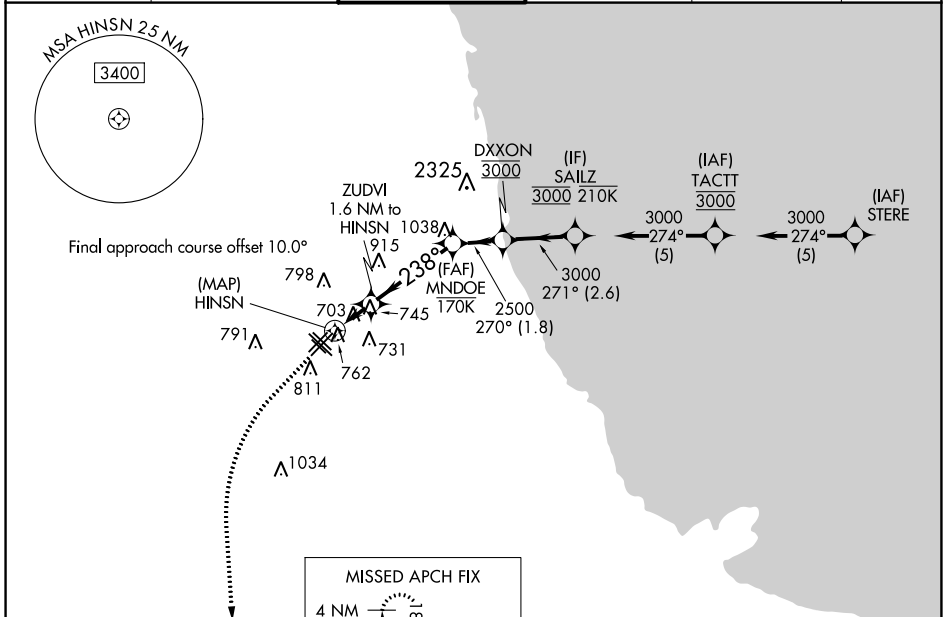
CHICAGO MIDWAY INTL (MDW)

RNP APCH - GPS.
RADAR required.

▼ Circling Rwy 31R NA at night.
▲ Rwy 22L helicopter visibility reduction below RVR 4000 NA.

MISSED APPROACH: Climb to 1300 then climbing left turn to 2600 direct EON VORTAC and hold.

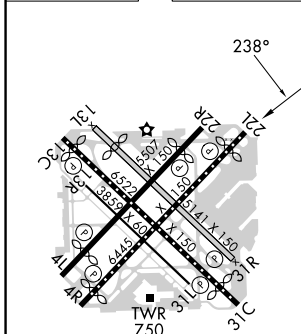
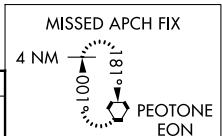
D-ATIS 132.75	CHICAGO APP CON 128.2 353.875	MIDWAY TOWER 135.2 269.125	GND CON 118.075	CLNC DEL 124.625	CPDLC
-------------------------	---	--------------------------------------	---------------------------	----------------------------	-------



EC-3, 22 FEB 2024 to 21 MAR 2024

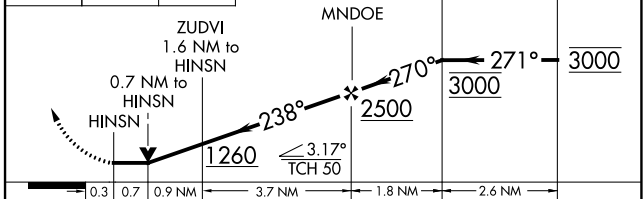
EC-3, 22 FEB 2024 to 21 MAR 2024

ELEV 620	D	TDZE 611
----------	----------	----------



1300	2600	EON
------	------	-----

VGSI and descent angles not coincident (VGSI Angle 3.00/TCH 43).



CATEGORY	A	B	C	D
LP MDA	960/55		349 (400-1)	
LNAV MDA	1020/55	409 (400-1)	1020/60	409 (400-1¼)
C CIRCLING	1120-1	500 (500-1)	1340-2 720 (800-2)	1340-2¼ 720 (800-2¼)

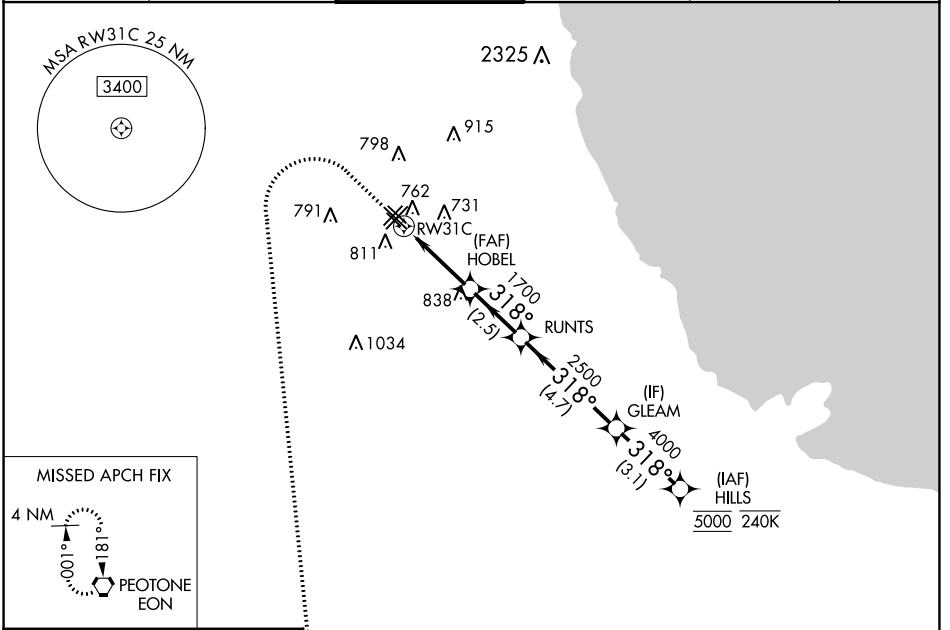
HIRL Rwy 4R-22L and 13C-31C
MIRL Rwy 4L-22R, 13L-31R, and 13R-31L
REIL Rwy 4R, 22L, and 31C
RLS Rwy 13C and 31C

WAAS CH 50512 W31A	APP CRS 318°	Rwy Idg TDZE 613 Apt Elev 620
--	------------------------	---

RNAV (GPS) Z RWY 31C

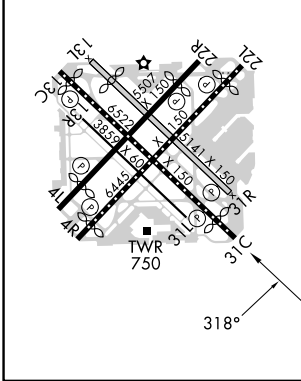
CHICAGO MIDWAY INTL (MDW)

RNP APCH - GPS. RADAR required.		MISSED APPROACH: Climb to 1100 then climbing left turn to 2600 direct EON VORTAC and hold.			
<p>▼ Circling Rwy 31R NA at night. Rwy 31C helicopter visibility reduction below RVR 4000 NA. ▲ For uncompensated Baro-VNAV systems, LNAV/VNAV NA below -19°C or above 54°C.</p>					
D-ATIS 132.75	CHICAGO APP CON 128.2 353.875	MIDWAY TOWER 135.2 269.125	GND CON 118.075	CLNC DEL 124.625	CPDLC



ELEV 620	D	TDZE 613
----------	----------	----------

HIRL Rws 4R-22L and 13C-31C
 MIRL Rws 4L-22R, 13L-31R, and 13R-31L
 REIL Rws 4R, 22L, and 31C
 RLLS Rws 13C and 31C



1100	2600	EON	VGSI and RNAV glidepath not coincident (VGSI Angle 3.00/TCH 63).			
HILLS		GLEAM	2500	318°	5000	
RW31C		HOBEL	1700	2500	4000	GP 3.00° TCH 48
1.1		2.2 NM	2.5 NM	4.7 NM	3.1 NM	
CATEGORY	A	B	C	D		
LPV DA	863/40		250 (300-¾)			
LNAV/VNAV DA	953/50		340 (400-1)			
LNAV MDA	1020/55		407 (400-1)		1020/60	407 (400-1¼)
C CIRCLING	1120-1		500 (500-1)		1340-2	1340-2¼
					720 (800-2)	720 (800-2¼)

EC-3, 22 FEB 2024 to 21 MAR 2024

EC-3, 22 FEB 2024 to 21 MAR 2024

WAAS CH 65614 W04A	APP CRS 047°	Rwy Idg 5927 TDZE 619 Apt Elev 620
--	------------------------	---

RNAV (GPS) Z RWY 4R

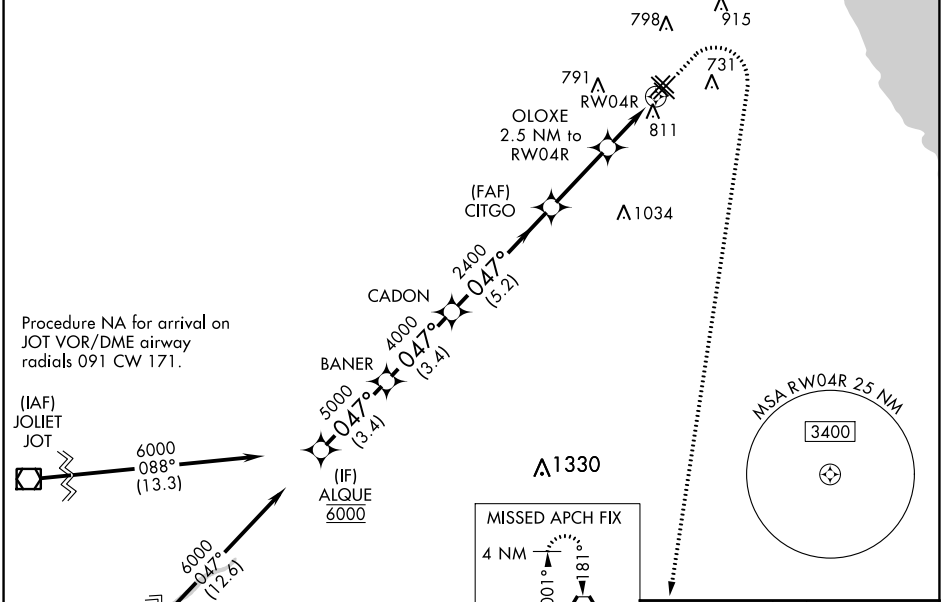
CHICAGO MIDWAY INTL (MDW)

RNP APCH - GPS

▼ Circling Rwy 31R NA at night.
▲ Rwy 4R helicopter visibility reduction below RVR 4000 NA.
 For uncompensated Baro-VNAV systems, LNAV/VNAV NA below -20°C or above 54°C.

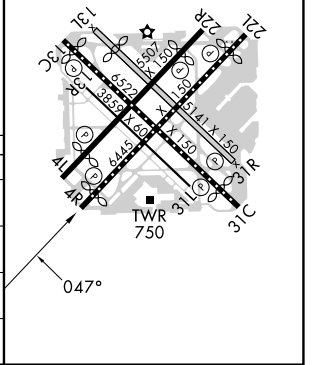
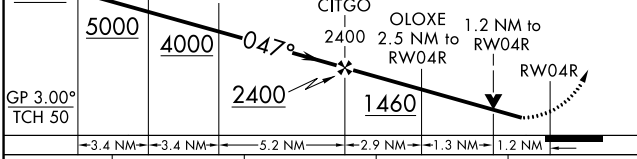
MISSED APPROACH: Climb to 1100 then climbing right turn to 2600 direct EON VORTAC and hold.

D-ATIS 132.75	CHICAGO APP CON 128.2 353.875	MIDWAY TOWER 135.2 269.125	GND CON 118.075	CLNC DEL 124.625	CPDLC
-------------------------	---	--------------------------------------	---------------------------	----------------------------	-------



ELEV 620	D	TDZE 619
----------	----------	----------

HIRL Rwy 4R-22L and 13C-31C
 MIRL Rwy 4L-22R, 13L-31R, and 13R-31L
 REIL Rwy 4R, 22L, and 31C
 RLLS Rwy 13C and 31C



CATEGORY	A	B	C	D
LPV DA		869/40	250 (300-¾)	
LNAV/VNAV DA		1097-1⅜	478 (500-1⅜)	
LNAV MDA	1080/55	461 (500-1)	1080-1⅜	461 (500-1⅜)
C CIRCLING	1120-1	500 (500-1)	1340-2 720 (800-2)	1340-2¼ 720 (800-2¼)

EC-3, 22 FEB 2024 to 21 MAR 2024

EC-3, 22 FEB 2024 to 21 MAR 2024