

LOC I-MEB 110.7	APP CRS 054°	Rwy ldg TDZE Apt Elev	6503 216 216
---------------------------	------------------------	-----------------------------	---

ILS or LOC RWY 5

LAURINBURG/MAXTON (MEB)

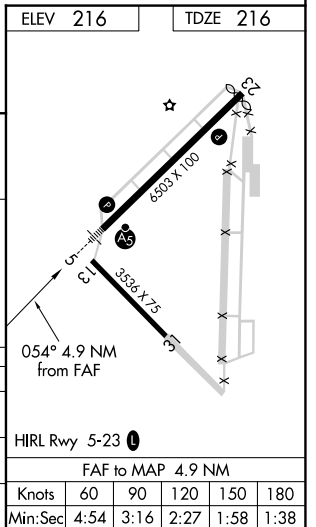
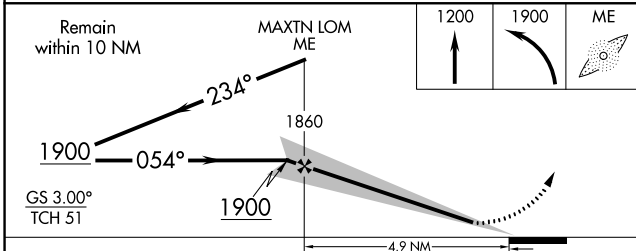
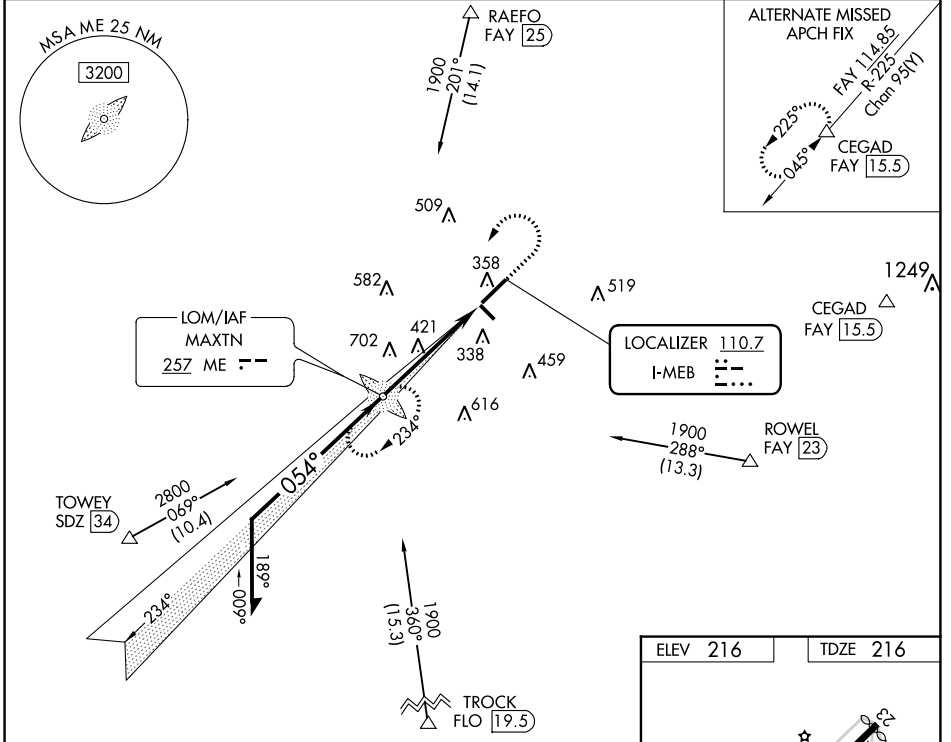
ADF required for procedure entry.
ADF required.

MALSR

MISSED APPROACH: Climb to 1200 then climbing left turn to 1900 direct MAXTN LOM and hold.

⚠ Circling Rwy 13 and 31 NA at night. For inop ALS, increase S-LOC 5 Cat C/D visibility to 1½ SM.

ASOS 134.125	FAYETTEVILLE APP CON 127.8 343.725	GCO 135.075	UNICOM 122.8 (CTAF) 0
------------------------	--	-----------------------	---------------------------------



CATEGORY	A	B	C	D
S-ILS 5	416-½		200 (200-½)	
S-LOC 5	680-½	464 (500-½)	680-1	464 (500-1)
C CIRCLING	740-1	524 (600-1)	780-1½ 564 (600-1½)	1020-2½ 804 (900-2½)

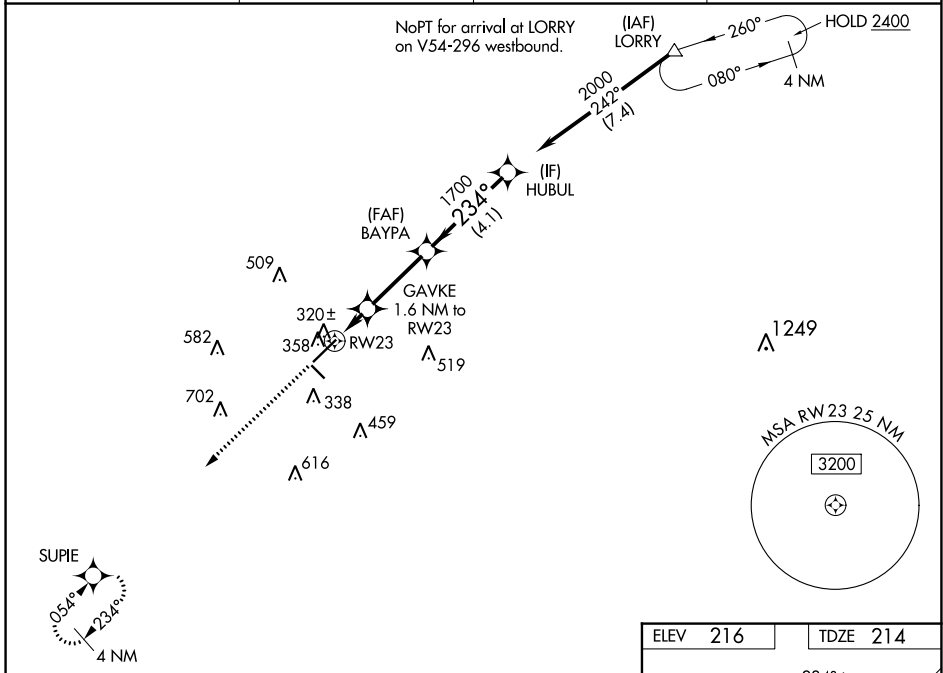
WAAS CH 61023 W23A	APP CRS 234°	Rwy Idg TDZE 214 Apt Elev 216	6316
--	------------------------	---	-------------

RNAV (GPS) RWY 23

LAURINBURG/MAXTON (MEB)

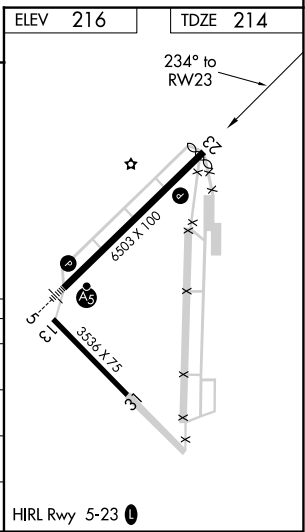
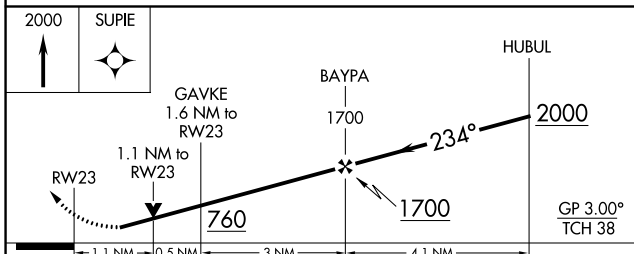
RNP APCH-GPS.		MISSED APPROACH: Climb to 2000 direct SUPIE and hold.
<p>▽ Circling to Rwy 13 and 31 NA at night. Rwy 23 helicopter visibility reduction below 3/4 SM NA. For uncompensated Baro-VNAV systems, LNAV/VNAV NA below -11°C or above 54°C.</p>		

ASOS 134.125	FAYETTEVILLE APP CON 127.8 343.725	GCO 135.075	UNICOM 122.8 (CTAF) 0
------------------------	--	-----------------------	---------------------------------



SE-2, 22 FEB 2024 to 21 MAR 2024

SE-2, 22 FEB 2024 to 21 MAR 2024



CATEGORY	A	B	C	D
LPV DA		483-7/8	269 (300-7/8)	
LNAV/VNAV DA		483-7/8	269 (300-7/8)	
LNAV MDA		580-1	366 (400-1)	
C CIRCLING	740-1	524 (600-1)	780-1 1/2 564 (600-1 1/2)	1020-2 1/2 804 (900-2 1/2)

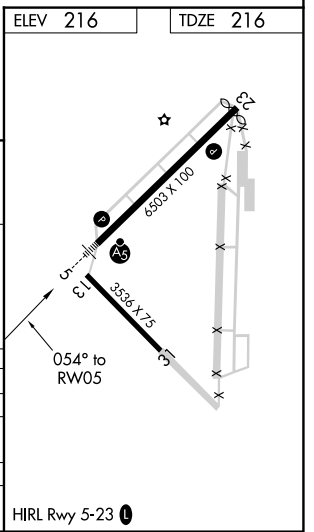
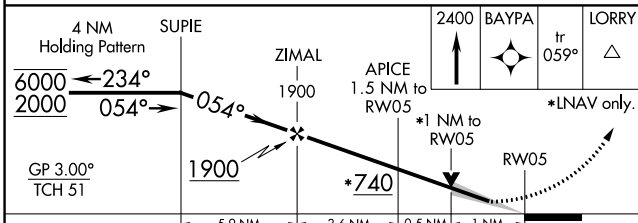
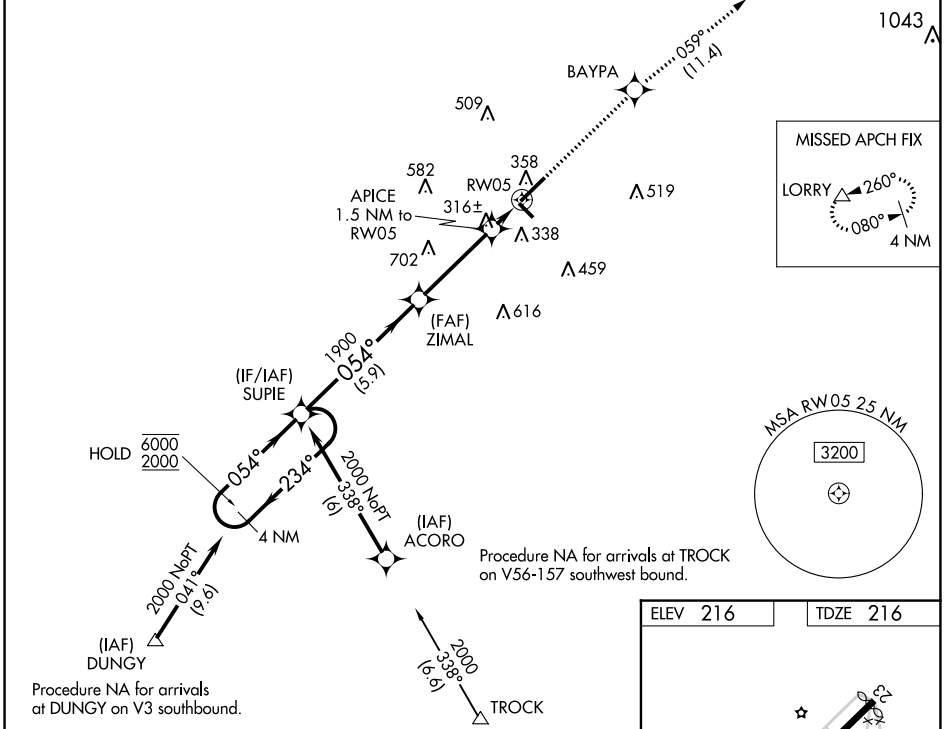
WAAS CH 90423 W05A	APP CRS 054°	Rwy Idg TDZE 216 Apt Elev 216	6503
--	------------------------	---	-------------

RNAV (GPS) RWY 5

LAURINBURG/MAXTON (MEB)

RNP APCH.	MALSR	MISSED APPROACH: Climb to 2400 direct BAYPA and on track 059° to LORRY and hold.
<p>▼ Circling to Rwy 13 and 31 NA at night. For uncompensated Baro-VNAV systems, LNAV/VNAV NA below -15°C or above 42°C. For inop ALS, increase LNAV/VNAV all cats visibility to ¼ SM, and LNAV Cat C/D visibility to 1 SM.</p>		

ASOS 134.125	FAYETTEVILLE APP CON 127.8 343.725	GCO 135.075	UNICOM 122.8 (CTAF) 0
------------------------	--	-----------------------	---------------------------------



CATEGORY	A	B	C	D
LPV DA		416-½	200 (200-½)	
LNAV/VNAV DA		472-½	256 (300-½)	
LNAV MDA	580-½	364 (400-½)	580-⅝	364 (400-⅝)
CIRCLING	740-1	524 (600-1)	780-1½ 564 (600-1½)	1020-2½ 804 (900-2½)

SE-2, 22 FEB 2024 to 21 MAR 2024

SE-2, 22 FEB 2024 to 21 MAR 2024