

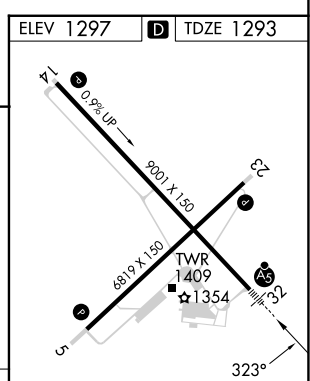
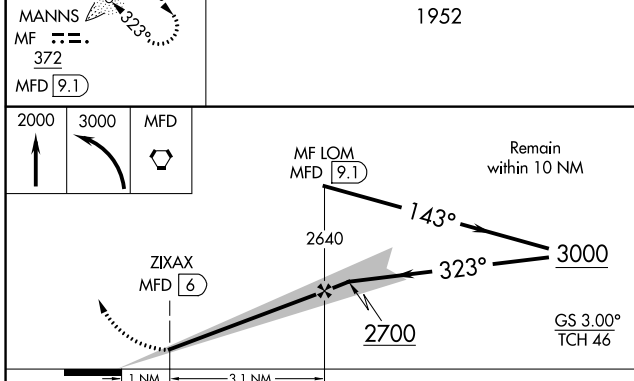
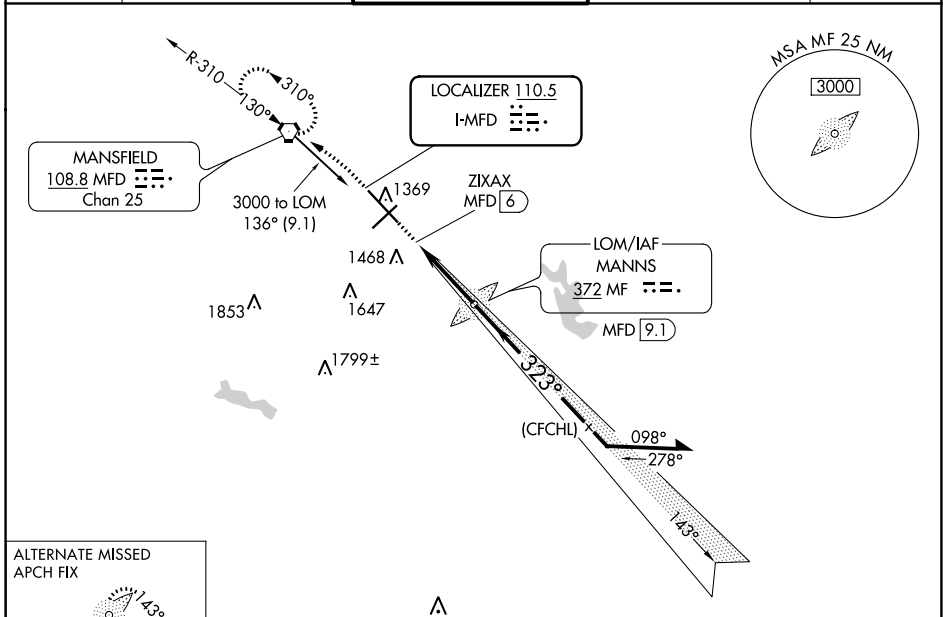


LOC I-MFD <b>110.5</b>	APP CRS <b>323°</b>	Rwy Idg TDZE Apt Elev	<b>9001</b> <b>1293</b> <b>1297</b>
---------------------------	------------------------	-----------------------------	---

**ILS or LOC RWY 32**  
MANSFIELD LAHM RGNL (MFD)

ADF or DME. For inop ALS increase S-ILS 32 all Cats visibility to 1¼ SM.		MALSR 	MISSED APPROACH: Climb to 2000 then climbing left turn to 3000 direct MFD VORTAC and hold.
---	--	-----------	--

ATIS <b>125.3</b>	CLEVELAND APP CON * <b>124.2 360.65</b>	MANSFIELD TOWER * <b>119.8 (CTAF) 291.775</b>	GND CON <b>121.8 291.775</b>	UNICOM <b>122.95</b>
----------------------	--	--	---------------------------------	-------------------------



CATEGORY	A	B	C	D
S-ILS 32	1493/24		200 (200-½)	
S-LOC 32	1840/40	547 (600-¾)	1840/60	547 (600-1¼)
<b>C</b> CIRCLING	1840-1	543 (600-1)	2000-2 703 (800-2)	2000-2¼ 703 (800-2¼)

REIL Rwy 5 and 23	<b>1</b>
HIRL Rwy 5-23 and 14-32	<b>1</b>
FAF to MAP 3.1 NM	
Knots	60 90 120 150 180
Min:Sec	3:06 2:04 1:33 1:14 1:02

EC-2, 22 FEB 2024 to 21 MAR 2024

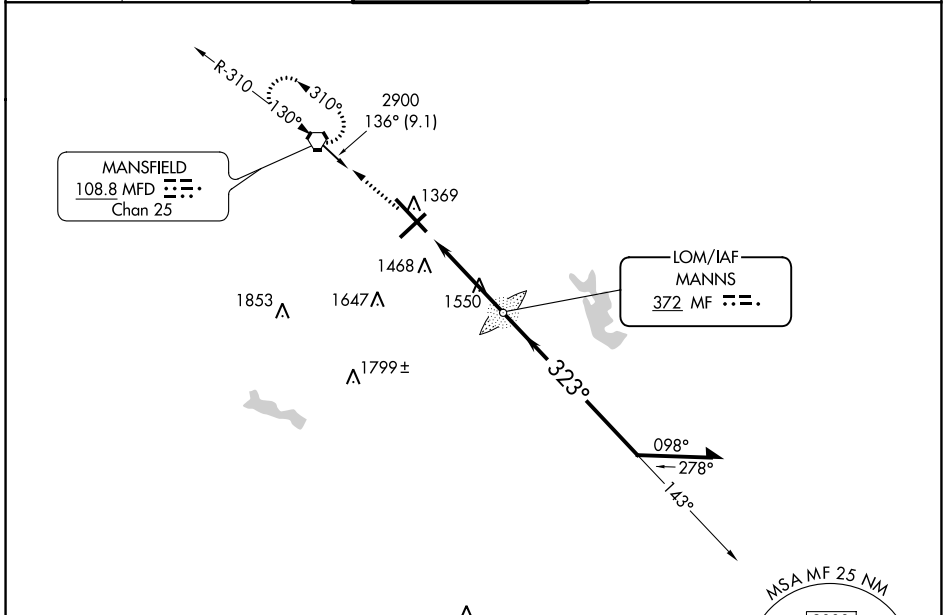
EC-2, 22 FEB 2024 to 21 MAR 2024

LOM MF <b>372</b>	APP CRS <b>323°</b>	Rwy Idg TDZE Apt Elev	<b>9001</b> <b>1293</b> <b>1297</b>
----------------------	------------------------	-----------------------------	---

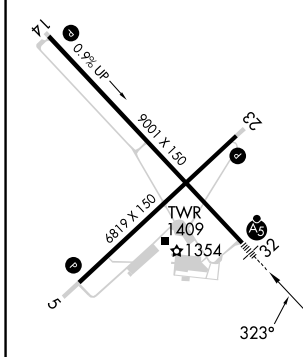
**NDB RWY 32**  
MANSFIELD LAHM RGNL (MFD)

RADAR required for procedure entry.		MALSR 	MISSED APPROACH: Climb to 2900 direct MFD VORTAC and hold.
 For inoperative ALS increase Cats A/B visibility to RVR 5500 and Cats C/D visibility to 1 3/4 SM.			

ATIS <b>125.3</b>	CLEVELAND APP CON ★ <b>124.2 360.65</b>	MANSFIELD TOWER ★ <b>119.8 (CTAF) 291.775</b>	GND CON <b>121.8 291.775</b>	UNICOM <b>122.95</b>
----------------------	--	--	---------------------------------	-------------------------



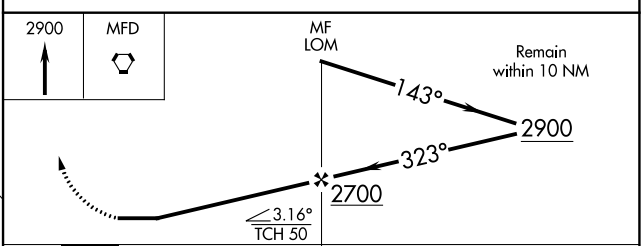
ELEV 1297	<b>D</b>	TDZE 1293
-----------	----------	-----------



HIRL Rwy 5-23 and 14-32  
REIL Rwy 5 and 23

FAF to MAP 4 NM

Knots	60	90	120	150	180
Min:Sec	4:00	2:40	2:00	1:36	1:20



CATEGORY	A	B	C	D
S-32	1900/40	607 (700-3/4)	1900-1 3/8	607 (700-1 1/8)
<input checked="" type="checkbox"/> CIRCLING	1900-1	603 (700-1)	2000-2 703 (800-2)	2000-2 1/4 703 (800-2 1/4)

EC-2, 22 FEB 2024 to 21 MAR 2024

EC-2, 22 FEB 2024 to 21 MAR 2024

WAAS CH <b>53426</b> <b>W14A</b>	APP CRS <b>143°</b>	Rwy Idg TDZE Apt Elev	<b>9001</b> <b>1276</b> <b>1297</b>
--	------------------------	-----------------------------	---

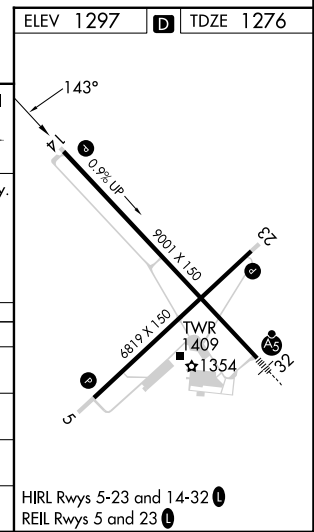
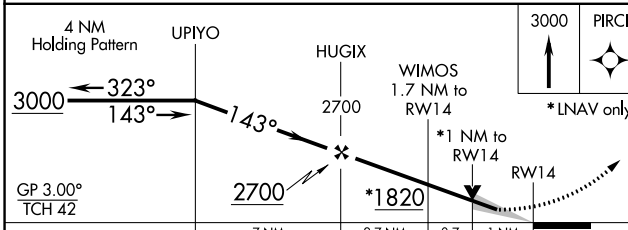
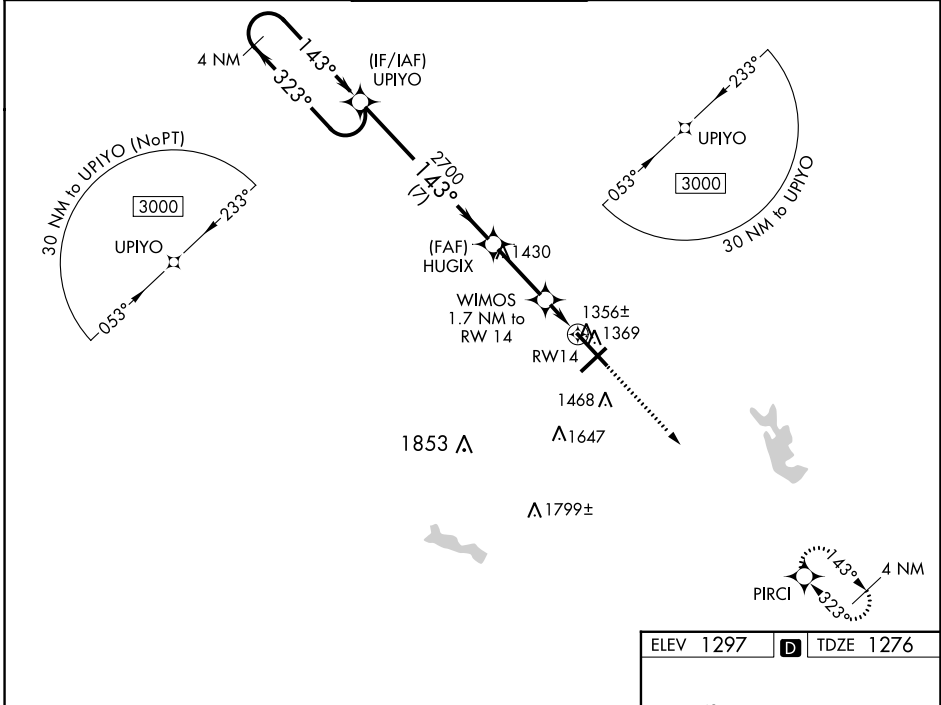
# RNAV (GPS) RWY 14

MANSFIELD LAHM RGNL (MFD)

**▼** For uncompensated Baro-VNAV systems, LNAV/VNAV NA below -18°C (0°F) or above 36°C (96°F).  
**▲** When local altimeter not received, use Marion altimeter setting and increase all DA 107 feet and all MDA 120 feet, and LPV all Cats visibility to 1 SM, LNAV/VNAV all Cats, and LNAV Cat C/D to 1 3/8 SM. Increase Circling Cat C/D visibility 1/2 SM. VDP and Baro-VNAV NA when using Marion altimeter setting.

**MISSED APPROACH:**  
Climb to 3000 direct PIRCI and hold.

ATIS <b>125.3</b>	CLEVELAND APP CON * <b>124.2 360.65</b>	MANSFIELD TOWER * <b>119.8 (CTAF) 291.775</b>	GND CON <b>121.8 291.775</b>	UNICOM <b>122.95</b>
----------------------	--	--	---------------------------------	-------------------------



CATEGORY	A	B	C	D
LPV DA		1476-3/4	200 (200-3/4)	
LNAV/VNAV DA		1557-7/8	281 (300-7/8)	
LNAV MDA		1620-1	344 (400-1)	
<b>C</b> CIRCLING	1760-1	463 (500-1)	2000-2 703 (800-2)	2000-2 1/4 703 (800-2 1/4)

HIRL Rws 5-23 and 14-32  
 REIL Rws 5 and 23

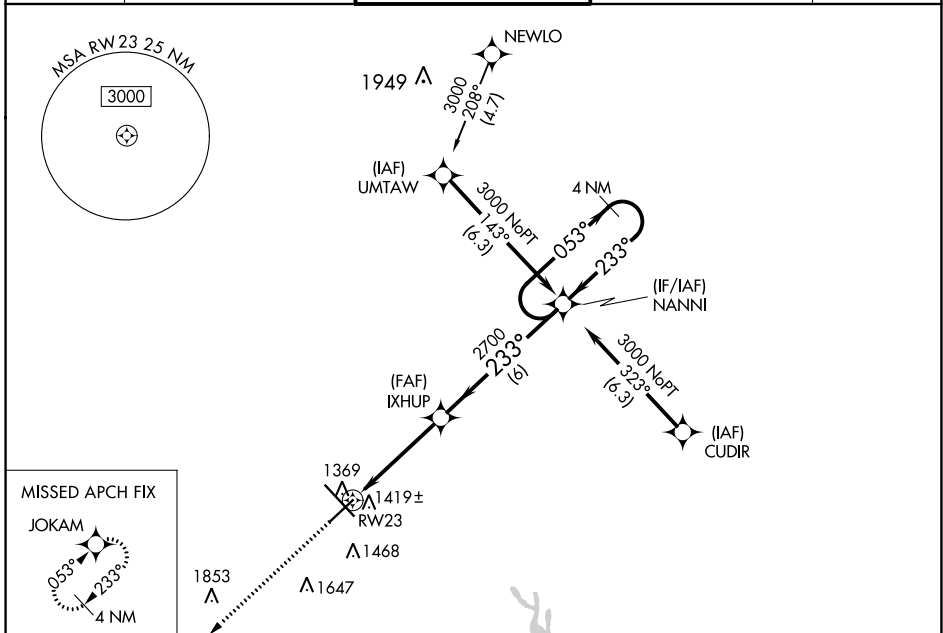
WAAS CH <b>87119</b> <b>W23A</b>	APP CRS <b>233°</b>	Rwy Idg TDZE Apt Elev	<b>6819</b> <b>1295</b> <b>1297</b>
--	------------------------	-----------------------------	---

# RNAV (GPS) RWY 23

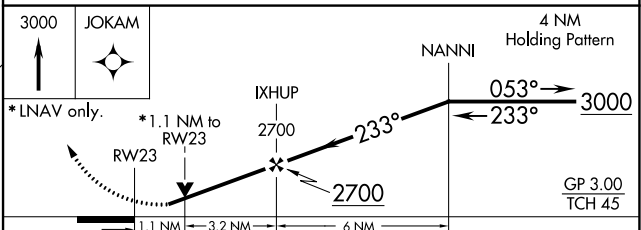
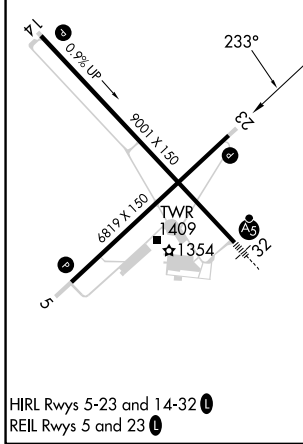
MANSFIELD LAHM RGNL (MFD)

RNP APCH.		MISSED APPROACH: Climb to 3000 direct JOKAM and hold.	
<p>⚠ For uncompensated Baro-VNAV systems, LNAV/VNAV NA below -20°C (-4°F) or above 54°C (130°F). Rwy 23 helicopter visibility reduction below 3/4 SM NA.</p>			

ATIS <b>125.3</b>	CLEVELAND APP CON * <b>124.2 360.65</b>	MANSFIELD TOWER * <b>119.8 (CTAF) 291.775</b>	GND CON <b>121.8 291.775</b>	UNICOM <b>122.95</b>
----------------------	--	--	---------------------------------	-------------------------



ELEV 1297	<b>D</b>	TDZE 1295
-----------	----------	-----------



CATEGORY	A	B	C	D
LPV DA		1545-7/8	250 (300-7/8)	
LNAV/VNAV DA		1619-1 1/8	324 (400-1 1/8)	
LNAV MDA	1680-1	385 (400-1)	1680-1 1/8	385 (400-1 1/8)
<b>C</b> CIRCLING	1760-1	463 (500-1)	2000-2 703 (800-2)	2000-2 1/4 703 (800-2 1/4)

EC-2, 22 FEB 2024 to 21 MAR 2024

EC-2, 22 FEB 2024 to 21 MAR 2024


WAAS CH <b>99611</b> <b>W32A</b>	APP CRS <b>323°</b>	Rwy Idg TDZE Apt Elev	<b>9001</b> <b>1293</b> <b>1297</b>
--	------------------------	-----------------------------	---

# RNAV (GPS) RWY 32

MANSFIELD LAHM RGNL (MFD)

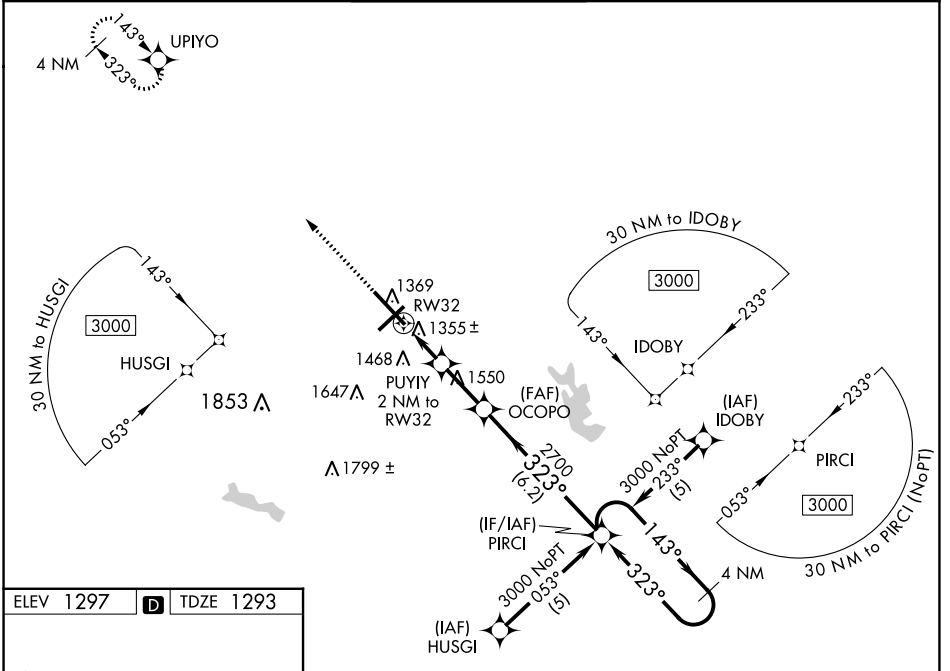
**⚠** Baro-VNAV NA when using Marion altimeter setting. For uncompensated Baro-VNAV systems, LNAV/VNAV NA below -17°C (2°F) or above 46°C (114°F). DME/DME RNP-0.3 NA. When local altimeter not received, use Marion altimeter setting and increase all DA 107 feet and all MDA 120 feet, LNAV/VNAV all Cats visibility ½ SM, LNAV Cat C/D visibility ¾ SM and Circling Cat C/D visibility ½ SM. For inop MALSRS when using Marion altimeter setting increase LPV all Cats visibility to 1. VDP NA with Marion altimeter setting. \*\* RVR 1800 authorized with use of FD or AP or HUD to DA, NA when using Marion altimeter setting.

MALSRS



MISSED APPROACH:  
Climb to 3000 direct  
UPIYO and hold.

ATIS <b>125.3</b>	CLEVELAND APP CON * <b>124.2 360.65</b>	MANSFIELD TOWER * <b>119.8 (CTAF) 0291.775</b>	GND CON <b>121.8 291.775</b>	UNICOM <b>122.95</b>
----------------------	--	---	---------------------------------	-------------------------



ELEV 1297 **D** TDZE 1293

This diagram shows a detailed view of the RWY 32 approach segment. Key features include:
 

- Initial Segment:** 0.9% UP, 3001 x 150, 323° heading.
- Intermediate Segment:** 8819 x 150, 1409 TWR, 1354 ft altitude, 323° heading.
- Final Segment:** 1960 ft altitude, 323° heading.
- Altitudes:** 3000 ft, 2700 ft, 1960 ft.
- Headings:** 143°, 323°.

HIRL Rwy 5-23 and 14-32  
REIL Rwy 5 and 23

3000 UPIYO	OCOPO	PIRCI	4 NM Holding Pattern	
*LNAV only	PUYIY 2 NM to RW32 2700	PIRCI	3000	
	*1 NM to RW32 1960		GP 3.00 TCH 46	
	1 NM 1 NM 2.2 NM 6.2 NM			
CATEGORY	A	B	C	D
LPV DA**		1493/24	200 (200-½)	
LNAV/VNAV DA		1789/60	496 (500-1½)	
LNAV MDA	1660/24	367 (400-½)	1660/35	367 (400-¾)
<b>C</b> CIRCLING	1760-1	463 (500-1)	2000-2 703 (800-2)	2000-2¼ 703 (800-2¼)

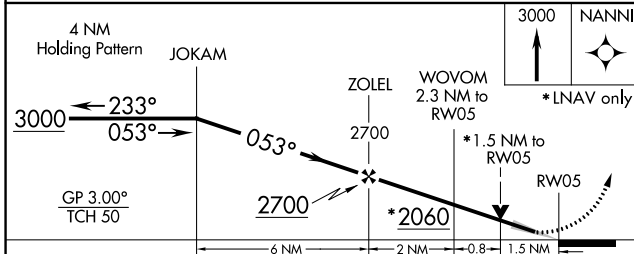
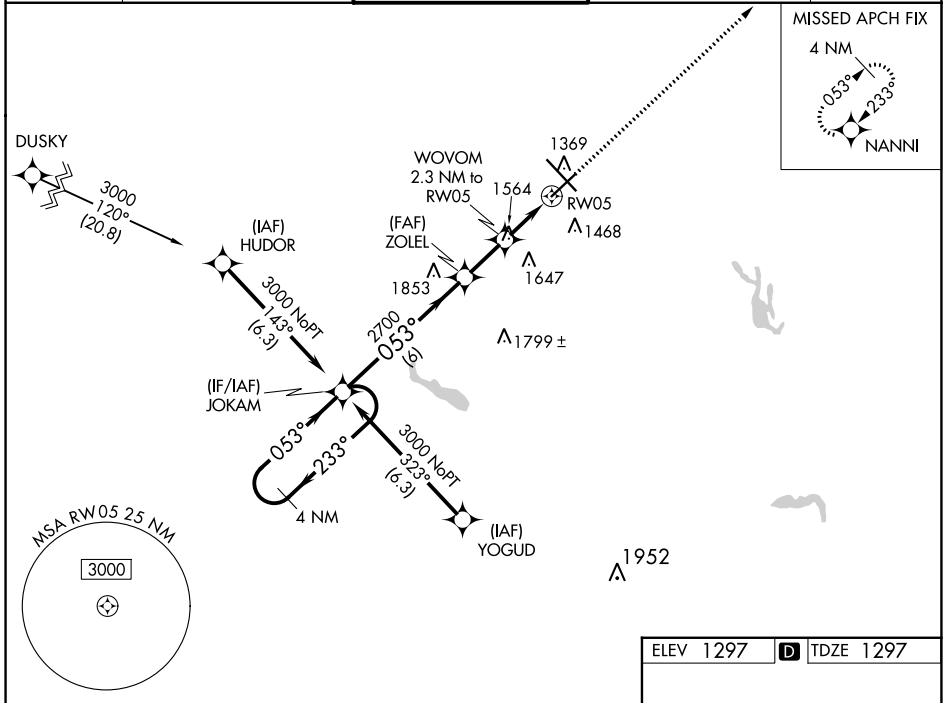
WAAS CH <b>86519</b> W05A	APP CRS <b>053°</b>	Rwy Idg <b>6819</b> TDZE <b>1297</b> Apt Elev <b>1297</b>
---------------------------------	------------------------	---

# RNAV (GPS) RWY 5

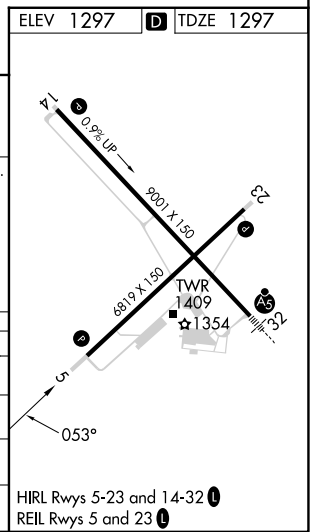
MANSFIELD LAHM RGNL (MFD)

RNP APCH	For uncompensated Baro-VNAV systems, LNAV/VNAV NA below -20°C (-4°F) or above 54°C (130°F).	MISSED APPROACH: Climb to 3000 direct NANNI and hold.
----------	---	---

ATIS <b>125.3</b>	CLEVELAND APP CON * <b>124.2 360.65</b>	MANSFIELD TOWER * <b>119.8 (CTAF) 291.775</b>	GND CON <b>121.8 291.775</b>	UNICOM <b>122.95</b>
----------------------	--	--	---------------------------------	-------------------------



CATEGORY	A	B	C	D
LPV DA		1547-7/8	250 (300-7/8)	
LNAV/VNAV DA		1590-1	293 (300-1)	
LNAV MDA	1820-1 523 (600-1)		1820-1 1/2 523 (600-1 1/2)	
<b>C</b> CIRCLING	1820-1 523 (600-1)		2000-2 703 (800-2)	2000-2 1/4 703 (800-2 1/4)



EC-2, 22 FEB 2024 to 21 MAR 2024

EC-2, 22 FEB 2024 to 21 MAR 2024

VORTAC MFD <b>108.8</b> Chan 25	APP CRS <b>130°</b>	Rwy Idg TDZE <b>1276</b> Apt Elev <b>1297</b>	<b>9001</b>
---------------------------------------	------------------------	---	-------------

# VOR RWY 14

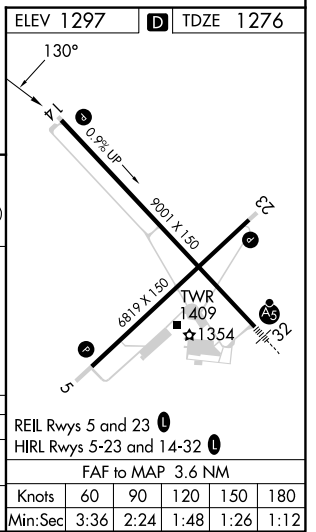
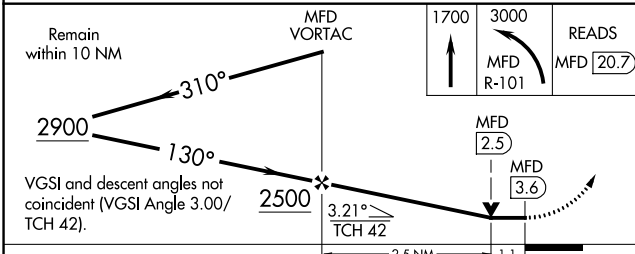
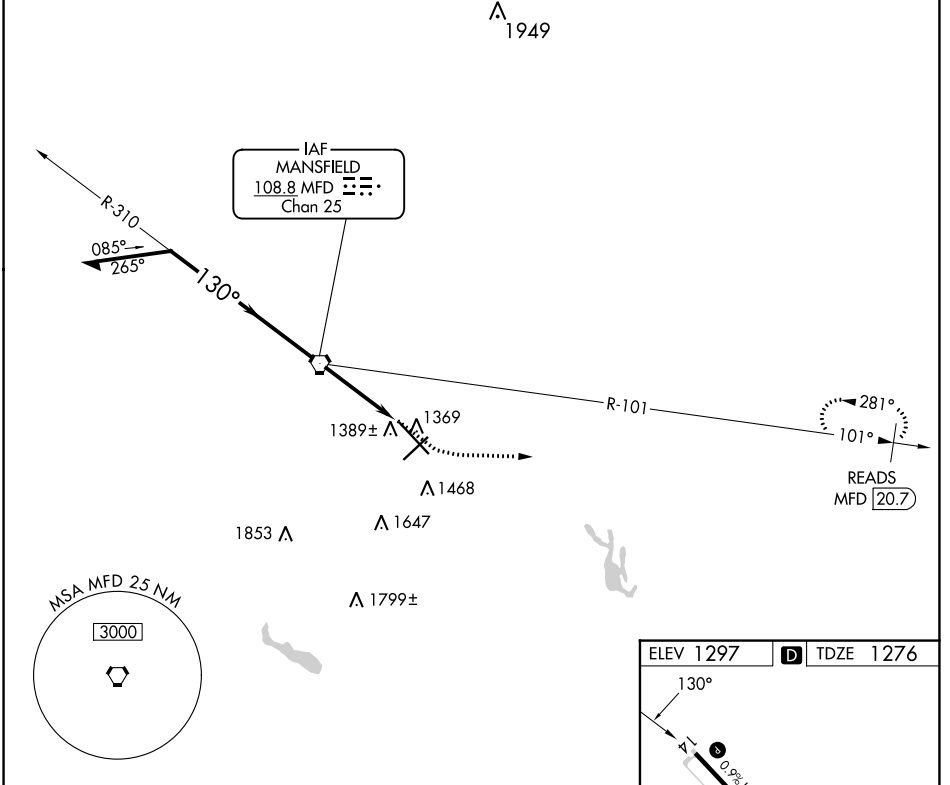
MANSFIELD LAHM RGNL (MFD)

DME required. RADAR required for procedure entry.

**▽**  
**▲**

MISSED APPROACH: Climb to 1700 then climbing left turn to 3000 on MFD VORTAC R-101 to READS/MFD 20.7 DME and hold.

ATIS <b>125.3</b>	CLEVELAND APP CON * <b>124.2 360.65</b>	MANSFIELD TOWER * <b>119.8 (CTAF) 291.775</b>	GND CON <b>121.8 291.775</b>	UNICOM <b>122.95</b>
----------------------	--	--	---------------------------------	-------------------------



CATEGORY	A	B	C	D
S-14	1640-1 364 (400-1)			
<b>C</b> CIRCLING	1760-1 463 (500-1)	2000-2 703 (800-2)		2000-2 1/4 703 (800-2 1/4)

EC-2, 22 FEB 2024 to 21 MAR 2024

EC-2, 22 FEB 2024 to 21 MAR 2024



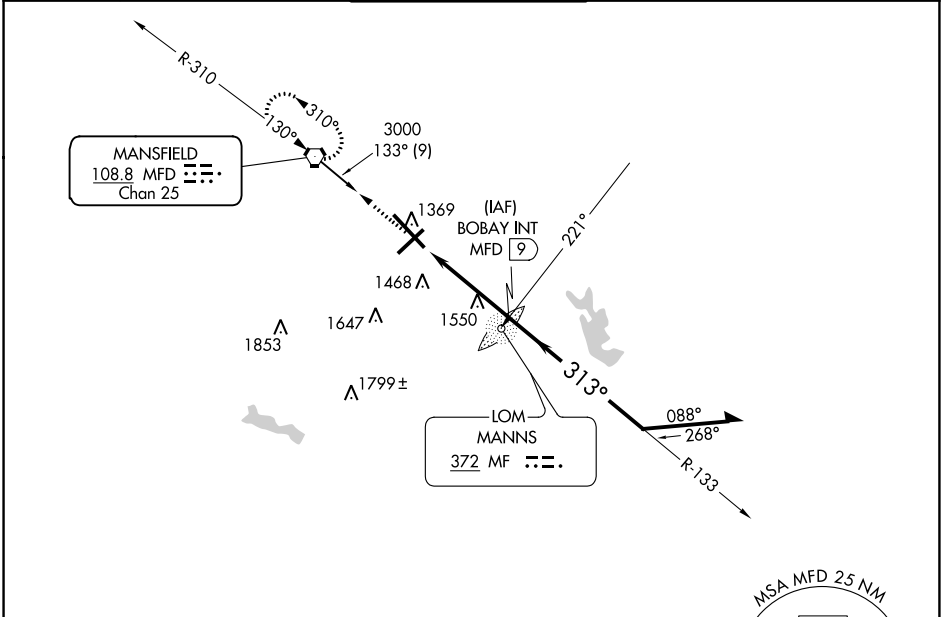
VORTAC MFD <b>108.8</b> Chan <b>25</b>	APP CRS <b>313°</b>	Rwy Idg TDZE <b>1293</b> Apt Elev <b>1297</b>
--	------------------------	---

# VOR RWY 32

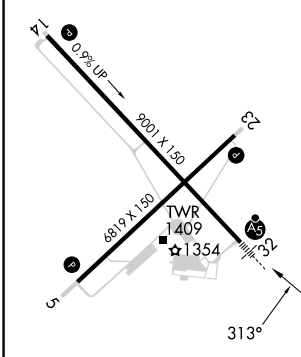
MANSFIELD LAHM RGNL (MFD)

ADF or DME required. RADAR required for procedure entry.		MALSR	MISSED APPROACH: Climb to 3000 direct MFD VORTAC and hold.	
--	--	-------	--	--

ATIS <b>125.3</b>	CLEVELAND APP CON ★ <b>124.2 360.65</b>	MANSFIELD TOWER ★ <b>119.8 (CTAF) 291.775</b>	GND CON <b>121.8 291.775</b>	UNICOM <b>122.95</b>
----------------------	--	--	---------------------------------	-------------------------

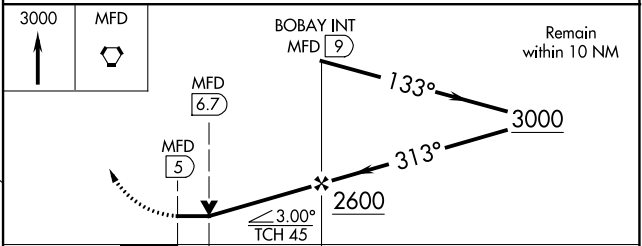


ELEV 1297	D	TDZE 1293
-----------	---	-----------



REIL Rwy 5 and 23  
HIRL Rwy 5-23 and 14-32  
FAF to MAP 4 NM

Knots	60	90	120	150	180
Min:Sec	4:00	2:40	2:00	1:36	1:20



CATEGORY	A	B	C	D
S-32	1860/24	567 (600-1/2)	1860/50 567 (600-1)	1860/60 567 (600-1 1/4)
<input checked="" type="checkbox"/> CIRCLING	1860-1	563 (600-1)	2000-2 703 (800-2)	2000-2 1/4 703 (800-2 1/4)

EC-2, 22 FEB 2024 to 21 MAR 2024

EC-2, 22 FEB 2024 to 21 MAR 2024