

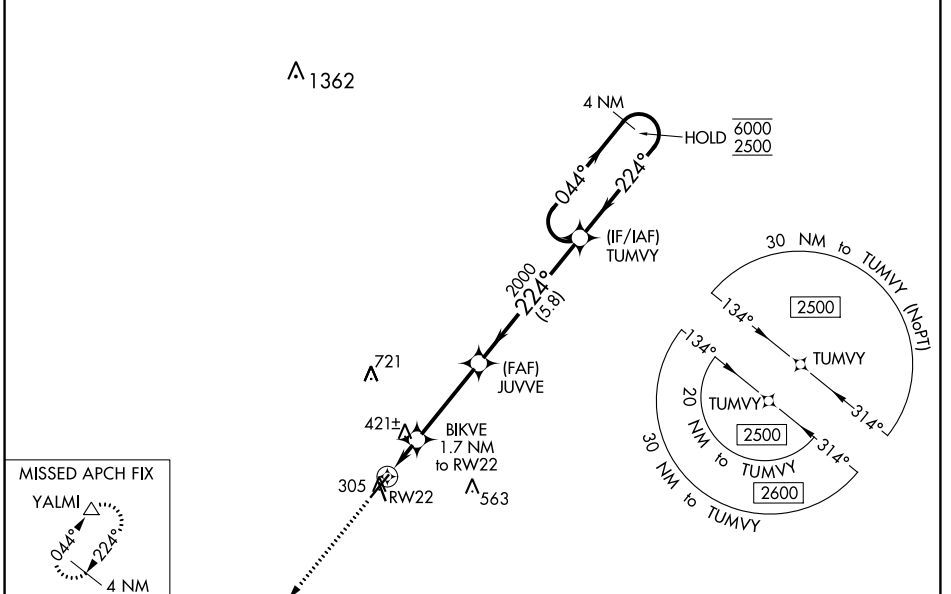
WAAS CH <b>93803</b> <b>W22A</b>	APP CRS <b>224°</b>	Rwy Idg TDZE Apt Elev	<b>5628</b> <b>297</b> <b>298</b>
--	------------------------	-----------------------------	---

# RNAV (GPS) RWY 22

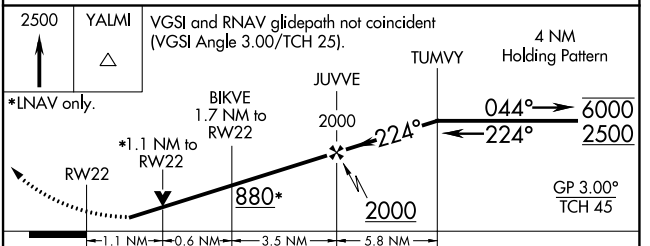
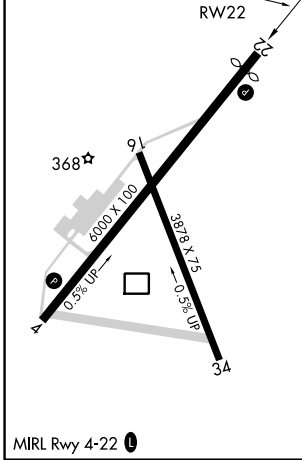
MOULTRIE MUNI (MGR)

RNP APCH.	MISSED APPROACH: Climb to 2500 direct YALMI and hold.
-----------	---

AWOS-3PT <b>118.925</b>	VALDOSTA APP CON ★ <b>126.6 285.6</b>	UNICOM <b>122.8</b> (CTAF) <b>0</b>
----------------------------	--	--



ELEV 298	<b>D</b>	TDZE 297
----------	----------	----------



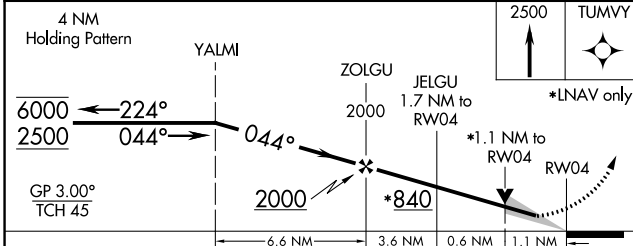
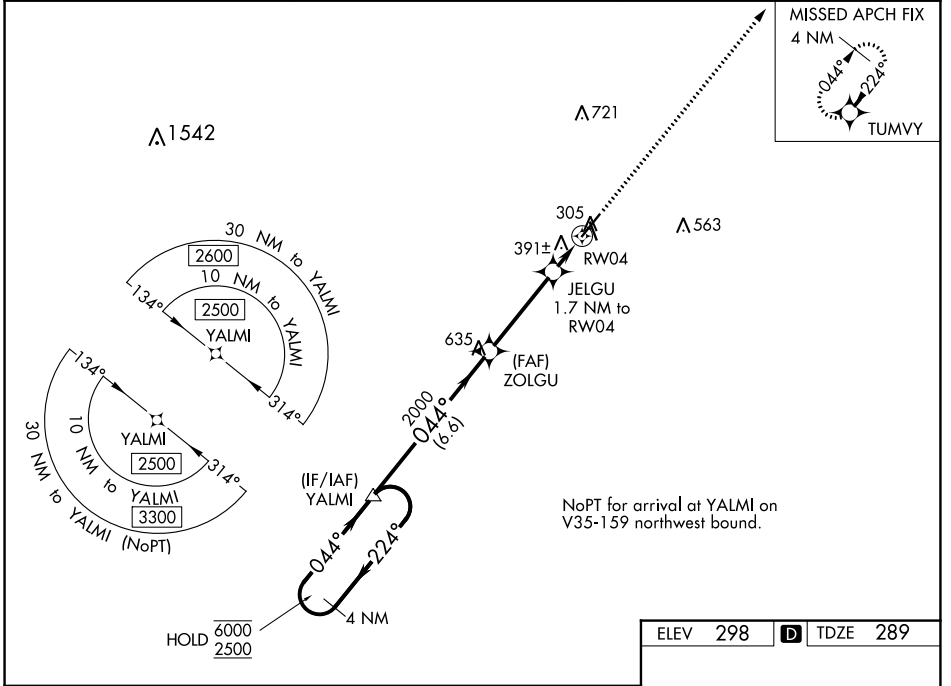
CATEGORY	A	B	C	D
LPV DA		601-1	304 (400-1)	
LNAV/VNAV DA		569-1	272 (300-1)	
LNAV MDA	680-1	383 (400-1)	680-1½	383 (400-1½)
<b>C</b> CIRCLING	720-1 422 (500-1)	760-1 462 (500-1)	860-1½ 562 (600-1½)	1080-2½ 782 (800-2½)

WAAS CH <b>82603</b> <b>W04A</b>	APP CRS <b>044°</b>	Rwy Idg TDZE Apt Elev	<b>6000</b> <b>289</b> <b>298</b>
--	------------------------	-----------------------------	---

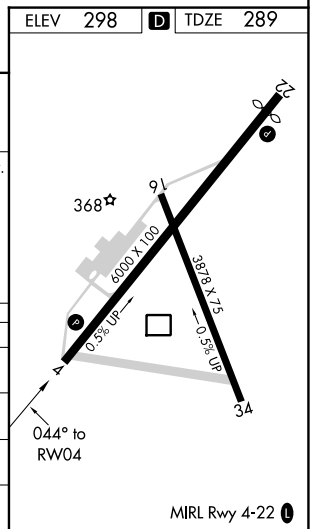
# RNAV (GPS) RWY 4

MOULTRIE MUNI (MGR)

RNP APCH.		MISSED APPROACH: Climb to 2500 direct TUMVY and hold.
AWOS-3PT <b>118.925</b>	VALDOSTA APP CON ★ <b>126.6 285.6</b>	UNICOM <b>122.8 (CTAF) 0</b>



CATEGORY	A	B	C	D
LPV DA		539-1	250 (300-1)	
LNNAV/VNAV DA		552-1	263 (300-1)	
LNNAV MDA		660-1	371 (400-1)	
<b>C</b> CIRCLING	720-1 422 (500-1)	760-1 462 (500-1)	860-1½ 562 (600-1½)	1080-2½ 782 (800-2½)



SE-4, 22 FEB 2024 to 21 MAR 2024

SE-4, 22 FEB 2024 to 21 MAR 2024