

APP CRS 178°	Rwy Idg 4805
	TDZE 779
	Apt Elev 779

RNAV (GPS) RWY 18

MARSHALL MEML MUNI (MHL)

RNP APCH.

▼ Rwy 18 helicopter visibility reduction below 3/4 SM NA. VDP NA when using Sedalia altimeter setting. Circling Rwy 9 and 27 NA. When local altimeter setting not received, use Sedalia altimeter setting and increase all MDAs 80 feet.

MISSED APPROACH: Climb to 3000 direct GOCOL and hold.

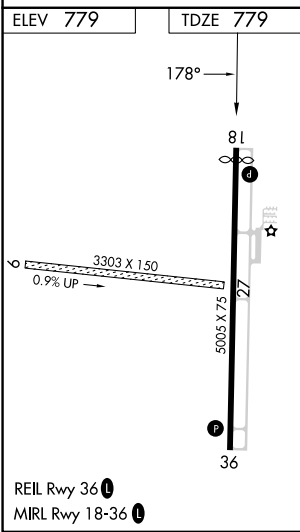
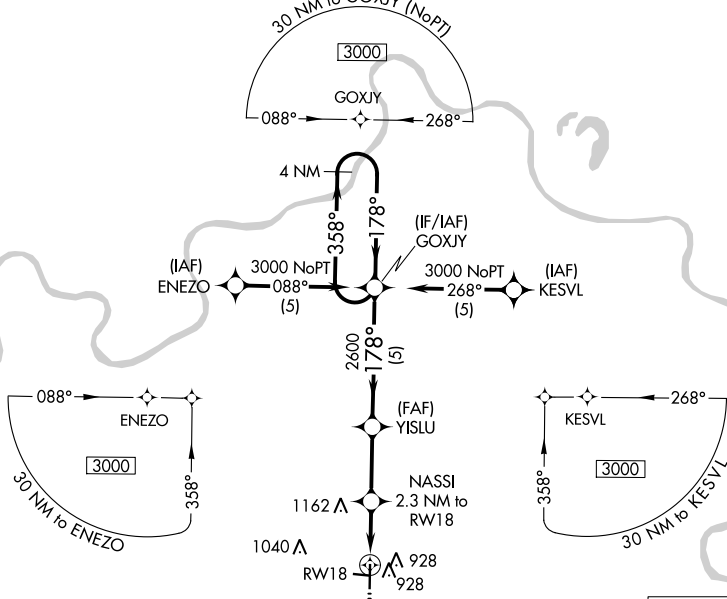
AWOS-3PT 118.675

WHITEMAN APP CON * 127.45

UNICOM 122.8 (CTAF) 0

NC-3, 22 FEB 2024 to 21 MAR 2024

NC-3, 22 FEB 2024 to 21 MAR 2024



MISSED APCH FIX			
GOCOL			
Visual Segment - Obstacles.			
3000	GOCOL	NASSI 2.3 NM to RW18	GOXJY 4 NM Holding Pattern
	1.7 NM to RW18	YISLU	358° → 3000
	1620	2600	← 178°
	1.7 NM	0.6	2.7 NM
			5 NM
CATEGORY	A	B	C
LNAV MDA	1360-1	581 (600-1)	NA
CIRCLING	1360-1	581 (600-1)	NA

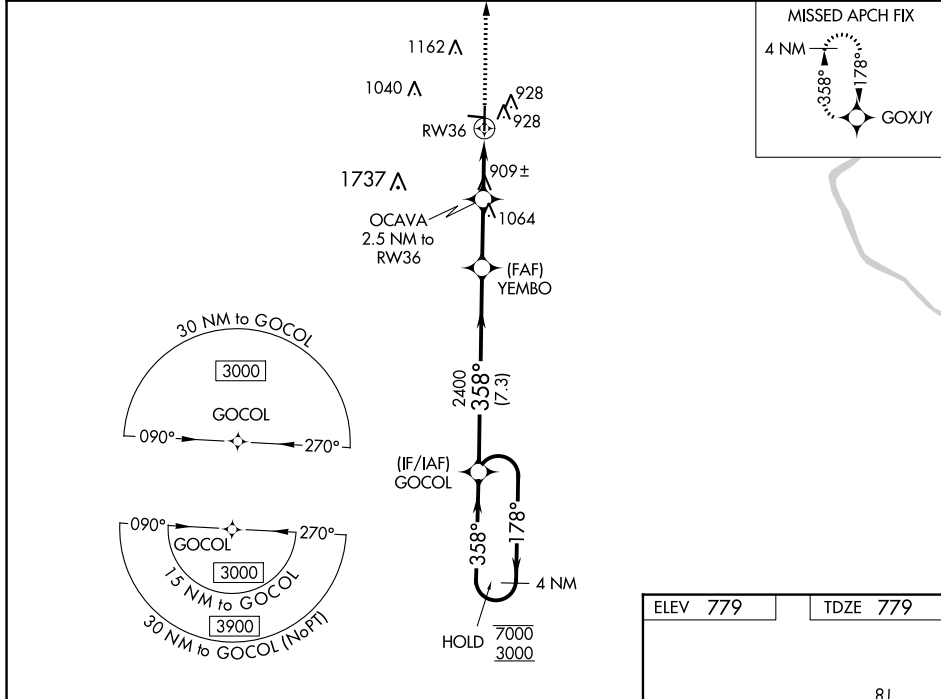
RNAV (GPS) RWY 36

MARSHALL MEML MUNI (MHL)

WAAS CH 93907 W36A	APP CRS 358°	Rwy Idg 5005 TDZE 779 Apt Elev 779
--	------------------------	---

RNP APCH.	MISSED APPROACH: Climb to 3000 direct GOXJY and hold.
<p>▼ Circling NA to Rwys 9 and 27. For uncompensated Baro-VNAV systems, LNAV/VNAV NA below -16°C or above 54°C.</p>	

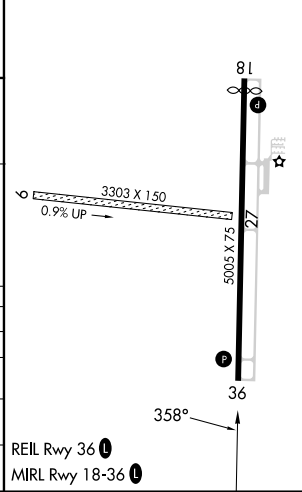
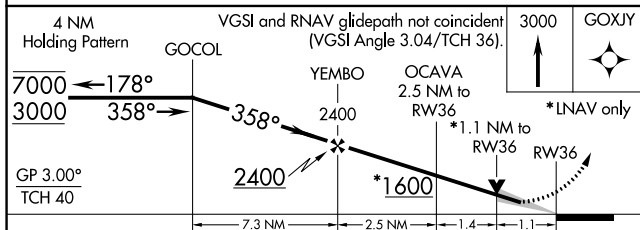
AWOS-3PT 118,675	WHITEMAN APP CON ★ 127.45	UNICOM 122.8 (CTAF) 0
----------------------------	-------------------------------------	--



NC-3, 22 FEB 2024 to 21 MAR 2024

NC-3, 22 FEB 2024 to 21 MAR 2024

ELEV 779	TDZE 779
----------	----------



CATEGORY	A	B	C	D
LPV DA	1029-1 250 (300-1)		NA	
LNAV/VNAV DA	1091-1 312 (400-1)		NA	
LNAV MDA	1160-1 381 (400-1)	1160-1½ 381 (400-1½)		NA
CIRCLING	1260-1 481 (500-1)	1480-2 701 (800-2)		NA