

WAAS CH <b>50236</b> <b>W13A</b>	APP CRS <b>126°</b>	Rwy Idg TDZE Apt Elev	<b>5007</b> <b>975</b> <b>975</b>
--	------------------------	-----------------------------	---

# RNAV (GPS) RWY 13

MARSHALLTOWN MUNI (MIW)

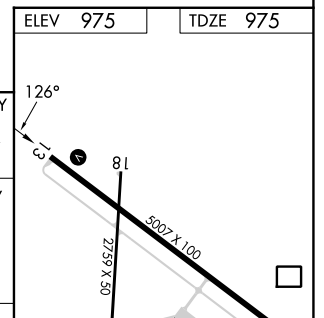
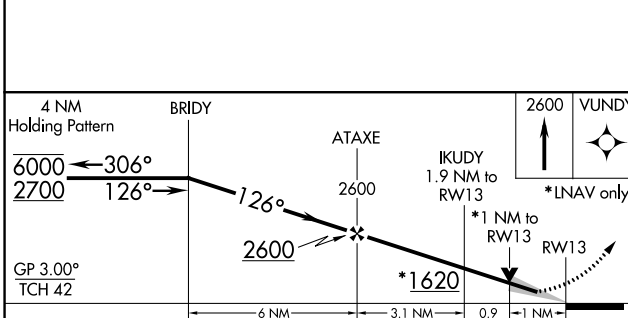
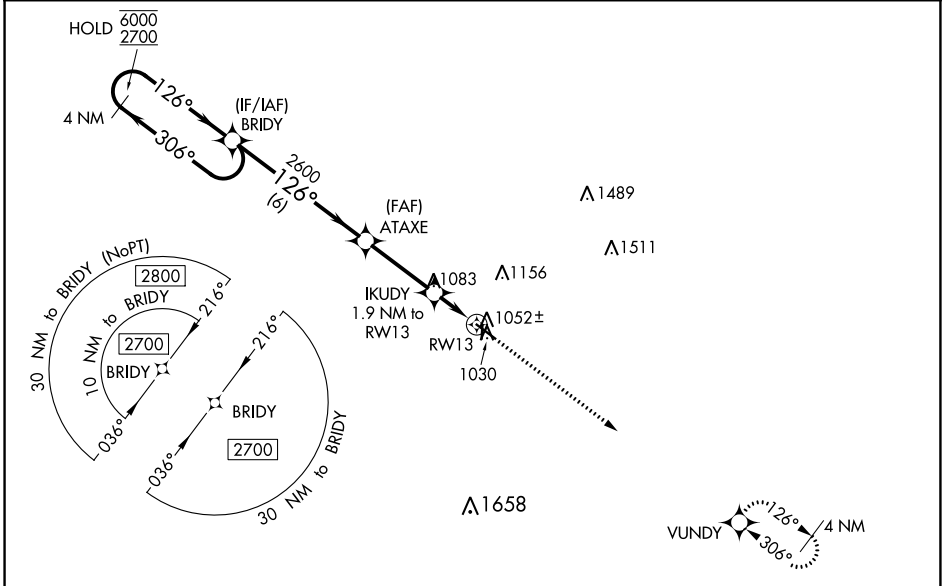
RNP APCH.

**⚠** Circling Rwy 18, 36 NA at night. Baro-VNAV and VDP NA when using Grinnell altimeter setting. For uncompensated Baro-VNAV systems, LNAV/VNAV NA below -21°C or above 54°C.

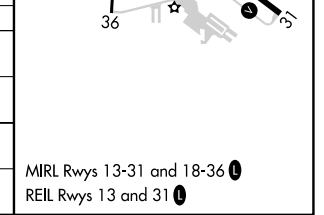
**⚠** When local altimeter setting not received, use Grinnell altimeter setting and increase all DA 64 feet and all MDA 80 feet; increase LNAV Cats C/D and Circling Cat D visibility ¼ SM.

MISSED APPROACH: Climb to 2600 direct VUNDY and hold.

ASOS <b>128.325</b>	WATERLOO APP CON * <b>120.9</b>	CLNC DEL <b>120.9</b>	UNICOM <b>122.8 (CTAF) 0</b>
------------------------	------------------------------------	--------------------------	---------------------------------



CATEGORY	A	B	C	D
LPV DA		1225-1	250 (300-1)	
LNAV/VNAV DA		1225-1	250 (300-1)	
LNAV MDA		1320-1	345 (400-1)	
<b>C</b> CIRCLING	1400-1 425 (500-1)	1440-1 465 (500-1)	1460-1½ 485 (500-1½)	1840-2¾ 865 (900-2¾)



NC-3, 22 FEB 2024 to 21 MAR 2024

NC-3, 22 FEB 2024 to 21 MAR 2024

MIRL Rwy 13-31 and 18-36 0  
REIL Rwy 13 and 31 0

WAAS CH <b>48936</b> <b>W31A</b>	APP CRS <b>306°</b>	Rwy Idg TDZE Apt Elev	<b>5007</b> <b>973</b> <b>975</b>
--	------------------------	-----------------------------	---

# RNAV (GPS) RWY 31

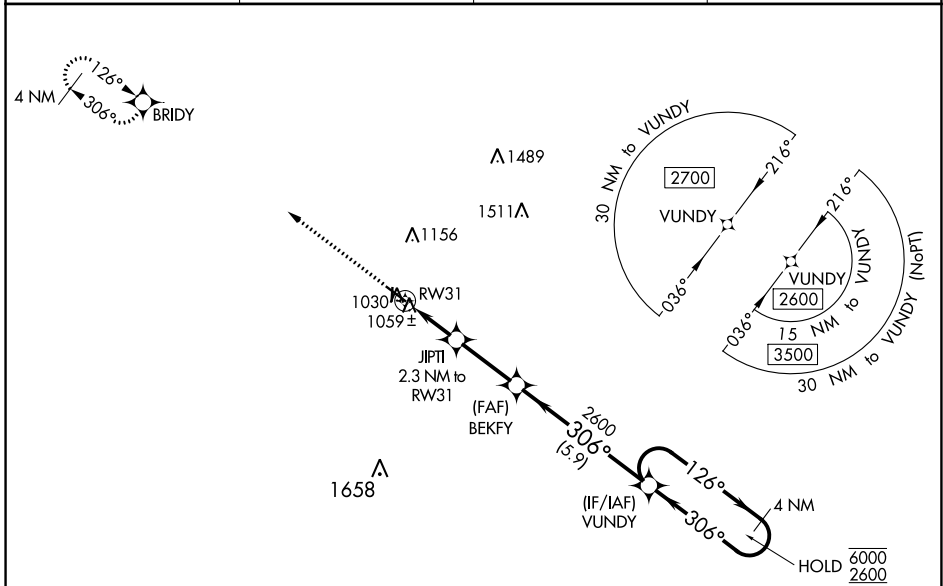
MARSHALLTOWN MUNI (MIW)

**RNP APCH.**

**▼** Baro-VNAV and VDP NA when using Grinnell altimeter setting. Rwy 31 Helicopter visibility reduction below 3/4 SM NA. For uncompensated Baro-VNAV systems, LNAV/VNAV NA below -22°C or above 54°C. When local altimeter setting not received, use Grinnell altimeter setting and increase all DA 64 feet and all MDA 80 feet; increase LPV and LNAV/VNAV all Cats visibility 1/8 SM and LNAV Cats C/D and Circling Cat D visibility 1/4 SM. Circling Rwy 18, 36 NA at night.

**▲** MISSED APPROACH: Climb to 2700 direct BRIDY and hold.

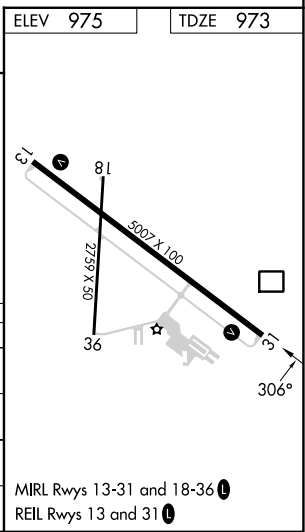
ASOS <b>128.325</b>	WATERLOO APP CON * <b>120.9</b>	CLNC DEL <b>120.9</b>	UNICOM <b>122.8 (CTAF) 0</b>
------------------------	------------------------------------	--------------------------	---------------------------------



NC-3, 22 FEB 2024 to 21 MAR 2024

NC-3, 22 FEB 2024 to 21 MAR 2024

ELEV 975	TDZE 973			
2700 BRIDY				
*LNAV only				
*1 NM to RW31				
JIPTI 2.3 NM to RW31				
BEKFY 2600	VUNDY 4 NM Holding Pattern			
1740*	6000 / 2600			
GP 3.00° TCH 37				
1 NM, 1.3 NM, 2.7 NM, 5.9 NM				
CATEGORY	A	B	C	D
LPV DA		1223-1	250 (300-1)	
LNAV/VNAV DA		1223-1	250 (300-1)	
LNAV MDA		1320-1	347 (400-1)	
CIRCLING	1400-1 425 (500-1)	1440-1 465 (500-1)	1460-1½ 485 (500-1½)	1840-2¾ 865 (900-2¾)



MIRL Rwy 13-31 and 18-36 0  
REIL Rwy 13 and 31 0